

**City of San Diego  
2006 MSCP Roadkill  
Monitoring Report**

City of San Diego  
Park and Recreation Department  
Open Space Division

June 2009



Cover Photo Credits (from top to bottom):  
*Ambrosia pumila*: © Jim Rocks, 2003  
*Brodiaea orcuttii*: © Scott McMillan, 2001  
*Dudleya brevifolia*: © City of San Diego, 2005  
*Acanthomintha ilicifolia*: © Scott McMillan, 2001  
*Monardella viminea*: © City of San Diego, 2003  
*Dudleya variegata*: © City of San Diego, 2004  
*Cordylanthus orcuttii*: © City of San Diego, 2005

## **MSCP Roadkill Monitoring**

Pursuant to section four of the *Biological Monitoring Plan for the Multiple Species Conservation Program* (1996), the City collects roadkill data in plan-specified habitat linkage roadway areas that are within its jurisdiction.

All information was collected by the City of San Diego's Environmental Services Department (ESD) and is included in the attached list. The species from ESD's list were mapped by the City's MSCP division. All maps and collection information are attached and serve as the City's MSCP roadkill monitoring report.

## **Acknowledgments**

The following staff assisted in the preparation of this report:

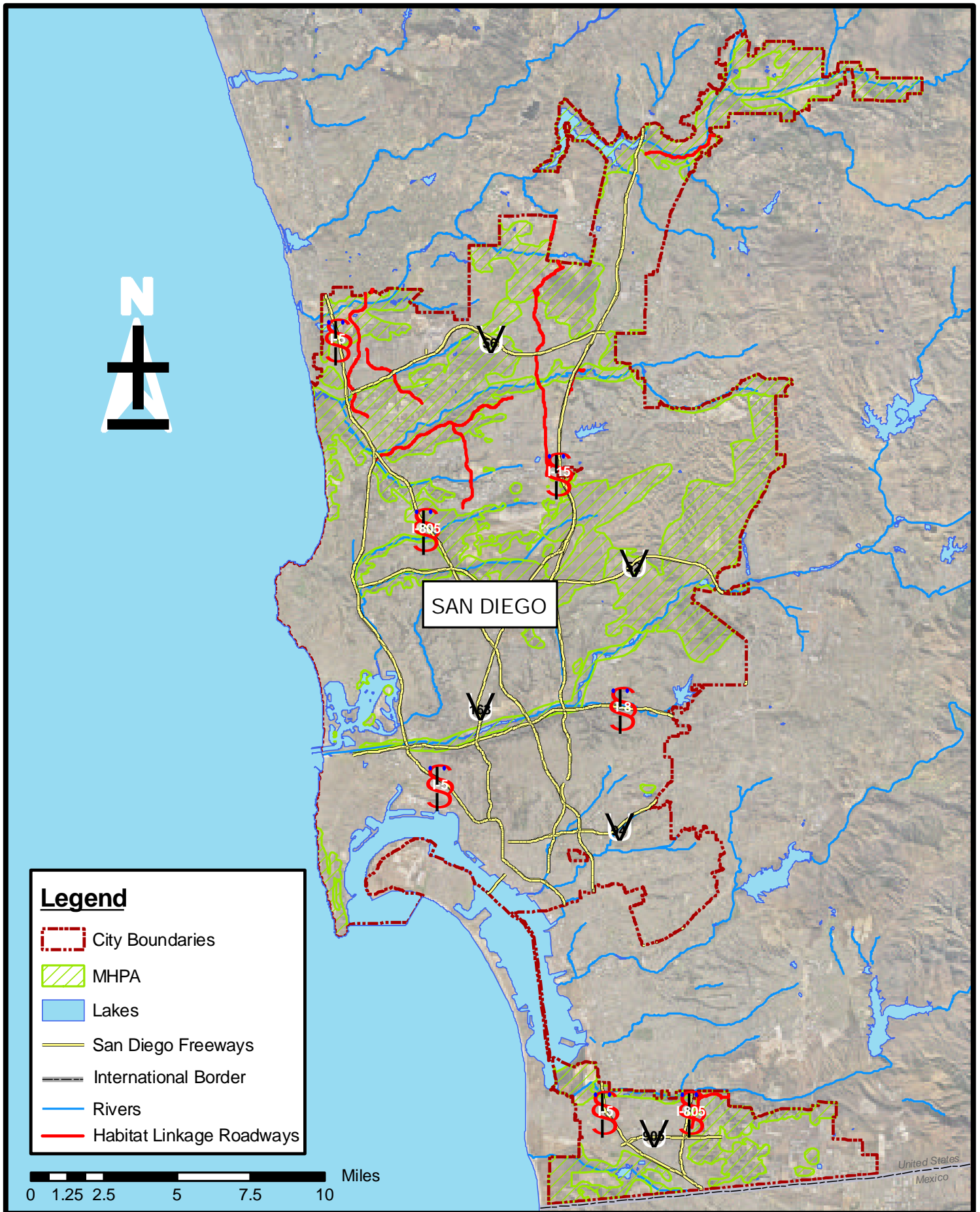
Betsy Miller, Biologist III

Roger Wammack, General Utility Supervisor, Environmental Services Department Waste  
Reduction & Enforcement

Jeanie Gaudette, Open Space Intern

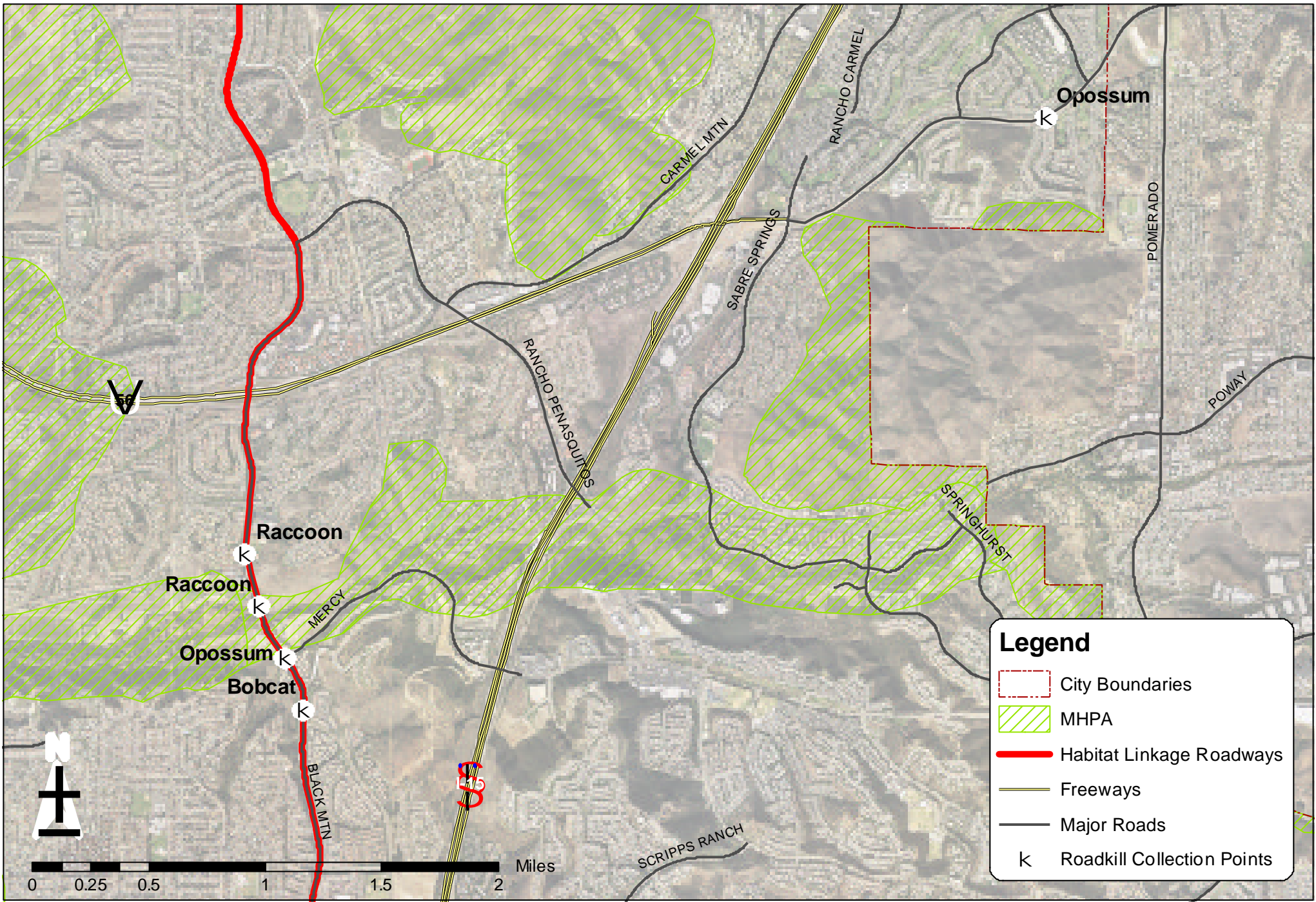
**Roadkill Records from Environmental Services Department, January 1, 2006, through December 31, 2006**

DATE	SERVICE REQUEST #	LOCATION	SPECIES	GENDER	DUPLICATE SVC REQUEST #
1/3/2006	787330	12100 TED WILLIAMS PARKWAY	OPOSSUM	UNKNOWN	
2/22/2006	801163	4215 SORRENTO VALLEY BLVD	MALLARD DUCK	UNKNOWN	
4/28/2006	815947	BLACK MOUNTAIN AND MERCY ROAD	OPOSSUM	UNKNOWN	
4/28/2006	816014	11500 BLACK MTN RD AND MERCY RD	BOBCAT	UNKNOWN	816036
5/13/2006	819735	CALLE CRISTOBAL	SKUNK	UNKNOWN	
5/20/2006	821336	CALLE CRISTOBAL AND SORRENTO VALLEY RD	DEER	UNKNOWN	821521
7/21/2006	838927	CAMINO SANTA FE AND SORRENTO VALLEY RD	RABBIT	UNKNOWN	
8/11/2006	844531	BLACK MTN ROAD AND CANYONSIDE PARK	RACCOON	UNKNOWN	
9/5/2006	852706	BLACK MTN ROAD AND TRUMAN	RACCOON	UNKNOWN	
9/13/2006	854369	SORRENTO VALLEY RD AND CARMEL MTN RD	DEER	UNKNOWN	
9/18/2006	856195	JUNIPER PARK LN AND SORRENTO VALLEY BLVD	RACCOON	UNKNOWN	
9/28/2006	857607	HIGHLAND VALLEY ROAD	OPOSSUM	UNKNOWN	
10/5/2006	UNKNOWN	NB BLACK MTN ROAD AND MERCY ROAD	RABBIT	UNKNOWN	
10/26/2006	864463	OLD EL CAMINO REAL AND ARROYO SORRENTO	RACCOON	UNKNOWN	
11/15/2006	869277	11050 LOPEZ RIDGE WAY	DEER	UNKNOWN	
11/29/2006	UNKNOWN	TED WILLIAMS PARKWAY AND LINDA	UNKNOWN	UNKNOWN	
11/30/2006	872961	12100 TED WILLIAMS PARKWAY	COYOTE	UNKNOWN	
12/11/2006	875423	SORRENTO VALLEY BLVD	DEER	UNKNOWN	
12/30/2006	879308	HIGHLAND VALLEY ROAD	SKUNK	UNKNOWN	



# City of San Diego MSCP Roadkill Monitoring MSCP Biological Monitoring Plan Habitat Linkage Roadways

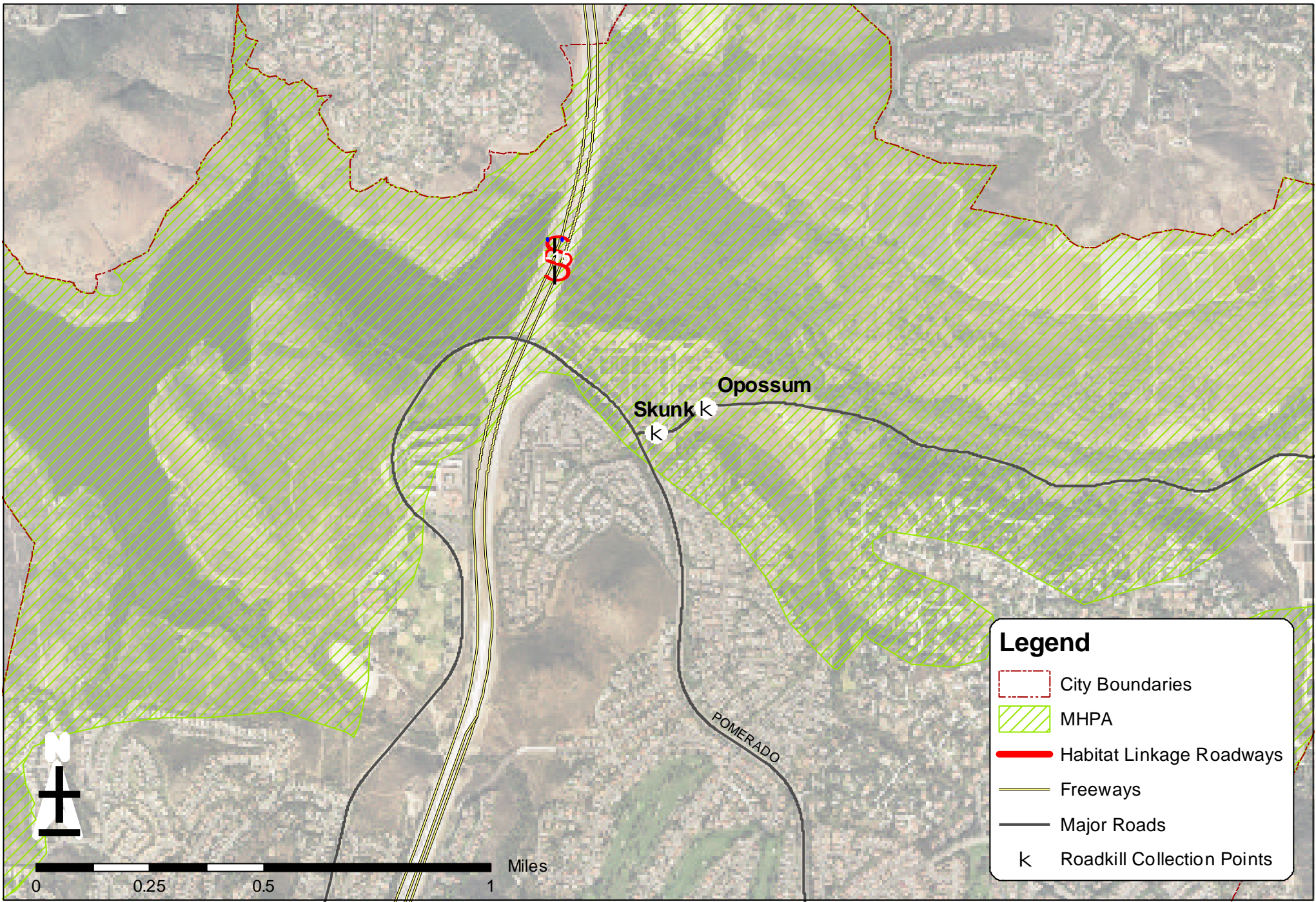
Sources: City of San Diego Environmental Services Department; SanGIS 2006 Aerial



Sources: City of San Diego Environmental Services Department; SanGIS 2006 Aerial

# City of San Diego Roadkill Collection: Black Mountain Area (January 01, 2006 - December 30, 2006)

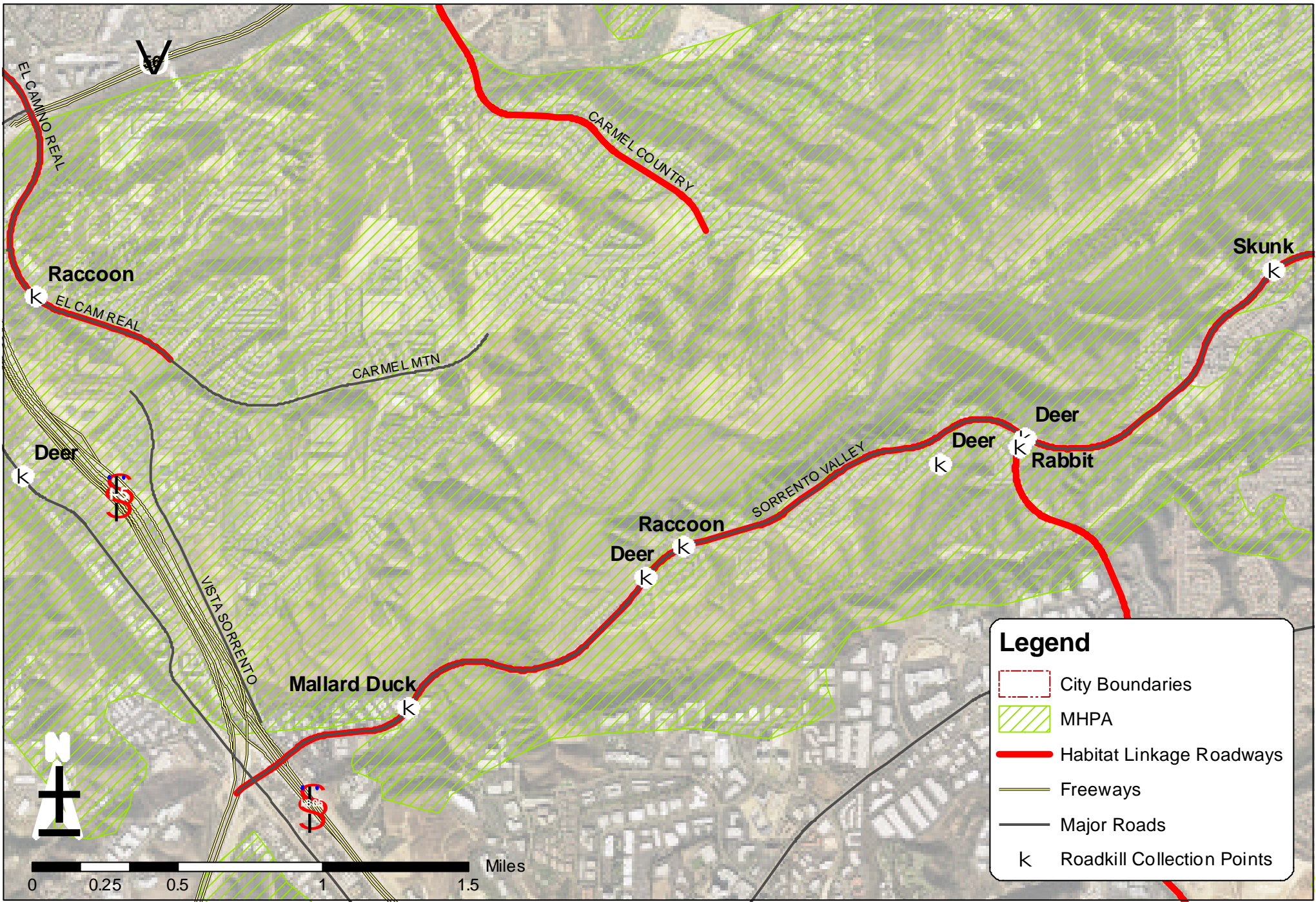




Sources: City of San Diego Environmental Services Department; SanGIS 2006 Aerial

## City of San Diego Roadkill Collection: Pomorado Area (January 01, 2006 - December 30, 2006)





Sources: City of San Diego Environmental Services Department; SanGIS 2006 Aerial

## City of San Diego Roadkill Collection: Sorrento Valley Area (January 01, 2006 - December 30, 2006)