

TORREY PINES CITY PARK GENERAL DEVELOPMENT PLAN

Torrey Pines City Park
Advisory Board Meeting
November 19, 2009

City of San Diego
Park Planning
Urban Form Division
City Planning & Community Investment



HELIX Environmental
RBF Consulting
MJE Marketing Services, Inc.
Ninyo & Moore
Accessible San Diego
PCG Utility Consultants
Hunter Pacific Group
ASM Affiliates, Inc.
San Diego Natural History Museum, Paleontology
Vonn Marie May, Cultural Land Planning & Research

TORREY PINES CITY PARK GENERAL DEVELOPMENT PLAN



Table of Contents:

Introduction-Executive Summary

The goal of this effort is to develop a physical park plan that meets the needs of the park users.

1. **Project Inventory Analysis and Outreach**
2. **Site & Facilities Evaluation**
3. **Preliminary General Development Plan Recommendations**
4. **General Development Plan**
5. **Environmental Review**
6. **Approval Process**

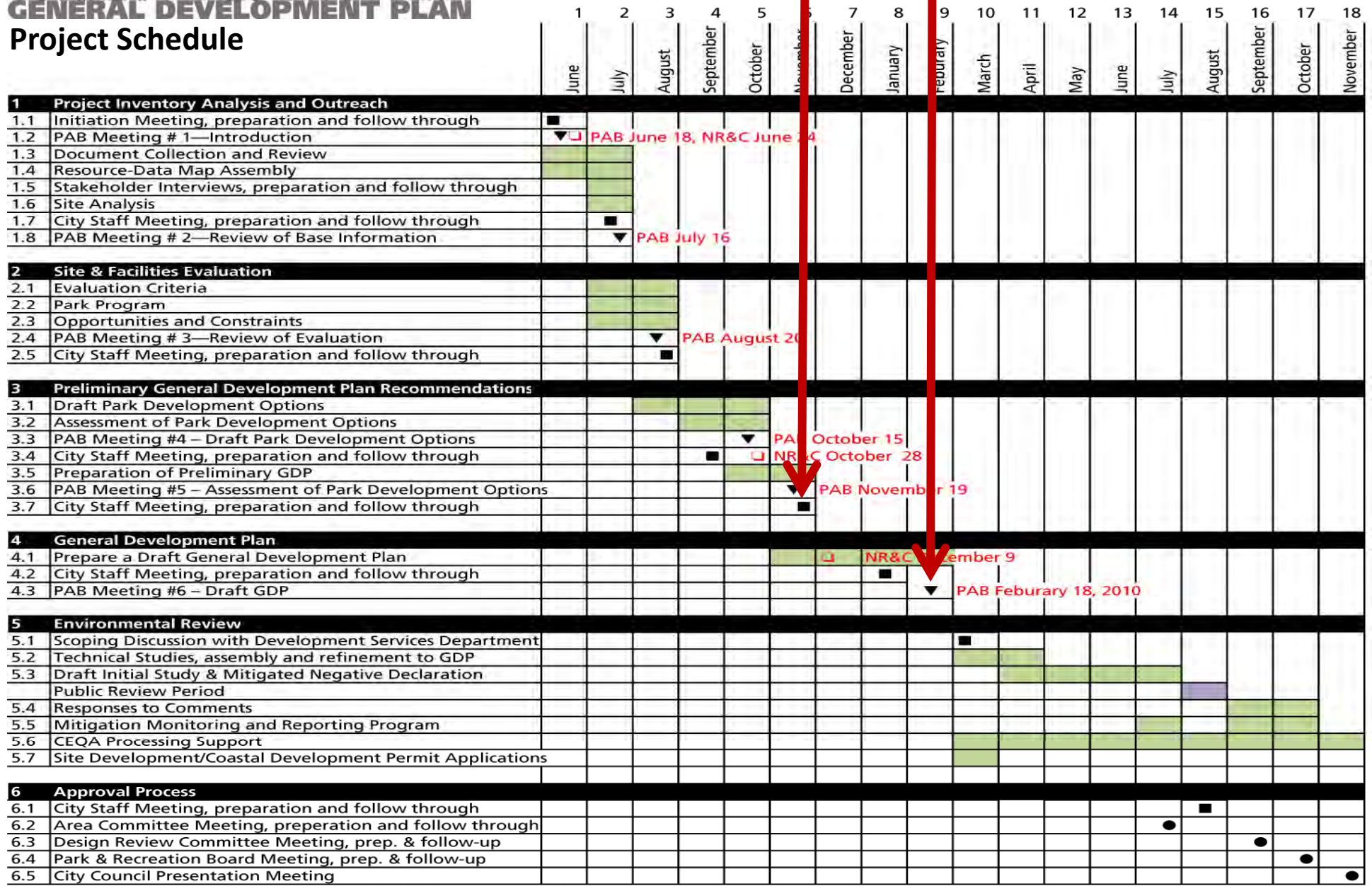
Torrey Pines City Park
Advisory Board Meeting
November 19, 2009



To protect and preserve this world renowned soaring site and the park's unique natural, historical, cultural and recreational resources.

TORREY PINES CITY PARK GENERAL DEVELOPMENT PLAN

Project Schedule



Meeting with City project management
 Torrey Pines City Park Advisory Board Meeting
 City Council Natural Resources & Culture Committee
 Other Committees or City Council presentations

■ Meeting with City project management
 ▼ June 18, July 16, August 20, October 15, November 19, February 18
 □ June 24, October 28, December 9
 ● Other Committees or City Council presentations

Project Inventory Analysis & Outreach

Stakeholder Interviews

Stakeholders (interviews completed)

Associated Glider Clubs of Southern California

California Coastal Commission

Current Lessee— California Air Adventures

Torrey Pines Gulls—Radio-Controlled Soaring Society

Torrey Pines State Park

La Jolla Historical Society

Save Our Heritage Organization (SOHO)

Kumeyaay Cultural Repatriation Committee

The San Diego County Archaeological Society

University Community Planning Group

La Jolla Community Planning Group

Hang Gliding/Torrey Hawks Hang Gliding club

Paragliding/San Diego Hang Gliding and Paragliding Association

Salk Institute

San Diego Park and Recreation Board

Historical Resources Board

Sierra Club

Surfrider Foundation, San Diego Chapter

Torrey Pines Association

University of California, San Diego

TORREY PINES CITY PARK **GENERAL DEVELOPMENT PLAN**

City Offices:

- **Mayor's Office of Ethics and Integrity, Disability Services**
- **Golf Operations, Torrey Pines**



What improvements should be considered?



2. Site Facilities and Evaluation

Park Program

Flight – *provide access to wind-powered soaring*

Beach Access – *provide a physical link from the bluff to the ocean*

Conservation – *preserve and enhance the natural and cultural resources*

Education – *provide interpretation of resources – natural & cultural*

Passive Recreation – *provide for the enjoyment of natural open space*

Support Facilities – *components to be shared by all users*

Evaluation Criteria

Soaring

improve the access and experience

Aesthetics

improve the existing visual character or quality

Biological Resources

improve the vitality of native plant and animal species

Cultural Resources

preserve and acknowledge people's use of the site

Geology and Soils

preserve the structure and minimize erosion

Hydrology and Water Quality

detain and cleanse stormwater drainage

Recreation

increase opportunities for the public's use

Community Benefit

improve public perception and enjoyment

Transportation

improve accessibility, circulation and parking

Utility and Service Systems

use low impact infrastructure

Value Added

increase the collaborative opportunities

TORREY PINES CITY PARK

GENERAL DEVELOPMENT PLAN



Preliminary Recommendations November 19, 2009

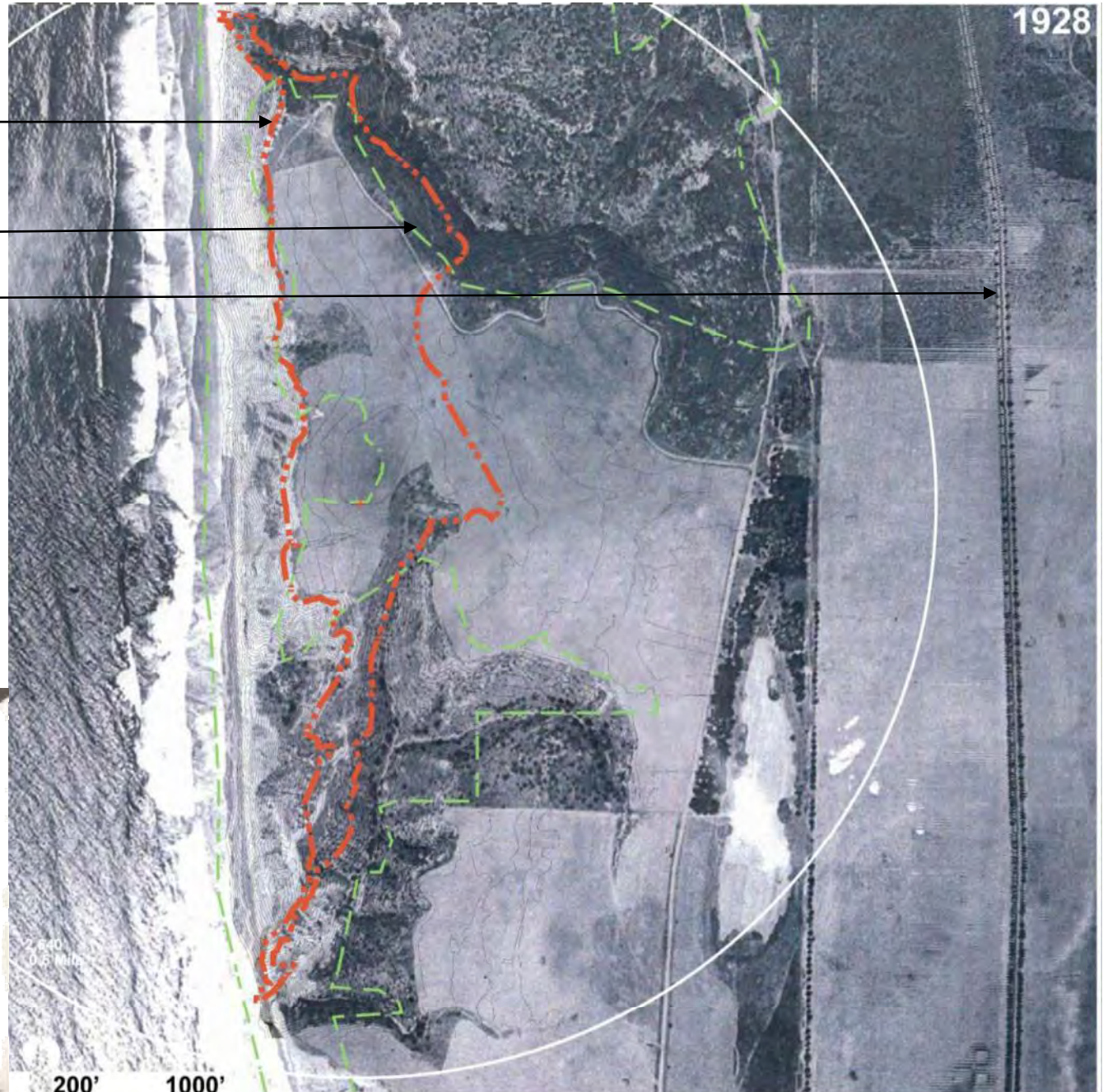
Park Program	Existing	Proposed	Notes
Flight <i>to provide access to wind-powered soaring</i>			
Take-off/landing set-up area, hang glider tie downs	2 acres	2 acres	Airfield planted with native grasses
Flight operations building, inc: retail, classroom, storage	2,250 SF	3,000 SF	located to minimize flight/wind disturbance, access to all, allow visual control of the site, meet code, shelter, inspire and educate
Exterior Storage	1,070	1,200 SF	
Radio Control Flight Pit	2,400 SF	3,200 SF	sheltered work area, launch landing area
Observation Deck	345 SF	7,600 SF	seating at deck perimeter, movable chairs and tables
Dedicated pilot parking (50 vehicles)	30 vehicles	50	30 daily, with up to 50 for special events
Loading area		✓	
Web camera		✓	
Weather station		✓	
Beach Access <i>to provide a physical link from the bluff to the beach & ocean</i>			
North Bluff Pedestrian path/stair	1,000 LF	LF	minimal wood steps and rail as needed, retreat with erosion
South Bluff Pedestrian path/stair	1,500 LF	LF	minimal wood steps and rail as needed, retreat with erosion
City/UCSD ADA program access via Blackgold Road			Confirm & Coordinate with City / UCSD for ADA access
Conservation <i>to preserve and enhance the natural and cultural resources</i>			
Minimize disturbance		✓	limit excavation, fill to achieve needed grade
Selective cap areas for improvement		✓	import gap-graded structural soil for stormwater detention
Plant habitat restoration	6 acres	16 acres	Including Southern Coastal Bluff Scrub, Scrub Oak Chaparral, Diegan Coastal Sage Scrub
Temporary fencing for plant habitat establishment		✓	
Temporary, seasonal hand-watering		✓	
Monitoring		✓	
Stormwater detention-use		✓	

Park Program	Existing	Proposed	Notes
Education			<i>to provide interpretation of resources – natural & cultural</i>
Signage			Integrated program for orientation, regulatory and interpretive for soaring, cultural & natural resources
Ranger			parking space, desk, storage
Museum Building			allow for w/in Flight Op. Bldg., or new building on south bluff, or with Salk Institute
Gathering areas for programs, schools			open grass areas of the north and or south bluffs
Nature camera to observe bird nesting			
Website for Torrey Pines City Park			City of San Diego
Passive Recreation			<i>to provide for the enjoyment of natural open space</i>
Nature trails		2 miles	ADA accessible
Seating			as appropriate, out of flight zones
Picnic tables			as appropriate, out of flight zones
Observation decks	1	5	various sizes to accommodate (flight operations deck is largest)
Multiple places to host a variety of gatherings			north bluff native grass area
Fire ring			when approved by the City of San Diego
Telescopes			as appropriate, out of flight zones
Trail linking City Park to the golf course and the State Natural Reserve			
Support Facilities			<i>to provide components to be shared by all users</i>
Parking – for 565 vehicles	565	565	
Offsite parking, on Torrey Pines Scenic Drive	135	135	40' curb to curb city street
Shuttle drop-off and parking		✓	circulation layout allows flexibility to accommodate shuttles & buses
Shuttle program			Coordinate with MTDB
Bicycle racks	1		
ADA paths		✓	
Restrooms – vault		2	compare costs with built in, and drinking fountain and shower
Food service – café	465	500	compare costs with destination restaurant
Life Guard Observation Platform			for summer season use, allow public use in off-season
Water, sewer, electrical connect to City			get costs
Emergency lighting			included in the buildings (Flight Operations, restrooms, etc.)
Trash collection		✓	
Emergency vehicle access		✓	
Stormwater collection system		✓	
Park boundary and barriers		✓	
WIFI			

1928

Historic Context



-  General Development Plan boundary
-  Multi-Habitat Planning Area boundary
- Highway 101

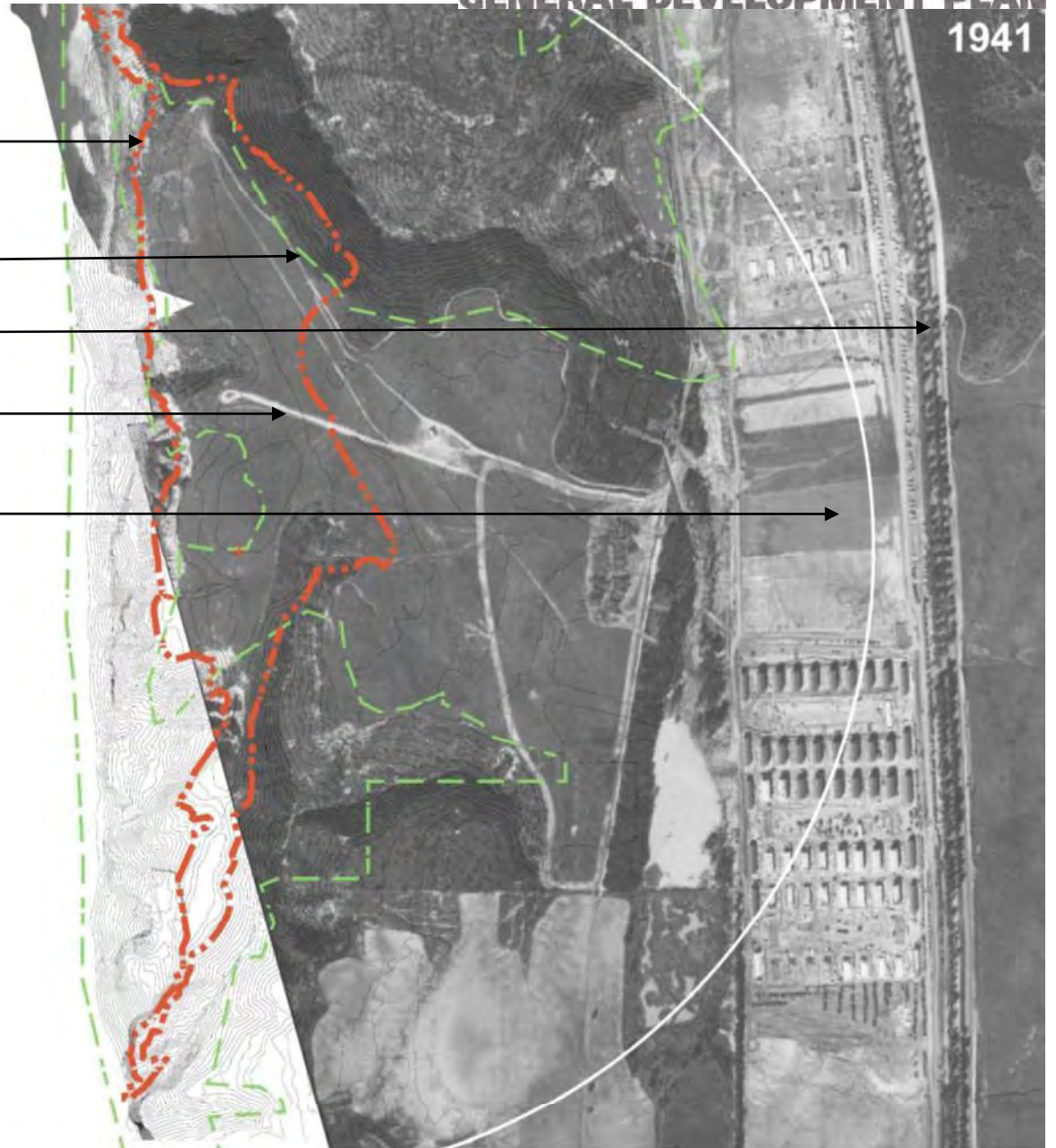


Anne Morrow Lindbergh in a Model A Albatross, (Charles on the ground) launched from Mt. Soledad Pines, January 1930.




Historic Context


-  General Development Plan boundary
-  Multi-Habitat Planning Area boundary
- Highway 101
- Glider Runway
- Camp Callan



200' 1000'

Historic Context

 General Development
Plan boundary

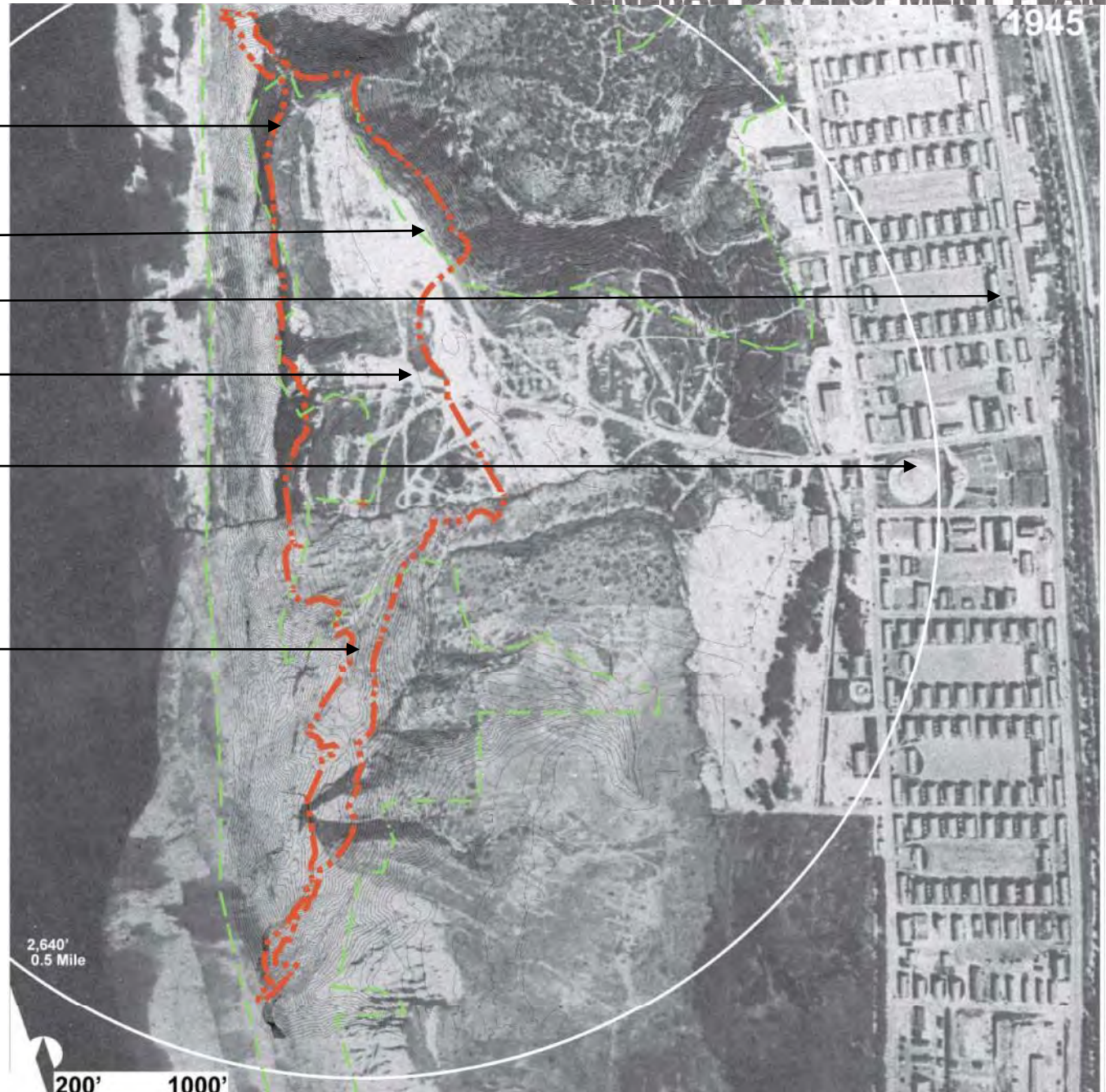
 Multi-Habitat Planning
Area boundary

Highway 101

Glider Runway

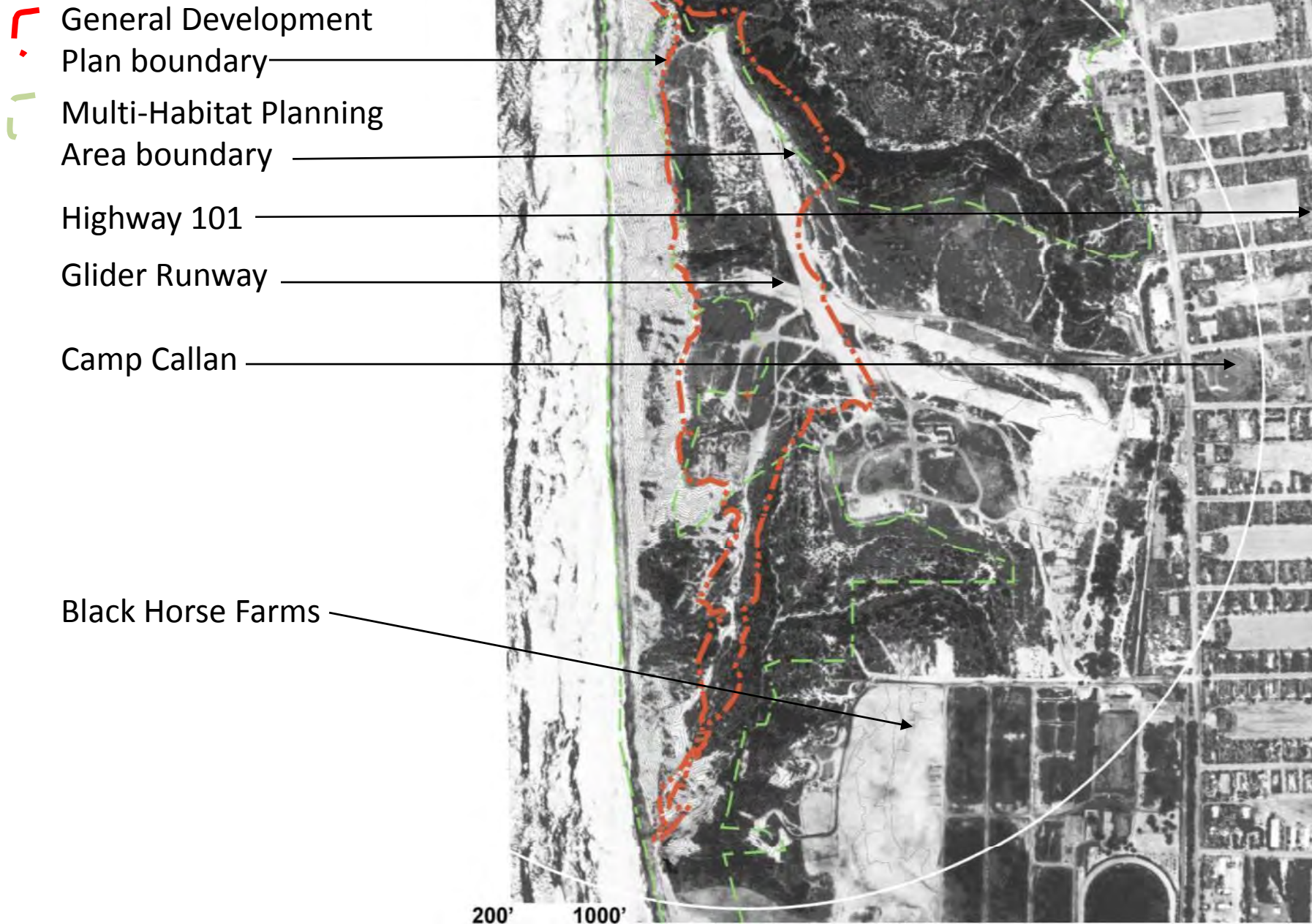
Camp Callan
water tank,
amphitheater

Military Secrets
Camp Callan Artillery
Battalion





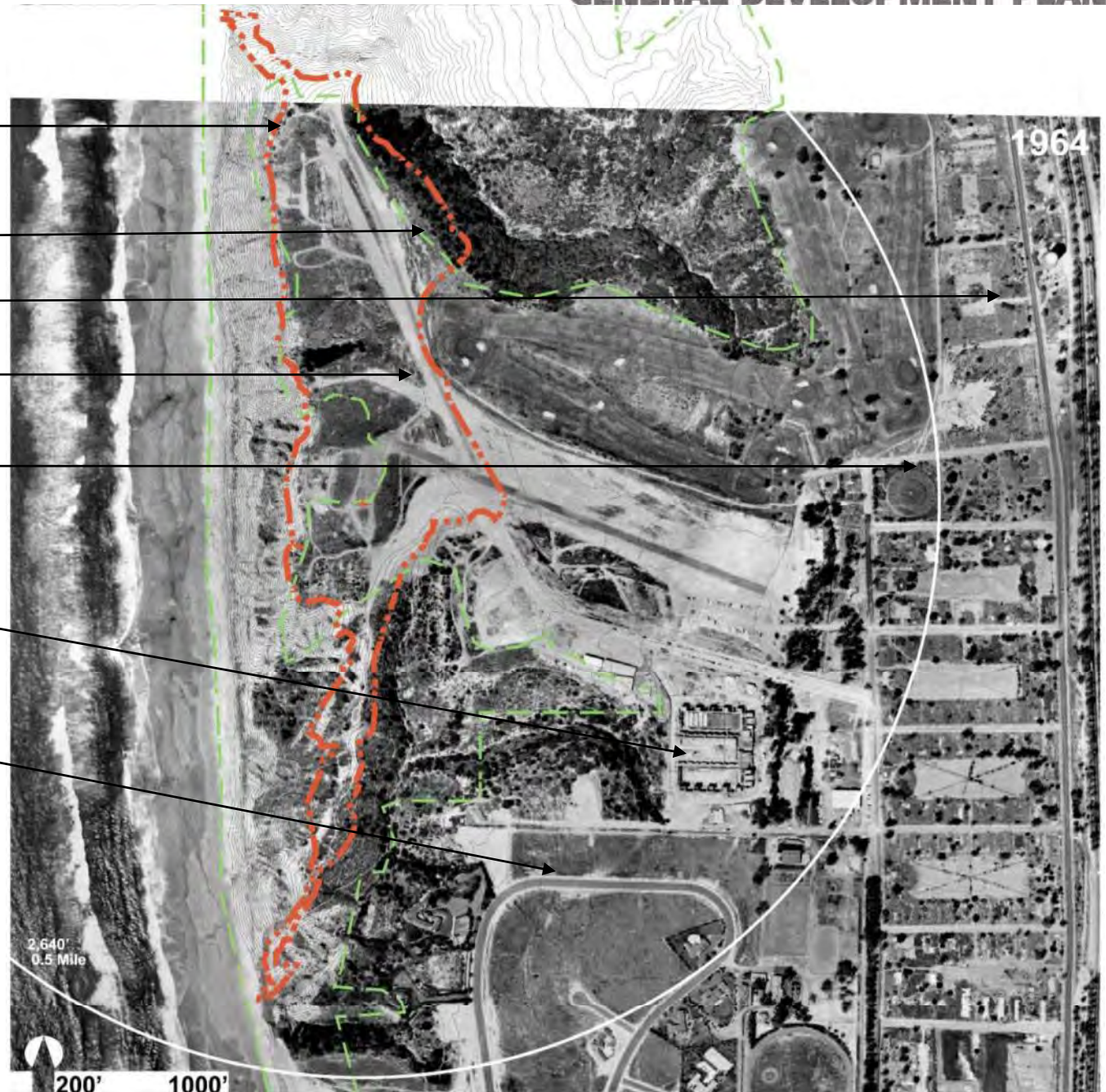
1957

Historic Context





Historic Context

-  General Development Plan boundary
-  Multi-Habitat Planning Area boundary
- Highway 101
- Glider Runway
- UCSD
- Salk Institute
- Black Horse Farms



TORREY PINES CITY PARK GENERAL DEVELOPMENT PLAN






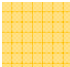

2009

-  General Development Plan boundary
-  Multi-Habitat Planning Area boundary
- North Torrey Pines Road
- Glider Runway
- UCSD
- Salk Institute
- Black Horse Farms



Site Facilities and Evaluation Constraints






TORREY PINES CITY PARK GENERAL DEVELOPMENT PLAN

-  National Historic Register boundary
-  General Development Plan boundary
-  Cliff edge
-  Flight area no permanent obstacles taller than 12'
-  Significant native Vegetation
-  Peregrine Falcon Use area
-  Multi-Habitat Planning Area boundary



Site Facilities and Evaluation Opportunities

TORREY PINES CITY PARK GENERAL DEVELOPMENT PLAN

-  Launch & Landing
-  Seasonal Runway
Keep clear for fixed-wing gliders
-  Building & parking
-  Beach Access
-  Habitat Restoration



TORREY PINES CITY PARK GENERAL DEVELOPMENT PLAN

North Beach Trail improvements

Parking for 565

10 acres new native vegetation

Preservation of cultural resources, Kumeyaay, Camp Callan, etc.

Airfield, native grasses

Flight Operations Building

Continued use of fixed-wing glider runways (UCSD)

Improvements to "Citizen's Trail" from the south bluff



TORREY PINES CITY PARK GENERAL DEVELOPMENT PLAN

North Beach Trail

North Bluff Parking for 278

Trails to observation decks-piers

Restroom

North Bluff – open native grasses

10 acres new native vegetation

Parking for 53

Parking for 64

Airfield – open native grasses

Gliderport Operations Building

Restroom

Deck

South Bluff Parking for 170

South Bluff—picnic, trails, lookouts

South Beach Trail



3. Preliminary General Development Plan Recommendations Assessment of Park Development Options

*Flight—provide access to
wind-powered soaring*

Fixed Wing Runways
for use in springtime
flying season

These corridors will
be filled to generally
smooth surfaces,
paved and planted
(low native grass, and
groundcover)

Radio Control area to
include sheltered
work area, launch &
landing surface



3. Preliminary General Development Plan Recommendations Assessment of Park Development Options

*Flight—provide access to
wind-powered soaring*

Path from parking

Restored native vegetation

Radio Control Flight Pit
sheltered work area

Hanglider, Paraglider Launch
& Landing Airfield

Dedicated Pilot Parking

Observation Deck

Flight Operations Building
(new location to assist flight)

Loading area

South Bluff picnic area

Lifeguard pier

Trails

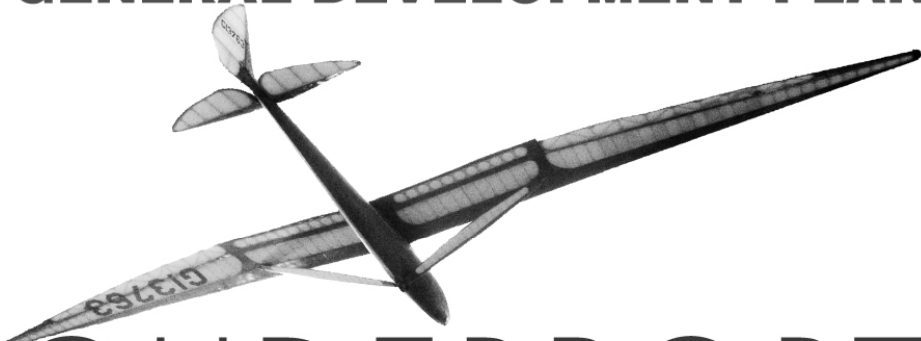
Pedestrian barriers



3. Preliminary GDP Recommendations Assessment of Park Development Options

Flight— provide access to
wind-powered soaring

TORREY PINES CITY PARK GENERAL DEVELOPMENT PLAN



GLIDERPORT

Program

- 3,000 sf Administration, Retail, Classroom
- 500 sf Food Service
- 1,200 sf Storage

May be on two levels if accessible

- Solar powered- electrical system, including emergency lighting
- Minimize wind disturbance to the airfield
- No water, sewer
- Limit excavation – to protect cultural resources and minimize geological impact
- Observation deck



3. Preliminary GDP Recommendations Assessment of Park Development Options

Beach Access – *provide a physical link from the bluff to the ocean*

Northern trail to the beach—improved with segments of wooden steps and handrails



3. Preliminary GDP Recommendations Assessment of Park Development Options

Beach Access – *provide a physical link from the bluff to the ocean*

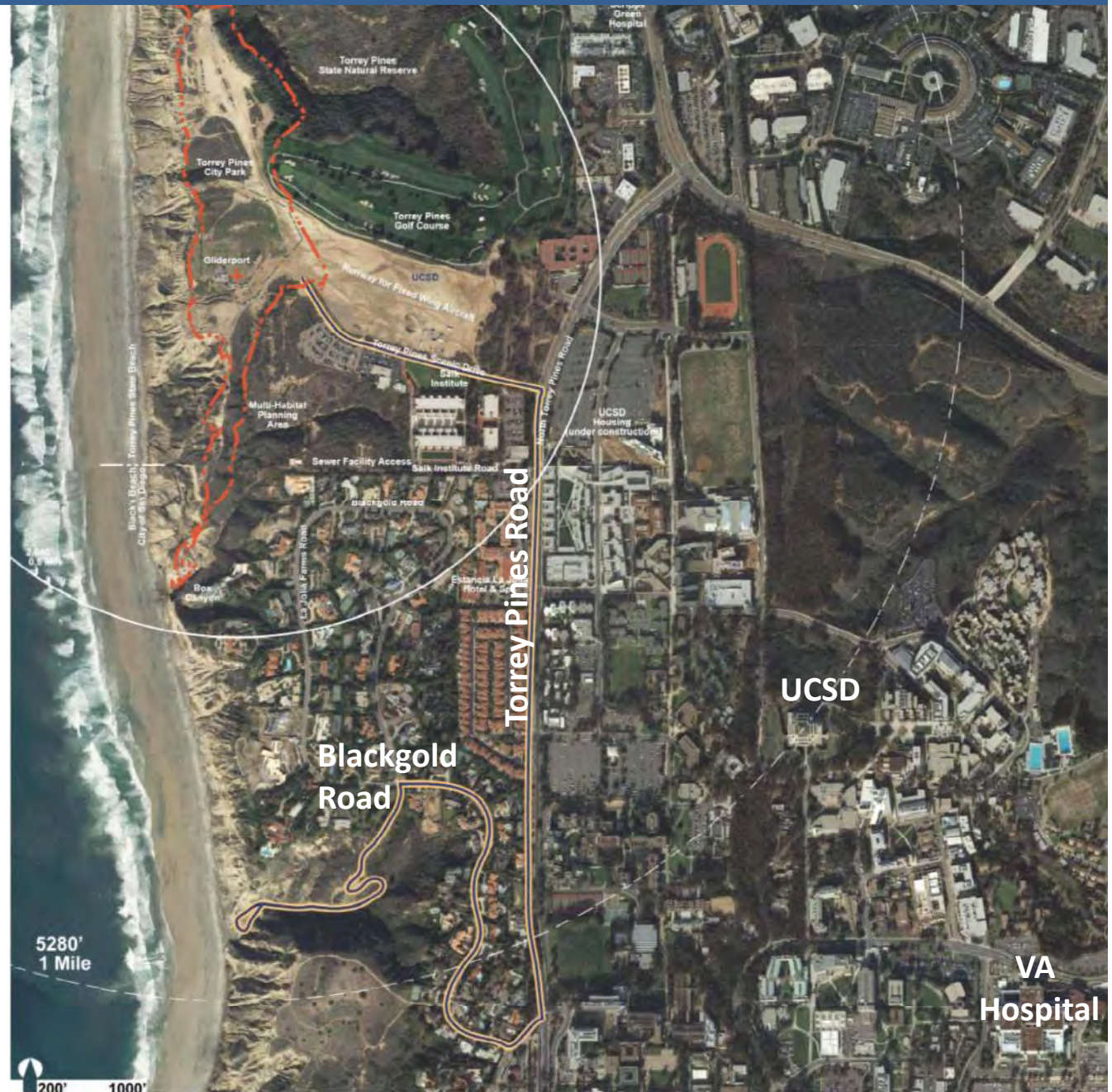
Southern trail to the beach—improved with segments of wooden steps and handrails



3. Preliminary GDP Recommendations Assessment of Park Development Options

Beach Access
provide a physical link from the bluff to the ocean

- City/UCSD Recreation program access via Blackgold Road
- The program must offer a lift-equipped vehicle.
- The existing paved area at the beach should serve as a firm surface for an accessible staging area.
- Beach mats and/or power beach chairs will provide access to the beach and ocean.



3. Preliminary GDP Recommendations Assessment of Park Development Options

Conservation – *preserve and enhance the natural and cultural resources*

- Existing (6 acres) native vegetation of varied quality hosts
 - Coastal California Gnatcatcher *Polioptila californica californica*)
 - Peregrine Falcon (*Falco peregrinus*)

- 10 Acres** of NEW native vegetation planting including:
 - Southern Coastal Bluff Scrub,
 - Scrub Oak Chaparral,
 - Diegan Coastal Sage Scrub
 - Native grasses on the Airfield and North Bluff



3. Preliminary GDP Recommendations Assessment of Park Development Options

Conservation – *preserve and enhance the natural and cultural resources*

Native Coastal Vegetation

Part 1

Latin name	Common name	Gliderport Airfield	Low-mow Meadow	Ornamental	Bio-filtration	Restoration			Growth form
						Diegan Coastal Sage Scrub	Maritime Succulent Scrub	Coastal Bluff Scrub	
<i>Achillea millefolium</i>	Yarrow	x	x		x	x	x		herb
<i>Agave shawii</i>	Shaw's Agave			x					succ
<i>Agrostis pallens</i>	San Diego Bent Grass	x	x						grass (spreading)
<i>Armeria maritima</i>	Thrift Seapink			x					herb
<i>Artemisia californica</i>	California Sagebrush					x	x	x	shrub
<i>Atriplex canescens</i>	Fourwing Saltbush							x	shrub
<i>Baccharis pilularis</i>	Coyote Bush			x					shrub
<i>Calystegia macrostegia</i>	Island Morning Glory			x		x		x	herb/vine
<i>Carex pansa</i>	California Meadow Sedge	x	x		x				sedge (spreading)
<i>Carex praegracilis</i>	Clustered Field Sedge	x	x		x				sedge (spreading)
<i>Castilleja affinis</i>	Coast Indian Paintbrush		x					x	herb
<i>Ceanothus hearstiorum</i>	Hearst's Ceanothus			x					groundcover
<i>Ceanothus maritimus</i>	Maritime Ceanothus			x					groundcover
<i>Cylindropuntia prolifera</i>	Coastal Cholla					x	x		succ
<i>Deinandra fasciculata</i>	Clustered Tarweed					x	x	x	herb

3. Preliminary GDP Recommendations Assessment of Park Development Options

Conservation – *preserve and enhance the natural and cultural resources*

Native Coastal Vegetation

Part 2

Latin name	Common name	Gliderport Airfield	Low-mow Meadow	Ornamental	Bio-filtration	Restoration			Growth form
						Diegan Coastal Sage Scrub	Maritime Succulent Scrub	Coastal Bluff Scrub	
<i>Distichlis spicata</i>	Salt Grass	x	x		x				grass (spreading)
<i>Dudleya edulis</i>	San Diego Dudleya			x					succ
<i>Dudleya pulverulenta</i>	Chalk Dudleya			x					succ
<i>Encelia californica</i>	Coast Sunflower					x	x	x	shrub
<i>Eriogonum arborescens</i>	Santa Cruz Island Buckwheat			x		x	x	x	shrub
<i>Eriogonum cinereum</i>	Ashy Leaf Buckwheat			x		x	x	x	shrub
<i>Eriogonum fasciculatum</i>	California Buckwheat			x		x	x	x	shrub
<i>Eriogonum grande var. rubescens</i>	Red Buckwheat			x		x	x	x	shrub
<i>Eriophyllum confertiflorum</i>	Golden Yarrow			x		x	x	x	herb
<i>Eschscholzia californica</i>	California Poppy		x						herb
<i>Euphorbia misera</i>	Cliff Spurge						x		shrub
<i>Ferocactus viridescens</i>	Coast Barrel Cactus						x		succ
<i>Festuca rubra</i>	Red Fescue (Molate)	x	x						grass (spreading)
<i>Grindelia stricta var. platyphylla</i>	Spreading Gum Plant		x	x					herb
<i>Heteromeles arbutifolia</i>	Toyon			x					shrub
<i>Isocoma menziesii</i>	Menzies' Goldenbush			x		x		x	shrub

3. Preliminary GDP Recommendations Assessment of Park Development Options

Conservation – preserve and enhance the natural and cultural resources

Native Coastal Vegetation

Part 3

Latin name	Common name	Restoration						Growth form
		Gliderport Airfield	Grass Meadow	San Geronimo	Time Succulent Scrub	Bluff Scrub		
<i>Isomeris arborea</i>	Bladderpod							shrub
<i>Juncus patens</i>	California Gray Rush							rush
<i>Lavatera assurgentiflora</i>	Tree Mallow; Malva Rosa							shrub
<i>Layia platyglossa</i>	Tidy Tips							herb
<i>Lessingia filaginifolia</i>	California Aster							herb
<i>Leymus condensatus</i>	Giant Wild Rye				x			grass
<i>Leymus triticoides 'Gray Dawn'</i>	Gray Dawn Creeping Rye				x			grass (spreading)
<i>Linum lewisii</i>	Blue Flax							herb
<i>Lotus scoparius</i>	Deerweed				x		x	shrub
<i>Lupinus bicolor</i>	Miniature Lupine		x					herb
<i>Malacothrix saxatilis</i>	Cliff Aster						x	herb
<i>Malosma laurina</i>	Laurel Sumac			x				shrub
<i>Marah macrocarpus</i>	Wild Cucumber				x		x	herb
<i>Mimulus aurantiacus</i>	Bush Monkey Flower			x	x			shrub
<i>Nassella lepida</i>	Foothill Needlegrass		x	x	x	x	x	bunchgrass
<i>Nassella pulchra</i>	Purple Needlegrass		x	x	x	x	x	bunchgrass

3. Preliminary GDP Recommendations Assessment of Park Development Options

Conservation – *preserve and enhance the natural and cultural resources*

Native Coastal Vegetation

Part 4

Latin name	Common name	Gliderport Airfield	Low-mow Meadow	Ornamental	Bio-filtration	Restoration			Growth form
						Diegan Coastal Sage Scrub	Maritime Succulent Scrub	Coastal Bluff Scrub	
<i>Opuntia littoralis</i>	Coastal Prickly Pear					x	x	x	succ
<i>Platanus racemosa</i>	California Sycamore				x				tree
<i>Pinus torreyana</i>	Torrey Pine			x					tree
<i>Quercus dumosa</i>	Nuttall's Scrub Oak			x		x	x	x	shrub
<i>Rhus integrifolia</i>	Lemonadeberry			x		x	x	x	shrub
<i>Salvia apiana</i>	White Sage			x					shrub
<i>Salvia brandegei</i>	Brandegee's Sage			x					shrub
<i>Salvia mellifera</i>	Black Sage					x			shrub
<i>Sidalcea malviflora</i>	Checkerbloom		x	x					herb
<i>Sisyrinchium bellum</i>	Blue-eyed Grass		x	x					herb
<i>Yucca schidigera</i>	Mohave Yucca					x	x		succ

3. Preliminary GDP Recommendations Assessment of Park Development Options

Conservation – preserve and enhance
the natural and cultural resources

Stormwater Lift

100 yr/24 hour Event Pre/Post Development Volumes
I = 3.8 "I" from SD County Isopluvial maps

Basin	Area (SF)	As Undisturbed*		Post Development		Change in Volume
		C	Volume	C	Volume	
A	117,612 SF			0.85 **	31,657 CF	0 CF
B1	82,764 SF			0.85 **	22,277 CF	0 CF
B2	58,343 SF			0.90 **	16,628 CF	0 CF
C1	731,148 SF	0.35 ^	81,036 CF	0.68	157,441 CF	76,405 CF
C2	248,314 SF	0.35 ^	27,521 CF	0.85	66,838 CF	39,316 CF
D	92,249 SF	0.35 ^	10,224 CF	0.35	10,224 CF	0 CF
E	36,085 SF	0.35 ^	3,999 CF	0.65	7,427 CF	3,428 CF
F	28,526 SF	0.35 ^	3,162 CF	0.35	3,162 CF	0 CF
G	83,702 SF	0.35 ^	9,277 CF	0.45	11,928 CF	2,651 CF
H	91,169 SF	0.35 ^	10,105 CF	0.85	24,540 CF	14,435 CF
I	254,020 SF	0.35 ^	28,154 CF	0.85	68,374 CF	40,220 CF
J	13,689 SF	0.35 ^	1,517 CF	0.35	1,517 CF	0 CF
K	361,266 SF	0.35 ^	40,040 CF	0.35	40,040 CF	0 CF
L	120,701 SF	0.35 ^	13,378 CF	0.35	13,378 CF	0 CF
	2,319,588 SF		228,413 CF		475,430 CF	176,455 CF

C=.85, 2.7 Acres, per Salk
C=.85, 1.9 Acres per Salk
C=.90, Road & ROW, per Salk
50% @ .90 (office/prof); 50% (sports/Park)
Gliderport Parking
Revegetated, sloping
Concession Bldg
Revegetated, sloping
Turfed Knoll
Parking
Parking
Revegetated, sloping
Revegetated, sloping
Revegetated, sloping

* Assumed pre-European impacts
** Assumed same pre-and post- project development condition, for Salk Property & Entry Road.
^ Project Soil Type "D"
(C = .35 for undisturbed natural terrain)

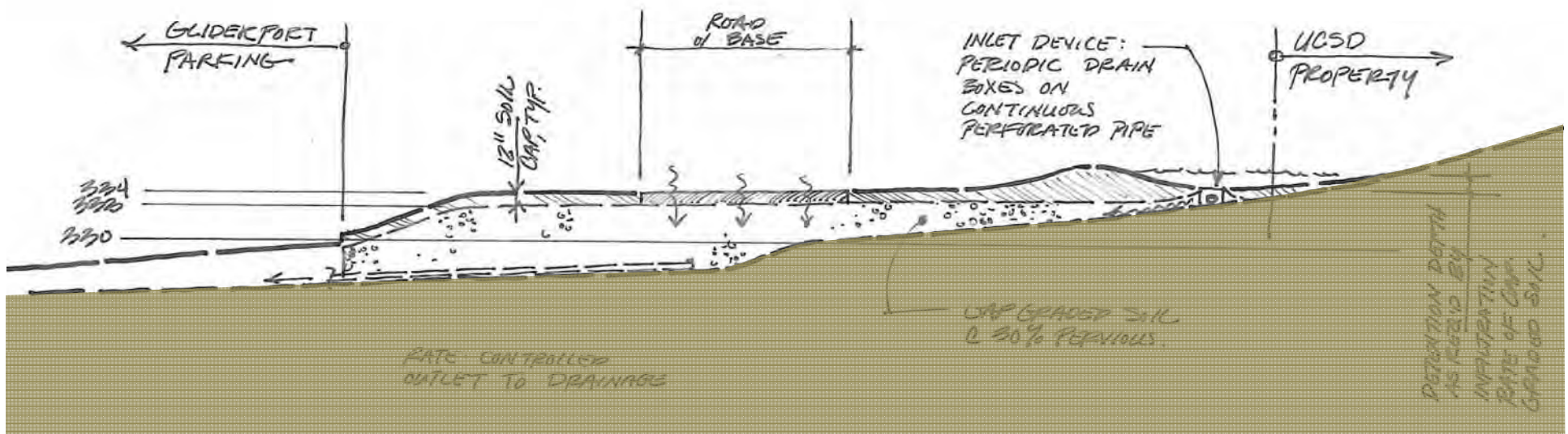
Assumptions/Considerations

Storm Volume: Q = CiA

Q = Total Volume in Cubic Feet
C = Runoff Coefficient
I = Storm Duration (not peak "I")
A = Area in Square Feet

C1 Stormwater Storage (post-development increase, only) 76,405 CF Volume

POND		GRAVEL BLANKET (30% Void Space)		BURIED MANIFOLD (Pipes@90% Capacity)	
2 FT	38,202 SF	1 FT	254,683 SF	3 FT DIA.	3,003 LF
3 FT	25,468 SF	2 FT	127,342 SF		
		3 FT	84,894 SF		



3. Preliminary GDP Recommendations Assessment of Park Development Options

Conservation – *preserve and enhance
the natural and cultural resources*



Get a National Historic Register plaque



Camp Callan Post Office foundation, on UCSD property



Naval Calibration Tower
1926

Cultural Landscape Features



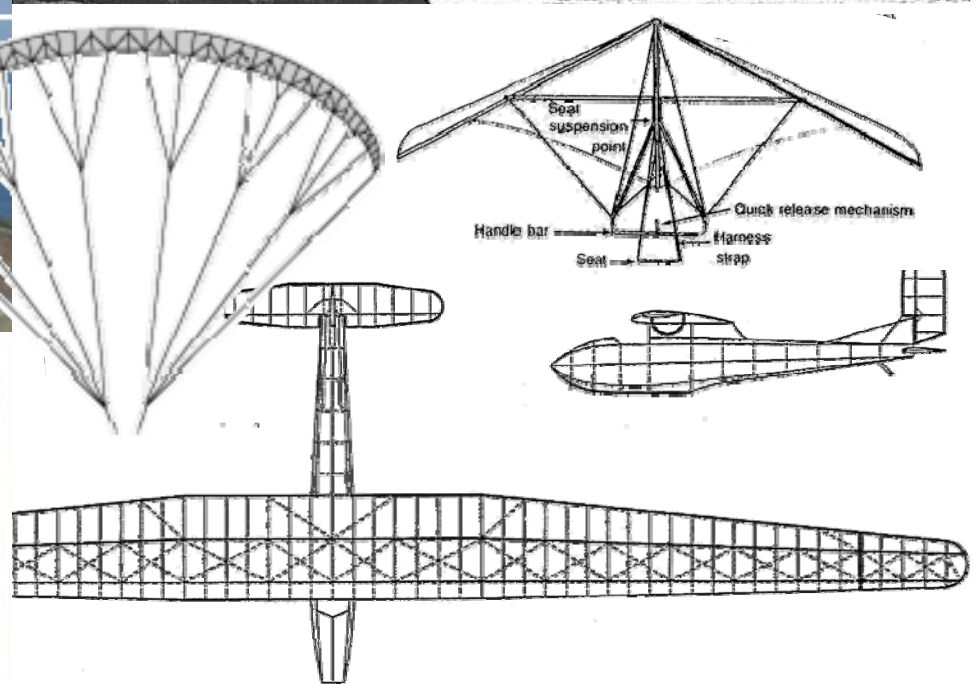
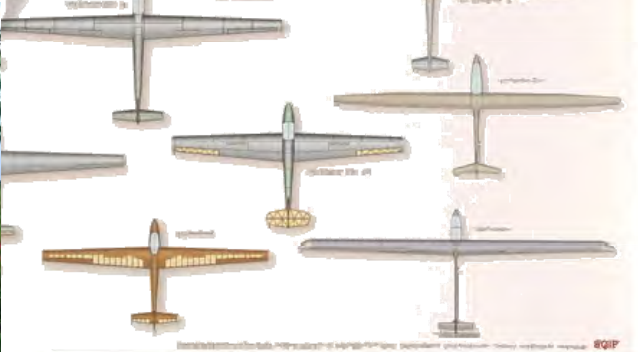
Camp Callan Artillery Battalion from 1942



Camp Callan

3. Preliminary GDP Recommendations Assessment of Park Development Options

Education – provide interpretation
of resources – natural & cultural



3. Preliminary GDP Recommendations Assessment of Park Development Options

Education – provide interpretation
of resources – natural & cultural

Signage

- Entry
- Orientation
- Regulatory
- Interpretive



Audio as well as visual interpretative programs if such features are provided.



Interpretive signage integrated in pavement and buildings



3. Preliminary GDP Recommendations Assessment of Park Development Options

Education – provide interpretation
of resources – natural & cultural

Park Entry



3. Preliminary GDP Recommendations Assessment of Park Development Options

Education – provide interpretation
of resources – natural & cultural

Potential museum sites:

- On area previously occupied by Camp Callan Battalion Control Station
- Shared with the Salk Institute Community Building



3. Preliminary GDP Recommendations Assessment of Park Development Options

Passive Recreation – *provide for the enjoyment of natural open space*

North beach trail

Turn around

Parking

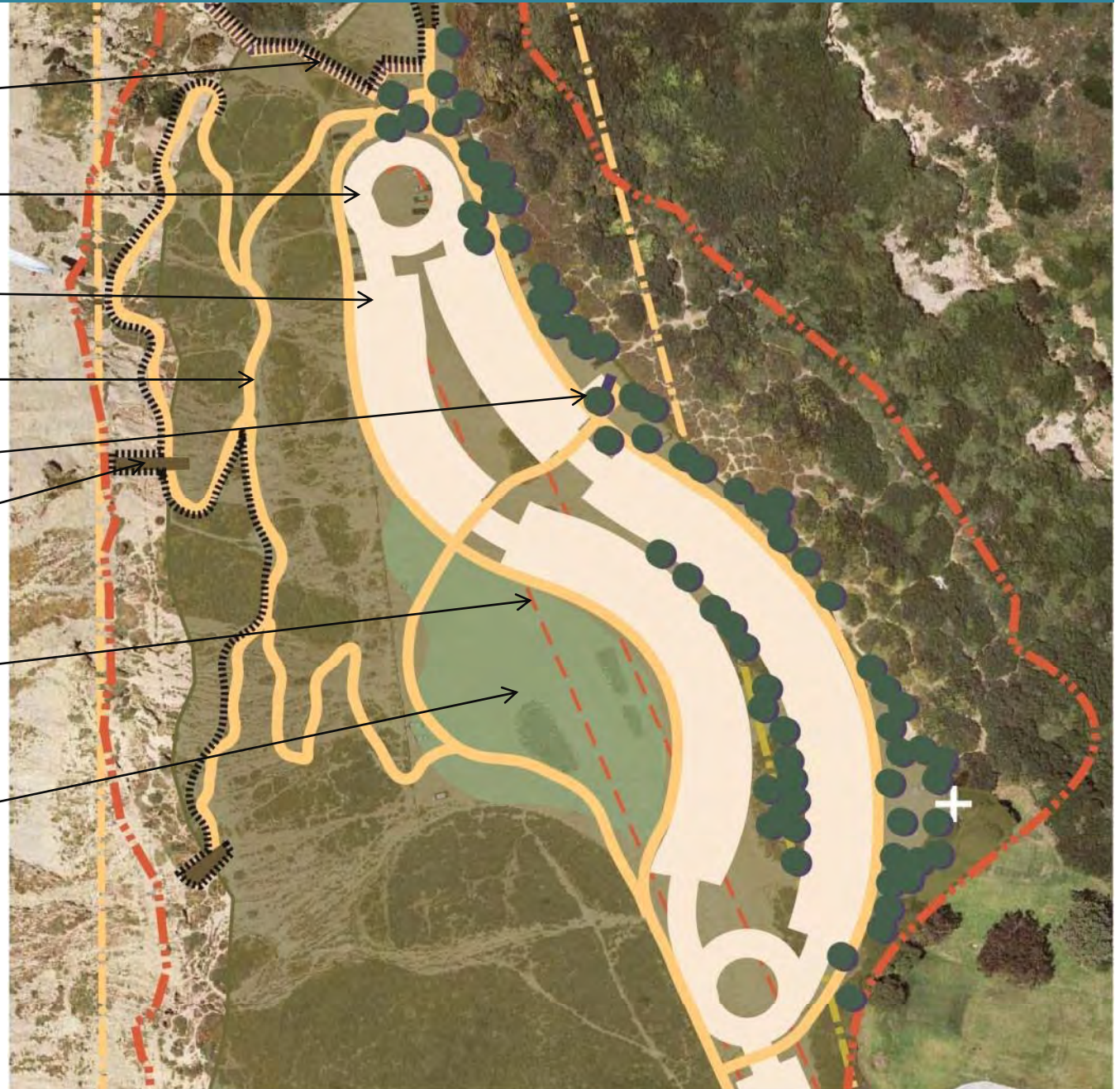
Trails

Restroom

Pier Overlook

Seasonal runway for fixed wing gliders

North Bluff open native grass



3. Preliminary GDP Recommendations Assessment of Park Development Options

Passive Recreation – *provide for the enjoyment of natural open space*

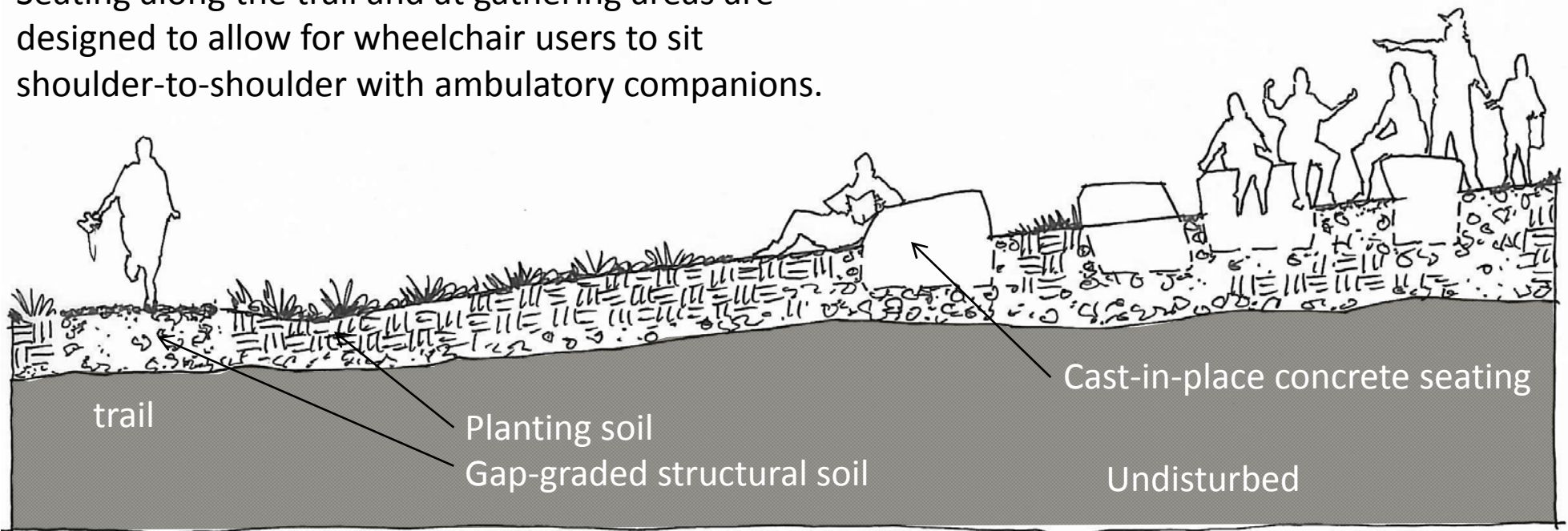


Seating and Picnic Tables

Concrete seating and expanded metal table

Picnic area (wood table top) at Inspiration Point—Palisades Park, Santa Monica, WRT

Seating along the trail and at gathering areas are designed to allow for wheelchair users to sit shoulder-to-shoulder with ambulatory companions.



3. Preliminary GDP Recommendations Assessment of Park Development Options

Passive Recreation – *provide for the enjoyment of natural open space*

Rail at stair segments as necessary

Observation pier

Existing chain link fence along the golf course

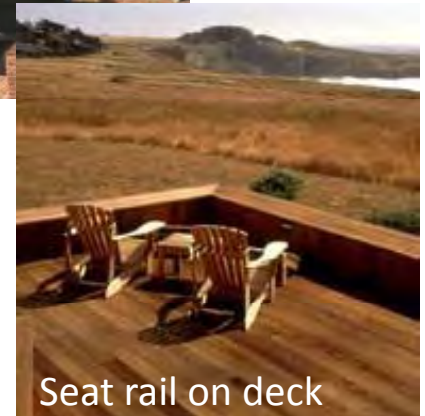
Removable barrier at fixed-wing runway

Seat rail on the Observation Deck

Existing vehicular gate



Barriers



Seat rail on deck



La Jolla Coastwalk, Goldfish Point

3. Preliminary GDP Recommendations Assessment of Park Development Options

Support Facilities – *components to be shared by all users*

On-Street Parking



Torrey Pines Scenic Drive is 40' curb to curb. Currently parallel parking on both sides of the street = approx. 135 cars maximum capacity. Angled parking could only be on one side of the street (so increase on one side would lose spaces on the other side).

New pedestrian path should extend from the end of the sidewalk along the west side of the street to a new pedestrian park entry.

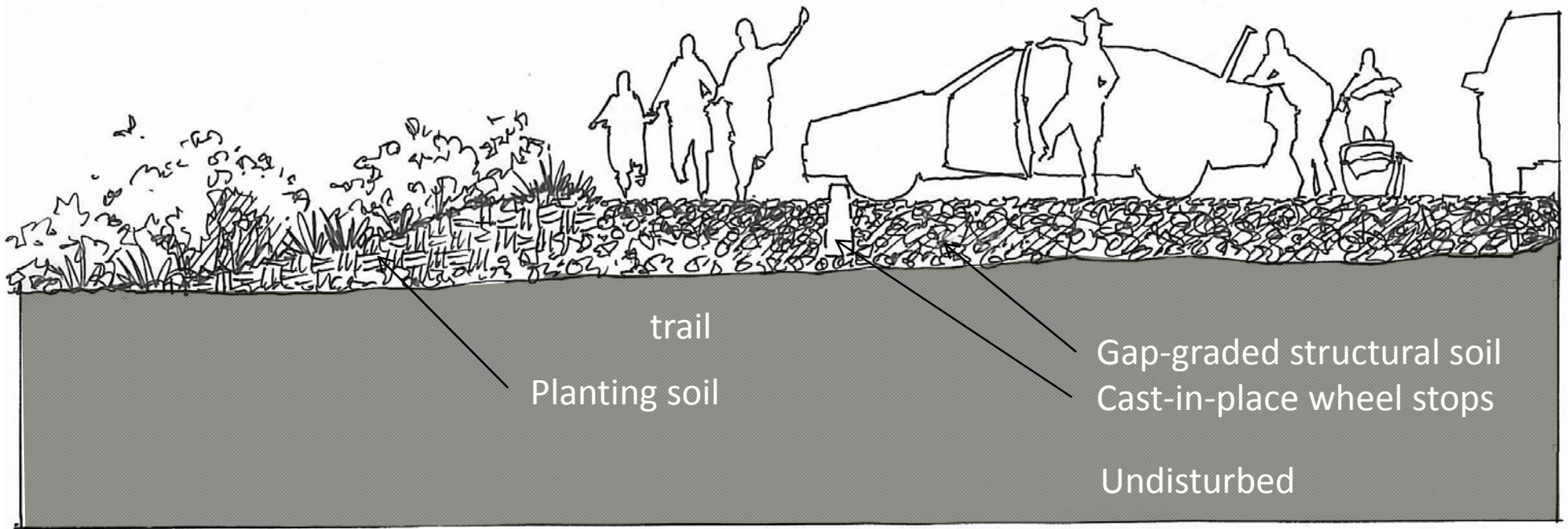


3. Preliminary GDP Recommendations Assessment of Park Development Options

Support Facilities – *components to be shared by all users*

Vehicular Pavement, Parking and Trails

All trails on the bluff are designed to invite the safe enjoyment for all (ADA compliant). A minimum of one van accessible parking space will be designated as close as possible to the path of travel to the park features, including the airfield, observation decks and picnic areas.



3. Preliminary GDP Recommendations Assessment of Park Development Options

Support Facilities – *components to be shared by all users*

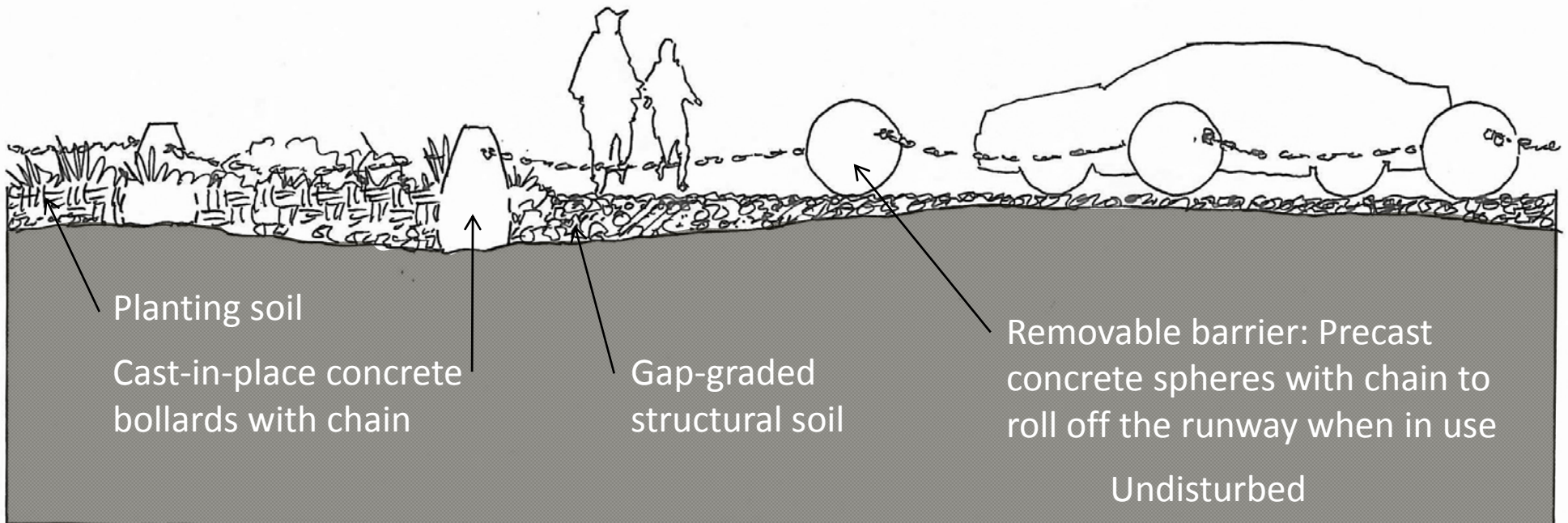
Vehicle Barriers and Site Furnishings



Bicycle racks



Receptacles for trash and recyclable materials with lids to minimize bird access.



Planting soil

Cast-in-place concrete bollards with chain

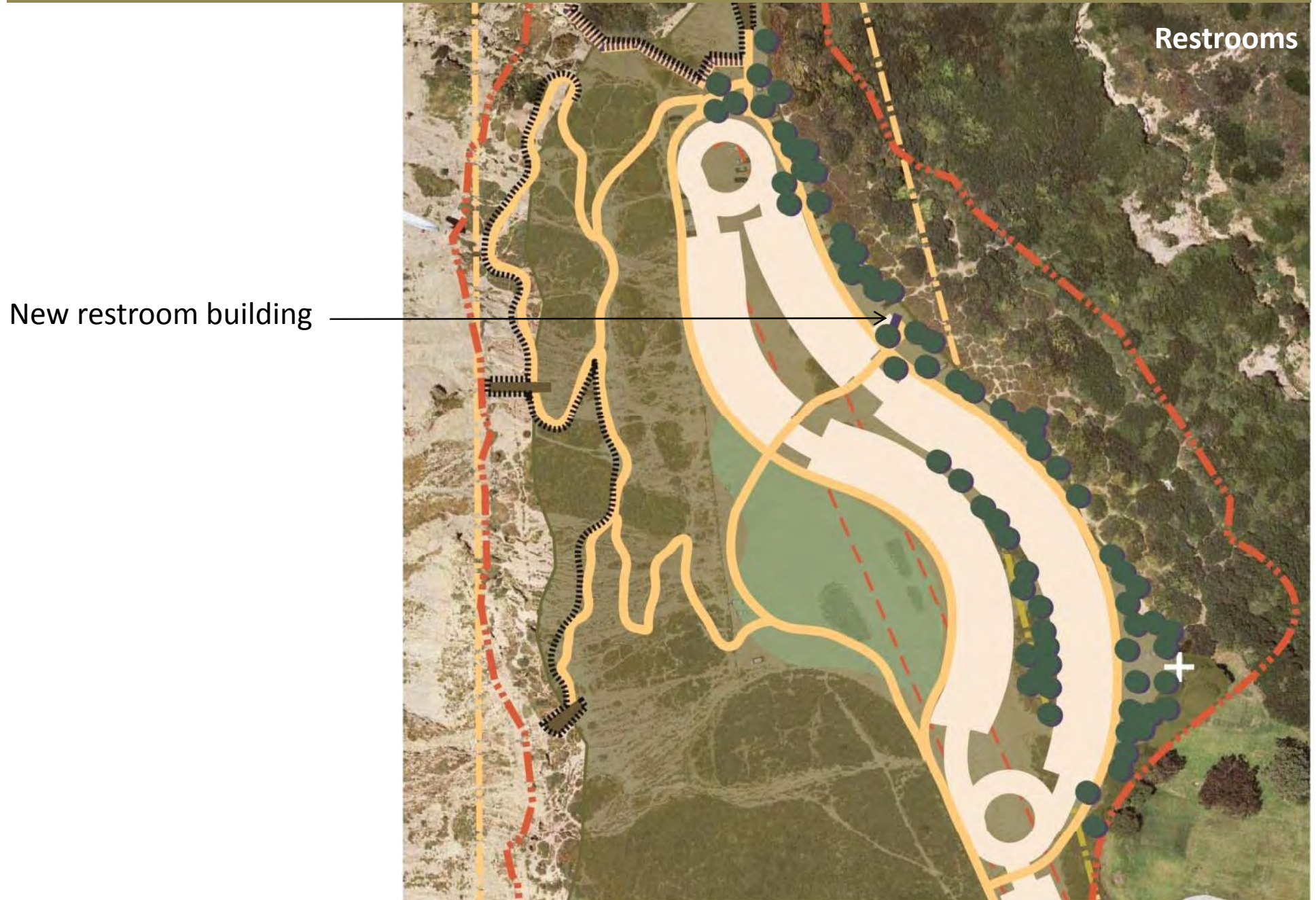
Gap-graded structural soil

Removable barrier: Precast concrete spheres with chain to roll off the runway when in use

Undisturbed

3. Preliminary GDP Recommendations Assessment of Park Development Options

Support Facilities – *components to be shared by all users*



3. Preliminary GDP Recommendations Assessment of Park Development Options

Support Facilities – components to be shared by all users

Restrooms

