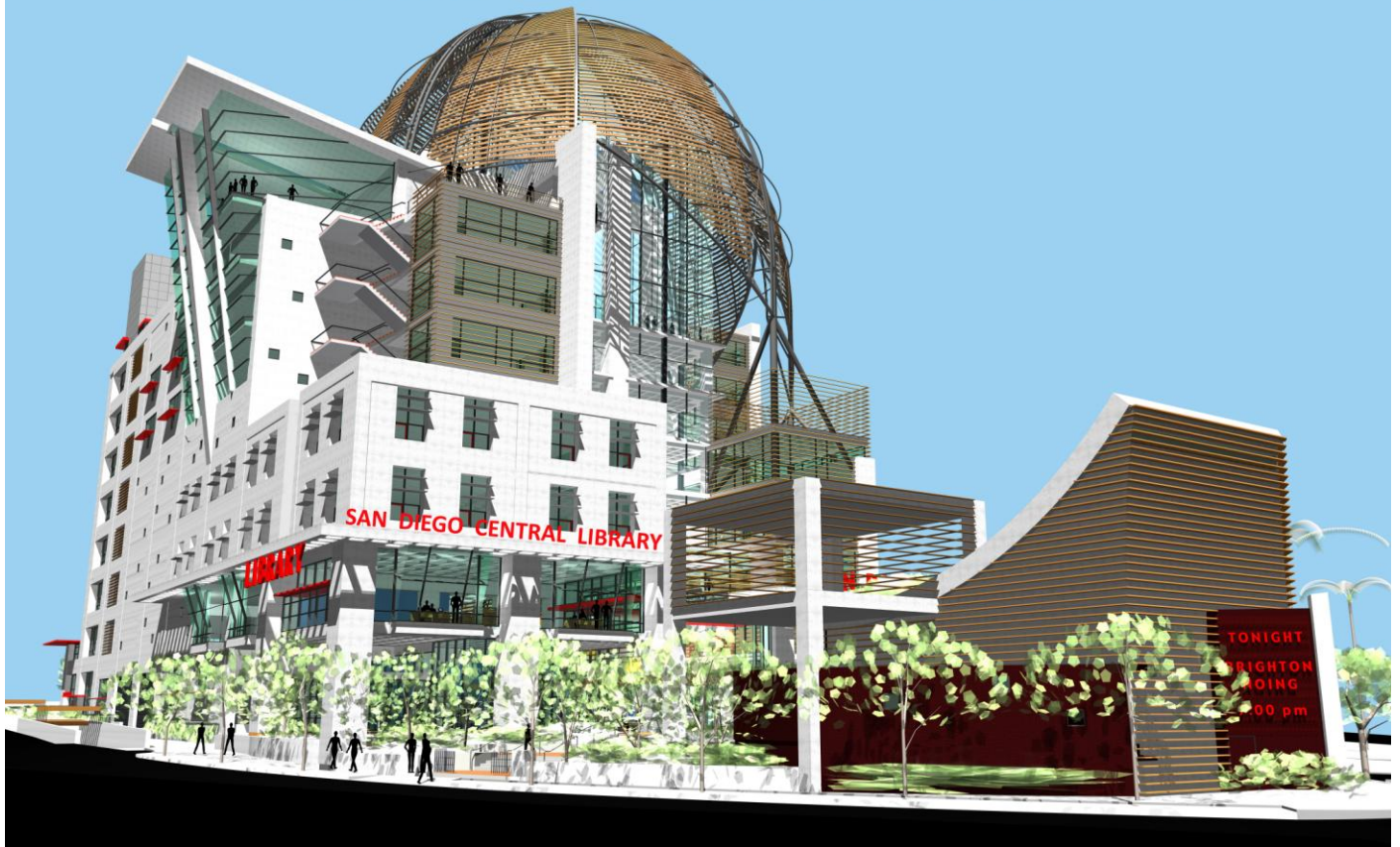


# SAN DIEGO NEW CENTRAL LIBRARY



## Facts About

# The New Central Library

**Construction Began**  
August 2010

**Cost**  
\$185 million

**Construction Scheduled to be Complete**  
Summer 2013

### Special Library Features

- Outdoor Library Plaza and café
- 350-seat auditorium
- Three-story domed reading room
- 400-seat, west-facing multi-purpose room
- 3,797-square-foot teen center
- 9,141-square-foot children's library
- Technology Center
- 163 square foot Coffee Bar

### Location

330 Park Blvd, San Diego, CA 92101  
(Downtown - East Village, Park Boulevard at 11th Avenue, near Petco Park.)

### Additional Unique Feature

Co-located Charter High School for approximately 500 students on 6<sup>th</sup> and 7<sup>th</sup> floor of building

### Total Building Size

497,652 square feet (nine stories including a charter school on two levels, two levels of parking, an auditorium and a café)

### Parking Spaces

500 (250 on-site, 250 across the street)

### Architect

Rob Wellington Quigley, FAIA  
Tucker Sadler & Associates

Square footage is based on actual architectural plans.



THE CITY OF SAN DIEGO



<b>FEATURES AND SERVICES</b>	<b>CURRENT CENTRAL LIBRARY</b>	<b>NEW CENTRAL LIBRARY</b>
Library Space	144,524 square feet, three stories	294,673 square feet, nine stories
Site	30,000 square feet	69,820 square feet
Parking	None	250 spaces (plus 250 across street)
Collection Size		
Total (volumes)	780,000	1,250,598
Children's (volumes)	42,749	71,965
Public Computers	84	407*
Special Areas		
Children's Library	3,200 square feet	9,141 square feet
Teen Center	1,240 square feet	3,797 square feet
Homework Center	None	926 square feet
Readers Seats	409	1,200
Meeting Spaces		
Auditorium Capacity	180	350
Number of Meeting Rooms	2	6
Number of Study Rooms	None	22**
Special Services		
Literacy Services	None - Off-site at branch library	4,907 square feet onsite
Gallery and Exhibit Space	Minimal Hallway Space	3,010 square feet
Special Event Space	None	3,605 square feet

\* Broadband wireless Internet within the Central Library will allow additional public connections for people to use their personal laptops and other devices.

\*\* The total does not include specialized study rooms located in the Teen Space, the I CAN Center and READ/SD.

For more information about the  
City of San Diego Public Library and future library projects,  
visit the City's Web site:  
[sandiegolibrary.org](http://sandiegolibrary.org)  
and click on *About the Library*.

Revised 6/16/11