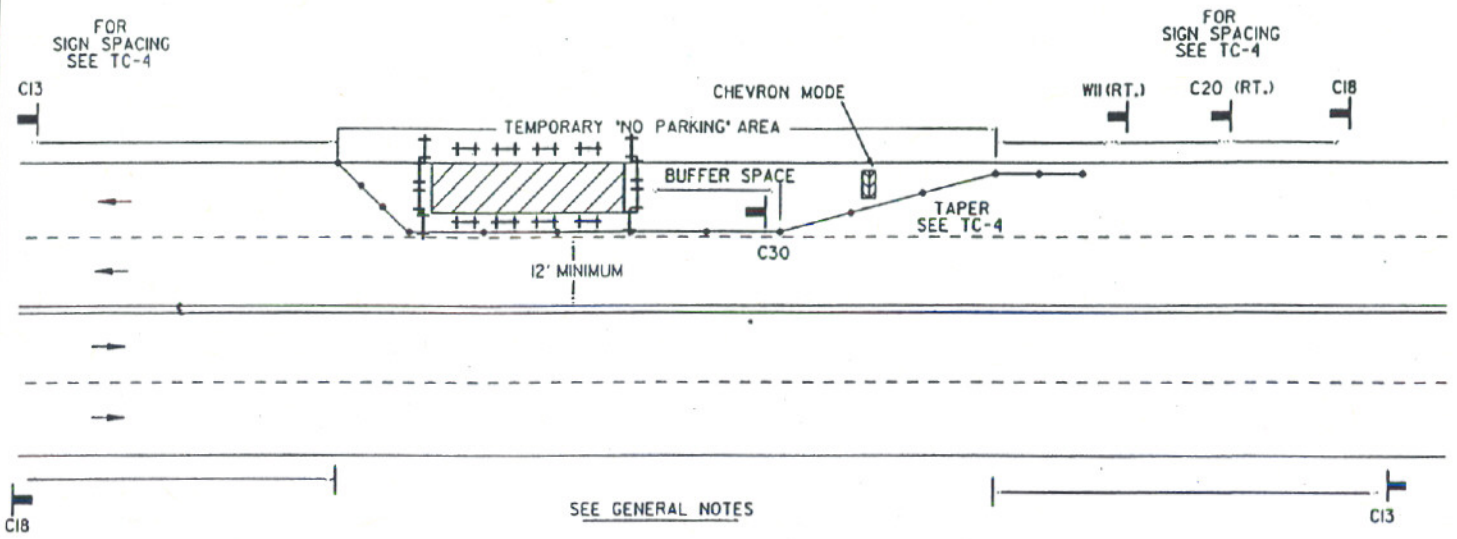


DRAWING NUMBER TC-10

**SIDE OF ROAD WORK AREA**  
 MULTILANE TRAFFIC CONTROL WITH CENTERLINE  
 RIGHT TRAFFIC LANE CLOSURE - ONE LANE

APPENDIX 'A'  
 SAN DIEGO REGIONAL STANDARD



**LEGEND**

- CONE
- ++ BARRICADE
- FLAGGER
- SIGN
- FLASHING ARROW SIGN
- WORK AREA
- TRAFFIC DIRECTION

AGENCY ENGINEER'S COMMENTS

\_\_\_\_\_  
 \_\_\_\_\_  
 \_\_\_\_\_  
 \_\_\_\_\_  
 \_\_\_\_\_

POSTED SPEED LIMIT	APPROACH SPEED	TAPER LENGTH	SPACING OF CONES	SIGN SPACING

SEE TC-4 FOR SIGN, CONE SPACING AND TAPER LENGTH

GENERAL NOTES

For hours of darkness, change cones to vertical barricades with steady burn lights.

This plan DOES NOT apply at signalized or multi-way stop intersections. Consult the local jurisdiction when preparing Traffic Control Plans near these intersections.

This plan MAY NOT apply when the work areas affect bike lanes, sidewalks, pedestrian access, and curved or narrow roadways. Consult the approving agency when preparing the Traffic Control Plan for these areas.

Nothing contained on this drawing shall prevent local jurisdictions from modifying, changing, or adopting new specifications deemed necessary. Criteria for position, location, and use of Traffic Control Devices is solely for the purpose of guidance to assist in the set up of the Traffic Control Plans.

TC-5 is required for all Traffic Control Plans.

SUBMITTED BY:  
 NAME \_\_\_\_\_  
 COMPANY \_\_\_\_\_  
 ADDRESS \_\_\_\_\_  
 PHONE \_\_\_\_\_

Revision	By	Approved	Date
DRAWING	BY	APPROVED	DATE
ORIG.	MAJ	MAJ	1-10-84
	MAJ	MAJ	1-10-84
	MAJ	MAJ	1-10-84

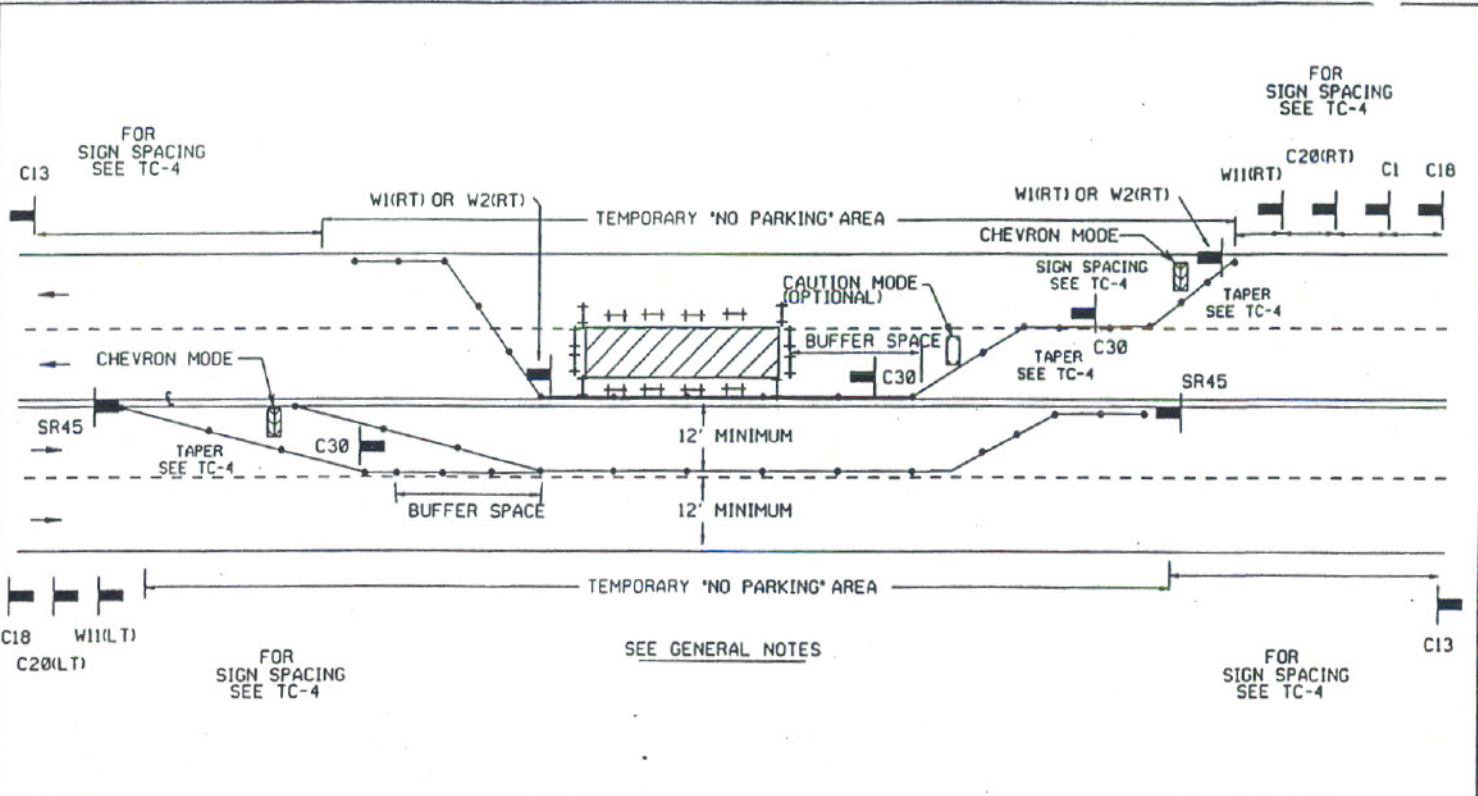
574

Revision	By	Approved	Date
DRAWING	MM		4-91
ORIG.	MM		8-91
	MM		10-91
	MM		4-25-95
	MM		9-15-95

SIDE OF ROAD WORK AREA  
 MULTILANE TRAFFIC CONTROL WITH CENTERLINE  
 RIGHT TRAFFIC LANE CLOSURE - TWO LANES

APPENDIX "A"  
 SAN DIEGO REGIONAL STANDARD

DRAWING NUMBER  
 TC-11



**LEGEND**

• CONE    ++ BARRICADE    [ ] FLAGGER    [ ] SIGN    [ ] FLASHING ARROW SIGN    [ ] WORK AREA    → TRAFFIC DIRECTION

AGENCY ENGINEER'S COMMENTS

---



---



---



---



---

POSTED SPEED LIMIT	APPROACH SPEED	TAPER LENGTH	SPACING OF CONES	SIGN SPACING

SEE TC-4 FOR SIGN, CONE SPACING AND TAPER LENGTH

**GENERAL NOTES**

For hours of darkness, change cones to vertical barricades with steady burn lights.

This plan DOES NOT apply at signalized or multi-way stop intersections. Consult the local jurisdiction when preparing Traffic Control Plans near these intersections.

This plan MAY NOT apply when the work areas affect bike lanes, sidewalks, pedestrian access, and curved or narrow roadways. Consult the approving agency when preparing the Traffic Control Plan for these areas.

Nothing contained on this drawing shall prevent local jurisdictions from modifying changing, or adopting new specifications deemed necessary. Criteria for position, location, and use of Traffic Control Devices is solely for the purpose of guidance to assist in the set up of the Traffic Control Plans.

TC-5 is required for all Traffic Control Plans.

SUBMITTED BY:

NAME \_\_\_\_\_

COMPANY \_\_\_\_\_

ADDRESS \_\_\_\_\_

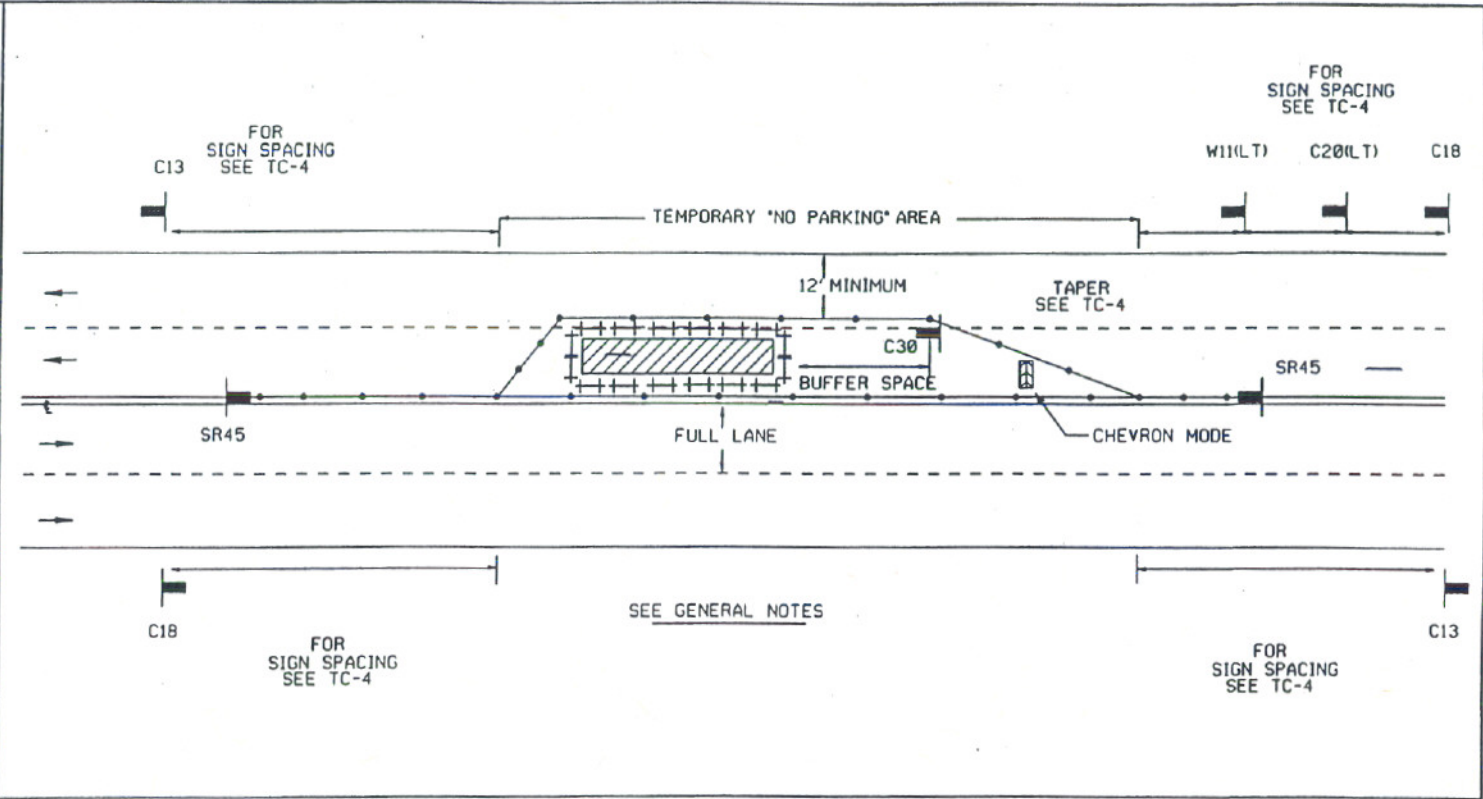
PHONE \_\_\_\_\_

575

DRAWING NUMBER TC-12

**CENTER OF ROAD WORK AREA**  
 MULTILANE TRAFFIC CONTROL WITH CENTERLINE LEFT TRAFFIC LANE CLOSURE - ONE LANE

APPENDIX "A"  
 SAN DIEGO REGIONAL STANDARD



**LEGEND**

• CONE    ++ BARRICADE    [ ] FLAGGER    [ ] SIGN    [ ] FLASHING ARROW SIGN    [ ] WORK AREA    ⇄ TRAFFIC DIRECTION

AGENCY ENGINEER'S COMMENTS

---



---



---



---

POSTED SPEED LIMIT	APPROACH SPEED	TAPER LENGTH	SPACING OF CONES	SIGN SPACING

SEE TC-4 FOR SIGN, CONE SPACING AND TAPER LENGTH

**GENERAL NOTES**

For hours of darkness, change cones to vertical barricades with steady burn lights.

This plan DOES NOT apply at signalized or multi-way stop intersections. Consult the local jurisdiction when preparing Traffic Control Plans near these intersections.

This plan MAY NOT apply when the work areas affect bike lanes, sidewalks, pedestrian access, and curved or narrow roadways. Consult the approving agency when preparing the Traffic Control Plan for these areas.

Nothing contained on this drawing shall prevent local jurisdictions from modifying, changing, or adopting new specifications deemed necessary. Criteria for position, location, and use of Traffic Control Devices is solely for the purpose of guidance to assist in the set up of the Traffic Control Plans.

TC-5 is required for all Traffic Control Plans.

Revision	By	Approved	Date
DRAWING	MMJ	[Signature]	8-9-11
DRAWING	MMJ	[Signature]	6-28-11
DRAWING	MMJ	[Signature]	4-23-11

SUBMITTED BY:

NAME \_\_\_\_\_

COMPANY \_\_\_\_\_

ADDRESS \_\_\_\_\_

PHONE \_\_\_\_\_

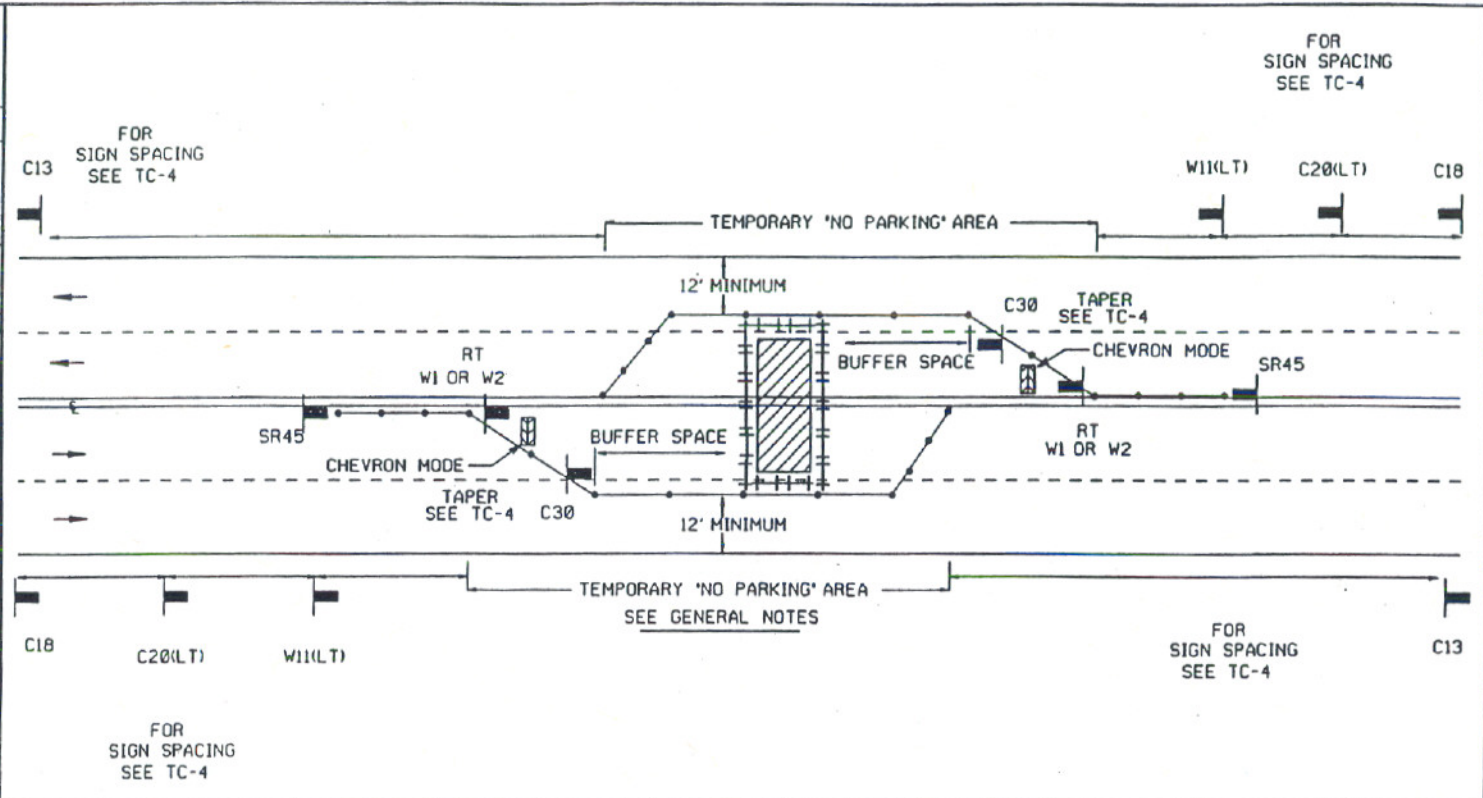
576

Revision	By	Approved	Date
DRAWING	DW		7-28
ORIG.	FHM		8-31
	WJ		10-8-31
	DB		6-1-34
			5-22-35

APPENDIX "A"  
SAN DIEGO REGIONAL STANDARD

**CENTER OF ROAD WORK AREA**  
MULTILANE TRAFFIC CONTROL WITH CENTERLINE  
LEFT TRAFFIC LANE CLOSURE - TWO LANES

DRAWING NUMBER  
**TC-13**



**LEGEND**

• CONE    †† BARRICADE    □ FLAGGER    ▬ SIGN    ⚡ FLASHING ARROW SIGN    ▨ WORK AREA    ← TRAFFIC DIRECTION

AGENCY ENGINEER'S COMMENTS

---



---



---



---

POSTED SPEED LIMIT	APPROACH SPEED	TAPER LENGTH	SPACING OF CONES	SIGN SPACING

SEE TC-4 FOR SIGN, CONE SPACING AND TAPER LENGTH

**AGENCY USE**

---



---



---



---

**APPLICANT USE**

SUBMITTED BY:

NAME \_\_\_\_\_

COMPANY \_\_\_\_\_

ADDRESS \_\_\_\_\_

PHONE \_\_\_\_\_

**GENERAL NOTES**

For hours of darkness, change cones to vertical barricades with steady burn lights.

This plan DOES NOT apply at signalized or multi-way stop intersections. Consult the local jurisdiction when preparing Traffic Control Plans near these intersections.

This plan MAY NOT apply when the work areas affect bike lanes, sidewalks, pedestrian access, and curved or narrow roadways. Consult the approving agency when preparing the Traffic Control Plan for these areas.

Nothing contained on this drawing shall prevent local jurisdictions from modifying, changing, or adopting new specifications deemed necessary. Criteria for position, location, and use of Traffic Control Devices is solely for the purpose of guidance to assist in the set up of the Traffic Control Plans.

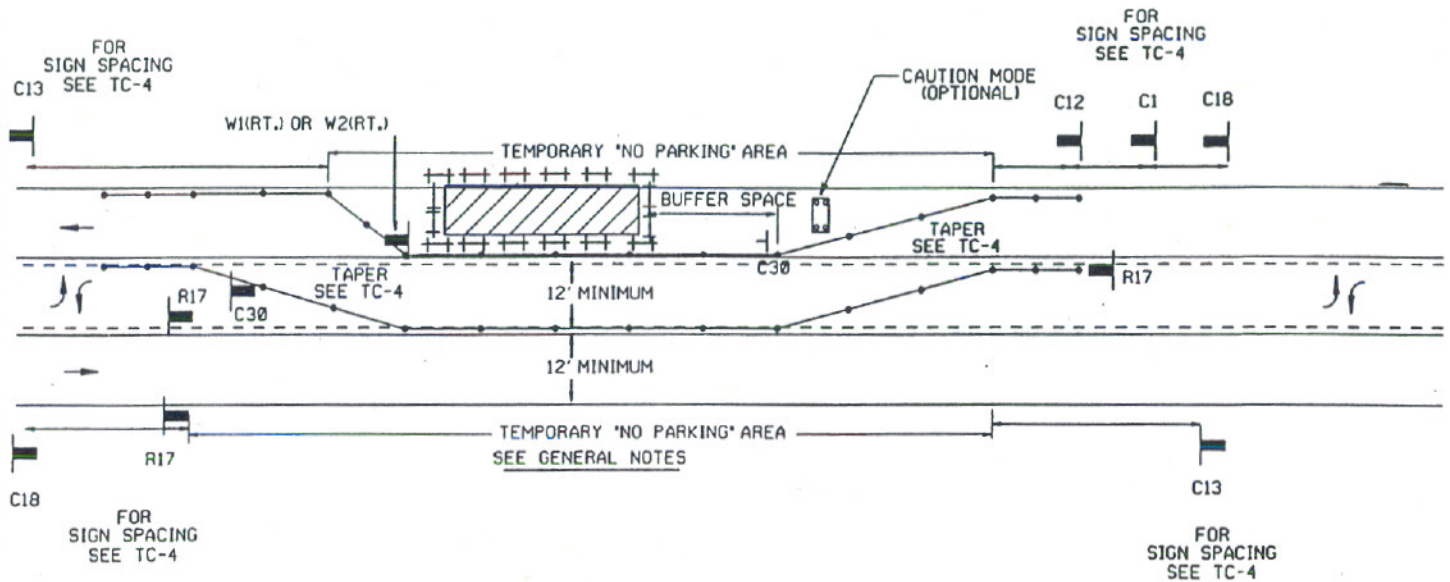
TC-5 is required for all Traffic Control Plans.

577

DRAWING NUMBER TC-14

SIDE OF ROAD WORK AREA  
 MULTILANE TRAFFIC CONTROL WITH TWO WAY LEFT TURN  
 RIGHT LANE TRAFFIC CLOSURE - ONE LANE

APPENDIX "A"  
 SAN DIEGO REGIONAL STANDARD



**LEGEND**

- CONE
- ++ BARRICADE
- FLAGGER
- SIGN
- FLASHING ARROW SIGN
- WORK AREA
- TRAFFIC DIRECTION

AGENCY ENGINEER'S COMMENTS

\_\_\_\_\_  
 \_\_\_\_\_  
 \_\_\_\_\_  
 \_\_\_\_\_  
 \_\_\_\_\_

POSTED SPEED LIMIT	APPROACH SPEED	TAPER LENGTH	SPACING OF CONES	SIGN SPACING

SEE TC-4 FOR SIGN, CONE SPACING AND TAPER LENGTH

GENERAL NOTES

For hours of darkness, change cones to vertical barricades with steady burn lights.

This plan DOES NOT apply at signalized or multi-way stop intersections. Consult the local jurisdiction when preparing Traffic Control Plans near these intersections.

This plan MAY NOT apply when the work areas effect bike lanes, sidewalks, pedestrian access, and curved or narrow roadways. Consult the approving agency when preparing the Traffic Control Plan for these areas.

Nothing contained on this drawing shall prevent local jurisdictions from modifying changing, or adopting new specifications deemed necessary. Criteria for position, location, and use of Traffic Control Devices is solely for the purpose of guidance to assist in the set up of the Traffic Control Plans.

TC-5 is required for all Traffic Control Plans.

SUBMITTED BY:  
 NAME \_\_\_\_\_  
 COMPANY \_\_\_\_\_  
 ADDRESS \_\_\_\_\_  
 PHONE \_\_\_\_\_

Revision	By	Approved	Date
ORIG.	WAL	OCB	9-15-95

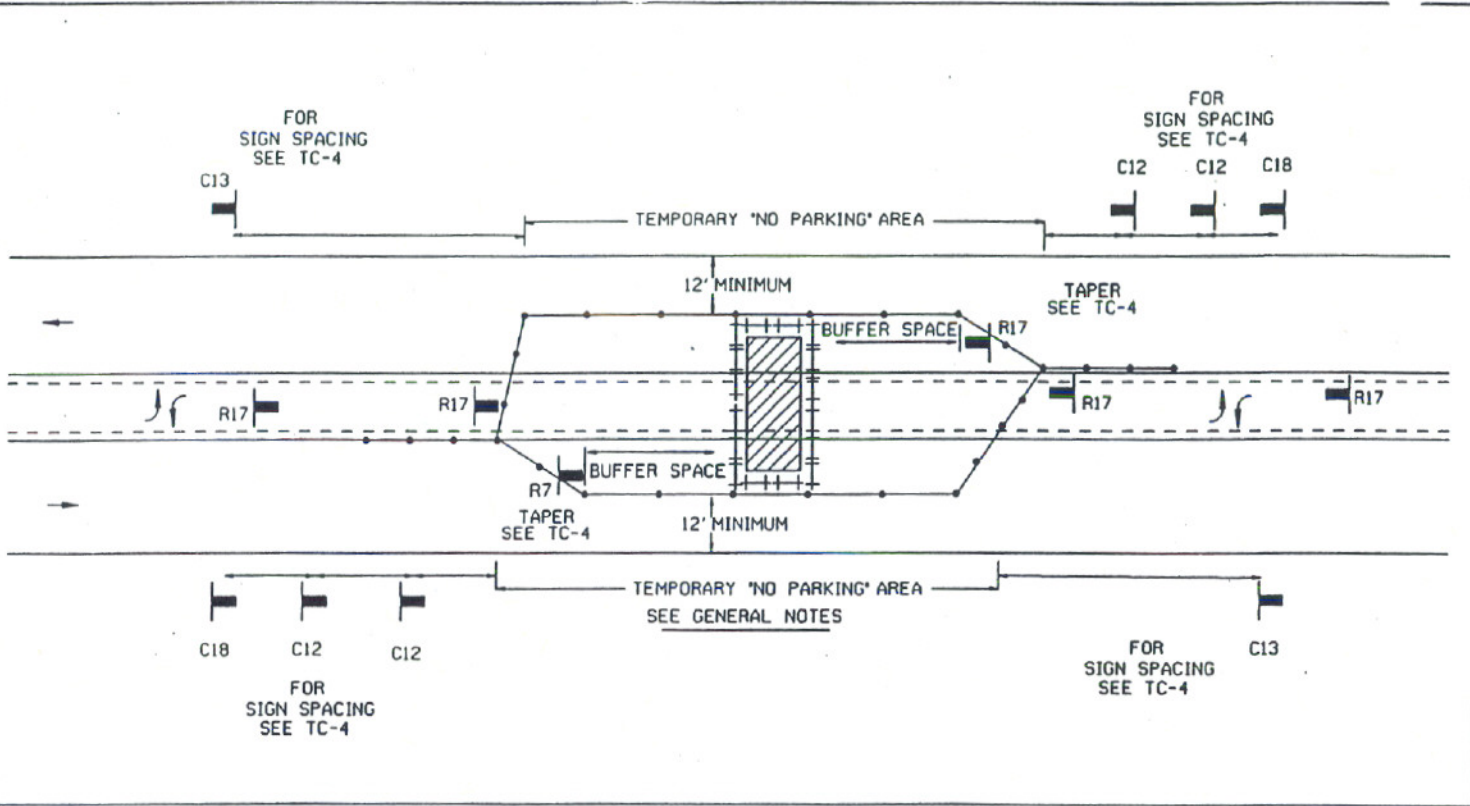
578

Revision	By	Approved	Date
DRAWING	DMV		6-21-91
ORIG.	WAV		10-27-91
	WAV		4-23-93
	008		9-15-93

APPENDIX "A"  
SAN DIEGO REGIONAL STANDARD

**CENTER OF ROAD WORK AREA**  
MULTILANE TRAFFIC CONTROL WITH CENTERLINE  
LEFT LANE CLOSURE - ONE LANE

DRAWING NUMBER  
**TC-15**



**LEGEND**

• CONE    ++ BARRICADE    [ ] FLAGGER    [ ] SIGN    [ ] FLASHING ARROW SIGN    [ ] WORK AREA    ← TRAFFIC DIRECTION

AGENCY ENGINEER'S COMMENTS

\_\_\_\_\_

\_\_\_\_\_

\_\_\_\_\_

\_\_\_\_\_

AGENCY USE

POSTED SPEED LIMIT	APPROACH SPEED	TAPER LENGTH	SPACING OF CONES	SIGN SPACING

SEE TC-4 FOR SIGN, CONE SPACING AND TAPER LENGTH

SUBMITTED BY:

NAME \_\_\_\_\_

COMPANY \_\_\_\_\_

ADDRESS \_\_\_\_\_

PHONE \_\_\_\_\_

APPLICANT USE

**GENERAL NOTES**

For hours of darkness, change cones to vertical barricades with steady burn lights.

This plan DOES NOT apply at signalized or multi-way stop intersections. Consult the local jurisdiction when preparing Traffic Control Plans near these intersections.

This plan MAY NOT apply when the work areas affect bike lanes, sidewalks, pedestrian access, and curved or narrow roadways. Consult the approving agency when preparing the Traffic Control Plan for these areas.

Nothing contained on this drawing shall prevent local jurisdictions from modifying changing, or adopting new specifications deemed necessary. Criteria for position, location, and use of Traffic Control Devices is solely for the purpose of guidance to assist in the set up of the Traffic Control Plans.

TC-5 is required for all Traffic Control Plans.

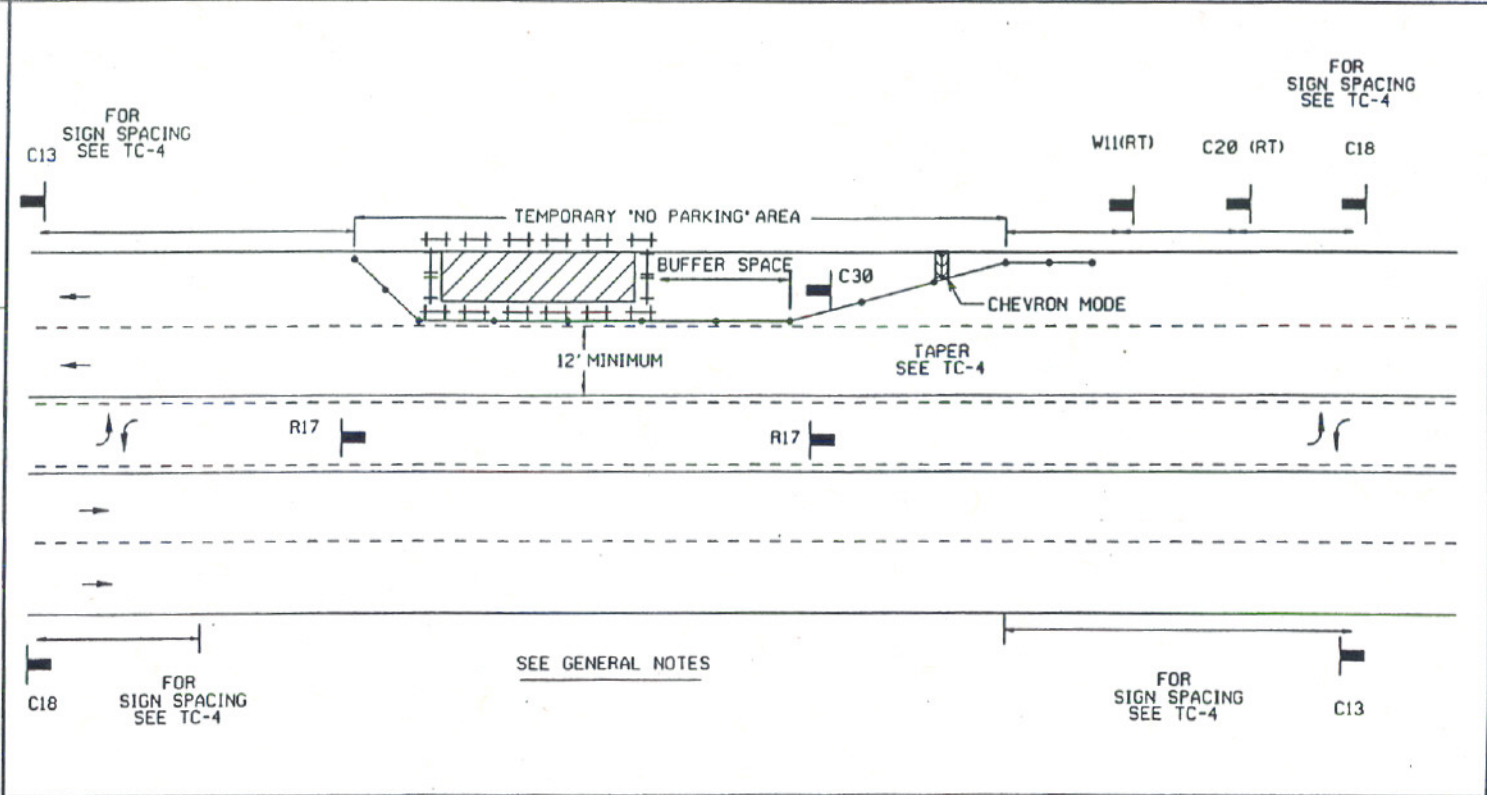
579

DRAWING NUMBER TC-16

MULTILANE TRAFFIC CONTROL WITH TWO WAY LEFT TURN RIGHT TRAFFIC LANE CLOSURE - ONE LANE

SAN DIEGO REGIONAL STANDARD

APPENDIX "A"



LEGEND

- CONE
- ++ BARRICADE
- FLAGGER
- SIGN
- FLASHING ARROW SIGN
- WORK AREA
- TRAFFIC DIRECTION

AGENCY ENGINEER'S COMMENTS

\_\_\_\_\_  
 \_\_\_\_\_  
 \_\_\_\_\_  
 \_\_\_\_\_  
 \_\_\_\_\_

POSTED SPEED LIMIT	APPROACH SPEED	TAPER LENGTH	SPACING OF CONES	SIGN SPACING

GENERAL NOTES

For hours of darkness, change cones to vertical barricades with steady burn lights.

This plan DOES NOT apply at signalized or multi-way stop intersections. Consult the local jurisdiction when preparing Traffic Control Plans near these intersections.

This plan MAY NOT apply when the work areas affect bike lanes, sidewalks, pedestrian access, and curved or narrow roadways. Consult the approving agency when preparing the Traffic Control Plan for these areas.

Nothing contained on this drawing shall prevent local jurisdictions from modifying, changing, or adopting new specifications deemed necessary. Criteria for position, location, and use of Traffic Control Devices is solely for the purpose of guidance to assist in the set up of the Traffic Control Plans.

TC-5 is required for all Traffic Control Plans.

SEE TC-4 FOR SIGN, CONE SPACING AND TAPER LENGTH

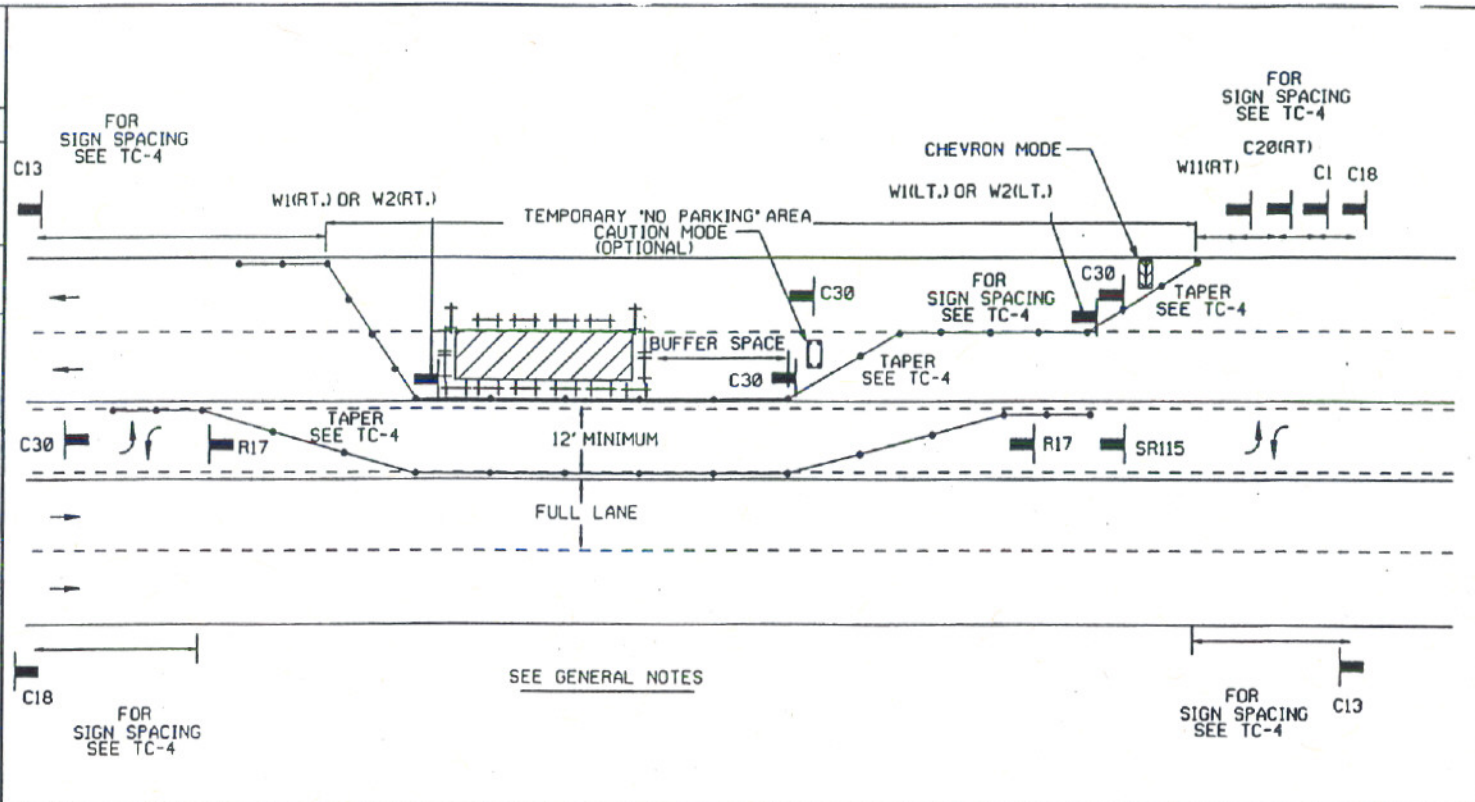
SUBMITTED BY: NAME \_\_\_\_\_  
 COMPANY \_\_\_\_\_  
 ADDRESS \_\_\_\_\_  
 PHONE \_\_\_\_\_

Revision	By	Approved	Date
ORIG.	DMV	DMV	4-91
1	WJ	WJ	10-9-91
2	WJ	WJ	5-23-94
3	WJ	WJ	5-23-95
4	WJ	WJ	9-15-95

580

Revision	By	Approved	Date
DRAWING	DMV	FM	4-91
ORIG.	WAJ	DOB	12-91
			4-92
			9-15-93

APPENDIX "A"  
 SAN DIEGO REGIONAL STANDARD  
**CENTER OF ROAD WORK AREA**  
 MULTILANE TRAFFIC CONTROL WITH TWO WAY LEFT TURN  
 RIGHT TRAFFIC LANE CLOSURE - TWO LANES



SEE GENERAL NOTES

**LEGEND**

- CONE
- ++ BARRICADE
- FLAGGER
- SIGN
- FLASHING ARROW SIGN
- WORK AREA
- TRAFFIC DIRECTION

AGENCY ENGINEER'S COMMENTS

\_\_\_\_\_

\_\_\_\_\_

\_\_\_\_\_

\_\_\_\_\_

\_\_\_\_\_

\_\_\_\_\_

POSTED SPEED LIMIT	APPROACH SPEED	TAPER LENGTH	SPACING OF CONES	SIGN SPACING

SEE TC-4 FOR SIGN, CONE SPACING AND TAPER LENGTH

GENERAL NOTES

- For hours of darkness, change cones to vertical barricades with steady burn lights.
- This plan DOES NOT apply at signalized or multi-way stop intersections. Consult the local jurisdiction when preparing Traffic Control Plans near these intersections.
- This plan MAY NOT apply when the work areas affect bike lanes, sidewalks, pedestrian access, and curved or narrow roadways. Consult the approving agency when preparing the Traffic Control Plan for these areas.
- Nothing contained on this drawing shall prevent local jurisdictions from modifying, changing, or adopting new specifications deemed necessary. Criteria for position, location, and use of Traffic Control Devices is solely for the purpose of guidance to assist in the set up of the Traffic Control Plans.
- TC-5 is required for all Traffic Control Plans.

SUBMITTED BY:

NAME \_\_\_\_\_

COMPANY \_\_\_\_\_

ADDRESS \_\_\_\_\_

PHONE \_\_\_\_\_

AGENCY USE

APPLICANT USE

DRAWING NUMBER TC-17

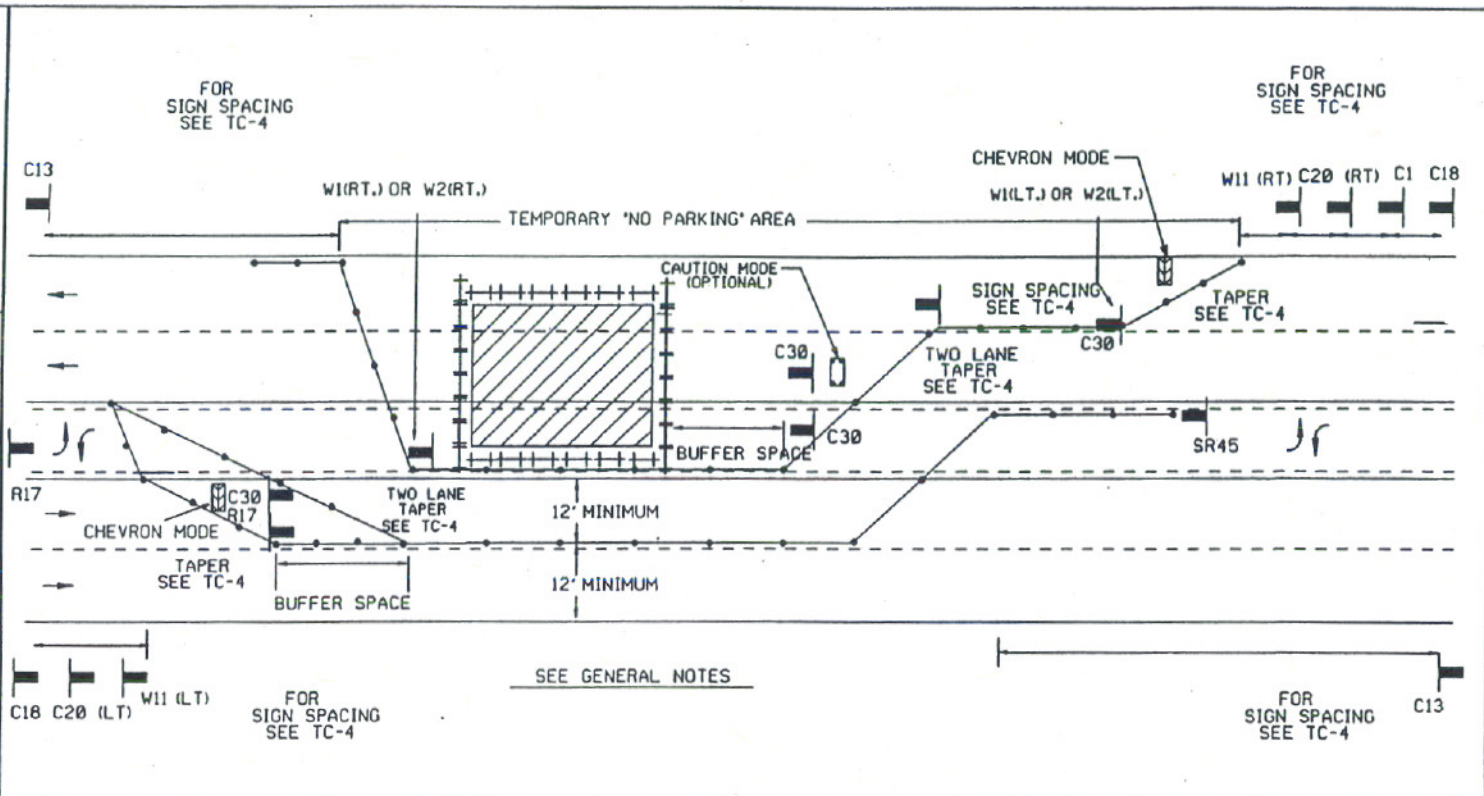
581



DRAWING NUMBER TC-18

SIDE OF ROAD WORK AREA  
 MULTILANE TRAFFIC CONTROL WITH TWO WAY LEFT TURN  
 RIGHT TRAFFIC LANE CLOSURE - THREE LANES

APPENDIX 'A'  
 SAN DIEGO REGIONAL STANDARD



SEE GENERAL NOTES

**LEGEND**

- CONE
- ⊕ BARRICADE
- ▣ FLAGGER
- ▣ SIGN
- ◻ FLASHING ARROW SIGN
- ▨ WORK AREA
- TRAFFIC DIRECTION

AGENCY ENGINEER'S COMMENTS

AGENCY USE

---



---



---



---



---

POSTED SPEED LIMIT	APPROACH SPEED	TAPER LENGTH	SPACING OF CONES	SIGN SPACING

SEE TC-4 FOR SIGN, CONE SPACING AND TAPER LENGTH

GENERAL NOTES

For hours of darkness, change cones to vertical barricades with steady burn lights.

This plan DOES NOT apply at signalized or multi-way stop intersections. Consult the local jurisdiction when preparing Traffic Control Plans near these intersections.

This plan MAY NOT apply when the work areas affect bike lanes, sidewalks, pedestrian access, and curved or narrow roadways. Consult the approving agency when preparing the Traffic Control Plan for these areas.

Nothing contained on this drawing shall prevent local jurisdictions from modifying changing, or adopting new specifications deemed necessary. Criteria for position, location, and use of Traffic Control Devices is solely for the purpose of guidance to assist in the set up of the Traffic Control Plans.

TC-5 is required for all Traffic Control Plans.

**SUBMITTED BY:**

NAME \_\_\_\_\_

COMPANY \_\_\_\_\_

ADDRESS \_\_\_\_\_

PHONE \_\_\_\_\_

APPLICANT USE

Revision	By	Approved	Date
DRAWING	EM		4-91
ORIG.	EM		10-91
	MAJ		1-92
	MAJ		7-92
	MAJ		9-92
	MAJ		1-93

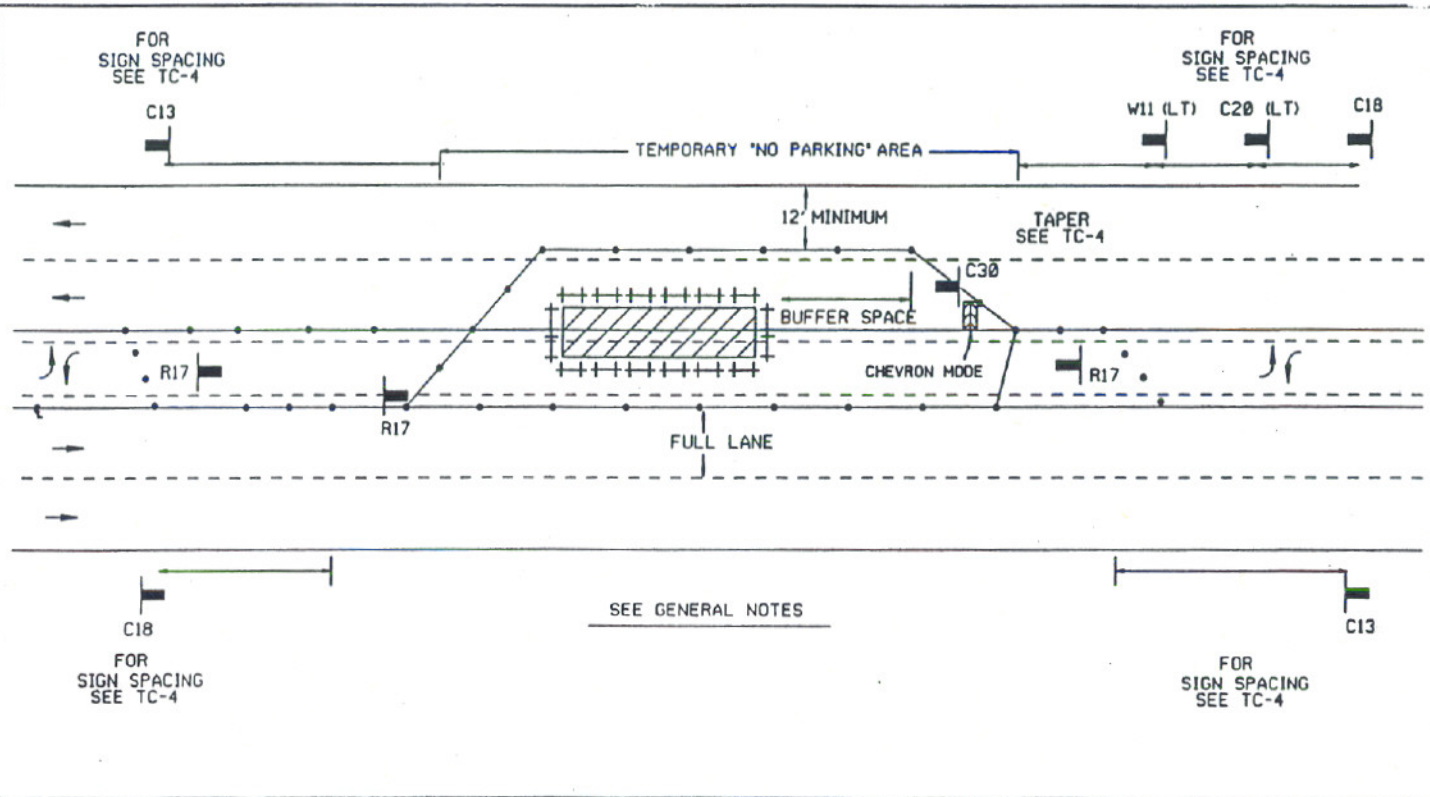
582

Revision	By	Approved	Date
DRAWING	DM		7-81
ORIG.	DM		8-81
	DM		9-15-95
	DM		10-21-95
	DM		12-21-95

APPENDIX 'A'  
SAN DIEGO REGIONAL STANDARD

**CENTER OF ROAD WORK AREA**  
MULTILANE TRAFFIC CONTROL WITH TWO WAY LEFT TURN  
LEFT TRAFFIC LANE CLOSURE - TWO LANES

DRAWING NUMBER **TC-19**



SEE GENERAL NOTES

**LEGEND**

- CONE
- ⇄ BARRICADE
- ▬ FLAGGER
- ▬ SIGN
- ◻ FLASHING ARROW SIGN
- ▨ WORK AREA
- ⇄ TRAFFIC DIRECTION

AGENCY ENGINEER'S COMMENTS

---

---

---

---

---

---

---

---

AGENCY USE

APPLICANT USE

SUBMITTED BY:

NAME \_\_\_\_\_

COMPANY \_\_\_\_\_

ADDRESS \_\_\_\_\_

PHONE \_\_\_\_\_

POSTED SPEED LIMIT	APPROACH SPEED	TAPER LENGTH	SPACING OF CONES	SIGN SPACING

SEE TC-4 FOR SIGN, CONE SPACING AND TAPER LENGTH

GENERAL NOTES

For hours of darkness, change cones to vertical barricades with steady burn lights.

This plan DOES NOT apply at signalized or multi-way stop intersections. Consult the local jurisdiction when preparing Traffic Control Plans near these intersections.

This plan MAY NOT apply when the work areas affect bike lanes, sidewalks, pedestrian access, and curved or narrow roadways. Consult the approving agency when preparing the Traffic Control Plan for these areas.

Nothing contained on this drawing shall prevent local jurisdictions from modifying changing, or adopting new specifications deemed necessary. Criteria for position, location, and use of Traffic Control Devices is solely for the purpose of guidance to assist in the set up of the Traffic Control Plans.

TC-5 is required for all Traffic Control Plans.

583