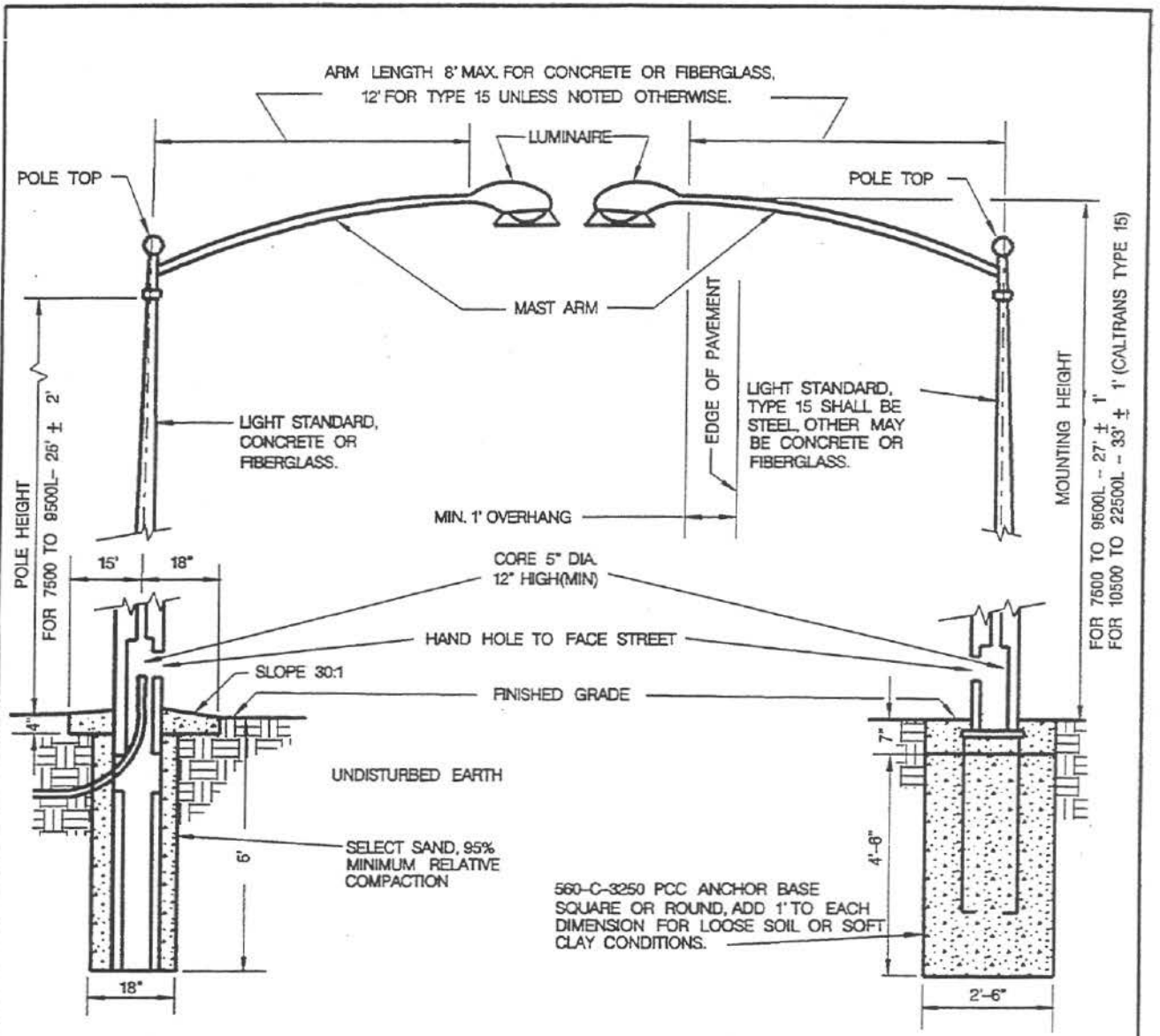


ELECTRICAL SYSTEMS



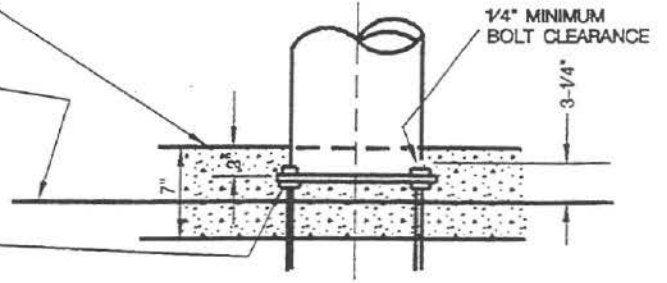
DIRECT BURIAL FOUNDATION

ANCHOR BASE FOUNDATION

FINISHED GRADE FOR CONCRETE STANDARDS.
ANCHOR BOLTS MUST NOT PROTRUDE.

FINISHED GRADE FOR STEEL AND FIBERGLASS STANDARDS.
PROVIDE ANCHOR BOLT NUT COVERS.

ANCHOR BOLTS (4 REQ.) 1" x 36" x 4" HOOK, GALV. USE TWO LEVELING NUTS WITH WASHERS (ALL GALV.) ON EACH BOLT.



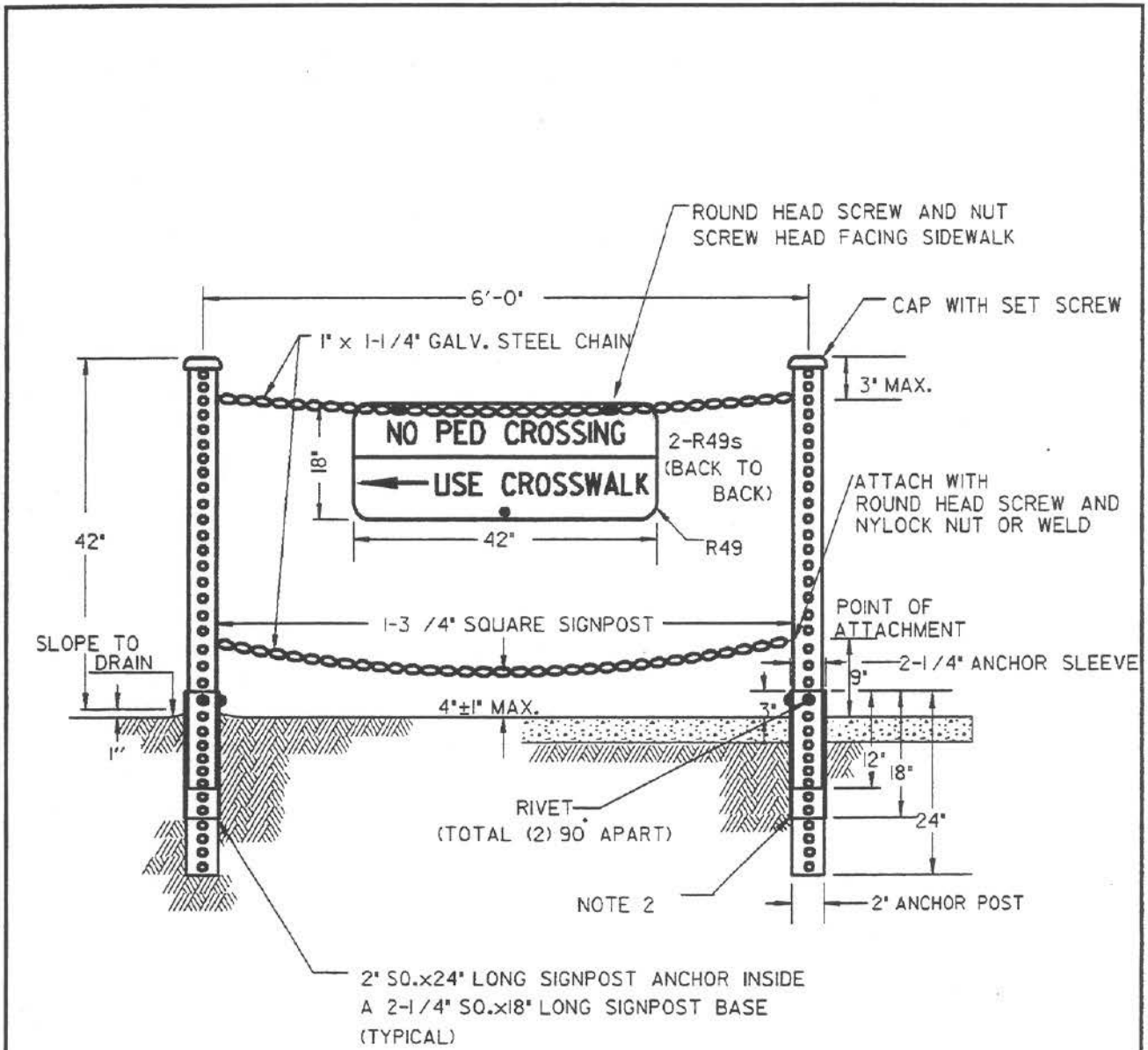
Revision	By	Approved	Date
ORIGINAL		J.P. Casey	6-3-83

CITY OF SAN DIEGO - STANDARD DRAWING

CITY OF SAN DIEGO
STANDARDS COMMITTEE
John J. Ball 2-7-95
COORDINATOR R.C.E. 25902 DATE

STREET LIGHTING STANDARD

DRAWING NUMBER **SDE-101**



NOTES:

1. POSTS TO BE SET 1'-6" BEHIND FACE OF CURB UNLESS OTHERWISE SPECIFIED.
2. IN EXISTING SIDEWALK AREA SET POSTS INTO 4" CORE BORING, PACK WITH GROUT.
3. R49 SIGNS ON ALUMINUM SHEETING CENTERED BETWEEN POSTS.

Revision	By	Approved	Date	CITY OF SAN DIEGO - STANDARD DRAWING	CITY OF SAN DIEGO STANDARDS COMMITTEE <i>John F. Bell</i> 2-7-95 COORDINATOR R.C.E. 25902 DATE
ORIGINAL		J.P. Casey	8-23-88		
PEDESTRIAN BARRICADE				DRAWING NUMBER	SDE-103