

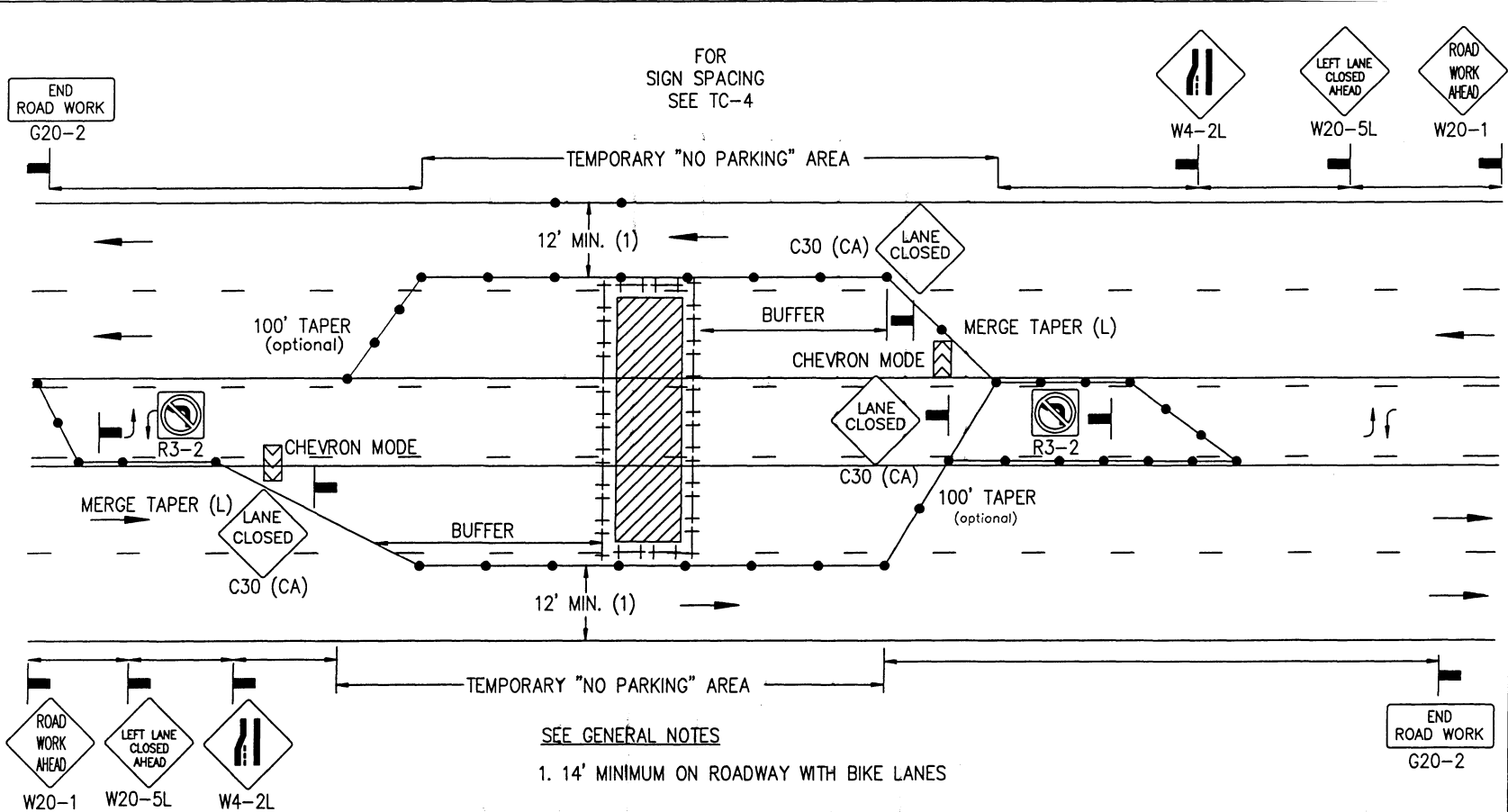
DRAWING NUMBER

TC-20

MULTILANE TRAFFIC CONTROL WITH CENTERLINE LEFT LANE TRAFFIC LANE CLOSURE - THREE LANES

CENTER OF ROAD WORK AREA

APPENDIX "A"
SAN DIEGO REGIONAL STANDARD



LEGEND

- CONE † BARRICADE ■ FLAGGER ▬ SIGN ▨ FLASHING ARROW SIGN ▨ WORK AREA ⇄ TRAFFIC DIRECTION

AGENCY ENGINEER'S COMMENTS

POSTED SPEED LIMIT	APPROACH SPEED	TAPER LENGTH	SPACING OF CONES	SIGN SPACING	BUFFER LENGTH

GENERAL NOTES

See TC-4 for sign spacing, spacing for cones, taper and buffer lengths.
 For hours of darkness, change cones to vertical barricades with steady burn lights.
 This plan DOES NOT apply to signalized or multi-way stop intersections. Consult the local jurisdiction when preparing Traffic Control Plans near these intersections.
 This plan MAY NOT apply when the work areas affect bike lanes, sidewalks, pedestrian access and curved or narrow roadways. Consult the approving agency when preparing the Traffic Control Plan or these areas.
 Nothing contained on this drawing shall prevent local jurisdictions from modifying, changing or adopting new specifications deemed necessary. Criteria for position, location and use of Traffic Control Devices is solely for the purpose of guidance to assist in the set up of the Traffic Control Plans.
 TC-5 is required for all Traffic Control Plans.

SUBMITTED BY:

NAME _____

COMPANY _____

ADDRESS _____

PHONE _____

Revision	By	Approved	Date
ORIGINAL	CRH	<i>[Signature]</i>	4/27/06

AGENCY USE

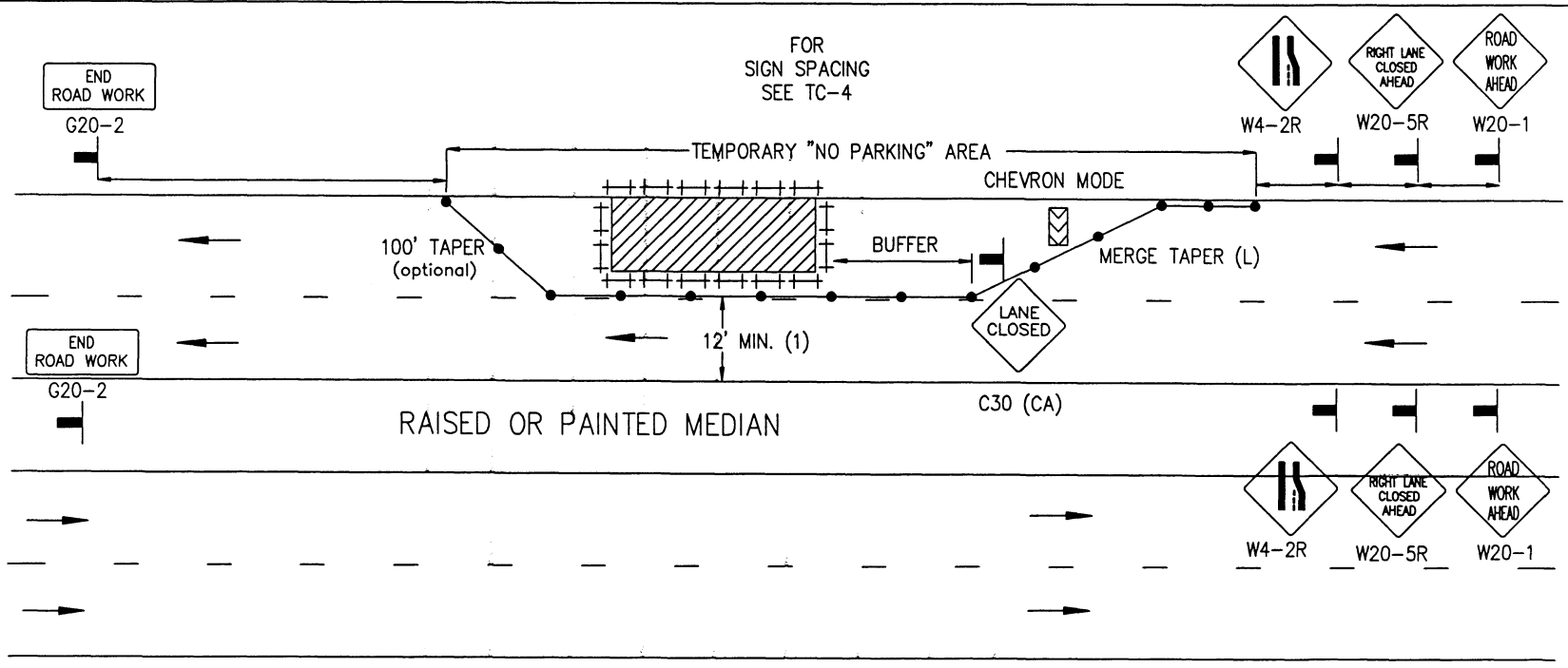
APPLICANT USE

Revision	By	Approved	Date
DRAWING	CHH		4/06
ORIGINAL			4/27/06

APPENDIX "A"
 SAN DIEGO REGIONAL STANDARD
 SIDE OF ROAD WORK AREA
 MULTILANE TRAFFIC CONTROL WITH RAISED MEDIAN
 RIGHT TRAFFIC LANE CLOSURE - ONE LANE

DRAWING NUMBER
 TC-21

FOR SIGN SPACING
SEE TC-4



SEE GENERAL NOTES

- 1. 14' MINIMUM ON ROADWAY WITH BIKE LANES

LEGEND

- CONE ++ BARRICADE ■ FLAGGER — SIGN ▨ FLASHING ARROW SIGN ▨ WORK AREA ⇄ TRAFFIC DIRECTION

AGENCY ENGINEER'S COMMENTS

POSTED SPEED LIMIT	APPROACH SPEED	TAPER LENGTH	SPACING OF CONES	SIGN SPACING	BUFFER LENGTH

AGENCY USE

GENERAL NOTES

- See TC-4 for sign spacing, spacing of cones, taper and buffer lengths.
- For hours of darkness, change cones to vertical barricades with steady burn lights.
- This plan DOES NOT apply to signalized or multi-way stop intersections. Consult the local jurisdiction when preparing Traffic Control Plans near these intersections.
- This plan MAY NOT apply when the work areas affect bike lanes, sidewalks, pedestrian access and curved or narrow roadways. Consult the approving agency when preparing the Traffic Control Plan or these areas.
- Nothing contained on this drawing shall prevent local jurisdictions from modifying, changing or adopting new specifications deemed necessary. Criteria for position, location and use of Traffic Control Devices is solely for the purpose of guidance to assist in the set up of the Traffic Control Plans.
- TC-5 is required for all Traffic Control Plans.

APPLICANT USE

SUBMITTED BY:

NAME _____

COMPANY _____

ADDRESS _____

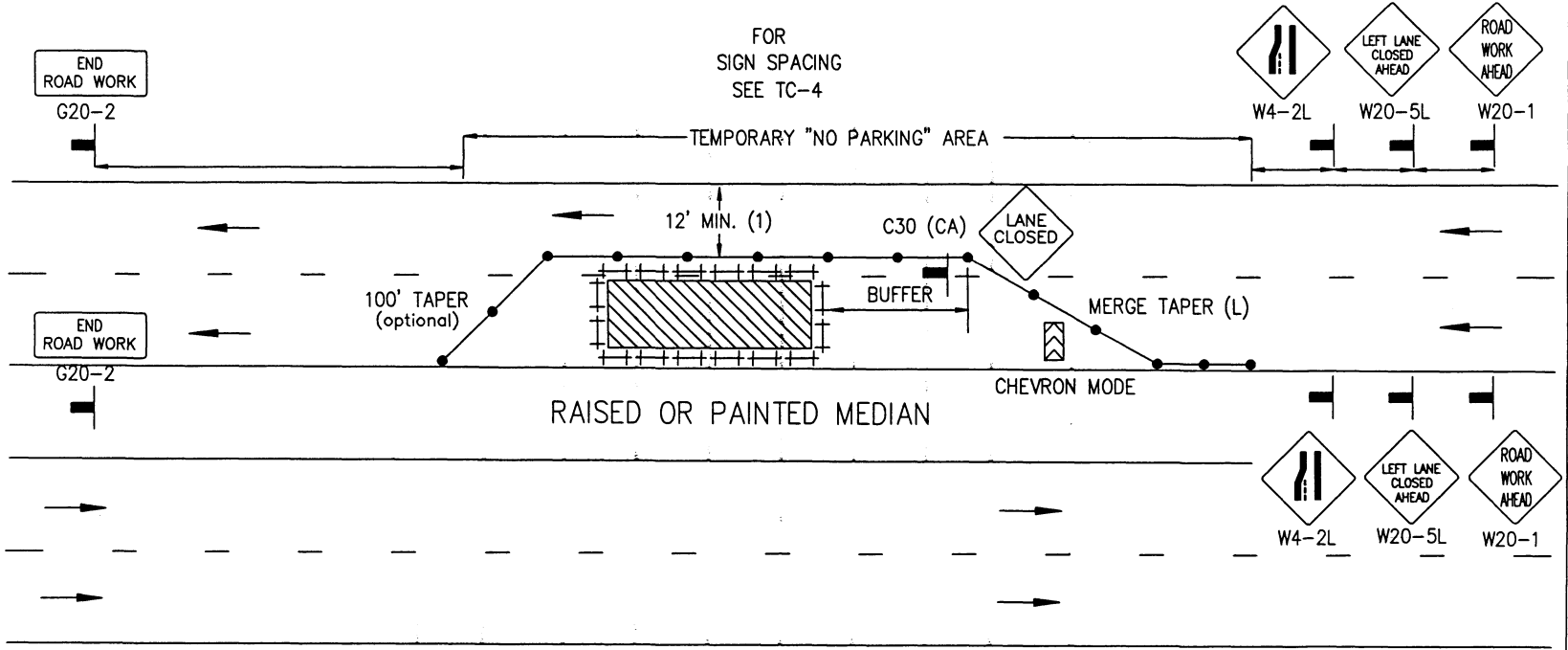
PHONE _____

DRAWING NUMBER

TC-22

CENTER OF ROAD WORK AREA
MULTILANE TRAFFIC CONTROL WITH RAISED MEDIAN
LEFT LANE TRAFFIC LANE CLOSURE - ONE LANE

APPENDIX "A"
SAN DIEGO REGIONAL STANDARD



SEE GENERAL NOTES

- 1. 14' MINIMUM ON ROADWAY WITH BIKE LANES

LEGEND

- CONE
- ++ BARRICADE
- FLAGGER
- ▬ SIGN
- ⚡ FLASHING ARROW SIGN
- ▨ WORK AREA
- TRAFFIC DIRECTION

AGENCY ENGINEER'S COMMENTS

POSTED SPEED LIMIT	APPROACH SPEED	TAPER LENGTH	SPACING OF CONES	SIGN SPACING	BUFFER LENGTH

GENERAL NOTES

See TC-4 for sign spacing, spacing for cones, taper and buffer lengths.
 For hours of darkness, change cones to vertical barricades with steady burn lights.
 This plan DOES NOT apply to signalized or multi-way stop intersections. Consult the local jurisdiction when preparing Traffic Control Plans near these intersections.
 This plan MAY NOT apply when the work areas affect bike lanes, sidewalks, pedestrian access and curved or narrow roadways. Consult the approving agency when preparing the Traffic Control Plan or these areas.
 Nothing contained on this drawing shall prevent local jurisdictions from modifying, changing or adopting new specifications deemed necessary. Criteria for position, location and use of Traffic Control Devices is solely for the purpose of guidance to assist in the set up of the Traffic Control Plans.
 TC-5 is required for all Traffic Control Plans.

SUBMITTED BY:

NAME _____
 COMPANY _____
 ADDRESS _____
 PHONE _____

Revision	By	Approved	Date
ORIGINAL	CRH	<i>[Signature]</i>	4/27/06

AGENCY USE

APPLICANT USE

Revision	By	Approved	Date
DRAWING CRH			4/06
ORIGINAL			4/27/06

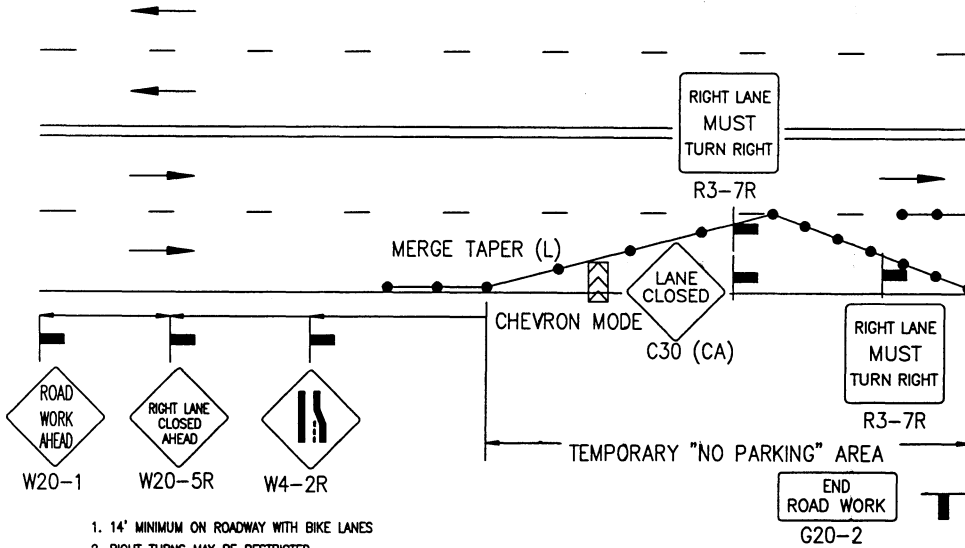
SIGN SPACING
SEE TC-4
USE FOR ALL
INTERSECTION LEGS

END ROAD WORK
G20-2

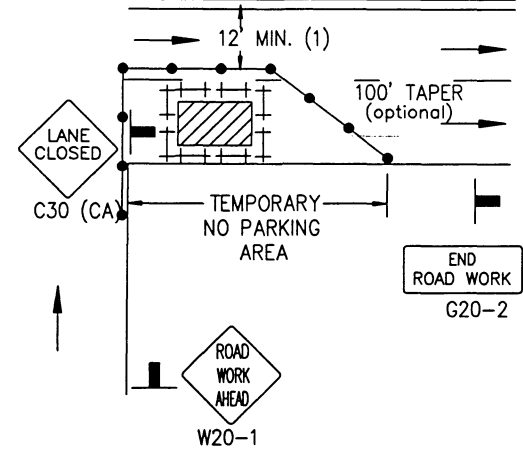
ROAD WORK AHEAD
W20-1

END ROAD WORK
G20-2

ROAD WORK AHEAD
W20-1



(2)(3)



1. 14' MINIMUM ON ROADWAY WITH BIKE LANES
2. RIGHT TURNS MAY BE RESTRICTED
3. SEE TC-41 FOR PEDESTRIAN CONTROLS

LEGEND

- CONE † BARRICADE ■ FLAGGER ▬ SIGN ▨ FLASHING ARROW SIGN ▨ WORK AREA ⇄ TRAFFIC DIRECTION

AGENCY ENGINEER'S COMMENTS

POSTED SPEED LIMIT	APPROACH SPEED	TAPER LENGTH	SPACING OF CONES	SIGN SPACING	BUFFER LENGTH

GENERAL NOTES

See TC-4 for sign spacing, spacing of cones, taper and buffer lengths.
 For hours of darkness, change cones to vertical barricades with steady burn lights.
 This plan MAY NOT apply to signalized or multi-way stop intersections. Consult the local jurisdiction when preparing Traffic Control Plans near these intersections.
 This plan MAY NOT apply when the work areas affect bike lanes, sidewalks, pedestrian access and curved or narrow roadways. Consult the approving agency when preparing the Traffic Control Plan or these areas.
 Nothing contained on this drawing shall prevent local jurisdictions from modifying, changing or adopting new specifications deemed necessary. Criteria for position, location and use of Traffic Control Devices is solely for the purpose of guidance to assist in the set up of the Traffic Control Plans.
 TC-5 is required for all Traffic Control PLans.

APPENDIX "A"
 SAN DIEGO REGIONAL STANDARD
 SIDE OF ROAD WORK AREA
 INTERSECTION TRAFFIC CONTROL

DRAWING NUMBER
 TC-23

SUBMITTED BY:

NAME _____
 COMPANY _____
 ADDRESS _____
 PHONE _____

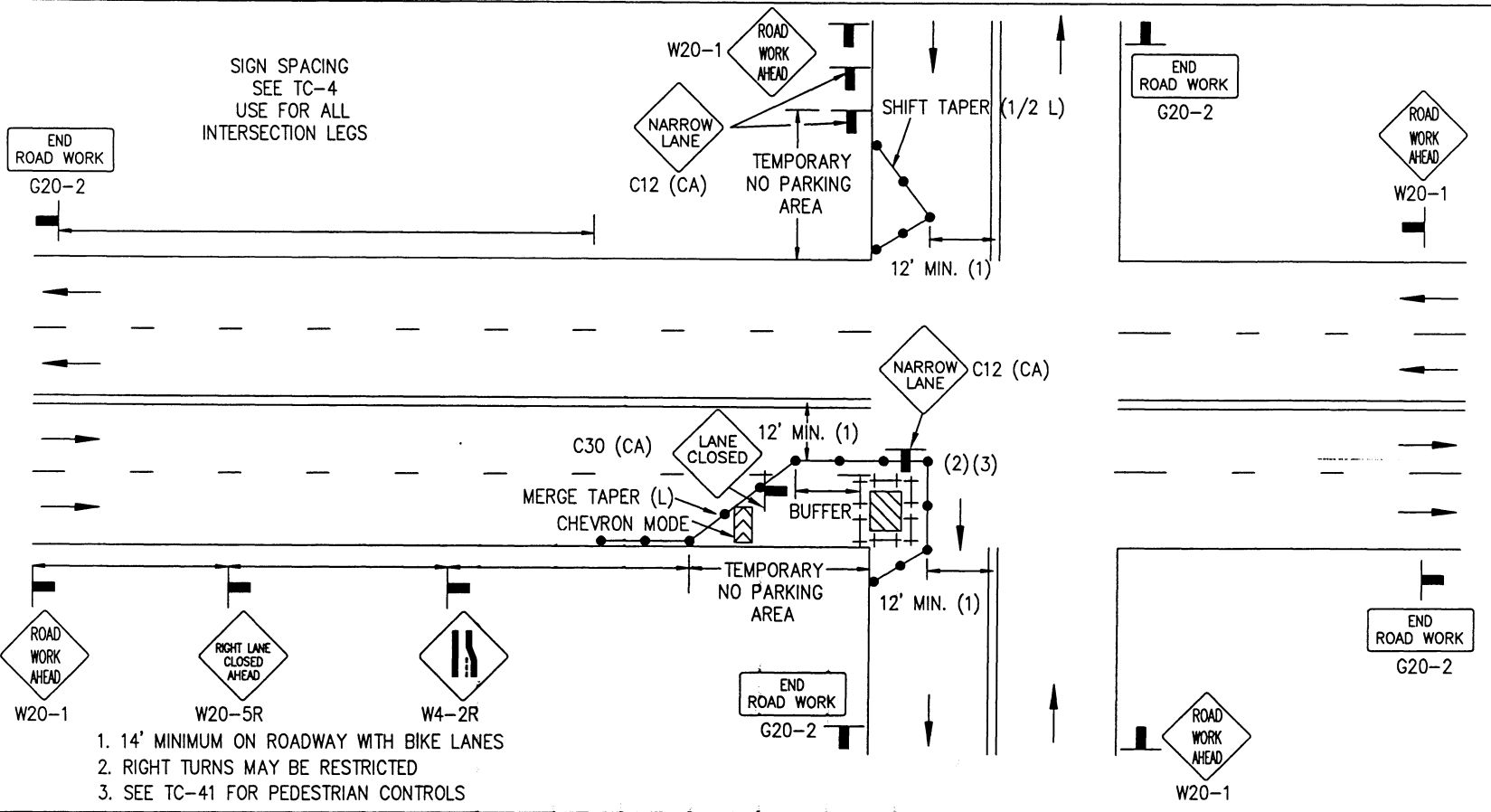
AGENCY USE

APPLICANT USE

DRAWING NUMBER TC-24

SIDE OF ROAD WORK AREA
INTERSECTION TRAFFIC CONTROL

APPENDIX "A"
SAN DIEGO REGIONAL STANDARD



1. 14' MINIMUM ON ROADWAY WITH BIKE LANES
2. RIGHT TURNS MAY BE RESTRICTED
3. SEE TC-41 FOR PEDESTRIAN CONTROLS

LEGEND

- CONE
- ++ BARRICADE
- FLAGGER
- SIGN
- ▨ FLASHING ARROW SIGN
- ▨ WORK AREA
- TRAFFIC DIRECTION

AGENCY ENGINEER'S COMMENTS

POSTED SPEED LIMIT	APPROACH SPEED	TAPER LENGTH	SPACING OF CONES	SIGN SPACING	BUFFER LENGTH

GENERAL NOTES

See TC-4 for sign spacing, spacing of cones, taper and buffer lengths.
 For hours of darkness, change cones to vertical barricades with steady burn lights.

This plan MAY NOT apply to signalized or multi-way stop intersections. Consult the local jurisdiction when preparing Traffic Control Plans near these intersections.

This plan MAY NOT apply when the work areas affect bike lanes, sidewalks, pedestrian access and curved or narrow roadways. Consult the approving agency when preparing the Traffic Control Plan or these areas.

Nothing contained on this drawing shall prevent local jurisdictions from modifying, changing or adopting new specifications deemed necessary. Criteria for position, location and use of Traffic Control Devices is solely for the purpose of guidance to assist in the set up of the Traffic Control Plans.

TC-5 is required for all Traffic Control Plans.

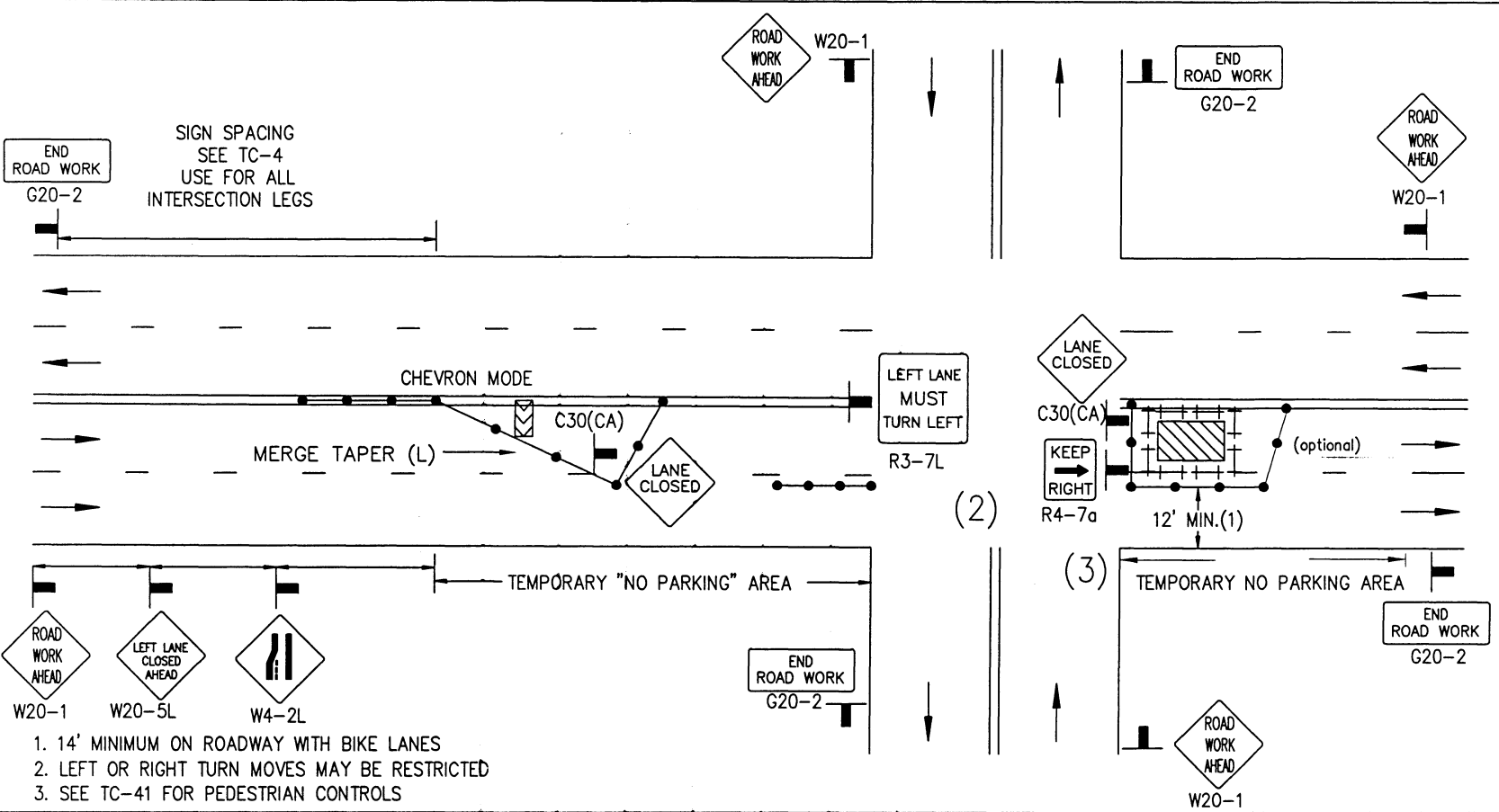
SUBMITTED BY:
 NAME _____
 COMPANY _____
 ADDRESS _____
 PHONE _____

Revision	By	Approved	Date
ORIGINAL	CHH	<i>[Signature]</i>	4/27/06

AGENCY USE

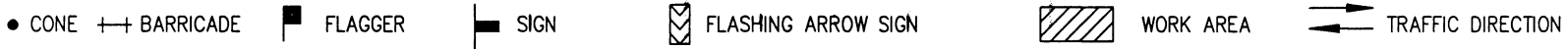
APPLICANT USE

Revision	By	Approved	Date
DRAWING CRH			4/06
ORIGINAL			4/27/06



1. 14' MINIMUM ON ROADWAY WITH BIKE LANES
2. LEFT OR RIGHT TURN MOVES MAY BE RESTRICTED
3. SEE TC-41 FOR PEDESTRIAN CONTROLS

LEGEND



AGENCY ENGINEER'S COMMENTS

POSTED SPEED LIMIT	APPROACH SPEED	TAPER LENGTH	SPACING OF CONES	SIGN SPACING

SEE TC-4 FOR SIGN, CONE SPACING AND TAPER LENGTH

GENERAL NOTES

For hours of darkness, change cones to vertical barricades with steady burn lights.

This plan MAY NOT apply to signalized or multi-way stop intersections. Consult the local jurisdiction when preparing Traffic Control Plans near these intersections.

This plan MAY NOT apply when the work areas affect bike lanes, sidewalks, pedestrian access and curved or narrow roadways. Consult the approving agency when preparing the Traffic Control Plan or these areas.

nothing contained on this drawing shall prevent local jurisdictions from modifying, changing or adopting new specifications deemed necessary. Criteria for position, location and use of Traffic Control Devices is solely for the purpose of guidance to assist in the set up of the Traffic Control Plans.

TC-5 is required for all Traffic Control Plans.

SUBMITTED BY:

NAME _____
 COMPANY _____
 ADDRESS _____
 PHONE _____

AGENCY USE

APPLICANT USE

APPENDIX "A"
 SAN DIEGO REGIONAL STANDARD
 CENTER OF ROAD WORK AREA
 INTERSECTION TRAFFIC CONTROL

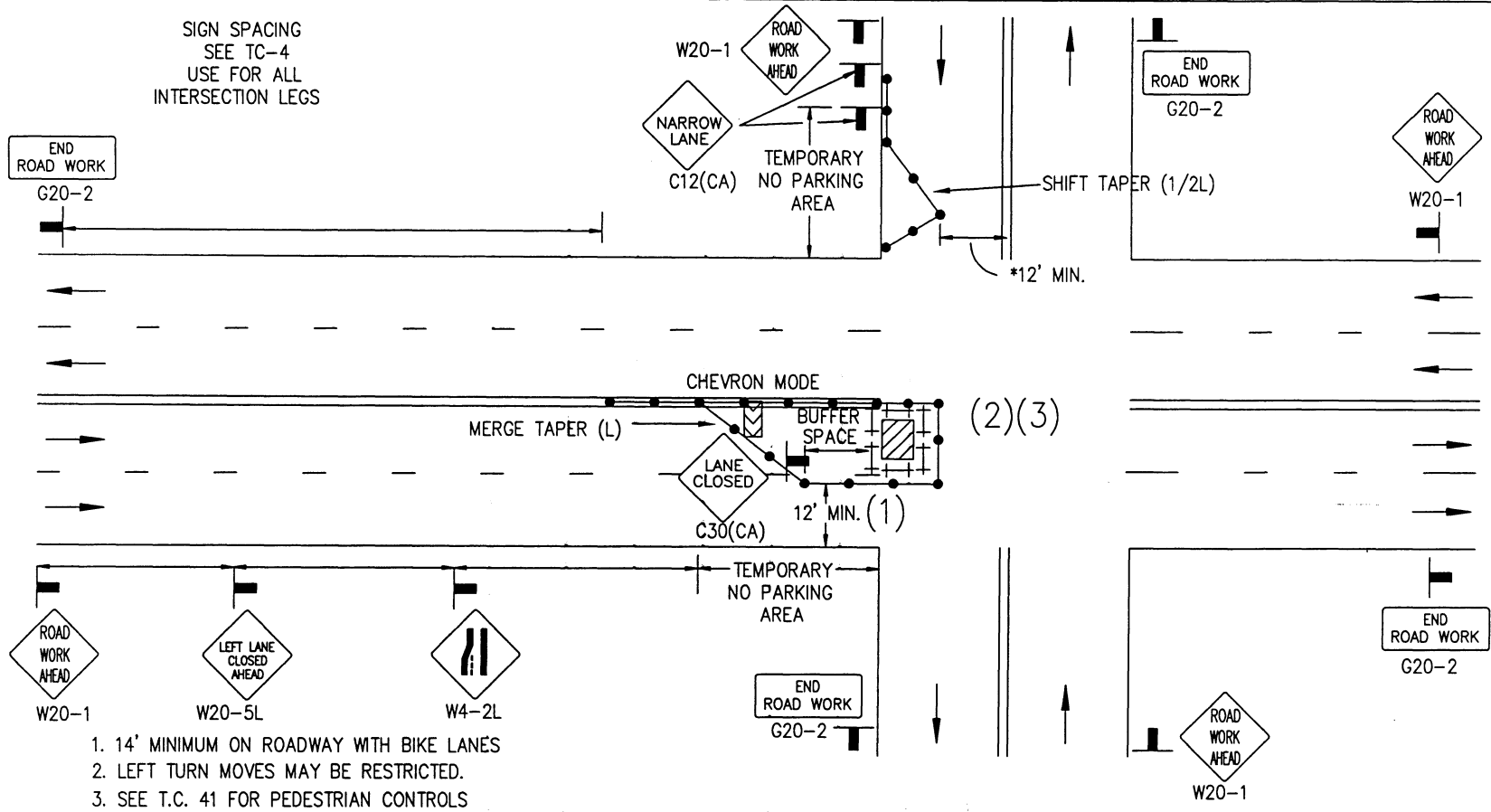
DRAWING NUMBER TC-25

DRAWING NUMBER
TC-26

CENTER OF ROAD WORK AREA
INTERSECTION TRAFFIC CONTROL

APPENDIX "A"
SAN DIEGO REGIONAL STANDARD

SIGN SPACING
SEE TC-4
USE FOR ALL
INTERSECTION LEGS



1. 14' MINIMUM ON ROADWAY WITH BIKE LANES
2. LEFT TURN MOVES MAY BE RESTRICTED.
3. SEE T.C. 41 FOR PEDESTRIAN CONTROLS

LEGEND

- CONE ++ BARRICADE ■ FLAGGER ┌ SIGN ▨ FLASHING ARROW SIGN ▨ WORK AREA ⇄ TRAFFIC DIRECTION

AGENCY ENGINEER'S COMMENTS

POSTED SPEED LIMIT	APPROACH SPEED	TAPER LENGTH	SPACING OF CONES	SIGN SPACING

SEE TC-4 FOR SIGN, CONE SPACING AND TAPER LENGTH

GENERAL NOTES

For hours of darkness, change cones to vertical barricades with steady burn lights.

This plan MAY NOT apply to signalized or multi-way stop intersections. Consult the local jurisdiction when preparing Traffic Control Plans near these intersections.

This plan MAY NOT apply when the work areas affect bike lanes, sidewalks, pedestrian access and curved or narrow roadways. Consult the approving agency when preparing the Traffic Control Plan or these areas.

nothing contained on this drawing shall prevent local jurisdictions from modifying, changing or adopting new specifications deemed necessary. Criteria for position, location and use of Traffic Control Devices is solely for the purpose of guidance to assist in the set up of the Traffic Control Plans.

TC-5 is required for all Traffic Control Plans.

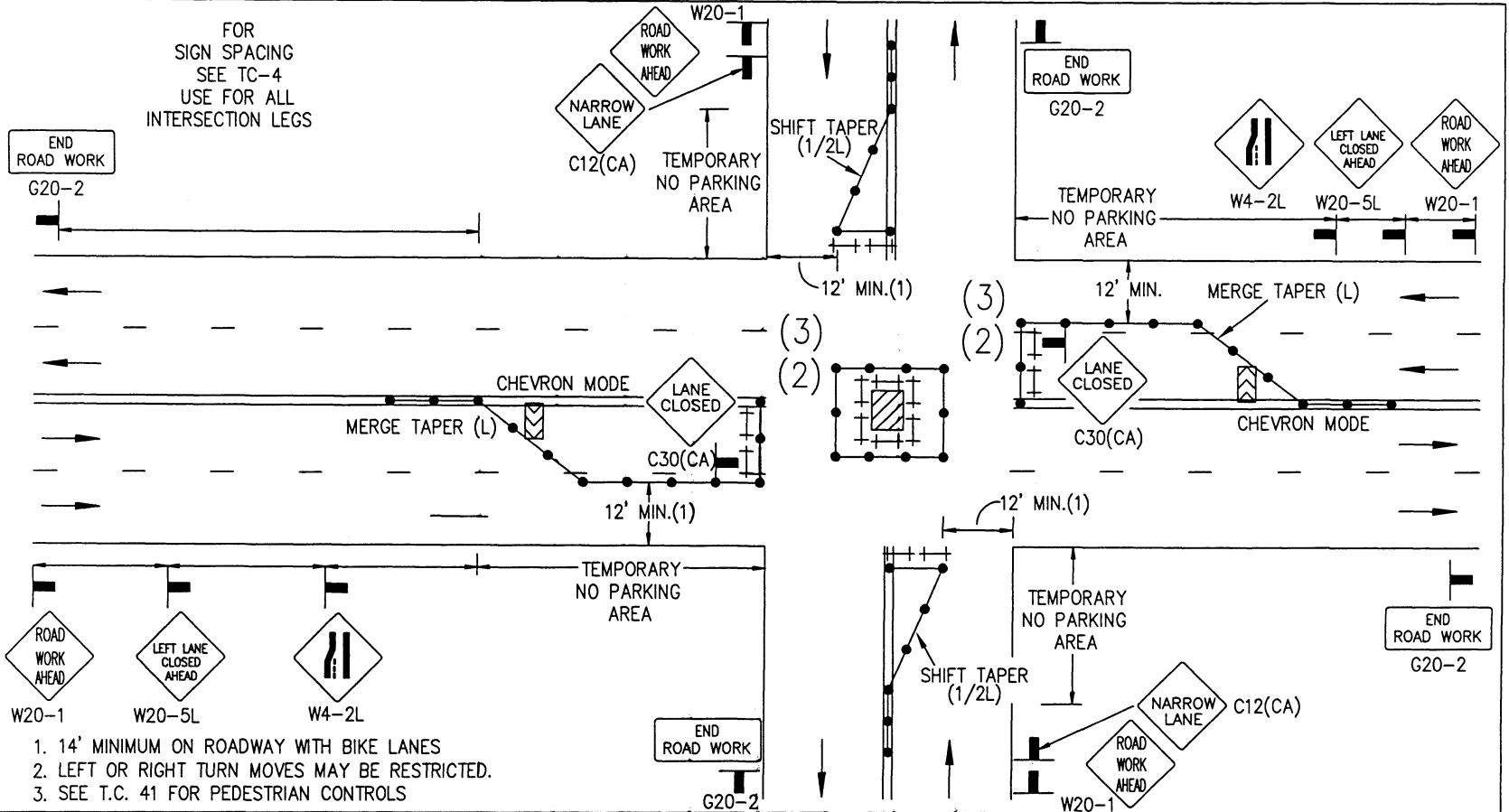
AGENCY USE

SUBMITTED BY:
 NAME _____
 COMPANY _____
 ADDRESS _____
 PHONE _____

Revision	By	Approved	Date
DRAWING CRH			4/06
ORIGINAL			4/27/06

Revision	By	Approved	Date
DRAWING CRH			4/06
ORIGINAL			4/27/06

FOR
SIGN SPACING
SEE TC-4
USE FOR ALL
INTERSECTION LEGS



1. 14' MINIMUM ON ROADWAY WITH BIKE LANES
2. LEFT OR RIGHT TURN MOVES MAY BE RESTRICTED.
3. SEE T.C. 41 FOR PEDESTRIAN CONTROLS

LEGEND

- CONE ++ BARRICADE ■ FLAGGER — SIGN ☒ FLASHING ARROW SIGN ▨ WORK AREA ⇄ TRAFFIC DIRECTION

AGENCY ENGINEER'S COMMENTS

POSTED SPEED LIMIT	APPROACH SPEED	TAPER LENGTH	SPACING OF CONES	SIGN SPACING

SEE TC-4 FOR SIGN, CONE SPACING AND TAPER LENGTH

GENERAL NOTES

For hours of darkness, change cones to vertical barricades with steady burn lights.

This plan MAY NOT apply to signalized or multi-way stop intersections. Consult the local jurisdiction when preparing Traffic Control Plans near these intersections.

This plan MAY NOT apply when the work areas affect bike lanes, sidewalks, pedestrian access and curved or narrow roadways. Consult the approving agency when preparing the Traffic Control Plan or these areas.

nothing contained on this drawing shall prevent local jurisdictions from modifying, changing or adopting new specifications deemed necessary. Criteria for position, location and use of Traffic Control Devices is solely for the purpose of guidance to assist in the set up of the Traffic Control Plans.

TC-5 is required for all Traffic Control Plans.

SUBMITTED BY:

NAME _____
 COMPANY _____
 ADDRESS _____
 PHONE _____

AGENCY USE

APPLICANT USE

APPENDIX "A"
 SAN DIEGO REGIONAL STANDARD
 CENTER OF ROAD WORK AREA
 INTERSECTION TRAFFIC CONTROL

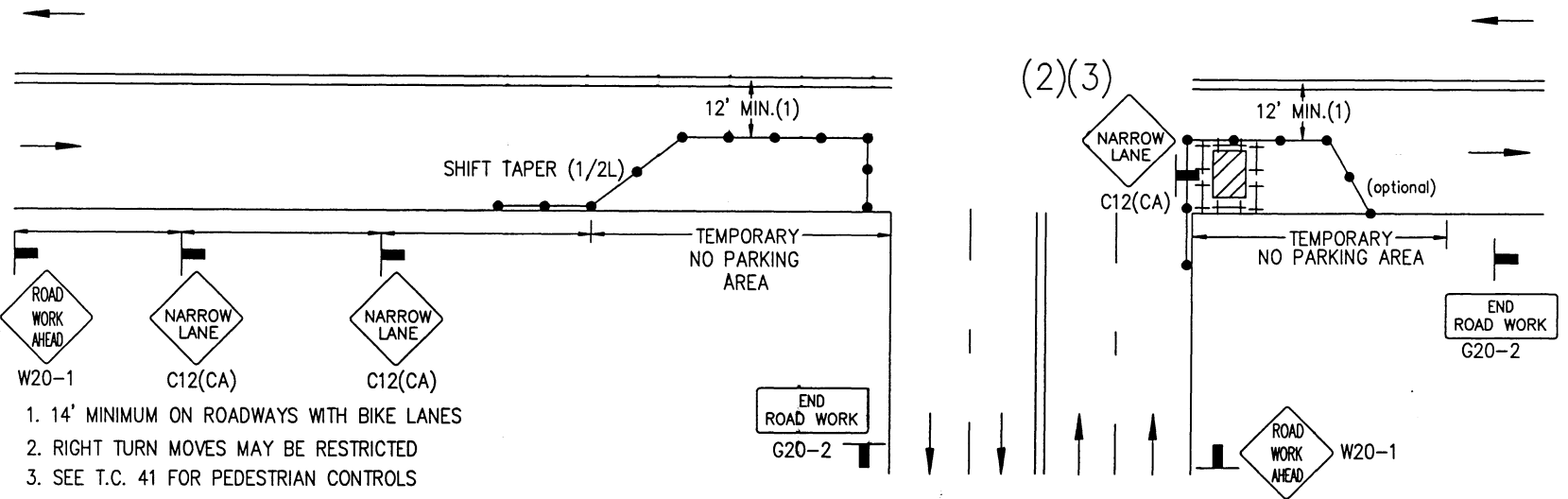
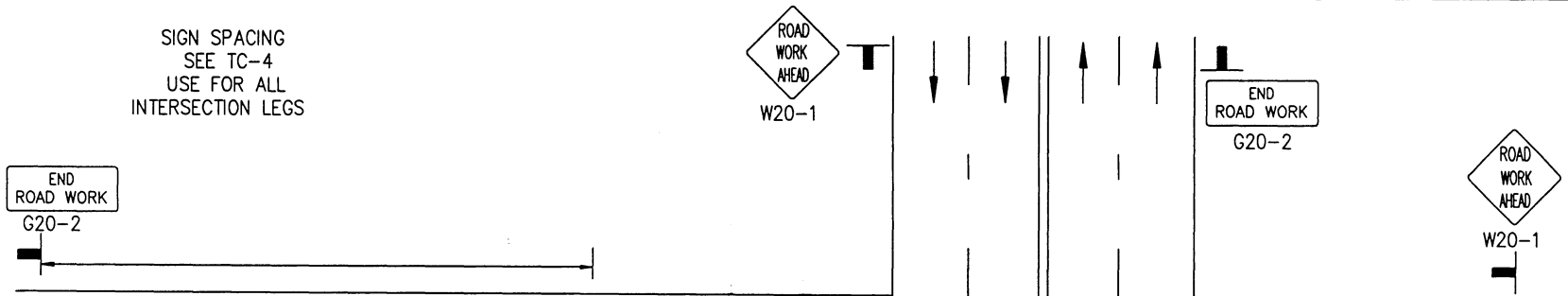
DRAWING NUMBER TC-27

DRAWING NUMBER
TC-28

SIDE OF ROAD WORK AREA
INTERSECTION TRAFFIC CONTROL

APPENDIX "A"
SAN DIEGO REGIONAL STANDARD

SIGN SPACING
SEE TC-4
USE FOR ALL
INTERSECTION LEGS



1. 14' MINIMUM ON ROADWAYS WITH BIKE LANES
2. RIGHT TURN MOVES MAY BE RESTRICTED
3. SEE T.C. 41 FOR PEDESTRIAN CONTROLS

LEGEND

- CONE †† BARRICADE ■ FLAGGER ▬ SIGN ▨ FLASHING ARROW SIGN ▨ WORK AREA ⇄ TRAFFIC DIRECTION

AGENCY ENGINEER'S COMMENTS

POSTED SPEED LIMIT	APPROACH SPEED	TAPER LENGTH	SPACING OF CONES	SIGN SPACING

SEE TC-4 FOR SIGN, CONE SPACING AND TAPER LENGTH

GENERAL NOTES

For hours of darkness, change cones to vertical barricades with steady burn lights.

This plan MAY NOT apply to signalized or multi-way stop intersections. Consult the local jurisdiction when preparing Traffic Control Plans near these intersections.

This plan MAY NOT apply when the work areas affect bike lanes, sidewalks, pedestrian access and curved or narrow roadways. Consult the approving agency when preparing the Traffic Control Plan or these areas.

nothing contained on this drawing shall prevent local jurisdictions from modifying, changing or adopting new specifications deemed necessary. Criteria for position, location and use of Traffic Control Devices is solely for the purpose of guidance to assist in the set up of the Traffic Control Plans.

TC-5 is required for all Traffic Control Plans.

SUBMITTED BY:
NAME _____
COMPANY _____
ADDRESS _____
PHONE _____

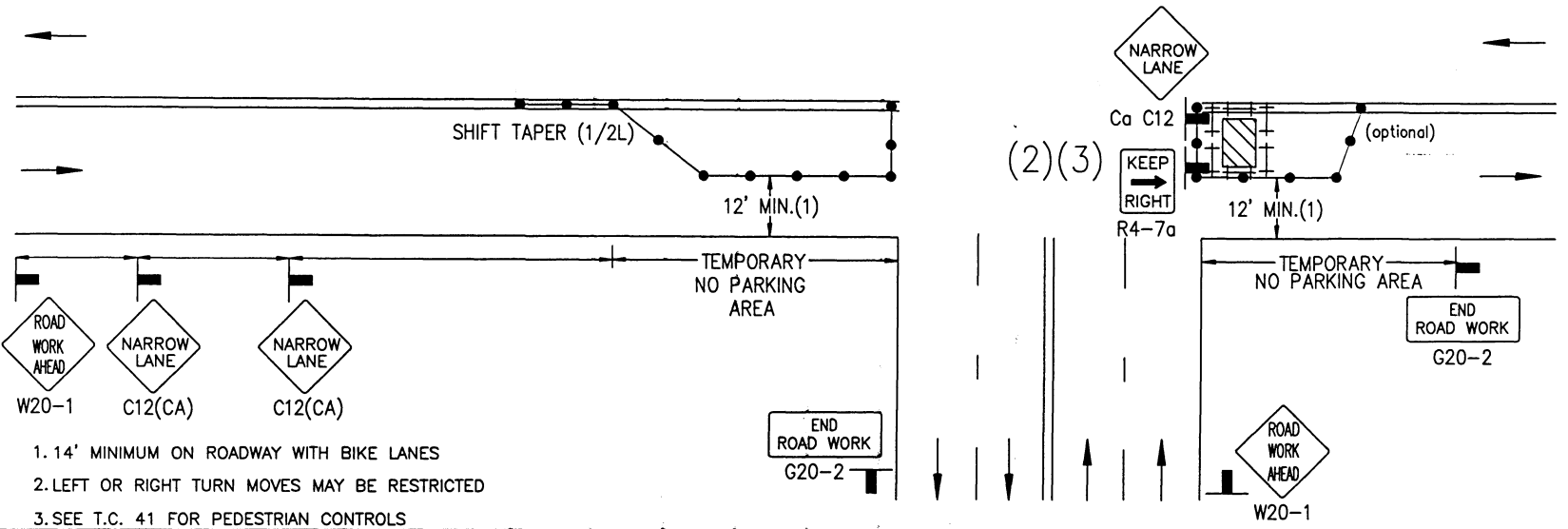
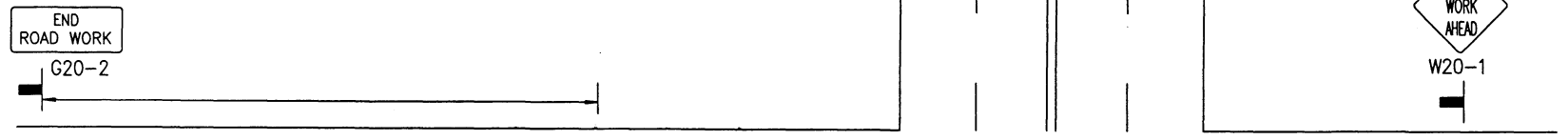
Revision	By	Approved	Date
ORIGINAL	DRAWING CRH	<i>[Signature]</i>	4/27/06

AGENCY USE

APPLICANT USE

Revision	By	Approved	Date
DRAWING CRH			4/06
ORIGINAL			4/27/06

SIGN SPACING
SEE TC-4
USE FOR ALL
INTERSECTION LEGS



1. 14' MINIMUM ON ROADWAY WITH BIKE LANES
2. LEFT OR RIGHT TURN MOVES MAY BE RESTRICTED
3. SEE T.C. 41 FOR PEDESTRIAN CONTROLS

LEGEND

- CONE ++ BARRICADE ■ FLAGGER — SIGN [] FLASHING ARROW SIGN [/] WORK AREA → TRAFFIC DIRECTION

AGENCY ENGINEER'S COMMENTS

POSTED SPEED LIMIT	APPROACH SPEED	TAPER LENGTH	SPACING OF CONES	SIGN SPACING

SEE TC-4 FOR SIGN, CONE SPACING AND TAPER LENGTH

GENERAL NOTES

For hours of darkness, change cones to vertical barricades with steady burn lights.

This plan MAY NOT apply to signalized or multi-way stop intersections. Consult the local jurisdiction when preparing Traffic Control Plans near these intersections.

This plan MAY NOT apply when the work areas affect bike lanes, sidewalks, pedestrian access and curved or narrow roadways. Consult the approving agency when preparing the Traffic Control Plan or these areas.

nothing contained on this drawing shall prevent local jurisdictions from modifying, changing or adopting new specifications deemed necessary. Criteria for position, location and use of Traffic Control Devices is solely for the purpose of guidance to assist in the set up of the Traffic Control Plans.

TC-5 is required for all Traffic Control Plans.

SUBMITTED BY:

NAME _____

COMPANY _____

ADDRESS _____

PHONE _____

AGENCY USE

APPLICANT USE

APPENDIX "A"
 SAN DIEGO REGIONAL STANDARD
 CENTER OF ROAD WORK AREA
 INTERSECTION TRAFFIC CONTROL

DRAWING NUMBER
 TC-29