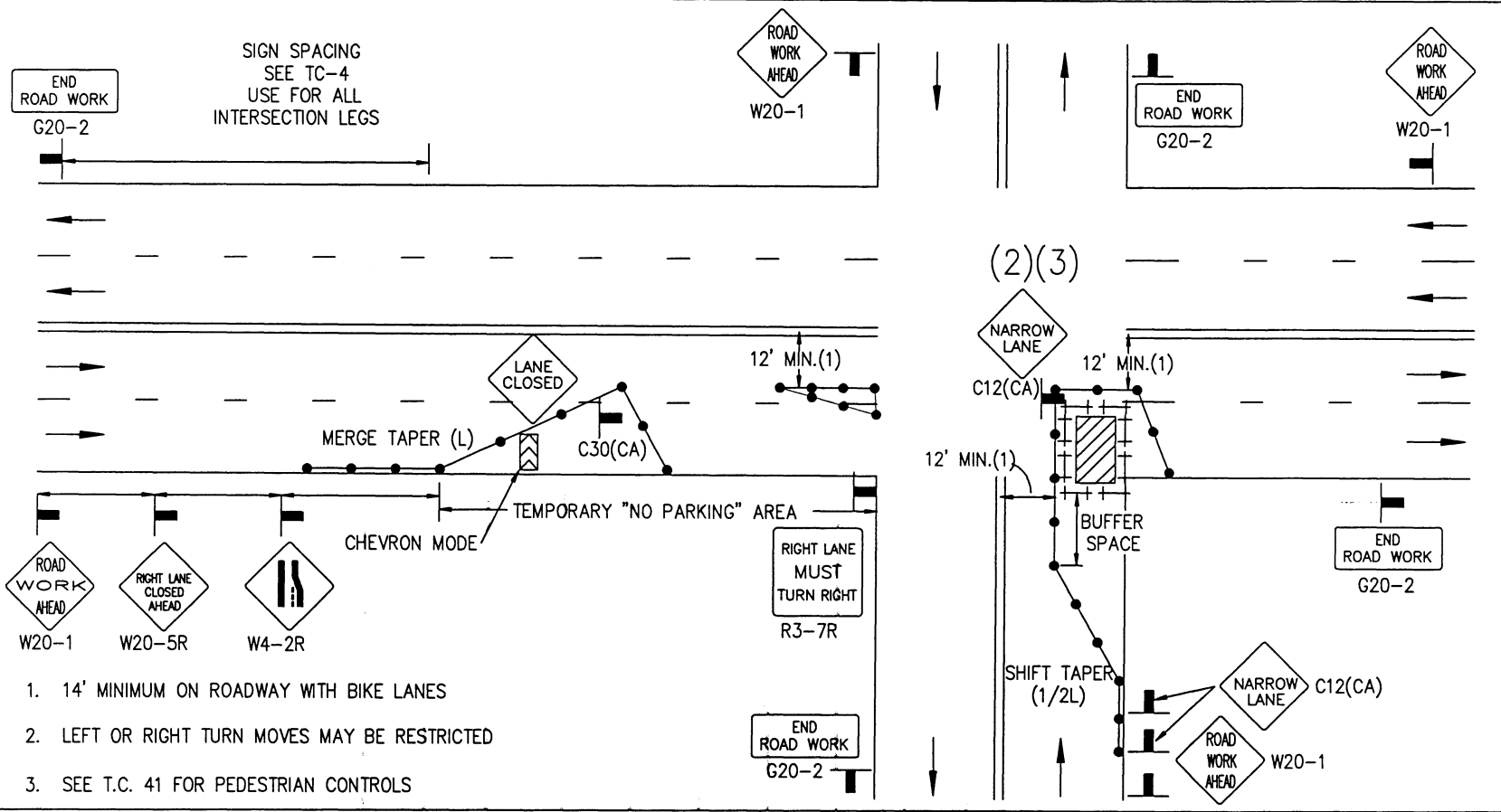


DRAWING NUMBER TC-30

APPENDIX "A"
 SAN DIEGO REGIONAL STANDARD
 SIDE OF ROAD WORK AREA
 INTERSECTION TRAFFIC CONTROL



1. 14' MINIMUM ON ROADWAY WITH BIKE LANES
2. LEFT OR RIGHT TURN MOVES MAY BE RESTRICTED
3. SEE T.C. 41 FOR PEDESTRIAN CONTROLS

LEGEND

- CONE
- ++ BARRICADE
- FLAGGER
- SIGN
- ⚡ FLASHING ARROW SIGN
- ▨ WORK AREA
- TRAFFIC DIRECTION

AGENCY ENGINEER'S COMMENTS

POSTED SPEED LIMIT	APPROACH SPEED	TAPER LENGTH	SPACING OF CONES	SIGN SPACING

SEE TC-4 FOR SIGN, CONE SPACING AND TAPER LENGTH

GENERAL NOTES

For hours of darkness, change cones to vertical barricades with steady burn lights.

This plan MAY NOT apply to signalized or multi-way stop intersections. Consult the local jurisdiction when preparing Traffic Control Plans near these intersections.

This plan MAY NOT apply when the work areas affect bike lanes, sidewalks, pedestrian access and curved or narrow roadways. Consult the approving agency when preparing the Traffic Control Plan or these areas.

nothing contained on this drawing shall prevent local jurisdictions from modifying, changing or adopting new specifications deemed necessary. Criteria for position, location and use of Traffic Control Devices is solely for the purpose of guidance to assist in the set up of the Traffic Control Plans.

TC-5 is required for all Traffic Control Plans.

SUBMITTED BY:

NAME _____

COMPANY _____

ADDRESS _____

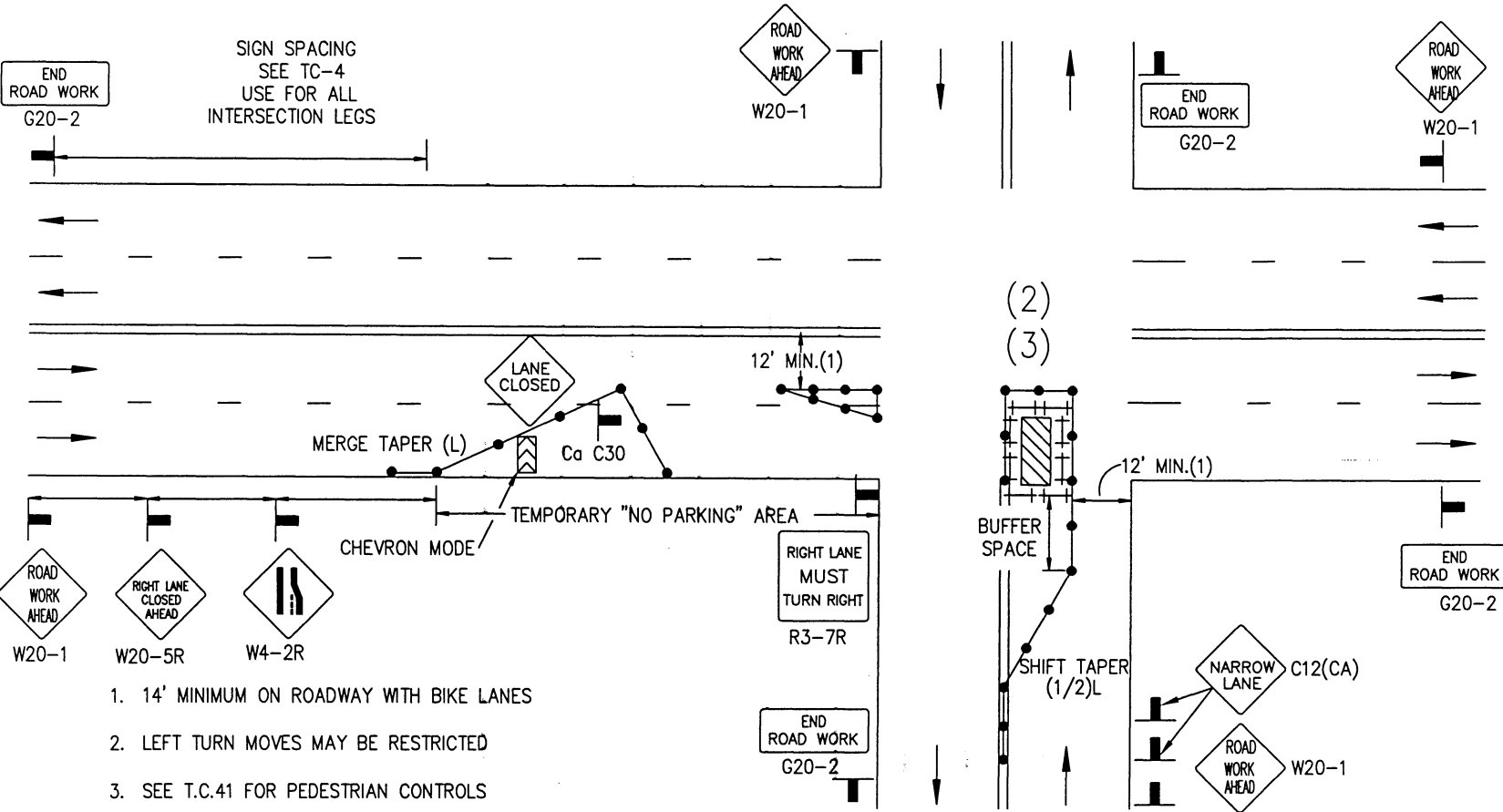
PHONE _____

Revision	By	Approved	Date
ORIGINAL	DRWING CRH		4/06
			4/27/06

AGENCY USE

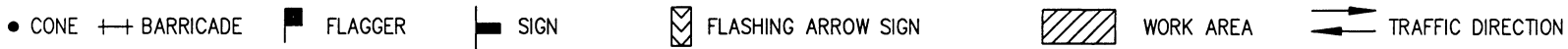
APPLICANT USE

Revision	By	Approved	Date
DRAWING CRH			4/06
ORIGINAL			4/27/06



1. 14' MINIMUM ON ROADWAY WITH BIKE LANES
2. LEFT TURN MOVES MAY BE RESTRICTED
3. SEE T.C.41 FOR PEDESTRIAN CONTROLS

LEGEND



AGENCY ENGINEER'S COMMENTS

POSTED SPEED LIMIT	APPROACH SPEED	TAPER LENGTH	SPACING OF CONES	SIGN SPACING

SEE TC-4 FOR SIGN, CONE SPACING AND TAPER LENGTH

GENERAL NOTES

For hours of darkness, change cones to vertical barricades with steady burn lights.

This plan MAY NOT apply to signalized or multi-way stop intersections. Consult the local jurisdiction when preparing Traffic Control Plans near these intersections.

This plan MAY NOT apply when the work areas affect bike lanes, sidewalks, pedestrian access and curved or narrow roadways. Consult the approving agency when preparing the Traffic Control Plan or these areas.

nothing contained on this drawing shall prevent local jurisdictions from modifying, changing or adopting new specifications deemed necessary. Criteria for position, location and use of Traffic Control Devices is solely for the purpose of guidance to assist in the set up of the Traffic Control Plans.

TC-5 is required for all Traffic Control Plans.

AGENCY USE

APPLICANT USE

SUBMITTED BY:

NAME _____

COMPANY _____

ADDRESS _____

PHONE _____

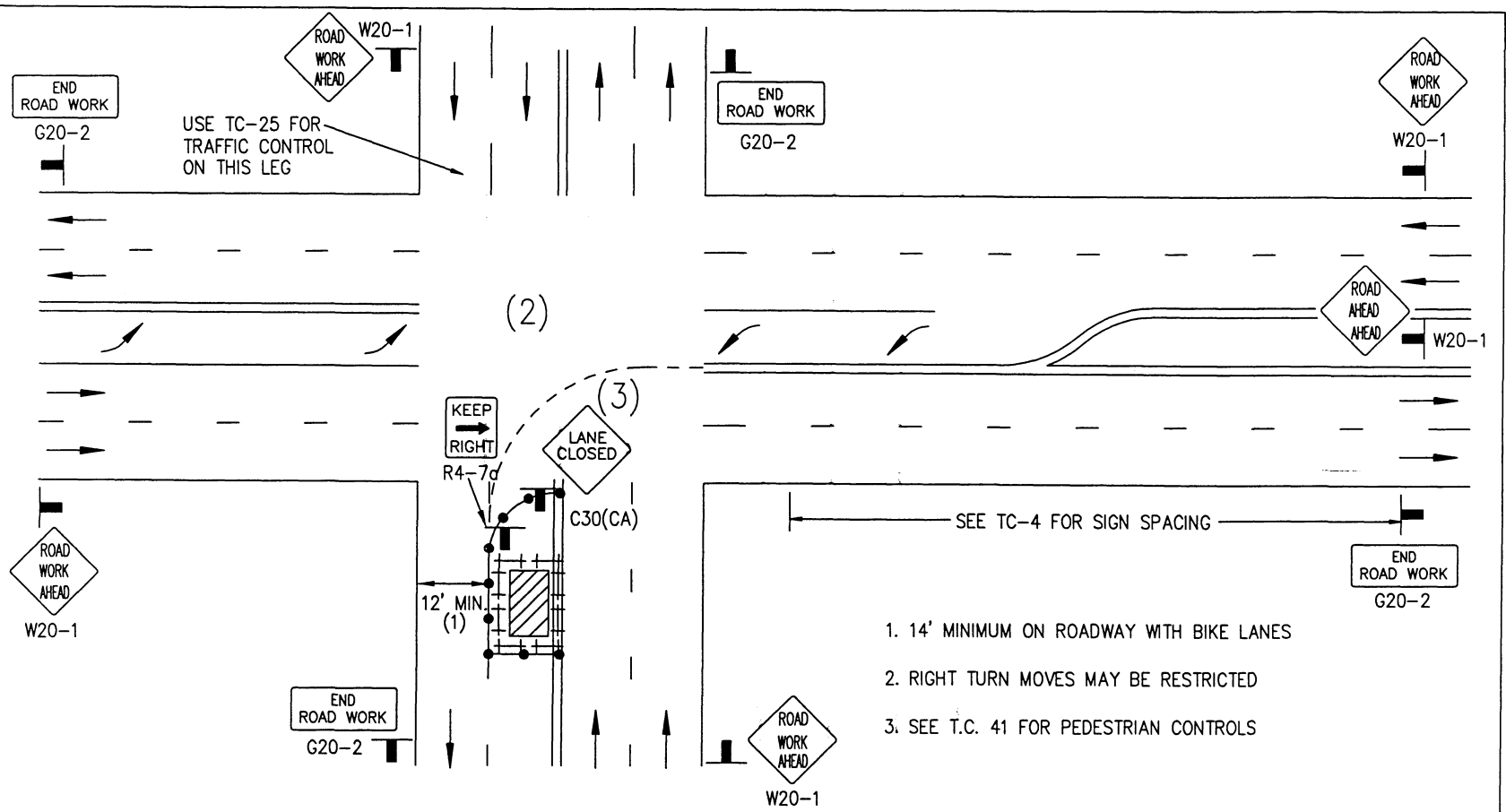
APPENDIX "A"
 SAN DIEGO REGIONAL STANDARD
 CENTER OF ROAD WORK AREA
 INTERSECTION TRAFFIC CONTROL

DRAWING NUMBER
 TC-31

DRAWING NUMBER
TC-32

SIDE OF ROAD WORK AREA
LEFT TURN INTERSECTION TRAFFIC CONTROL

APPENDIX "A"
SAN DIEGO REGIONAL STANDARD



LEGEND

- CONE
- ++ BARRICADE
- FLAGGER
- SIGN
- ◻ FLASHING ARROW SIGN
- ▨ WORK AREA
- TRAFFIC DIRECTION

AGENCY ENGINEER'S COMMENTS

POSTED SPEED LIMIT	APPROACH SPEED	TAPER LENGTH	SPACING OF CONES	SIGN SPACING

SEE TC-4 FOR SIGN, CONE SPACING AND TAPER LENGTH

GENERAL NOTES

For hours of darkness, change cones to vertical barricades with steady burn lights.

This plan MAY NOT apply to signalized or multi-way stop intersections. Consult the local jurisdiction when preparing Traffic Control Plans near these intersections.

This plan MAY NOT apply when the work areas affect bike lanes, sidewalks, pedestrian access and curved or narrow roadways. Consult the approving agency when preparing the Traffic Control Plan or these areas.

nothing contained on this drawing shall prevent local jurisdictions from modifying, changing or adopting new specifications deemed necessary. Criteria for position, location and use of Traffic Control Devices is solely for the purpose of guidance to assist in the set up of the Traffic Control Plans.

TC-5 is required for all Traffic Control Plans.

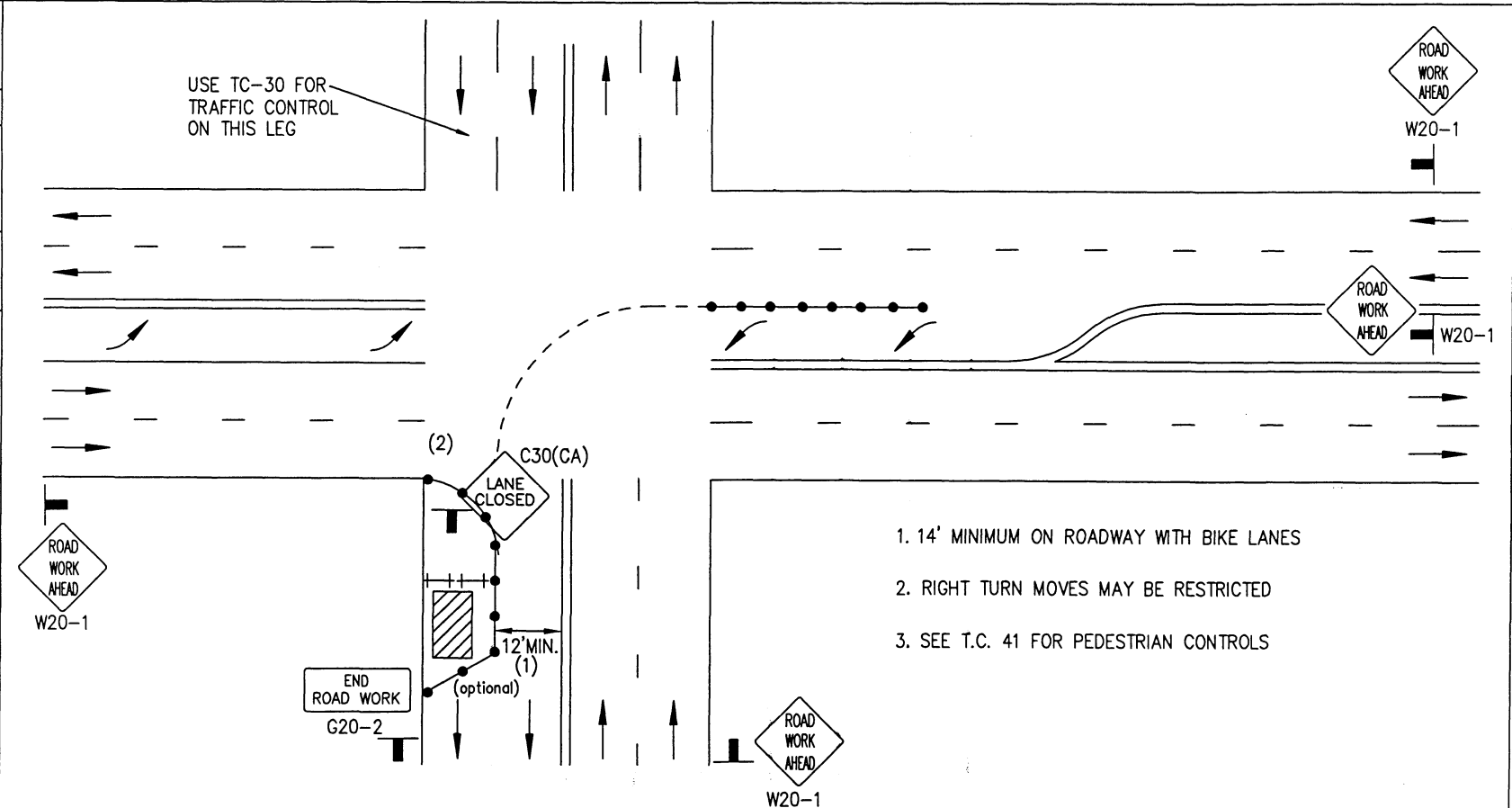
Revision	By	Approved	Date
ORIGINAL	CRH	<i>[Signature]</i>	4/27/06

SUBMITTED BY:
 NAME _____
 COMPANY _____
 ADDRESS _____
 PHONE _____

AGENCY USE

APPLICANT USE

Revision	By	Approved	Date
DRAWING CRH			4/06
ORIGINAL			4/27/06



1. 14' MINIMUM ON ROADWAY WITH BIKE LANES
2. RIGHT TURN MOVES MAY BE RESTRICTED
3. SEE T.C. 41 FOR PEDESTRIAN CONTROLS

LEGEND

- CONE
- ++ BARRICADE
- FLAGGER
- ▬ SIGN
- ◄ FLASHING ARROW SIGN
- ▨ WORK AREA
- TRAFFIC DIRECTION

AGENCY ENGINEER'S COMMENTS

POSTED SPEED LIMIT	APPROACH SPEED	TAPER LENGTH	SPACING OF CONES	SIGN SPACING

SEE TC-4 FOR SIGN, CONE SPACING AND TAPER LENGTH

GENERAL NOTES

For hours of darkness, change cones to vertical barricades with steady burn lights.

This plan MAY NOT apply to signalized or multi-way stop intersections. Consult the local jurisdiction when preparing Traffic Control Plans near these intersections.

This plan MAY NOT apply when the work areas affect bike lanes, sidewalks, pedestrian access and curved or narrow roadways. Consult the approving agency when preparing the Traffic Control Plan or these areas.

nothing contained on this drawing shall prevent local jurisdictions from modifying, changing or adopting new specifications deemed necessary. Criteria for position, location and use of Traffic Control Devices is solely for the purpose of guidance to assist in the set up of the Traffic Control Plans.

TC-5 is required for all Traffic Control Plans.

AGENCY USE

APPLICANT USE

SUBMITTED BY:

NAME _____

COMPANY _____

ADDRESS _____

PHONE _____

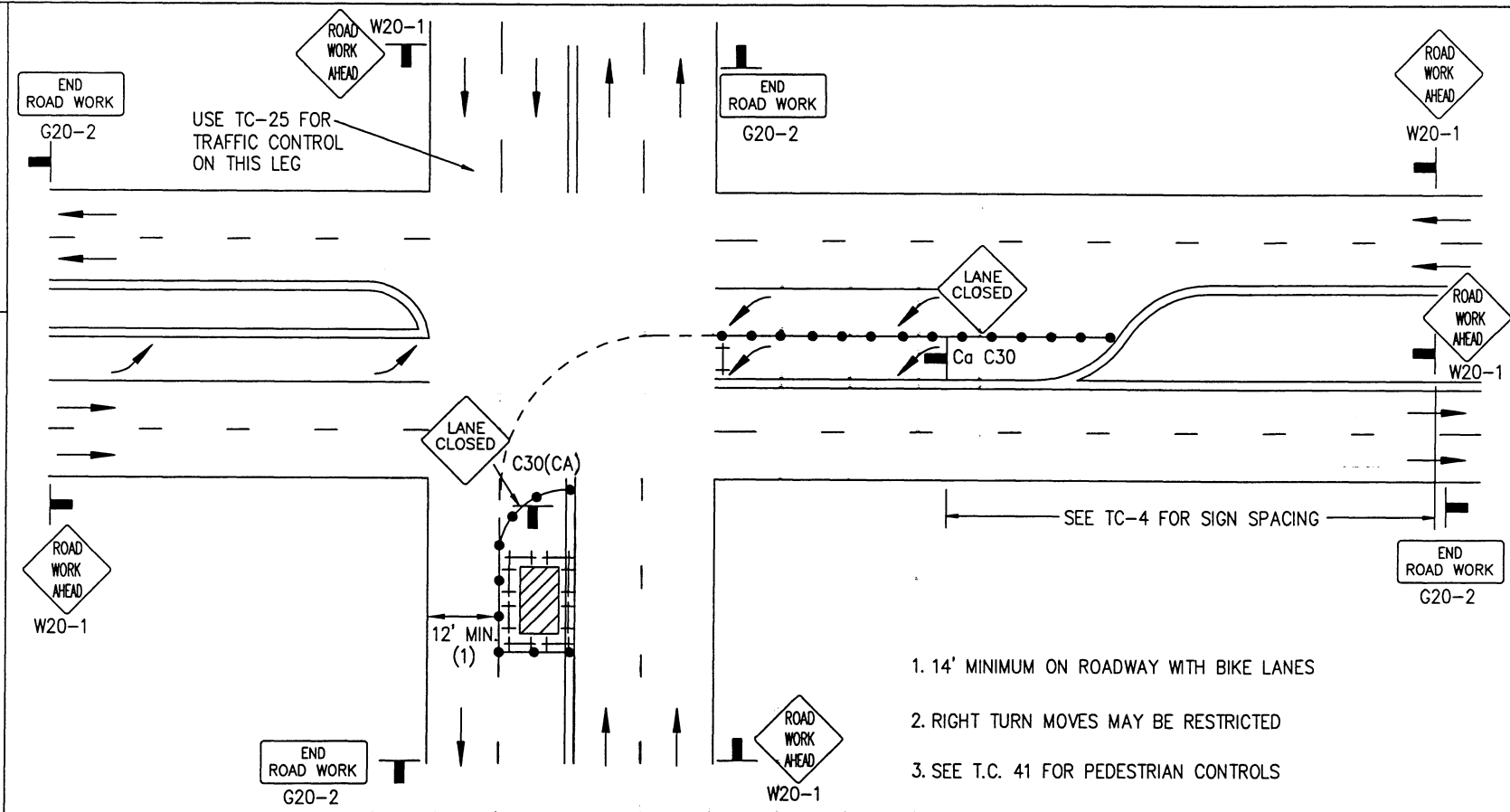
APPENDIX "A"
 SAN DIEGO REGIONAL STANDARD
 SIDE OF ROAD WORK AREA
 LEFT TURN INTERSECTION TRAFFIC CONTROL

DRAWING NUMBER TC-33

DRAWING NUMBER TC-34

SIDE OF ROAD WORK AREA
LEFT TURN INTERSECTION TRAFFIC CONTROL

APPENDIX "A"
SAN DIEGO REGIONAL STANDARD



LEGEND

- CONE ++ BARRICADE ■ FLAGGER — SIGN [] FLASHING ARROW SIGN [/ /] WORK AREA → TRAFFIC DIRECTION

AGENCY ENGINEER'S COMMENTS

POSTED SPEED LIMIT	APPROACH SPEED	TAPER LENGTH	SPACING OF CONES	SIGN SPACING

SEE TC-4 FOR SIGN, CONE SPACING AND TAPER LENGTH

GENERAL NOTES

For hours of darkness, change cones to vertical barricades with steady burn lights.

This plan MAY NOT apply to signalized or multi-way stop intersections. Consult the local jurisdiction when preparing Traffic Control Plans near these intersections.

This plan MAY NOT apply when the work areas affect bike lanes, sidewalks, pedestrian access and curved or narrow roadways. Consult the approving agency when preparing the Traffic Control Plan or these areas.

nothing contained on this drawing shall prevent local jurisdictions from modifying, changing or adopting new specifications deemed necessary. Criteria for position, location and use of Traffic Control Devices is solely for the purpose of guidance to assist in the set up of the Traffic Control Plans.

TC-5 is required for all Traffic Control Plans.

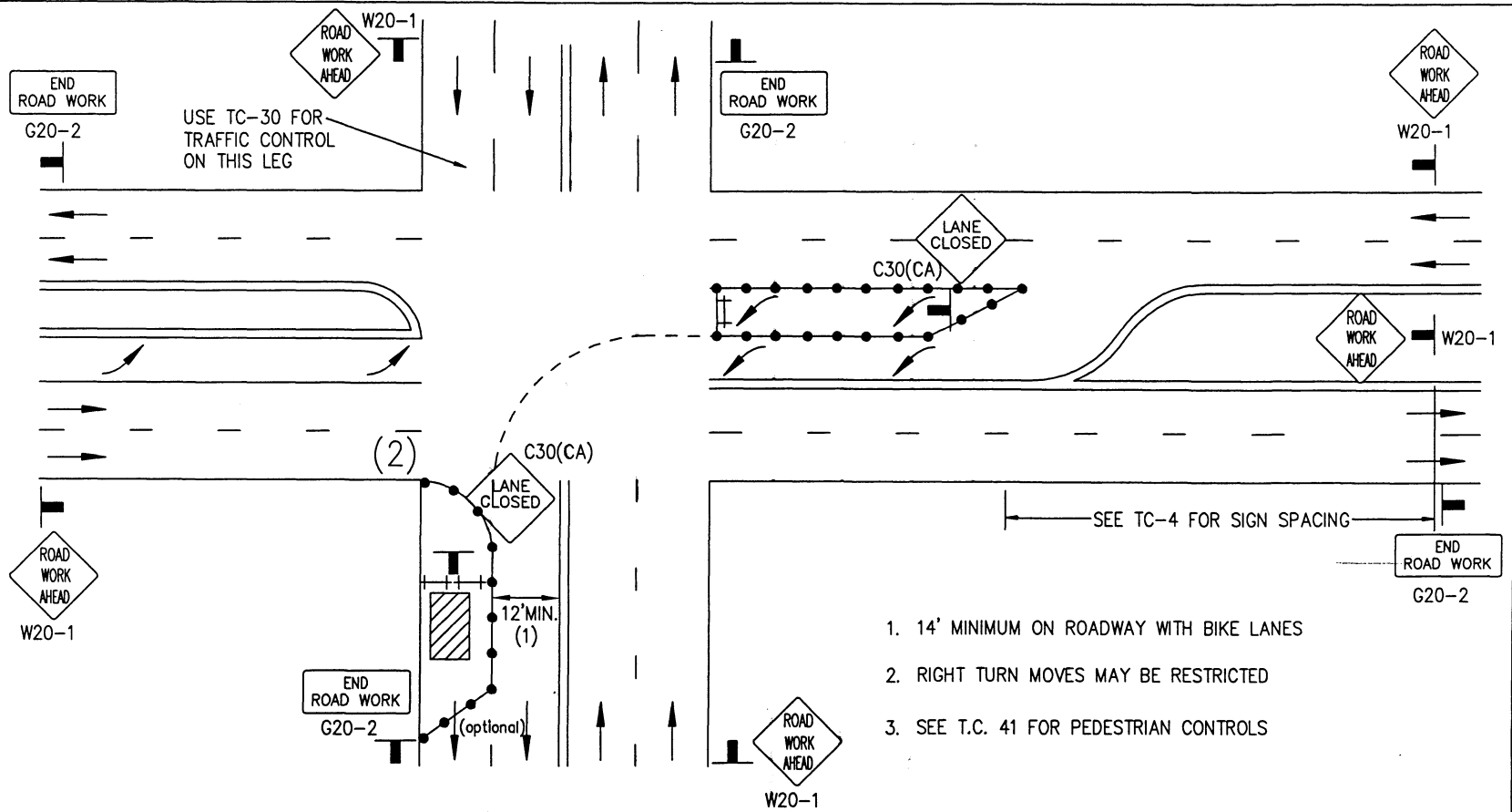
SUBMITTED BY:
 NAME _____
 COMPANY _____
 ADDRESS _____
 PHONE _____

Revision	By	Approved	Date
DRAWING CRH			4/06
ORIGINAL			4/27/06

AGENCY USE

APPLICANT USE

Revision	By	Approved	Date
DRAWING CRH			4/06
ORIGINAL			4/27/06



1. 14' MINIMUM ON ROADWAY WITH BIKE LANES
2. RIGHT TURN MOVES MAY BE RESTRICTED
3. SEE T.C. 41 FOR PEDESTRIAN CONTROLS

LEGEND

- CONE † BARRICADE █ FLAGGER █ SIGN █ FLASHING ARROW SIGN █ WORK AREA ⇄ TRAFFIC DIRECTION

AGENCY ENGINEER'S COMMENTS

POSTED SPEED LIMIT	APPROACH SPEED	TAPER LENGTH	SPACING OF CONES	SIGN SPACING

SEE TC-4 FOR SIGN, CONE SPACING AND TAPER LENGTH

GENERAL NOTES

For hours of darkness, change cones to vertical barricades with steady burn lights.

This plan MAY NOT apply to signalized or multi-way stop intersections. Consult the local jurisdiction when preparing Traffic Control Plans near these intersections.

This plan MAY NOT apply when the work areas affect bike lanes, sidewalks, pedestrian access and curved or narrow roadways. Consult the approving agency when preparing the Traffic Control Plan or these areas.

Nothing contained on this drawing shall prevent local jurisdictions from modifying, changing or adopting new specifications deemed necessary. Criteria for position, location and use of Traffic Control Devices is solely for the purpose of guidance to assist in the set up of the Traffic Control Plans.

TC-5 is required for all Traffic Control Plans.

SUBMITTED BY:

NAME _____

COMPANY _____

ADDRESS _____

PHONE _____

APPENDIX "A"
 SAN DIEGO REGIONAL STANDARD
 SIDE OF ROAD WORK AREA
 INTERSECTION TRAFFIC CONTROL

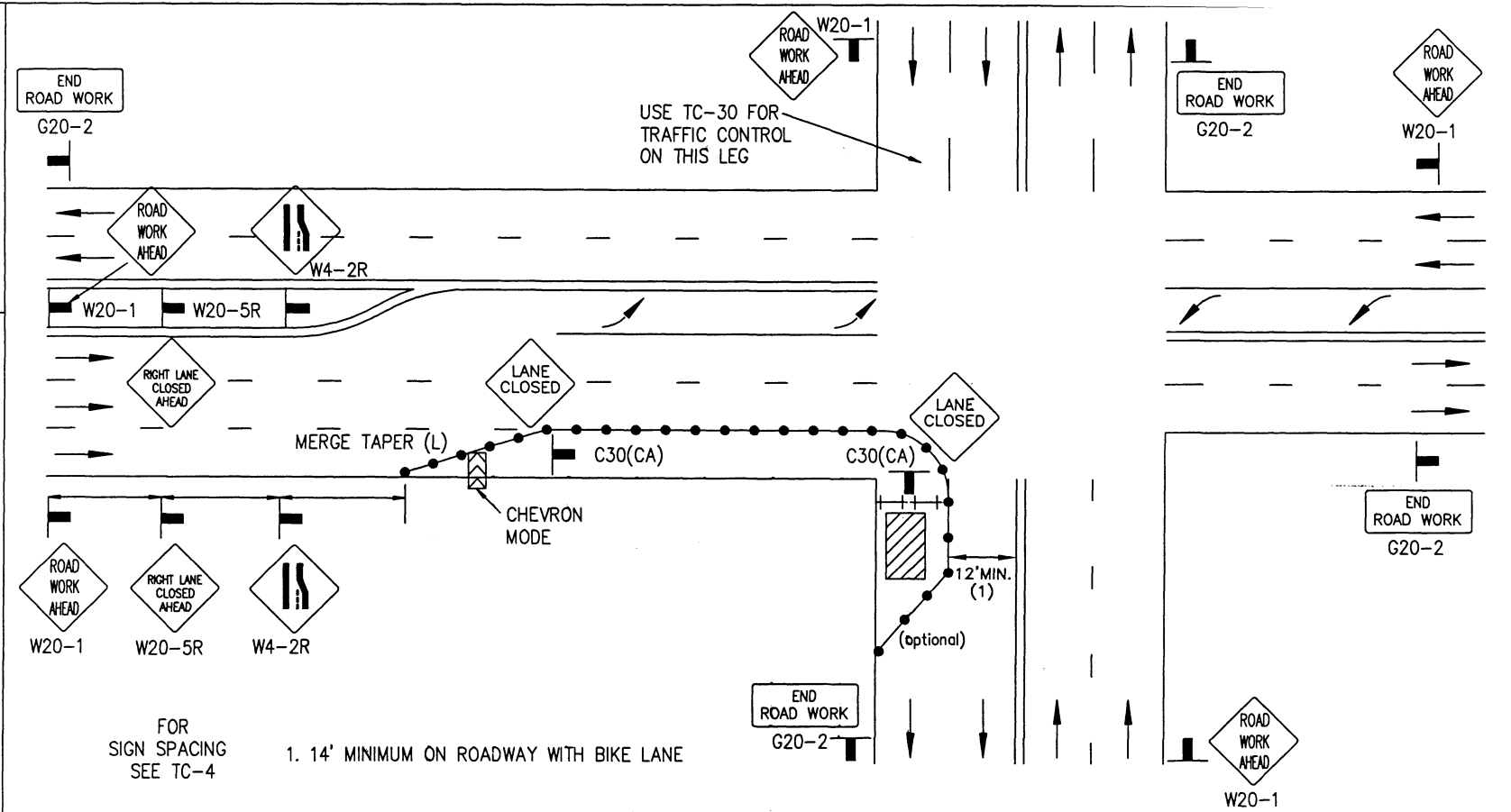
DRAWING NUMBER
 TC-35

DRAWING NUMBER

TC-36

SIDE OF ROAD WORK AREA
RIGHT TURN INTERSECTION TRAFFIC CONTROL

APPENDIX "A"
SAN DIEGO REGIONAL STANDARD



FOR SIGN SPACING SEE TC-4
1. 14' MINIMUM ON ROADWAY WITH BIKE LANE

LEGEND

- CONE ++ BARRICADE ■ FLAGGER — SIGN ▨ FLASHING ARROW SIGN ▨ WORK AREA ⇄ TRAFFIC DIRECTION

AGENCY ENGINEER'S COMMENTS

POSTED SPEED LIMIT	APPROACH SPEED	TAPER LENGTH	SPACING OF CONES	SIGN SPACING

SEE TC-4 FOR SIGN, CONE SPACING AND TAPER LENGTH

GENERAL NOTES

For hours of darkness, change cones to vertical barricades with steady burn lights.
 This plan MAY NOT apply to signalized or multi-way stop intersections. Consult the local jurisdiction when preparing Traffic Control Plans near these intersections.

This plan MAY NOT apply when the work areas affect bike lanes, sidewalks, pedestrian access and curved or narrow roadways. Consult the approving agency when preparing the Traffic Control Plan or these areas.

nothing contained on this drawing shall prevent local jurisdictions from modifying, changing or adopting new specifications deemed necessary. Criteria for position, location and use of Traffic Control Devices is solely for the purpose of guidance to assist in the set up of the Traffic Control Plans.

TC-5 is required for all Traffic Control Plans.

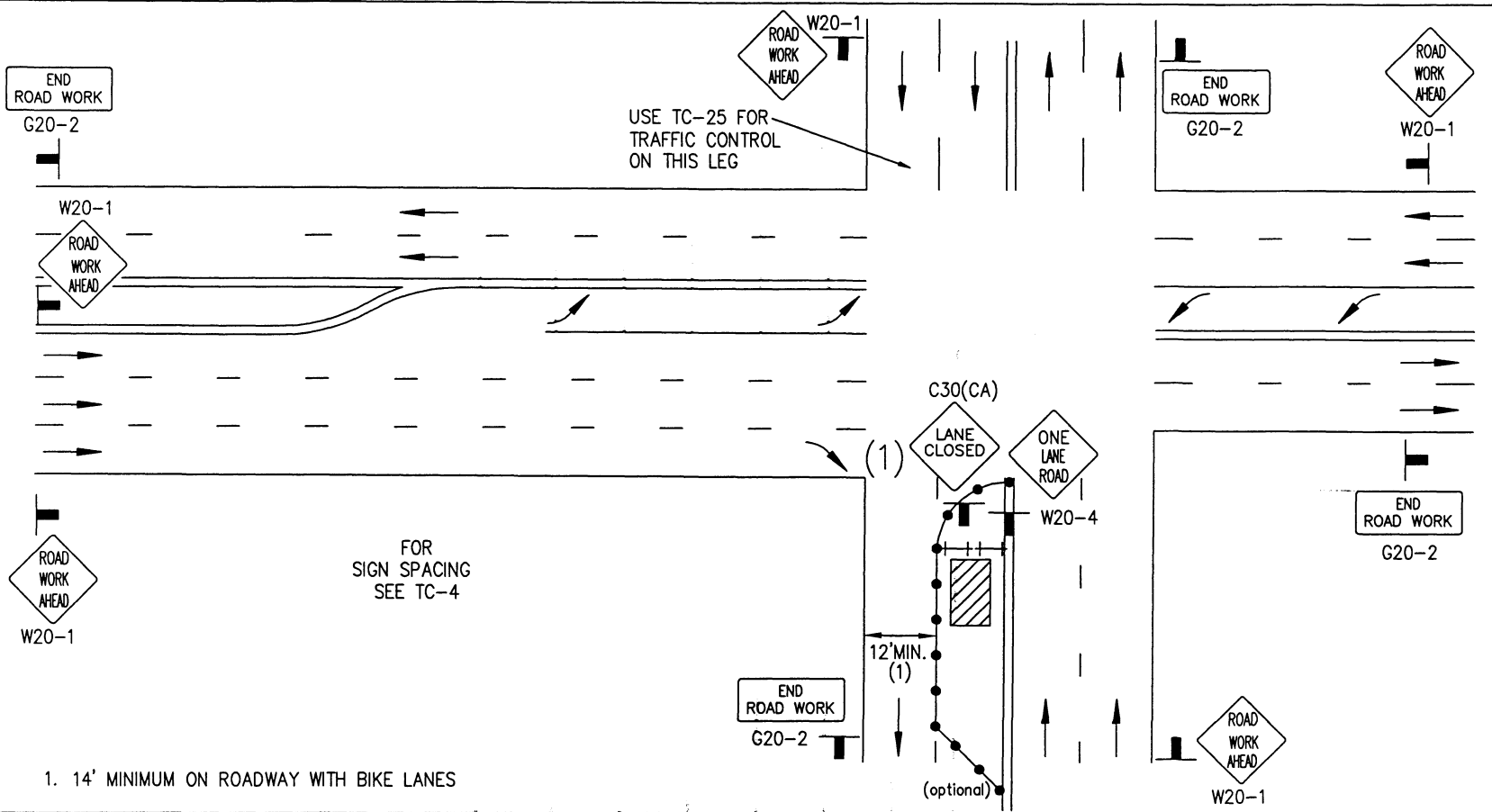
Revision	By	Approved	Date
DRAWING CRH			4/06
ORIGINAL			4/27/06

SUBMITTED BY:

NAME _____
 COMPANY _____
 ADDRESS _____
 PHONE _____

AGENCY USE
APPLICANT USE

Revision	By	Approved	Date
DRAWING CRH			4/06
ORIGINAL			4/27/06



APPENDIX "A"
 SAN DIEGO REGIONAL STANDARD
 SIDE OF ROAD WORK AREA
 RIGHT TURN INTERSECTION TRAFFIC CONTROL

LEGEND

- CONE ++ BARRICADE ■ FLAGGER — SIGN ▣ FLASHING ARROW SIGN ▨ WORK AREA → TRAFFIC DIRECTION

AGENCY ENGINEER'S COMMENTS

POSTED SPEED LIMIT	APPROACH SPEED	TAPER LENGTH	SPACING OF CONES	SIGN SPACING

SEE TC-4 FOR SIGN, CONE SPACING AND TAPER LENGTH

GENERAL NOTES

For hours of darkness, change cones to vertical barricades with steady burn lights.

This plan MAY NOT apply to signalized or multi-way stop intersections. Consult the local jurisdiction when preparing Traffic Control Plans near these intersections.

This plan MAY NOT apply when the work areas affect bike lanes, sidewalks, pedestrian access and curved or narrow roadways. Consult the approving agency when preparing the Traffic Control Plan or these areas.

nothing contained on this drawing shall prevent local jurisdictions from modifying, changing or adopting new specifications deemed necessary. Criteria for position, location and use of Traffic Control Devices is solely for the purpose of guidance to assist in the set up of the Traffic Control Plans.

TC-5 is required for all Traffic Control Plans.

SUBMITTED BY:

NAME _____

COMPANY _____

ADDRESS _____

PHONE _____

AGENCY USE

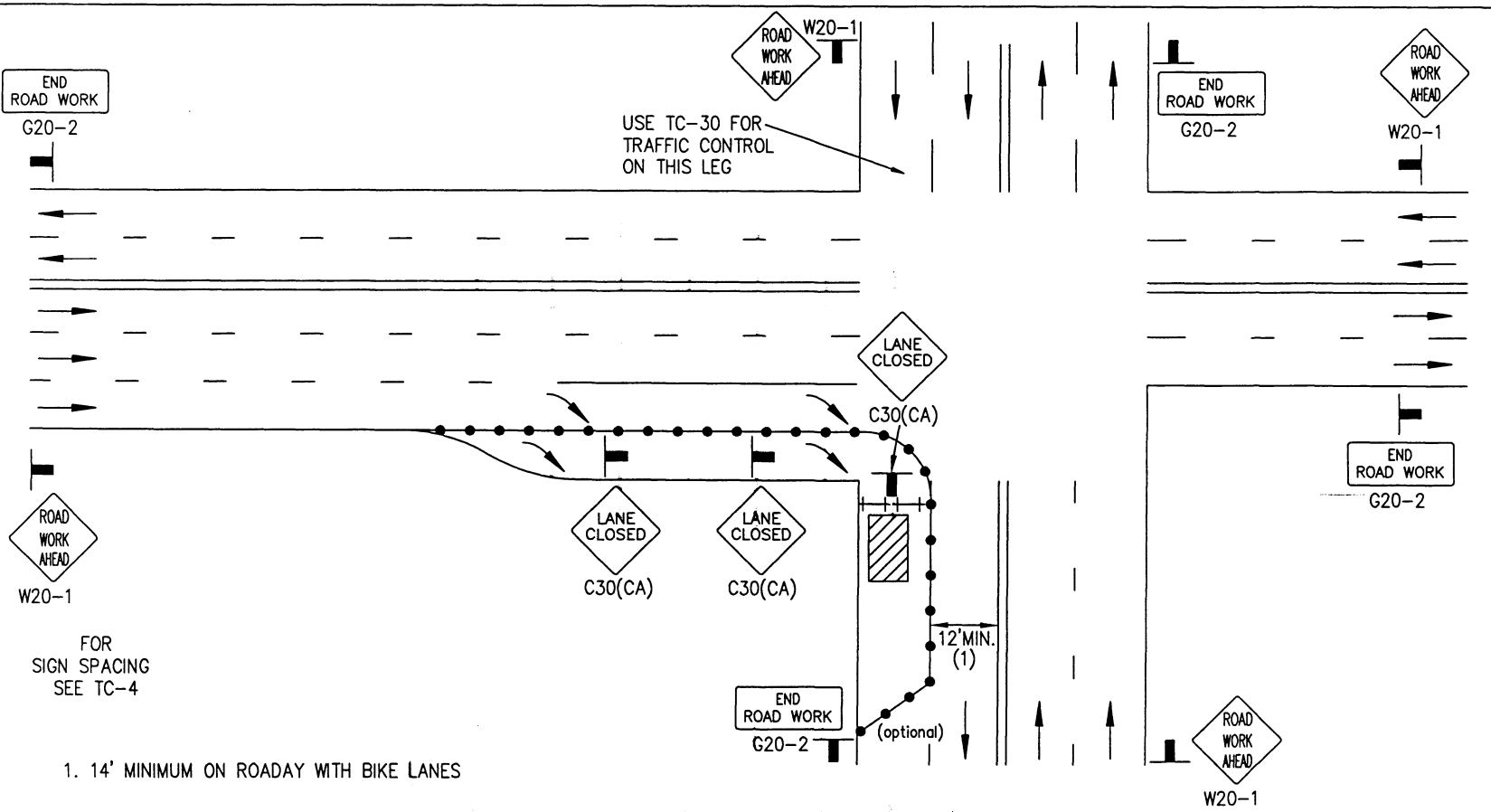
APPLICANT USE

DRAWING NUMBER TC-37

DRAWING NUMBER TC-38

SIDE OF ROAD WORK AREA
RIGHT TURN INTERSECTION TRAFFIC CONTROL

APPENDIX "A"
SAN DIEGO REGIONAL STANDARD



FOR SIGN SPACING SEE TC-4

1. 14' MINIMUM ON ROADWAY WITH BIKE LANES

LEGEND

- CONE ++ BARRICADE ■ FLAGGER ┌ SIGN ▨ FLASHING ARROW SIGN ▨ WORK AREA ⇄ TRAFFIC DIRECTION

AGENCY ENGINEER'S COMMENTS

POSTED SPEED LIMIT	APPROACH SPEED	TAPER LENGTH	SPACING OF CONES	SIGN SPACING

SEE TC-4 FOR SIGN, CONE SPACING AND TAPER LENGTH

GENERAL NOTES

For hours of darkness, change cones to vertical barricades with steady burn lights.

This plan MAY NOT apply to signalized or multi-way stop intersections. Consult the local jurisdiction when preparing Traffic Control Plans near these intersections.

This plan MAY NOT apply when the work areas affect bike lanes, sidewalks, pedestrian access and curved or narrow roadways. Consult the approving agency when preparing the Traffic Control Plan or these areas.

nothing contained on this drawing shall prevent local jurisdictions from modifying, changing or adopting new specifications deemed necessary. Criteria for position, location and use of Traffic Control Devices is solely for the purpose of guidance to assist in the set up of the Traffic Control Plans.

TC-5 is required for all Traffic Control Plans.

SUBMITTED BY:

NAME _____
 COMPANY _____
 ADDRESS _____
 PHONE _____

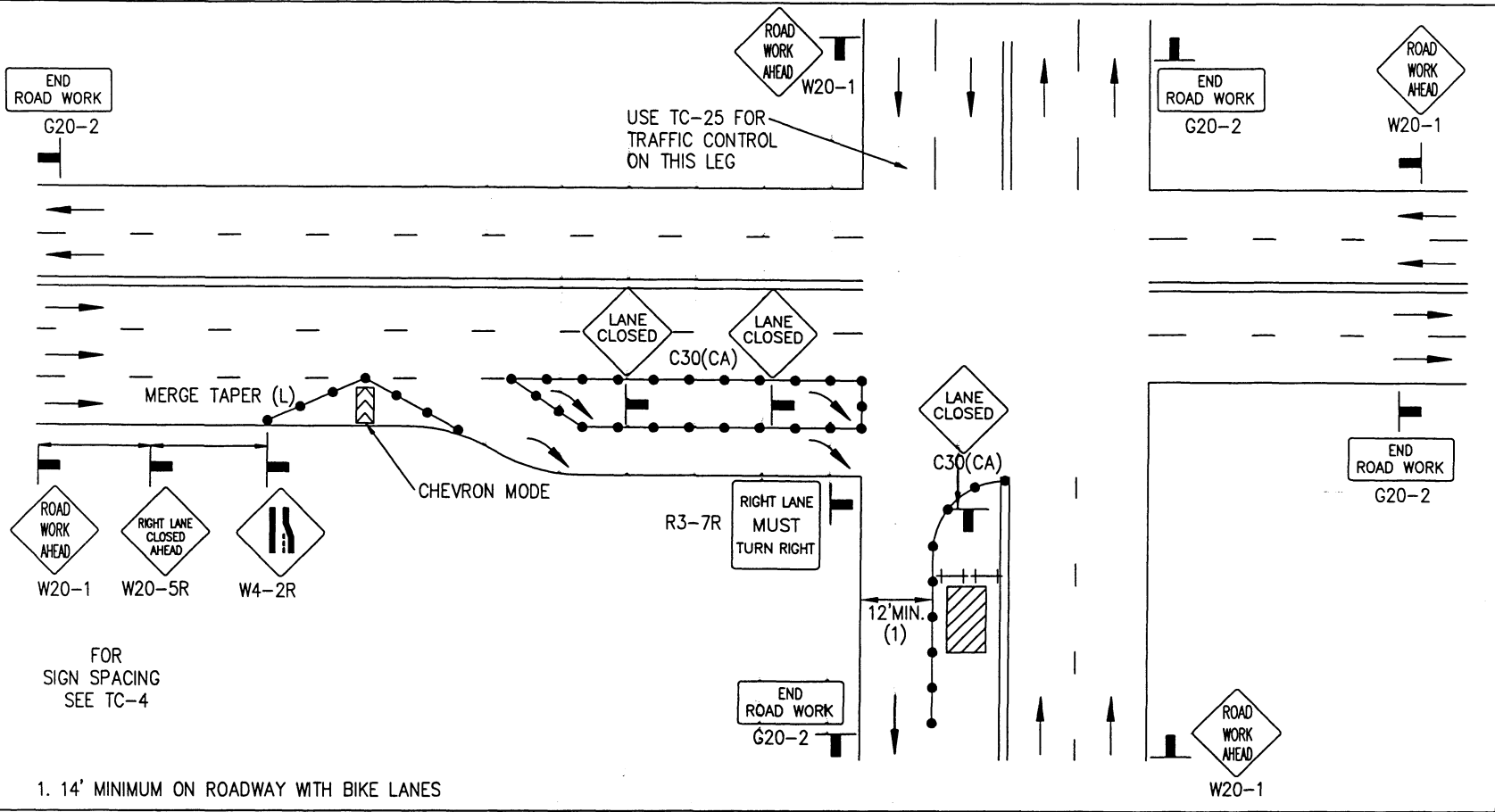
Revision	By	Approved	Date
DRAWING CRH			4/06
ORIGINAL			4/27/06

AGENCY USE

APPLICANT USE

Revision	By	Approved	Date
DRAWING CRH			4/06
ORIGINAL			4/27/06

APPENDIX "A"
 SAN DIEGO REGIONAL STANDARD
 SIDE OF ROAD WORK AREA
 RIGHT TURN INTERSECTION TRAFFIC CONTROL



1. 14' MINIMUM ON ROADWAY WITH BIKE LANES

LEGEND

- CONE † BARRICADE ■ FLAGGER ▬ SIGN ◻ FLASHING ARROW SIGN ▨ WORK AREA ⇄ TRAFFIC DIRECTION

AGENCY ENGINEER'S COMMENTS

POSTED SPEED LIMIT	APPROACH SPEED	TAPER LENGTH	SPACING OF CONES	SIGN SPACING

SEE TC-4 FOR SIGN, CONE SPACING AND TAPER LENGTH

GENERAL NOTES

- For hours of darkness, change cones to vertical barricades with steady burn lights.
- This plan MAY NOT apply to signalized or multi-way stop intersections. Consult the local jurisdiction when preparing Traffic Control Plans near these intersections.
- This plan MAY NOT apply when the work areas affect bike lanes, sidewalks, pedestrian access and curved or narrow roadways. Consult the approving agency when preparing the Traffic Control Plan or these areas.
- nothing contained on this drawing shall prevent local jurisdictions from modifying, changing or adopting new specifications deemed necessary. Criteria for position, location and use of Traffic Control Devices is solely for the purpose of guidance to assist in the set up of the Traffic Control Plans.
- TC-5 is required for all Traffic Control Plans.

SUBMITTED BY:

NAME _____
 COMPANY _____
 ADDRESS _____
 PHONE _____

DRAWING NUMBER
 TC-39