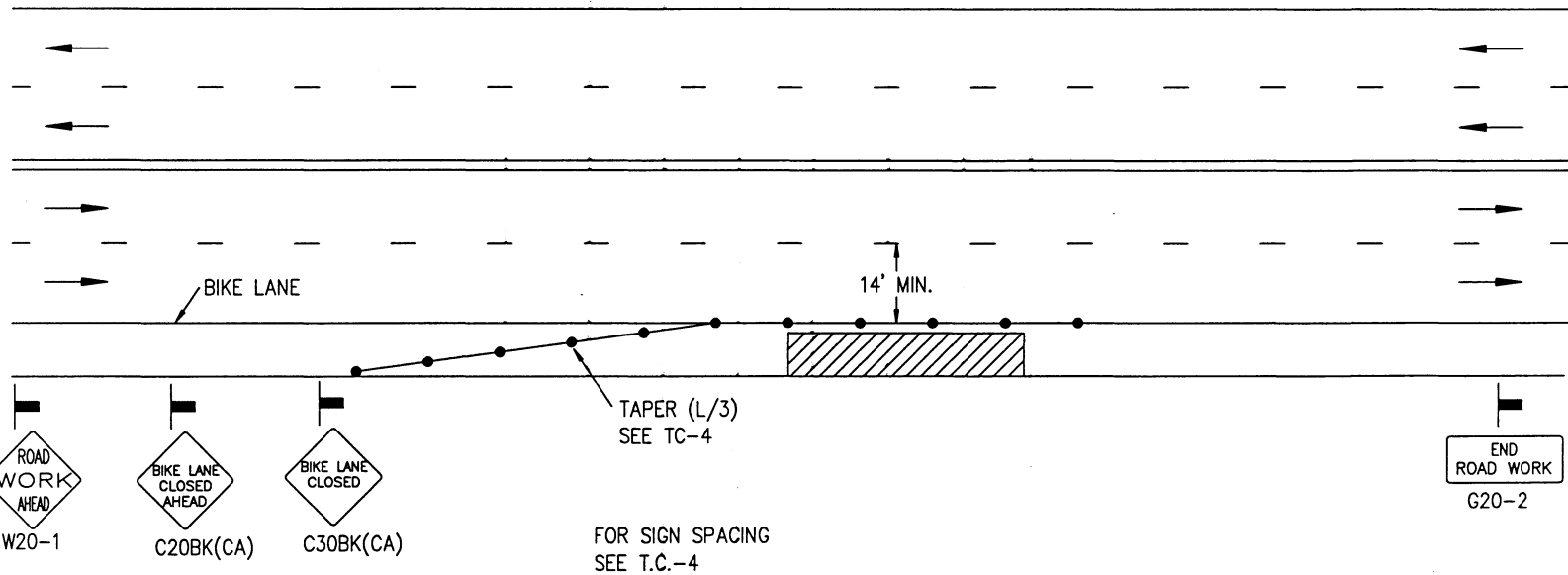


DRAWING NUMBER TC-40

SIDE OF ROAD WORK AREA  
BIKE LANE CLOSURE

APPENDIX "A"  
SAN DIEGO REGIONAL STANDARD



LEGEND

- CONE    †† BARRICADE    ■ FLAGGER    ▬ SIGN    ◻ FLASHING ARROW SIGN    ▨ WORK AREA    ⇄ TRAFFIC DIRECTION

AGENCY ENGINEER'S COMMENTS

\_\_\_\_\_  
 \_\_\_\_\_  
 \_\_\_\_\_  
 \_\_\_\_\_  
 \_\_\_\_\_

POSTED SPEED LIMIT	APPROACH SPEED	TAPER LENGTH	SPACING OF CONES	SIGN SPACING

SEE TC-4 FOR SIGN, CONE SPACING AND TAPER LENGTH

GENERAL NOTES

For hours of darkness, change cones to vertical barricades with steady burn lights.  
 This plan DOES NOT apply to signalized or multi-way stop intersections. Consult the local jurisdiction when preparing Traffic Control Plans near these intersections.  
 This plan MAY NOT apply when the work areas affect bike lanes, sidewalks, pedestrian access and curved or narrow roadways. Consult the approving agency when preparing the Traffic Control Plan or these areas.  
 Nothing contained on this drawing shall prevent local jurisdictions from modifying, changing or adopting new specifications deemed necessary. Criteria for position, location and use of Traffic Control Devices is solely for the purpose of guidance to assist in the set up of the Traffic Control Plans.  
 TC-5 is required for all Traffic Control Plans.

SUBMITTED BY:

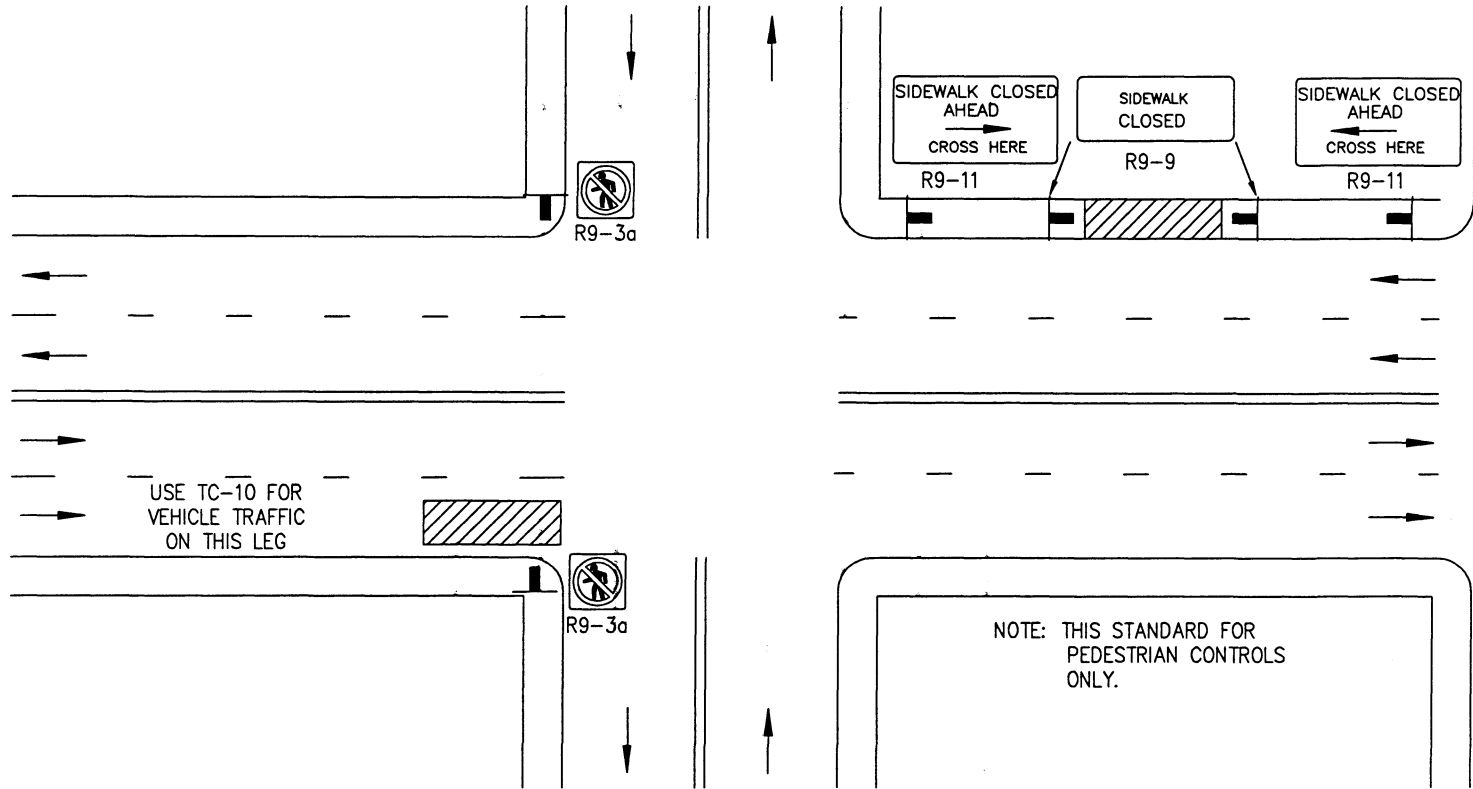
NAME \_\_\_\_\_  
 COMPANY \_\_\_\_\_  
 ADDRESS \_\_\_\_\_  
 PHONE \_\_\_\_\_

Revision	By	Approved	Date
ORIGINAL	CRH	<i>[Signature]</i>	4/27/06

AGENCY USE

APPLICANT USE

Revision	By	Approved	Date
DRAWING CRH			4/06
ORIGINAL			4/27/06



USE TC-10 FOR  
VEHICLE TRAFFIC  
ON THIS LEG

NOTE: THIS STANDARD FOR  
PEDESTRIAN CONTROLS  
ONLY.

**LEGEND**

- CONE
- ++ BARRICADE
- FLAGGER
- ▬ SIGN
- ▧ FLASHING ARROW SIGN
- ▨ WORK AREA
- TRAFFIC DIRECTION

**AGENCY ENGINEER'S COMMENTS**

---

---

---

---

---

---

---

---

POSTED SPEED LIMIT	APPROACH SPEED	TAPER LENGTH	SPACING OF CONES	SIGN SPACING

SEE TC-4 FOR  
SIGN, CONE  
SPACING AND  
TAPER LENGTH

**GENERAL NOTES**

- For hours of darkness, change cones to vertical barricades with steady burn lights.
- This plan DOES NOT apply to signalized or multi-way stop intersections. Consult the local jurisdiction when preparing Traffic Control Plans near these intersections.
- This plan MAY NOT apply when the work areas affect bike lanes, sidewalks, pedestrian access and curved or narrow roadways. Consult the approving agency when preparing the Traffic Control Plan or these areas.
- nothing contained on this drawing shall prevent local jurisdictions from modifying, changing or adopting new specifications deemed necessary. Criteria for position, location and use of Traffic Control Devices is solely for the purpose of guidance to assist in the set up of the Traffic Control Plans.
- TC-5 is required for all Traffic Control Plans.

AGENCY USE

APPLICANT USE

SUBMITTED BY:

NAME \_\_\_\_\_

COMPANY \_\_\_\_\_

ADDRESS \_\_\_\_\_

PHONE \_\_\_\_\_

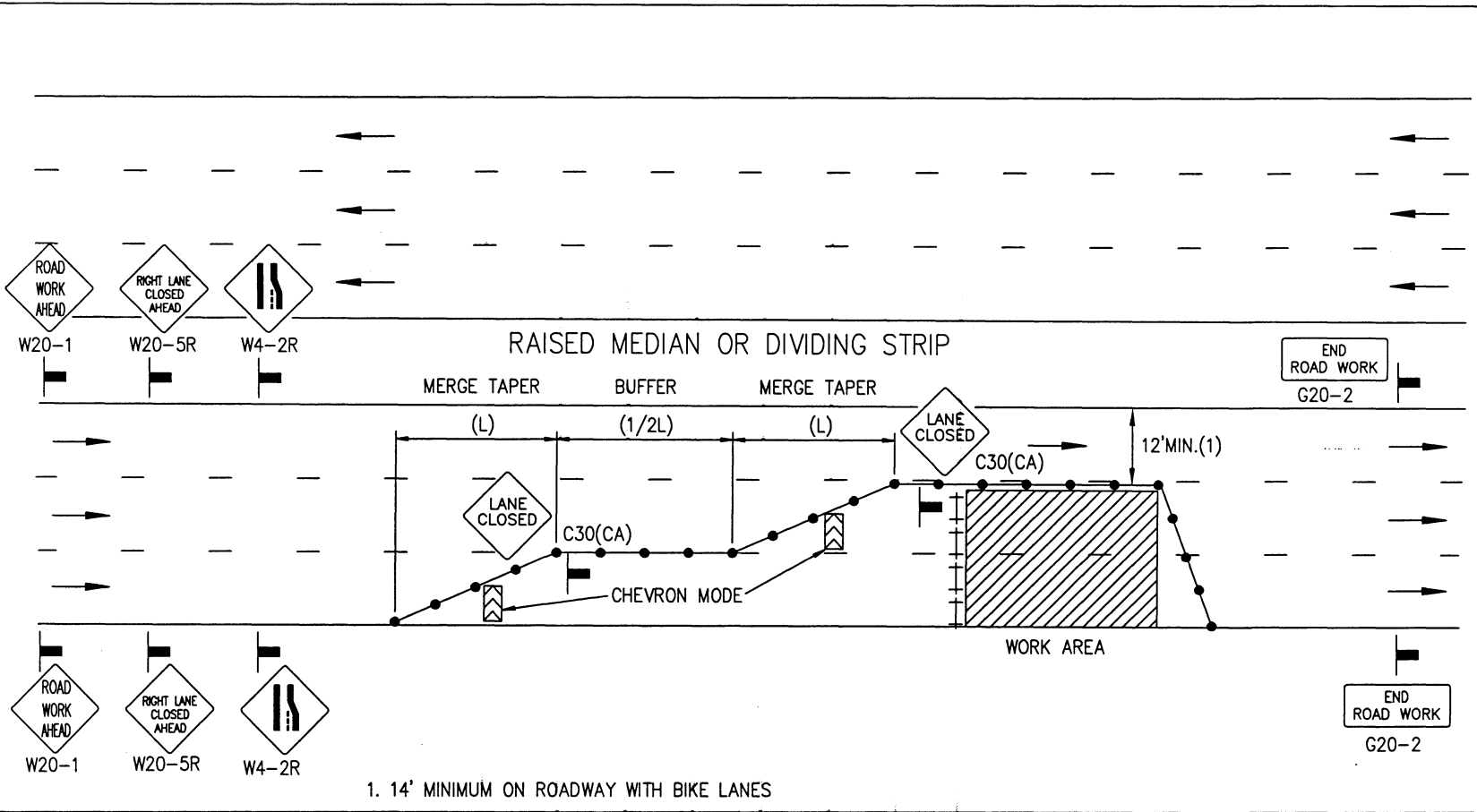
APPENDIX "A"  
SAN DIEGO REGIONAL STANDARD  
SIDE OF ROAD WORK AREA  
TYPICAL PEDESTRIAN CONTROL SIGNS

DRAWING  
NUMBER  
TC-41

DRAWING NUMBER  
TC-42

SIDE OF ROAD WORK AREA  
MULTILANE ROADWAY WITH RAISED MEDIAN

APPENDIX "A"  
SAN DIEGO REGIONAL STANDARD



1. 14' MINIMUM ON ROADWAY WITH BIKE LANES

LEGEND

- CONE    †† BARRICADE    ■ FLAGGER    ▬ SIGN    ▨ FLASHING ARROW SIGN    ▨ WORK AREA    ⇄ TRAFFIC DIRECTION

AGENCY ENGINEER'S COMMENTS

\_\_\_\_\_

\_\_\_\_\_

\_\_\_\_\_

\_\_\_\_\_

\_\_\_\_\_

\_\_\_\_\_

POSTED SPEED LIMIT	APPROACH SPEED	TAPER LENGTH	SPACING OF CONES	SIGN SPACING

SEE TC-4 FOR SIGN, CONE SPACING AND TAPER LENGTH

GENERAL NOTES

For hours of darkness, change cones to vertical barricades with steady burn lights.

This plan DOES NOT apply to signalized or multi-way stop intersections. Consult the local jurisdiction when preparing Traffic Control Plans near these intersections.

This plan MAY NOT apply when the work areas affect bike lanes, sidewalks, pedestrian access and curved or narrow roadways. Consult the approving agency when preparing the Traffic Control Plan or these areas.

nothing contained on this drawing shall prevent local jurisdictions from modifying, changing or adopting new specifications deemed necessary. Criteria for position, location and use of Traffic Control Devices is solely for the purpose of guidance to assist in the set up of the Traffic Control Plans.

TC-5 is required for all Traffic Control Plans.

SUBMITTED BY:

NAME \_\_\_\_\_

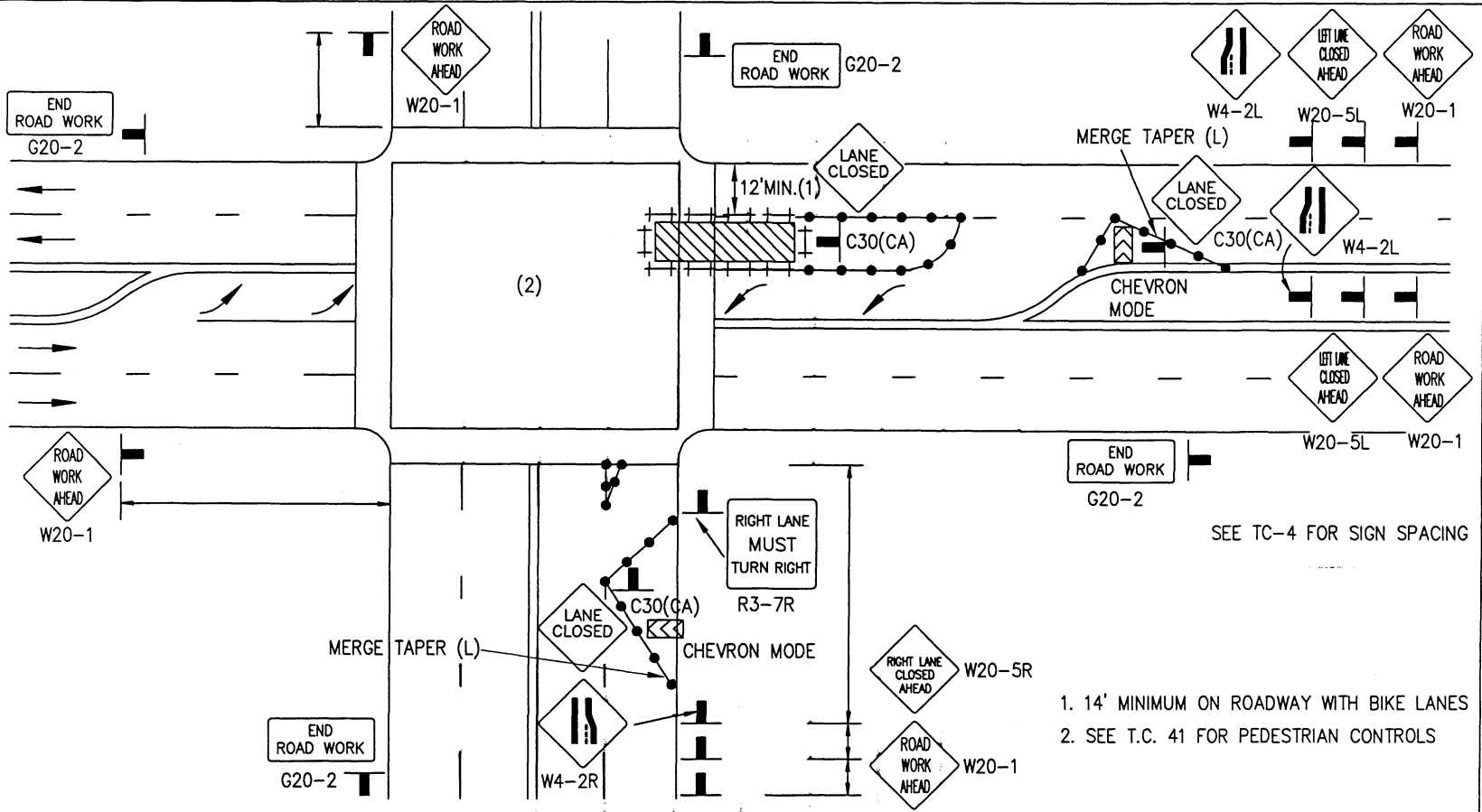
COMPANY \_\_\_\_\_

ADDRESS \_\_\_\_\_

PHONE \_\_\_\_\_

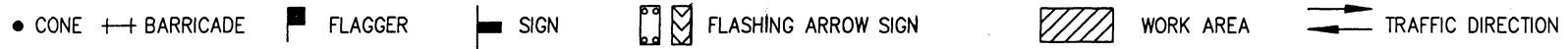
Revision	By	Approved	Date
DRAWING CRH			4/06
ORIGINAL			4/27/06

Revision	By	Approved	Date
DRAWING CRH			4/06
ORIGINAL			4/27/06



1. 14' MINIMUM ON ROADWAY WITH BIKE LANES
2. SEE T.C. 41 FOR PEDESTRIAN CONTROLS

**LEGEND**



**AGENCY ENGINEER'S COMMENTS**

\_\_\_\_\_

\_\_\_\_\_

\_\_\_\_\_

\_\_\_\_\_

\_\_\_\_\_

POSTED SPEED LIMIT	APPROACH SPEED	TAPER LENGTH	SPACING OF CONES	SIGN SPACING

SEE TC-4 FOR SIGN, CONE SPACING AND TAPER LENGTH

**GENERAL NOTES**

For hours of darkness, change cones to vertical barricades with steady burn lights.

This plan MAY NOT apply to signalized or multi-way stop intersections. Consult the local jurisdiction when preparing Traffic Control Plans near these intersections.

This plan MAY NOT apply when the work areas affect bike lanes, sidewalks, pedestrian access and curved or narrow roadways. Consult the approving agency when preparing the Traffic Control Plan or these areas.

nothing contained on this drawing shall prevent local jurisdictions from modifying, changing or adopting new specifications deemed necessary. Criteria for position, location and use of Traffic Control Devices is solely for the purpose of guidance to assist in the set up of the Traffic Control Plans.

TC-5 is required for all Traffic Control Plans.

AGENCY USE

APPLICANT USE

SUBMITTED BY:

NAME \_\_\_\_\_

COMPANY \_\_\_\_\_

ADDRESS \_\_\_\_\_

PHONE \_\_\_\_\_

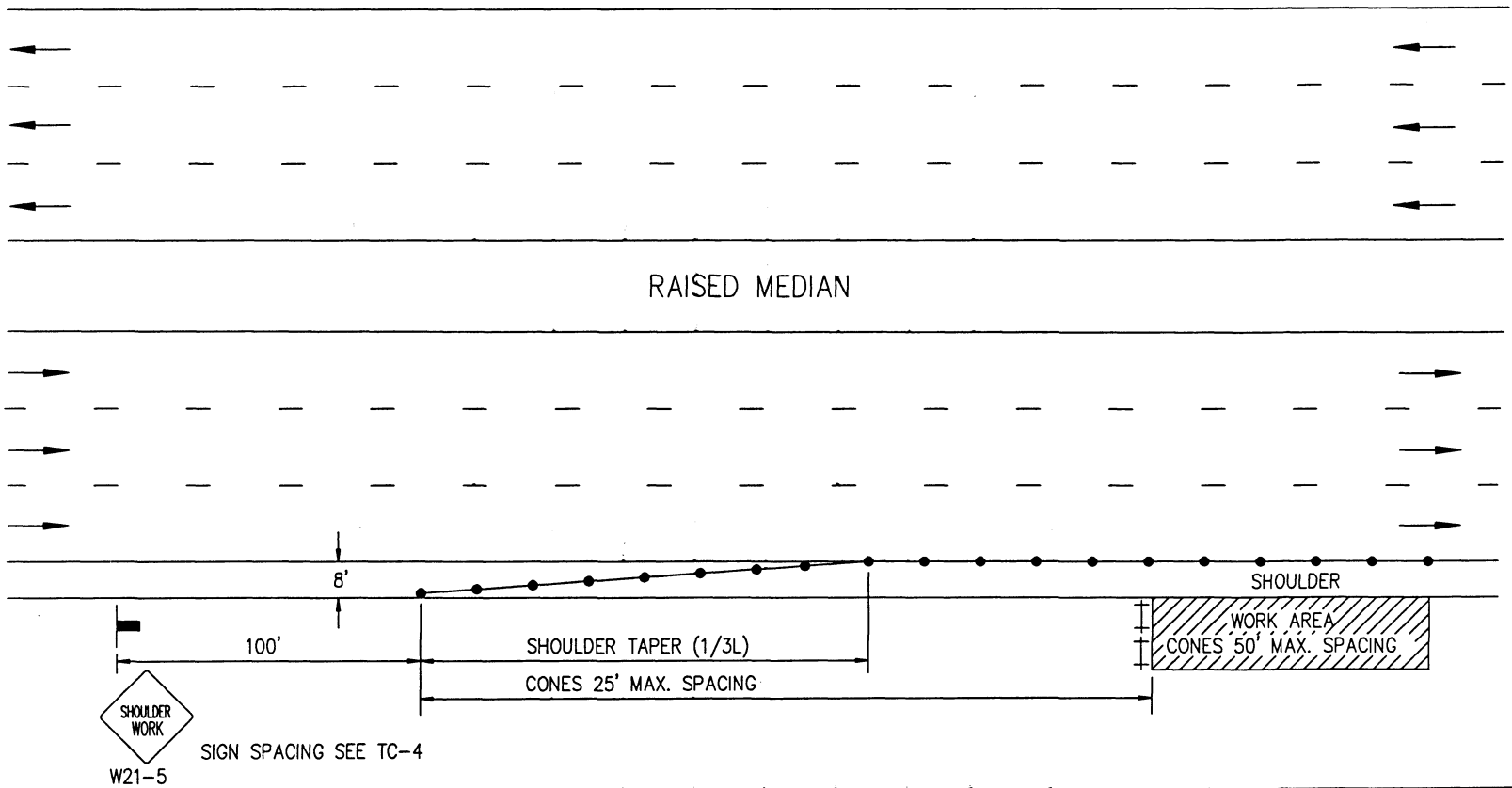
APPENDIX "A"  
SAN DIEGO REGIONAL STANDARD  
WORK WITHIN INTERSECTION  
RIGHT LANE / LEFT LANE

DRAWING NUMBER  
TC-43

DRAWING NUMBER TC-44

TYPICAL SHOULDER CLOSURE  
MULTILANE ROADWAY WITH RAISED MEDIAN

APPENDIX "A"  
SAN DIEGO REGIONAL STANDARD



SIGN SPACING SEE TC-4

LEGEND

- CONE
- ++ BARRICADE
- FLAGGER
- SIGN
- ◻ FLASHING ARROW SIGN
- ▨ WORK AREA
- TRAFFIC DIRECTION

AGENCY ENGINEER'S COMMENTS

\_\_\_\_\_  
 \_\_\_\_\_  
 \_\_\_\_\_  
 \_\_\_\_\_  
 \_\_\_\_\_

POSTED SPEED LIMIT	APPROACH SPEED	TAPER LENGTH	SPACING OF CONES	SIGN SPACING

SEE TC-4 FOR SIGN, CONE SPACING AND TAPER LENGTH

GENERAL NOTES

For hours of darkness, change cones to vertical barricades with steady burn lights.

This plan DOES NOT apply to signalized or multi-way stop intersections. Consult the local jurisdiction when preparing Traffic Control Plans near these intersections.

This plan MAY NOT apply when the work areas affect bike lanes, sidewalks, pedestrian access and curved or narrow roadways. Consult the approving agency when preparing the Traffic Control Plan or these areas.

nothing contained on this drawing shall prevent local jurisdictions from modifying, changing or adopting new specifications deemed necessary. Criteria for position, location and use of Traffic Control Devices is solely for the purpose of guidance to assist in the set up of the Traffic Control Plans.

TC-5 is required for all Traffic Control Plans.

SUBMITTED BY:

NAME \_\_\_\_\_  
 COMPANY \_\_\_\_\_  
 ADDRESS \_\_\_\_\_  
 PHONE \_\_\_\_\_

Revision	By	Approved	Date
DRAWING CRH			4/06
ORIGINAL			4/27/06

AGENCY USE

APPLICANT USE

