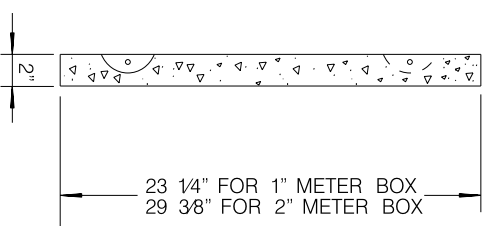


13 3/4" FOR 1" METER BOX
15 1/8" FOR 2" METER BOX



SECTION A-A

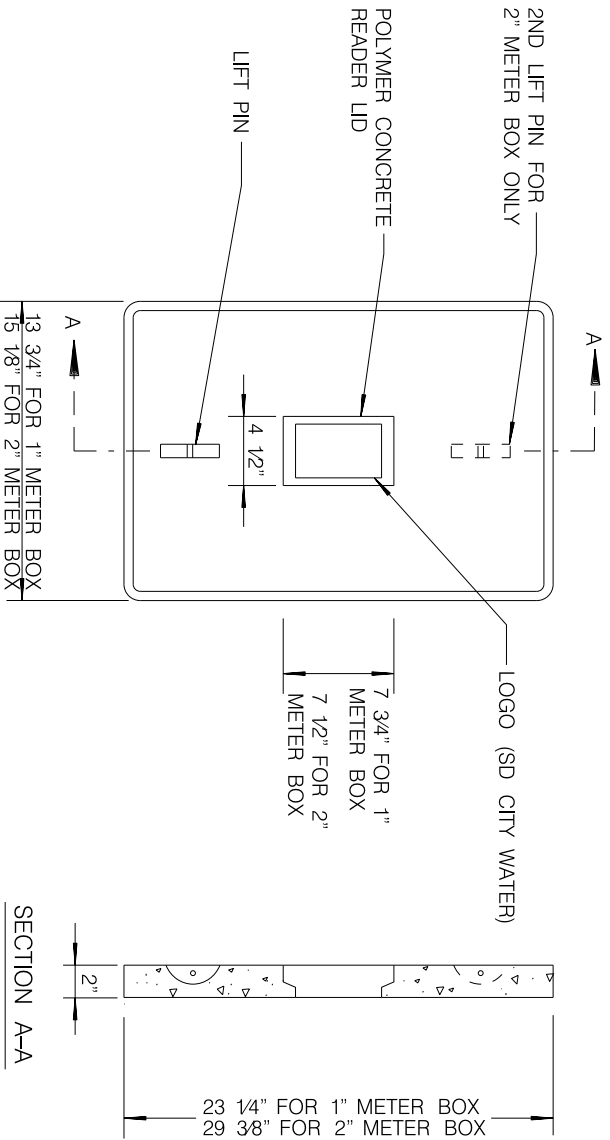
SOLID COVER FOR TRAVELED WAY

- NOTES:
1. LID SHALL WITHSTAND AASHTO H-20 (ASTM 857).
 2. LID SHALL HAVE NON-SKID SURFACE.

SHEET 1 OF 2

REVISION	BY	APPROVED	DATE
ORIGINAL	SS	A. OSKOUJ	1203
UPDATED	KA	J. NAGELVOORT	01/12
UPDATED	BB	J. NAGELVOORT	06/14

CITY OF SAN DIEGO – STANDARD DRAWING		RECOMMENDED BY THE CITY OF SAN DIEGO STANDARDS COMMITTEE
METER BOX POLYMER CONCRETE COVER		<i>Atlinger</i> COORDINATOR
DRAWING NUMBER	SDW-136	R.C.E. 56523
		DATE
		6/23/2014



DROP IN COVER (OUTSIDE TRAVELLED WAY)

NOTES:

1. LID SHALL WITHSTAND AASHTO H-10 (ASTM C857-85).
2. LID SHALL HAVE NON-SKID SURFACE.
3. IF LID IS MANUFACTURED BY CDR, READER SHALL BE 6" X 9".

SHEET 2 OF 2

REVISION	BY	APPROVED	DATE	CITY OF SAN DIEGO – STANDARD DRAWING	RECOMMENDED BY THE SAN DIEGO REGIONAL STANDARDS COMMITTEE
ORIGINAL	SS	A. OSKOLI	1203	METER BOX POLYMER CONCRETE COVER	<i>Atunger</i> COORDINATOR R.C.E. 56523 DATE 6/23/2014
UPDATED	KA	J. NAGELVOORT	07/12		
UPDATED	BB	J. NAGELVOORT	06/14		
					DRAWING NUMBER SDW-136