

**NOTES:**

1. ANY BACKFLOW PROTECTING A SERVICE USED FOR HUMAN CONSUMPTION SHALL BE LEAD FREE
2. ALL METER/BACKFLOW INSTALLATIONS SHALL BE APPROVED BY PUBLIC UTILITIES DEPARTMENT
3. SERVICE CONNECTIONS ON WATER MAIN SHALL BE 30" APART
4. INSTALL A CASING INCASED IN CONCRETE WHEN THE DISTANCE BETWEEN THE METER BOX AND THE RISER TO THE BFD EXCEEDS 18". NO CONNECTIONS OF ANY KIND PERMITTED IN THIS AREA.
5. SEE SDW-155 FOR ADDITIONAL INFORMATION

**2-2" METER AND 2" BACKFLOW INSTALLATION WITH SERVICE AND COFFER BOX**

SHEET 1 OF 3

REVISION	BY	APPROVED	DATE
ORIGINAL	KA	J. NAGELVOORT	03/13

CITY OF SAN DIEGO - STANDARD DRAWING

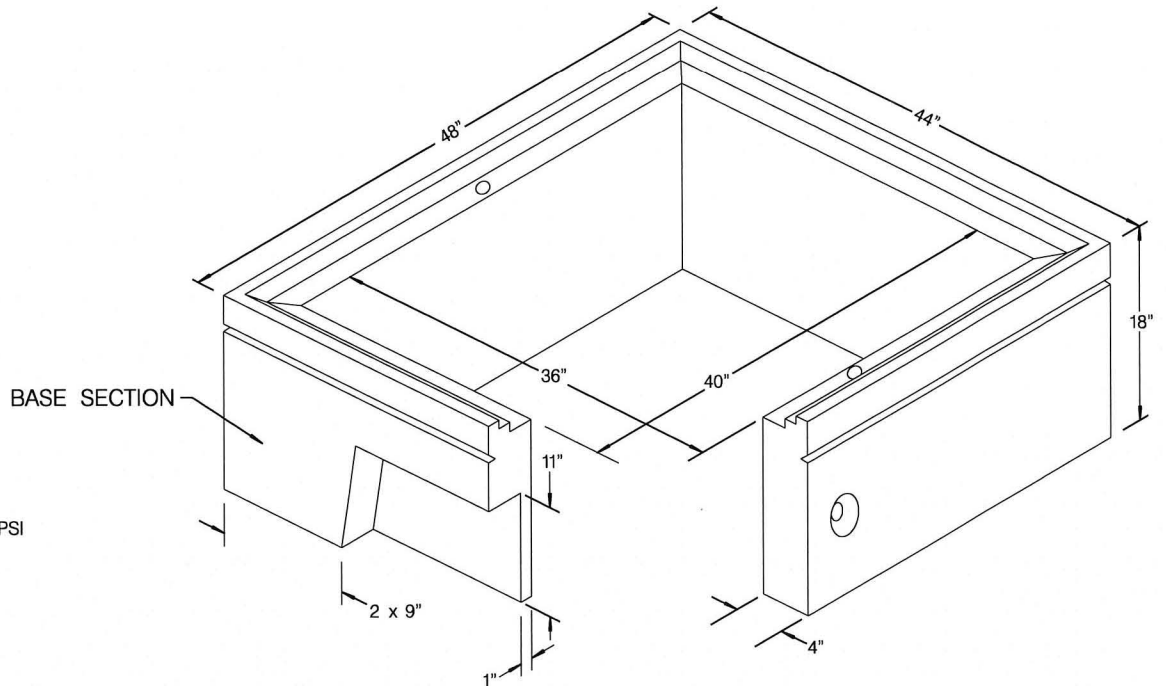
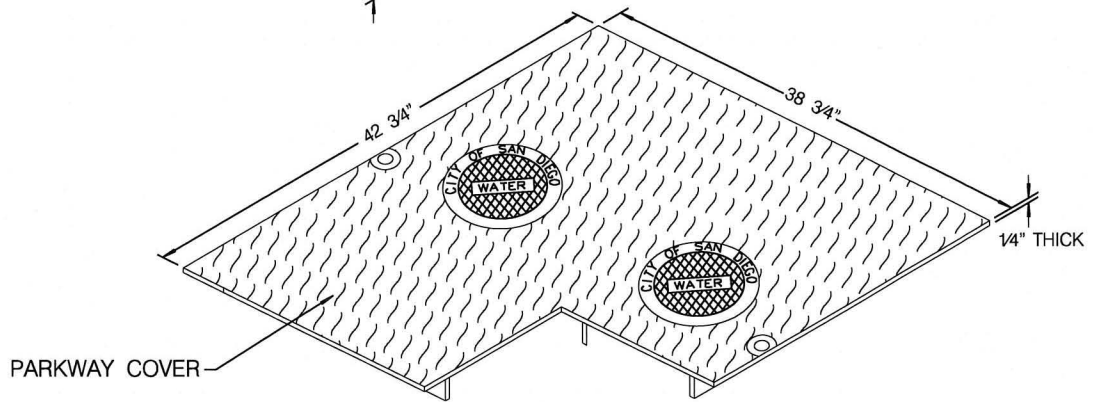
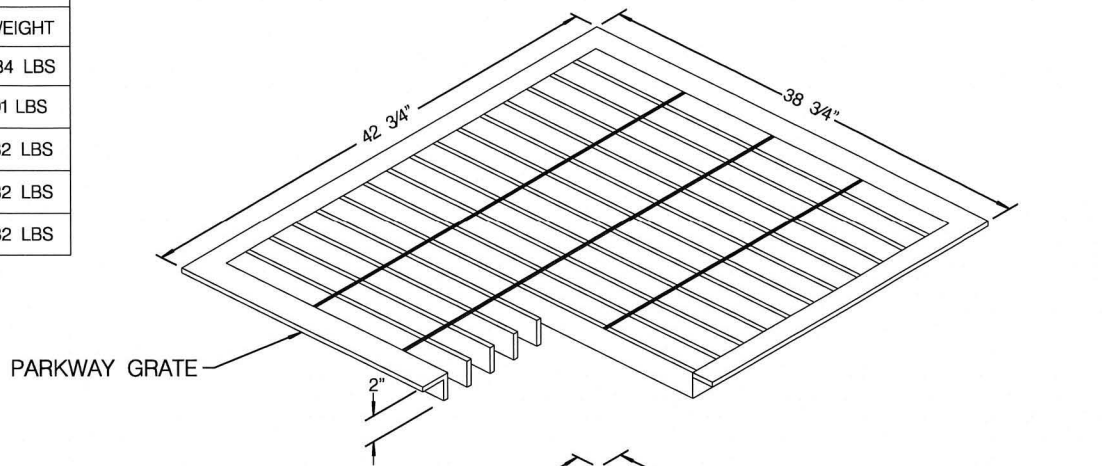
RECOMMENDED BY THE CITY OF SAN DIEGO STANDARDS COMMITTEE

*J. Nagelvoort* 30113  
 COORDINATOR R.C.E. 65271 DATE

**2" METER, BACKFLOW AND COFFER BOX**

DRAWING NUMBER **SDW-114**

CONFIGURATION BLOCK		
DESCRIPTIONS	HEIGHT	WEIGHT
METER BOX	18"	884 LBS
PARKWAY COVER STEEL	2"	191 LBS
PARKWAY COVER STEEL GALVANIZED	2"	182 LBS
PARKWAY COVER STEEL W/HOLES	2"	182 LBS
PARKWAY GRATE	2"	182 LBS



**NOTE:**

1. CONCRETE BASE: 5000 PSI

**36" x 40" METER BOX PARKWAY**

REVISION	BY	APPROVED	DATE
ORIGINAL	KA	J. NAGELVOORT	03/13

CITY OF SAN DIEGO - STANDARD DRAWING

RECOMMENDED BY THE CITY OF SAN DIEGO  
STANDARDS COMMITTEE

*D. Hadzi*

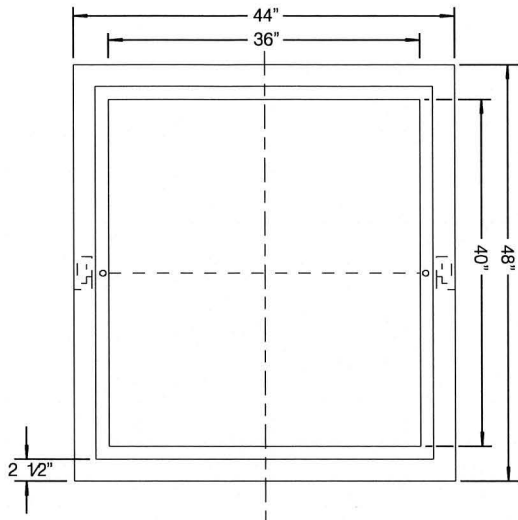
3/01/13

COORDINATOR R.C.E. 65271 DATE

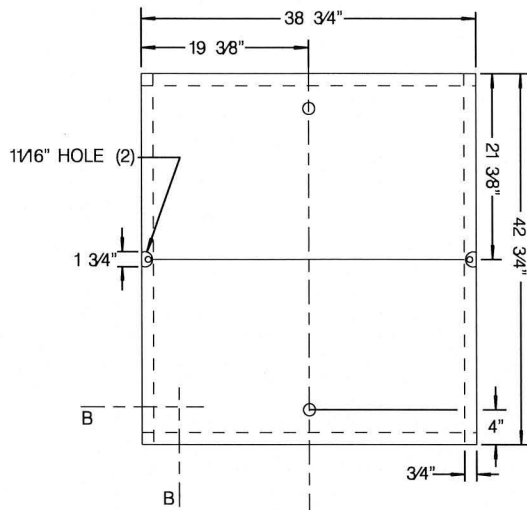
**2" METER, BACKFLOW AND COFFER BOX**

DRAWING  
NUMBER

**SDW-114**

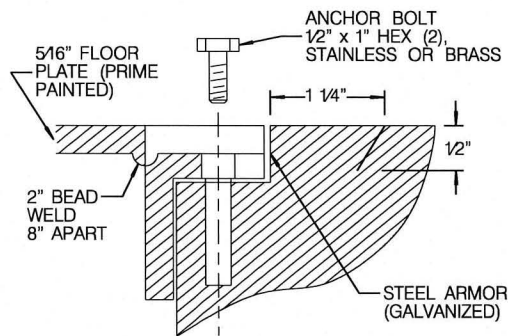
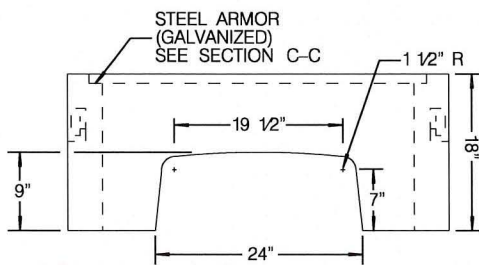


**BOX - TOP VIEW**

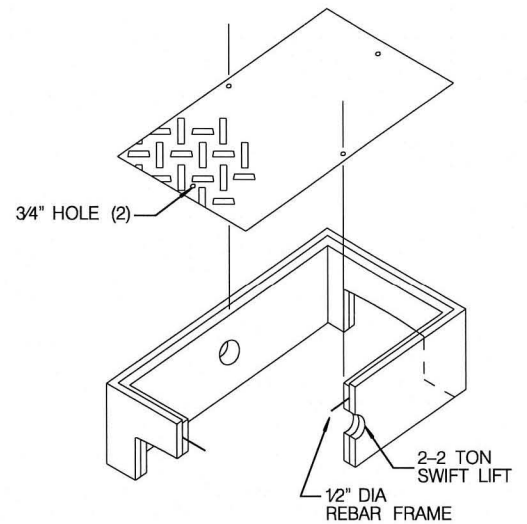


**COVER - TOP VIEW**

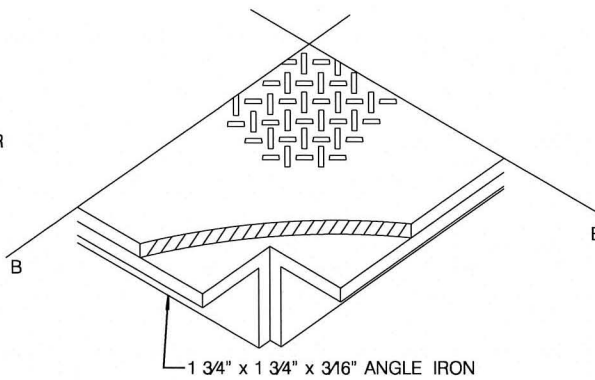
**BOX - END VIEW**



**CROSS-SECTION: COVER, BOX & ANCHOR**



**REBAR FRAME**



**SECTION B-B OF COVER**

REVISION	BY	APPROVED	DATE
ORIGINAL	KA	J. NAGELVOORT	03/13

CITY OF SAN DIEGO - STANDARD DRAWING

**2" METER, BACKFLOW AND COFFER BOX**

RECOMMENDED BY THE CITY OF SAN DIEGO STANDARDS COMMITTEE

*J. Nagelvoort* 3/01/13

COORDINATOR R.C.E. 65271 DATE

DRAWING NUMBER **SDW-114**