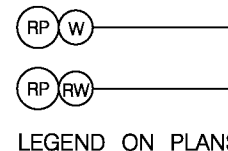


NOTES:

- 1) INSTALL WARNING/IDENTIFICATION TAPE.
- 2) LOCATE BACKFLOW PREVENTION DEVICE (BPD) IN SUCH A MANNER THAT WILL ALLOW THE DEVICE TO BE READILY ACCESSIBLE FOR INSPECTION AND REPAIR.
- 3) STRAINERS SHALL NOT BE INSTALLED PRIOR TO THE FIRST SHUT-OFF VALVE.
- 4) ALL ABOVE GROUND PIPING, UNIONS, ELBOWS, & NIPPLES SHALL BE SOLDERED OR THREADED BRASS.
- 5) INSTALL A CASING ENCASED IN CONCRETE WHEN THE DISTANCE BETWEEN THE METER BOX AND THE RISER TO THE BPD EXCEEDS 18". NO CONNECTIONS OF ANY KIND PERMITTED IN THIS AREA.
- 6) INSTALL A PRESSURE REDUCING VALVE UPSTREAM OF THE FIRST 90° ELL WHEN SYSTEM PRESSURE EXCEEDS 150 PSI.
- 7) TESTING SHALL BE CONDUCTED IN ACCORDANCE WITH SPECIFICATIONS PRIOR TO ACCEPTANCE.
- 8) BACKFLOW PREVENTION DEVICE & APPURTENANCES INSTALLED FOR THE USE OF RECYCLED WATER SHALL BE IDENTIFIED AS DESCRIBED IN SPECIFICATIONS.
- 9) LOCATION MUST BE APPROVED BY PUBLIC UTILITIES DEPARTMENT, CROSS CONNECTION CONTROL UNIT AND SHOWN ON THE PLANS.
- 10) ALL RISER ELBOWS AND UNDERGROUND PIPING SHALL BE TYPE (L) OR (M) COPPER, BRASS. PUBLIC UTILITIES DEPARTMENT APPROVED MATERIAL LIST BRASS UNIONS ARE ACCEPTABLE.



ITEM NO	SIZE AND DESCRIPTION	ITEM NO	SIZE AND DESCRIPTION
1	METER BOX & METER ASSEMBLY SEE SDW-149 & SDW-150	8	BALL VALVE "SHUT-OFF"
2	SCH 80 PVC, BRASS OR COPPER PIPE	9	REDUCED PRESSURE BACKFLOW DEVICE
3	CONCRETE THRUST BLOCK SEE SDW-151	10	ENCLOSURE (OPTIONAL)
4	90° BRASS ELL SEE NOTES 4 & 6	11	UNION SEE NOTE 4
5	CONCRETE SLAB, MINIMUM 4" THICK x 18" WIDE	12	PRV SEE NOTES 4 & 6
6	BRASS OR COPPER PIPE SEE NOTE 4		
7	3" LONG NIPPLE SEE NOTE 4		

REVISION	BY	APPROVED	DATE	CITY OF SAN DIEGO - STANDARD DRAWING	RECOMMENDED BY THE CITY OF SAN DIEGO STANDARDS COMMITTEE
ORIGINAL*	KA	J. NAGELVOORT	01/12		<i>H. Hadli</i>
UPDATED	KA	J. NAGELVOORT	12/12	3/4" THRU 2" REDUCED PRESSURE BACKFLOW PREVENTION DEVICE	COORDINATOR R.C.E. 65271 DATE
					DRAWING NUMBER SDW-155