



THE CITY OF SAN DIEGO

# College Grove Redevelopment Project Area FACT SHEET



The City of San Diego's 167-acre College Grove Redevelopment Project Area was adopted in 1986 to revitalize the aging College Grove Shopping Center by using tax increment revenue to finance street-related improvements around the shopping center for better traffic circulation. The Project Area, administered by the City's Redevelopment Department, comprises the 56-acre shopping center on College Avenue and State Route 94, and 111 acres of City land, including Chollas Lake Park and Chollas Landfill. The City-owned Chollas property is identified in the Mid-City Community Plan as a resource-based park that lends itself to development as a traditional large urban park. Some of the future improvements to the area include utility, landscape, park and street improvements, and a traffic signal at the intersection of College Avenue and Livingston Avenue.

In 1998, the City's Redevelopment Agency entered into agreements with Vestar Development Company and Wal-Mart Real Estate Business Trust to redevelop the shopping center with a Wal-Mart, Sam's Club, and Home Base in addition to the Mervyn's and Longs Drugs stores that were already tenants then. Originally called Marketplace at the Grove, the regional mall is now known as College Grove Shopping Center.

## Development Objectives

- Eliminate blighting conditions and prevent the recurrence of blight in and about the Project Area
- Provide appropriate types of commercial uses within the Project Area to meet the commercial needs of the community
- Provide for required community facilities and public services; including recreational facilities
- Provide for the installation and improvement of streets, public utilities, sewer, and water services necessary to the ultimate redevelopment of the Project Area



## Redevelopment Incentives

- Permitting assistance
- Housing programs
- Off-site improvements

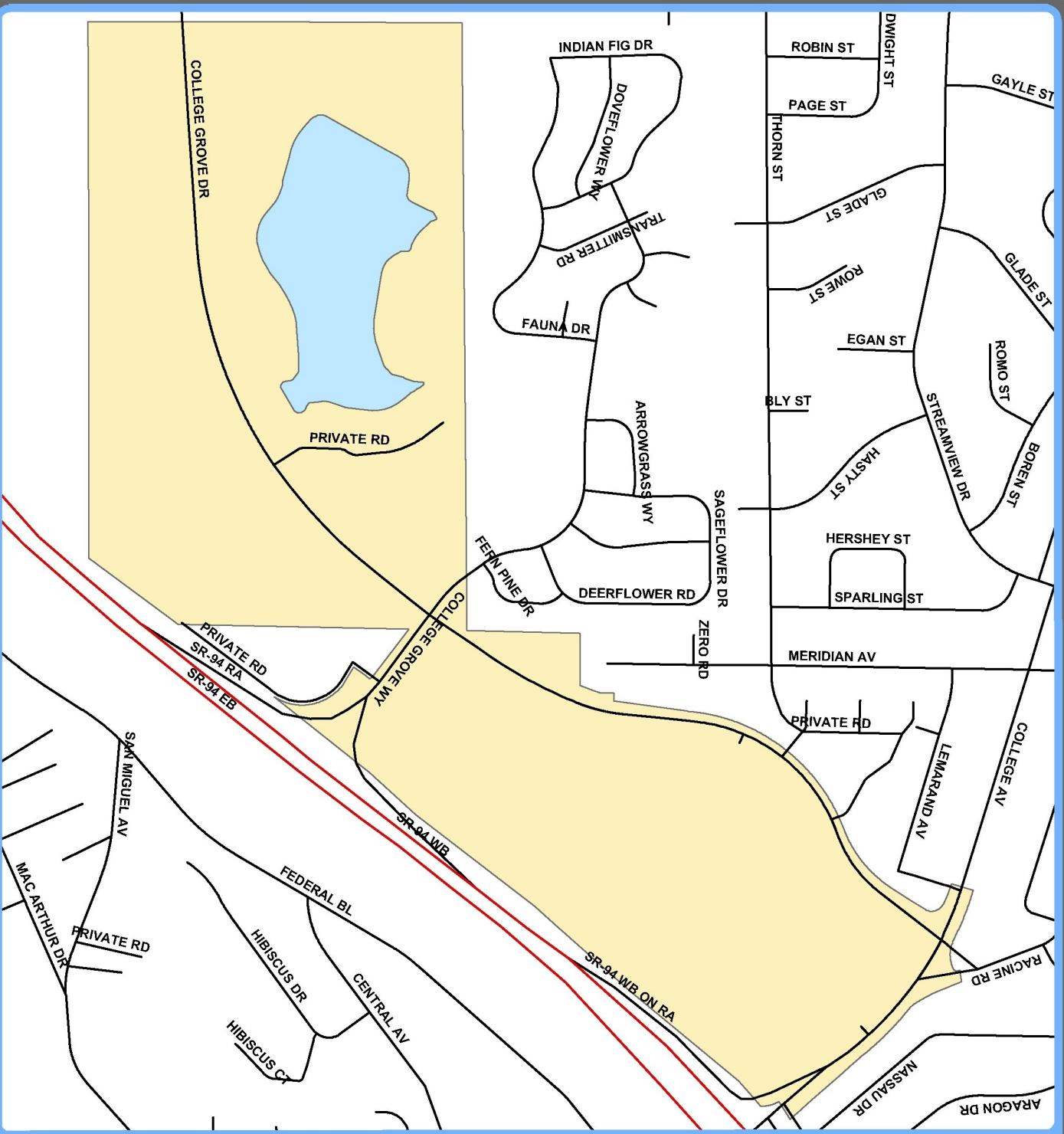
## Future Goals

During the next five years, Redevelopment funding and activities are anticipated to focus on maintaining the College Grove Shopping Center, assisting in the rehabilitation of affordable housing in surrounding neighborhoods, and beginning the process of implementing street improvements on College Avenue and improvements to the Chollas Lake recreational area.

<p><b>Project Area Contact:</b>  Tracy Reed  Redevelopment Project Manager  Tel: (619) 236-6543  E-mail: TReed@sandiego.gov  Website: <a href="http://www.sandiego.gov/redevelopment-agency/collgrov.shtml">www.sandiego.gov/redevelopment-agency/collgrov.shtml</a></p>
--

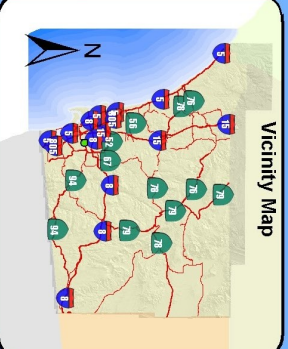
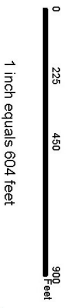
Detailed information on project areas, governing documents and agreements, opportunities for public involvement, and redevelopment incentive programs is available on the City of San Diego Redevelopment Agency website: [www.sandiego.gov/redevelopment-agency](http://www.sandiego.gov/redevelopment-agency).

# # #



# College Grove Redevelopment Area

- FREEMWAY
- HIGHWAY
- Roads
- Water Bodies
- COLLEGE GROVE



**SanGIS**  
We Have San Diego Covered!

Map made exclusively for our client by the San Diego Geographic Information Source  
5489 San Diego, CA 92123  
(619) 574-7000  
[www.sanGIS.org](http://www.sanGIS.org)

For reprints, mapping or additional information please contact SanGIS.

THIS MAP IS PROVIDED BY THE COUNTY OF SAN DIEGO, CALIFORNIA, AND IS NOT A CONTRACT. THE USER ASSUMES ALL LIABILITY FOR ANY DAMAGE TO PERSONS OR PROPERTY ARISING FROM THE USE OF THIS MAP. THE USER ASSUMES ALL LIABILITY FOR ANY DAMAGE TO PERSONS OR PROPERTY ARISING FROM THE USE OF THIS MAP. THE USER ASSUMES ALL LIABILITY FOR ANY DAMAGE TO PERSONS OR PROPERTY ARISING FROM THE USE OF THIS MAP.

This map is copyrighted by SanGIS, Inc. All rights reserved. No part of this map may be reproduced without the written permission of SanGIS, Inc. All rights reserved. No part of this map may be reproduced without the written permission of SanGIS, Inc. All rights reserved. No part of this map may be reproduced without the written permission of SanGIS, Inc. All rights reserved.

**Plot Date: 06/30/08**