

signage

-5 -4 -3 -2 -1 0 1 2 3 4 5

## Signage

**Average Score: .6**



**existing auto oriented stand alone sign**

*image #90*

## Signage

**Average Score: .6**

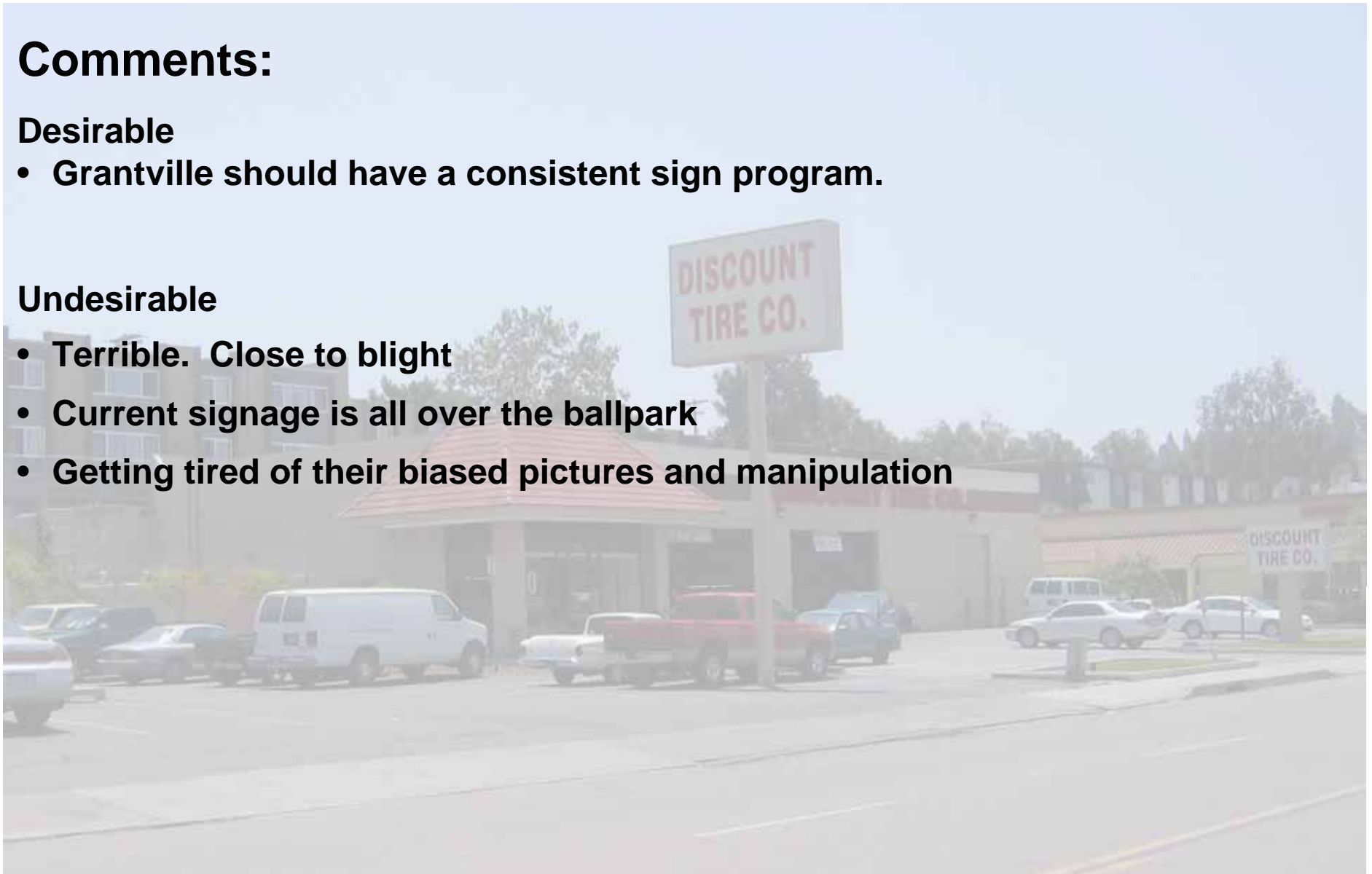
### Comments:

#### Desirable

- Grantville should have a consistent sign program.

#### Undesirable

- Terrible. Close to blight
- Current signage is all over the ballpark
- Getting tired of their biased pictures and manipulation



**existing auto oriented stand alone sign**

*image #90*

# Signage

**Average Score: .5**



auto oriented combined signs

*image #91*

## Signage

**Average Score: .5**

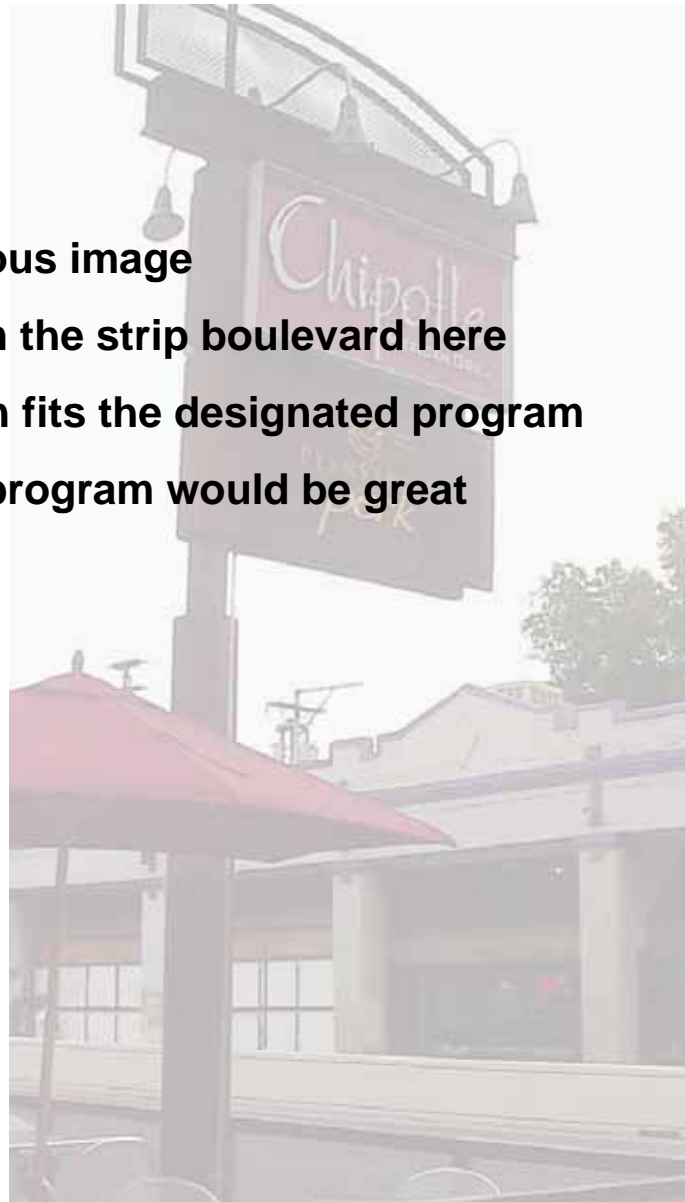
### Comments:

#### Desirable

- Looks better than previous image
- Time to move away from the strip boulevard here
- Okay as long as the sign fits the designated program
- A coordinated signage program would be great

#### Undesirable

- Too cute
- No
- looks better the 90





## Signage

**Average Score: 3.0**



**auto oriented monument sign**

*image #92*

## Signage

**Average Score: 3.0**

### Comments:

#### Desirable

- Necessary but not pretty
- Nicer than previous image
- Looks good. Fits Kaiser's program and has landscaping
- Much more appealing than tall ugly signs
- Much more appealing than tall ugly signs

#### Undesirable



**auto oriented monument sign**

*image #92*



## Signage

**Average Score: 3.9**



**town center sign**

*image #93*



## Signage

**Average Score: 3.9**

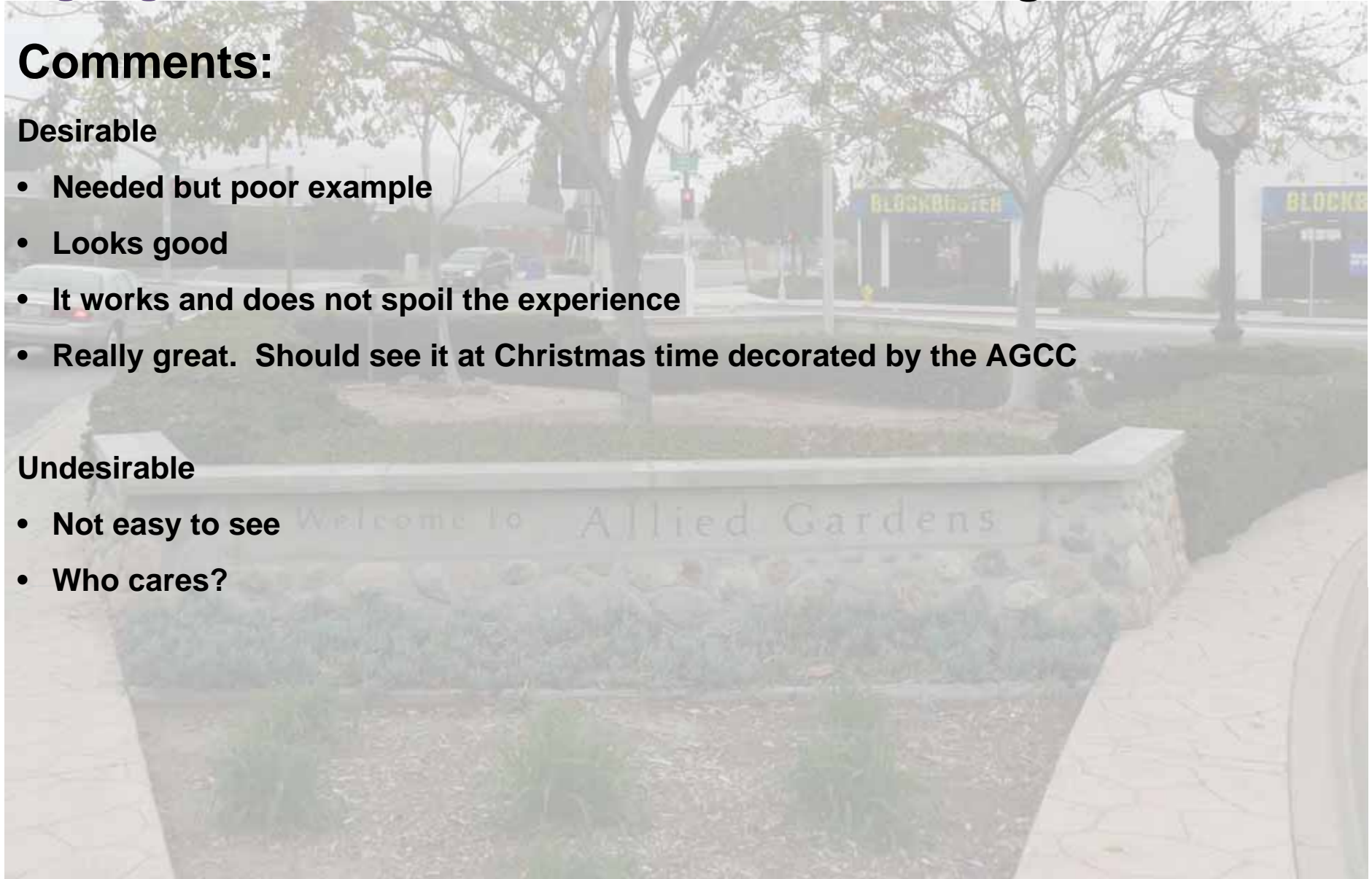
### Comments:

#### Desirable

- Needed but poor example
- Looks good
- It works and does not spoil the experience
- Really great. Should see it at Christmas time decorated by the AGCC

#### Undesirable

- Not easy to see
- Who cares?



# Signage

**Average Score: 4.5**



pedestrian oriented directory

*image #94*

## Signage

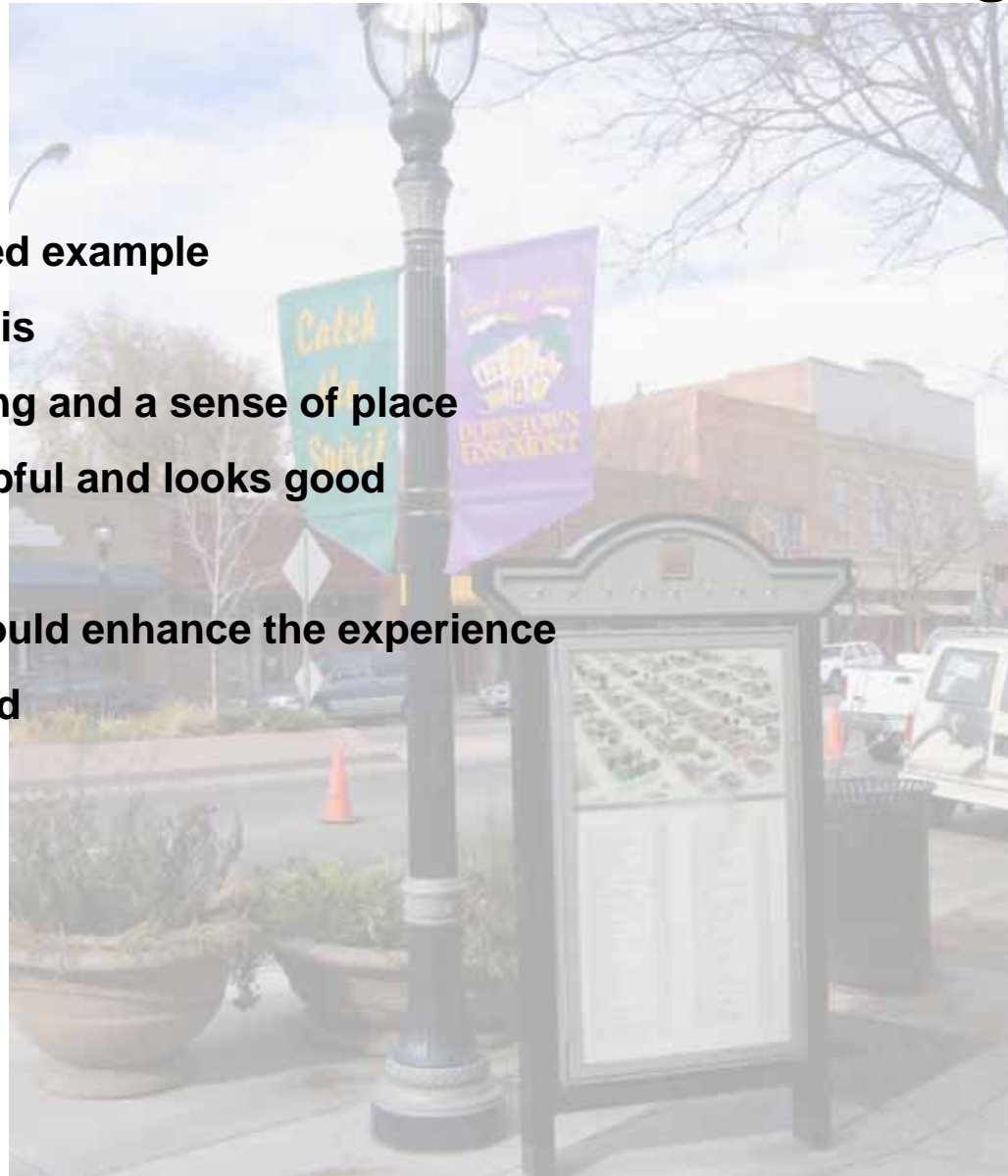
**Average Score: 4.5**

### Comments:

#### Desirable

- Yes, but cluttered example
- Definitely like this
- Promotes walking and a sense of place
- Can be very helpful and looks good
- Great idea
- Well done. It would enhance the experience
- Street lamp good

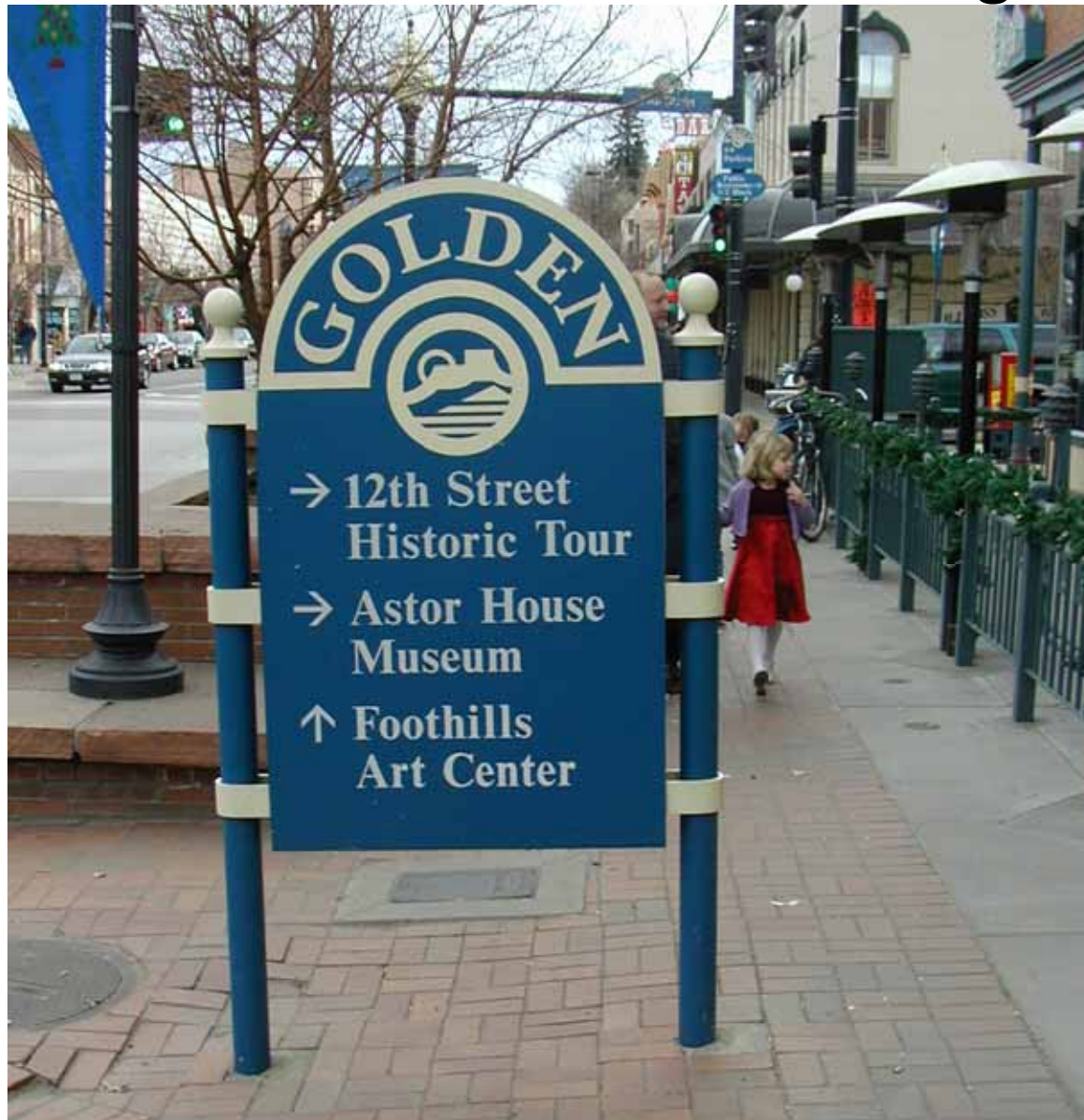
#### Undesirable





## Signage

**Average Score: 3.6**



**pedestrian oriented wayfinding sign**

*image #95*

## Signage

**Average Score: 3.6**

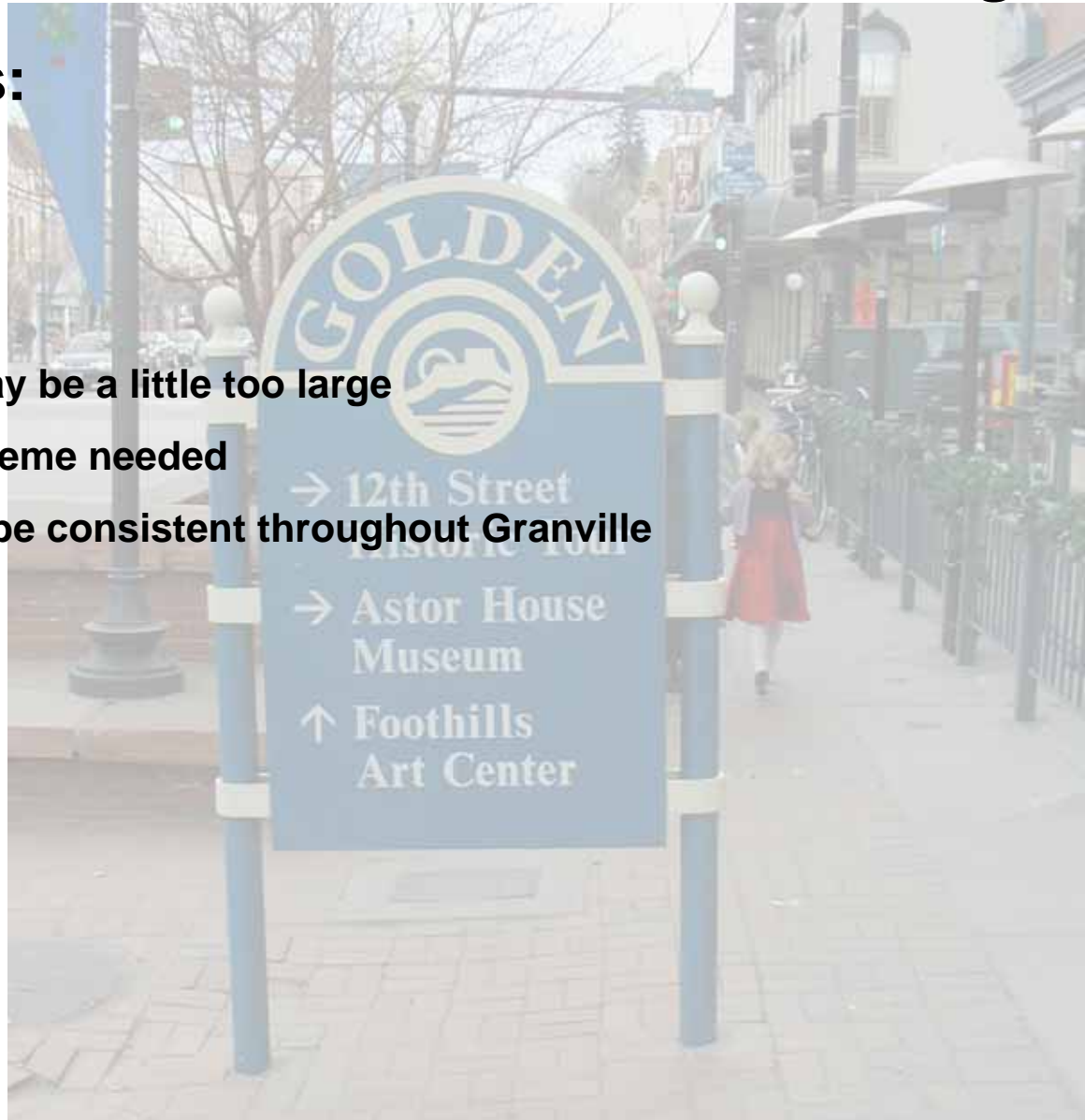
### Comments:

#### Desirable

- Yes
- Good idea
- Okay. but may be a little too large
- Consistent theme needed
- They should be consistent throughout Granville

#### Undesirable

- Very bad.



pedestrian oriented wayfinding sign

*image #95*



parking



-5 -4 -3 -2 -1 0 1 2 3 4 5



# Parking

**Average Score: -.6**



**existing surface lot, abuts sidewalk**

*image #96*

## Parking

**Average Score: -.6**

### Comments:

Desirable

Undesirable

- Pretty ugly huh?
- Unsightly
- Not screened from the street, not well organized
- A major challenge everywhere



**existing surface lot, abuts sidewalk**

*image #96*



# Parking

**Average Score: -.2**



**surface lot screened and buffered with planting**

*image #97*



## Parking

**Average Score: -.2**

### Comments:

#### Desirable

- Looks good, but expensive

#### Undesirable

- Still pretty ugly
- What planting? I just see a sign



**surface lot screened and buffered with planting**

*image #97*

## Parking

**Average Score: -1.0**



**surface lot screened with walls**

*image #98*

# Parking

**Average Score: -1.0**

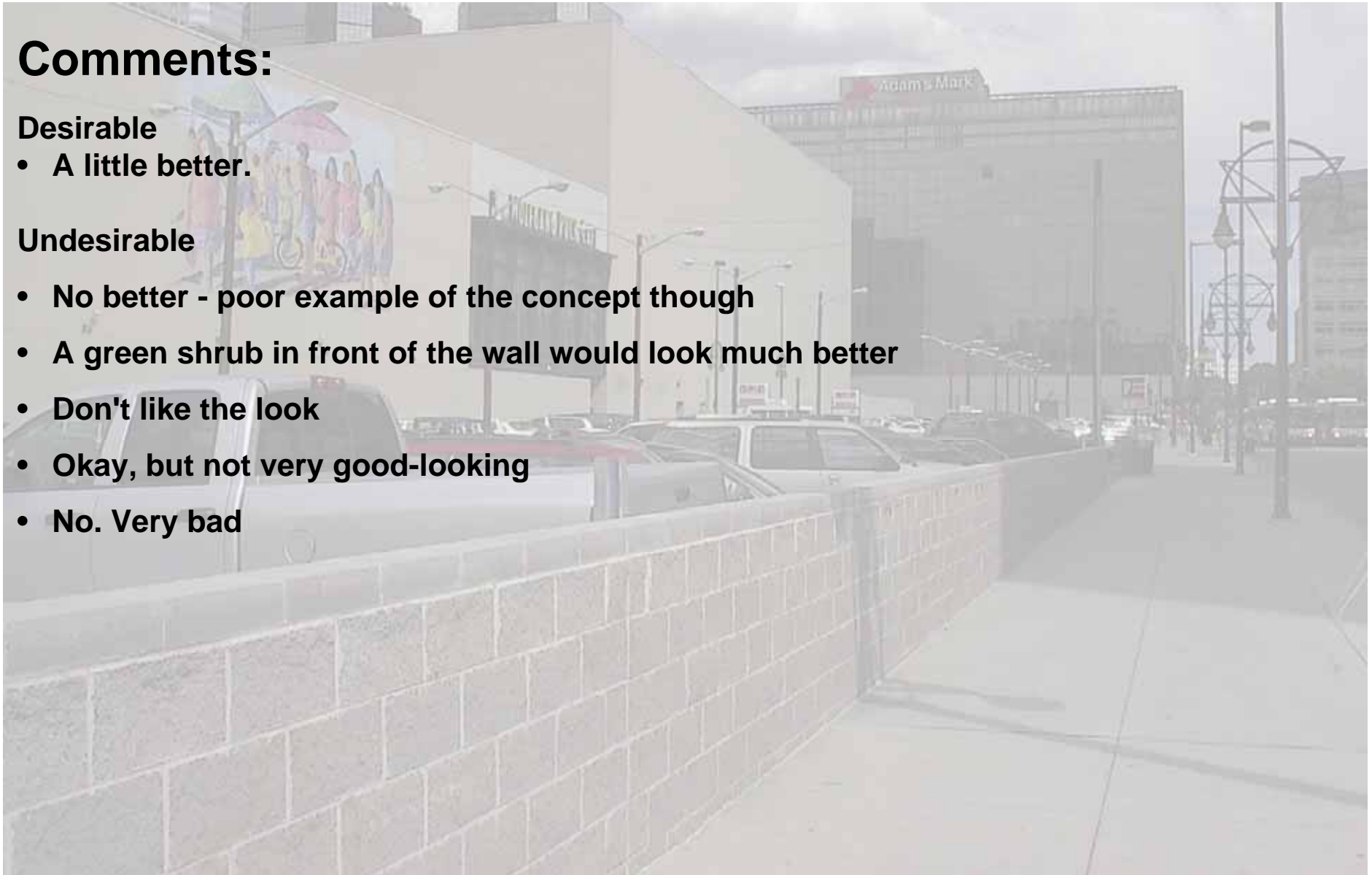
## Comments:

### Desirable

- A little better.

### Undesirable

- No better - poor example of the concept though
- A green shrub in front of the wall would look much better
- Don't like the look
- Okay, but not very good-looking
- No. Very bad



**surface lot screened with walls**

*image #98*



## Parking

**Average Score: 2.1**



**surface lot screened with planting and fencing**

*image #99*

## Parking

**Average Score: 2.1**

### Comments:

#### Desirable

- Better, green helps
- Like this look
- Good technique in improving the look of a simple surface lot
- Well done
- Much better than previous image.

#### Undesirable



**surface lot screened with planting and fencing**

*image #99*



# Parking

**Average Score: 2.8**



**surface lot behind buildings**

*image #100*



## Parking

**Average Score: 2.8**

### Comments:

#### Desirable

- Better yet
- Like this concept
- Good for creating a walkable facade on the front side
- Good way to handle parking
- I totally support parking behind the buildings

#### Undesirable

- Planner's fantasy. Retail doesn't like their kind.



**surface lot behind buildings**

*image #100*

# Parking

**Average Score: 3.1**



**surface lot with solar panels**

*image #101*

## Parking

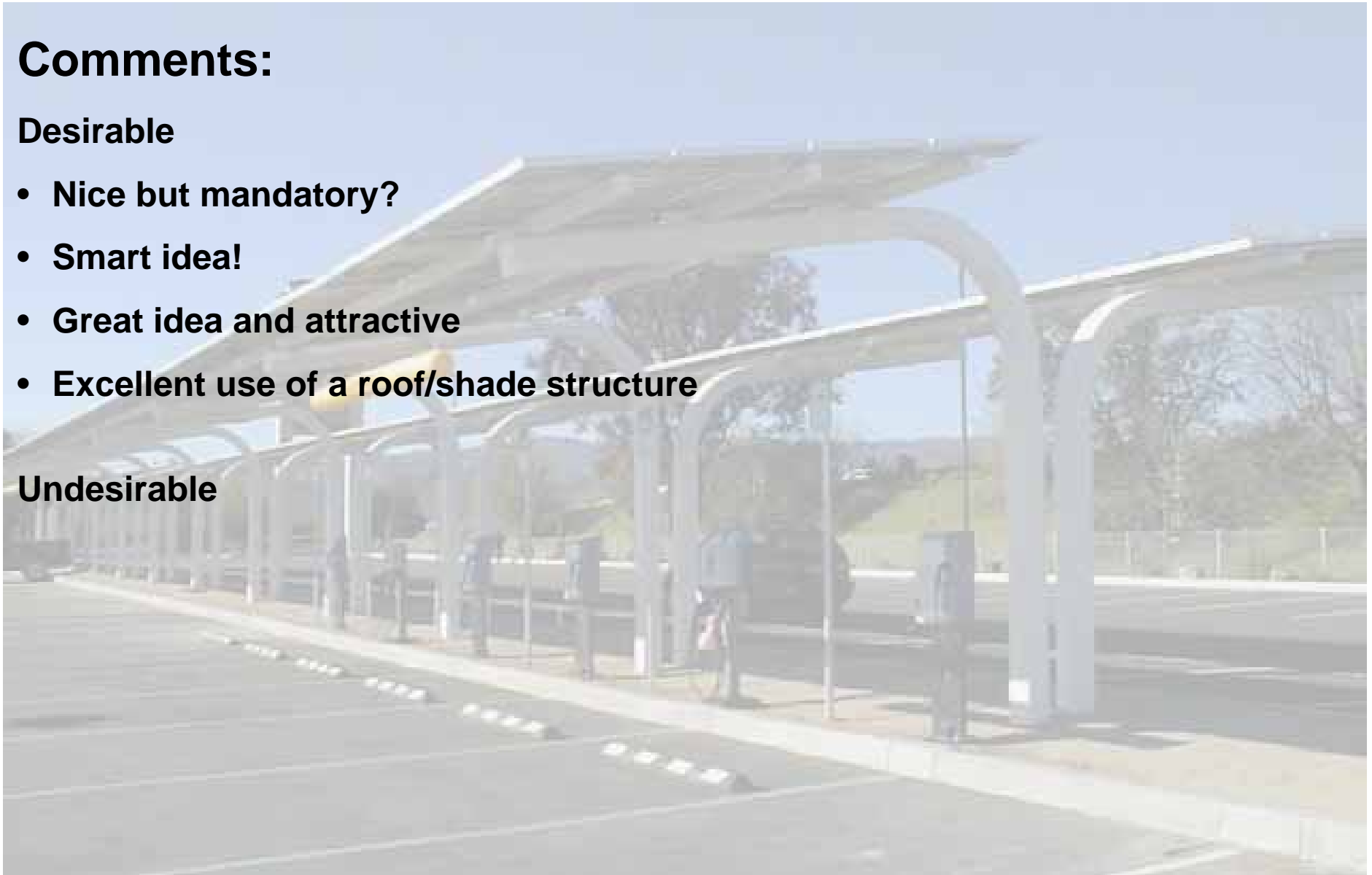
**Average Score: 3.1**

### Comments:

#### Desirable

- Nice but mandatory?
- Smart idea!
- Great idea and attractive
- Excellent use of a roof/shade structure

#### Undesirable



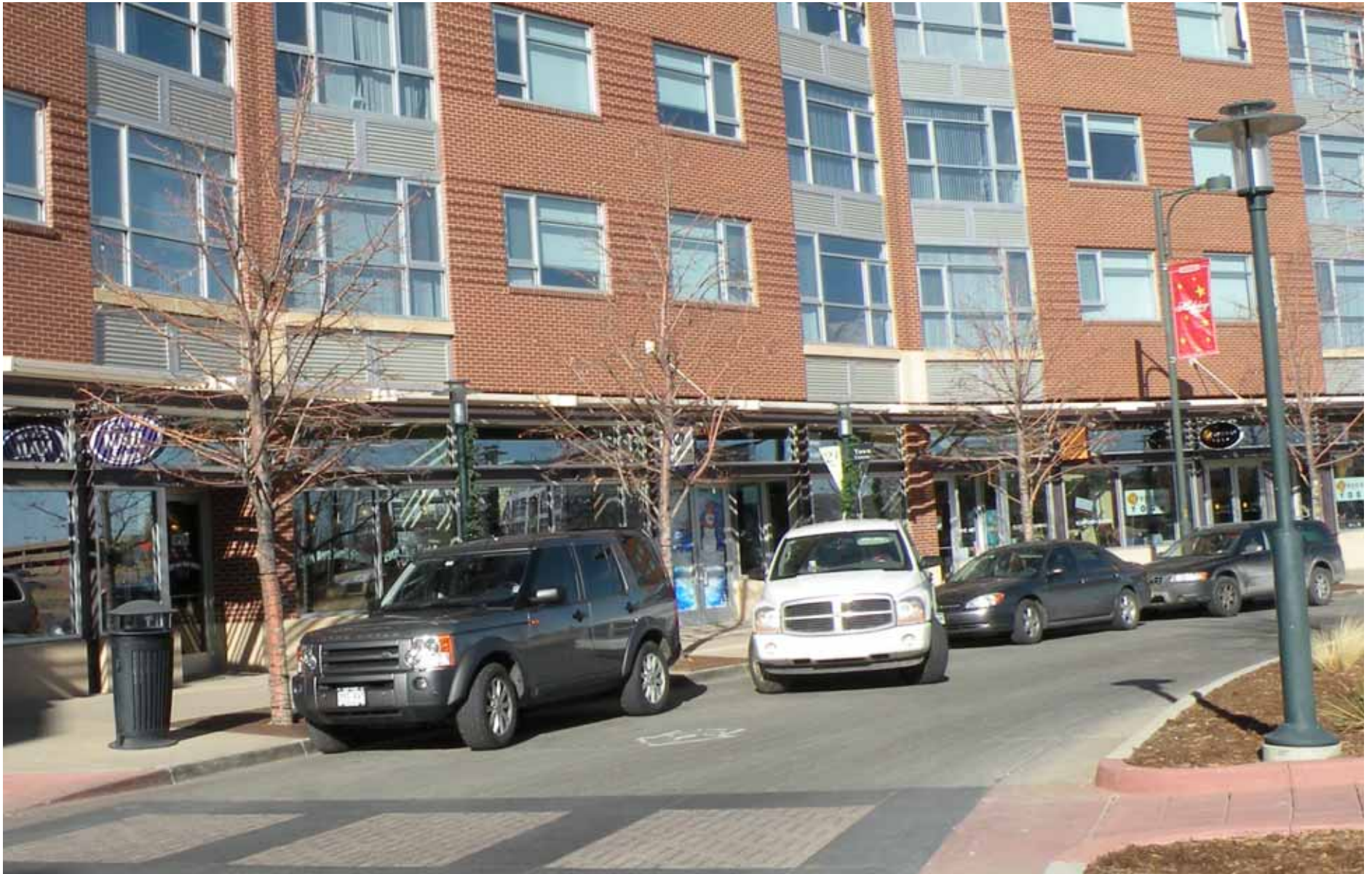
**surface lot with solar panels**

*image #101*



# Parking

**Average Score: 2.2**



**on street parallel parking**

*image #102*

# Parking

**Average Score: 2.2**

## Comments:

### Desirable

- Yes, gives life & scale
- Looks good with a great idea

### Undesirable

- Please no
- It would be better to have parking in the rear



**on street parallel parking**

*image #102*



# Parking

**Average Score: 2.6**



**on street angled parking**

*image #103*



## Parking

**Average Score: 2.6**

### Comments:

#### Desirable

- Yes, traffic calming, scale, sense of enclosure
- Provides more spaces
- Okay if you have the room. I don't think Grantville has the room
- If on street parking is required, angled parking is best option
- Slows down traffic



**on street angled parking**

*image #103*

# Parking

**Average Score: 2.2**



**existing stand alone parking garage**

*image #104*



## Parking

**Average Score: 2.2**

### Comments:

#### Desirable

- Sure, but with better design
- Trees provide some shielding
- I like parking garages in the right area

#### Undesirable

- Not on major thoroughfares. Works if there are other structures hiding it
- Design counts. This missed the mark



**existing stand alone parking garage**

*image #104*



# Parking

**Average Score: 2.5**



**parking garage wrapped with retail**

*image #105*

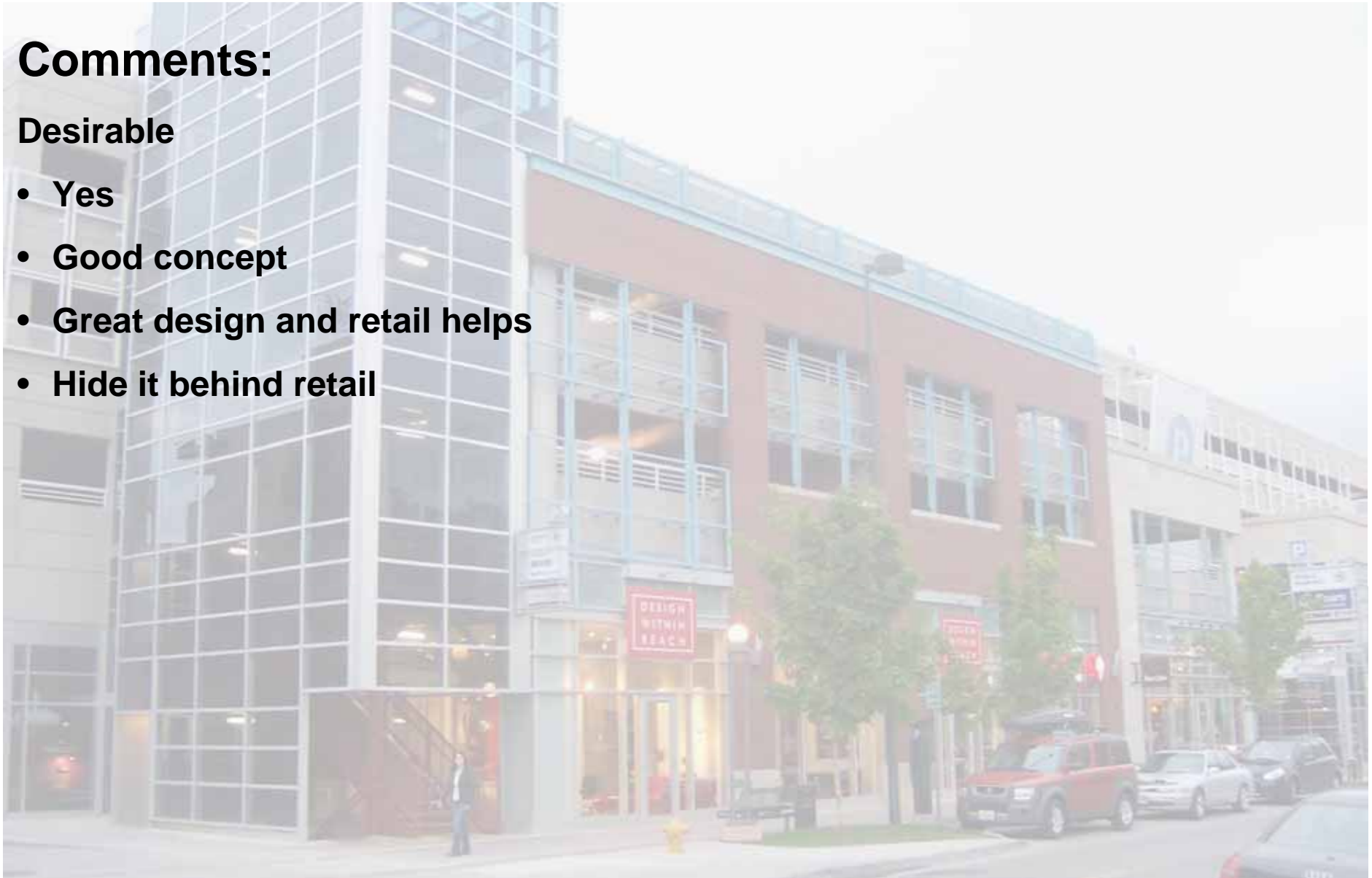
## Parking

**Average Score: 2.5**

### Comments:

#### Desirable

- Yes
- Good concept
- Great design and retail helps
- Hide it behind retail



**parking garage wrapped with retail**

*image #105*

## Parking

**Average Score: 1.8**



**parking garages with green roofs**

*image #106*



## Parking

**Average Score: 1.8**

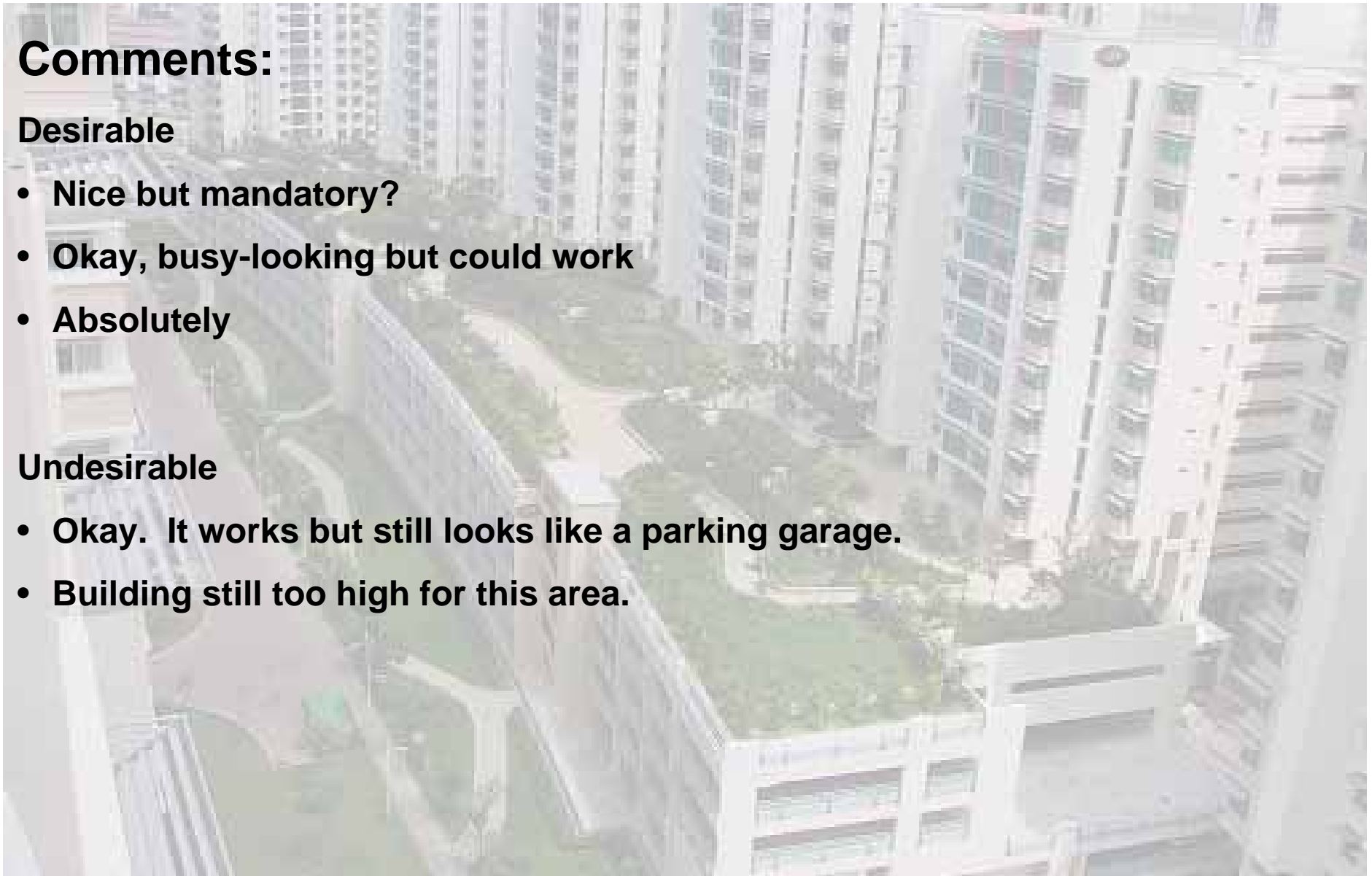
### Comments:

#### Desirable

- Nice but mandatory?
- Okay, busy-looking but could work
- Absolutely

#### Undesirable

- Okay. It works but still looks like a parking garage.
- Building still too high for this area.



**parking garages with green roofs**

*image #106*

## Parking

**Average Score: 2.6**



**parking garage with solar panels**

*image #107*

## Parking

**Average Score: 2.6**

### Comments:

#### Desirable

- Nice but mandatory?
- Really good
- Yes!
- Great Idea

#### Undesirable

- Ugly building even with the panels



**parking garage with solar panels**

*image #107*



# Parking

**Average Score: 1.2**



**below ground parking**

*image #108*

# Parking

**Average Score: 1.2**

## Comments:

### Desirable

- Where possible
- Good idea to conserve space, but must be expensive
- Great idea!
- Only if appropriate

### Undesirable

- Too expensive to work



**below ground parking**

*image #108*

# *Visual Preference Survey*

-5   -4   -3   -2   -1   0   1   2   3   4   5