

**2010 REDISTRICTING COMMISSION OF THE CITY OF SAN DIEGO
MAP SUBMITTAL FORM**

Maps submitted to the Redistricting Commission are considered part of the public record. In addition to being distributed to the Commission, maps submitted will be made available to the public upon request. If submitted in an electronic format, the maps may be uploaded to the Commission website. If you do not have the map available in an electronic format, Commission staff can scan it for uploading upon request.

NOTE: Posting of maps on the Redistricting Commission website does not in any way imply endorsement or support by the Redistricting Commission. Posting is provided only as a service to the public to maximize access to Redistricting Commission proceedings.

To submit a map for posting, please complete the information below and email to redistricting2010@sandiego.gov or via U.S. Mail to: 2010 Redistricting Commission, 1010 Second Avenue Suite 1060, San Diego, CA 92101, ATTN: MAP SUBMITTAL.

Please note that the information provided below will become part of the public record and may be posted online, unless otherwise indicated below.

Name/version of map: 2 maps: District 8 Map; New District Map

Name of individual submitting map: Alberto Pulido Date submitted: 5/2/11

Council District of residence (or neighborhood/community) (*OPTIONAL):

If submitting on behalf of organization or as part of an organized group, name of organization:
Latino Redistricting Committee

Title/affiliation with organization: Steering Committee Member

Contact phone number and email address (required to submit but not required to post online):
619-519-4378 drpollo@sbcglobal.net

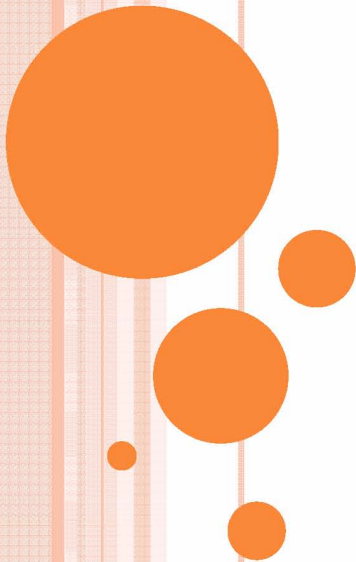
Please indicate if you would like your contact information posted with map: YES NO

If more than one attachment, please list order in which you would like documents to be posted:
This is a ppt presentation. If this not posted then District 8 map first and New District Map second. Th

Please initial that you understand the following disclaimer: I understand that submission of my map does not in any way imply endorsement or support by the Redistricting Commission. ALP

The Redistricting Commission reserves the right to make any map or other material submitted available to the public by means other than the Commission's website.

LATINO REDISTRICTING COMMITTEE



**Submission of Redistricting Plan
May 2nd, 2011**

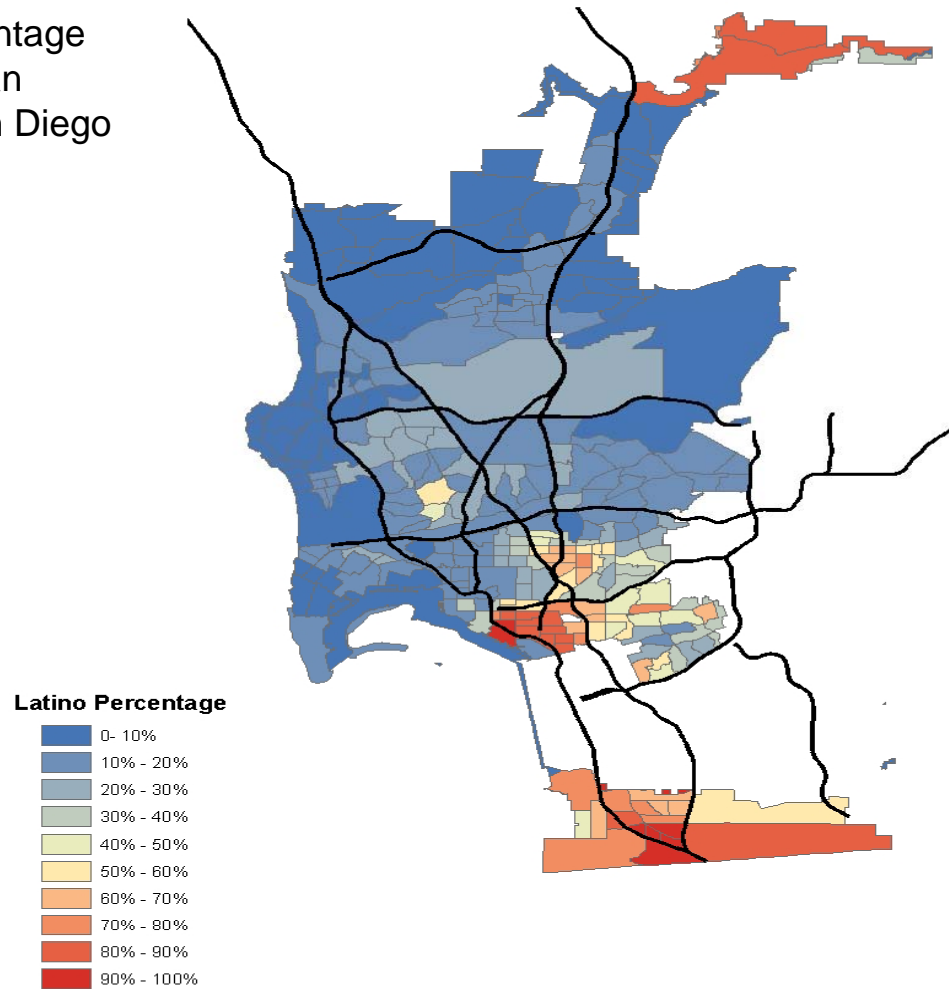
WHO IS THE LATINO REDISTRICTING COMMITTEE?

- The Latino Redistricting Committee is comprised of 40 community leaders and civic-minded activists who have come together in the interest of preserving and building Latino voting power in the San Diego region.
- *Steering Committee members:*
- Mateo Camarillo, Estela De Los Rios, Jose Franco Garcia, Liliana Garcia-Rivera, Waynee Lucero, Alberto Pulido, and Monica Rocha
- The maps submitted by the LRC were drawn in a collaborative process among the LRC membership and in a spirit of cooperation with other communities.



WHERE LATINOS LIVE IN SAN DIEGO


Red = high Latino percentage
Latinas/os reside in urban
sectors of the city of San Diego



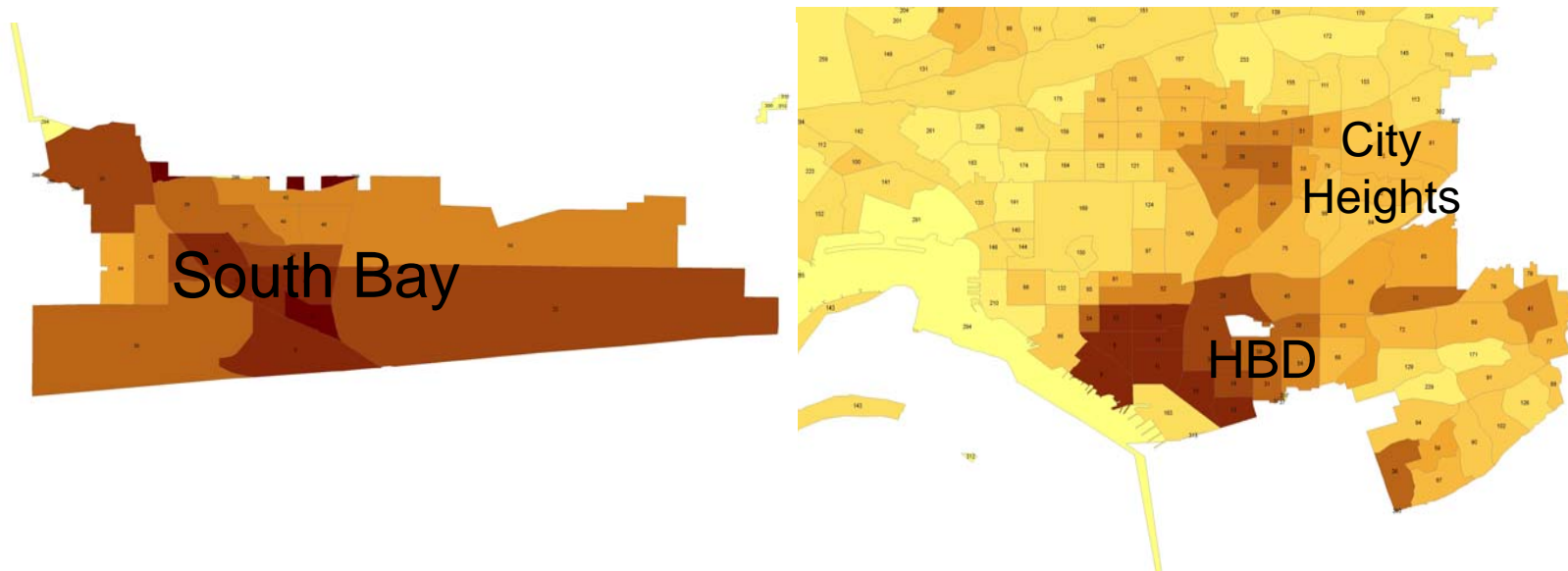
LATINO EMPOWERMENT

- Latinos comprise close to one third of the city's population

Stated Goals of the LRC:

- *Maintain a 75% Latino version of District 8 that keeps the South Bay and HBD intact*
 - *Create an additional majority (+55%) Latino district by uniting City Heights with remaining Latino majority neighborhoods to the south*
 - *This district creates a second majority Latino district in the City of San Diego –providing Latinos with a political voice that mirrors their population numbers.*
- 

CONCENTRATIONS OF LATINOS IN SOUTHERN SAN DIEGO

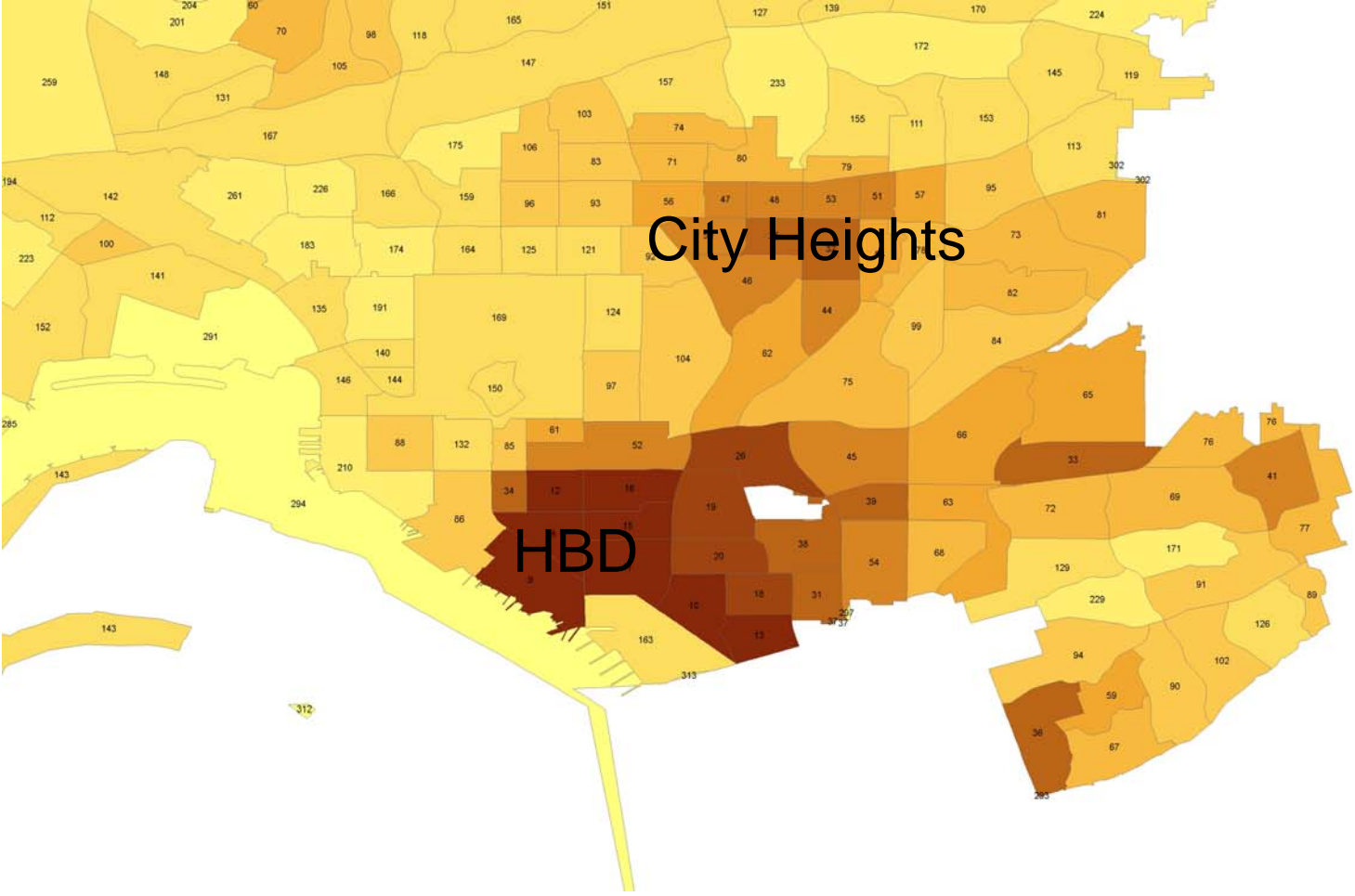


There are now **three** centers of Latino population in the City:

1. South Bay
2. Historic Barrio District
3. City Heights



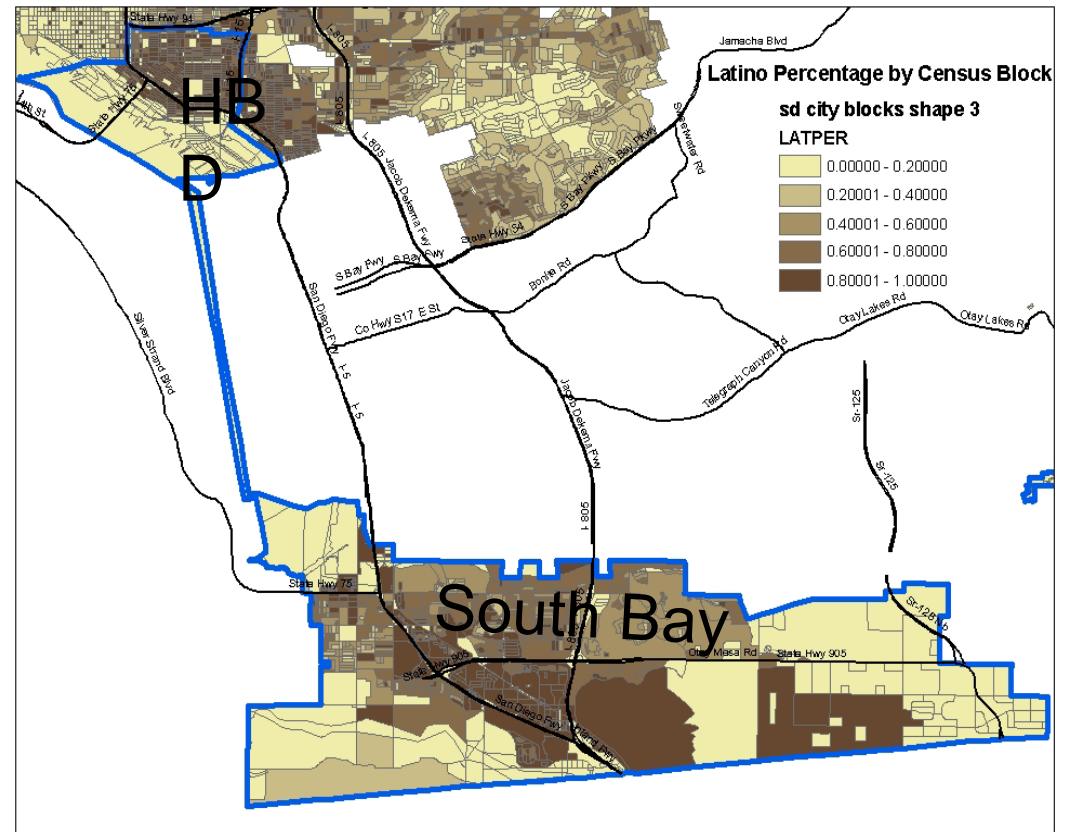
ZOOM IN ON CENTRAL SAN DIEGO



DISTRICT 8

Areas:

- Historic Barrio District
- South Bay



District 8 should remain much as it is today, with the removal of a few neighborhoods to decrease population



STATISTICS OF THESE DISTRICTS

District	8	New
Population	140200	140064
Deviation	-3.06%	-3.15%
Latino	74.62%	57.82%
African-American	4.90%	11.72%
API	9.12%	11.94%



THE TIES THAT BIND: COMMUNITIES OF INTEREST

- The people in this district share:
 - a) Language
 - b) Culture and lifestyle
 - c) Ancestry and national origin
 - d) Religious practices
 - e) Interest in the youth of our population
 - f) Interest in the elderly of our population
 - g) Extended family composition
 - h) Interest in educational goals (where, why and how they attend)
 - i) Shopping patterns
 - j) Rituals
 - k) Socioeconomic categories (working patterns)
 - l) Border cultural context, commerce and lifestyle



...AND

- Recreation centers/ *tradiciones recreativos*
- Markets/*Mercados* (Northgate Market and neighborhood markets)
- Farmers Markets
- Fight for economic housing/ *lucha por viviendas económicas*
- Holidays/ *días festivos*
- Fight for human rights/*lucha por derechos humanos*
- Medical services/ *servicios médicos*
- Working value/ *valores-trabajar*
- Respect
- Cemeteries Mt Hope/HolyCross
- Music/Musica
- All tied to public sites – places of worship, parks, schools, community centers



SEEM GEOGRAPHICALLY UNRELATED BUT...

they have a lot in common:

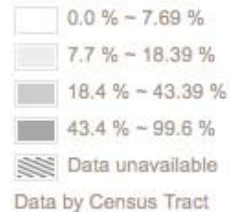
- very high numbers of young people
- high rates of poverty
- low rates of educational attainment (inadequate educational services)
- high numbers of immigrants
- diverse populations of immigrants
- high rates of a non-english language spoken at home
- high rates of foreclosure among rental housing



WE SHARE LANGUAGE

Map thematic data

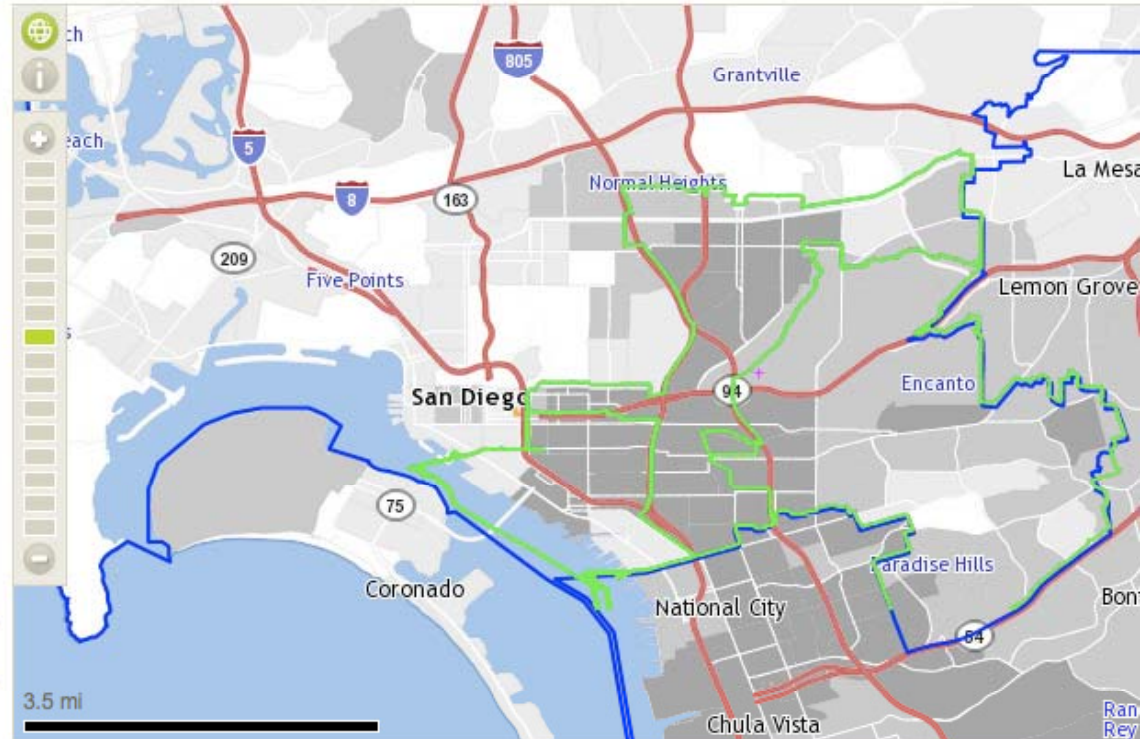
Language Spoken at Home: Spanish



Add data

Map points of interest

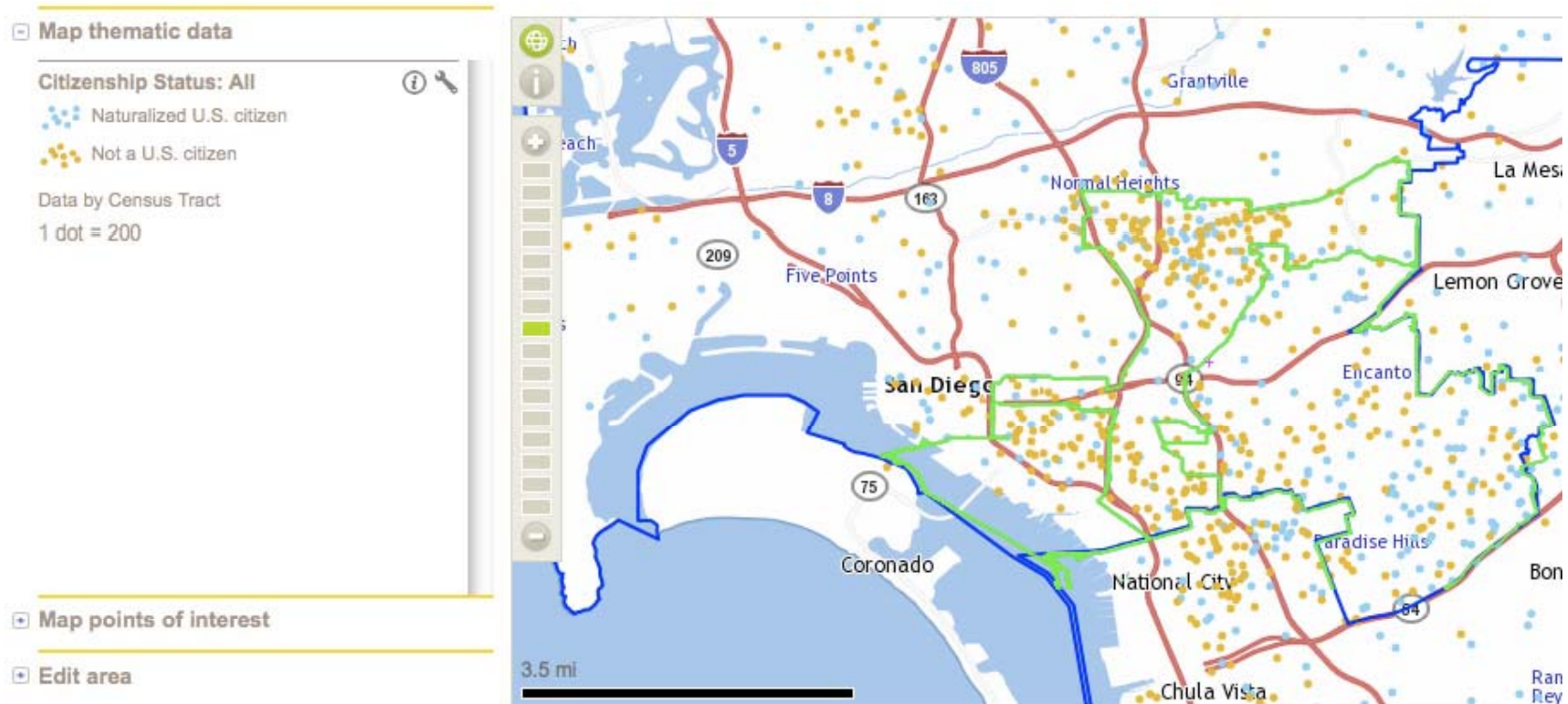
Edit area



Darkest Shading =
+44% of households speak Spanish at home



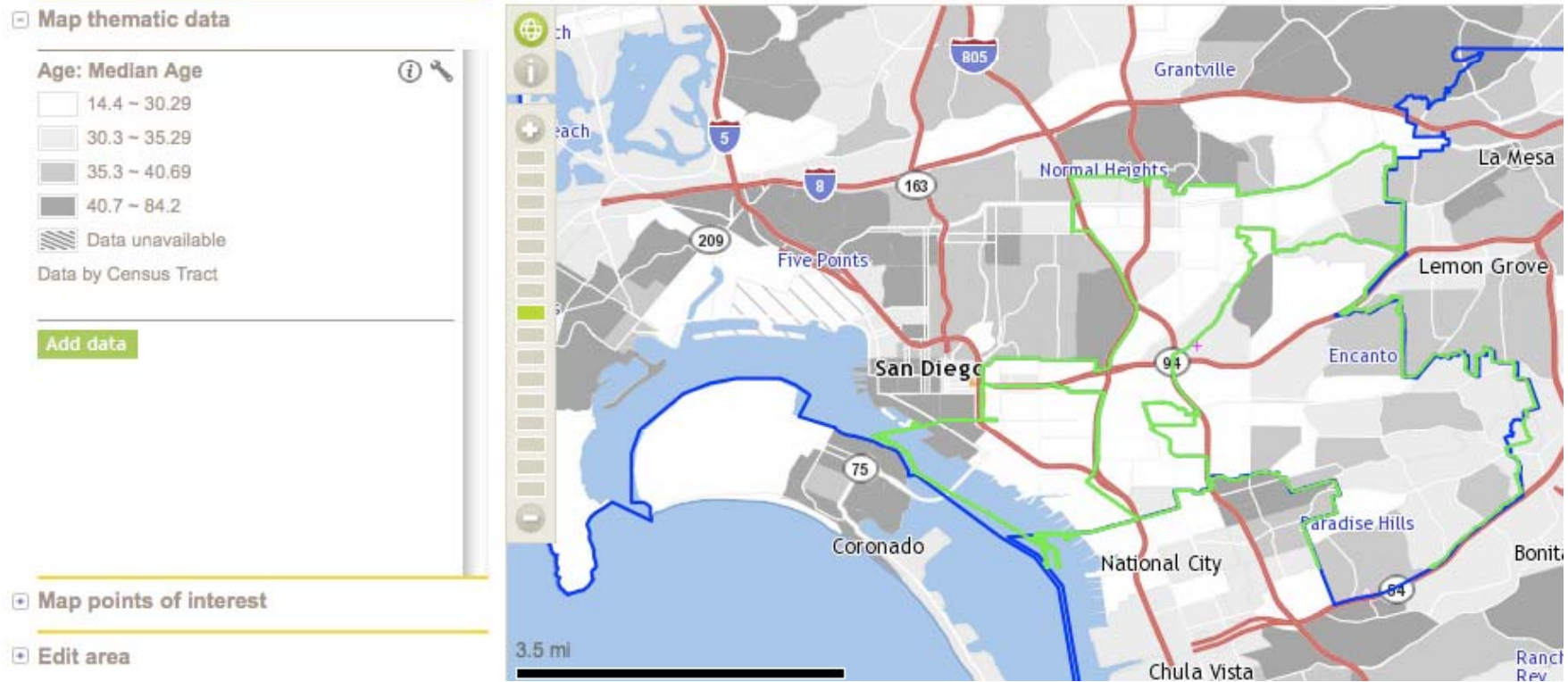
WE ARE A COMMUNITY OF IMMIGRANTS



Orange dot = 200 people who are not citizens
Blue dot = 200 people who are naturalized citizens



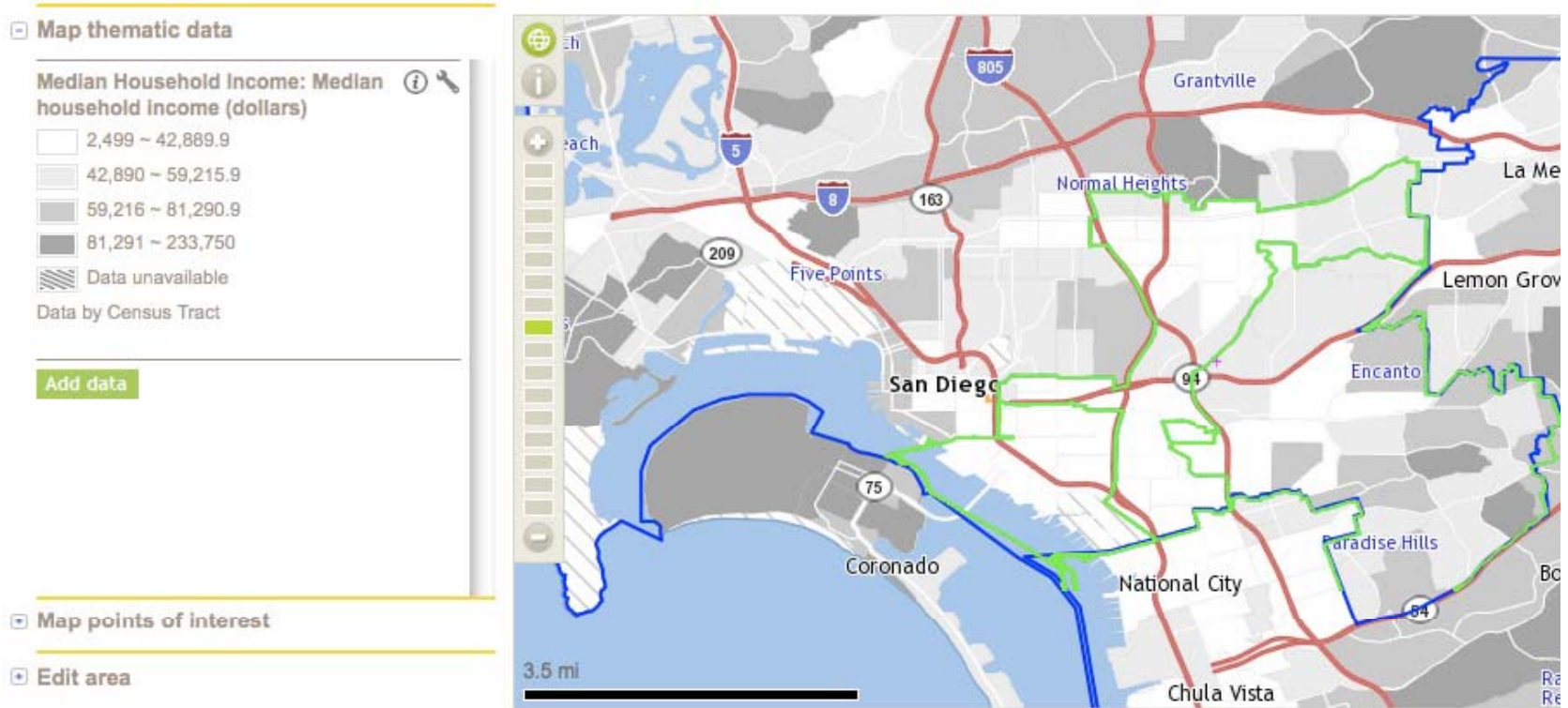
WE HAVE MANY YOUNG PEOPLE



Lightest Shading =
Median Age is less than 30 years



WE HAVE SHARED ECONOMICS



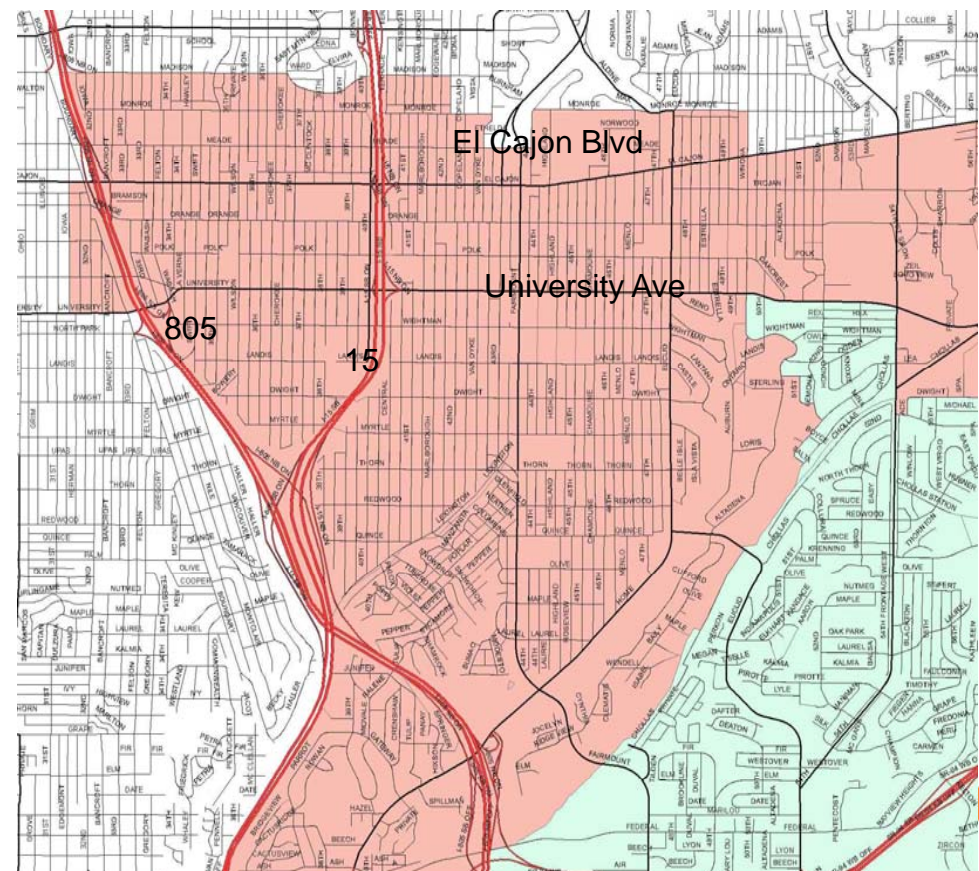
Lightest Shading =
Median Household Income is below \$43K



UNIFICATION OF CITY HEIGHTS

City Heights has been served well in the 3rd, 4th, and 7th Districts
With the addition of a New Council District, there can be a new
and even better future for this neighborhood

- In this new district, City Heights will comprise 40% of the population
- It will be the anchor of the district and a significant political player
- City Heights residents speak 80 different languages and yet have many unifying opportunities and shared challenges for working together
- **A second Latino-majority district is not possible without City Heights**



ONE PERSON-ONE VOTE: OPPORTUNITIES FOR EMPOWERING COMMUNITIES

- This district unites areas of other districts that have low levels of political participation.
- As part of other districts, these areas may have been neglected or had a less significant voice.
- In this district, the budding civic culture of these areas can come into blossom.
- The new district will be multilingual, multicultural district where diversity can become a unifying force because of the many other shared experiences.



A COMMENT ON THE SHAPE OF THE DISTRICT

- The proposed 'shape' of the new district is necessary to empower Latino voters **and** African American voters
- If one were to draw a new majority Latino district that was more compact, it would significantly infringe upon African-American voting rights in District 4

Voting rights is more important than compactness



WHAT THE CITY CHARTER SAYS ABOUT MINORITIES IN REDISTRICTING

- Article II, Section 5.1 of the Charter reads
- *"Each redistricting plan shall provide fair and effective representation for all citizens of the City, including racial, ethnic, and language minorities, and be in conformance with the requirements of the United States Constitution and Federal statutes."*
- Notice the second use of the word "and"?
- The Charter doesn't say empower minorities "to comply" with Federal Law -- it says provide fair and effective representation for all minorities "and" comply with Federal Law.
- **This tells us that the City Charter holds a higher bar for voting rights than Federal Law.**



THE LATINO REDISTRICTING COMMITTEE STANDS WITH OUR NEIGHBORS

- The maps we are proposing to the Commission were drawn in close communication with redistricting leaders from the African-American and LGBT communities
- The LRC supports African-American empowerment in the 4th District and LGBT empowerment in the 3rd District



A NOTE ABOUT THE PROPOSED APAC MAP

- **The map put forward by the Asian & Pacific American Coalition does a disservice to protected communities south of Interstate 8**
- **We know it is possible to draw a map comprised of 9 district with **both** an Asian empowerment district and a second majority-Latino district**



RE-NUMBERING

- What should the two majority-Latino districts be called?
 - District 8 should remain District 8. That name is a part of the identity of the included neighborhoods.
 - The new majority-Latino district should be an **odd** number so that it can have an election in 2012.



THANK YOU Y MUCHAS GRACIAS!

- We want to thank the Commission for its hard and uncompensated work. As community leaders, we know the value of community engagement and volunteer labor.
- We also want to thank the community leaders from our neighboring districts who have been so helpful in our endeavor for supporting increased Latino empowerment in the political process. We are most certainly stronger together than we are apart.
- Lastly, we want to thank all of you here today for coming out and participating in **our democracy!**