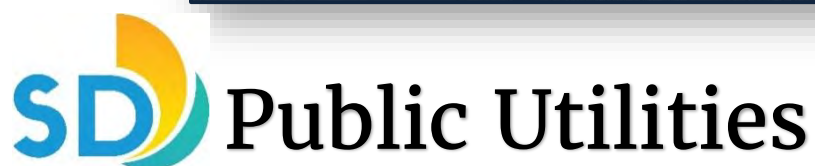


# **Canyon Sewer Cleaning Program And Long Term Sewer Maintenance Program Progress Report**



**2017 Annual Report  
July 1, 2016 – June 30, 2017**



*Cover - Top Left: Long Term Access South Chollas, Top Right: Least Bell's Vireo at Mitigation Site,  
Center: Coyote at Mitigation Site, Bottom: Stadium Mitigation Site*

## TABLE OF CONTENTS

<b>LONG TERM ACCESS PROJECTS .....</b>	<b>2</b>
<b>MAINTENANCE, MONITORING, AND MAPPING .....</b>	<b>5</b>
<b>CONSTRUCTION AND EMERGENCY PROJECTS .....</b>	<b>6</b>
<b>25 MONTH REVEGETATION AND RESTORATION PROJECTS .....</b>	<b>8</b>
<b>MITIGATION PROJECTS .....</b>	<b>10</b>
Canyon View Upland Restoration Mitigation Project .....	12
Central Tecolote Enhancement Mitigation Project .....	14
Rose Canyon Mitigation Project .....	16
San Clemente Canyon Mitigation Project .....	18
Rancho Mission Canyon Wetland Enhancement Project .....	20
Tecolote Canyon Mitigation Project .....	22
San Diego River Wetland Creation Project .....	24
Los Peñasquitos North Wetland Creation Project .....	26
Lake Murray Mitigation Project .....	28
El Rancho Peñasquitos Wetland Enhancement Project .....	30
Otay Mesa Upland Mitigation Bank .....	32
Stadium Wetland Mitigation Project .....	34

## LIST OF FIGURES

Figure 1	Public Utilities Mitigation Sites Overview Map
Figure 2	Canyon View Upland Restoration Mitigation Project Vicinity Map
Figure 3	Central Tecolote Mitigation Vicinity Map
Figure 4	Rose Canyon Mitigation Site Vicinity Map
Figure 5	San Clemente Mitigation Project Vicinity Map
Figure 6	Rancho Mission Mitigation Vicinity Map
Figure 7	Tecolote Canyon Mitigation Vicinity Map
Figure 8	San Diego River Mitigation Project Vicinity Map
Figure 9	Los Peñasquitos North Wetland Mitigation Vicinity Map
Figure 10	Lake Murray Mitigation Project Vicinity Map
Figure 11	El Rancho Peñasquitos Mitigation Vicinity Map
Figure 12	Otay Mesa Upland Mitigation Bank Vicinity Map
Figure 13	Stadium Mitigation Site Vicinity Map

## ATTACHMENTS

Attachment A	25 Month Revegetation and Restoration Projects Status Table
Attachment B	Mitigation Summary Table
Attachment C	Mitigation Assignment Summary Table

## ACRONYMS AND ABBREVIATIONS

ACOE	United States Army Corps of Engineers
BMP	Best Management Practices
CDFW	California Department of Fish and Wildlife
CIP	Capital Improvement Project
DSD	Development Services Department
MEAP	Long Term Maintenance and Emergency Access Plan
MHPA	Multiple Habitat Planning Area
OSCAC	Open Space Canyons Advisory Committee
PEIR	Programmatic Environmental Impact Report
PEP	Plant establishment period
Program	Canyon Sewer Cleaning Program and the Long-term Canyon Sewer Maintenance Program
Public Utilities	City of San Diego Public Utilities Department
ROF	Redirection of Flow
SCR	Substantial Conformance Review
WWC	Wastewater Collection Division

## EXECUTIVE SUMMARY

In response to an Administrative Order from the U.S. Environmental Protection Agency, in an effort to reduce sewer spills and beach closures, and under the direction of Council Policies 400-13 and 400-14, the City of San Diego's Public Utilities Department (Public Utilities) has adopted the Canyon Sewer Cleaning Program and the Long-term Canyon Sewer Maintenance Program (Program) to access, clean, and repair miles of sewer infrastructure located in canyons and other environmentally sensitive areas.

A Programmatic Environmental Impact Report (PEIR) was prepared to study the Program and in July 2004 the City of San Diego approved Coastal Development Permit No. 13506 and Site Development Permit No. 13507 for the Program.

The objectives of the Program are:

- To complete the inspection and cleaning of City of San Diego sewer infrastructure located in canyons and other environmentally sensitive areas.
- To identify and implement efficient, effective, and environmentally sensitive means to accomplish the necessary canyon sewer cleaning activities.
- To provide for long-term maintenance of canyon sewer infrastructure, recognizing that availability of access to the infrastructure is essential for an effective long-term program, in accordance with Council Policy 400-13.
- To evaluate and pursue options to redirect sewage flows out of canyons and into street sewer lines or other accessible areas, where feasible and appropriate pursuant to Council Policy 400-14.

This annual report, as required by the site development permit condition 27, provides a Progress Report to the Open Space Canyons Advisory Committee (OSCAC) on the Program for the year from July 1, 2016 through June 30, 2017. This report provides the status of all Program activities within the reporting year, including habitat mitigation, long term access planning and implementation, construction and emergency projects, and 25 month revegetation and restoration projects.

## LONG TERM ACCESS PROJECTS

Long Term Sewer Access Projects provide access paths to sewer infrastructure for ongoing maintenance, inspections, and cleaning. One of the first steps in determining whether an access path is needed is to prepare a redirection of flow (ROF) study. A ROF study evaluates the economic feasibility of removing all or part of the sewer from an environmentally sensitive area or canyon versus providing access to the sewer if it remains in place.

When redirection of flow is found to be infeasible from all or portions of environmentally sensitive areas/canyons, Public Utilities staff develop a Long Term Maintenance and Emergency Access Plan (MEAP) in accordance with Policy 400-13. Public Utilities staff prepares and submits a Substantial Conformance Review (SCR) packages to the Development Services Department (DSD) for a determination whether the proposed mitigation, restoration, and access planning for individual canyon areas or project is in conformance with the PEIR and Program master permits. Project specific design plans are then prepared as necessary to provide specific direction on access improvements and construction that include additional information necessary to obtain regulatory agency permits. Separate permits or clearances are obtained from the regulatory agencies prior to implementation of long term access projects.

The following canyons are in various stages of long term access planning and implementation:

- **32<sup>nd</sup> Street** – Public Utilities Wastewater Collection (WWC) Division constructed the new access paths in September 2016. The project is currently in the post construction 25 month maintenance & monitoring period.
- **Alvarado** – WWC crews will construct the access path and streambed crossings Fall 2017. The long term access project is anticipated to be completed by March 2018.
- **East Tecolote** – Portions of the project has to be re-designed due to the changes in canyon conditions and in response to resource agencies comments to minimize impacts in the canyon. Because of these reasons we are implementing this Project in two phases. Phase 1 (Crossings 5 & 7) are scheduled to be constructed in October 2017 by City Crews. Phase 2 (Crossings 1-6) design will be finalized in 2017. Public Utilities staff will resubmit the new design to resource agencies for permits for Phase 2. Public Utilities anticipates construction (Phase 2) to be in 2018.
- **Norfolk Canyon** – Public Utilities staff are awaiting final regulatory agency approvals for the upsizing of one pipe culvert along the existing access path as well as to maintain the streambed crossings. Public Utilities is in the process of analyzing the canyon to provide updated engineering plans as well as a Biological Assessment; these reports will reflect the current conditions of the canyon.



- **Home Avenue Trunk Sewer** – Construction was completed by WWC in fall 2016. The project is currently in the post construction 25 month maintenance & monitoring period.
- **South Chollas** –The project is currently in the post construction 25 month maintenance & monitoring period and is scheduled to be completed in January 2018.



*South Chollas –Improved Access Path to Manhole 449*

- **North, Central, and Southern Tecolote Canyon** – Access crossing improvements are included with the Tecolote Canyon Trunk Sewer Replacement Capital Improvement Projects (CIP) project. The CIP project is currently in the design and permitting stage. Currently the project is scheduled to start construction December 2019.
- **Mt. Elbrus** – The new access path was constructed by WWC in October 2016. The project is currently in the post construction 25 month maintenance & monitoring period.
- **Manning Canyon** – The project is currently in the post construction 25 month maintenance & monitoring period.



Manning Canyon Repaired Access Path

- **Interstate (I)-15 & Balboa** –The process for the SCR submittal has begun, and includes the completion of a Biological Assessment and Historical Resource Report.



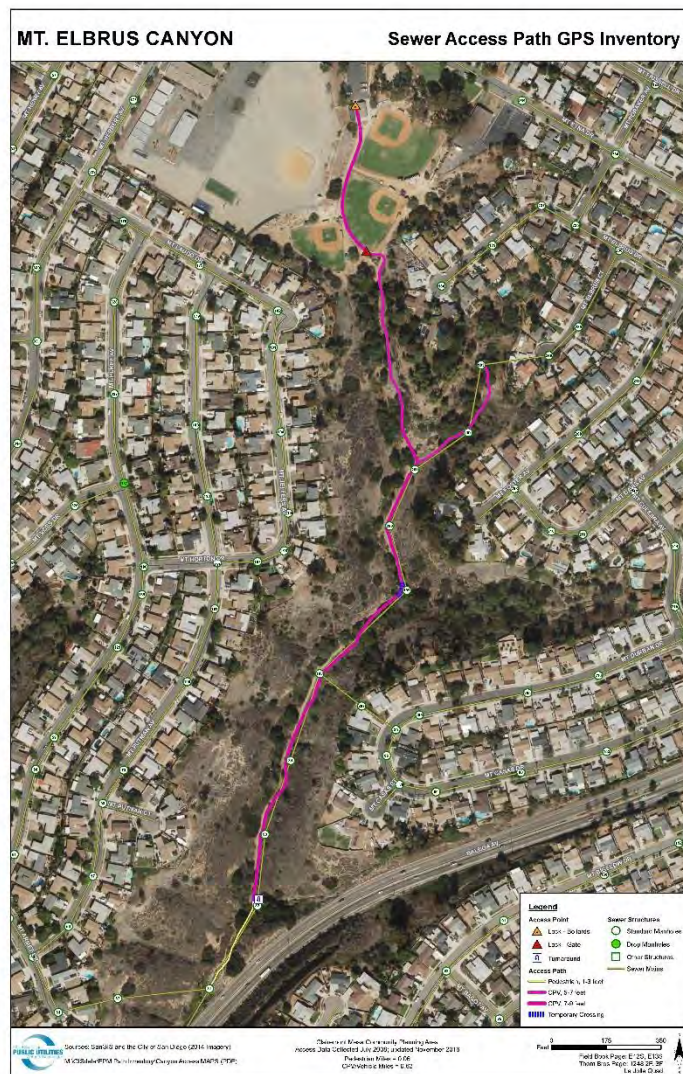
## MAINTENANCE, MONITORING, AND MAPPING

Wastewater Collection Division staff coordinated closely with Environmental Staff (Environmental Section) in ensuring daily activities were in compliance with the Program's master permit, agency permits, and environmental regulations.

Environmental training is provided to all Public Utilities staff working in canyons/environmentally sensitive areas. Crews are directed to contact staff in the Environmental Section for guidance and support for work that may impact sensitive resources.

The Environmental Section reviews daily field work reports, facilitates monthly meetings to discuss and review all work in canyons, obtains permits, and provides daily support to field crews. Work conducted in canyons/environmentally sensitive areas is monitored by the Environmental Section. Bird nesting surveys, vegetation and sensitive species mapping, jurisdictional delineations and other biological surveys are completed by the Environmental Section for daily WWC operation and maintenance of sewer lines in canyons.

Public Utilities has increased its efforts to inventory and map existing access to sewers in canyons. This inventory provides information on existing access conditions, identifies access needs and areas of concern), and facilitates ongoing maintenance. To date, 163 miles of pedestrian and vehicular paths have been mapped with the GPS data for 137 canyon areas. Vehicle access path data is updated quarterly and is available on SanGIS.



*Access Path Inventory Map for Mount Elbrus*

## CONSTRUCTION AND EMERGENCY PROJECTS

Below is a list of sewer emergency projects and/or pipeline/manhole repair projects that occurred in canyons or environmentally sensitive areas since July of 2016:

### **Emergency Projects**

- Alvarado Canyon Sewer Pipe Emergency Repair (Pipe Protection)
- Mesa College & I-805 Canyon (8405 Fireside Ave) Emergency (Sewer Repair)
- Pottery Canyon Sewer Spill Emergency (Sewer Repair)
- San Clemente Canyon Emergency (Sewer Repair)

### **Other Construction Projects**

- PS 77 Sub Aq Condition and Line Stop Manhole Access (Pipe Repair)
- Bounty and Waring (Navajo Canyon) Pipe Repair (Pipe Repair)
- South Mission Valley Trunk Sewer Access (Manhole Repair)
- Peñasquitos TS Condition Assessment
- Programmatic WW Condition Assessment – Dual PS64 Forcemains (Condition Assessment)
- Ocean Blvd Manhole 318 Repair (Manhole Repair)



*San Clemente Canyon Emergency*



Public Utilities crews completed access path maintenance in multiple canyon areas to facilitate access for cleaning, inspections and maintenance. Path maintenance is usually limited to trimming or mowing vegetation that has grown on the pathways. Maintenance on the access path precedes manhole cleaning and maintenance.

Public Utilities staff manages emergency and non-CIP construction projects. Environmental review, monitoring, and reporting are done in adherence with the Program. Biological assessments have been prepared and permits have been obtained as necessary for these emergency and construction projects. Following construction, revegetation and/or restoration has been implemented in accordance with the Program.



*Alvarado Canyon Sewer Repair Pipe Emergency*



*Pottery Canyon Pipe Encasement Emergency*

## **25 MONTH REVEGETATION AND RESTORATION PROJECTS**

Conditions of the Master permit require effective erosion control of access paths and restoration of temporarily impacted areas outside of permanent access paths following construction. Each impact area is monitored and maintained for a period of no less than 25 months.

Revegetation sites include all areas required for permanent access to utilities including the access paths, turn-arounds, and work areas around manholes. When new access paths and permanent access areas are created, revegetation is required. The goal of revegetation is successful erosion control. Maintenance and monitoring of revegetation areas may include hydroseeding or hand-seeding, weeding, mulching or installing wood chips on the path, installation of temporary Best Management Practices (BMPs), site monitoring or a combination of the above treatments.

Restoration sites are areas impacted outside of permanent access areas. Restoration areas are typically staging areas, emergency access or work areas, pipeline repair areas, unauthorized impact areas, or areas disturbed as a result of temporary widening of pathways. The goal of habitat restoration is re-establishment of native habitat. Restoration areas shall obtain native plant coverage equal to the native species present in the adjacent area or 30% coverage, whichever is greater. Restoration areas shall support no more than 1% perennial weeds and no more than 10% annual weeds during the 25 month maintenance period. Maintenance and monitoring of restoration areas may include hydroseeding or hand-seeding, installation of container plants, weeding, and installation of temporary BMPs, temporary irrigation, site monitoring or a combination of the above treatments.

Seed and plant material used for revegetation and restoration efforts is from locations within 25 miles of the coastline in San Diego County. Maintenance and monitoring of all sites continues for 25 months or until successful erosion control is achieved on the paths and/or restoration goals are met outside of the paths.

During this reporting year, eight (8) sewer revegetation projects were completed. In addition to eighteen (18) ongoing projects, and six (6) additional sites were installed and maintenance and monitoring of these sites was initiated.

Updates on the status of the revegetation and restoration projects are a regular agenda item at OSCAC's meetings. See Attachment A for the June 2017 Revegetation and Restoration Projects Status update table.





*Mission Valley Canyon Restoration Area*



*Buchanan Emergency Restoration*



## MITIGATION PROJECTS

In accordance with applicable local, state, and federal regulations, restoration, revegetation, or mitigation is required for significant biological impacts resulting from the Program, such as the creation of access paths through environmentally sensitive areas, emergency repairs, and pipeline repair projects. In order to mitigate these impacts, Public Utilities staff has identified and implemented a number of habitat mitigation projects located within various watersheds where past, current, or future impacts have or may occur. These mitigation sites are designed and built to accommodate numerous Public Utilities projects. Allocation of mitigation is completed as each project is planned, permitted and constructed. Post construction adjustments are made to mitigation assignments based on actual project impacts. Project impacts and mitigation assignments are tracked internally within the Canyon Database. A summary of acreages available, acreages assigned, and the balance is included as Attachment B. A more detailed summary of assignments is included as Attachment C.

The location of these projects is shown in Figure 1. The status of each habitat mitigation project is summarized below.





**Figure 1**  
Mitigation Sites  
Overview Map



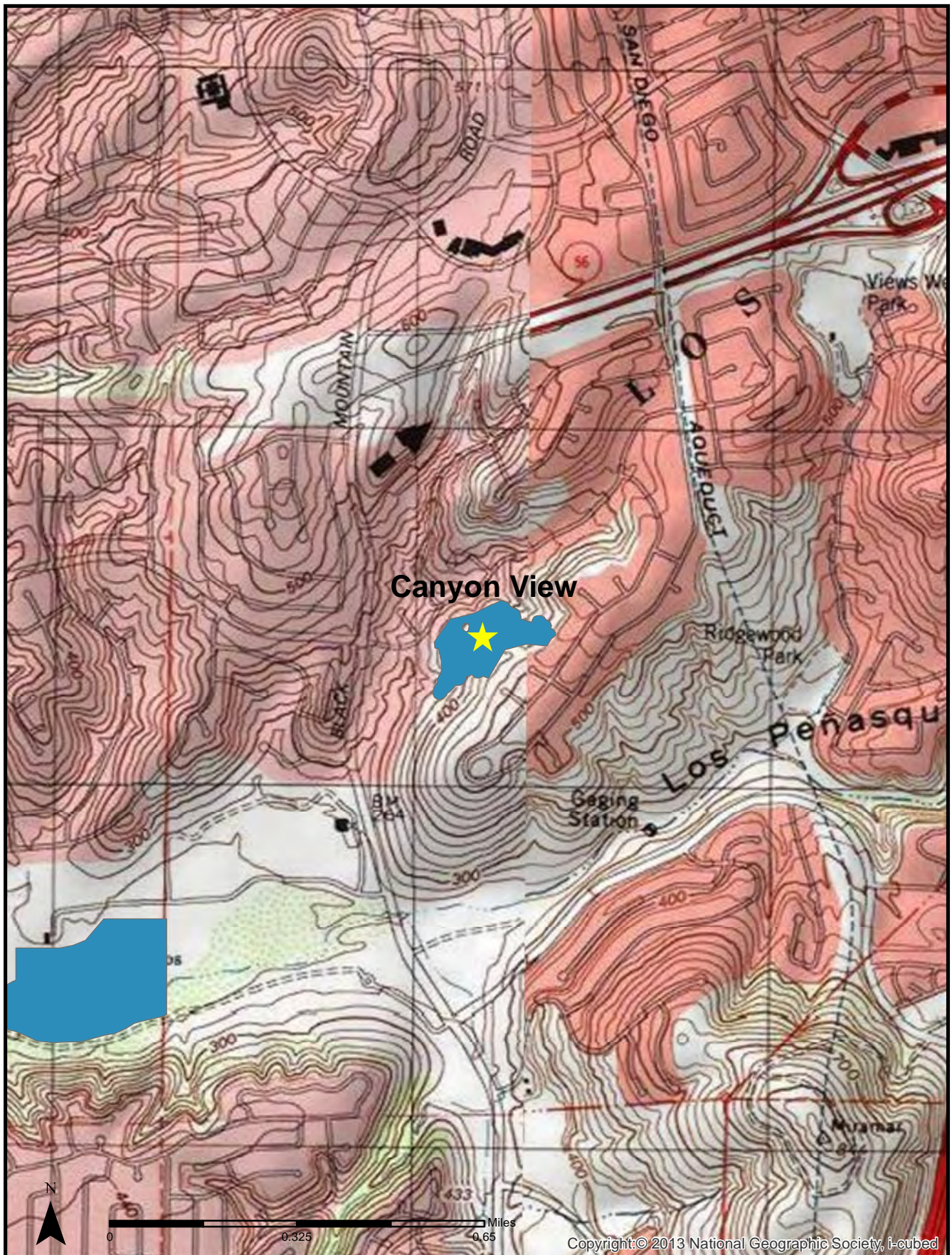
## Canyon View Upland Restoration Mitigation Project

Construction began in September 2011 for this project, located east of Black Mountain Road and south of Adolphia Street in Los Penasquitos Canyon (Figure 2). The project involves the restoration of approximately 0.9 acres of native grassland and 6.49 acres of Diegan coastal sage scrub habitat, located on City of San Diego owned parcels within Los Penasquitos Canyon. The project serves to mitigate impacts associated with Public Utilities projects located in Los Penasquitos Canyon Preserve. At the end of Year 4 both upland vegetation communities had met or exceeded the success criteria milestones for species richness, native species cover, non-native species cover, and target invasive species cover that had been established for that year. During Year 4 regular maintenance visits occurred which included the removal of non-native vegetation and trash, and removal of degraded erosion control materials (i.e., straw wattle) and plant cages. The project's supplemental watering has been eliminated (Year's 4 and 5) in order to provide evidence that the vegetation is self-sufficient. Coastal California gnatcatchers (*Poliophtila californica californica*) have been observed foraging onsite within the Diegan coastal sage scrub habitat during Year 4 monitoring. The site is currently in year 5 of the 5 year maintenance and monitoring period. The site will be maintained and monitored for the 5-year period until agency sign off. The goal of the project is to restore low quality non-native uplands into high quality native habitats.

Mitigation Credits			
Habitat Type	Acres	Assigned	Balance
Diegan Coastal Sage Scrub (Tier II)	6.49	1.61	4.88
Native Grassland (Tier I)	0.89	0.02	0.87









## Central Tecolote Enhancement Mitigation Project

This project has completed the 5-year maintenance and monitoring period and is awaiting Regulatory Agency sign-off. At the end of Year 5 vegetation communities had met or exceeded the success criteria milestones that had been established for that year. This project is located south of Balboa Avenue and north of Mt. Acadia Boulevard in Tecolote Canyon (Figure 3). The project consists of riparian enhancement and native grassland/coastal sage scrub restoration in addition to a weed management area that encompasses all of Tecolote Creek from Balboa Avenue to Mt Acadia.

Exotic species removed from the site include: Brazilian pepper tree, pampas grass, Mexican fan palm, Canary Island date palm, eucalyptus, fennel (*Foeniculum vulgare*), mustard, and yellow sweetclover (*Melilotus indicus*). Maintenance activities completed this year include weed and trash removal, , cutting installation, additional seeding, and site protection repair.

The City Public Works Department's is currently proposing a Tecolote Canyon Trunk Sewer Improvement Project; this project is currently being designed. A portion of the CIP project has the potential to overlap with the mitigation project area. At the end of Year 5 a final vegetation mapping and jurisdictional delineation was performed in order to rectify any changes to the final mitigation areas. Once finalized Public Utilities staff would coordinate a sign-off site visit.

Mitigation Credits*			
Habitat Type	Acres	Assigned	Balance
Oak Riparian Forest (Enhancement)	8.06	2.08	5.98
Diegan Coastal Sage Scrub (Tier II)	2.08	0.62	1.46
Native Grassland (Tier I)	1.64	0.10	1.54

\*Mitigation Credit may change at sign-off.









## Rose Canyon Mitigation Project

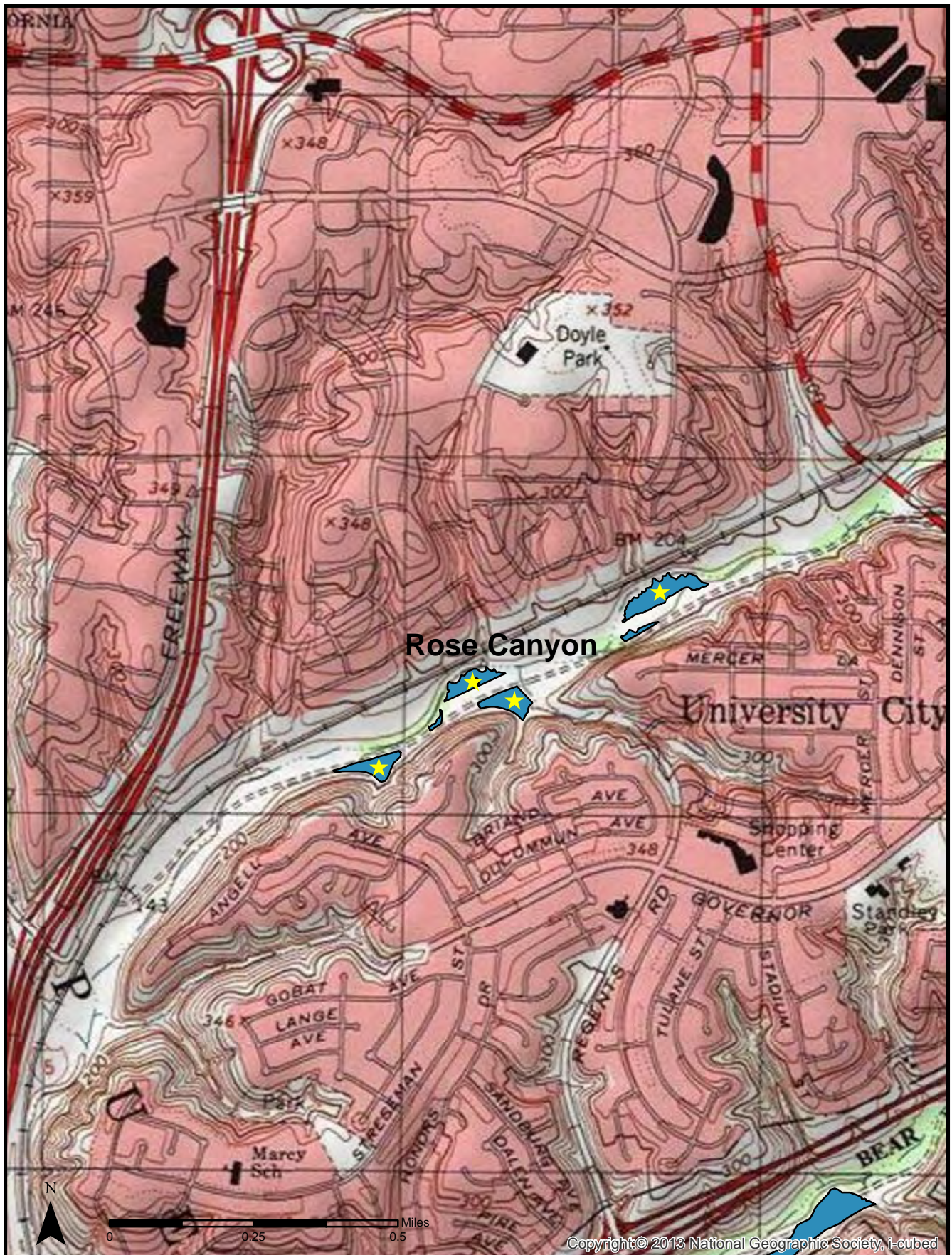
The Rose Canyon Mitigation Project is located in the Rose Canyon Open Space Park, starting approximately one half mile west of Genesee Avenue and continuing another one half mile further west into the park (Figure 4). Approximately 5 acres of oak riparian forest, southern cottonwood-willow riparian forest, and mule fat scrub were created adjacent to Rose Creek with 0.61 acre of riparian enhancement. Approximately 4.75 acres of Diegan coastal sage scrub habitat was restored on the upland areas.



Construction was initiated in September 2007 and included clearing of non-native vegetation, grading, installation of a temporary irrigation system, planting, hydroseeding, fencing, and sign installation. The project entered the 5-year maintenance period on July 15, 2008. The project has completed seven years of maintenance and is awaiting Corps regulatory sign-off. Vegetative cover at the site is very high, uplands habitat exceeds 90% cover and has a high diversity of species that includes California sagebrush (*Artimisia californica*), white sage (*Salvia apiana*), coyote bush (*Baccharis pilularis*), and San Diego goldenbush (*Isocoma menziessii*). The wetland creation habitat exceeds 100% cover in some sections of the project area with canopy height reaching 20 to 25 feet; a number of cottonwood (*Populus* spp.) and willow (*Salix* spp.) saplings were observed on the site. Drift deposits and the development of sand bars were observed throughout the wetland enhancement areas indicating wetland hydrology was present. The native grassland habitat continues to do well, with increased coverage of purple needlegrass (*Stipa pulchra*) and beardless wild rye (*Elymus triticoides*). The site will continue to receive maintenance on a semi-annual to quarterly basis to help ensure native habitat continues to increase in maturity and spatial coverage. This year maintenance crews focused on control and removal of non-native annuals such as mustard (*Brassica nigra*) and sweet clover (*Melilotus officinalis*). Available mitigation acreage below reflects actual acreage of habitats restored at the end of the year 5 maintenance period.

Mitigation Credits			
Habitat Type	Acres	Assigned	Balance
Riparian Forest (Creation)	5.05	3.18	1.87
Riparian Forest (Enhancement)	0.61	0.55	0.06
Diegan Coastal Sage Scrub (Tier II)	4.75	2.46	2.29
Native Grassland (Tier I)	0.28	0.09	0.19







## San Clemente Canyon Mitigation Project

The San Clemente Canyon Mitigation Project provides mitigation for impacts associated with Public Utilities projects within San Clemente Canyon/Marian Bear Memorial Park and surrounding watershed. The project is located at two sites within the park, one just east of the Regents East parking area and the other approximately three-fourths of a mile east of the Genesee parking area (Figure 5).

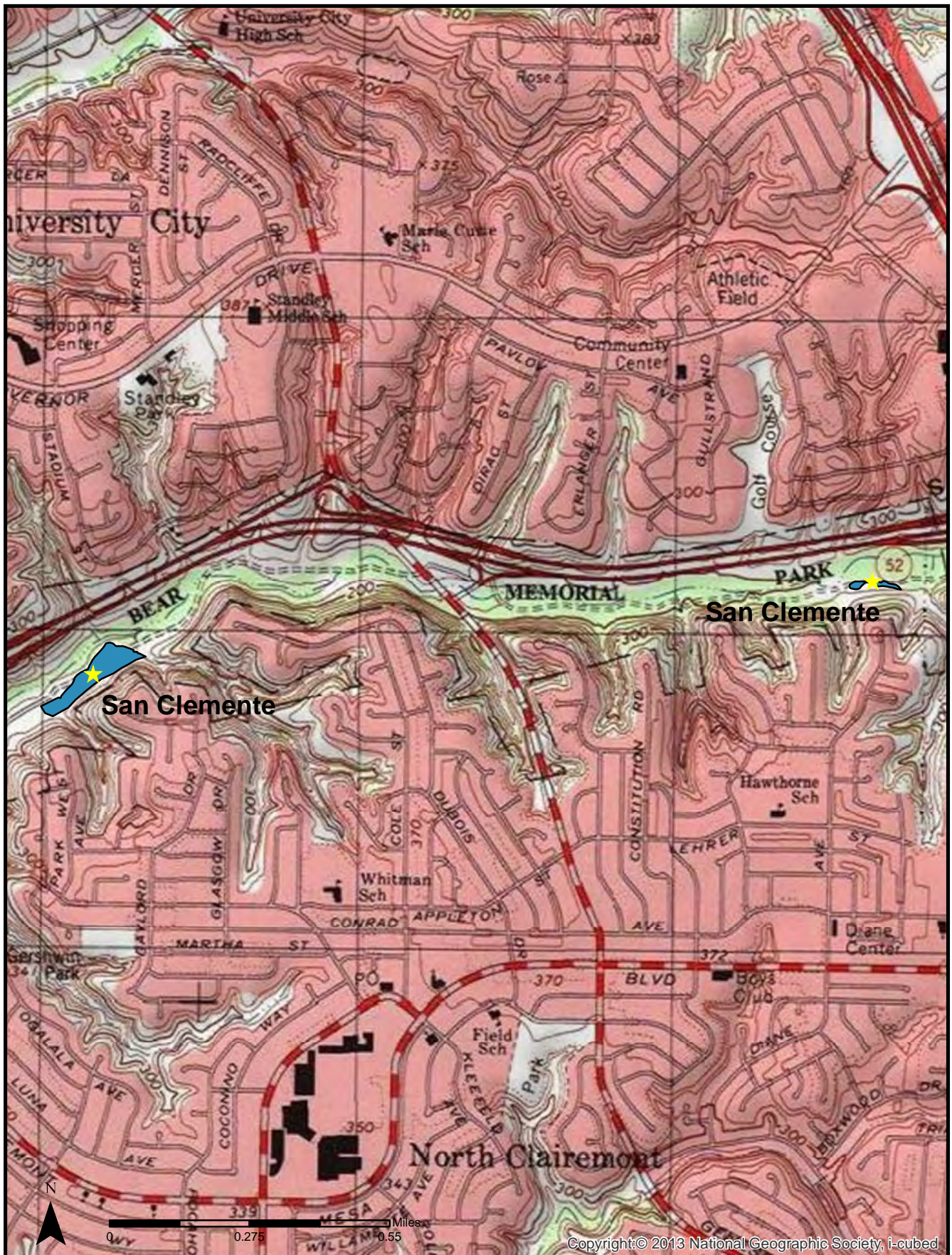
The project includes the creation of 2.86 acres of wetland habitat (southern willow riparian forest, streambed and emergent wetland) and 2.81 acres upland habitat (Diegan coastal sage scrub and oak woodland).



Construction was initiated in October 2007. The site reached its 5-year maintenance and monitoring period in September 2013 and received regulatory sign-off from the Army Corps of Engineers (ACOE) in January 2015. The upland and wetland planting areas for the project have shown steady establishment of target species with vegetative cover in portions of the wetland habitat over 100% cover. The wetlands support a willow over story and a well-developed understory including species such as California rose (*Rosa californica*) and San Diego marsh elder (*Iva hayesiana*). The site will continue to receive maintenance on a semi-annual to quarterly basis to help ensure native habitat continues to increase in maturity and spatial coverage. This year maintenance crews focused on control and removal of non-native annuals such as sweet clover (*Melilotus officinalis*). Available mitigation acreage below reflects actual acreage of habitats restored at the end of the year 5 maintenance period and rounded totals of assignments to date.

Mitigation Credits			
Habitat Type	Acres	Assigned	Balance
Streambed (Creation)	0.02	0.01	0.01
Emergent Wetland (Creation)	0.20	0	0.20
Riparian Forest (Creation)	2.64	1.99	0.65
Diegan Coastal Sage Scrub (Tier II)	2.42	1.56	0.86
Oak Woodland (Tier I)	0.39	0.19	0.20





Copyright © 2013 National Geographic Society, i-cubed



## Rancho Mission Canyon Wetland Enhancement Project

The Rancho Mission Canyon Wetland Enhancement Project is located in the City's Rancho Mission Canyon Open Space Park, south of Mission Gorge Road, north of Navajo Road, and on either side of Margerum Way in the Allied Gardens Community of the Navajo Community Planning Area (Figure 6).

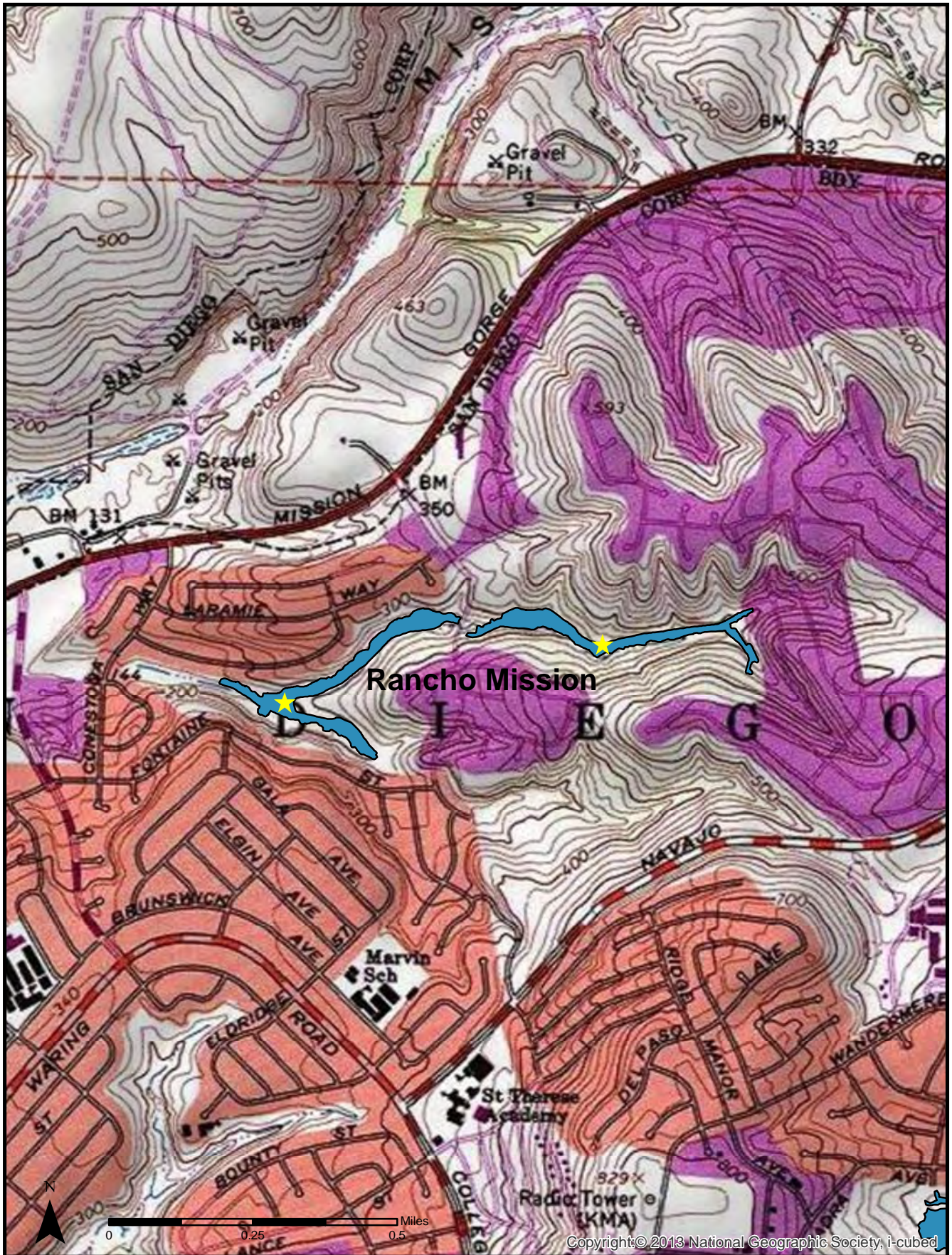
The Rancho Mission Canyon Project includes the enhancement of 7.59 acres of wetlands and restoration of 1.53 acres (75% mitigation credit) of wetland transitional habitats. Non-native vegetation was removed from the canyon, followed by revegetation with native southern willow scrub and wetland transitional species. The total area of habitat enhancement runs the entire canyon bottom and encompasses more than 13.5 acres. Exotic species targeted for eradication include: salt cedar (*Tamarix* sp.), myoporum (*Myoporum laetum*), Brazilian pepper tree, pampas grass, Mexican fan palm, and eucalyptus.

The site completed the 5-year long-term maintenance and monitoring period in March 2013. The site currently supports target native cover of approximately 100%, exceeding the year 5 goal of 90%. Regulatory sign-off and approval for the project was received in the summer of 2013. The site is continuing to mature with dense thickets of vegetation found throughout the riparian corridor. Trees within the site continue to mature with some individuals exceeding 30 feet in height, and the understory is well developed with a diverse variety of herbs and shrubs. Very few non-native species were observed throughout the site, and were removed and treated during annual maintenance this year.

Mitigation Credits			
Habitat Type	Acres	Assigned	Balance
Southern Willow Scrub (Enhancement)	8.74	2.13	6.61









## Tecolote Canyon Mitigation Project

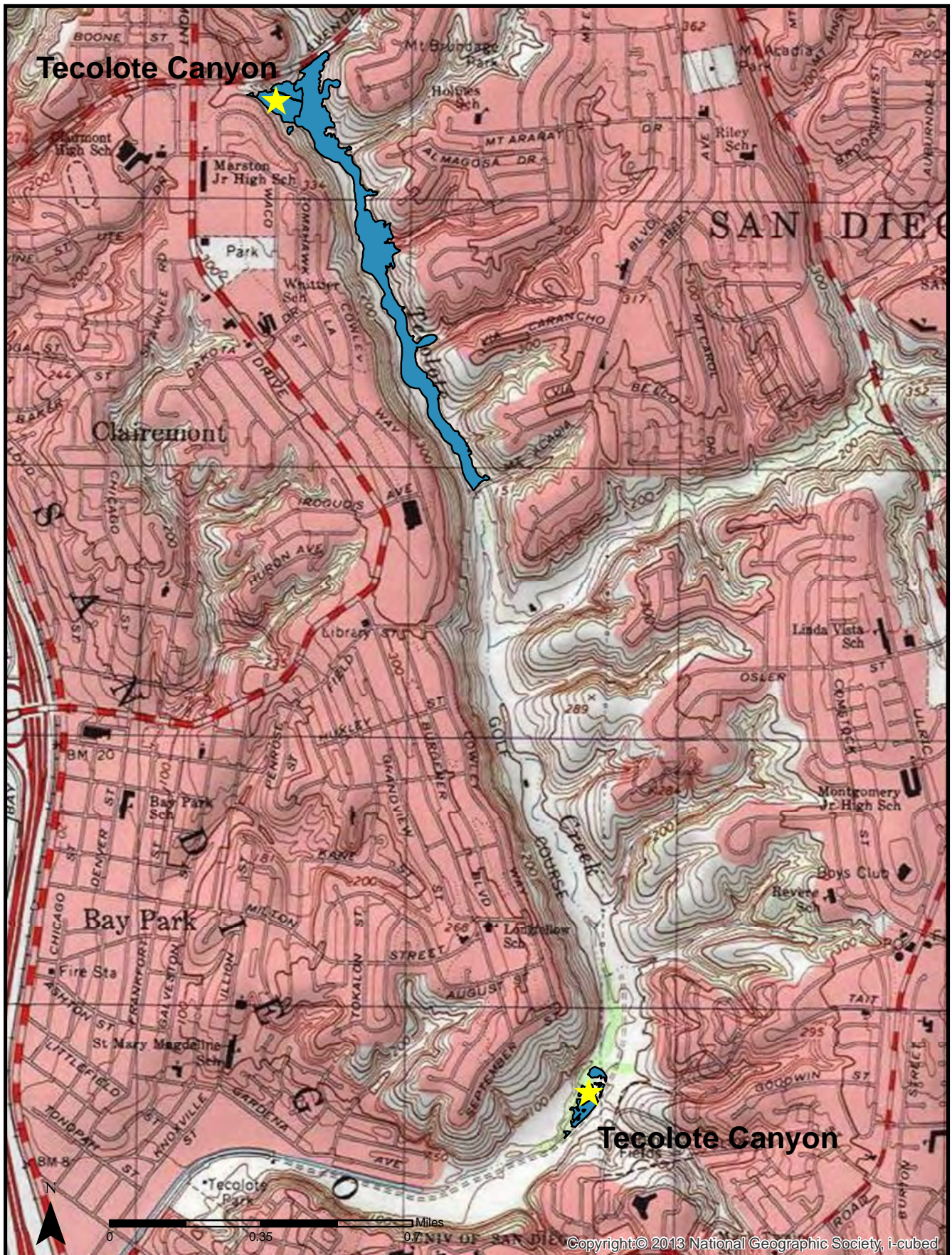
The Tecolote Canyon Mitigation Project provides mitigation for impacts associated with projects within Tecolote, Mt. Elbrus, East Clairemont, and Manning Canyons. The Balboa site is located south of Balboa Avenue, and the Grove site is located south of the Tecolote Golf Course and north of the University of San Diego (Figure 7).

The project includes the creation of 1.61 acres of wetland habitat (southern willow scrub, southern cottonwood willow riparian forest, and oak riparian forest) and restoration of 3.37 acres upland habitat (Diegan coastal sage scrub & native grassland). Construction was initiated in February 2007 and the 5-year maintenance and monitoring period began in January 2008. The 5-year success criteria of 80% coverage of wetland vegetation transects has been met and 75% coverage of upland vegetation transects has been exceeded for the project. The site completed its 5-year maintenance and monitoring in the early part of 2013 and has received regulatory sign-off. A qualitative review of the site in spring of 2017 estimated vegetative cover to be approximately 90-100% in the Diegan coastal sage scrub habitats, and 75-100% in the riparian areas. Numerous bird species were observed within the site during the annual assessment including a pair of California gnatcatchers.

Mitigation Credits			
Habitat Type	Acres	Assigned	Balance
Riparian Forest (Creation)	1.19	0.80	0.39
Southern Willow Scrub (Creation)	0.42	0.41	0.01
Diegan Coastal Sage Scrub (Tier II)	3.30	3.25	0.05
Native Grassland (Tier I)	0.07	0.06	0.01









## San Diego River Wetland Creation Project

The San Diego River Wetland Creation Project is located on a Public Utilities owned parcel located immediately adjacent to the San Diego River, north of Camino Del Rio North, west of I-15, and east of Mission Center Parkway in the Mission Valley Community of the City of San Diego (Figure 8).

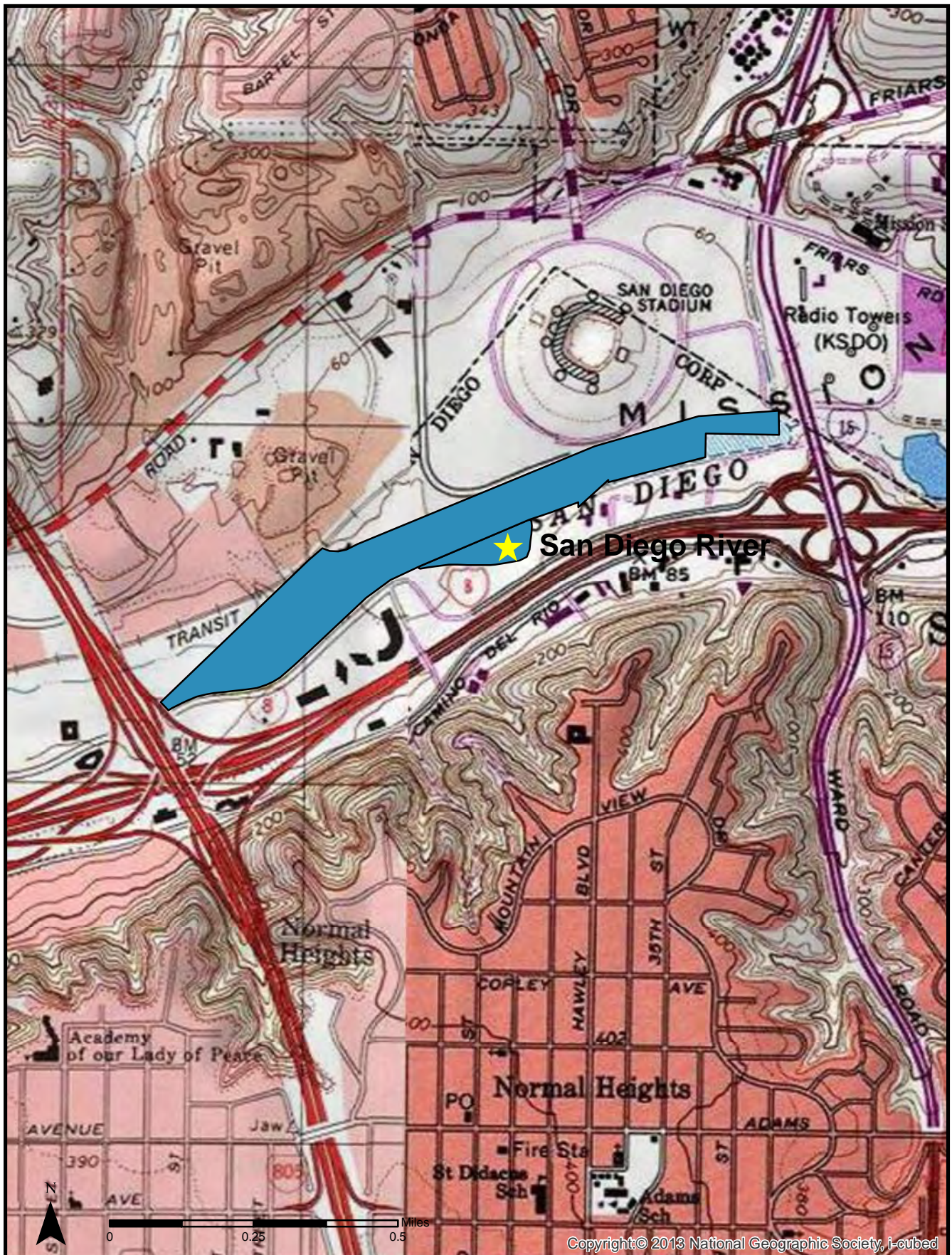
The site includes the creation of 3.43 acres of native riparian habitat and approximately 2 acres of Diegan coastal sage scrub habitat. The project site was graded in the fall of 2005 to create a basin along the southern bank of the San Diego River. The long-term maintenance, monitoring, and reporting program started June 14,



2006 and the site successfully completed 5-years of maintenance and monitoring in June of 2011. Native vegetation at the site continues to mature with trees reaching heights of 25-30 feet, and total vegetative cover approaching 100%. The site supports a well-developed understory of juncus (*Juncus* spp.), rose, and mulefat (*Baccharis salicifolia*). Non-native annuals, primarily sweet clover, were observed sporadically throughout the site, with the highest concentrations occurring on the western end. As part of long term management of the site, these areas were treated and supplemental native seed installed. The site will continue to receive semi-annual to quarterly maintenance to help ensure native habitat continues to mature and increase in spatial coverage. Trash from nearby illegal encampments continues to be removed from the site and adjacent areas, the City continues to remove encampments from the area as they are identified. During the 2017 site assessment a number of songbirds and animal tracks were observed within the site. The most notable observation was the identification a Least Bell's vireo (*Vireo bellii pusillus*) nest within the site, which successfully produced three fledglings. This is the second year in a row a vireo nest has been observed within the site.

Mitigation Credits			
Habitat Type	Acres	Assigned	Balance
Riparian Forest (Creation)	3.43	2.19	1.24





Copyright © 2013 National Geographic Society, i-cubed



## Los Peñasquitos North Wetland Creation Project

The Los Peñasquitos North Wetland Creation Project is located in the City of San Diego's Los Peñasquitos Canyon Preserve in the community of Peñasquitos, just north of the Los Peñasquitos Creek (Figure 9).



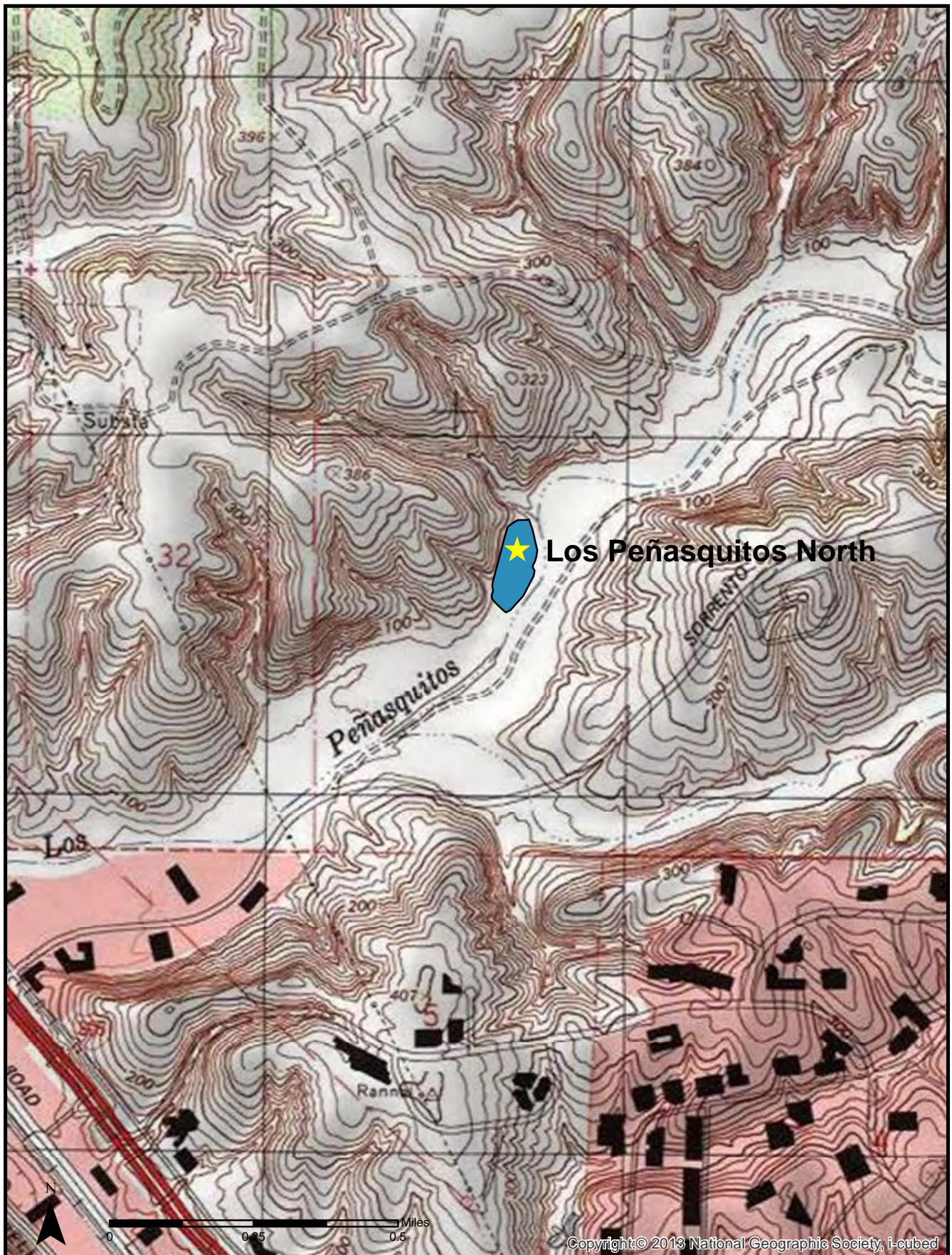
The project includes the creation of 3.8 acres of wetland habitat, including 3.15 acres of southern willow scrub, 0.43 acres of cottonwood/sycamore

woodland, and 0.22 acres of freshwater marsh. The site also includes one acre of Diegan coastal sage scrub habitat to serve as a buffer on the north edge of the site. Regulatory sign-off and approval for the project was received in the spring of 2012.

The site was assessed in April 2017 and appeared in good condition. Evidence of high water flows through the site were observed with the presence of debris and a well-defined rack line. This year a number of willow and cottonwood saplings were observed throughout the site. The site continues to mature with vegetative cover approaching 100% and willows reaching heights of 25 to 35 feet. No trash or debris or unauthorized trails were observed onsite. The site meets the 5<sup>th</sup> year success standard with over 90% target vegetative cover. Vegetation within the wetland habitat is predominately spiny rush (*Juncus acutus*), deer grass (*Muhlenbergia rigens*) and various species of willows. With increased rain this year, non-native annual weeds, primarily sweet clover, have increased in coverage compared with previous years. Non-native vegetation will be treated and removed from the site throughout the year as part of long term monitoring and maintenance.

Mitigation Credits			
Habitat Type	Acres	Assigned	Balance
Freshwater Marsh (Creation)	0.22	0.22	0
Riparian Woodland (Creation)	0.43	0.43	0
Southern Willow Scrub (Creation)	3.15	2.95	0.2
Diegan Coastal Sage Scrub (Tier II)	1.03	1.03	0







## Lake Murray Mitigation Project

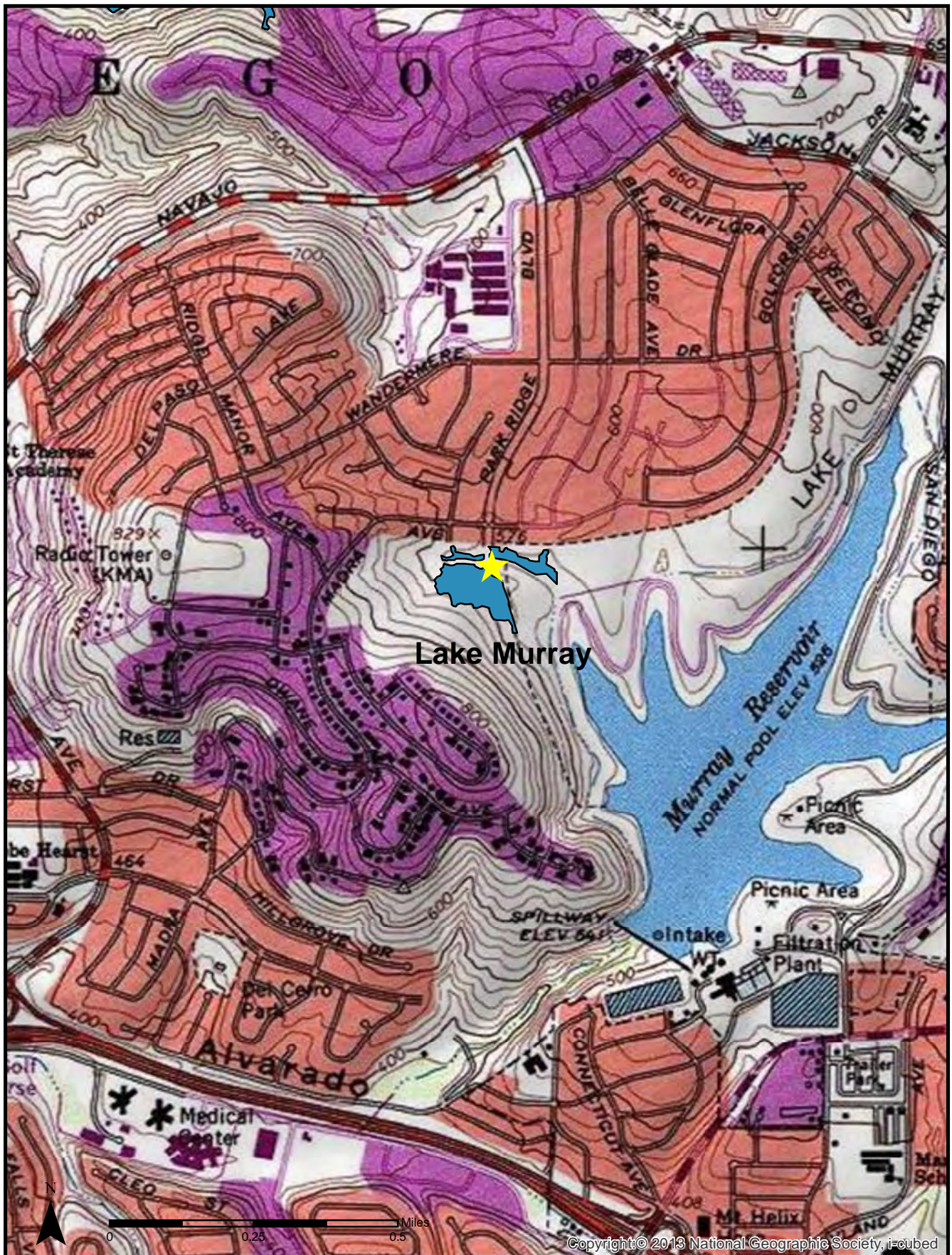
The Lake Murray Mitigation Project is in the City of San Diego's Mission Trails Regional Park. It is located in the area just west of Lake Murray in the Del Cerro neighborhood of the Navajo Community (Figure 10). The mitigation site includes 2.5 acres of wetland enhancement (southern willow scrub habitat) and just over 5.2 acres of upland restoration area (Diegan coastal sage scrub). Official sign-off was received from all of the regulatory agencies by December 2011.

The annual assessment survey was conducted May 13, 2016 to assess the current condition of the mitigation site. Fifth year success criteria required an average combined cover of 90% for the upland restoration and wetland enhancement areas. The wetland enhancement area exceeds 100% native cover throughout most of the defined enhancement site. The wetland over story continues to mature, increasing in density and height with species such as Fremont cottonwood (*Populus fremontii*), Western sycamore (*Platanus racemosa*), and various types of willows reaching heights of 40 feet or more. The understory is diverse with species such as spiny rush, spike sedge (*Carex nardina*) evening primrose (*Oenothera elata*), San Diego marsh elder, and broad-leaved cattail (*Typha latifolia*). Species found within the Diegan coastal sage scrub include California sagebrush, lemonade berry (*Rhus integrifolia*), flattop buckwheat (*Erigeron fasciculatum*), laurel sumac (*Malosoma laurina*), and black sage (*Salvia mellifera*). As part of the annual maintenance effort this year, non-native vegetation was treated and removed from the site. Maintenance was primarily focused in the edges of the upland areas. Numerous bird species were observed throughout the site including multiple coveys of California quail (*Callipepla californica*).

Mitigation Credits			
Habitat Type	Acres	Assigned	Balance
Southern Willow Scrub (Enhancement)	2.5	1.53	0.97
Diegan Coastal Sage Scrub (Tier II)	5.2	4.89	0.31







**Figure 10**  
 Lake Murray Mitigation Site  
 Vicinity Map



## El Rancho Peñasquitos Wetland Enhancement Project

The mitigation site is located along Los Peñasquitos Canyon approximately 0.5 mile west of Black Mountain Road in the vicinity of the historically designated Johnson Taylor Adobe of Rancho de los Peñasquitos (City of San Diego HRB Site #75). The site is within the MHPA on County and City of San Diego Open Space Land.

The El Rancho Project included enhancement of 5.53 acres of southern cottonwood willow riparian forest, by eradicating targeted non-native species. Project efforts began March 26, 2006 and regulatory sign-off was received in early 2010. This project treated 6,720 non-native plants, targeted species included Canary Island date palm, Mexican Fan Palm, Eucalyptus, Peruvian pepper tree (*Schinus terebinthifolius*), Brazilian pepper tree, and edible fig (*Ficus carica*).

The El Rancho Peñasquitos Wetland Enhancement Project has met the success criteria outlined in the Conceptual Mitigation Plan. Many of the larger treated plants have begun to deteriorate and decompose, allowing for the establishment of native species in their direct vicinity. Park and Recreation has taken over long term management of the site and manages the land consistent with the Multiple Species Conservation Plan which includes targeting the treatment or removal of invasive exotics as part of routine park management. During the 2017 assessment, no target exotic species were identified within the site.

Mitigation Credits			
Habitat Type	Acres	Assigned	Balance
Riparian Forest (Enhancement)	5.53	4.69	0.84









## Otay Mesa Upland Mitigation Bank

The Otay Mesa Mitigation Bank is located in the Otay Mesa community of the City of San Diego and occurs within the MHPA. The mitigation site is located on undeveloped land that is surrounded by other City of San Diego Park and Recreation Open Space lands and federal land holdings along the U.S /Mexico border. Five habitat types are found onsite and include maritime succulent scrub, non-native grasslands, ruderal, disturbed habitat, and vernal pool. During the 2017 annual monitoring visit it was documented that all of the fencing installed in February 2014 was intact and functioning as intended. Areas where fencing had been installed and dirt roads closed exhibited additional new growth this season which primarily consisted of *Erodium* sp., *Bromus* sp., and *Avena barbata*. Additional fencing was installed this year by the Park and Recreation Department on City owned land surrounding the mitigation bank to help further reduce unauthorized off-road vehicle activity.

Sensitive plant species present onsite include San Diego button-celery (*Eryngium aristulatum* var. *parishii*), variegated dudleya (*Dudleya variegata*), snake cholla (*Opuntia parryi serpentina*), San Diego barrel cactus (*Ferocactus viridescens*), San Diego bur-sage (*Ambrosia chenopodiifolia*), south coast saltbush (*Atriplex pacifica*), and San Diego county viguiera (*Viguiera laciniata*). Notable birds species observed in 2017 within the site include California gnatcatcher. Notable animal species observed include black tailed jackrabbit (*Lepus californicus*) and orange-throated whiptail (*Aspidoscelis hyperythra*).

Mitigation Credits			
Habitat Type	Acres	Assigned	Balance
Maritime Succulent Scrub (Tier I)	45.43	33.92	11.51







Copyright: © 2013 National Geographic Society, i-cubed



## Stadium Wetland Mitigation Project

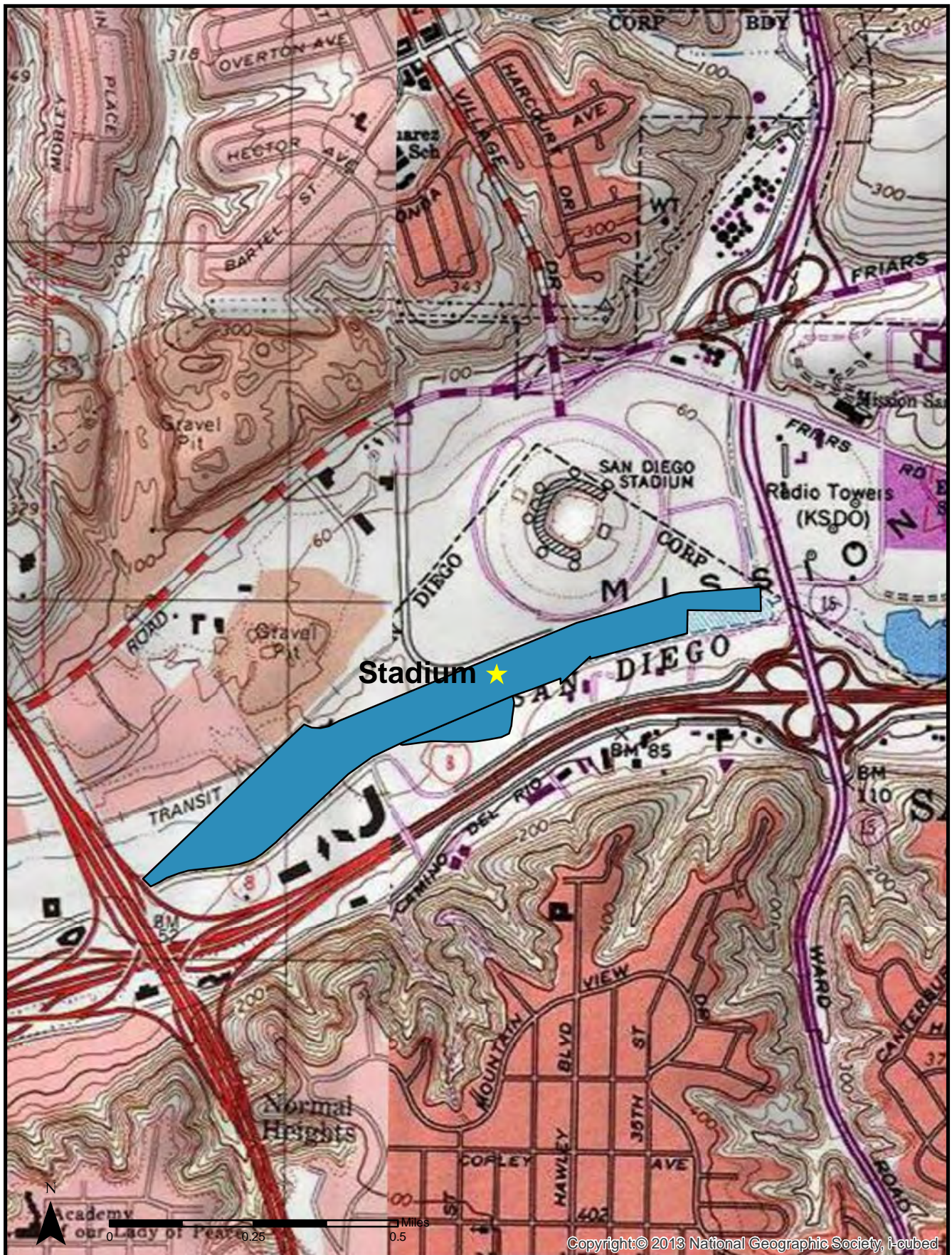
The Stadium Wetland Mitigation Project is located within the floodplain of the San Diego River between I-15 and I-805. The site is approximately 57 acres and was dominated by a high number of non-native species including giant reed (*Arrundo donax*), Peruvian pepper tree, Brazilian pepper tree, pampas grass, Canary Island date palm, and eucalyptus. This project will restore native habitat to the area by removing targeted non-native species, installing native plants, and maintaining and monitoring the site for a minimum of 5-years.

Work at the Stadium Wetland Mitigation Project started August 2016 with the initial cleanup and removal of illegal encampments. Construction started December 2016, and included removal of all non-native vegetation, installation of the temporary irrigation system, installation of fencing, and installation of native container plants. During this year, over 200,000lbs of trash has been removed from the project area, and over 27 acres of monoculture stands of invasive species have been removed. Construction work is expected to be completed by late summer, with the final installation of container plants and seeding of the site. Following completion of construction, the site will enter the maintenance and monitoring phase, and will be maintained for over five years.

This site has the potential to provide high quality habitat for a number of regionally sensitive species including least Bell's Vireo, southwestern willow flycatcher (*Empidonax traillii extimus*), western pond turtle (*Actinemys marmorata*), yellow billed cuckoo (*Coccyzus americanus*), and two-striped garter snake (*Thamnophis hammondi*), and also improve water quality, and functionality of the San Diego River.









---

**ATTACHMENT A**  
**25 MONTH REVEGETATION AND RESTORATION PROJECTS STATUS TABLE**









**Canyon Restoration/Revegetation Projects (2012-2017)**  
**June 2017**

**Active Projects**

<b>Project</b>	<b>Revegetation or Restoration</b>	<b>Size (acre)</b>	<b>Start of 25 Months</b>	<b>Seeding Date</b>	<b>Planting Date</b>	<b>End of 25 Months</b>	<b>PM</b>	<b>Status</b>
Mission Gorge Pipe Protection	Restoration	0.07	11/1/2013	N/A	N/A	12/1/2015	Balo	Achieved Final Success Standards – Additional time for re-establishment of willows after Park Trail Maintenance within Restoration area.
Three Waters Inspection (Water)	Restoration	0.03	11/6/2014	9/17/2014	11/6/2014	11/6/2017	Adleberg	36 Month Maintenance and Monitoring
Conquistador Water Break (Water)	Restoration	0.03	11/20/2014	11/20/2014	N/A	12/20/2016	Paver	Achieved Final Success Standards – Submit Notice of Completion
Buchanan Emergency	Reveg/Rest	0.8	1/12/2015	2/2014	1/2015	2/12/2017	Adleberg	Achieved Final Success Standards – Submit Notice of Completion
Nobel Drive MH 97	Revegetation	0.004	2/27/2015	N/A	N/A	3/27/2017	Paver	Achieved Final Success Standards – Submit Notice of Completion
West SD River Sewer Abandonment	Restoration	0.01	2/27/2015	2/27/2015	2/27/2015	3/27/2017	Frick	Achieved Final Success Standards – Submit Notice of Completion
Shepherd Canyon Water Emerg (Water)	Restoration	0.057	3/6/2015	2/27/2015	3/6/2015	4/6/2017	Smith	Achieved Final Success Standards – Submit Notice of Completion
Manzanita Break III (Water)	Restoration	0.02	2/13/2015	11/2/2015	N/A	3/13/2017	Paver	Achieved Final Success Standards – Submit Notice of Completion
Sonico Spot Repair	Revegetation	0.02	5/21/15	5/21/15	N/A	6/21/17	Frick	Achieved Final Success Standards – Submit Notice of Completion
Potomac Water Break (Water)	Revegetation	0.03	6/02/2015	6/02/15	N/A	7/02/2017	Frick	25 Month Monitoring
South Chollas	Reveg/Rest	0.4	9/1/15	3/2016	1/7/2016	10/1/17	Tran	25 Month Maintenance and Monitoring
East Shepherd Emergency (Water)	Restoration	<0.01	8/9/2015	10/30/2015	N/A	9/9//2017	Paver	25 Month Monitoring
Emerald Hill Stand Pipe (Water)	Revegetation	0.3	8/20/2015	4/20/2015	N/A	9/20/2017	Paver	25 Month Monitoring
Murphy Canyon MH114	Revegetation	0.03	8/27/2015	N/A	N/A	9/27/2017	Paver	25 Month Monitoring
10325 Roselle Street Emergency (Water)	Revegetation	0.02	10/2015	TBD	N/A	11/2019	Adleberg	25 Month Monitoring
4497 Revillo Drive Sewer Repair	Revegetation	0.03	7/28/2015	7/28/2015	N/A	8/28/2017	Frick	25 Month Monitoring
4th Ave. & Quince St. (Water)	Revegetation	0.01	8/24/2015	N/A	N/A	9/24/2017	Frick	25 Month Monitoring
PS 45 Emergency	Restoration	<0.01	11/16/2015	11/16/2015	N/A	12/16/2017	Paver	25 Month Monitoring
Alvarado Ct Sewer Emergency	Restoration	<0.01	2/27/2016	2/27/2016	N/A	3/27/2018	Lavan	25 Month Monitoring
El Camino South	Revegetation	<0.01	1/2016	N/A	N/A	2/2019	Adleberg	25 Month Monitoring
Switzer Canyon	Revegetation	<0.01	4/22/2016	4/22/2016	N/A	5/22/2019	Adleberg	25 Month Monitoring
AWPF North Pueblo	Revegetation	<0.01	4/19/2016	N/A	N/A	5/19/2019	Adleberg	25 Month Monitoring
Mission Valley Canyon Sewer Repair	Revegetation	0.001	5/2016	10/2015	11/2016	6/2018	Lavan	25 Month Monitoring
Sorrento Valley Water Main Leak Emergency Repair (Water)	Reveg/Rest	0.006	1/2017	1/2017	N/A	2/2019	Adleberg	25 Month Monitoring
Point Loma Sludge Pipeline Assessment Friars Road	Revegetation	<0.01	7/08/2016	N/A	N/A	8/2019	Adleberg	25 Month Monitoring
Home Ave TS LTA (Ash Canyon)	Revegetation	0.130	9/23/2016	N/A	N/A	10/23/2018	Paver	25 Month Monitoring
32 <sup>nd</sup> Street LTA	Revegetation	0.166	3/8/17	3/8/17	N/A	5/8/2019	Tran	25 Month Monitoring
Alta La Jolla Water Break (Water)	Restoration	0.172	1/10/2017	10/11/2016	1/10/2017	2/10/2019	Frick	25 Month Maintenance and Monitoring
Mt Elbrus LTA	Restoration	0.021	7/2017	9/25/2017	9/18/2017	8/1/2019	Tran	25 Month Monitoring; Preparing SOW for restoration areas
Trojan Pipeline Valve Repair Emerg (Water)	Revegetation	0.02	4/21/2017	N/A	N/A	5/21/2019	Paver	25 Month Monitoring
Central Tecolote Sewer Break Emergency	Restoration	0.32	5/19/2016	2/19/2016	5/19/2016	6/19/2018	Smith	25 Month Maintenance and Monitoring
Rancho Capistrano Bend WMB Emergency	Restoration	0.01	6/05/2017	N/A	6/05/2017	7/05/2019	Frick	25 Month Maintenance and Monitoring

Completed Projects					
Canyon/Project	Revegetation or Restoration	Project Initiation	Project Completion	PM	
Fairway Spot Repairs –La Jolla	Revegetation	1/1/2015	2/1/2017	Paver	
8 <sup>th</sup> Ave Sewer Pipe Repair	Revegetation	10/29/2014	11/29/2016	Paver	
Tecolote Golf Course Water Pipe Repair	Restoration	10/1/2014	11/1/2016	Paver	
Poe St Pipe Repair	Revegetation	9/12/2014	10/12/2016	Paver	
Buchanan Canyon MH 31	Restoration	9/2012	7/10/2017	Adleberg	
Otay Pipe Protection	Restoration	11/2013	9/28/2016	Lavan	
Rancho Mission LT Streambed	Reveg/Rest	3/2014	9/28/2016	Lavan	
Hawk Street Slope Repair (Water)	Revegetation	2/28/2014	9/28/2016	Smith	
PS 77 Force Main Inspection	Restoration	3/10/2014	9/28/2016	Smith	
Washington Creek Path Maint	Revegetation	5/27/2014	9/28/2016	Lavan	
Manzanita Water Break II (Water)	Restoration	6/19/2014	9/28/2016	Paver	
Famosa Slough Pipe Repair	Revegetation	11/15/2013	12/15/2015	Paver	
Spruce Mh 220 Emergency	Revegetation	11/25/2013	12/25/2015	Paver	
Mission Center Canyon	Restoration	4/29/2011	1/27/2016	Tran	
Snead Ave MH Raising	Revegetation	11/21/2012	7/13/2015	Balo	
Fay Ave/ Draper Street	Revegetation	6/1/2013	7/1/2015	Adleberg	
Ocean Blvd Pipe Removal	Restoration	2/15/2013	6/19/2015	Paver	
36-inch Water Pipe Repair Black Mountain	Revegetation	5/13/2014	6/19/2015	Paver	
Middle Rose MH 160 and Lower MH 9	Restoration	12/5/2012	4/16/2015	VanEvery	
Casita Way Sewer Repairs	Revegetation	11/4/2012	2/29/2015	Smith	
Mission Ave Sewer Spot Repair	Revegetation	11/21/2012	2/29/2015	Adleberg	
Manzanita/Lex Water Break	Restoration	11/29/2012	2/29/2015	Paver	
Manzanita Sewer Emergency	Revegetation	12/5/2012	2/29/2015	Paver	
Stevenson MH 257 Emergency	Revegetation	12/6/2012	2/29/2015	Paver	
Wellington Spot Repairs	Revegetation	10/14/2013	2/29/2015	Paver	
Alta View Water Emergency (Water)	Restoration	7/31/2012	10/28/2014	Adleberg	
Imperial and Woodman	Revegetation	9/2012	10/28/2014	Adleberg	
Euclid and Menlo Restoration	Restoration	11/16/2011	8/28/2014	Smith	
Lakeside Ave Emergency	Revegetation/Restoration	4/15/2012	8/28/2014	Paver	
Rose (MH 476)	Revegetation/Restoration	11/2008	6/28/2014	Paver	
Rose Sinkhole	Revegetation/Restoration	5/23/2011	6/28/2014	Paver	
Hotel Circle South Emergency	Restoration	11/9/2011	6/28/2014	Paver	
Chollas YMCA	Revegetation	1/18/2012	6/28/2014	Paver	
Keighley Street	Revegetation	12/9/2011	2/2014	Balo	
Nobel Drive Sewer Repair	Restoration	2/25/2013	2/2014	Paver	
Lexington Water Emer (Water)	Restoration	1/2011	1/2014	Balo	
Dulzura Flume (Water)	Restoration	9/10/2013	1/2014	Balo	
Upas Street	Revegetation	9/29/2011	1/2014	Smith	
Dwane and Elaine	Restoration	6/29/2011	9/2013	Smith	
Admiral Baker	Revegetation	7/21/2011	9/2013	Balo	
East Tecolote	Restoration	11/24/2010	7/2013	White	
Carmel Valley Rd (Water)	Revegetation	5/20/2011	7/2013	Balo	
Central Tecolote MH 159	Revegetation	5/9/2011	7/2013	Balo	
Plaza Ridge (Water)	Revegetation	1/19/2011	5/2013	Smith	
33 <sup>rd</sup> and Maple	Revegetation	3/16/2011	5/2013	Smith	
Lake Murray (Water)	Restoration	1/2011	3/2013	Balo	
San Clemente Emergency	Revegetation	1/2011	3/2013	Balo	
San Clemente MH 4 Access	Revegetation	2/2011	3/2013	Balo	
Menlo and Redwood	Restoration	11/2010	3/2013	Smith	
Rancho Mission Slope	Restoration	6/10/2010	10/2012	Balo	
Lake Hodges	Restoration	7/1/2010	10/2012	Domasco	
Oklahoma Street	Restoration	5/3/2010	8/2012	Domasco	
Lopez MH 102	Restoration	5/2010	8/2012	Domasco	
Valetta Street	Revegetation	5/3/2010	8/2012	Santos	
PS 30	Restoration	4/20/2010	5/20/2012	Van Every	
South Juniper	Reveg/Rest	11/2009	2/9/2012	Domasco	



**ATTACHMENT B MITIGATION  
SUMMARY TABLE**





# Mitigation Site Details



Mitigation Site	Mitigation Type	Habitat	USACE	CDFW	City	MHPA	Coastal	Park	Acres	Used	Free	
<b>Penasquitos</b>												
Canyon View (Penasquitos Upland)	Upland Restoration	Coastal Sage Scrub (CSS)	✗	✗	✓	✗	✗	✗	6.4900	1.6005	4.8895	●
		Native Grassland (NG)	✗	✗	✓	✗	✗	✗	0.8900	0.0200	0.8700	●
Central Tecolote Enhancement/Mitigation	Upland Restoration	Diegan Coastal Sage Scrub (DCSS)	✗	✗	✓	✗	✗	✗	2.0790	0.6180	1.4610	●
		Native Grassland (NG)	✗	✗	✓	✗	✗	✗	1.6400	0.1040	1.5360	●
	Wetland Enhancement	Riparian Forest (RF)	✗	✓	✓	✗	✗	✗	6.5040	1.1874	5.3166	●
		Riparian Forest (RF)	✓	✓	✓	✗	✗	✗	1.5600	0.8852	0.6748	●
El Cuervo Norte	Wetland Creation/Restoration	Riparian Forest (RF)	✓	✓	✓	✗	✗	✗	0.7200	0.6370	0.0830	●
	Wetland Enhancement	Riparian Forest (RF)	✓	✓	✓	✗	✗	✗	0.6800	0.6690	0.0110	●
El Rancho (Penasquitos Enhancement)	Wetland Enhancement	Riparian Forest (RF)	✓	✓	✓	✗	✗	✗	5.5300	4.6868	0.8432	●
Los Penasquitos North	Upland Restoration	Diegan Coastal Sage Scrub (DCSS)	✗	✗	✓	✓	✓	✓	1.0300	1.0250	0.0050	●
	Wetland Creation/Restoration	Freshwater Marsh (FM)	✓	✓	✓	✓	✓	✓	0.2200	0.2200	0.0000	●
		Riparian Woodland (RW)	✓	✓	✓	✓	✓	✓	0.4300	0.4300	0.0000	●
		Southern Willow Scrub (SWS)	✓	✓	✓	✓	✓	✓	3.1500	2.9510	0.1990	●
Penasquitos Eucalyptus Removal	Wetland Creation/Restoration	Riparian Forest (RF)	✓	✓	✓	✗	✗	✗	0.3100	0.3100	0.0000	●
Rose Canyon Wetland and Upland	Upland Restoration	Coastal Sage Scrub (CSS)	✗	✗	✓	✓	✗	✓	4.7500	2.4580	2.2920	●
		Native Grassland (NG)	✗	✗	✓	✓	✗	✓	0.2800	0.0870	0.1930	●
	Wetland Creation/Restoration	Riparian Forest (RF)	✓	✓	✓	✓	✗	✓	0.6200	0.5704	0.0496	●
		Riparian Forest (RF)	✓	✓	✓	✓	✗	✓	2.4200	2.1270	0.2930	●
		Riparian Forest (RF)	✗	✓	✓	✓	✗	✓	2.0100	0.4937	1.5163	●
	Wetland Enhancement	Riparian Forest (RF)	✗	✓	✓	✓	✗	✓	0.6100	0.5517	0.0583	●
San Clemente Wetland and Upland	Upland Restoration	Coast Live Oak Woodland (CLOW)	✗	✗	✓	✓	✗	✓	0.3900	0.1890	0.2010	●
		Coastal Sage Scrub (CSS)	✗	✗	✓	✓	✗	✓	2.4200	1.5555	0.8645	●
	Wetland Creation/Restoration	Emergent Wetland (EW)	✓	✓	✓	✓	✗	✓	0.2000	0.0000	0.2000	●
		Riparian Forest (RF)	✓	✓	✓	✓	✗	✓	0.8800	0.7590	0.1210	●

San Clemente Wetland and Upland	Wetland Creation/Restoration	Riparian Forest (RF)	✗	✓	✓	✓	✗	✓	1.7600	1.2280	0.5320	●
		Streambed (STREAMBED)	✓	✓	✓	✓	✗	✓	0.0200	0.0130	0.0070	●
Tecolote - Tree of Heaven removal	Wetland Enhancement	Riparian Forest (RF)	✓	✓	✓	✗	✗	✗	0.2500	0.2500	0.0000	●
Tecolote Canyon Wetland and Upland	Upland Restoration	Coastal Sage Scrub (CSS)	✗	✗	✓	✓	✗	✓	3.3000	3.2578	0.0422	●
		Native Grassland (NG)	✗	✗	✓	✓	✗	✓	0.0700	0.0560	0.0140	●
	Wetland Creation/Restoration	Riparian Forest (RF)	✓	✓	✓	✗	✗	✗	1.1900	0.8020	0.3880	●
		Southern Willow Scrub (SWS)	✓	✓	✓	✗	✗	✗	0.4200	0.4140	0.0060	●
San Diego												
Camino del Rio North - San Diego River Creation	Wetland Creation/Restoration	Riparian Forest (RF)	✓	✓	✓	✗	✗	✗	3.4300	2.1929	1.2371	●
Lake Murray	Upland Restoration	Diegan Coastal Sage Scrub (DCSS)	✗	✗	✓	✗	✗	✗	5.2000	4.8972	0.3028	●
	Wetland Enhancement	Southern Willow Scrub (SWS)	✓	✓	✓	✗	✗	✗	2.5000	1.5329	0.9671	●
Rancho Mission Enhancement	Wetland Enhancement	Southern Willow Scrub (SWS)	✓	✓	✓	✗	✗	✗	8.7400	2.1322	6.6078	●
Stadium	Upland Restoration	Diegan Coastal Sage Scrub (DCSS)	✗	✗	✓	✓	✗	✗	1.1000	0.0000	1.1000	●
	Wetland Creation/Restoration	Southern Riparian Woodland (SRW)	✓	✓	✓	✓	✗	✗	15.3000	0.0000	15.3000	●
		Southern Riparian Woodland (SRW)	✗	✓	✓	✓	✗	✗	5.5000	0.0000	5.5000	●
	Wetland Enhancement	Freshwater Marsh (FM)	✓	✓	✓	✓	✗	✗	0.2000	0.0000	0.2000	●
		Southern Riparian Woodland (SRW)	✓	✓	✓	✓	✗	✗	24.0000	0.0000	24.0000	●
		Southern Riparian Woodland (SRW)	✗	✓	✓	✓	✗	✗	8.0000	0.0000	8.0000	●
Tijuana												
Marron Valley Cornerstone Lands Conservation Bank	Upland Bank	Diegan Coastal Sage Scrub (DCSS)	✗	✗	✓	✓	✗	✗	7.5450	6.8030	0.7420	●
Otay Mesa Mitigation Bank	Upland Bank	Maritime Succulent Scrub (MSS)	✗	✗	✓	✓	✗	✗	13.2400	1.7280	11.5120	●



---

**ATTACHMENT C**  
**MITIGATION ASSIGNMENT SUMMARY TABLE**







# Mitigation by Mitigation Site

**Mitigation Site:** <All Mitigation Sites>  
**Mitigation Type:** <All Mitigation Types>  
**Project:** <All Projects>



Mitigation Type	Mitigation Habitat	Project	Impact Habitat	Mitigation Acres	In/Adjacent/Out Watershed	In/Out Canyon	In/Out Project	Impact Date
Camino del Rio North - San Diego River Creation 2.1929								
				<b>Wetland</b>	<b>2.1929</b>			
Wetland Creation/Restoration	Riparian Forest (RF)	15 West and Elanus	Southern Willow Scrub (SWS)	0.0500	In	Out	Out	12/19/2003
		32nd Street - Huckleberry LT	Riparian Scrub (RS)	0.0070	Ajacent	Out	Out	12/07/2016
		54th & Maisel	Freshwater Marsh (FM)	0.0080	In	Out	Out	07/05/2001
		60th Street Pipe Relocation/Permanent Access	Disturbed Wetland (DWET)	0.0050	In	Out	Out	
		Alvarado Court Emergency Sewer Repair	Freshwater Marsh (FM)	0.0800	In	Out	Out	10/05/1998
		Alvarado Court Emergency Sewer Repair	Southern Willow Scrub (SWS)	0.0060	In	Out	Out	10/05/1998
		Alvarado Court Emergency Sewer Repair	Southern Willow Scrub (SWS)	0.0100	In	Out	Out	10/05/1998
		Alvarado Court Sewer Crossing	Southern Willow Scrub (SWS)	0.0050	In	Out	Out	
		Alvarado Court Sewer Crossing	Non-Vegetated Channel (NVC)	0.0020	In	Out	Out	
		Alvarado LT	Mule Fat Scrub (MFS)	0.0020	In	Out	Out	
		Alvarado LT	Freshwater Marsh (FM)	0.0060	In	Out	Out	
		Alvarado LT	Southern Willow Scrub (SWS)	0.0250	In	Out	Out	
		Alvarado LT	Southern Willow Scrub (SWS)	0.0010	In	Out	Out	
		Alvarado LT	Non-Vegetated Channel (NVC)	0.0350	In	Out	Out	
		Alvarado Trunk Sewer	Disturbed Wetland (DWET)	0.0220	In	Out	Out	
		Buchanan	Disturbed Wetland (DWET)	0.3220	In	Out	Out	04/30/2002
		Buchanan	Southern Willow Scrub (SWS)	0.0108	In	Out	Out	04/30/2002
		Buchanan Group Job 689	Non-Vegetated Channel (NVC)	0.0080	In	Out	Out	
		Buchanan Group Job 689	Non-Vegetated Channel (NVC)	0.0010	In	Out	Out	
		Buchanan LT	Disturbed Wetland (DWET)	0.0600	In	Out	Out	
		Buchanan Sewer Blockage Emergency	Southern Willow Scrub (SWS)	0.0080	In	Out	Out	

Mitigation Type	Mitigation Habitat	Project	Impact Habitat	Mitigation Acres	In/Adjacent/Out Watershed	In/Out Canyon	In/Out Project	Impact Date
Camino del Rio North - San Diego River Creation 2.1929								
Wetland Creation/Restoration	Riparian Forest (RF)	Buchanan Sewer Blockage Emergency	Southern Willow Scrub (SWS)	0.0030	In	Out	Out	
		Chocolate Access MH 273 to 267	Emergent Wetland (EW)	0.0064	Ajacent	Out	Out	07/31/2014
		Chocolate Canyon Emergency Access MH 245	Emergent Wetland (EW)	0.0030	Ajacent	Out	Out	07/31/2014
		Chollas Dam Vegetation Removal	Freshwater Marsh (FM)	0.0220	Ajacent	Out	Out	
		Chollas Exposed Water Main Repair	Riparian Scrub (RS)	0.0140	Ajacent	Out	Out	
		Dove Canyon Emergency Repair	Non-Vegetated Channel (NVC)	0.0010	In	Out	Out	
		Dove Canyon Pipe Encasement	Non-Vegetated Channel (NVC)	0.0005	In	Out	Out	11/09/2015
		Elanus & Murray Canyons (I-15 & Clairemont Mesa Bl	Southern Willow Scrub (SWS)	0.0070	In	Out	Out	12/11/2002
		Elanus (I-15 & Clairemont Mesa Blvd) LT	Emergent Wetland (EW)	0.0050	In	Out	Out	
		Emergency Repairs in South Juniper Canyon at Manhole 274	Non-Vegetated Channel (NVC)	0.0020	Ajacent	Out	Out	09/12/2014
		Euclid & Menlo (3343 Menlo Ave Spalsh Apron	Non-Vegetated Channel (NVC)	0.0040	Ajacent	Out	Out	
		Euclid & Menlo (47th & Thorn Sewer Maint & Emerg)	Disturbed Wetland (DWET)	0.0800	Ajacent	Out	Out	02/01/2004
		Federal & Chollas	Disturbed Wetland (DWET)	0.0008	Ajacent	Out	Out	
		Fox Canyon (University & 49th) Emergency Repair	Non-Vegetated Channel (NVC)	0.0020	Ajacent	Out	Out	
		Hopkins	Disturbed Wetland (DWET)	0.0200	Out	Out	Out	03/17/2004
		Hopkins (Calle Abajo Emergency)	Non-Vegetated Channel (NVC)	0.0020	Out	Out	Out	04/03/2002
		Huckleberry (32nd St Canyon Emergency Maintenance)	Disturbed Wetland (DWET)	0.0400	Ajacent	Out	Out	07/22/2003
		I-15 & Adams	Emergent Wetland (EW)	0.0040	In	Out	Out	05/06/2004
		Junipero Serra (Jackson/Mission Gorge Emergency)	Southern Willow Scrub (SWS)	0.0100	In	Out	Out	11/13/2002
		Junipero Serra (Mission Gorge Emergency Repair)	Riparian Scrub (RS)	0.0300	In	Out	Out	12/11/2001
		Junipero Serra (Superior Ready Mix Emergency Repai	Riparian Scrub (RS)	0.3000	In	Out	Out	01/26/2002
		Junipero Serra (Superior Ready Mix Emergency Repai	Southern Cottonwood-Willow Riparian Forest (SCWRF)	0.0900	In	Out	Out	01/26/2002
		Lake Murray Emergency Cleaning	Southern Willow Scrub (SWS)	0.0100	In	Out	Out	12/01/2002
		Lake Murray Trunk Sewer and Permanent Access Path	Southern Willow Scrub (SWS)	0.1900	In	Out	Out	09/01/2004



Mitigation Type	Mitigation Habitat	Project	Impact Habitat	Mitigation Acres	In/Adjacent/Out Watershed	In/Out Canyon	In/Out Project	Impact Date
Camino del Rio North - San Diego River Creation 2.1929								
Wetland Creation/Restoration	Riparian Forest (RF)	Lake Murray Trunk Sewer and Permanent Access Path	Southern Willow Scrub (SWS)	0.0100	In	Out	Out	09/01/2004
		Lake Murray Trunk Sewer and Permanent Access Path	Freshwater Marsh (FM)	0.0700	In	Out	Out	09/01/2004
		Lexington Long-Term Access	Non-Vegetated Channel (NVC)	0.0800	Adjacent	Out	Out	
		Lexington Pipe Encasement Emergency 2016	Non-Vegetated Channel (NVC)	0.0005	In	Out	Out	02/18/2016
		Lexington Pipe Encasement Emergency 2016	Non-Vegetated Channel (NVC)	0.0005	In	Out	Out	02/19/2016
		Manhole 101 Emergency Repairs	Waters of the U.S.	0.0040	In	Out	Out	01/02/2016
		Market & Euclid (MH 88 Repair at Encanto Creek)	Southern Willow Scrub (SWS)	0.0030	Adjacent	Out	Out	
		Mission Center Canyon B	Non-Vegetated Channel (NVC)	0.0350	In	Out	Out	
		Mission Center Canyon B	Riparian Scrub (RS)	0.0250	In	Out	Out	
		Mission Center Canyon B	Emergent Wetland (EW)	0.0200	In	Out	Out	
		Mission Center Canyon B	Disturbed Wetland (DWET)	0.0140	In	Out	Out	
		Mission Center Canyon Emergency Sewer Repair	Southern Willow Scrub (SWS)	0.0030	In	Out	Out	
		Mission Center Canyon Emergency Sewer Repair	Southern Willow Scrub (SWS)	0.0010	In	Out	Out	
		Mission Center Canyon Emergency Sewer Repair	Freshwater Marsh (FM)	0.0160	In	Out	Out	
		Mission Center Canyon Emergency Sewer Repair	Freshwater Marsh (FM)	0.0070	In	Out	Out	
		Mission Center MH 101 Protection and Access Path Repairs	Non-Vegetated Channel (NVC)	0.0040	In	Out	Out	01/09/2016
		Mission Center Rd. (Kearny Mesa)	Southern Willow Scrub (SWS)	0.0070	In	Out	Out	01/13/2002
		Murphy Canyon MH114 Locate and Raise	Southern Willow Scrub (SWS)	0.0140	In	Out	Out	08/24/2015
		Murphy Canyon TS Access and Repair	Freshwater Marsh (FM)	0.0340	In	Out	Out	06/20/2014
		Norfolk (Fairmont & Montezuma)	Southern Willow Scrub (SWS)	0.0030	In	Out	Out	04/22/2002
		Norfolk LT	Non-Vegetated Channel (NVC)	0.0050	In	Out	Out	
		Otay Valley TS Pipe Protection	Non-Vegetated Channel (NVC)	0.0180	Out	Out	Out	
		Presidio (Palm Cyn) GJ665	Riparian Scrub (RS)	0.1650	In	Out	Out	
		Presidio (Palm Cyn) GJ665	Non-Vegetated Channel (NVC)	0.0017	In	Out	Out	
		Presidio (Palm Cyn) GJ665	Non-Vegetated Channel (NVC)	0.0120	In	Out	Out	

Mitigation Type	Mitigation Habitat	Project	Impact Habitat	Mitigation Acres	In/Adjacent/Out Watershed	In/Out Canyon	In/Out Project	Impact Date
Camino del Rio North - San Diego River Creation 2.1929								
Wetland Creation/Restoration	Riparian Forest (RF)	Rancho Mission (Mission Gorge Canyon, Conestoga Co	Disturbed Wetland (DWET)	0.0050	In	Out	Out	02/07/2002
		Rancho Mission LT	Non-Vegetated Channel (NVC)	0.0070	In	Out	Out	
		Rancho Mission LT	Southern Willow Scrub (SWS)	0.0070	In	Out	Out	
		San Diego Mission Rd Emergency	Southern Willow Scrub (SWS)	0.0100	In	Out	Out	
		San Diego Mission Rd Emergency	Freshwater Marsh (FM)	0.0100	In	Out	Out	
		Shawn Canyon Pipe Repair Emergency FSN 32934	Non-Vegetated Channel (NVC)	0.0015	In	Out	Out	03/28/2016
		Shepherd	Southern Willow Scrub (SWS)	0.0100	In	Out	Out	02/01/2003
		Shepherd LT	Disturbed Wetland (DWET)	0.0150	In	Out	Out	
		Shepherd LT	Riparian Scrub (RS)	0.0200	In	Out	Out	
		Shepherd LT	Riparian Woodland (RW)	0.0300	In	Out	Out	
		Valencia Canyon Emergency Repair & Maintenance	Mule Fat Scrub (MFS)	0.0040	Ajacent	Out	Out	01/25/2003
		Washington Creek Canyon Manhole 85 Emergency	Non-Vegetated Channel (NVC)	0.0002	Ajacent	Out	Out	02/09/2016
Canyon View (Penasquitos Upland) 1.6205								
				Upland	1.6205			
Upland Restoration	Coastal Sage Scrub (CSS)	Alta La Jolla Main Break Emergency	Diegan Coastal Sage Scrub (DCSS)	0.1170	In	Out	Out	09/22/2016
		Lopez Canyon LT	Non-Native Grassland (NNG)	0.0130	In	Out	Out	
		Lopez Canyon LT	Diegan Coastal Sage Scrub (DCSS)	0.3000	In	Out	Out	
		Lopez Emergency Cleaning	Diegan Coastal Sage Scrub (DCSS)	0.5100	In	Out	Out	
		Lopez Emergency Cleaning	Non-Native Grassland (NNG)	0.0500	In	Out	Out	
		Lopez Emergency Cleaning	Southern Mixed Chaparral (SMC)	0.0100	In	Out	Out	
		Lopez MH 102 Emergency	Diegan Coastal Sage Scrub (DCSS)	0.0220	In	Out	Out	
		Manhole 477 Raise	Diegan Coastal Sage Scrub (DCSS)	0.0040	In	Out	Out	
		Penasquitos Lagoon Mh 190 Access	Diegan Coastal Sage Scrub (DCSS)	0.0060	In	Out	Out	
		Penasquitos Views Trunk Sewer	Non-Native Grassland (NNG)	0.5200	In	In	Out	
		Pottery Canyon Sewer Spill Emergency	Coastal Sage Scrub (CSS)	0.0100	In	Out	Out	06/13/2017
		PS64 Dual Force Main Condition Assessment	Non-Native Grassland (NNG)	0.0025	In	Out	Out	



Mitigation Type	Mitigation Habitat	Project	Impact Habitat	Mitigation Acres	In/Adjacent/Out Watershed	In/Out Canyon	In/Out Project	Impact Date
Canyon View (Penasquitos Upland) 1.6205								
Upland Restoration	Coastal Sage Scrub (CSS)	PS64 Dual Force Main Condition Assessment	Diegan Coastal Sage Scrub (DCSS)	0.0150	In	Out	Out	
		Pump Station 45 Pipe Repair Emergency	Diegan Coastal Sage Scrub (DCSS)	0.0120	In	Out	Out	11/10/2015
		Pump Station 77 Line Stop Manhole Access	Diegan Coastal Sage Scrub (DCSS)	0.0090	Ajacent	Out	Out	09/06/2016
	Native Grassland (NG)	Lopez Emergency Cleaning	Scrub Oak Chaparral (SOC)	0.0200	In	Out	Out	
Central Tecolote Enhancement/Mitigation 2.7946								
				Upland	0.7220			
Upland Restoration	Diegan Coastal Sage Scrub (DCSS)	East Tecolote Canyon Pipe Encasemt Protection Proj	Non-Native Grassland (NNG)	0.0200	In	Out	Out	10/04/2010
		Tecolote LT	Diegan Coastal Sage Scrub (DCSS)	0.4580	In	In	Out	
		Tecolote LT	Southern Mixed Chaparral (SMC)	0.0500	In	In	Out	
		Tecolote LT	Poison Oak Scrub (POS)	0.0900	In	In	Out	
	Native Grassland (NG)	East Tecolote Canyon Pipe Encasemt Protection Proj	Coast Live Oak Woodland (CLOW)	0.0220	In	Out	Out	10/04/2010
		East Tecolote Canyon Pipe Encasemt Protection Proj	Native Grassland (NG)	0.0020	In	Out	Out	10/04/2010
		Tecolote LT	Maritime Succulent Scrub (MSS)	0.0200	In	In	Out	
		Tecolote LT	Coast Live Oak Woodland (CLOW)	0.0600	In	In	Out	
				Wetland	2.0726			
Wetland Enhancement	Riparian Forest (RF)	Central Tecolote Sewer Break Emergency	Southern Riparian Forest (SRF)	0.0460	In	In	Out	01/26/2016
		Central Tecolote Sewer Break Emergency	Southern Willow Scrub (SWS)	0.0020	In	In	Out	01/26/2016
		Central Tecolote Sewer Break Emergency	Southern Riparian Forest (SRF)	0.2220	In	In	Out	01/26/2016
		East Tecolote (East Clairemont)	Southern Coast Live Oak Riparian Forest (SCLORF)	0.0080	In	Out	Out	01/08/2002
		East Tecolote (East Clairemont)	Southern Willow Scrub (SWS)	0.0001	In	Out	Out	01/08/2002
		East Tecolote (East Clairemont) LT	Southern Riparian Forest (SRF)	0.0080	In	Out	Out	
		East Tecolote (East Clairemont) LT	Southern Willow Scrub (SWS)	0.0010	In	Out	Out	
		East Tecolote (East Clairemont) LT	Southern Willow Scrub (SWS)	0.0030	In	Out	Out	
		East Tecolote (East Clairemont) LT	Freshwater Marsh (FM)	0.0080	In	Out	Out	
		East Tecolote (East Clairemont) LT	Southern Riparian Forest (SRF)	0.1220	In	Out	Out	
		East Tecolote (East Clairemont) LT	Southern Riparian Forest (SRF)	0.0540	In	Out	Out	

Mitigation Type	Mitigation Habitat	Project	Impact Habitat	Mitigation Acres	In/Adjacent/Out Watershed	In/Out Canyon	In/Out Project	Impact Date
Central Tecolote Enhancement/Mitigation 2.7946								
Wetland Enhancement	Riparian Forest (RF)	East Tecolote (East Clairemont) LT Non-Vegetated Channel (NVC)		0.0020	In	Out	Out	
		East Tecolote (East Clairemont) LT Non-Vegetated Channel (NVC)		0.0010	In	Out	Out	
		East Tecolote (East Clairemont) LT Freshwater Marsh (FM)		0.0010	In	Out	Out	
		East Tecolote (East Clairemont) LT Freshwater Marsh (FM)		0.0020	In	Out	Out	
		East Tecolote (East Clairemont) LT Southern Willow Scrub (SWS)		0.0100	In	Out	Out	
		East Tecolote (East Clairemont) LT Southern Willow Scrub (SWS)		0.0170	In	Out	Out	
		East Tecolote Canyon Pipe Encasemt Protection Proj	Southern Riparian Forest (SRF)	0.0600	In	Out	Out	10/04/2010
		East Tecolote Canyon Pipe Encasemt Protection Proj	Southern Willow Scrub (SWS)	0.0360	In	Out	Out	10/04/2010
		East Tecolote Canyon Pipe Encasemt Protection Proj	Open Water (OW)	0.0230	In	Out	Out	10/04/2010
		East Tecolote Emergency MH 218	Southern Riparian Forest (SRF)	0.0960	In	Out	Out	
		East Tecolote LT (Phase 1)	Southern Riparian Forest (SRF)	0.0120	In	Out	Out	
		East Tecolote Manholes 223 and 224 Emergency	Southern Riparian Forest (SRF)	0.0680	In	Out	Out	
		East Tecolote Manholes 223 and 224 Emergency	Southern Willow Scrub (SWS)	0.0330	In	Out	Out	
		East Tecolote Manholes 223 and 224 Emergency	Non-Vegetated Channel (NVC)	0.0150	In	Out	Out	
		East Tecolote Manholes 223 and 224 Emergency	Freshwater Marsh (FM)	0.0390	In	Out	Out	
		Park Mesa Way	Southern Willow Scrub (SWS)	0.1500	In	Out	Out	01/13/2000
		Tecolote (including Mt. Elbrus)	Southern Coast Live Oak Riparian Forest (SCLORF)	0.0400	In	In	Out	11/18/2002
		Tecolote (including Mt. Elbrus)	Southern Willow Scrub (SWS)	0.0200	In	In	Out	11/18/2002
		Tecolote (including Mt. Elbrus)	Southern Willow Scrub (SWS)	0.1100	In	In	Out	11/18/2002
		Tecolote 8 inch CI Sewer Main Replacement	Southern Willow Scrub (SWS)	0.0030	In	In	Out	
		Tecolote 8 inch CI Sewer Main Replacement	Southern Willow Scrub (SWS)	0.0020	In	In	Out	
		Tecolote Emergency Pipe Repair (Crossing)	Southern Coast Live Oak Riparian Forest (SCLORF)	0.0040	In	In	Out	
		Tecolote Emergency Pipe Repair (Crossing)	Southern Willow Scrub (SWS)	0.0080	In	In	Out	
		Tecolote Emergency Pipe Repair (Crossing)	Emergent Wetland (EW)	0.0020	In	In	Out	
		Tecolote LT	Mule Fat Scrub (MFS)	0.0100	In	In	Out	



Mitigation Type	Mitigation Habitat	Project	Impact Habitat	Mitigation Acres	In/Adjacent/Out Watershed	In/Out Canyon	In/Out Project	Impact Date
Central Tecolote Enhancement/Mitigation 2.7946								
Wetland Enhancement	Riparian Forest (RF)	Tecolote LT	Non-Vegetated Channel (NVC)	0.0200	In	In	Out	
		Tecolote LT	Southern Willow Scrub (SWS)	0.0300	In	In	Out	
		Tecolote LT	Southern Riparian Forest (SRF)	0.1836	In	In	Out	
		Tecolote LT	Southern Riparian Forest (SRF)	0.4984	In	In	Out	
		Tecolote MH 101 Emergency	Mule Fat Scrub (MFS)	0.0005	In	In	Out	
		Tecolote Mt. Ashmun Pipe Protection Emergency	Non-Vegetated Channel (NVC)	0.0070	In	In	Out	01/17/2008
		Tecolote Mt. Ashmun Pipe Protection Emergency	Riparian Forest (RF)	0.0200	In	In	Out	01/17/2008
		Tecolote Mt. Ashmun Pipe Protection Erosion Contro	Riparian Forest (RF)	0.0040	In	In	Out	
		Tecolote Mt. Ashmun Pipe Protection Erosion Contro	Southern Willow Scrub (SWS)	0.0010	In	In	Out	
		Tecolote Pipe Repair Near Manhole 346	Southern Riparian Forest (SRF)	0.0700	In	In	Out	
El Cuervo Norte 1.3060								
				Wetland	1.3060			
Wetland Creation/Restoration	Riparian Forest (RF)	Acuna	Southern Willow Scrub (SWS)	0.0800	In	Out	Out	07/05/2002
		Acuna	Mule Fat Scrub (MFS)	0.0020	In	Out	Out	07/05/2002
		Acuna	Disturbed Wetland (DWET)	0.0400	In	Out	Out	07/05/2002
		Acuna Street Emergency	Southern Willow Scrub (SWS)	0.0400	In	Out	Out	07/06/1998
		Penasquitos Bluffs (Finger Canyon Emergency)	Southern Willow Scrub (SWS)	0.0200	In	Out	Out	11/01/2000
		Penasquitos Bluffs (Finger Canyon Emergency)	Coastal and Valley Freshwater Marsh (CVFM)	0.0600	In	Out	Out	11/01/2000
		San Clemente (Emergency Repairs Combined)	Mule Fat Scrub (MFS)	0.0200	In	Out	Out	09/17/2001
		San Clemente (Emergency Repairs Combined)	Riparian Woodland (RW)	0.0520	In	Out	Out	09/17/2001
		San Clemente (Emergency Repairs Combined)	Southern Willow Scrub (SWS)	0.0030	In	Out	Out	09/17/2001
		Stevenson	Southern Willow Scrub (SWS)	0.2800	In	Out	Out	10/01/2001
		Stevenson	Mule Fat Scrub (MFS)	0.0200	In	Out	Out	10/01/2001
		Torreyana Sewer Repair	Non-Vegetated Channel (NVC)	0.0200	In	Out	Out	10/01/2001
Wetland Enhancement	Riparian Forest (RF)	Acuna	Mule Fat Scrub (MFS)	0.0020	In	Out	Out	07/05/2002
		Acuna	Disturbed Wetland (DWET)	0.0400	In	Out	Out	07/05/2002

Mitigation Type	Mitigation Habitat	Project	Impact Habitat	Mitigation Acres	In/Adjacent/Out Watershed	In/Out Canyon	In/Out Project	Impact Date
<b>El Cuervo Norte 1.3060</b>								
Wetland Enhancement	Riparian Forest (RF)	Acuna	Southern Willow Scrub (SWS)	0.0800	In	Out	Out	07/05/2002
		Acuna Street Emergency	Southern Willow Scrub (SWS)	0.0400	In	Out	Out	07/06/1998
		Penasquitos Bluffs (Finger Canyon Emergency)	Southern Willow Scrub (SWS)	0.0200	In	Out	Out	11/01/2000
		Penasquitos Bluffs (Finger Canyon Emergency)	Coastal and Valley Freshwater Marsh (CVFM)	0.0600	In	Out	Out	11/01/2000
		San Clemente (Emergency Repairs Combined)	Mule Fat Scrub (MFS)	0.0200	In	Out	Out	09/17/2001
		San Clemente (Emergency Repairs Combined)	Riparian Woodland (RW)	0.1040	In	Out	Out	09/17/2001
		San Clemente (Emergency Repairs Combined)	Southern Willow Scrub (SWS)	0.0030	In	Out	Out	09/17/2001
		Stevenson	Southern Willow Scrub (SWS)	0.2800	In	Out	Out	10/01/2001
		Stevenson	Mule Fat Scrub (MFS)	0.0200	In	Out	Out	10/01/2001

**El Rancho (Penasquitos Enhancement) 4.6868**

				<b>Wetland</b>	<b>4.6868</b>			
Wetland Enhancement	Riparian Forest (RF)	Acuna LT	Southern Willow Scrub (SWS)	0.0100	In	Out	Out	
		Balboa Terrace Trunk Sewer Replacement	Disturbed Wetland (DWET)	0.1070	In	Out	Out	09/16/2012
		Balboa Terrace Trunk Sewer Replacement	Freshwater Marsh (FM)	0.0160	In	Out	Out	09/16/2012
		Balboa Terrace Trunk Sewer Replacement	Mule Fat Scrub (MFS)	0.0220	In	Out	Out	09/16/2012
		Balboa Terrace Trunk Sewer Replacement	Non-Vegetated Channel (NVC)	0.0140	In	Out	Out	09/16/2012
		Balboa Terrace Trunk Sewer Replacement	Southern Willow Scrub (SWS)	0.0640	In	Out	Out	09/16/2012
		Balboa Terrace Trunk Sewer Replacement	Oak Riparian Forest (ORF)	0.0060	In	Out	Out	09/16/2012
		Balboa Terrace Trunk Sewer Replacement	Freshwater Marsh (FM)	0.0240	In	Out	Out	
		Black Mountain Road Finger Canyon	Freshwater Marsh (FM)	0.0060	In	In	Out	04/04/2003
		Carmel Valley Rd Emergency Water Break	Riparian Scrub (RS)	0.0520	In	Out	Out	
		Carmel Valley Rd Emergency Water Break	Southern Willow Scrub (SWS)	0.0160	In	Out	Out	
		Carroll and Mesa Rim	Southern Willow Scrub (SWS)	0.1500	In	Out	Out	06/02/2003
		Carroll and Mesa Rim	Southern Coast Live Oak Riparian Forest (SCLORF)	0.2000	In	Out	Out	06/02/2003



Mitigation Type	Mitigation Habitat	Project	Impact Habitat	Mitigation Acres	In/Adjacent/Out Watershed	In/Out Canyon	In/Out Project	Impact Date
El Rancho (Penasquitos Enhancement) 4.6868								
Wetland Enhancement	Riparian Forest (RF)	Carroll Canyon Emergency Sewer Repair	Southern Arroyo Willow Riparian Forest (SAWRF)	0.0600	In	Out	Out	02/26/2010
		Carroll Canyon Emergency Sewer Repair	Non-Vegetated Channel (NVC)	0.0400	In	Out	Out	02/26/2010
		Gesner/Huron	Riparian Woodland (RW)	0.1100	In	Out	Out	08/01/1998
		I-5/SR-52 Maintenance Project	Southern Willow Scrub (SWS)	0.0300	In	Out	Out	
		Lopez Canyon LT	Riparian Woodland (RW)	0.0150	In	Out	Out	
		Lopez Canyon LT	Southern Willow Scrub (SWS)	0.0400	In	Out	Out	
		Lopez Canyon LT MH 13 Access	Alkali Marsh (AM)	0.3000	In	Out	Out	
		Lopez Emergency Cleaning	Emergent Wetland (EW)	0.0010	In	Out	Out	
		Lopez Emergency Cleaning	Riparian Forest (RF)	0.0080	In	Out	Out	
		Lopez Emergency Cleaning	Mule Fat Scrub (MFS)	0.0400	In	Out	Out	
		Lopez Emergency Cleaning	Southern Willow Scrub (SWS)	0.0800	In	Out	Out	
		Lower Rose Canyon Emergency Repairs (MH 15)	Southern Willow Scrub (SWS)	0.3200	In	Out	Out	05/04/2005
		Manhole 477 Raise	Freshwater Marsh (FM)	0.0090	In	Out	Out	
		Middle Rose Cyn MH 160 Emergency	Southern Willow Scrub (SWS)	0.0200	In	Out	Out	12/01/2011
		Monte Verde Sewer Improvements	Southern Riparian Forest (SRF)	0.0400	In	Out	Out	
		Monte Verde Sewer Improvements	Southern Riparian Forest (SRF)	0.0400	In	Out	Out	
		Old Rose Canyon Sewer Relocation Project	Southern Willow Scrub (SWS)	0.0400	In	Out	Out	02/08/2011
		Old Rose Canyon Sewer Relocation Project	Mule Fat Scrub (MFS)	0.0070	In	Out	Out	02/08/2011
		Old Rose Canyon Sewer Relocation Project	Freshwater Marsh (FM)	0.0020	In	Out	Out	02/08/2011
		Park Mesa LT	Southern Willow Scrub (SWS)	0.0050	In	Out	Out	
		Park Mesa LT	Southern Willow Scrub (SWS)	0.0300	In	Out	Out	
		Penasquitos Bluffs LT	Alkali Marsh (AM)	0.0040	In	Out	Out	
		Penasquitos Bluffs LT	Alkali Marsh (AM)	0.0100	In	Out	Out	
		Penasquitos Bluffs LT	Southern Willow Scrub (SWS)	0.0030	In	Out	Out	
		Penasquitos Bluffs LT	Southern Willow Scrub (SWS)	0.0070	In	Out	Out	
		Penasquitos Bluffs LT	Freshwater Marsh (FM)	0.0140	In	Out	Out	
		Penasquitos Preserve (East of Black Mountain Road)	Southern Cottonwood-Willow Riparian Forest (SCWRF)	0.1800	In	In	Out	10/16/2003

Mitigation Type	Mitigation Habitat	Project	Impact Habitat	Mitigation Acres	In/Adjacent/Out Watershed	In/Out Canyon	In/Out Project	Impact Date
El Rancho (Penasquitos Enhancement) 4.6868								
Wetland Enhancement	Riparian Forest (RF)	Penasquitos Preserve LT	Southern Cottonwood-Willow Riparian Forest (SCWRF)	0.2400	In	In	Out	
		Penasquitos Preserve LT	Southern Coast Live Oak Riparian Forest (SCLORF)	0.1060	In	In	Out	
		Penasquitos Preserve LT	Mule Fat Scrub (MFS)	0.0320	In	In	Out	
		Penasquitos Preserve LT	Freshwater Marsh (FM)	0.0450	In	In	Out	
		Penasquitos Preserve LT	Coast Live Oak Woodland (CLOW)	0.0120	In	In	Out	
		Penasquitos Preserve LT	Non-Vegetated Channel (NVC)	0.0050	In	In	Out	
		Penasquitos View Emergency	Cismontane Alkali Marsh (CAM)	0.0020	In	Out	Out	08/18/2004
		Rose Canyon ER Repairs between 9/01 and 5/03	Non-Vegetated Channel (NVC)	0.0018	In	Out	Out	09/01/2001
		Rose Canyon ER Repairs between 9/01 and 5/03	Mule Fat Scrub (MFS)	0.0300	In	Out	Out	09/01/2001
		Rose Canyon ER Repairs between 9/01 and 5/03	Riparian Woodland (RW)	0.0400	In	Out	Out	09/01/2001
		Rose Canyon ER Repairs between 9/01 and 5/03	Southern Willow Scrub (SWS)	0.0300	In	Out	Out	09/01/2001
		San Clemente Canyon Access Path LT Project	Southern Coast Live Oak Riparian Forest (SCLORF)	0.6400	In	Out	Out	
		San Clemente Canyon Access Path LT Project	Southern Cottonwood-Willow Riparian Forest (SCWRF)	0.2660	In	Out	Out	
		San Clemente Emergency Sewer Encasement Repair	Southern Coast Live Oak Riparian Forest (SCLORF)	0.0400	In	Out	Out	12/13/2010
		Sorrento Valley Water Main Leak Emergency	Freshwater Marsh (FM)	0.0020	In	Out	Out	06/15/2016
		Sorrento Valley Water Main Leak Emergency	Southern Willow Scrub (SWS)	0.0100	In	Out	Out	10/23/2015
		Stevenson Long Term Access Project	Southern Willow Scrub (SWS)	0.0280	In	Out	Out	
		Stevenson Long Term Access Project	Mule Fat Scrub (MFS)	0.0850	In	Out	Out	
		Stevenson Long Term Access Project	Non-Vegetated Channel (NVC)	0.0280	In	Out	Out	
		Van Nuys Canyon Emergency Sewer Repair Project	Non-Vegetated Channel (NVC)	0.0200	In	Out	Out	12/31/2004
		Van Nuys Canyon MH # 91 Sewer Blockage	Non-Vegetated Channel (NVC)	0.1300	In	Out	Out	12/04/1996
		Van Nuys Canyon MH # 91 Sewer Blockage	Mule Fat Scrub (MFS)	0.2900	In	Out	Out	12/04/1996
		Van Nuys Canyon MHs 113, 114 and 93	Non-Vegetated Channel (NVC)	0.0030	In	Out	Out	12/15/2003



Mitigation Type	Mitigation Habitat	Project	Impact Habitat	Mitigation Acres	In/Adjacent/Out Watershed	In/Out Canyon	In/Out Project	Impact Date
EI Rancho (Penasquitos Enhancement) 4.6868								
Wetland Enhancement	Riparian Forest (RF)	Van Nuys Installation of 2 36-inch Pipe Culverts	Southern Willow Scrub (SWS)	0.0300	In	Out	Out	02/07/2001
		Van Nuys MH #114 Sewage Leak Investigation	Non-Vegetated Channel (NVC)	0.0030	In	Out	Out	04/04/2002
		Van Nuys MH #124 Sewer Leak	Non-Vegetated Channel (NVC)	0.0300	In	Out	Out	02/10/1998
		Van Nuys MH #92-76 Four Sewer Breaks (Upper Canyon	Mule Fat Scrub (MFS)	0.1460	In	Out	Out	08/04/2000
		Van Nuys MH #92-76 Four Sewer Breaks (Upper Canyon	Disturbed Wetland (DWET)	0.2500	In	Out	Out	08/04/2000
Lake Murray 6.4301								
Upland				4.8972				
Upland Restoration	Diegan Coastal Sage Scrub (DCSS)	32nd Street - Huckleberry LT	Non-Native Grassland (NNG)	0.0090	Ajacent	Out	Out	
		32nd Street - Huckleberry LT	Coastal Sage- Chaparral (CSC)	0.0020	Ajacent	Out	Out	12/07/2016
		Alvarado Court Emergency Sewer Repair	Diegan Coastal Sage Scrub (DCSS)	0.1000	In	Out	Out	10/05/1998
		Alvarado Court Emergency Sewer Repair	Broom Baccharis Scrub (BBS)	0.0300	In	Out	Out	10/05/1998
		Alvarado Court Emergency Sewer Repair	Diegan Coastal Sage Scrub (DCSS)	0.0600	In	Out	Out	10/05/1998
		Alvarado TS MH 459 and 458 Maintenance	Diegan Coastal Sage Scrub (DCSS)	0.0050	In	Out	Out	
		Buchanan Sewer Blockage Emergency	Diegan Coastal Sage Scrub (DCSS)	0.0320	In	Out	Out	
		Buchanan Sewer Blockage Emergency	Southern Mixed Chaparral (SMC)	0.0230	In	Out	Out	
		Cardinal Drive Sewer Emergency	Diegan Coastal Sage Scrub (DCSS)	0.0016	In	Out	Out	
		Chocolate Access MH 273 to 267	Chamise Chaparral (CC)	0.0020	Ajacent	Out	Out	07/31/2014
		Chocolate Canyon Emergency Access MH 245	Chamise Chaparral (CC)	0.0010	Ajacent	Out	Out	07/31/2014
		Florida Canyon	Diegan Coastal Sage Scrub (DCSS)	0.0100	Ajacent	Out	Out	02/28/2004
		Huckleberry (32nd & Beech)	Diegan Coastal Sage Scrub (DCSS)	0.0090	Ajacent	Out	Out	07/12/2001
		Huckleberry (32nd & Beech)	Non-Native Grassland (NNG)	0.0230	Ajacent	Out	Out	07/12/2001
		Huckleberry (32nd St Canyon Emergency Maintenance)	Non-Native Grassland (NNG)	0.0300	Ajacent	Out	Out	07/22/2003
		Hwy 163 (7th and Brookes 2004 Emergency Maint)	Non-Native Grassland (NNG)	0.0350	Ajacent	Out	Out	05/28/2004
		Hwy 163 Corridor (7th & Brookes 2002Emergency Repa	Non-Native Grassland (NNG)	0.0150	Ajacent	Out	Out	11/26/2003

Mitigation Type	Mitigation Habitat	Project	Impact Habitat	Mitigation Acres	In/Adjacent/Out Watershed	In/Out Canyon	In/Out Project	Impact Date
Lake Murray 6.4301								
Upland Restoration	Diegan Coastal Sage Scrub (DCSS)	Junipero Serra (Jackson/Mission Gorge Emergency)	Diegan Coastal Sage Scrub (DCSS)	0.0600	In	Out	Out	11/13/2002
		Lake Murray Emergency Cleaning	Diegan Coastal Sage Scrub (DCSS)	0.4700	In	In	Out	12/01/2002
		Lake Murray Emergency Cleaning	Diegan Coastal Sage Scrub (DCSS)	0.1700	In	In	Out	12/01/2002
		Lake Murray Emergency Cleaning	Non-Native Grassland (NNG)	0.0700	In	In	Out	12/01/2002
		Lake Murray Emergency Cleaning	Non-Native Grassland (NNG)	0.0300	In	In	Out	12/01/2002
		Lake Murray Trunk Sewer and Permanent Access Path	Diegan Coastal Sage Scrub (DCSS)	2.5700	In	In	Out	09/01/2004
		Lake Murray Trunk Sewer and Permanent Access Path	Diegan Coastal Sage Scrub (DCSS)	0.7500	In	In	Out	09/01/2004
		Lake Murray Trunk Sewer and Permanent Access Path	Non-Native Grassland (NNG)	0.0400	In	In	Out	09/01/2004
		Lake Murray Trunk Sewer and Permanent Access Path	Non-Native Grassland (NNG)	0.0100	In	In	Out	09/01/2004
		Lake Murray Trunk Sewer and Permanent Access Path	Broom Baccharis Scrub (BBS)	0.0500	In	In	Out	09/01/2004
		Lake Murray Trunk Sewer and Permanent Access Path	Broom Baccharis Scrub (BBS)	0.2800	In	In	Out	09/01/2004
		Mission Valley Canyon Sewer Lateral Repair	Diegan Coastal Sage Scrub (DCSS)	0.0006	In	Out	Out	09/16/2015
		Switzer MH 152 Access	Diegan Coastal Sage Scrub (DCSS)	0.0090	Ajacent	Out	Out	01/29/2014
		Wetland				1.5329		
Wetland Enhancement	Southern Willow Scrub (SWS)	32nd Street - Huckleberry LT	Riparian Scrub (RS)	0.0070	Ajacent	Out	Out	12/07/2016
		54th & Maisel	Freshwater Marsh (FM)	0.0080	In	Out	Out	07/05/2001
		60th Street Pipe Relocation/Permanent Access	Disturbed Wetland (DWET)	0.0050	In	Out	Out	
		Alvarado Court Emergency Sewer Repair	Freshwater Marsh (FM)	0.0800	In	Out	Out	10/05/1998
		Alvarado Court Emergency Sewer Repair	Non-Vegetated Channel (NVC)	0.0300	In	Out	Out	10/05/1998
		Alvarado Court Emergency Sewer Repair	Southern Willow Scrub (SWS)	0.0060	In	Out	Out	10/05/1998
		Alvarado Court Emergency Sewer Repair	Southern Willow Scrub (SWS)	0.0100	In	Out	Out	10/05/1998
		Chocolate Access MH 273 to 267	Emergent Wetland (EW)	0.0064	Ajacent	Out	Out	07/31/2014
		Chocolate Canyon Emergency Access MH 245	Emergent Wetland (EW)	0.0030	Ajacent	Out	Out	07/31/2014
		Chocolate Combined	Non-Vegetated Channel (NVC)	0.0080	Ajacent	Out	Out	08/13/2000
		Huckleberry (32nd & Beech)	Non-Vegetated Channel (NVC)	0.0050	Ajacent	Out	Out	07/12/2001



Mitigation Type	Mitigation Habitat	Project	Impact Habitat	Mitigation Acres	In/Adjacent/Out Watershed	In/Out Canyon	In/Out Project	Impact Date		
Lake Murray 6.4301										
Wetland Enhancement	Southern Willow Scrub (SWS)	Huckleberry (32nd & Beech)	Disturbed Wetland (DWET)	0.0070	Ajacent	Out	Out	07/12/2001		
		Hwy 163 Corridor (7th & Brookes 2002Emergency Repa	Non-Vegetated Channel (NVC)	0.0200	Ajacent	Out	Out	11/26/2003		
		Junipero Serra (Jackson/Mission Gorge Emergency)	Southern Willow Scrub (SWS)	0.0100	In	Out	Out	11/13/2002		
		Junipero Serra (Mission Gorge Emergency Repair)	Riparian Scrub (RS)	0.0300	In	Out	Out	12/11/2001		
		Junipero Serra (Superior Ready Mix Emergency Repai	Riparian Scrub (RS)	0.6000	In	Out	Out	01/26/2002		
		Junipero Serra (Superior Ready Mix Emergency Repai	Southern Cottonwood-Willow Riparian Forest (SCWRF)	0.1800	In	Out	Out	01/26/2002		
		Junipero Serra (Superior Ready Mix Emergency Repai	Non-Vegetated Channel (NVC)	0.0400	In	Out	Out	01/26/2002		
		Lake Murray Emergency Cleaning	Non-Vegetated Channel (NVC)	0.0100	In	In	Out	12/01/2002		
		Lake Murray Emergency Cleaning	Southern Willow Scrub (SWS)	0.0100	In	In	Out	12/01/2002		
		Lake Murray Trunk Sewer and Permanent Access Path	Southern Willow Scrub (SWS)	0.3000	In	In	Out	09/01/2004		
		Lake Murray Trunk Sewer and Permanent Access Path	Southern Willow Scrub (SWS)	0.0200	In	In	Out	09/01/2004		
		Lake Murray Trunk Sewer and Permanent Access Path	Non-Vegetated Channel (NVC)	0.0100	In	In	Out	09/01/2004		
		Lake Murray Trunk Sewer and Permanent Access Path	Freshwater Marsh (FM)	0.0700	In	In	Out	09/01/2004		
		Lexington Pipe Encasement Emergency 2016	Non-Vegetated Channel (NVC)	0.0005	In	Out	Out	02/19/2016		
		Mission Center Rd. (Kearny Mesa)	Southern Willow Scrub (SWS)	0.0070	In	Out	Out	01/13/2002		
		Switzer Canyon Emergency Sewer Repair Project	Non-Vegetated Channel (NVC)	0.0500	Ajacent	Out	Out	02/27/2002		
		Los Penasquitos North 4.6260								
		Upland				1.0250				
Upland Restoration	Diegan Coastal Sage Scrub (DCSS)	Los Penasquitos North Wetland Creation Project	Coastal Sage Scrub (CSS)	0.8200	In	In	In			
		Torreyana Sewer Repair	Diegan Coastal Sage Scrub (DCSS)	0.1300	In	Out	Out	10/01/2001		
		Torreyana Sewer Repair	Southern Mixed Chaparral (SMC)	0.0150	In	Out	Out	10/01/2001		
		Torreyana Sewer Repair	Diegan Coastal Sage Scrub (DCSS)	0.0600	In	Out	Out	10/01/2001		
Wetland				3.6010						
Wetland Creation/Restoration	Freshwater Marsh (FM)	Black Mountain Road Finger Canyon	Freshwater Marsh (FM)	0.0060	In	In	Out	04/04/2003		

Mitigation Type	Mitigation Habitat	Project	Impact Habitat	Mitigation Acres	In/Adjacent/Out Watershed	In/Out Canyon	In/Out Project	Impact Date
Los Penasquitos North 4.6260								
Wetland Creation/Restoration	Freshwater Marsh (FM)	Carmel Valley Rd Emergency Water Break	Riparian Scrub (RS)	0.0260	In	Out	Out	
		Lopez Canyon LT MH 13 Access	Alkali Marsh (AM)	0.1000	In	Out	Out	
		Lopez MH 102 Emergency	Non-Vegetated Channel (NVC)	0.0030	In	Out	Out	
		Lower Rose Creek Emergency Maintenance	Southern Willow Scrub (SWS)	0.0300	In	Out	Out	
		Penasquitos Preserve LT	Mule Fat Scrub (MFS)	0.0080	In	In	Out	
		Penasquitos Preserve LT	Freshwater Marsh (FM)	0.0450	In	In	Out	
		Penasquitos View Emergency	Cismontane Alkali Marsh (CAM)	0.0020	In	Out	Out	08/18/2004
	Riparian Woodland (RW)	Carroll and Mesa Rim	Riparian Woodland (RW)	0.4300	In	Out	Out	06/02/2003
	Southern Willow Scrub (SWS)	Acuna LT	Southern Willow Scrub (SWS)	0.0100	In	Out	Out	
		Carmel Valley Rd Emergency Water Break	Southern Willow Scrub (SWS)	0.0080	In	Out	Out	
		Carroll and Mesa Rim	Southern Willow Scrub (SWS)	0.1500	In	Out	Out	06/02/2003
		Carroll and Mesa Rim	Southern Coast Live Oak Riparian Forest (SCLORF)	0.1000	In	Out	Out	06/02/2003
		Carroll and Mesa Rim	Riparian Woodland (RW)	0.2900	In	Out	Out	06/02/2003
		Carroll and Mesa Rim	Mule Fat Scrub (MFS)	0.4400	In	Out	Out	06/02/2003
		Lopez Canyon LT	Riparian Woodland (RW)	0.0100	In	Out	Out	
		Lopez Canyon LT	Southern Willow Scrub (SWS)	0.0300	In	Out	Out	
		Lopez Canyon Manhole 102 Maintenance	Non-Vegetated Channel (NVC)	0.0010	In	Out	Out	
		Lopez Emergency Cleaning	Riparian Forest (RF)	0.0040	In	Out	Out	
		Lopez Emergency Cleaning	Mule Fat Scrub (MFS)	0.0400	In	Out	Out	
		Lopez Emergency Cleaning	Emergent Wetland (EW)	0.0010	In	Out	Out	
		Lopez Emergency Cleaning	Southern Willow Scrub (SWS)	0.0800	In	Out	Out	
		Lower Rose Creek Emergency Maintenance	Southern Willow Scrub (SWS)	0.7800	In	Out	Out	
		Manhole 477 Raise	Freshwater Marsh (FM)	0.0030	In	Out	Out	
		Park Mesa LT	Southern Willow Scrub (SWS)	0.0050	In	Out	Out	
		Park Mesa LT	Southern Willow Scrub (SWS)	0.0300	In	Out	Out	
		Park Mesa LT	Non-Vegetated Channel (NVC)	0.0060	In	Out	Out	
		Penasquitos Preserve (East of Black Mountain Road)	Southern Cottonwood-Willow Riparian Forest (SCWRF)	0.0900	In	In	Out	10/16/2003



Mitigation Type	Mitigation Habitat	Project	Impact Habitat	Mitigation Acres	In/Adjacent/Out Watershed	In/Out Canyon	In/Out Project	Impact Date
<b>Los Penasquitos North 4.6260</b>								
Wetland Creation/Restoration	Southern Willow Scrub (SWS)	Penasquitos Preserve LT	Southern Cottonwood-Willow Riparian Forest (SCWRF)	0.1200	In	In	Out	
		Penasquitos Preserve LT	Southern Coast Live Oak Riparian Forest (SCLORF)	0.0530	In	In	Out	
		Penasquitos Preserve LT	Coast Live Oak Woodland (CLOW)	0.0060	In	In	Out	
		Penasquitos Views Trunk Sewer	Southern Willow Scrub (SWS)	0.1920	In	In	Out	
		Sorrento Valley Water Main Leak Emergency	Southern Willow Scrub (SWS)	0.0050	In	Out	Out	10/23/2015
		Sorrento Valley Water Main Leak Emergency	Freshwater Marsh (FM)	0.0010	In	Out	Out	06/15/2016
		Van Nuys Canyon MH # 91 Sewer Blockage	Mule Fat Scrub (MFS)	0.0700	In	Out	Out	12/04/1996
		Van Nuys Installation of 2 36-inch Pipe Culverts	Southern Willow Scrub (SWS)	0.0300	In	Out	Out	02/07/2001
		Van Nuys MH #92-76 Four Sewer Breaks (Upper Canyon	Mule Fat Scrub (MFS)	0.1460	In	Out	Out	08/04/2000
		Van Nuys MH #92-76 Four Sewer Breaks (Upper Canyon	Disturbed Wetland (DWET)	0.2500	In	Out	Out	08/04/2000

**Marron Valley Cornerstone Lands Conservation Bank 6.8030**

**Upland 6.8030**

Upland Bank	Diegan Coastal Sage Scrub (DCSS)	45th & Boston	Non-Native Grassland (NNG)	0.0150	Out	Out	Out	
		45th & Boston	Non-Native Grassland (NNG)	0.0550	Out	Out	Out	
		54th & Maisel	Southern Mixed Chaparral (SMC)	0.0400	Out	Out	Out	07/05/2001
		60th Street Pipe Relocation/Permanent Access	Diegan Coastal Sage Scrub (DCSS)	0.0950	Out	Out	Out	
		60th Street Pipe Relocation/Permanent Access	Non-Native Grassland (NNG)	0.0240	Out	Out	Out	
		Alvarado LT	Chamise Chaparral (CC)	0.0850	Out	Out	Out	
		Alvarado LT	Diegan Coastal Sage Scrub (DCSS)	0.0360	Out	Out	Out	
		Alvarado LT	Diegan Coastal Sage Scrub (DCSS)	0.0030	Out	Out	Out	
		Alvarado LT	Southern Mixed Chaparral (SMC)	0.0010	Out	Out	Out	
		Alvarado LT	Non-Native Grassland (NNG)	0.0090	Out	Out	Out	
		Alvarado LT	Diegan Coastal Sage Scrub (DCSS)	0.0090	Out	Out	Out	
		Balboa Terrace Trunk Sewer Replacement	Diegan Coastal Sage Scrub (DCSS)	0.0390	Out	Out	Out	09/16/2012
		Balboa Terrace Trunk Sewer Replacement	Diegan Coastal Sage Scrub (DCSS)	0.3150	Out	Out	Out	09/16/2012

Mitigation Type	Mitigation Habitat	Project	Impact Habitat	Mitigation Acres	In/Adjacent/Out Watershed	In/Out Canyon	In/Out Project	Impact Date
Marron Valley Cornerstone Lands Conservation Bank 6.8030								
Upland Bank	Diegan Coastal Sage Scrub (DCSS)	Buchanan	Southern Mixed Chaparral (SMC)	0.1200	Out	Out	Out	04/30/2002
		Buchanan	Poison Oak Scrub (POS)	0.1300	Out	Out	Out	04/30/2002
		Buchanan	Diegan Coastal Sage Scrub (DCSS)	0.0400	Out	Out	Out	04/30/2002
		Buchanan (10th & Johnson Ave. Emergency Repair)	Diegan Coastal Sage Scrub (DCSS)	0.0300	Out	Out	Out	09/06/2002
		Buchanan (10th & Johnson Ave. Emergency Repair)	Diegan Coastal Sage Scrub (DCSS)	0.0600	Out	Out	Out	09/06/2002
		Buchanan (10th & Johnson Ave. Emergency Repair)	Diegan Coastal Sage Scrub (DCSS)	0.0300	Out	Out	Out	09/06/2002
		Buchanan (10th & Johnson Ave. Emergency Repair)	Diegan Coastal Sage Scrub (DCSS)	0.0100	Out	Out	Out	09/06/2002
		Buchanan (Highway 163 & Lincoln Street Emergency)	Southern Mixed Chaparral (SMC)	0.0540	Out	Out	Out	12/16/2003
		Buchanan (Highway 163 & Lincoln Street Emergency)	Diegan Coastal Sage Scrub (DCSS)	0.0180	Out	Out	Out	12/16/2003
		Buchanan LT	Poison Oak Scrub (POS)	0.0200	Out	Out	Out	
		Buchanan LT	Poison Oak Scrub (POS)	0.0060	Out	Out	Out	
		Buchanan LT	Southern Mixed Chaparral (SMC)	0.0400	Out	Out	Out	
		Buchanan LT	Southern Mixed Chaparral (SMC)	0.0030	Out	Out	Out	
		Buchanan/Caminito Fuente	Diegan Coastal Sage Scrub (DCSS)	0.0200	Out	Out	Out	09/15/2004
		Dakota Canyon Replacement/Relocation/Access	Diegan Coastal Sage Scrub (DCSS)	0.5700	Out	Out	Out	01/22/2008
		Euclid & Menlo (47th & Thorn Sewer Maint & Emerg)	Diegan Coastal Sage Scrub (DCSS)	0.0100	Out	Out	Out	02/01/2004
		Euclid & Menlo (47th & Thorn Sewer Maint & Emerg)	Non-Native Grassland (NNG)	0.0500	Out	Out	Out	02/01/2004
		Home Ave TS LT (Ash St Canyon)	Diegan Coastal Sage Scrub (DCSS)	0.0870	Out	Out	Out	09/19/2016
		Hwy 163 North LT	Non-Native Grassland (NNG)	0.1900	Out	Out	Out	
		I-805 & 94 Canyon (40th & C Emergency Repair)	Non-Native Grassland (NNG)	0.0110	Out	Out	Out	02/06/2003
		I-805 & 94 Canyon (40th & C Emergency Repair)	Southern Mixed Chaparral (SMC)	0.0140	Out	Out	Out	02/06/2003
		I-805 & 94 Canyon (40th & C Emergency Repair)	Southern Mixed Chaparral (SMC)	0.0020	Out	Out	Out	02/06/2003
		Lexington (Central & Redwood Emergency)	Southern Mixed Chaparral (SMC)	0.0020	Out	Out	Out	
		Lexington (Central & Redwood Emergency)	Non-Native Grassland (NNG)	0.1400	Out	Out	Out	01/01/1999
		Lexington/Manzanita Pipe and MH Replacement Emer	Southern Mixed Chaparral (SMC)	0.0250	Out	Out	Out	



Mitigation Type	Mitigation Habitat	Project	Impact Habitat	Mitigation Acres	In/Adjacent/Out Watershed	In/Out Canyon	In/Out Project	Impact Date
<b>Marron Valley Cornerstone Lands Conservation Bank 6.8030</b>								
Upland Bank	Diegan Coastal Sage Scrub (DCSS)	Lexington/Manzanita Pipe and MH Replacement Emer	Southern Mixed Chaparral (SMC)	0.0250	Out	Out	Out	
		Lexington/Manzanita Pipe and MH Replacement Emer	Southern Mixed Chaparral (SMC)	0.0090	Out	Out	Out	
		Mission Center LT	Southern Mixed Chaparral (SMC)	0.0400	Out	Out	Out	
		Mission Center LT	Diegan Coastal Sage Scrub (DCSS)	0.1400	Out	Out	Out	
		Norfolk (Fairmont & Montezuma)	Diegan Coastal Sage Scrub (DCSS)	0.3980	Out	Out	Out	04/22/2002
		Norfolk (Fairmont & Montezuma)	Southern Mixed Chaparral (SMC)	0.1060	Out	Out	Out	04/22/2002
		Norfolk (Fairmont & Montezuma)	Broom Baccharis Scrub (BBS)	0.0600	Out	Out	Out	04/22/2002
		Norfolk (Fairmont & Montezuma)	Poison Oak Scrub (POS)	0.1510	Out	Out	Out	04/22/2002
		Norfolk Canyon Maintenance Project	Southern Mixed Chaparral (SMC)	0.0020	Out	Out	Out	
		Norfolk Canyon Maintenance Project	Diegan Coastal Sage Scrub (DCSS)	0.3020	Out	Out	Out	
		Norfolk LT	Southern Mixed Chaparral (SMC)	0.0200	Out	Out	Out	
		Otay Valley TS Pipe Protection	Non-Native Grassland (NNG)	0.0200	Ajacent	Out	Out	
		Pump Station 77 A/B Force Main Inspections	Non-Native Grassland (NNG)	0.0200	Out	Out	Out	
		Pump Station 77 A/B Force Main Inspections	Diegan Coastal Sage Scrub (DCSS)	0.3480	Out	Out	Out	
		Rancho Bernardo 15 East	Diegan Coastal Sage Scrub (DCSS)	0.3100	Out	Out	Out	03/17/2004
		Rancho Bernardo 15 East (Escala Emergency)	Diegan Coastal Sage Scrub (DCSS)	0.1000	Out	Out	Out	
		Rancho Mission LT	Diegan Coastal Sage Scrub (DCSS)	0.0060	Out	Out	Out	11/19/2013
		Shepherd	Diegan Coastal Sage Scrub (DCSS)	0.0100	Out	Out	Out	02/01/2003
		Shepherd LT	Non-Native Grassland (NNG)	0.0900	Out	Out	Out	
		South Chollas LTA	Diegan Coastal Sage Scrub (DCSS)	0.0470	Out	Out	Out	11/11/2015
		South Chollas LTA	Diegan Coastal Sage Scrub (DCSS)	0.3040	Out	Out	Out	11/11/2015
		South Chollas LTA	Diegan Coastal Sage Scrub (DCSS)	0.0120	Out	Out	Out	11/11/2015
		Stevenson	Poison Oak Scrub (POS)	0.0400	Out	Out	Out	10/01/2001
		Stevenson	Diegan Coastal Sage Scrub (DCSS)	0.1200	Out	Out	Out	10/01/2001
		Stevenson	Diegan Coastal Sage Scrub (DCSS)	0.0200	Out	Out	Out	10/01/2001
		Stevenson Canyon Manhole 138 Emergency	Diegan Coastal Sage Scrub (DCSS)	0.1800	Out	Out	Out	

Mitigation Type	Mitigation Habitat	Project	Impact Habitat	Mitigation Acres	In/Adjacent/Out Watershed	In/Out Canyon	In/Out Project	Impact Date
Marron Valley Cornerstone Lands Conservation Bank 6.8030								
Upland Bank	Diegan Coastal Sage Scrub (DCSS)	Stevenson Long Term Access Project	Diegan Coastal Sage Scrub (DCSS)	0.0060	Out	Out	Out	
		Stevenson Long Term Access Project	Diegan Coastal Sage Scrub (DCSS)	0.2100	Out	Out	Out	
		Stevenson Long Term Access Project	Diegan Coastal Sage Scrub (DCSS)	0.0640	Out	Out	Out	
		Trinidad & Euclid	Non-Native Grassland (NNG)	0.1300	Out	Out	Out	05/09/2001
		USIU	Southern Mixed Chaparral (SMC)	0.1000	Out	Out	Out	
		USIU	Southern Mixed Chaparral (SMC)	0.0500	Out	Out	Out	
		USIU	Southern Mixed Chaparral (SMC)	0.0050	Out	Out	Out	
		USIU	Diegan Coastal Sage Scrub (DCSS)	0.0500	Out	Out	Out	
		USIU	Broom Baccharis Scrub (BBS)	0.0200	Out	Out	Out	
		USIU	Broom Baccharis Scrub (BBS)	0.0600	Out	Out	Out	
		USIU	Diegan Coastal Sage Scrub (DCSS)	0.0700	Out	Out	Out	
		USIU	Non-Native Grassland (NNG)	0.1500	Out	Out	Out	
		USIU	Non-Native Grassland (NNG)	0.6000	Out	Out	Out	
Otay Mesa Mitigation Bank 1.7280								
				Upland	1.7280			
Upland Bank	Maritime Succulent Scrub (MSS)	15 West and Elanus	Diegan Coastal Sage Scrub (DCSS)	0.2000	Out	Out	Out	12/19/2003
		Acuna	Diegan Coastal Sage Scrub (DCSS)	0.0100	Out	Out	Out	07/05/2002
		Acuna	Southern Mixed Chaparral (SMC)	0.0700	Out	Out	Out	07/05/2002
		Bounty & Waring (Bounty & Spear Emergency Repair)	Diegan Coastal Sage Scrub (DCSS)	0.2000	Out	Out	Out	04/29/2003
		Elanus & Murray Canyons (I-15 & Clairemont Mesa BI	Diegan Coastal Sage Scrub (DCSS)	0.0120	Out	Out	Out	12/11/2002
		Elanus & Murray Canyons (I-15 & Clairemont Mesa BI	Diegan Coastal Sage Scrub (DCSS)	0.1100	Out	Out	Out	12/11/2002
		Euclid & Menlo (47th & Thorn Sewer Maint & Emerg)	Southern Maritime Chaparral (SMRC)	0.0500	Out	Out	Out	02/01/2004
		Euclid & Menlo Canyon (47th & Thorn Emergency Repa	Southern Mixed Chaparral (SMC)	0.0100	Out	Out	Out	04/29/2002
		Euclid & Menlo Canyon (47th & Thorn Emergency Repa	Non-Native Grassland (NNG)	0.0100	Out	Out	Out	04/29/2002
		Fairmont & Home	Southern Maritime Chaparral (SMRC)	0.1100	Out	Out	Out	04/09/2004
		Fairmont & Home	Non-Native Grassland (NNG)	0.2500	Out	Out	Out	04/09/2004



Mitigation Type	Mitigation Habitat	Project	Impact Habitat	Mitigation Acres	In/Adjacent/Out Watershed	In/Out Canyon	In/Out Project	Impact Date
Otay Mesa Mitigation Bank 1.7280								
Upland Bank	Maritime Succulent Scrub (MSS)	Hopkins	Non-Native Grassland (NNG)	0.1400	In	Out	Out	03/17/2004
		Hopkins (Calle Abajo Emergency)	Non-Native Grassland (NNG)	0.0900	In	Out	Out	04/03/2002
		Hwy 163 North LT	Coast Live Oak Woodland (CLOW)	0.0400	Out	Out	Out	
		Isla Vista Emergency Response Project	Diegan Coastal Sage Scrub (DCSS)	0.0600	Out	Out	Out	05/17/2004
		Norfolk (Fairmont & Montezuma)	Scrub Oak Chaparral (SOC)	0.0460	Out	Out	Out	04/22/2002
		Rancho Bernardo 15 East	Diegan Coastal Sage Scrub (DCSS)	0.3100	Out	Out	Out	03/17/2004
		South Juniper Emergency Project	Diegan Coastal Sage Scrub (DCSS)	0.0010	Out	Out	Out	05/14/2006
		Switzer MH 152 Access	Scrub Oak Chaparral (SOC)	0.0090	Out	Out	Out	01/29/2014
Penasquitos Eucalyptus Removal 0.3100								
				Wetland	0.3100			
Wetland Creation/Restoration	Riparian Forest (RF)	Carroll and Mesa Rim	Riparian Woodland (RW)	0.3100	In	Out	Out	06/02/2003
Rancho Mission Enhancement 2.1322								
				Wetland	2.1322			
Wetland Enhancement	Southern Willow Scrub (SWS)	15 West and Elanus	Southern Willow Scrub (SWS)	0.0500	In	Out	Out	12/19/2003
		Alvarado Court Sewer Crossing	Southern Willow Scrub (SWS)	0.0050	In	Out	Out	
		Alvarado LT	Mule Fat Scrub (MFS)	0.0020	In	Out	Out	
		Alvarado LT	Southern Willow Scrub (SWS)	0.0010	In	Out	Out	
		Alvarado LT	Southern Willow Scrub (SWS)	0.0250	In	Out	Out	
		Alvarado LT	Freshwater Marsh (FM)	0.0060	In	Out	Out	
		Alvarado Trunk Sewer	Disturbed Wetland (DWET)	0.0220	In	Out	Out	
		Barr Avenue (Hotel Circle) part of Dove Canyon	Non-Vegetated Channel (NVC)	0.0100	In	Out	Out	08/16/2003
		Bay View Emergency Response Project	Non-Vegetated Channel (NVC)	0.0130	Ajacent	Out	Out	08/20/2004
		Buchanan	Disturbed Wetland (DWET)	0.3220	In	Out	Out	04/30/2002
		Buchanan	Southern Willow Scrub (SWS)	0.0108	In	Out	Out	04/30/2002
		Buchanan B	Non-Vegetated Channel (NVC)	0.0200	In	Out	Out	
		Buchanan LT	Non-Vegetated Channel (NVC)	0.6240	In	Out	Out	
		Buchanan LT	Disturbed Wetland (DWET)	0.0600	In	Out	Out	

Mitigation Type	Mitigation Habitat	Project	Impact Habitat	Mitigation Acres	In/Adjacent/Out Watershed	In/Out Canyon	In/Out Project	Impact Date
Rancho Mission Enhancement 2.1322								
Wetland Enhancement	Southern Willow Scrub (SWS)	Buchanan Sewer Blockage Emergency	Southern Willow Scrub (SWS)	0.0080	In	Out	Out	
		Buchanan Sewer Blockage Emergency	Southern Willow Scrub (SWS)	0.0030	In	Out	Out	
		Chollas Dam Vegetation Removal	Freshwater Marsh (FM)	0.0220	Ajacent	Out	Out	
		Chollas Exposed Water Main Repair	Riparian Scrub (RS)	0.0140	Ajacent	Out	Out	
		Delevan & I-15 Emerg Repair (South Juniper Canyon)	Non-Vegetated Channel (NVC)	0.0300	Ajacent	Out	Out	
		Elanus & Murray Canyons (I-15 & Clairemont Mesa Bl	Southern Willow Scrub (SWS)	0.0070	In	Out	Out	12/11/2002
		Elanus (I-15 & Clairemont Mesa Blvd) LT	Emergent Wetland (EW)	0.0050	In	Out	Out	
		Euclid & Menlo (47th & Thorn Sewer Maint & Emerg)	Disturbed Wetland (DWET)	0.0800	Ajacent	Out	Out	02/01/2004
		Euclid & Menlo (47th & Thorn Sewer Maint & Emerg)	Non-Vegetated Channel (NVC)	0.0100	Ajacent	Out	Out	02/01/2004
		Euclid & Menlo Canyon (47th & Thorn Emergency Repa	Non-Vegetated Channel (NVC)	0.0011	Ajacent	Out	Out	04/29/2002
		Euclid and Menlo Emerg Pipe Protection	Non-Vegetated Channel (NVC)	0.0050	Ajacent	Out	Out	
		Federal & Chollas	Disturbed Wetland (DWET)	0.0008	Ajacent	Out	Out	
		Fox Canyon (University & 49th) Emergency Repair	Non-Vegetated Channel (NVC)	0.0020	Ajacent	Out	Out	
		Hopkins	Disturbed Wetland (DWET)	0.0200	Out	Out	Out	03/17/2004
		Hopkins (Calle Abajo Emergency)	Non-Vegetated Channel (NVC)	0.0020	Out	Out	Out	04/03/2002
		Huckleberry (32nd St Canyon Emergency Maintenance)	Disturbed Wetland (DWET)	0.0400	Ajacent	Out	Out	07/22/2003
		Hwy 163 Corridor (7th & Brookes 2002Emergency Repa	Non-Vegetated Channel (NVC)	0.0200	Ajacent	Out	Out	11/26/2003
		Hwy 163 North LT	Non-Vegetated Channel (NVC)	0.0010	Ajacent	Out	Out	
		I-15 & Adams	Emergent Wetland (EW)	0.0040	In	Out	Out	05/06/2004
		I-15 & Adams	Non-Vegetated Channel (NVC)	0.0500	In	Out	Out	05/06/2004
		I-15 & Adams	Non-Vegetated Channel (NVC)	0.0200	In	Out	Out	05/06/2004
		I-805 & 94 Canyon (40th & C Emergency Repair)	Non-Vegetated Channel (NVC)	0.0013	Ajacent	Out	Out	02/06/2003
		Isla Vista Emergency Response Project	Non-Vegetated Channel (NVC)	0.0030	Ajacent	Out	Out	
		Lexington/Manzanita Pipe and MH Replacement Emer	Non-Vegetated Channel (NVC)	0.0160	Ajacent	Out	Out	



Mitigation Type	Mitigation Habitat	Project	Impact Habitat	Mitigation Acres	In/Adjacent/Out Watershed	In/Out Canyon	In/Out Project	Impact Date
Rancho Mission Enhancement 2.1322								
Wetland Enhancement	Southern Willow Scrub (SWS)	Lexington/Manzanita Pipe Encasement Emergency	Non-Vegetated Channel (NVC)	0.0001	Ajacent	Out	Out	
		Lexington/Manzanita Pipe Encasement Emergency	Non-Vegetated Channel (NVC)	0.0050	Ajacent	Out	Out	
		Market & Euclid (MH 88 Repair at Encanto Creek)	Southern Willow Scrub (SWS)	0.0030	Ajacent	Out	Out	
		Mission Center Canyon B	Riparian Scrub (RS)	0.0250	In	Out	Out	
		Mission Center Canyon B	Emergent Wetland (EW)	0.0200	In	Out	Out	
		Mission Center Canyon B	Disturbed Wetland (DWET)	0.0140	In	Out	Out	
		Mission Center Canyon Emergency Sewer Repair	Southern Willow Scrub (SWS)	0.0030	In	Out	Out	
		Mission Center Canyon Emergency Sewer Repair	Southern Willow Scrub (SWS)	0.0010	In	Out	Out	
		Mission Center Canyon Emergency Sewer Repair	Non-Vegetated Channel (NVC)	0.0020	In	Out	Out	
		Mission Center Canyon Emergency Sewer Repair	Non-Vegetated Channel (NVC)	0.0120	In	Out	Out	
		Mission Center Canyon Emergency Sewer Repair	Disturbed Wetland (DWET)	0.0010	In	Out	Out	
		Mission Center Canyon Emergency Sewer Repair	Disturbed Wetland (DWET)	0.0050	In	Out	Out	
		Mission Center Canyon Emergency Sewer Repair	Freshwater Marsh (FM)	0.0160	In	Out	Out	
		Mission Center Canyon Emergency Sewer Repair	Freshwater Marsh (FM)	0.0070	In	Out	Out	
		Murphy Canyon MH114 Locate and Raise	Southern Willow Scrub (SWS)	0.0140	In	Out	Out	08/24/2015
		Murphy Canyon TS Access and Repair	Freshwater Marsh (FM)	0.0340	In	Out	Out	06/20/2014
		Norfolk (Fairmont & Montezuma)	Non-Vegetated Channel (NVC)	0.0420	In	Out	Out	04/22/2002
		Norfolk (Fairmont & Montezuma)	Southern Willow Scrub (SWS)	0.0030	In	Out	Out	04/22/2002
		Norfolk Canyon Maintenance Project	Non-Vegetated Channel (NVC)	0.0020	In	Out	Out	
		Presidio (Palm Cyn) GJ665	Riparian Scrub (RS)	0.1650	In	Out	Out	
		Presidio (Palm Cyn) GJ665	Non-Vegetated Channel (NVC)	0.0017	In	Out	Out	
		Presidio (Palm Cyn) GJ665	Non-Vegetated Channel (NVC)	0.0120	In	Out	Out	
		Rancho Mission (Mission Gorge Canyon, Conestoga Co)	Non-Vegetated Channel (NVC)	0.0080	In	Out	Out	02/07/2002
		Rancho Mission (Mission Gorge Canyon, Conestoga Co)	Disturbed Wetland (DWET)	0.0050	In	Out	Out	02/07/2002

Mitigation Type	Mitigation Habitat	Project	Impact Habitat	Mitigation Acres	In/Adjacent/Out Watershed	In/Out Canyon	In/Out Project	Impact Date
Rancho Mission Enhancement 2.1322								
Wetland Enhancement	Southern Willow Scrub (SWS)	Rancho Mission LT	Southern Willow Scrub (SWS)	0.0070	In	Out	Out	
		San Diego Mission Rd Emergency	Southern Willow Scrub (SWS)	0.0100	In	Out	Out	
		San Diego Mission Rd Emergency	Freshwater Marsh (FM)	0.0100	In	Out	Out	
		Shepherd	Southern Willow Scrub (SWS)	0.0100	In	Out	Out	02/01/2003
		Shepherd LT	Riparian Woodland (RW)	0.0600	In	Out	Out	
		Shepherd LT	Disturbed Wetland (DWET)	0.0150	In	Out	Out	
		Shepherd LT	Riparian Scrub (RS)	0.0200	In	Out	Out	
		Shepherd LT	Non-Vegetated Channel (NVC)	0.0300	In	Out	Out	
		South Juniper Emergency Project	Non-Vegetated Channel (NVC)	0.0200	Ajacent	Out	Out	
		Valencia Canyon Emergency Repair & Maintenance	Non-Vegetated Channel (NVC)	0.0014	Ajacent	Out	Out	01/25/2003
		Valencia Canyon Emergency Repair & Maintenance	Mule Fat Scrub (MFS)	0.0040	Ajacent	Out	Out	01/25/2003
		Willow St. Canyon	Non-Vegetated Channel (NVC)	0.0040	Ajacent	Out	Out	
		Woodman Canyon Emergency Sewer Access and Repair	Non-Vegetated Channel (NVC)	0.0040	Ajacent	Out	Out	01/06/2005
Rose Canyon Wetland and Upland 6.2878								
				Upland 2.5450				
Upland Restoration	Coastal Sage Scrub (CSS)	I-5/SR-52 Maintenance Project	Non-Native Grassland (NNG)	0.0100	In	In	Out	
		I-5/SR-52 Maintenance Project	Diegan Coastal Sage Scrub (DCSS)	0.0200	In	In	Out	
		Middle Rose Creek (ER Repair - Rose W of Genesee )	Diegan Coastal Sage Scrub (DCSS)	0.0600	In	In	Out	12/01/2002
		Middle Rose Creek (ER Repair - Rose W of Genesee )	Non-Native Grassland (NNG)	0.0400	In	In	Out	12/01/2002
		Miramar Trunk Sewer Replacement Project	Southern Mixed Chaparral (SMC)	0.0010	In	Out	Out	07/06/2007
		Miramar Trunk Sewer Replacement Project	Diegan Coastal Sage Scrub (DCSS)	0.0060	In	Out	Out	07/06/2007
		Miramar Trunk Sewer Replacement Project	Diegan Coastal Sage Scrub (DCSS)	0.1480	In	Out	Out	07/06/2007
		Miramar Trunk Sewer Replacement Project	Poison Oak Scrub (POS)	0.0760	In	Out	Out	07/06/2007
		Miramar Trunk Sewer Replacement Project	Poison Oak Scrub (POS)	0.0065	In	Out	Out	07/06/2007
		Miramar Trunk Sewer Replacement Project	Non-Native Grassland (NNG)	0.0120	In	Out	Out	07/06/2007



Mitigation Type	Mitigation Habitat	Project	Impact Habitat	Mitigation Acres	In/Adjacent/Out Watershed	In/Out Canyon	In/Out Project	Impact Date
Rose Canyon Wetland and Upland 6.2878								
Upland Restoration	Coastal Sage Scrub (CSS)	Miramar Trunk Sewer Replacement Project	Non-Native Grassland (NNG)	0.0825	In	Out	Out	07/06/2007
		Miramar Trunk Sewer Replacement Project	Broom Baccharis Scrub (BBS)	0.3390	In	Out	Out	07/06/2007
		Miramar Trunk Sewer Replacement Project	Broom Baccharis Scrub (BBS)	0.5920	In	Out	Out	07/06/2007
		Old Rose Canyon Sewer Relocation Project	Non-Native Grassland (NNG)	0.0450	In	Out	Out	02/08/2011
		Penasquitos Bluffs (Finger Canyon Emergency)	Scrub Oak Chaparral (SOC)	0.1400	In	Out	Out	11/01/2000
		Penasquitos Bluffs (Finger Canyon Emergency)	Scrub Oak Chaparral (SOC)	0.1600	In	Out	Out	11/01/2000
		Penasquitos View Emergency	Diegan Coastal Sage Scrub (DCSS)	0.0100	In	Out	Out	08/18/2004
		Rose Canyon ER Repairs between 9/01 and 5/03	Diegan Coastal Sage Scrub (DCSS)	0.1300	In	In	Out	09/01/2001
		Rose Canyon ER Repairs between 9/01 and 5/03	Non-Native Grassland (NNG)	0.2000	In	In	Out	09/01/2001
		Rose Canyon ER Repairs between 9/01 and 5/03	Broom Baccharis Scrub (BBS)	0.0300	In	In	Out	09/01/2001
		Rose Canyon ER Repairs between 9/01 and 5/03	Poison Oak Scrub (POS)	0.0500	In	In	Out	09/01/2001
		Rose Canyon TS Joint Repair CIP	Diegan Coastal Sage Scrub (DCSS)	0.3000	In	In	Out	Future
		Native Grassland (NG)	Miramar Trunk Sewer Replacement Project	Coast Live Oak Woodland (CLOW)	0.0070	In	Out	Out
	Miramar Trunk Sewer Replacement Project		Coast Live Oak Woodland (CLOW)	0.0120	In	Out	Out	07/06/2007
	Miramar Trunk Sewer Replacement Project		Native Grassland (NG)	0.0380	In	Out	Out	07/06/2007
	Miramar Trunk Sewer Replacement Project		Scrub Oak Chaparral (SOC)	0.0100	In	Out	Out	07/06/2007
	Penasquitos Bluffs (Finger Canyon Emergency)		Valley Needlegrass Grassland (VNG)	0.0200	In	Out	Out	11/01/2000
Wetland				3.7428				
Wetland Creation/Restoration	Riparian Forest (RF)	Dakota Canyon Manhole Repairs - Emergency	Waters of the U.S.	0.0001	In	Out	Out	12/16/2015
		Dakota Canyon Manhole Repairs - Emergency	Waters of the U.S.	0.0005	In	Out	Out	12/16/2015
		I-5/SR-52 Maintenance Project	Southern Willow Scrub (SWS)	0.0300	In	In	Out	
		Lower Rose Canyon Emergency Repairs (MH 15)	Coastal and Valley Freshwater Marsh (CVFM)	0.2100	In	Out	Out	05/04/2005
		Lower Rose Canyon Emergency Repairs (MH 15)	Emergent Wetland (EW)	0.0050	In	Out	Out	05/04/2005

Mitigation Type	Mitigation Habitat	Project	Impact Habitat	Mitigation Acres	In/Adjacent/Out Watershed	In/Out Canyon	In/Out Project	Impact Date
Rose Canyon Wetland and Upland 6.2878								
Wetland Creation/Restoration	Riparian Forest (RF)	Lower Rose Canyon Emergency Repairs (MH 15)	Mule Fat Scrub (MFS)	0.1100	In	Out	Out	05/04/2005
		Lower Rose Canyon Emergency Repairs (MH 15)	Southern Willow Scrub (SWS)	0.3200	In	Out	Out	05/04/2005
		Middle Rose Cyn MH 160 Emergency	Non-Vegetated Channel (NVC)	0.0200	In	In	Out	12/01/2011
		Middle Rose Cyn MH 160 Emergency	Southern Willow Scrub (SWS)	0.0200	In	In	Out	12/01/2011
		Miramar Trunk Sewer Replacement Project	Southern Willow Scrub (SWS)	0.0480	In	Out	Out	07/06/2007
		Miramar Trunk Sewer Replacement Project	Mule Fat Scrub (MFS)	0.2620	In	Out	Out	07/06/2007
		Miramar Trunk Sewer Replacement Project	Mule Fat Scrub (MFS)	0.0440	In	Out	Out	07/06/2007
		Miramar Trunk Sewer Replacement Project	Riparian Woodland (RW)	0.1200	In	Out	Out	07/06/2007
		Miramar Trunk Sewer Replacement Project	Herbaceous Wetland (HW)	0.1580	In	Out	Out	07/06/2007
		Miramar Trunk Sewer Replacement Project	Mule Fat Scrub (MFS)	0.4120	In	Out	Out	07/06/2007
		Miramar Trunk Sewer Replacement Project	Mule Fat Scrub (MFS)	0.2260	In	Out	Out	07/06/2007
		Miramar Trunk Sewer Replacement Project	Southern Willow Scrub (SWS)	0.0320	In	Out	Out	07/06/2007
		Miramar Trunk Sewer Replacement Project	Southern Willow Scrub (SWS)	0.0090	In	Out	Out	07/06/2007
		Miramar Trunk Sewer Replacement Project	Riparian Woodland (RW)	0.1530	In	Out	Out	07/06/2007
		Miramar Trunk Sewer Replacement Project	Riparian Woodland (RW)	0.0270	In	Out	Out	07/06/2007
		Miramar Trunk Sewer Replacement Project	Southern Willow Scrub (SWS)	0.0540	In	Out	Out	07/06/2007
		Miramar Trunk Sewer Replacement Project	Southern Willow Scrub (SWS)	0.0540	In	Out	Out	07/06/2007
		Miramar Trunk Sewer Replacement Project	Southern Willow Scrub (SWS)	0.0490	In	Out	Out	07/06/2007
		Miramar Trunk Sewer Replacement Project	Southern Willow Scrub (SWS)	0.0490	In	Out	Out	07/06/2007
		Miramar Trunk Sewer Replacement Project	Southern Willow Scrub (SWS)	0.0240	In	Out	Out	07/06/2007
		Miramar Trunk Sewer Replacement Project	Southern Coast Live Oak Riparian Forest (SCLORF)	0.1050	In	Out	Out	07/06/2007
		Miramar Trunk Sewer Replacement Project	Southern Coast Live Oak Riparian Forest (SCLORF)	0.0660	In	Out	Out	07/06/2007



Mitigation Type	Mitigation Habitat	Project	Impact Habitat	Mitigation Acres	In/Adjacent/Out Watershed	In/Out Canyon	In/Out Project	Impact Date
Rose Canyon Wetland and Upland 6.2878								
Wetland Creation/Restoration	Riparian Forest (RF)	Miramar Trunk Sewer Replacement Project	Mule Fat Scrub (MFS)	0.0550	In	Out	Out	07/06/2007
		Miramar Trunk Sewer Replacement Project	Mule Fat Scrub (MFS)	0.0050	In	Out	Out	07/06/2007
		Miramar Trunk Sewer Replacement Project	Mule Fat Scrub (MFS)	0.0030	In	Out	Out	07/06/2007
		Miramar Trunk Sewer Replacement Project	Riparian Woodland (RW)	0.0060	In	Out	Out	07/06/2007
		Miramar Trunk Sewer Replacement Project	Riparian Woodland (RW)	0.0440	In	Out	Out	07/06/2007
		Miramar Trunk Sewer Replacement Project	Riparian Woodland (RW)	0.1700	In	Out	Out	07/06/2007
		Monte Verde Sewer Improvements	Southern Riparian Forest (SRF)	0.0200	In	In	Out	
		Monte Verde Sewer Improvements	Southern Riparian Forest (SRF)	0.0200	In	In	Out	
		Nobel Drive MH97 Emergency	Mule Fat Scrub (MFS)	0.0047	In	Out	Out	02/02/2015
		Old Rose Canyon Sewer Relocation Project	Southern Willow Scrub (SWS)	0.0400	In	Out	Out	02/08/2011
		Old Rose Canyon Sewer Relocation Project	Mule Fat Scrub (MFS)	0.0070	In	Out	Out	02/08/2011
		Old Rose Canyon Sewer Relocation Project	Freshwater Marsh (FM)	0.0020	In	Out	Out	02/08/2011
		Rose Canyon ER Repairs between 9/01 and 5/03	Mule Fat Scrub (MFS)	0.0300	In	In	Out	09/01/2001
		Rose Canyon ER Repairs between 9/01 and 5/03	Riparian Woodland (RW)	0.0200	In	In	Out	09/01/2001
		Rose Canyon ER Repairs between 9/01 and 5/03	Southern Willow Scrub (SWS)	0.0300	In	In	Out	09/01/2001
		Rose Canyon ER Repairs between 9/01 and 5/03	Non-Vegetated Channel (NVC)	0.0018	In	In	Out	09/01/2001
		Rose Creek East of I-805 (Miramar Rd & Commerce Av) Emergency	Non-Vegetated Channel (NVC)	0.1200	In	Out	Out	02/20/2002
		Rose Creek Emergency Bypass Project	Non-Vegetated Channel (NVC)	0.0050	In	In	Out	
Wetland Enhancement	Riparian Forest (RF)	Lower Rose Canyon Emergency Repairs (MH 15)	Mule Fat Scrub (MFS)	0.1100	In	Out	Out	05/04/2005
		Lower Rose Canyon Emergency Repairs (MH 15)	Emergent Wetland (EW)	0.0050	In	Out	Out	05/04/2005
		Lower Rose Canyon Emergency Repairs (MH 15)	Coastal and Valley Freshwater Marsh (CVFM)	0.2100	In	Out	Out	05/04/2005
		Miramar Trunk Sewer Replacement Project	Southern Willow Scrub (SWS)	0.0090	In	Out	Out	07/06/2007
		Miramar Trunk Sewer Replacement Project	Southern Willow Scrub (SWS)	0.0320	In	Out	Out	07/06/2007

Mitigation Type	Mitigation Habitat	Project	Impact Habitat	Mitigation Acres	In/Adjacent/Out Watershed	In/Out Canyon	In/Out Project	Impact Date
Rose Canyon Wetland and Upland 6.2878								
Wetland Enhancement	Riparian Forest (RF)	Miramar Trunk Sewer Replacement Project	Mule Fat Scrub (MFS)	0.0050	In	Out	Out	07/06/2007
		Miramar Trunk Sewer Replacement Project	Mule Fat Scrub (MFS)	0.0030	In	Out	Out	07/06/2007
		Miramar Trunk Sewer Replacement Project	Riparian Woodland (RW)	0.0880	In	Out	Out	07/06/2007
		Miramar Trunk Sewer Replacement Project	Riparian Woodland (RW)	0.0850	In	Out	Out	07/06/2007
		Nobel Drive MH97 Emergency	Mule Fat Scrub (MFS)	0.0047	In	Out	Out	02/02/2015
San Clemente Wetland and Upland 3.7445								
Upland				1.7445				
Upland Restoration	Coast Live Oak Woodland (CLOW)	San Clemente Canyon Access Path LT Project	Coast Live Oak Woodland (CLOW)	0.1500	In	In	Out	
		San Clemente Canyon Access Path LT Project	Coast Live Oak Woodland (CLOW)	0.0390	In	In	Out	
	Coastal Sage Scrub (CSS)	Gesner LT	Diegan Coastal Sage Scrub (DCSS)	0.1000	In	Out	Out	
		Gesner/Huron	Non-Native Grassland (NNG)	0.0100	In	Out	Out	08/01/1998
		Penasquitos Bluffs (Finger Canyon Emergency)	Non-Native Grassland (NNG)	0.0300	In	Out	Out	11/01/2000
		Penasquitos Bluffs (Finger Canyon Emergency)	Chamise Chaparral (CC)	0.0200	In	Out	Out	11/01/2000
		Penasquitos Bluffs (Finger Canyon Emergency)	Diegan Coastal Sage Scrub (DCSS)	0.4200	In	Out	Out	11/01/2000
		Penasquitos Bluffs (Finger Canyon Emergency)	Diegan Coastal Sage Scrub (DCSS)	0.2700	In	Out	Out	11/01/2000
		Penasquitos Bluffs (Finger Canyon Emergency)	Diegan Coastal Sage Scrub (DCSS)	0.0200	In	Out	Out	11/01/2000
		San Clemente (Emergency Repairs Combined)	Diegan Coastal Sage Scrub (DCSS)	0.0510	In	In	Out	09/17/2001
		San Clemente (Emergency Repairs Combined)	Non-Native Grassland (NNG)	0.0050	In	In	Out	09/17/2001
		San Clemente Canyon Access Path LT Project	Diegan Coastal Sage Scrub (DCSS)	0.0190	In	In	Out	
		San Clemente Canyon Access Path LT Project	Diegan Coastal Sage Scrub (DCSS)	0.0260	In	In	Out	
		San Clemente Canyon Biltmore Pipe Protection Emerg	Southern Mixed Chaparral (SMC)	0.0100	In	In	Out	11/30/2006
		San Clemente Canyon Biltmore Pipe Protection Emerg	Non-Native Grassland (NNG)	0.0510	In	In	Out	11/30/2006
		San Clemente Canyon Biltmore Pipe Protection Emerg	Diegan Coastal Sage Scrub (DCSS)	0.0100	In	In	Out	11/30/2006
		San Clemente LT MH #4	Poison Oak Scrub (POS)	0.0180	In	In	Out	07/24/2010

Mitigation Type	Mitigation Habitat	Project	Impact Habitat	Mitigation Acres	In/Adjacent/Out Watershed	In/Out Canyon	In/Out Project	Impact Date
San Clemente Wetland and Upland 3.7445								
Upland Restoration	Coastal Sage Scrub (CSS)	San Clemente LT MH #4	Non-Native Grassland (NNG)	0.0580	In	In	Out	07/24/2010
		Wet Weather Stream Discharge	Diegan Coastal Sage Scrub (DCSS)	0.1950	In	Out	Out	
		Wet Weather Stream Discharge	Diegan Coastal Sage Scrub (DCSS)	0.1850	In	Out	Out	
		Wet Weather Stream Discharge	Southern Mixed Chaparral (SMC)	0.0375	In	Out	Out	
		Wet Weather Stream Discharge	Southern Mixed Chaparral (SMC)	0.0200	In	Out	Out	
Wetland				2.0000				
Wetland Creation/Restoration	Riparian Forest (RF)	Balboa Terrace Trunk Sewer Replacement	Oak Riparian Forest (ORF)	0.0030	In	Out	Out	09/16/2012
		Balboa Terrace Trunk Sewer Replacement	Southern Willow Scrub (SWS)	0.0640	In	Out	Out	09/16/2012
		Balboa Terrace Trunk Sewer Replacement	Disturbed Wetland (DWET)	0.1070	In	Out	Out	09/16/2012
		Balboa Terrace Trunk Sewer Replacement	Mule Fat Scrub (MFS)	0.0220	In	Out	Out	09/16/2012
		Balboa Terrace Trunk Sewer Replacement	Freshwater Marsh (FM)	0.0160	In	Out	Out	09/16/2012
		Balboa Terrace Trunk Sewer Replacement	Non-Vegetated Channel (NVC)	0.0140	In	Out	Out	09/16/2012
		Balboa Terrace Trunk Sewer Replacement	Freshwater Marsh (FM)	0.0240	In	Out	Out	
		Balboa Terrace Trunk Sewer Replacement	Disturbed Wetland (DWET)	0.0680	In	Out	Out	
		Carroll Canyon Emergency Sewer Repair	Non-Vegetated Channel (NVC)	0.0100	In	Out	Out	02/26/2010
		Carroll Canyon Emergency Sewer Repair	Southern Arroyo Willow Riparian Forest (SAWRF)	0.0300	In	Out	Out	02/26/2010
		Dakota Canyon Replacement/Relocation/Access	Non-Vegetated Channel (NVC)	0.0300	In	Out	Out	01/22/2008
		East Tecolote Canyon Pipe Encasemt Protection Proj	Open Water (OW)	0.0230	In	Out	Out	10/04/2010
		East Tecolote Canyon Pipe Encasemt Protection Proj	Southern Willow Scrub (SWS)	0.0360	In	Out	Out	10/04/2010
		East Tecolote Canyon Pipe Encasemt Protection Proj	Southern Riparian Forest (SRF)	0.0300	In	Out	Out	10/04/2010
		Penasquitos Bluffs LT	Freshwater Marsh (FM)	0.0140	In	Out	Out	
		Penasquitos Bluffs LT	Alkali Marsh (AM)	0.0100	In	Out	Out	
		Penasquitos Bluffs LT	Alkali Marsh (AM)	0.0040	In	Out	Out	
		Penasquitos Bluffs LT	Southern Willow Scrub (SWS)	0.0030	In	Out	Out	
		Penasquitos Bluffs LT	Southern Willow Scrub (SWS)	0.0070	In	Out	Out	



Mitigation Type	Mitigation Habitat	Project	Impact Habitat	Mitigation Acres	In/Adjacent/Out Watershed	In/Out Canyon	In/Out Project	Impact Date
San Clemente Wetland and Upland 3.7445								
Wetland Creation/Restoration	Riparian Forest (RF)	San Clemente Canyon Access Path LT Project	Southern Coast Live Oak Riparian Forest (SCLORF)	0.3200	In	In	Out	
		San Clemente Canyon Access Path LT Project	Southern Cottonwood-Willow Riparian Forest (SCWRF)	0.1330	In	Out	Out	
		San Clemente Canyon Access Path LT Project	Southern Cottonwood-Willow Riparian Forest (SCWRF)	0.5520	In	In	Out	
		San Clemente Canyon Biltmore Pipe Protection Emerg	Non-Vegetated Channel (NVC)	0.0040	In	Out	Out	11/30/2006
		San Clemente Canyon Biltmore Pipe Protection Emerg	Southern Coast Live Oak Riparian Forest (SCLORF)	0.1170	In	In	Out	11/30/2006
		San Clemente Canyon Mitigation Project	Southern Coast Live Oak Riparian Forest (SCLORF)	0.0030	In	In	In	09/15/2007
		San Clemente Emergency Sewer Encasement Repair	Southern Coast Live Oak Riparian Forest (SCLORF)	0.0200	In	Out	Out	12/13/2010
		San Clemente Emergency Sewer Encasement Repair	Non-Vegetated Channel (NVC)	0.0100	In	Out	Out	12/13/2010
		Soledad Valley Water Line Break	Alkali Marsh (AM)	0.2000	In	Out	Out	03/23/2009
		Stevenson Long Term Access Project	Southern Willow Scrub (SWS)	0.0280	In	Out	Out	
		Stevenson Long Term Access Project	Mule Fat Scrub (MFS)	0.0850	In	Out	Out	
	Streambed (STREAMBED)	Wet Weather Stream Discharge	Non-Vegetated Channel (NVC)	0.0020	In	Out	Out	
		Wet Weather Stream Discharge	Non-Vegetated Channel (NVC)	0.0110	In	Out	Out	
Tecolote - Tree of Heaven removal 0.2500								
				Wetland	0.2500			
Wetland Enhancement	Riparian Forest (RF)	Tecolote	Southern Coast Live Oak Riparian Forest (SCLORF)	0.2500	In	In	Out	02/28/2001
Tecolote Canyon Wetland and Upland 4.5298								
				Upland	3.3138			
Upland Restoration	Coastal Sage Scrub (CSS)	Central Tecolote Sewer Break Emergency	Diegan Coastal Sage Scrub (DCSS)	0.1180	In	In	Out	01/26/2016
		Central Tecolote Sewer Break Emergency	Diegan Coastal Sage Scrub (DCSS)	0.0420	In	In	Out	01/26/2016
		Central Tecolote Sewer Break Emergency	Diegan Coastal Sage Scrub (DCSS)	0.0100	In	In	Out	01/26/2016
		Central Tecolote Sewer Break Emergency	Poison Oak Scrub (POS)	0.0120	In	In	Out	01/26/2016
		Central Tecolote Sewer Break Emergency	Poison Oak Scrub (POS)	0.0160	In	In	Out	01/26/2016
		East Tecolote (East Clairemont)	Diegan Coastal Sage Scrub (DCSS)	0.0120	In	Out	Out	01/08/2002

Mitigation Type	Mitigation Habitat	Project	Impact Habitat	Mitigation Acres	In/Adjacent/Out Watershed	In/Out Canyon	In/Out Project	Impact Date
Tecolote Canyon Wetland and Upland 4.5298								
Upland Restoration	Coastal Sage Scrub (CSS)	East Tecolote (East Clairemont) LT	Poison Oak Scrub (POS)	0.0030	In	Out	Out	
		East Tecolote (East Clairemont) LT	Poison Oak Scrub (POS)	0.0120	In	Out	Out	
		East Tecolote (East Clairemont) LT	Diegan Coastal Sage Scrub (DCSS)	0.0020	In	Out	Out	
		East Tecolote Emergency MH 218	Diegan Coastal Sage Scrub (DCSS)	0.0270	In	Out	Out	
		East Tecolote Manholes 223 and 224 Emergency	Diegan Coastal Sage Scrub (DCSS)	0.0090	In	Out	Out	
		Manning Canyon Sewer Repair	Diegan Coastal Sage Scrub (DCSS)	0.0020	In	Out	Out	
		Manning Street Sewer Repair	Non-Native Grassland (NNG)	0.1000	In	Out	Out	07/06/2001
		Manning Street Sewer Repair	Diegan Coastal Sage Scrub (DCSS)	0.9000	In	Out	Out	07/06/2001
		Manning Street Sewer Repair	Diegan Coastal Sage Scrub (DCSS)	0.1000	In	Out	Out	07/06/2001
		Park Mesa LT	Non-Native Grassland (NNG)	0.0040	In	Out	Out	
		Park Mesa LT	Non-Native Grassland (NNG)	0.0050	In	Out	Out	
		Park Mesa LT	Southern Mixed Chaparral (SMC)	0.0150	In	Out	Out	
		Park Mesa LT	Diegan Coastal Sage Scrub (DCSS)	0.1080	In	Out	Out	
		Park Mesa Way	Broom Baccharis Scrub (BBS)	0.0400	In	Out	Out	01/13/2000
		Stevenson Canyon MH 257 Emergency	Diegan Coastal Sage Scrub (DCSS)	0.0048	In	Out	Out	
		Tecolote	Diegan Coastal Sage Scrub (DCSS)	0.0700	In	In	Out	02/28/2001
		Tecolote	Poison Oak Scrub (POS)	0.0300	In	In	Out	02/28/2001
		Tecolote (including Mt. Elbrus)	Diegan Coastal Sage Scrub (DCSS)	0.2300	In	In	Out	11/18/2002
		Tecolote (including Mt. Elbrus)	Diegan Coastal Sage Scrub (DCSS)	0.0200	In	In	Out	11/18/2002
		Tecolote (including Mt. Elbrus)	Non-Native Grassland (NNG)	0.0500	In	In	Out	11/18/2002
		Tecolote (Mt. Elbrus) LTA	Diegan Coastal Sage Scrub (DCSS)	0.0100	In	In	Out	10/25/2016
		Tecolote 8 inch CI Sewer Main Replacement	Diegan Coastal Sage Scrub (DCSS)	0.0150	In	In	Out	
		Tecolote 8 inch CI Sewer Main Replacement	Diegan Coastal Sage Scrub (DCSS)	0.0030	In	In	Out	
		Tecolote 8 inch CI Sewer Main Replacement	Non-Native Grassland (NNG)	0.1000	In	In	Out	
		Tecolote Canyon Mitigation Project	Poison Oak Scrub (POS)	0.6500	In	In	In	
		Tecolote Emergency Pipe Repair (Crossing)	Diegan Coastal Sage Scrub (DCSS)	0.0040	In	In	Out	
		Tecolote LT	Diegan Coastal Sage Scrub (DCSS)	0.4000	In	In	Out	

Mitigation Type	Mitigation Habitat	Project	Impact Habitat	Mitigation Acres	In/Adjacent/Out Watershed	In/Out Canyon	In/Out Project	Impact Date
Tecolote Canyon Wetland and Upland 4.5298								
Upland Restoration	Coastal Sage Scrub (CSS)	Tecolote Pipe Repair Near Manhole 346	Diegan Coastal Sage Scrub (DCSS)	0.0240	In	In	Out	
		Tecolote Pipe Repair Near Manhole 346	Non-Native Grassland (NNG)	0.1100	In	In	Out	
	Native Grassland (NG)	East Tecolote (East Clairemont) LT	Scrub Oak Chaparral (SOC)	0.0160	In	Out	Out	
		East Tecolote (East Clairemont) LT	Scrub Oak Chaparral (SOC)	0.0220	In	Out	Out	
		East Tecolote Manholes 223 and 224 Emergency	Coast Live Oak Woodland (CLOW)	0.0180	In	Out	Out	
					Wetland	1.2160		
Wetland Creation/Restoration	Riparian Forest (RF)	Central Tecolote Sewer Break Emergency	Southern Riparian Forest (SRF)	0.1110	In	In	Out	01/26/2016
		East Tecolote (East Clairemont)	Southern Willow Scrub (SWS)	0.0001	In	Out	Out	01/08/2002
		East Tecolote (East Clairemont)	Southern Coast Live Oak Riparian Forest (SCLORF)	0.0040	In	Out	Out	01/08/2002
		East Tecolote (East Clairemont) LT	Freshwater Marsh (FM)	0.0080	In	Out	Out	
		East Tecolote (East Clairemont) LT	Freshwater Marsh (FM)	0.0010	In	Out	Out	
		East Tecolote (East Clairemont) LT	Southern Riparian Forest (SRF)	0.0610	In	Out	Out	
		East Tecolote (East Clairemont) LT	Southern Riparian Forest (SRF)	0.0040	In	Out	Out	
		East Tecolote (East Clairemont) LT	Southern Riparian Forest (SRF)	0.0270	In	Out	Out	
		East Tecolote (East Clairemont) LT	Non-Vegetated Channel (NVC)	0.0060	In	Out	Out	
		East Tecolote (East Clairemont) LT	Freshwater Marsh (FM)	0.0020	In	Out	Out	
		East Tecolote (East Clairemont) LT	Non-Vegetated Channel (NVC)	0.0020	In	Out	Out	
		East Tecolote Emergency MH 218	Southern Riparian Forest (SRF)	0.0480	In	Out	Out	
		East Tecolote Emergency MH 218	Non-Vegetated Channel (NVC)	0.0070	In	Out	Out	
		East Tecolote LT (Phase 1)	Southern Riparian Forest (SRF)	0.0060	In	Out	Out	
		East Tecolote Manholes 223 and 224 Emergency	Non-Vegetated Channel (NVC)	0.0150	In	Out	Out	
		East Tecolote Manholes 223 and 224 Emergency	Freshwater Marsh (FM)	0.0390	In	Out	Out	
		East Tecolote Manholes 223 and 224 Emergency	Southern Riparian Forest (SRF)	0.0340	In	Out	Out	
		Tecolote (including Mt. Elbrus)	Southern Coast Live Oak Riparian Forest (SCLORF)	0.0200	In	In	Out	11/18/2002
		Tecolote Emergency Pipe Repair (Crossing)	Southern Coast Live Oak Riparian Forest (SCLORF)	0.0020	In	In	Out	
		Tecolote Emergency Pipe Repair (Crossing)	Emergent Wetland (EW)	0.0020	In	In	Out	



Mitigation Type	Mitigation Habitat	Project	Impact Habitat	Mitigation Acres	In/Adjacent/Out Watershed	In/Out Canyon	In/Out Project	Impact Date
Tecolote Canyon Wetland and Upland 4.5298								
Wetland Creation/Restoration	Riparian Forest (RF)	Tecolote LT	Mule Fat Scrub (MFS)	0.0100	In	In	Out	
		Tecolote LT	Southern Riparian Forest (SRF)	0.3410	In	In	Out	
		Tecolote MH 101 Emergency	Mule Fat Scrub (MFS)	0.0005	In	In	Out	
		Tecolote MH 101 Emergency	Non-Vegetated Channel (NVC)	0.0034	In	In	Out	
		Tecolote Mt. Ashmun Pipe Protection Emergency	Riparian Forest (RF)	0.0100	In	In	Out	01/17/2008
		Tecolote Mt. Ashmun Pipe Protection Erosion Contro	Riparian Forest (RF)	0.0020	In	In	Out	
		Tecolote North Exposed TS Emergency	Non-Vegetated Channel (NVC)	0.0010	In	In	Out	
		Tecolote Pipe Repair Near Manhole 346	Southern Riparian Forest (SRF)	0.0350	In	In	Out	
	Southern Willow Scrub (SWS)	Central Tecolote Sewer Break Emergency	Southern Willow Scrub (SWS)	0.0020	In	In	Out	01/26/2016
		Central Tecolote Sewer Break Emergency	Southern Riparian Forest (SRF)	0.0230	In	In	Out	01/26/2016
		East Tecolote (East Clairemont) LT	Southern Willow Scrub (SWS)	0.0170	In	Out	Out	
		East Tecolote (East Clairemont) LT	Southern Willow Scrub (SWS)	0.0100	In	Out	Out	
		East Tecolote (East Clairemont) LT	Southern Willow Scrub (SWS)	0.0010	In	Out	Out	
		East Tecolote (East Clairemont) LT	Southern Willow Scrub (SWS)	0.0030	In	Out	Out	
		East Tecolote Manholes 223 and 224 Emergency	Southern Willow Scrub (SWS)	0.0330	In	Out	Out	
		Park Mesa Way	Southern Willow Scrub (SWS)	0.1500	In	Out	Out	01/13/2000
		Tecolote (including Mt. Elbrus)	Southern Willow Scrub (SWS)	0.0200	In	In	Out	11/18/2002
		Tecolote (including Mt. Elbrus)	Southern Willow Scrub (SWS)	0.1100	In	In	Out	11/18/2002
		Tecolote 8 inch CI Sewer Main Replacement	Southern Willow Scrub (SWS)	0.0030	In	In	Out	
		Tecolote 8 inch CI Sewer Main Replacement	Southern Willow Scrub (SWS)	0.0020	In	In	Out	
		Tecolote Emergency Pipe Repair (Crossing)	Southern Willow Scrub (SWS)	0.0080	In	In	Out	
		Tecolote LT	Southern Willow Scrub (SWS)	0.0300	In	In	Out	
		Tecolote Mt. Ashmun Pipe Protection Erosion Contro	Southern Willow Scrub (SWS)	0.0010	In	In	Out	
		Tecolote Mt. Ashmun Pipe Protection Erosion Contro	Non-Vegetated Channel (NVC)	0.0010	In	In	Out	