

SALK NEIGHBORHOOD PARK & JOINT USE DEVELOPMENT

City of San Diego
Park and Recreation Board
November 16, 2017



Michael Baker
INTERNATIONAL

AGENDA

- General Development Plan Process and Schedule
- Project Site
- Site Analysis
- Community Workshop Summary
- Guiding Design Principles
- Schematic Design Alternatives
- General Development Plan
- Salk Neighborhood Park
- Maddox Neighborhood Park

GENERAL DEVELOPMENT PLAN PROCESS & SCHEDULE

Introductory Community Workshop

• March 8, 2016

Community Workshop #1

- Opportunities &
Constraints Plan
- Community Input
- Design Charrette

• August 9, 2016

Community Workshop #2

- Workshop #1
Summary
- Rest Room Facility

• March 14, 2017

*Develop
Design
Alternatives*

Community Workshop #3

- Present Schematic
Design Alternatives
- Community Input

• May 9, 2017

**Park &
Recreation
Board
Presentation**

• November 2017

**Mira Mesa
Recreation
Council
Committee
Presentation and
Approval**

• August 8, 2017

*City
Review*

*Develop Final
General
Development
Plan*

• July 2017

**City and School
District Input**

• May-June 2017

PROJECT SITE

Joint-Use Areas

- 2.1 Acres of hard court area and parking lot
- 2.0 Acres of play field area

City Park Area

- 4.1 Acres

Maddox Dog Park



SITE ANALYSIS



WORKSHOP #1

COMMUNITY INPUT

Activity 1 – Post-it Notes

Question:

- *What key issues do you know of at the park site and in the surrounding areas?*

Results:

- *Safety (rest rooms, lighting, and crime)*
- *Irrigation (water use)*
- *Lack of shade*
- *Lack of parking*

Question:

- *What elements would you like to see incorporated into the park?*

Results:

- *Walking trails*
- *Landscaping (native and drought tolerant)*
- *Rest rooms*
- *Athletic fields*
- *Dog park improvements*
- *Lighting*
- *Connection to Maddox Park*

Activity 2 – Group Discussions

Play Field Joint Use Area Design Features

- *Active use recreation (soccer, basketball, tennis, softball, etc.)*
- *Grass field*
- *Lights*

Maddox Park Dog Park Design Features

- *More trees and shade structures*
- *Needs rest room*
- *Water dog park*
- *Extend dog park*
- *Create small dog area in dog park*

City Park Design Features

- *Extend dog park*
- *Create small dog area in dog park*
- *Native and natural landscaping*
- *Walkways and trails within the park and connection to future trails*
- *Parking lot with lighted drop area (roundabout)*
- *Picnic areas and benches (some covered or shaded)*
- *Active use fields and passive use areas*
- *Water features / Water play areas*
- *Recreational facilities (amphitheater, workout stations, tennis courts)*
- *Lighting*

GUIDING DESIGN PRINCIPLES

- Create a beautiful space that serves the recreational needs of both the school and the community
- Provide both active and passive recreational opportunities
- Capture scenic views
- Incorporate sustainable design principles
- Connect to Maddox Park to create one large, recreational area
- Connect to trail system
- Provide rest room in location to serve both Salk Park and Maddox Park

WORKSHOP #3

SCHEMATIC DESIGN ALTERNATIVES



WORKSHOP #3

SCHEMATIC DESIGN ALTERNATIVES SUMMARY

- Prefer passive recreation of Alternative 'B' including:
 - *Amphitheater*
 - *Native Plant Gardens*
 - *Butterfly Garden*
 - *Garden Maze*
 - *Decomposed Granite Trails*
 - *Trailhead*
- Prefer rest room location of Alternative 'B'
- Prefer parking lot and drop-off of Alternative 'A'
- Prefer pedestrian access and dog park design of Alternative 'B'

GENERAL DEVELOPMENT PLAN



SALK NEIGHBORHOOD PARK

Joint-Use Area

- 2.0 Acres
- Large grass field area
- Shared rest room
- T-Ball backstop
- Running track (1/5th of a mile) of decomposed granite
- Fenced – access controlled by gates
- Walkway on outside of fence to connect to Maddox Park



SALK NEIGHBORHOOD PARK

City Park Area

- 4.1 Acres
- Vehicular and pedestrian access from Parkdale Avenue
- Parking lot (41 spaces, 2 ADA spaces)
- Entry monument
- Amphitheater / outdoor classroom



SALK NEIGHBORHOOD PARK



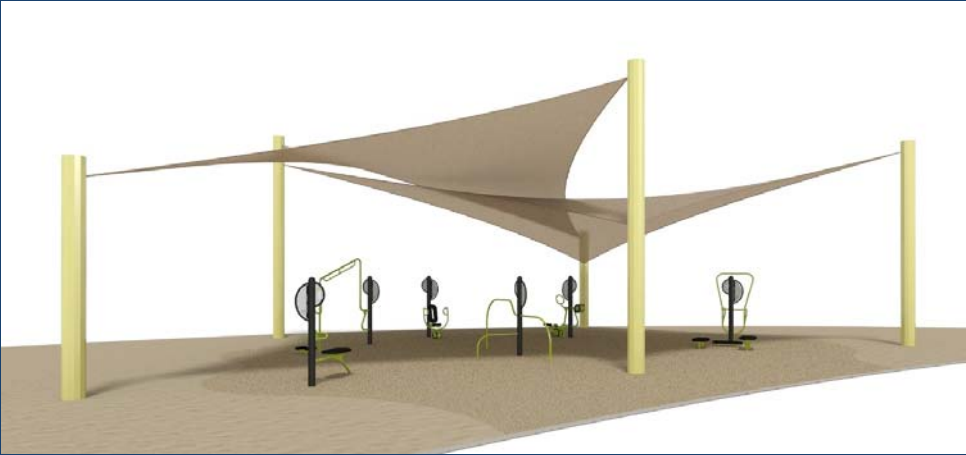
SALK NEIGHBORHOOD PARK

City Park Area

- *Playground for ages 2-5 & 5-12*
- *Outdoor exercise equipment*



SALK NEIGHBORHOOD PARK



SALK NEIGHBORHOOD PARK

City Park Area

- *Native gardens*
- *Decomposed granite pathways*
- *Garden art*



SALK NEIGHBORHOOD PARK



Coast Live Oak
Quercus agrifolia



Wild Lilac
Ceanothus species



Coast Sunflower
Encelia californica



Deer Grass
Muhlenbergia rigens



Sage
Salvia species



Toyon
Heteromeles arbutifolia

SALK NEIGHBORHOOD PARK



SALK NEIGHBORHOOD PARK

City Park Area

- *Butterfly garden & picnic area*
- *Human sun dial at trailhead connection*
- *Garden maze*



SALK NEIGHBORHOOD PARK



Center of Maze

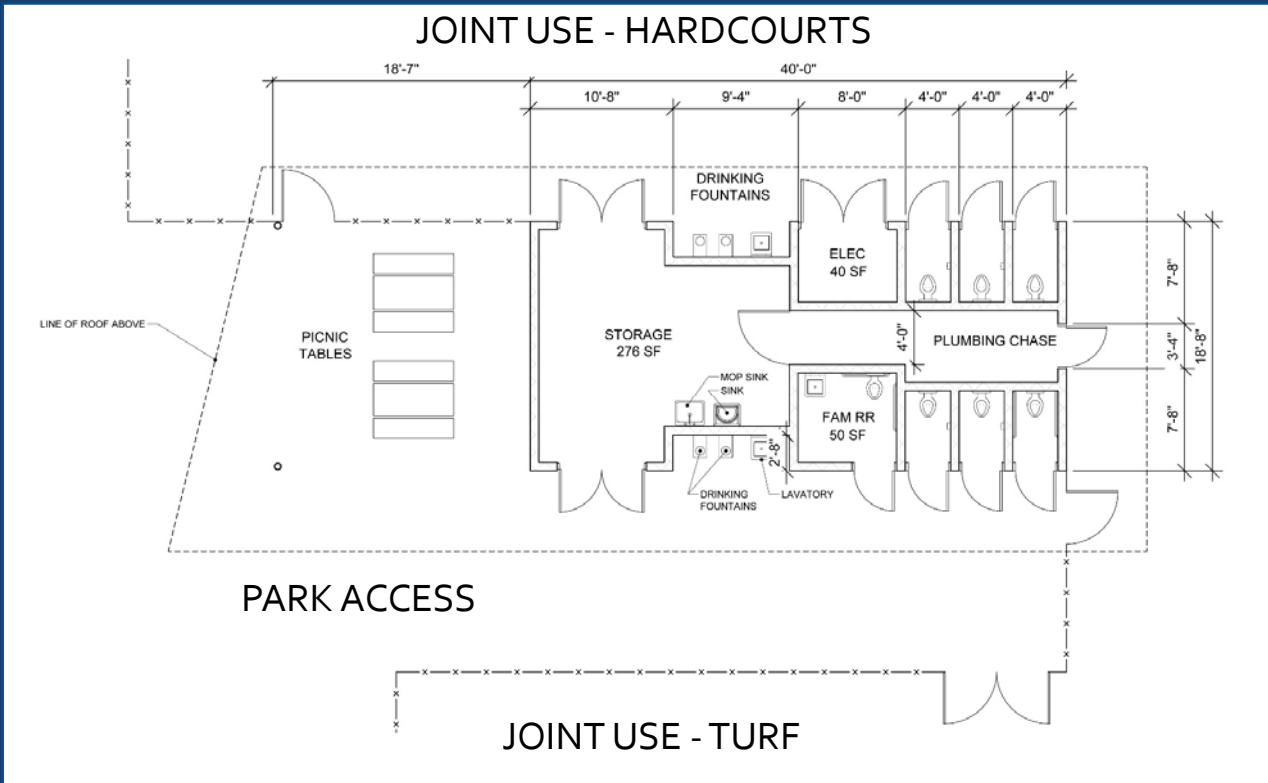
"It's a matter of being able to find meaning, whether it's positive or negative, in whatever you encounter. It's like a journey. It's like finding the paths that will allow you to go forward, or the paths that has a block that tells you to start over again."

-Jonas Salk 1991

SALK NEIGHBORHOOD PARK



REST ROOM

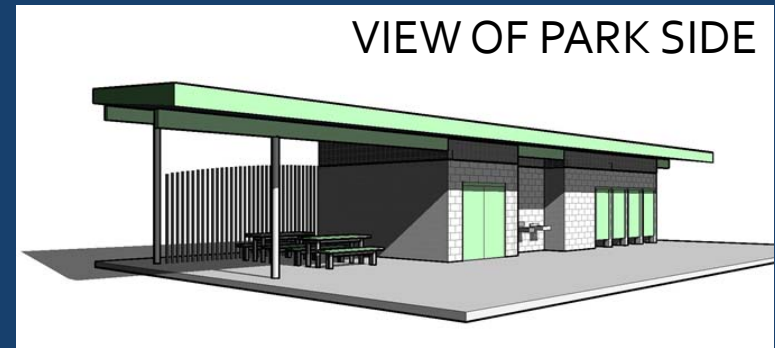


REST ROOM

VIEW OF PARK SIDE



VIEW OF PARK SIDE



VIEW OF SCHOOL SIDE



VIEW OF SCHOOL SIDE



MADDOX NEIGHBORHOOD PARK

Dog Park Area

- *Pedestrian connections to Flanders Drive*
- *Pedestrian connections to Salk Park with ADA stairs and ramp*
- *Water quality areas*



MADDOX NEIGHBORHOOD PARK

Dog Park Area

- *.15 Acre small dog park*
- *.71 Acre large dog park*
- *Double entry gates*
- *Shade sails*
- *Benches*
- *Dog drinking fountains*
- *Dog agility equipment*



THANK YOU



Michael Baker
INTERNATIONAL