

Planning Department

Old Town San Diego Community Plan Update Draft Recreation Element

Park and Recreation Board
January 18, 2018

Agenda Item 101 (Action)

Old Town San Diego Community



CPU Public Outreach & Timeline

2010-2012: Public Workshops; CPU Advisory Committee Meetings; Charrette; Park & Recreation Opportunities Analysis; Presentation to Presidio Park Council.

2015-2016: Planning Commission Workshop; Discussion Draft CPU and review with CPU Advisory Committee.

2016-2017: Equivalencies Presentations to CPU Advisory Committee and Presidio Park Committee; Revised Draft CPU

2018: Draft PEIR released for public review; Park & Recreation Board recommendation; CPG recommendation; CPU adoption hearings.



Old Town San Diego Community Plan Update (CPU) Summary

Current Population:	832	Existing Parks:	3.43 acres
Future Population:	2,430	Required Parks:	6.80 acres



El Campo Santo Pocket
Park



Presidio Community Park and Recreation
Center

Population-Based Parks

Existing Parks

- ❑ Presidio Community Park - 3.15 acres
- ❑ El Campo Santo Pocket Park - 0.28 acres

Proposed Parks

- ❑ Presidio Park Trails (Equivalency) – 3.37 acres



Proposed Park Equivalency

Presidio Park Trails (3.37 ac)

- Within Presidio Regional Park
- Improvements and amenities to include: enhanced trail surface, new trailheads, scenic overlooks, interpretive panels, benches, etc.





Old Town Draft Recreation Element Summary of Park Acreage

Existing Park Acreage	3.43 ac
Proposed Park Acreage	3.37 ac
Total Existing + Proposed Park Acreage	6.80 ac
Required Population-Based Park Acreage	6.80 ac

Recreation Center

Existing

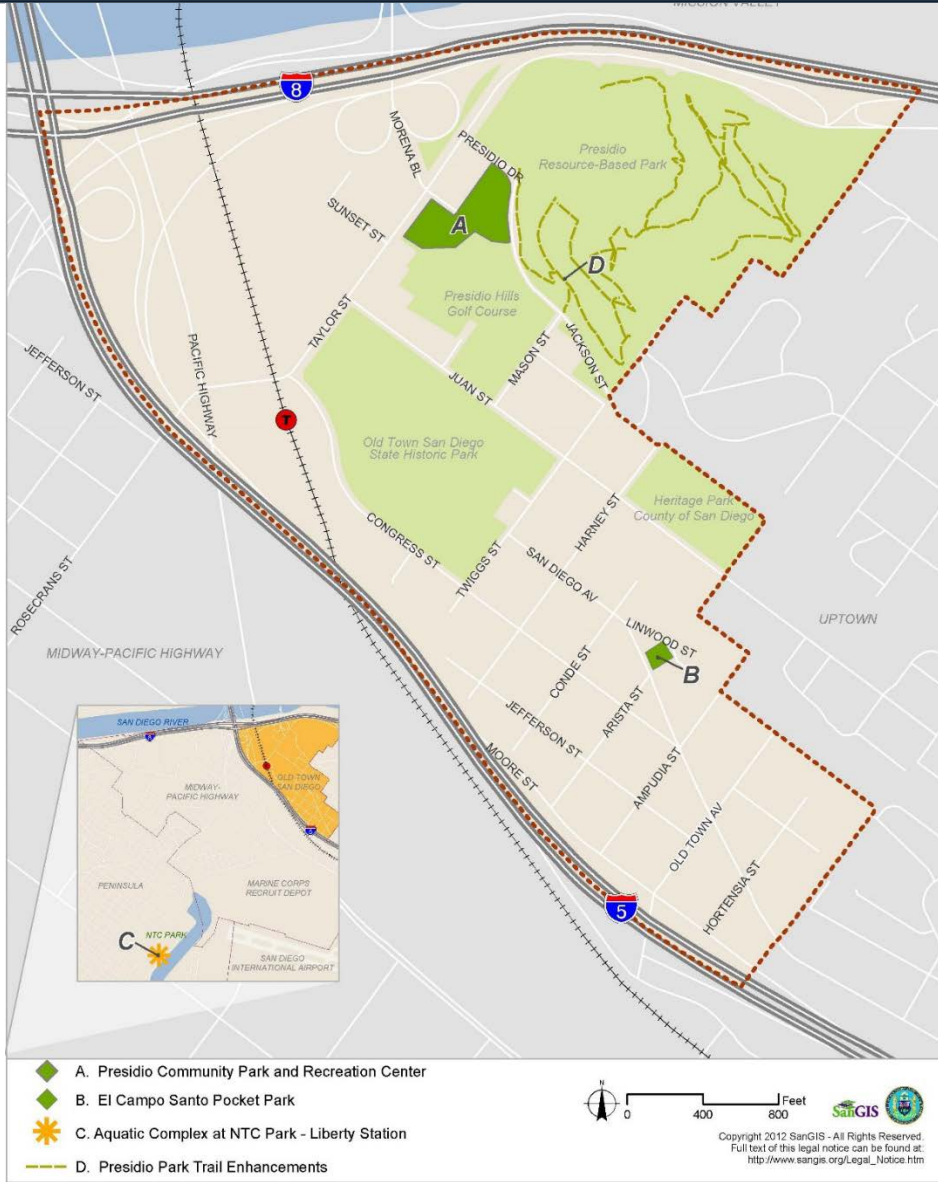
- ❑ Presidio Recreation Center (5,302 SF)
 - ❑ Meets future population-based needs under draft Community Plan

Aquatic Complex

Proposed

- ❑ NTC Park / Liberty Station – shared
- ❑ Second aquatic complex (site TBD) – shared





Old Town San Diego Community Plan Draft Recreation Element

Proposed Parks and Recreation Facilities

Planning Department

Old Town San Diego Community Plan Update Draft Recreation Element

Park and Recreation Board
January 18, 2018

Agenda Item 101 (Action)

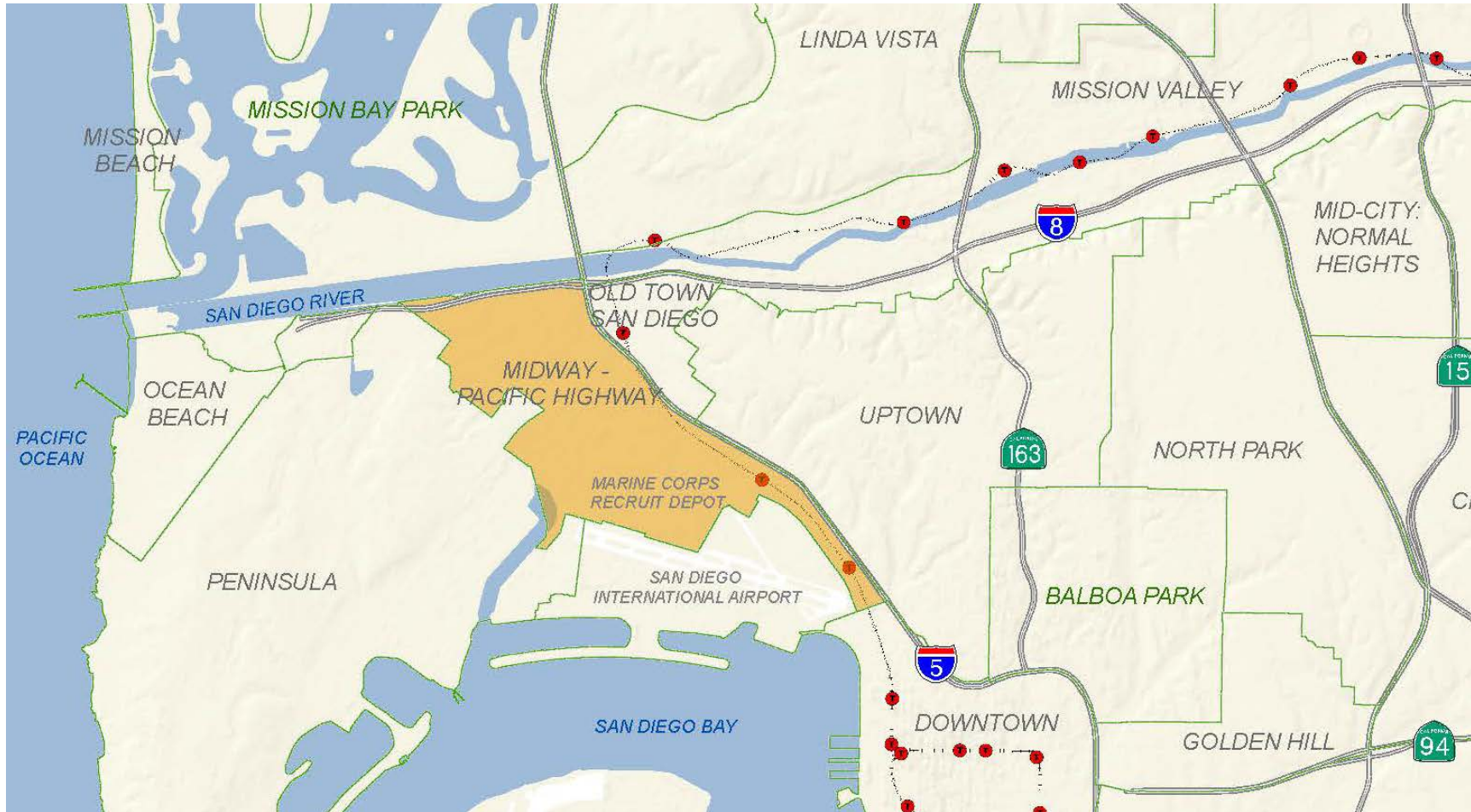
Planning Department

Midway-Pacific Highway Community Plan Update Draft Recreation Element

Park and Recreation Board
January 18, 2018

Agenda Item 102 (Action)

Midway-Pacific Highway Community



CPU Public Outreach & Timeline

2010-2014: Public Workshops; CPU Advisory Committees; Park & Recreation Opportunities Analysis; Discussion Draft CPU; Planning Commission Workshop

2015-2016: Planning Commission Workshop #2; Discussion Draft CPU and review with CPU Advisory Committee

2016-2017: Park and Recreation Board Presentation; Revised Draft CPU; Draft PEIR released for public review

2018: CPG recommendation; Park and Recreation Board recommendation; CPU Adoption



Midway-Pacific Highway Community Plan Update Summary

Current Population: 4,600

Existing Parks: 0 acres

Future Population: 27,070

Required Parks: 75.80 acres



Population-Based Parks

Existing Parks

- None

Proposed Traditional Parks

- Sports Arena Green (Neighborhood Park)
- Sports Arena Square (Mini Park)
- Dutch Flats Green (Neighborhood Park)

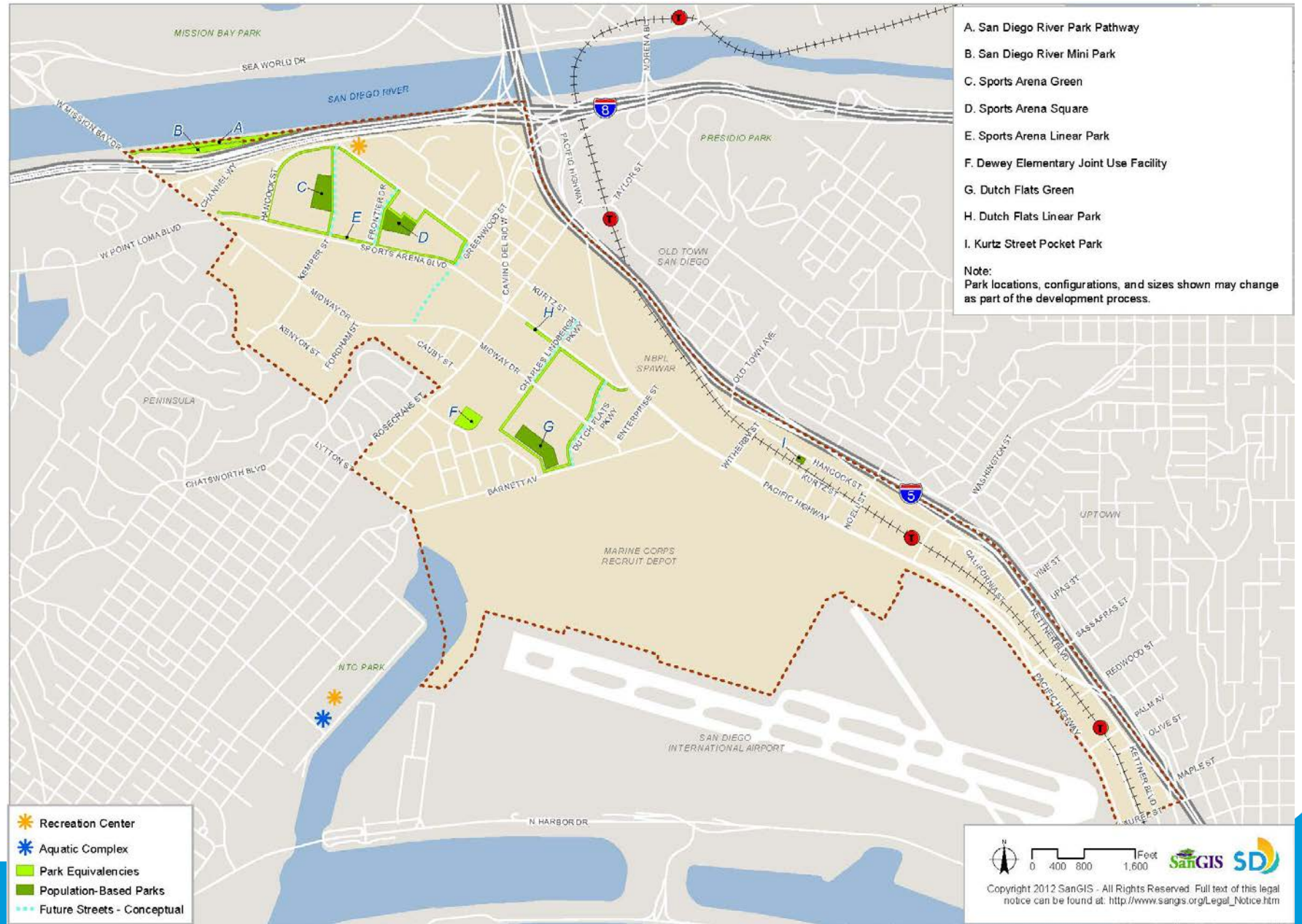


Proposed Park Equivalencies

- ❑ Non-Traditional Parks
 - ❑ Kurtz Street Pocket Park
 - ❑ San Diego River Mini Park
 - ❑ Sports Arena Linear Park
 - ❑ Dutch Flats Linear Park
- ❑ Joint-Use Facility
 - ❑ Dewey Elementary School
- ❑ Portions of a Resource Based Park
 - ❑ San Diego River Park Pathway within Mission Bay Park



Network of Proposed Parks and Recreation Facilities





Midway-Pacific Highway Draft Recreation Element Summary of Park Acreage

Existing Park Acreage	0 ac
Proposed Park Acreage	29.86 ac
Required Population-Based Park Acreage	75.80 ac
Population-Based Park Deficit at Full Community Development	45.94 ac

Recreation Center

Proposed:

- New facility in community on City-owned property
- Shared facility at NTC/Liberty Station

Aquatic Complex

Proposed:

- NTC/Liberty Station – Shared with Ocean Beach, Peninsula, Midway-Pacific Highway, and Old Town
- Additional complex (site TBD) – Shared with Ocean Beach, Peninsula, Midway-Pacific Highway, and Old Town



Midway-Pacific Highway Draft Recreation Element Proposed Parks and Recreation Facilities



Planning Department

Midway-Pacific Highway Community Plan Update Draft Recreation Element

Park and Recreation Board
January 18, 2018

Agenda Item 102 (Action)