

Planning Department

Lindbergh Schweitzer Elementary Joint Use Facility General Development Plan

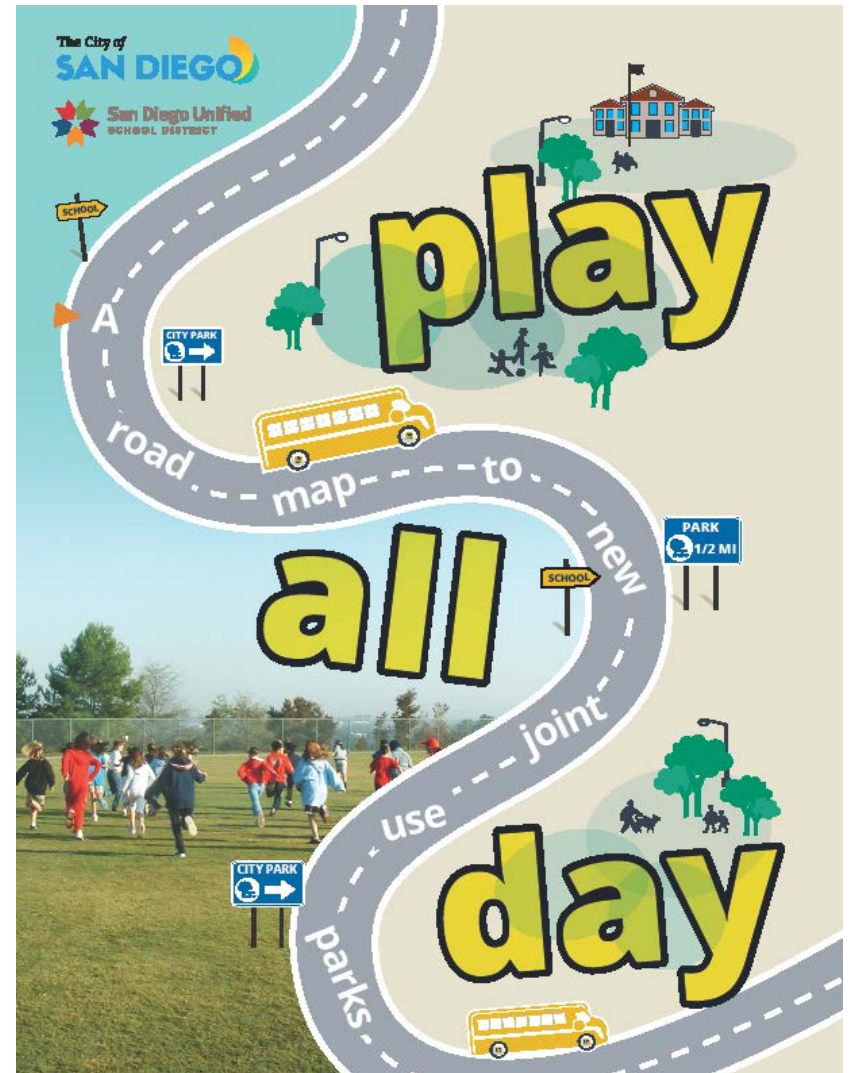
Park and Recreation Board
September 20, 2018

Action Item #101

Introduction

Play All Day Parks Program

- New initiative put forth by Mayor Kevin Faulconer and Superintendent Cindy Marten in 2016
- Over 45 new joint use facilities in the next 5-10 years.



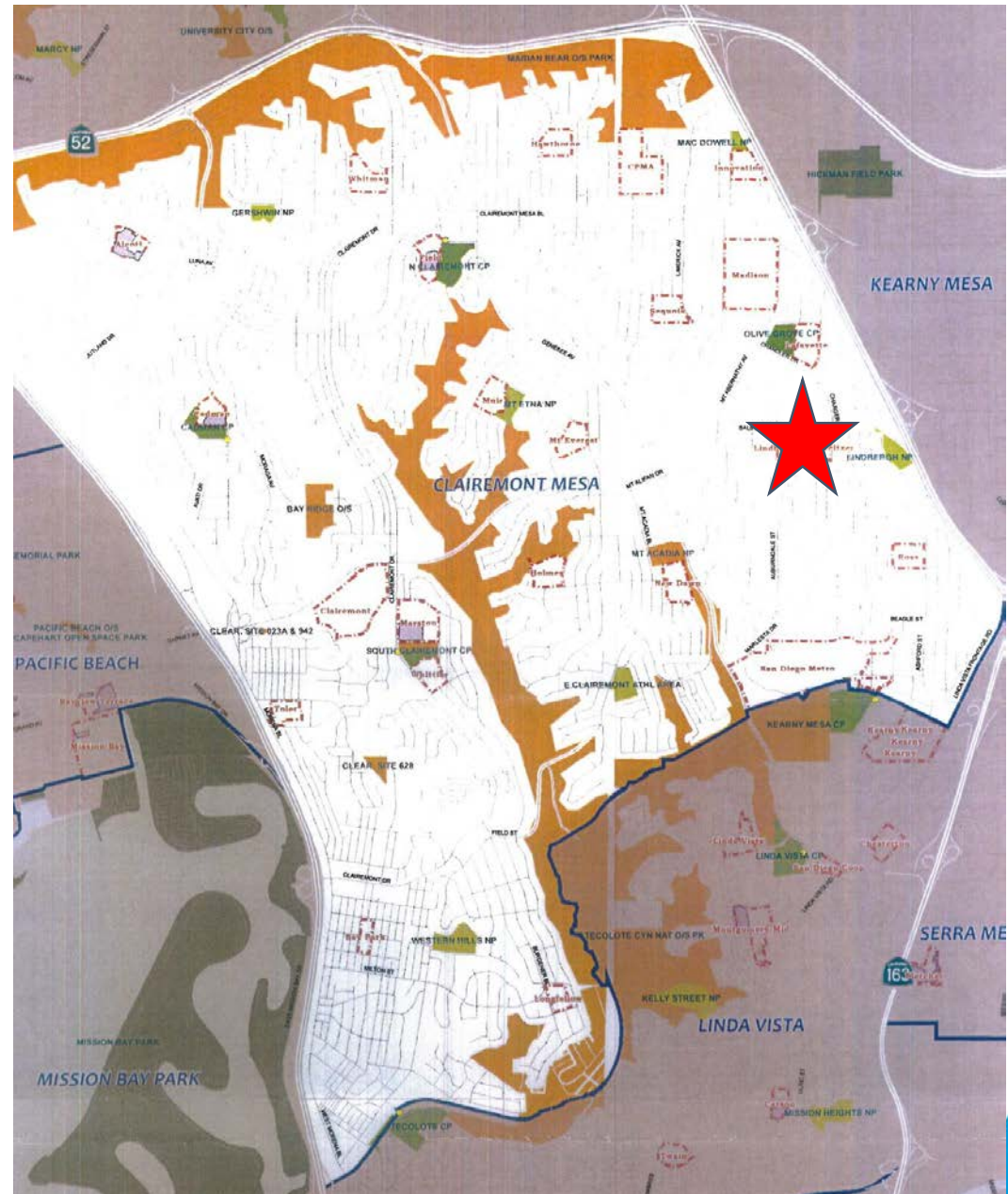
Background

Lindbergh Schweitzer Elem School

This project provides for the design and construction of a new joint use facility at Lindbergh Schweitzer Elementary School.

Located at 4133 Mt Albertine Avenue within the Clairemont Community, Council District 6.

Will provide approx. 2.62 acres of population based park land.



Project Scope

Design and construction of a multi-purpose natural turf field, walking track, drinking fountain, fencing and trees.

Funding for Design and Construction:

San Diego Unified School District
Proposition S & Z Capital
Improvement Bond Program



Site Location, Aerial Map



Discussion

Community Concerns

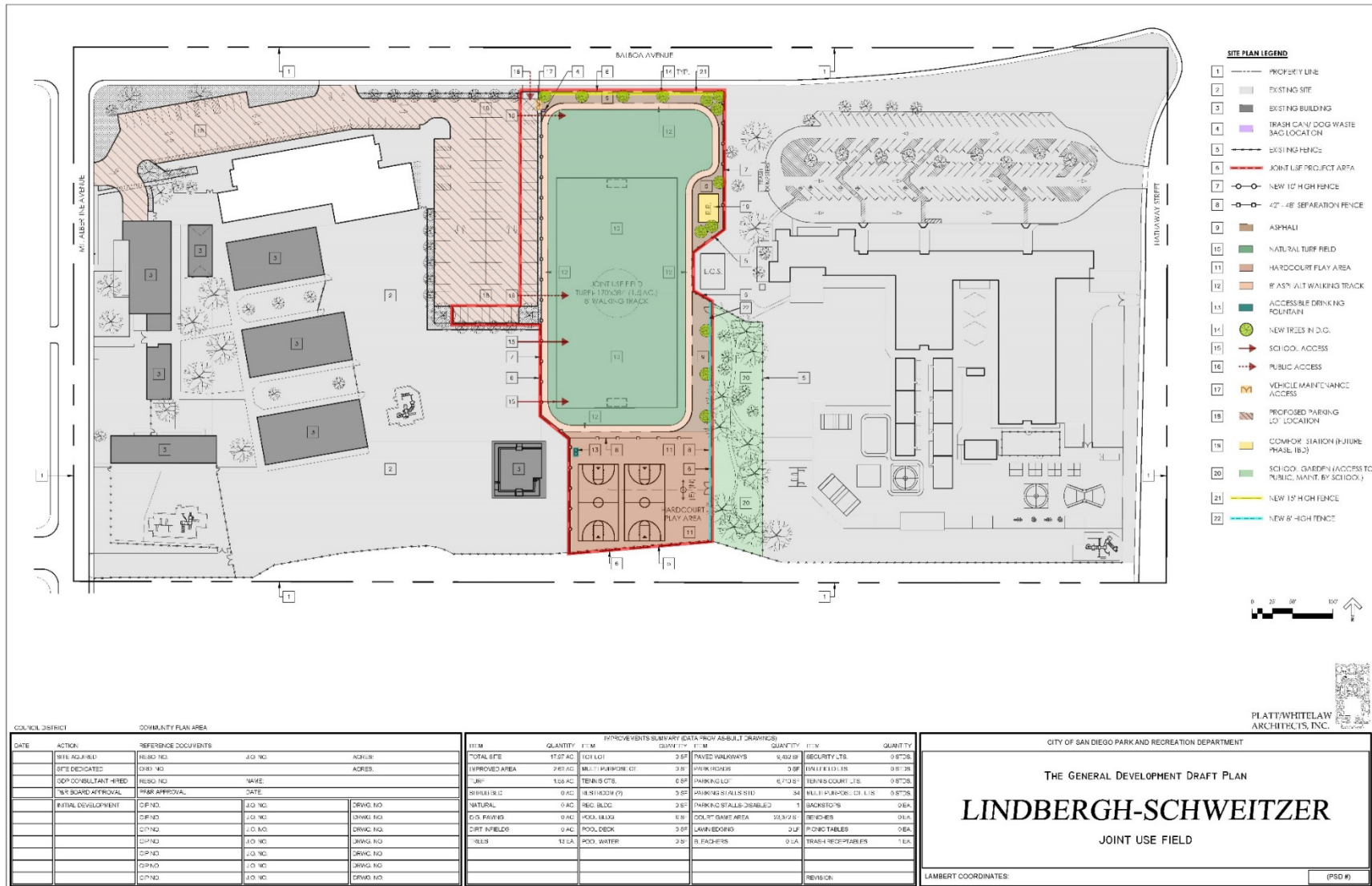
- Additional Fencing along Balboa Avenue
- Future Comfort Station
- Off-Street Parking

Recreation Council Recommendation

- On June 21, 2017, the Kearny Mesa Recreation Council voted (6-0-0) to recommend approval of the General Development Plan for Lindbergh-Schweitzer Elementary School Joint Use Facility.



General Development Plan



| COUNCIL DISTRICT | | | | COMMUNITY PLAN AREA | | | | | | |
|------------------|----------------------|---------------------|----------|---------------------|----------|--|----------|------|------------------------|--------|
| DATE | ACTION | REFERENCE DOCUMENTS | | ITEM | QUANTITY | IMPROVEMENTS SUMMARY (DATA FROM AS-BUILT DRAWINGS) | QUANTITY | ITEM | QUANTITY | |
| | SITE ACQUIRED | HELD NO. | J.O. NO. | | | PAVED WALKWAYS | 9,492.99 | | SECURITY LITS | 0.6758 |
| | SITE DEDICATED | DEED NO. | | | | MULTI-PURPOSE CT | 3.88 | | EMPTY FIELD LITS | 0.6128 |
| | DDP CONSULTANT HIRED | RESO. NO. | NAME | | | PARKING LOT | 6,719.21 | | TENNIS COURT LITS | 0.6726 |
| | TRA BOARD APPROVAL | PRM. APPROVAL | DATE | | | PARKING STALLS (2) | 3.85 | | MULTI-PURPOSE CT. LITS | 0.6726 |
| | INITIAL DEVELOPMENT | DP NO. | J.O. NO. | DRWG. NO. | | REC. BLDG | 2.87 | | BACKSTOPS | 0.64 |
| | | DP NO. | J.O. NO. | DRWG. NO. | | REC. BLDG | 1.89 | | BENCHES | 0.64 |
| | | DP NO. | J.O. NO. | DRWG. NO. | | POSS. DECK | 3.89 | | PICNIC TABLES | 0.64 |
| | | DP NO. | J.O. NO. | DRWG. NO. | | POSS. WATER | 2.89 | | TRASH RECEPTACLES | 1.64 |
| | | DP NO. | J.O. NO. | DRWG. NO. | | | | | | |



Recommendation

Recommend approval of the proposed General Development Plan (GDP) for the Lindbergh Schweitzer Elementary School Joint Use Facility