

Planning Department

**Mission Valley  
Community Plan Update  
Parks and Open Space Chapter**

Park and Recreation Board

June 16, 2016

Agenda Item 103



# Introduction

- ❑ Mission Valley Community Plan Update
  - ❑ Public input
  
- ❑ Parks and Open Space Chapter
  - ❑ Proposed parks
  
- ❑ Next Steps
  - ❑ Planning Commission

# Public Outreach

2015: Initial Public Workshop

2016-2018: Mission Valley Planning Group meetings; Mission Valley Planning Group Subcommittee meetings; Community Workshops



# Public Input

## Parks and Recreation Needs Assessment (Survey)

- Most requested facilities
  - Major parks (20+ acres)
  - Neighborhood parks (3-13 acres)
- Location opportunities
  - Publicly owned sites
  - Acquisition opportunities
- New recreation centers
  - Qualcomm, River Walk
- New aquatic complex
  - Qualcomm, Riverwalk
- Desired amenities
  - Trails
  - Joint use
  - Resource-based parks



# Population-based Parks:

## Existing

- Civita Central Park
- Sefton Field
- San Diego River Pathway

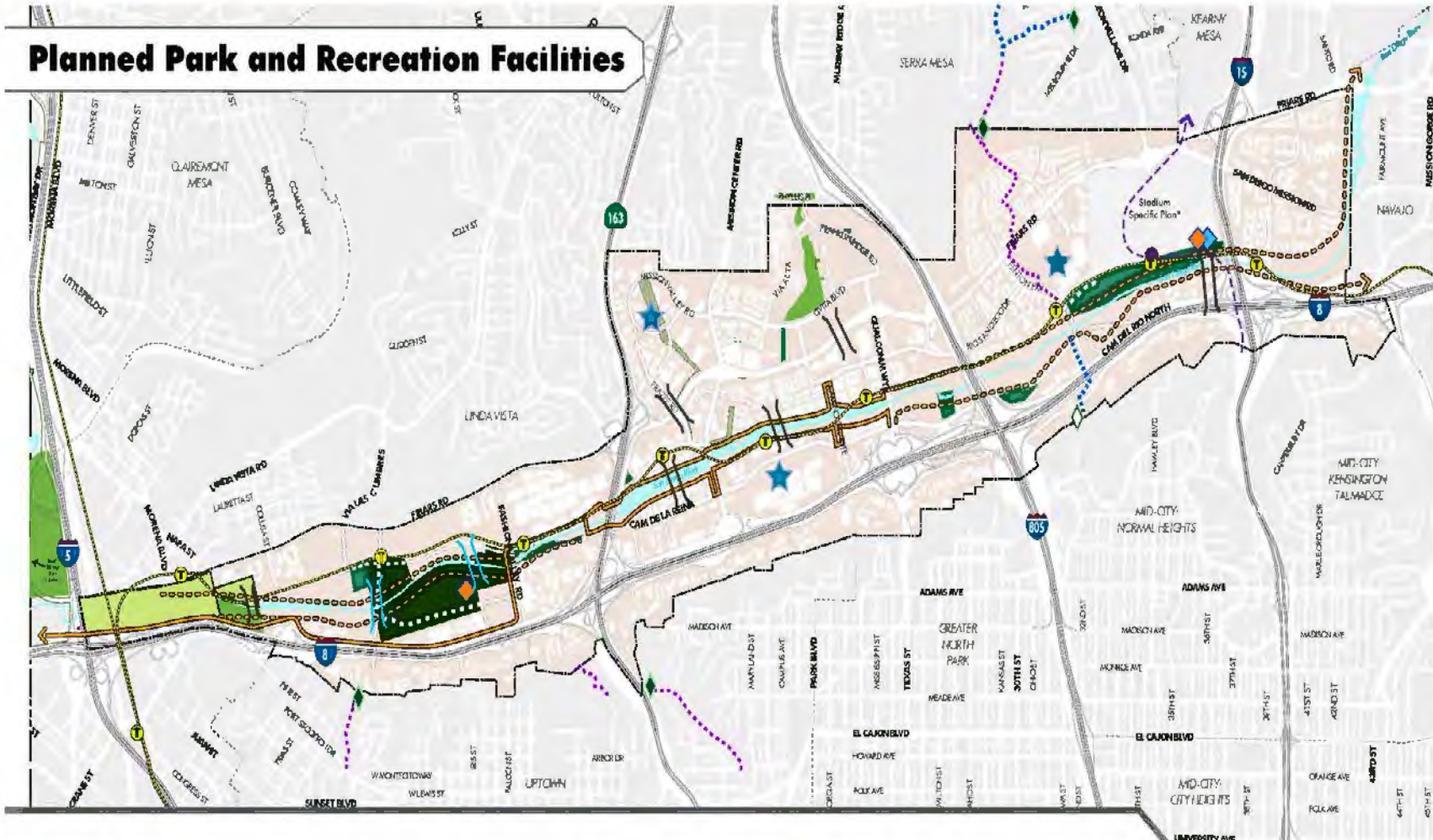
## Proposed

- Stadium Park
- Riverwalk Park
- Post Office Site  
Neighborhood Park
- Creekside Park

## Proposed con't

- Franklin Ridge Pock Park
- Hazard Center Pocket Park
- Public Utilities Site Special Activity  
Park
- Union Tribute Pocket Park
- Town and Country Park
- Phyllis Place Park
- South Shores (Mission Bay Park)
- Mission Valley Preserve

## Planned Park and Recreation Facilities



### General Information

- Trolley Stops
- Light Rail
- San Diego River
- Planned/Proposed Trolley Stops
- Freeways
- Mission Valley Community Plan Boundary
- San Diego Trolley Purple Line (Planned)
- Ramps
- Community Planning Areas
- Streams/Creeks
- Planned Roadway

### Park and Recreation Facilities and Infrastructure

- Existing Trailhead
- Open Space
- Proposed San Diego River Pathway
- Proposed Trailhead
- Existing Public Parks
- Existing San Diego River Pathway
- Potential Aquatic Center
- Proposed Park/Open Space
- Proposed Trails
- Potential Recreation Center
- Proposed Public Park/Park Equivalencies
- Existing Trails
- Potential Future Park/Urban Amenity
- Recreational Easement Opportunity
- Proposed Bridge
- Existing Bridge

\*Additional infrastructure will be added through the specific plans.





## Recreation Centers

Existing:

None

Proposed:

Mission Valley Recreation Center

## Aquatics Complex

Existing:

None

Proposed:

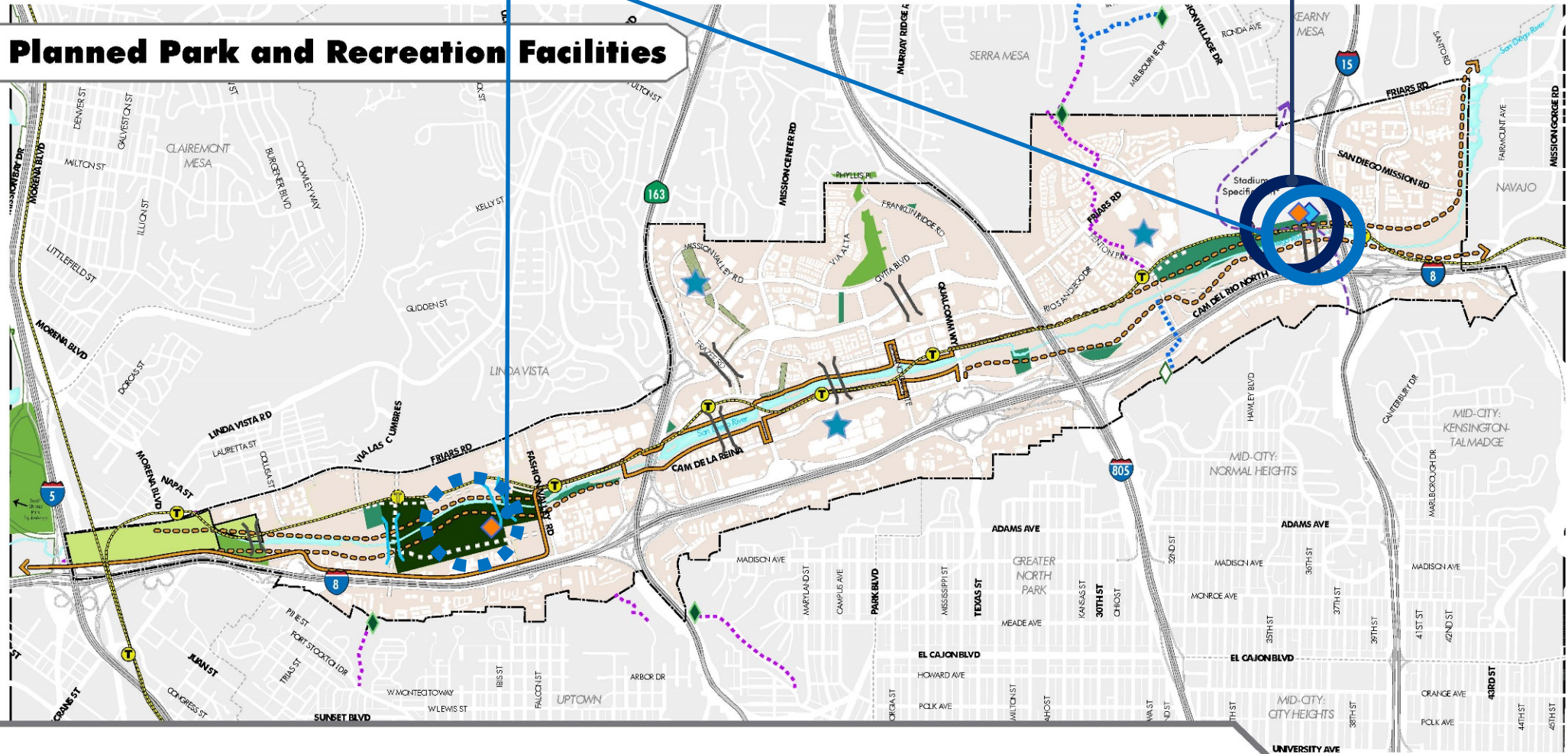
Mission Valley Aquatic Complex



# Recreation Centers

# AQUATIC COMPLEX

## Planned Park and Recreation Facilities



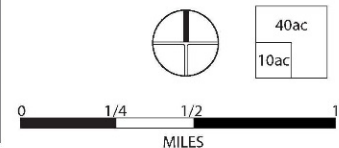
### General Information

- Trolley Stops
- Planned/Proposed Trolley Stops
- San Diego Trolley Purple Line (Planned)
- Light Rail
- Freeways
- Ramps
- Streams/Creeks
- Planned Roadway
- San Diego River
- Mission Valley Community Plan Boundary
- Community Planning Areas

### Park and Recreation Facilities and Infrastructure

- Existing Trailhead
- Proposed Trailhead
- Potential Aquatic Center
- Potential Recreation Center
- Potential Future Park/Urban Amenity
- Open Space
- Existing Public Parks
- Proposed Park/Open Space
- Proposed Public Park/Park Equivalencies
- Recreational Easement Opportunity
- Proposed San Diego River Pathway
- Existing San Diego River Pathway
- Proposed Trails
- Existing Trails
- Proposed Bridge
- Existing Bridge

\*Additional infrastructure will be added through the specific plan.







## South Shores at Mission Bay Park

❑ GDP process required

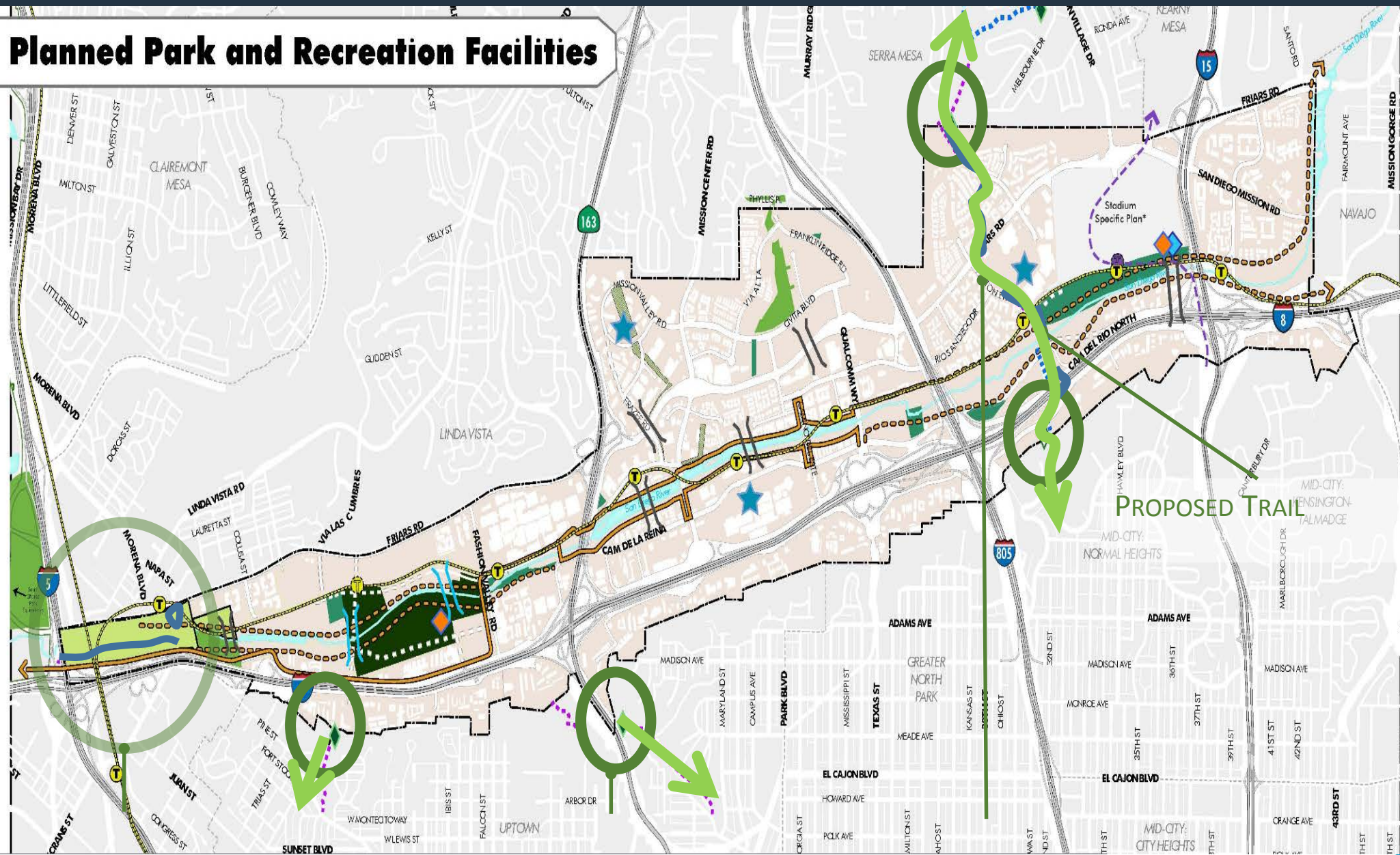


## Trails in Open Space Parks

❑ Mission Valley Preserve



# Planned Park and Recreation Facilities

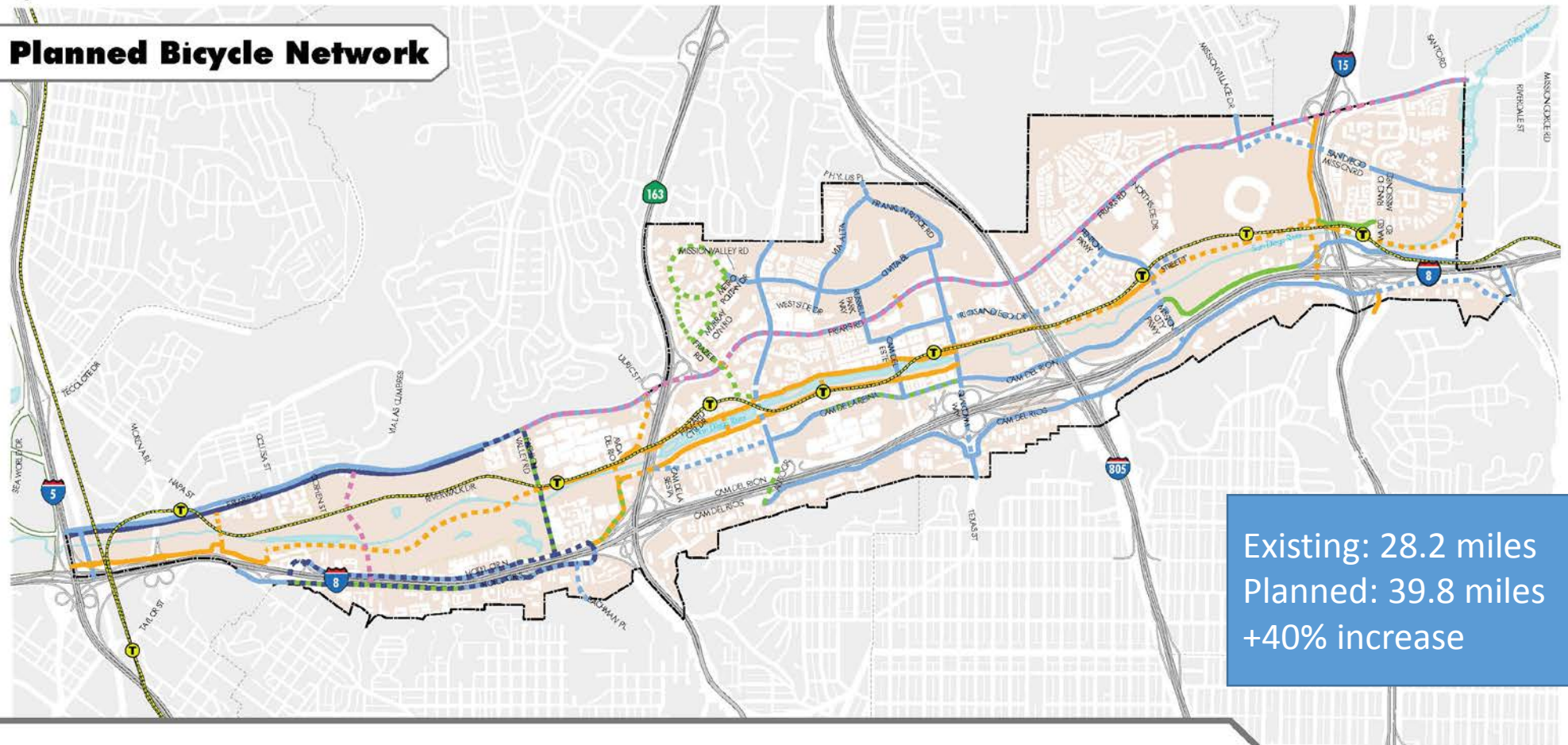


MISSION VALLEY PRESERVE

TRAILHEADS

EXISTING TRAILS

# Planned Bicycle Network



Existing: 28.2 miles  
 Planned: 39.8 miles  
 +40% increase

**General Information**

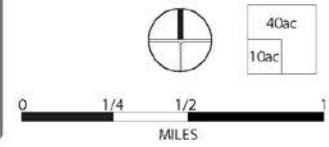
- Trolley Stops
- Light Rail
- Freeways
- Ramps
- Streams/Creeks
- Lakes/Ponds/Bays
- Mission Valley Community Plan Boundary
- Community Planning Areas

**Existing Bicycle Facilities**

- Class I - Bike Path
- Class II - Bike Lane
- Class III - Bike Route
- Class IV - Two-Way Cycle Track

**Proposed Bicycle Facilities**

- Class I - Bike Path
- Class II - Bike Lane
- Class III - Bike Route
- Class IV - One-Way Cycle Track
- Class IV - Two-Way Cycle Track





## Summary of Park Acreages

**Existing Park Acreage**

24.45 acres

**Proposed Park Acreage**

161.83 acres

**TOTAL: Existing + Proposed Park Acreage**

186.28 acres

**Required Park Acreage**

203 acres

Planning Department

Staff recommends that the  
Park and Recreation Board  
recommend approval of the

Mission Valley Community Plan Update –  
Parks and Open Space Chapter