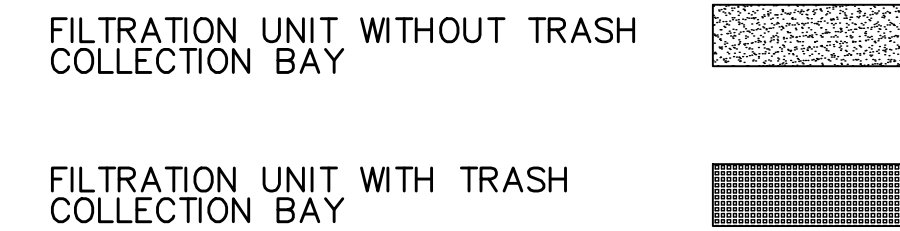


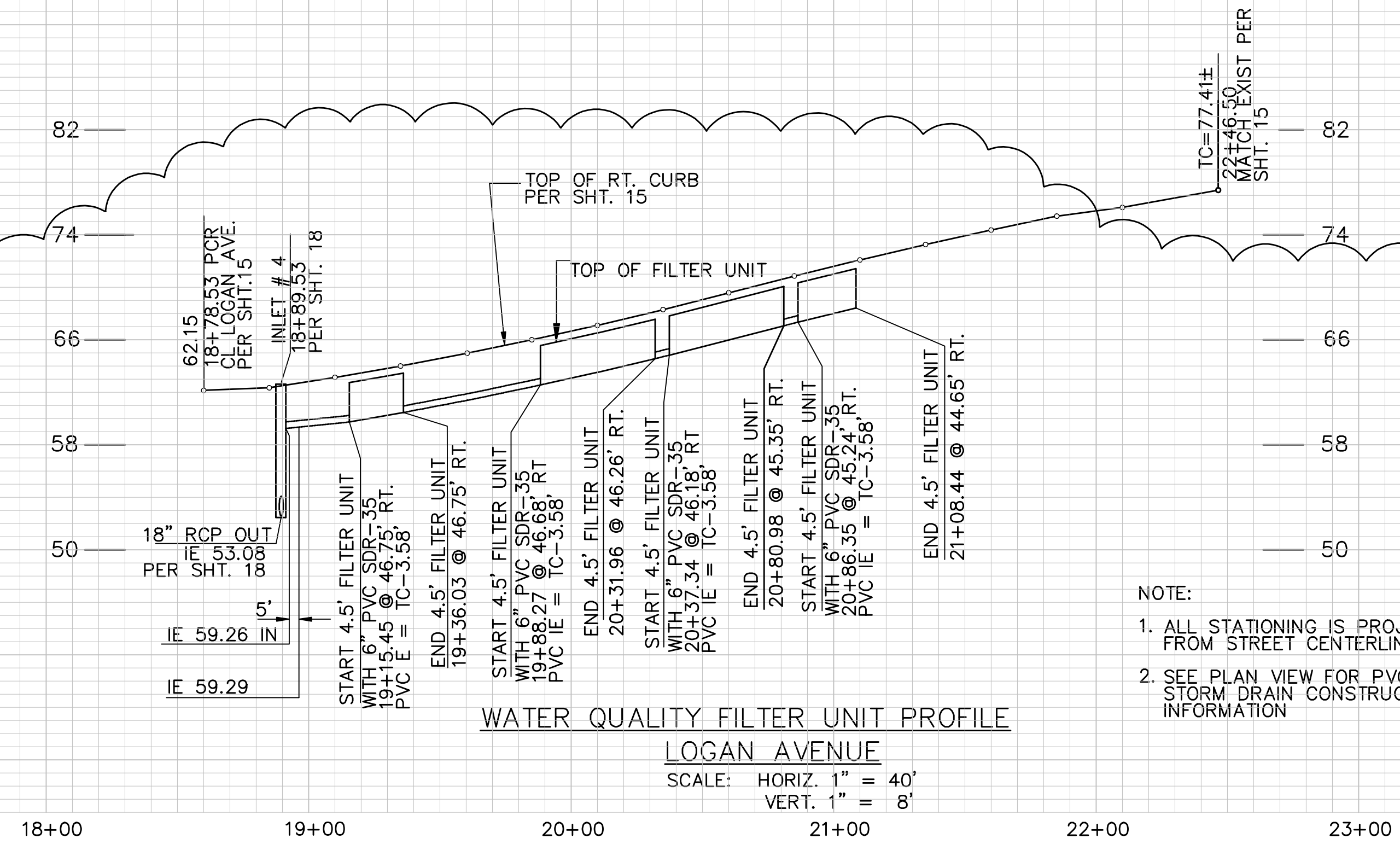
FILTRATION UNIT LEGEND



STORM DRAIN DATA				
NO.	DELTA OR BRG.	RADIUS	LENGTH	REMARKS
1	S 84° 8' 14" W		9.80	6" PVC (SDR-35) SOLID WALL
2	S 61° 38' 14" W		3.10	6" PVC (SDR-35) SOLID WALL
3	S 39° 8' 14" W		11.11	6" PVC (SDR-35) SOLID WALL
4	N 61° 38' 14" E		1.13'	6" PVC (SDR-35) SOLID WALL
5	N 61° 38' 14" E		19.33'	6" PERFORATED PVC (SDR-35)
6	N 61° 38' 14" E		25.02'	6" PVC (SDR-35) SOLID WALL
7	2° 10' 32"	697.25	26.48'	6" PVC (SDR-35) SOLID WALL
8	3° 13' 51"	697.25	39.32'	6" PERFORATED PVC (SDR-35)
9	0° 30' 48"	697.25	6.25'	6" PVC (SDR-35) SOLID WALL
10	3° 13' 52"	697.25	39.32'	6" PERFORATED PVC (SDR-35)
11	0° 30' 48"	697.25	6.25'	6" PVC (SDR-35) SOLID WALL
12	1° 35' 17"	697.25	19.32'	6" PERFORATED PVC (SDR-35)
13	0° 12' 57"	697.25	6.23'	6" PVC (SDR-35) SOLID WALL

WORK TO BE DONE

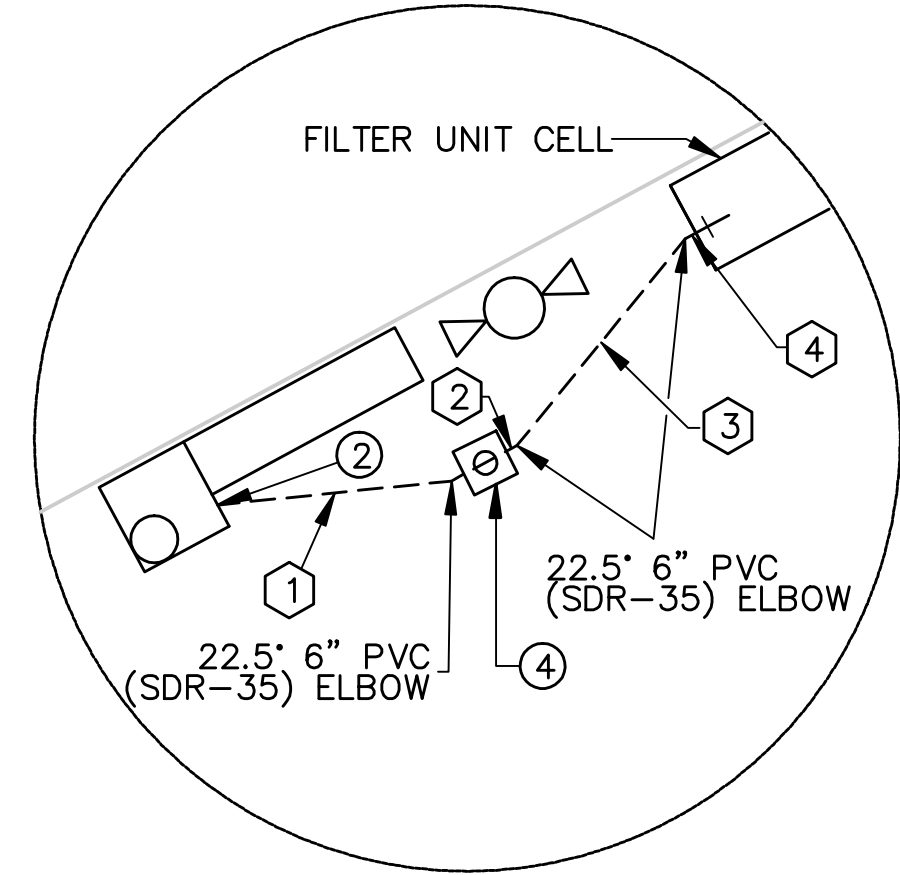
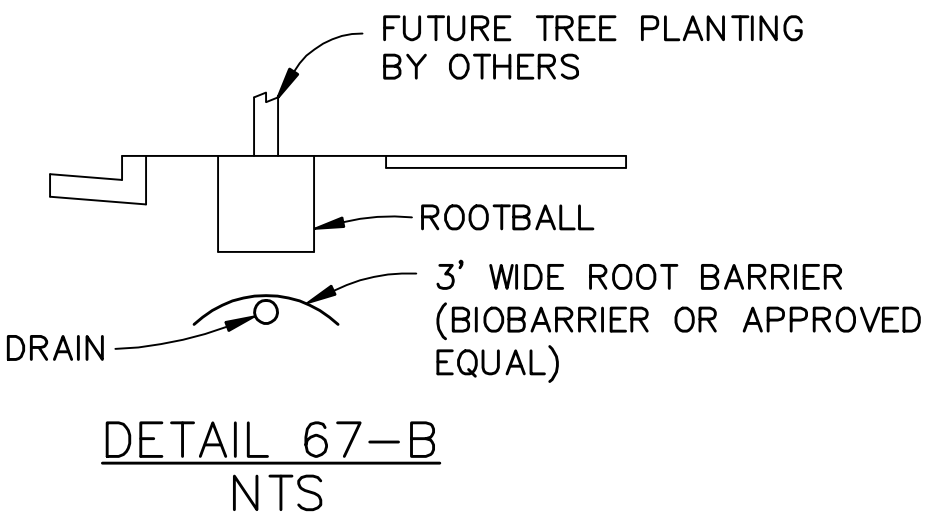
- CONSTRUCT WATER QUALITY FILTER UNIT PER DETAILS ON SHEETS 68-71
- CONSTRUCT 6" PVC SDR-35 STORM DRAIN. CONNECT TO SIDEWALL OF NEW CATCH BASIN. MORTAR CONNECTION TO SEAL VOIDS BETWEEN PVC OUTER WALL AND HOLE IN CATCH BASIN SIDE WALL. EXTEND STORM DRAIN 12" INTO CATCH BASIN. PVC STORM DRAIN TO SLOPE AT 0.50% FOR FINAL 5' PRIOR TO DRAINING IN TO CATCH BASIN.
- CONSTRUCT STORM DRAIN CLEANOUT PER SDRSD S-3 TYPE A
- CONSTRUCT STORM DRAIN CLEANOUT PER SDRSD S-3 TYPE B
- CONSTRUCT ROOT BARRIER PER DETAIL 67-B (TYPICAL BETWEEN FILTER UNIT CELLS)



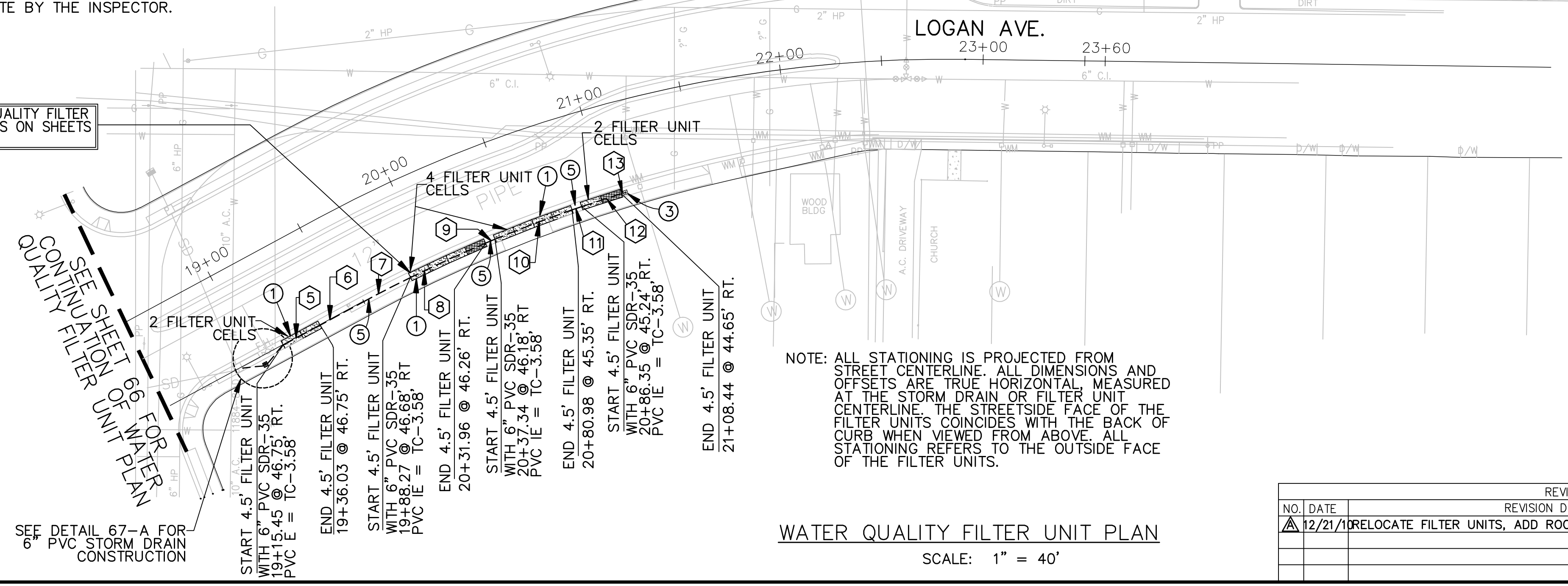
NOTE:
 1. ALL STATIONING IS PROJECTED FROM STREET CENTERLINE
 2. SEE PLAN VIEW FOR PVC STORM DRAIN CONSTRUCTION INFORMATION

CAUTION: EXACT LOCATION OF EXISTING UNDERGROUND UTILITIES UNKNOWN. CONTRACTOR TO VERIFY IN FIELD PRIOR TO CONSTRUCTION.

- MAINTENANCE NOTE:
- THIS PROJECT IS A WATERSHED PROTECTION PROJECT THAT THE STORM WATER DEPARTMENT IS INSTALLING FOR THE PURPOSES OF PILOTING NEW TECHNOLOGIES TO BE EVALUATED FOR THEIR USE IN TMDL COMPLIANCE. THE STORM WATER DEPARTMENT WILL BE MONITORING THE MAINTENANCE OF THESE BMPs AND MAY MODIFY THE MAINTENANCE PROCEDURE AND FREQUENCY BASED ON FINDINGS.
 - FILTER UNIT INLET AND TRASH COLLECTION BAYS SHALL BE MAINTAINED, CLEANED, AND REPAIRED AS NECESSARY.
 - FILTRATION MEDIA (TURFSTONE, VOLCANIC ROCK, FILTER SOIL AND GEOTEXTILE) SHALL BE INSPECTED FOR CLOGGING ANNUALLY BY TRAINED PERSONNEL. THE MEDIA SHALL BE REPAIRED OR REPLACED AS DEEMED APPROPRIATE BY THE INSPECTOR.

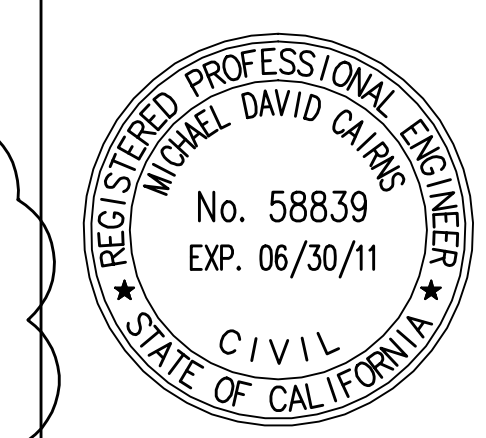
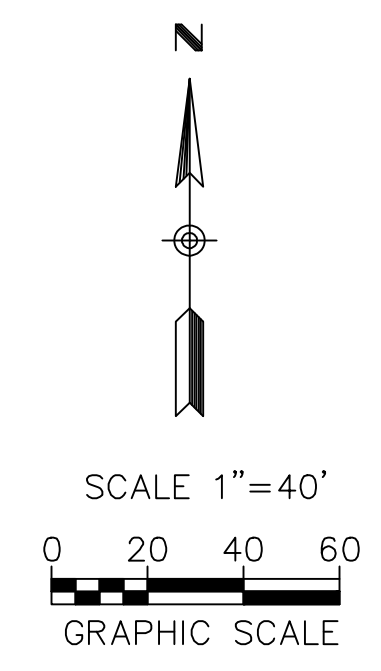


TYPICAL WATER QUALITY FILTER UNITS. SEE DETAILS ON SHEETS 68-71.



NOTE: ALL STATIONING IS PROJECTED FROM STREET CENTERLINE. ALL DIMENSIONS AND OFFSETS ARE TRUE HORIZONTAL, MEASURED AT THE STORM DRAIN OR FILTER UNIT CENTERLINE. THE STRAIN FACE OF THE FILTER UNITS COINCIDES WITH THE BACK OF CURB WHEN VIEWED FROM ABOVE. ALL STATIONING REFERS TO THE OUTSIDE FACE OF THE FILTER UNITS.

WATER QUALITY FILTER UNIT PLAN
 SCALE: 1" = 40'



WATER QUALITY PLAN FOR
LOGAN AVENUE

CITY OF SAN DIEGO, CALIFORNIA
 ENGINEERING DEPARTMENT
 SHEET 67 OF 77 SHEETS

FOR CITY ENGINEER		DATE		W.O. 112011	
DESCRIPTION	BY	APPROVED	DATE	FILMED	SECTION HEAD
FILE NAME:	DATE:				JAMES NABONG
					PROJECT MANAGER
					PROJECT ENGINEER
					192-1737
					LAMBERT COORDINATES
CONTRACTOR		DATE STARTED		27621-67-D	
INSPECTOR		DATE COMPLETED			

CONTRACTOR MUST NOTIFY THE BELOW LISTED AGENCY AT LEAST TWO (2) WORKING DAYS PRIOR TO COMMENCEMENT OF EXCAVATION:

UNDERGROUND SERVICE ALERT
 (USA) 1-800-422-4133

REVISIONS		
NO.	DATE	REVISION DESCRIPTION
1	12/21/11	RELOCATE FILTER UNITS, ADD ROOT BARRIER, REVISE STORM DRAIN