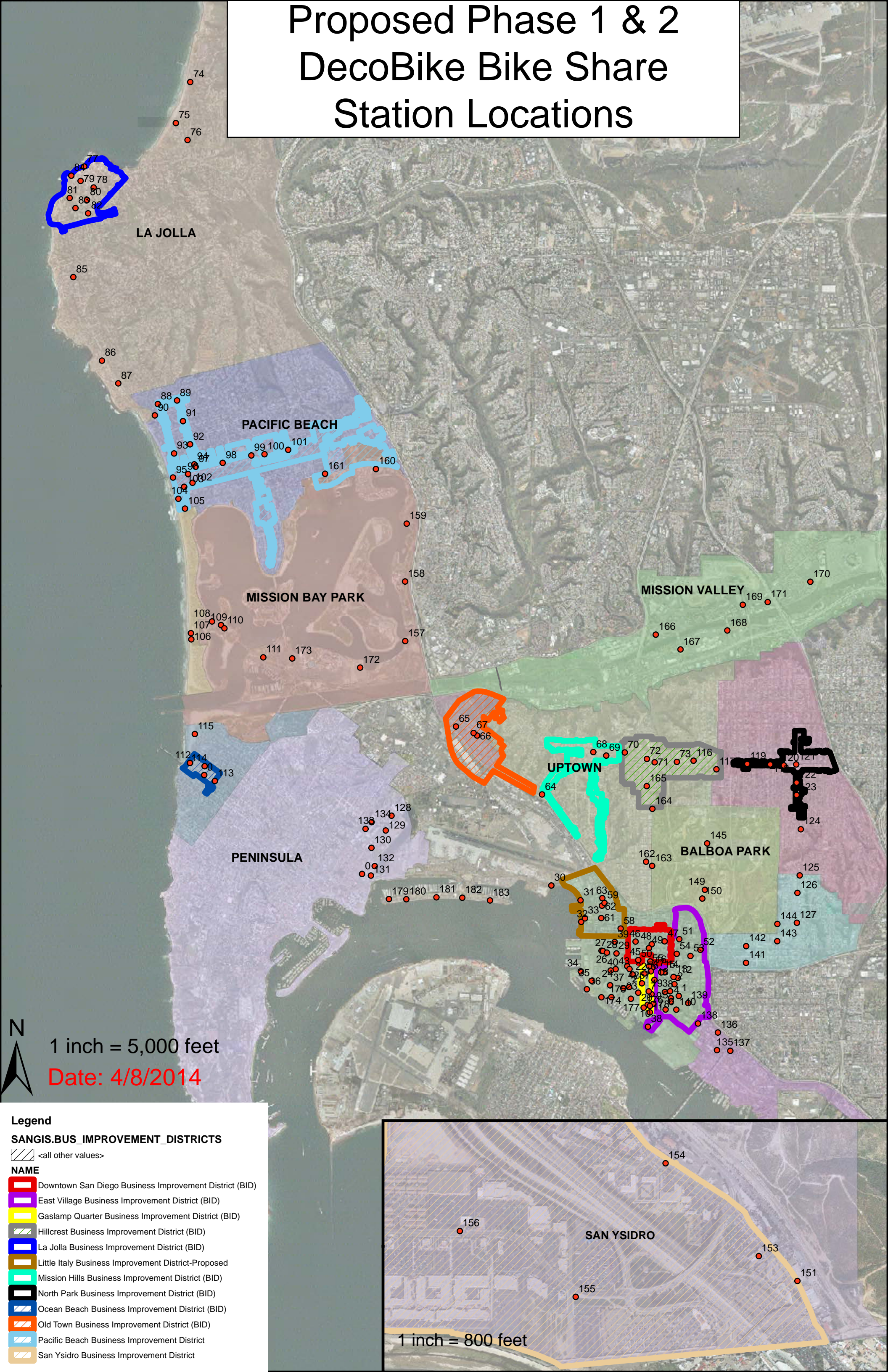


Proposed Phase 1 & 2 DecoBike Bike Share Station Locations



LA JOLLA

PACIFIC BEACH

MISSION BAY PARK

MISSION VALLEY

UPTOWN

BALBOA PARK

PENINSULA

SAN YSIDRO



1 inch = 5,000 feet

Date: 4/8/2014

Legend
SANGIS.BUS_IMPROVEMENT_DISTRICTS

- <all other values>
- NAME**
- Downtown San Diego Business Improvement District (BID)
- East Village Business Improvement District (BID)
- Gaslamp Quarter Business Improvement District (BID)
- Hillcrest Business Improvement District (BID)
- La Jolla Business Improvement District (BID)
- Little Italy Business Improvement District-Proposed
- Mission Hills Business Improvement District (BID)
- North Park Business Improvement District (BID)
- Ocean Beach Business Improvement District (BID)
- Old Town Business Improvement District (BID)
- Pacific Beach Business Improvement District
- San Ysidro Business Improvement District

1 inch = 800 feet