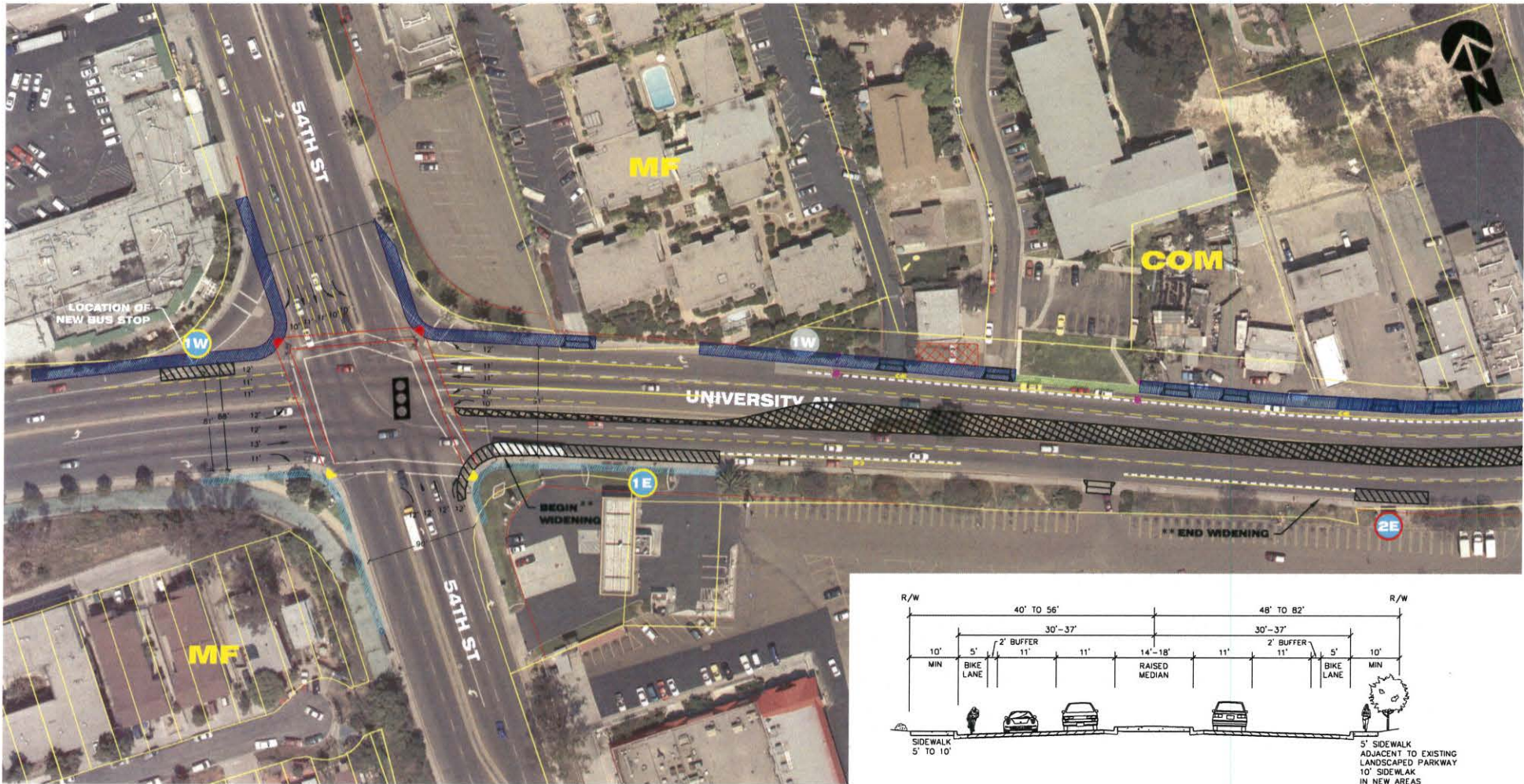
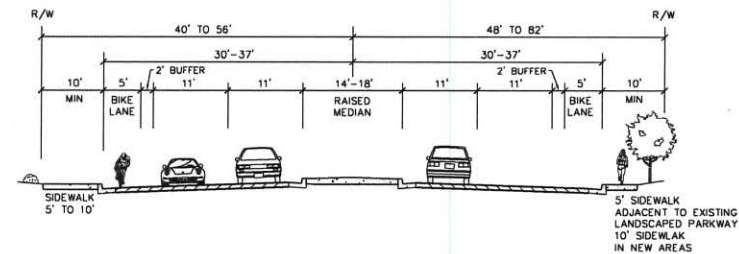




UNIVERSITY AVENUE MOBILITY PLAN-OPTION 3

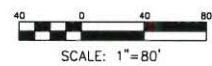


Elements of Mobility Plan



**DAVID EVANS
AND ASSOCIATES, INC.**

**Darnell
& ASSOCIATES, INC.**
TRANSPORTATION PLANNING
& TRAFFIC ENGINEERING



LEGEND

- EXIST. ADA COMPLIANT CURB RAMP
- PROPOSED CURB RAMP
- REPLACE EXIST. STREET LIGHT
- REPLACE EXIST. DRIVEWAY
- REMOVE EXIST. DRIVEWAY
- DISCREPANCY IN R.O.W.

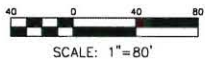
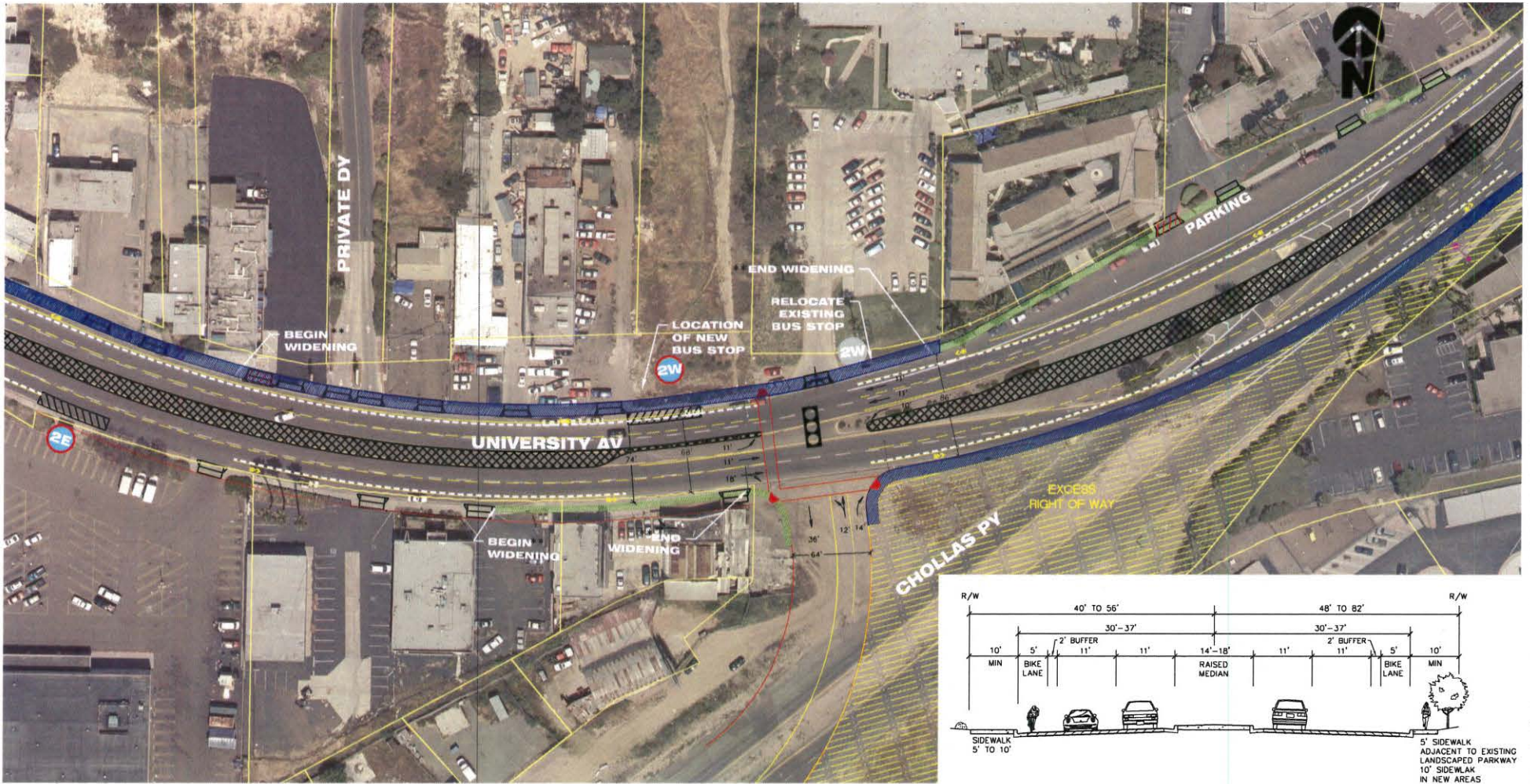
- REPLACE SIDEWALK - 10' WIDE
- REPLACE SIDEWALK - 5' WIDE
- WIDEN EXIST. SIDEWALK - 5'
- BUS ROUTE 7 BUS STOP #
- BUS ROUTE 10 BUS STOP #

- PROPOSED BUS PAD
- PROPOSED RAISED MEDIAN
- REMOVE/RESTRIPE PARKING
- RELOCATED EXIST. FENCE
- TRAFFIC SIGNAL - NEW/UPGRADE

**UNIVERSITY AVENUE
MOBILITY PLAN
OPTION 3**

**54TH STREET
SHEET 1 OF SHEET 11**

** LOCATIONS APPROXIMATE



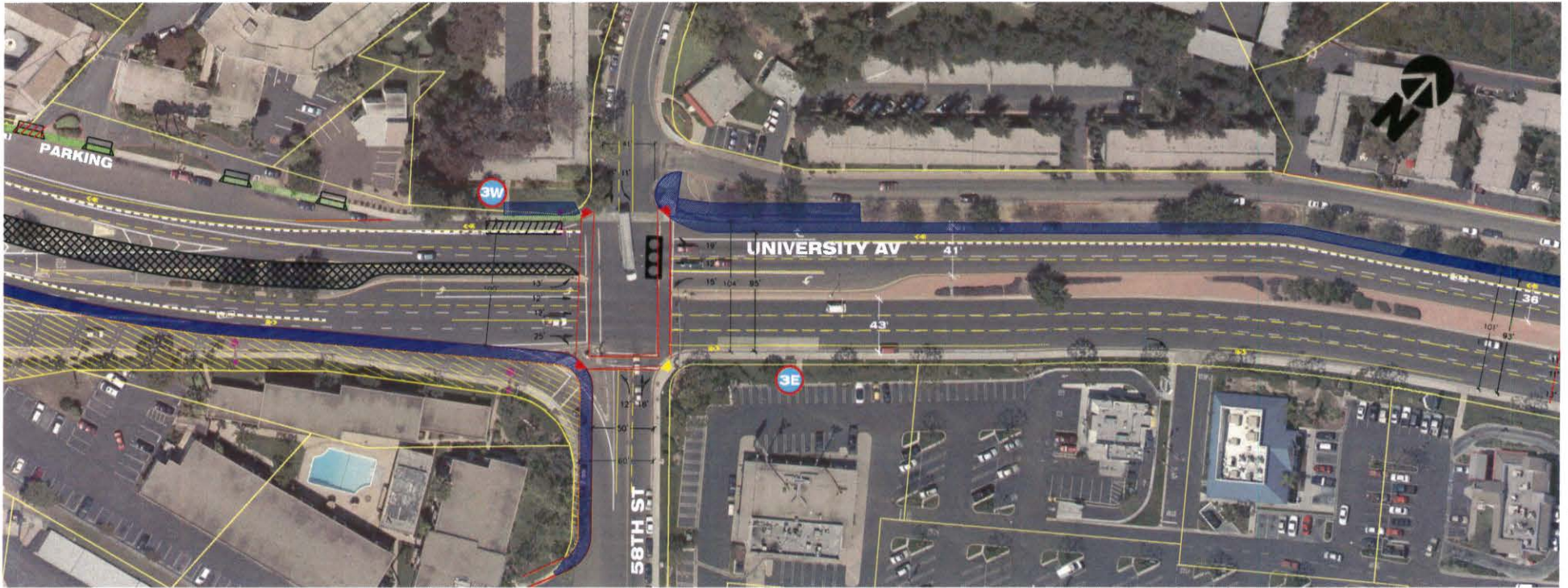
** LOCATIONS APPROXIMATE

LEGEND

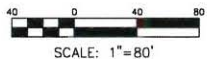
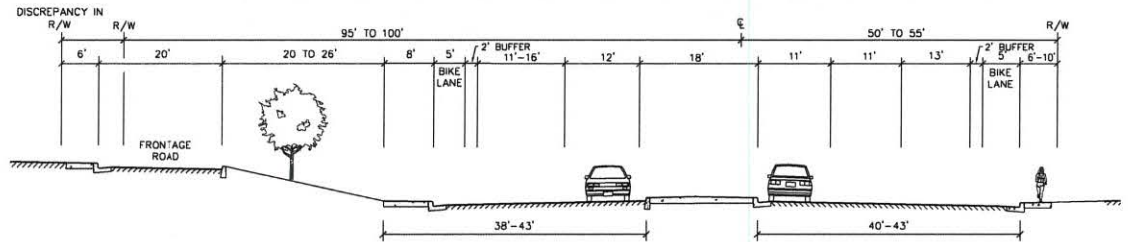
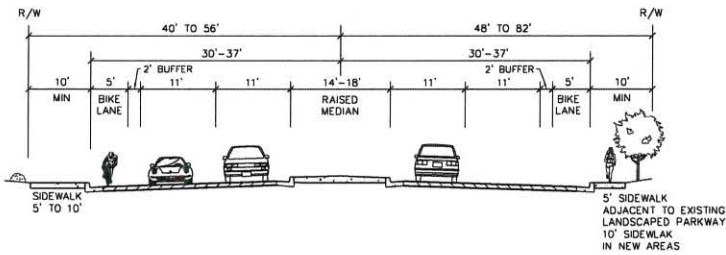
- | | | | | | |
|--|--------------------------------|--|-----------------------------|--|------------------------------|
| | EXIST. ADA COMPLIANT CURB RAMP | | REPLACE SIDEWALK - 10' WIDE | | PROPOSED BUS PAD |
| | PROPOSED CURB RAMP | | REPLACE SIDEWALK - 5' WIDE | | PROPOSED RAISED MEDIAN |
| | REPLACE EXIST. STREET LIGHT | | WIDEN EXIST. SIDEWALK - 5' | | REMOVE/RESTRIPE PARKING |
| | REPLACE EXIST. DRIVEWAY | | BUS ROUTE 7 BUS STOP # | | RELOCATED EXIST. FENCE |
| | REMOVE EXIST. DRIVEWAY | | BUS ROUTE 10 BUS STOP # | | TRAFFIC SIGNAL - NEW/UPGRADE |
| | DISCREPANCY IN R.O.W. | | | | |

**UNIVERSITY AVENUE
MOBILITY PLAN
OPTION 3**

**CHOLLAS PARKWAY
SHEET 2 OF SHEET 11**



Elements of Mobility Plan

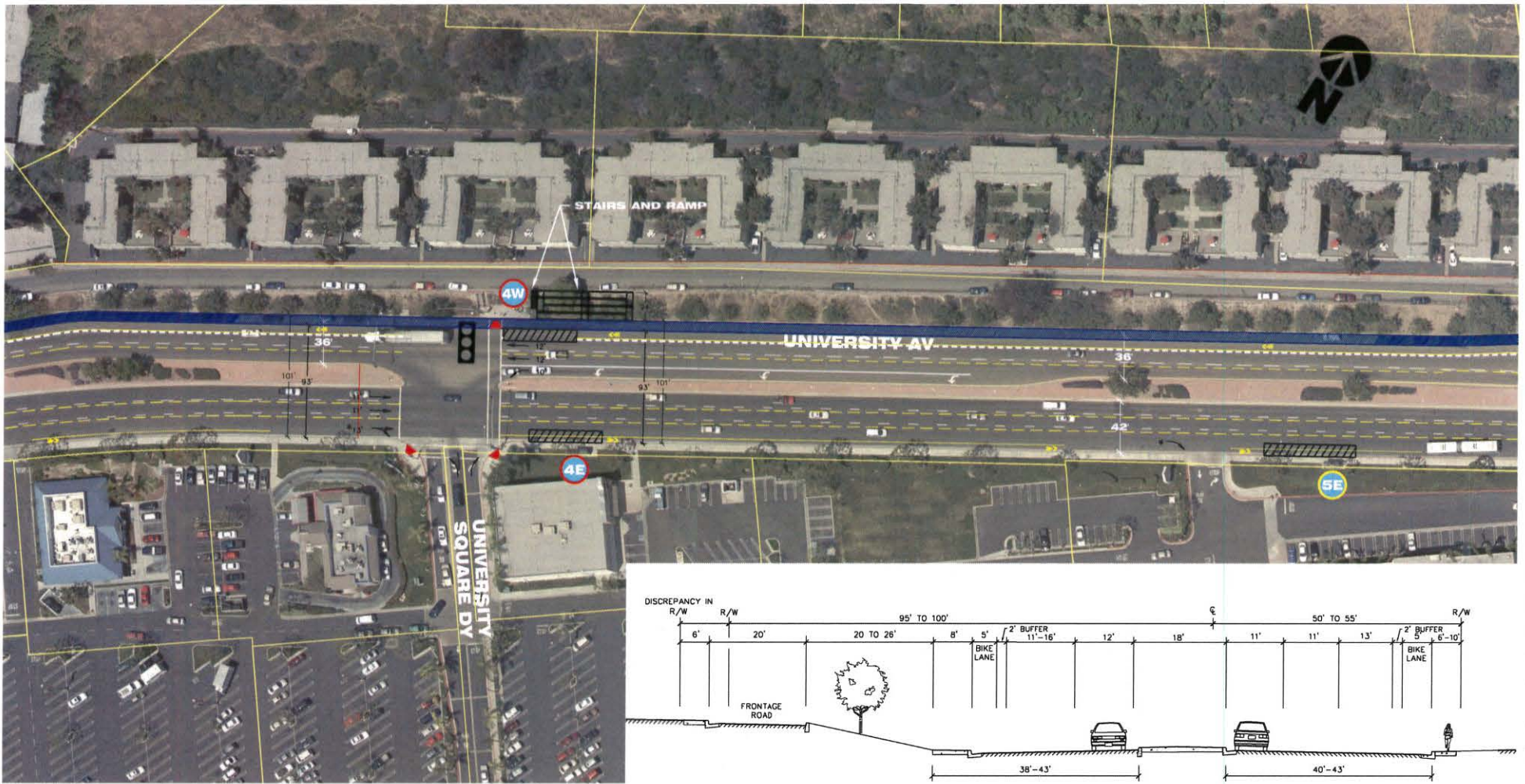


LEGEND

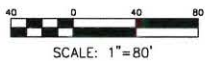
- EXIST. ADA COMPLIANT CURB RAMP
- PROPOSED CURB RAMP
- REPLACE EXIST. STREET LIGHT
- REPLACE EXIST. DRIVEWAY
- REMOVE EXIST. DRIVEWAY
- DISCREPANCY IN R.O.W.
- REPLACE SIDEWALK - 10' WIDE
- REPLACE SIDEWALK - 5' WIDE
- WIDEN EXIST. SIDEWALK - 5'
- BUS ROUTE 7 BUS STOP #
- BUS ROUTE 10 BUS STOP #
- PROPOSED BUS PAD
- PROPOSED RAISED MEDIAN
- REMOVE/RESTRIPE PARKING
- RELOCATED EXIST. FENCE
- TRAFFIC SIGNAL - NEW/UPGRADE

**UNIVERSITY AVENUE
MOBILITY PLAN
OPTION 3**

**58TH STREET
SHEET 3 OF SHEET 11**



Darnell & Associates, Inc.
TRANSPORTATION PLANNING
& TRAFFIC ENGINEERING



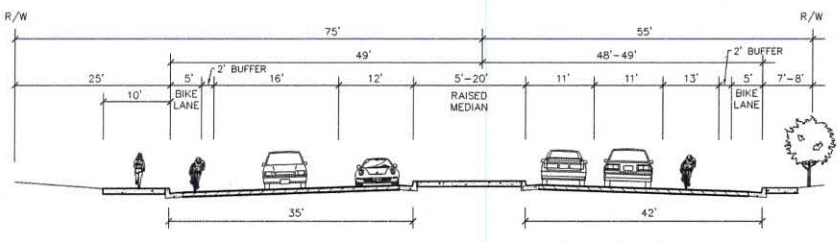
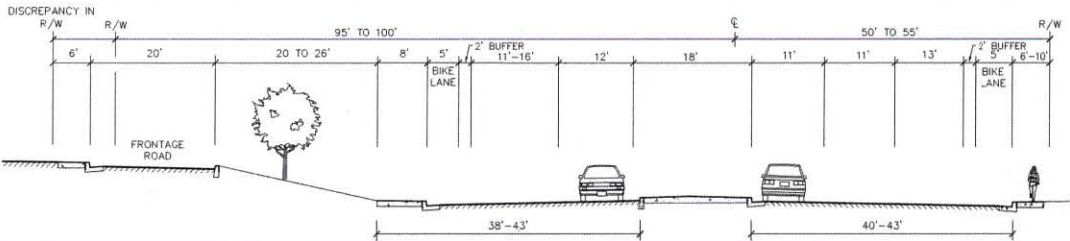
* BICYCLE/TRANSIT THROUGH LANE
VEHICLES RIGHT TURN ONLY.

LEGEND

- | | | | | | |
|--|--------------------------------|--|-----------------------------|--|------------------------------|
| | EXIST. ADA COMPLIANT CURB RAMP | | REPLACE SIDEWALK - 10' WIDE | | PROPOSED BUS PAD |
| | PROPOSED CURB RAMP | | REPLACE SIDEWALK - 5' WIDE | | PROPOSED RAISED MEDIAN |
| | REPLACE EXIST. STREET LIGHT | | WIDEN EXIST. SIDEWALK - 5' | | REMOVE/RESTRIPE PARKING |
| | REPLACE EXIST. DRIVEWAY | | BUS ROUTE 7 BUS STOP # | | RELOCATED EXIST. FENCE |
| | REMOVE EXIST. DRIVEWAY | | BUS ROUTE 10 BUS STOP # | | TRAFFIC SIGNAL - NEW/UPGRADE |
| | DISCREPANCY IN R.O.W. | | | | |

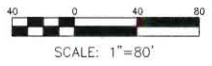
**UNIVERSITY AVENUE
MOBILITY PLAN
OPTION 3**

UNIVERSITY SQUARE
SHEET 4 OF SHEET 11



DAVID EVANS AND ASSOCIATES, INC.
TRANSPORTATION PLANNING & TRAFFIC ENGINEERING

Darnell & ASSOCIATES, INC.
TRANSPORTATION PLANNING & TRAFFIC ENGINEERING

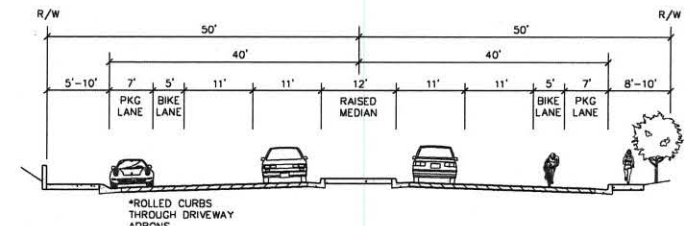
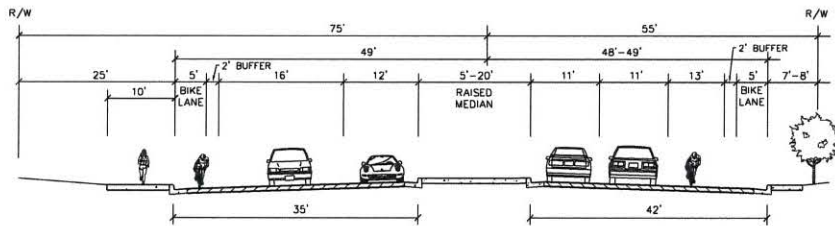


	EXIST. ADA COMPLIANT CURB RAMP		REPLACE SIDEWALK - 10' WIDE		PROPOSED BUS PAD
	PROPOSED CURB RAMP		REPLACE SIDEWALK - 5' WIDE		PROPOSED RAISED MEDIAN
	REPLACE EXIST. STREET LIGHT		WIDEN EXIST. SIDEWALK - 5'		REMOVE/RESTRIPE PARKING
	REPLACE EXIST. DRIVEWAY		BUS ROUTE 7 BUS STOP #		RELOCATED EXIST. FENCE
	REMOVE EXIST. DRIVEWAY		BUS ROUTE 10 BUS STOP #		TRAFFIC SIGNAL - NEW/UPGRADE
	DISCREPANCY IN R.O.W.				

UNIVERSITY AVENUE MOBILITY PLAN OPTION 3

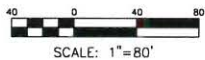
60TH STREET SHEET 5 OF SHEET 11

Elements of Mobility Plan



DAVID EVANS AND ASSOCIATES, INC.
TRANSPORTATION PLANNING & TRAFFIC ENGINEERING

Darnell & ASSOCIATES, INC.
TRANSPORTATION PLANNING & TRAFFIC ENGINEERING



LEGEND

- EXIST. ADA COMPLIANT CURB RAMP
- PROPOSED CURB RAMP
- REPLACE EXIST. STREET LIGHT
- REPLACE EXIST. DRIVEWAY
- REMOVE EXIST. DRIVEWAY
- DISCREPANCY IN R.O.W.

- REPLACE SIDEWALK - 10' WIDE
- REPLACE SIDEWALK - 5' WIDE
- WIDEN EXIST. SIDEWALK - 5'
- BUS ROUTE 7 BUS STOP #
- BUS ROUTE 10 BUS STOP #

- PROPOSED BUS PAD
- PROPOSED RAISED MEDIAN
- REMOVE/RESTRIPE PARKING
- RELOCATED EXIST. FENCE
- TRAFFIC SIGNAL - NEW/UPGRADE

UNIVERSITY AVENUE MOBILITY PLAN OPTION 3

COLLEGE AVENUE SHEET 6 OF SHEET 11



Elements of Mobility Plan

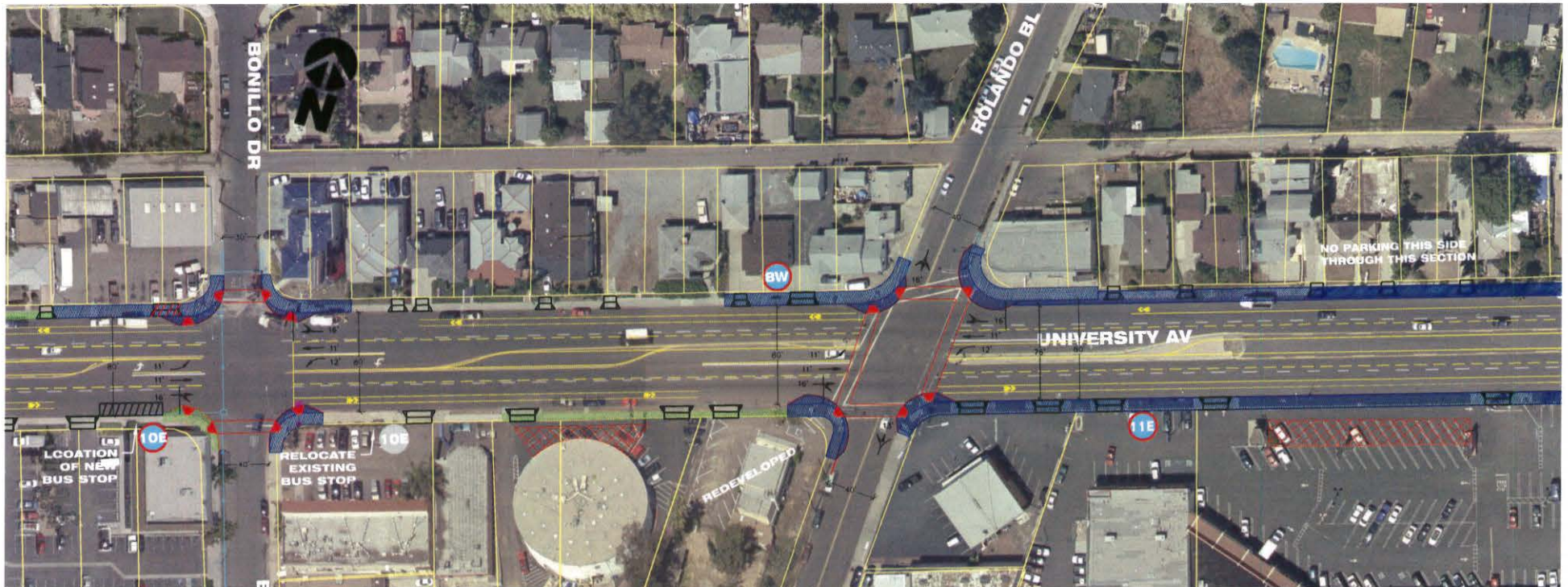


LEGEND

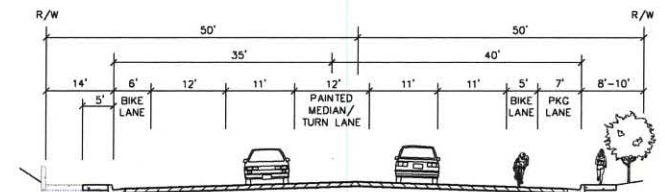
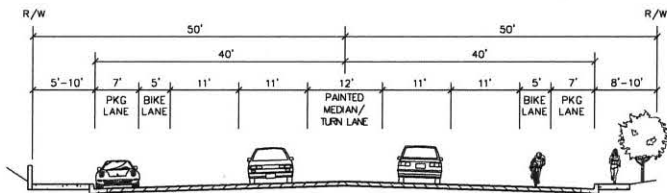
- | | | | | | |
|--|--------------------------------|--|-----------------------------|--|------------------------------|
| | EXIST. ADA COMPLIANT CURB RAMP | | REPLACE SIDEWALK - 10' WIDE | | PROPOSED BUS PAD |
| | PROPOSED CURB RAMP | | REPLACE SIDEWALK - 5' WIDE | | PROPOSED RAISED MEDIAN |
| | REPLACE EXIST. STREET LIGHT | | WIDEN EXIST. SIDEWALK - 5' | | REMOVE/RESTRIPE PARKING |
| | REPLACE EXIST. DRIVEWAY | | BUS ROUTE 7 BUS STOP # | | RELOCATED EXIST. FENCE |
| | REMOVE EXIST. DRIVEWAY | | BUS ROUTE 10 BUS STOP # | | TRAFFIC SIGNAL - NEW/UPGRADE |
| | DISCREPANCY IN R.O.W. | | | | |

UNIVERSITY AVENUE MOBILITY PLAN OPTION 3

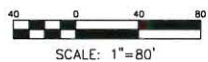
CARTEGENA AND BONILLO SHEET 7 OF SHEET 11



Elements of Mobility Plan



Darnell & Associates, Inc.
TRANSPORTATION PLANNING
& TRAFFIC ENGINEERING



LEGEND

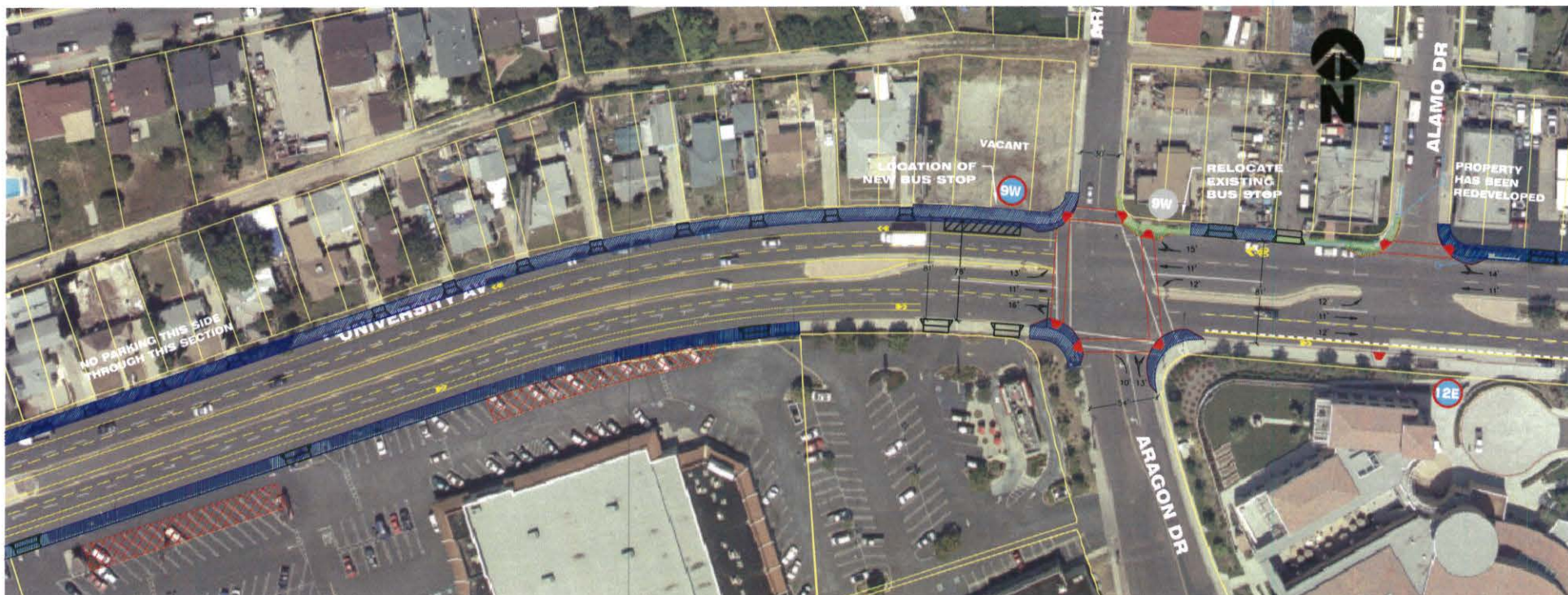
- EXIST. ADA COMPLIANT CURB RAMP
- PROPOSED CURB RAMP
- REPLACE EXIST. STREET LIGHT
- REPLACE EXIST. DRIVEWAY
- REMOVE EXIST. DRIVEWAY
- DISCREPANCY IN R.O.W.

- REPLACE SIDEWALK - 10' WIDE
- REPLACE SIDEWALK - 5' WIDE
- WIDEN EXIST. SIDEWALK - 5'
- BUS ROUTE 7 BUS STOP #
- BUS ROUTE 10 BUS STOP #

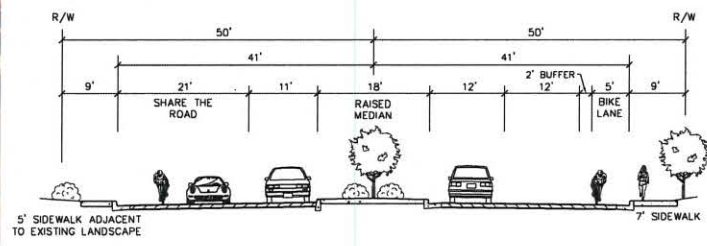
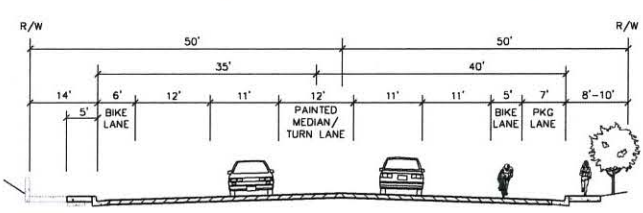
- PROPOSED BUS PAD
- PROPOSED RAISED MEDIAN
- REMOVE/RESTRIPE PARKING
- RELOCATED EXIST. FENCE
- TRAFFIC SIGNAL - NEW/UPGRADE

**UNIVERSITY AVENUE
MOBILITY PLAN
OPTION 3**

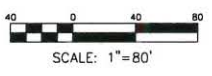
**ROLANDO BOULEVARD
SHEET 8 OF SHEET 11**



Elements of Mobility Plan



DAVID EVANS AND ASSOCIATES, INC.
Darnell & ASSOCIATES, INC.
 TRANSPORTATION PLANNING & TRAFFIC ENGINEERING



LEGEND	
	EXIST. ADA COMPLIANT CURB RAMP
	PROPOSED CURB RAMP
	REPLACE EXIST. STREET LIGHT
	REPLACE EXIST. DRIVEWAY
	REMOVE EXIST. DRIVEWAY
	DISCREPANCY IN R.O.W.
	REPLACE SIDEWALK - 10' WIDE
	REPLACE SIDEWALK - 5' WIDE
	WIDEN EXIST. SIDEWALK - 5'
	BUS ROUTE 7 BUS STOP #
	BUS ROUTE 10 BUS STOP #
	PROPOSED BUS PAD
	PROPOSED RAISED MEDIAN
	REMOVE/RESTRIPE PARKING
	RELOCATED EXIST. FENCE
	TRAFFIC SIGNAL - NEW/UPGRADE

UNIVERSITY AVENUE MOBILITY PLAN OPTION 3

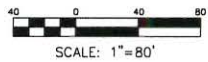
ARAGON DRIVE
 SHEET 9 OF SHEET 11



Elements of Mobility Plan



Darnell
 & ASSOCIATES, INC.
 TRANSPORTATION PLANNING
 & TRAFFIC ENGINEERING

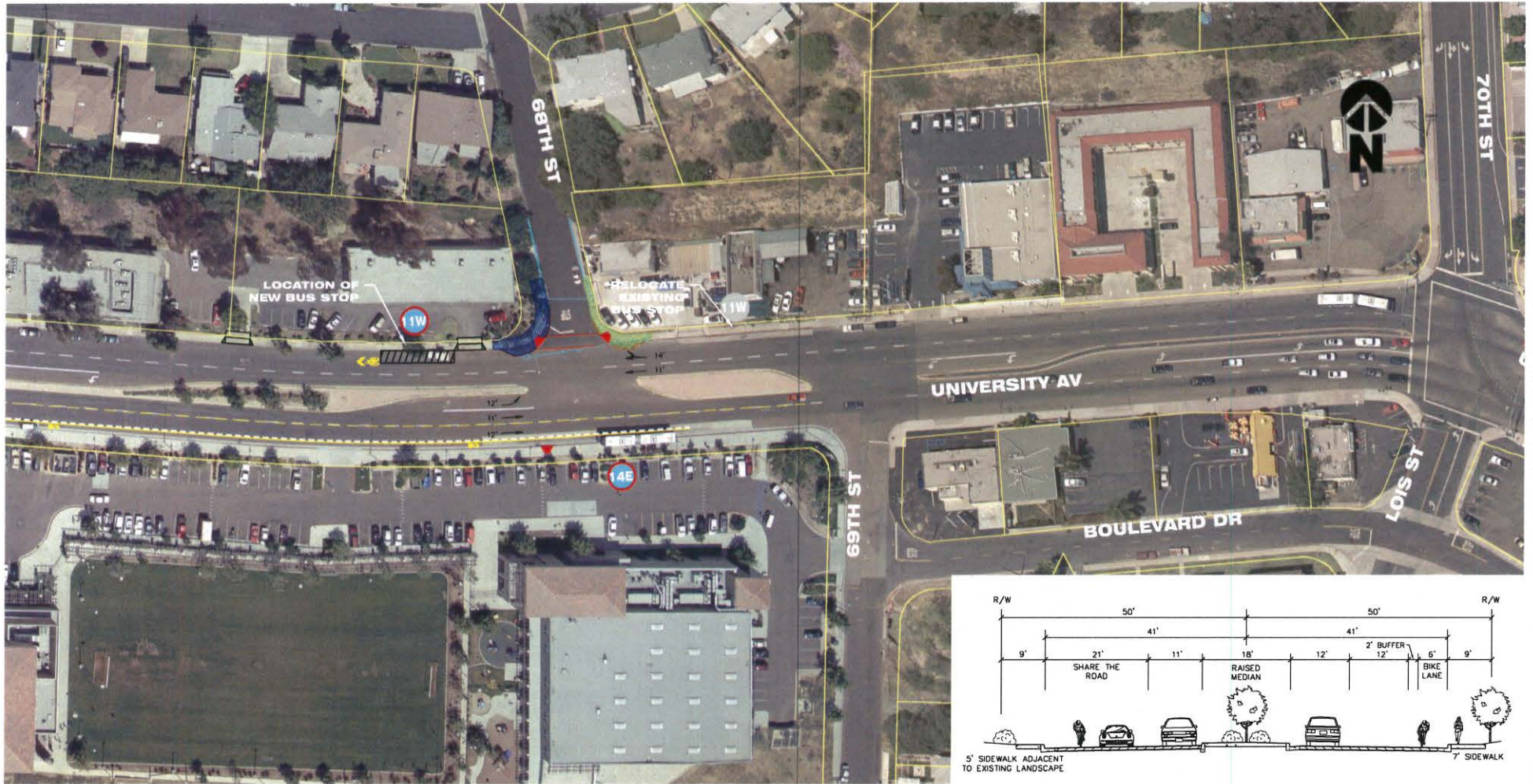


LEGEND

- | | | | | | |
|--|--------------------------------|--|-----------------------------|--|------------------------------|
| | EXIST. ADA COMPLIANT CURB RAMP | | REPLACE SIDEWALK - 10' WIDE | | PROPOSED BUS PAD |
| | PROPOSED CURB RAMP | | REPLACE SIDEWALK - 5' WIDE | | PROPOSED RAISED MEDIAN |
| | REPLACE EXIST. STREET LIGHT | | WIDEN EXIST. SIDEWALK - 5' | | REMOVE/RESTRIPE PARKING |
| | REPLACE EXIST. DRIVEWAY | | BUS ROUTE 7 BUS STOP # | | RELOCATED EXIST. FENCE |
| | REMOVE EXIST. DRIVEWAY | | BUS ROUTE 10 BUS STOP # | | TRAFFIC SIGNAL - NEW/UPGRADE |
| | DISCREPANCY IN R.O.W. | | | | |

**UNIVERSITY AVENUE
 MOBILITY PLAN
 OPTION 3**

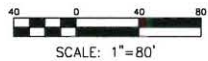
JOAN KROC CENTER
 SHEET 10 OF SHEET 11



Elements of Mobility Plan



Darnell & Associates, Inc.
TRANSPORTATION PLANNING
& TRAFFIC ENGINEERING



LEGEND

- | | | | | | |
|--|--------------------------------|--|-----------------------------|--|------------------------------|
| | EXIST. ADA COMPLIANT CURB RAMP | | REPLACE SIDEWALK - 10' WIDE | | PROPOSED BUS PAD |
| | PROPOSED CURB RAMP | | REPLACE SIDEWALK - 5' WIDE | | PROPOSED RAISED MEDIAN |
| | REPLACE EXIST. STREET LIGHT | | WIDEN EXIST. SIDEWALK - 5' | | REMOVE/RESTRIPE PARKING |
| | REPLACE EXIST. DRIVEWAY | | BUS ROUTE 7 BUS STOP # | | RELOCATED EXIST. FENCE |
| | REMOVE EXIST. DRIVEWAY | | BUS ROUTE 10 BUS STOP # | | TRAFFIC SIGNAL - NEW/UPGRADE |
| | DISCREPANCY IN R.O.W. | | | | |

**UNIVERSITY AVENUE
MOBILITY PLAN
OPTION 3**

68TH STREET
SHEET 11 OF SHEET 11