



**PROJECT WORKING GROUP
ROSECRANS CORRIDOR
MOBILITY STUDY**

AUGUST 17, 2009

Agenda



- Call to Order
 - Approval of Meeting Minutes
 - Purpose & Mission Statement of PWG
- Public Comment
- Results of Public Workshop
- City Presentation of Planned Improvements to Rosecrans/Midway
- Concepts for Rosecrans & Small Group Discussion
- Upcoming Events & Announcements
- Next Meeting

Mission Statement



The mission of the Rosecrans Corridor Mobility Study Project Working Group is to provide recommendations to the City of San Diego about potential community sensitive solutions to improve *vehicular, transit, pedestrian, and bicycle* mobility in the Rosecrans Corridor study area.

The Working Group will serve as a forum for collaboration, the discussion of issues and exchange of ideas between City, military and all affected communities toward improving mobility and promoting urban beautification.

Purpose of PWG



The PWG is comprised of residents and business owners from the Rosecrans Corridor communities of Old Town, North Bay and Peninsula. All members were appointed or nominated to serve as representatives of the PWG through their involvement in the community or in community based organizations.

Members are responsible for disseminating information about the project to the community by providing monthly updates to their respective organizations and distribution of event information.

The PWG is an advisory body. The purpose of this group is to provide guidance on key issues to the project technical team and City staff.



Project Progress



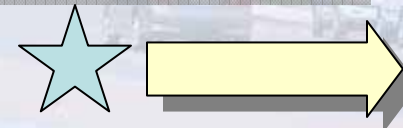
Existing Conditions Analysis

Future Conditions Analysis

Development of Alternatives

1st Workshop

Walk Audits







PUBLIC COMMENT

(Topics not on the Agenda)





RESULTS OF 1ST PUBLIC WORKSHOP

Workshop Summary



- July 2nd
- Point Loma Nazarene
- 45 Attendees Signed In
- 2 hours:
 - Hand held survey
 - Post-It Note Issues/Ideas
 - Breakout Groups



Most People at the Workshop...



- ... have lived in the area more than 10 years
- ... are concerned about all the areas in the study corridor
- ... are most interested in improving traffic flow in Areas 1, 2 & 3
- ... are split on improving flow and slowing down speeds in Area 4

How do you get around?



- 63% drive
- 6% bike
- 6% walk
- 3% transit
- 22% - combination of modes

Many people noted that if conditions were more conducive to modes other than auto (safer walking/biking environment, improved transit service, etc) they may shift their mode of travel.

Ideas/Concerns



- Concerns
 - Bicycle/Pedestrian Safety
 - Lack of bicycle lanes
 - Midway/Sports Arena intersection
 - Poor signage to I-5
 - Side Street Access
 - Illegal u-turns midblock in Area 2
 - Poor visibility/line of sight
 - Emergency Access
 - Too High of Density / Too Much Traffic
 - Accidents
 - Closing/Narrowing Harbor Drive & Pork Chop Islands
 - Ugly, wide street
 - Lack of Transit Facilities

Ideas/Concerns



- Ideas

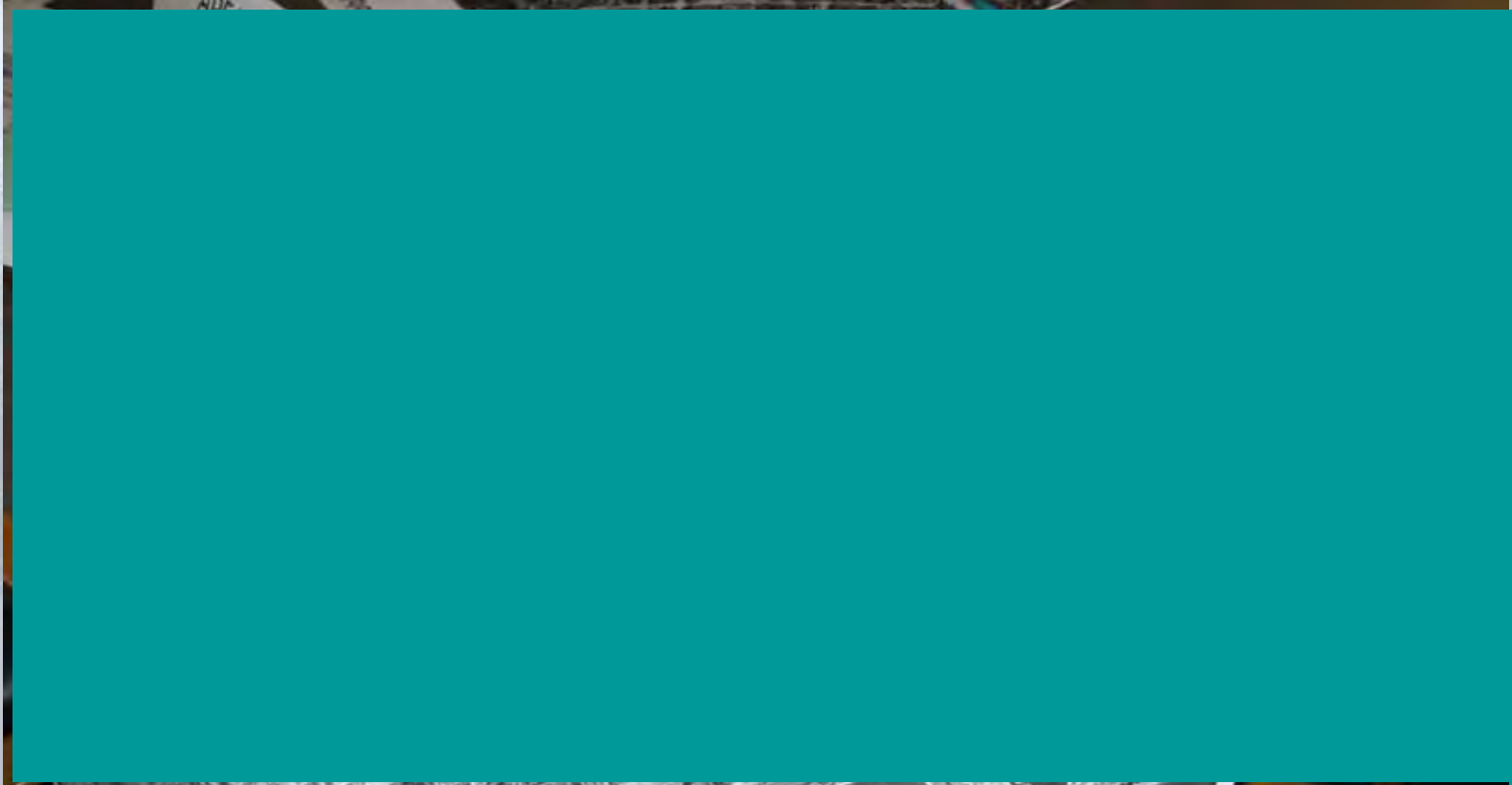
- Synchronized Traffic Signals
- Reduce Speed Limits
- Route Traffic Away from Rosecrans
 - Barnett
 - Harbor Drive
 - Nimitz (connection to I-8)
 - Lytton (connection to I-5)
- Remove medians
- Bus in Navy & Rock Church Patrons
- Stop Approving Projects (Liberty Station & Area 4)
- Left Turn Arrows at Talbot & at Canon
- Install Bike Lanes (east side – take out parkway)
- Get Buses out of Travel Lane (dedicated lane or bike lane)
- Increase Enforcement

Ideas/Concerns



- Ideas (continued)
 - Install Traffic Calming (Area 4) or Traffic Metering
 - Carpool Incentives for Residents & Businesses
 - Add more trees (Rosecrans, Sport Arena, Midway)
 - Toll Road south of Talbot
 - Mass Transit Incentives
 - Improve Transit Stops
 - Bus Shelters with “Next Bus” Information & Route Information
 - Improve Pedestrian Environment
 - Wider Sidewalks
 - Bulbouts
 - Marked Crosswalks
 - Shorter Distances to Cross

Small Group Mapping



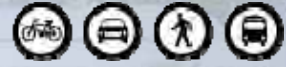
COMMUNITY WALK AUDITS



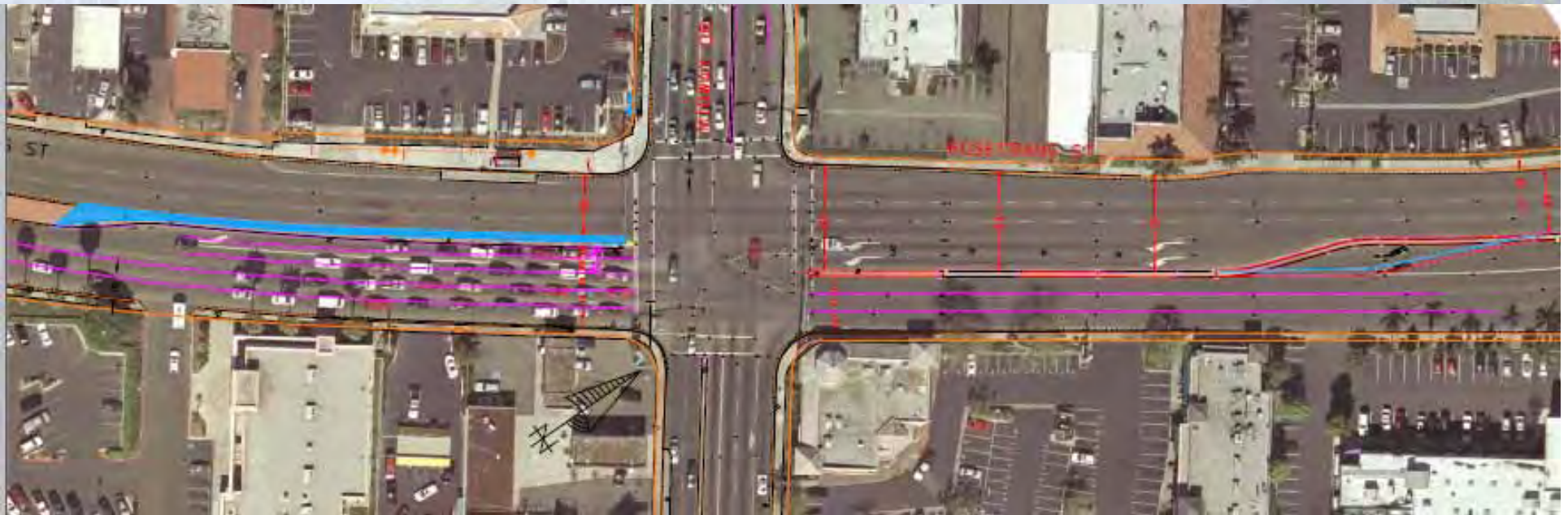


PLANNED IMPROVEMENTS – MIDWAY & ROSECRANS

Left Turn Modification



Left Turn Modification



CITY OF SAN DIEGO PLANS FOR THE CONSTRUCTION OF ROSECRANS STREET AND MIDWAY DRIVE

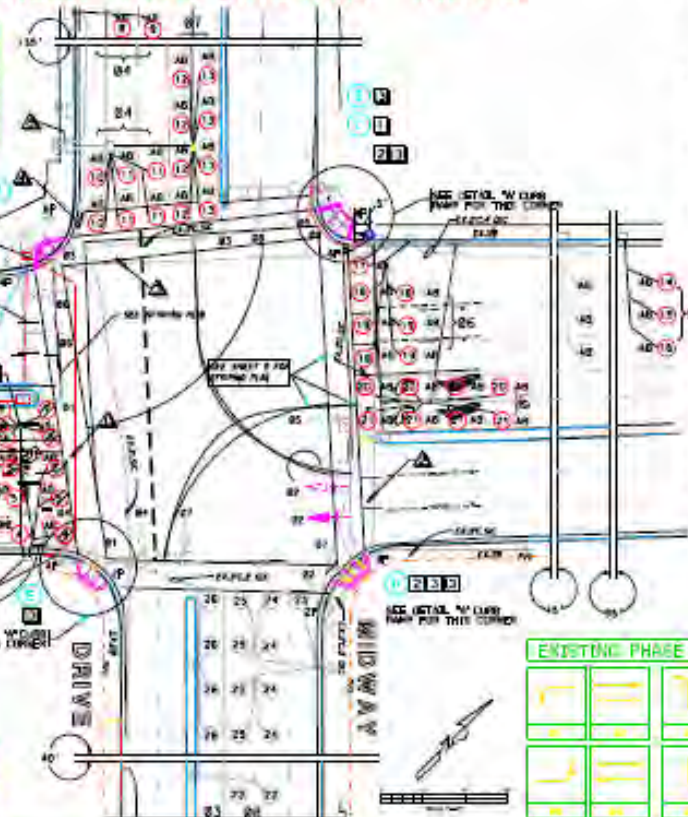
WORK TO BE DONE & GENERAL NOTES:
SEE OVER SHEET I
CONSTRUCTION NOTES

POLE SCHEDULE	
NO.	TYPE
1	10'-0" TO 12'-0" TO ROAD
2	10'-0" TO 12'-0" TO ROAD
3	10'-0" TO 12'-0" TO ROAD
4	10'-0" TO 12'-0" TO ROAD
5	10'-0" TO 12'-0" TO ROAD
6	10'-0" TO 12'-0" TO ROAD
7	10'-0" TO 12'-0" TO ROAD
8	10'-0" TO 12'-0" TO ROAD
9	10'-0" TO 12'-0" TO ROAD
10	10'-0" TO 12'-0" TO ROAD
11	10'-0" TO 12'-0" TO ROAD
12	10'-0" TO 12'-0" TO ROAD
13	10'-0" TO 12'-0" TO ROAD
14	10'-0" TO 12'-0" TO ROAD
15	10'-0" TO 12'-0" TO ROAD
16	10'-0" TO 12'-0" TO ROAD
17	10'-0" TO 12'-0" TO ROAD
18	10'-0" TO 12'-0" TO ROAD
19	10'-0" TO 12'-0" TO ROAD
20	10'-0" TO 12'-0" TO ROAD
21	10'-0" TO 12'-0" TO ROAD
22	10'-0" TO 12'-0" TO ROAD
23	10'-0" TO 12'-0" TO ROAD
24	10'-0" TO 12'-0" TO ROAD
25	10'-0" TO 12'-0" TO ROAD
26	10'-0" TO 12'-0" TO ROAD
27	10'-0" TO 12'-0" TO ROAD
28	10'-0" TO 12'-0" TO ROAD
29	10'-0" TO 12'-0" TO ROAD
30	10'-0" TO 12'-0" TO ROAD
31	10'-0" TO 12'-0" TO ROAD
32	10'-0" TO 12'-0" TO ROAD
33	10'-0" TO 12'-0" TO ROAD
34	10'-0" TO 12'-0" TO ROAD
35	10'-0" TO 12'-0" TO ROAD
36	10'-0" TO 12'-0" TO ROAD
37	10'-0" TO 12'-0" TO ROAD
38	10'-0" TO 12'-0" TO ROAD
39	10'-0" TO 12'-0" TO ROAD
40	10'-0" TO 12'-0" TO ROAD
41	10'-0" TO 12'-0" TO ROAD
42	10'-0" TO 12'-0" TO ROAD
43	10'-0" TO 12'-0" TO ROAD
44	10'-0" TO 12'-0" TO ROAD
45	10'-0" TO 12'-0" TO ROAD
46	10'-0" TO 12'-0" TO ROAD
47	10'-0" TO 12'-0" TO ROAD
48	10'-0" TO 12'-0" TO ROAD
49	10'-0" TO 12'-0" TO ROAD
50	10'-0" TO 12'-0" TO ROAD
51	10'-0" TO 12'-0" TO ROAD
52	10'-0" TO 12'-0" TO ROAD
53	10'-0" TO 12'-0" TO ROAD
54	10'-0" TO 12'-0" TO ROAD
55	10'-0" TO 12'-0" TO ROAD
56	10'-0" TO 12'-0" TO ROAD
57	10'-0" TO 12'-0" TO ROAD
58	10'-0" TO 12'-0" TO ROAD
59	10'-0" TO 12'-0" TO ROAD
60	10'-0" TO 12'-0" TO ROAD
61	10'-0" TO 12'-0" TO ROAD
62	10'-0" TO 12'-0" TO ROAD
63	10'-0" TO 12'-0" TO ROAD
64	10'-0" TO 12'-0" TO ROAD
65	10'-0" TO 12'-0" TO ROAD
66	10'-0" TO 12'-0" TO ROAD
67	10'-0" TO 12'-0" TO ROAD
68	10'-0" TO 12'-0" TO ROAD
69	10'-0" TO 12'-0" TO ROAD
70	10'-0" TO 12'-0" TO ROAD
71	10'-0" TO 12'-0" TO ROAD
72	10'-0" TO 12'-0" TO ROAD
73	10'-0" TO 12'-0" TO ROAD
74	10'-0" TO 12'-0" TO ROAD
75	10'-0" TO 12'-0" TO ROAD
76	10'-0" TO 12'-0" TO ROAD
77	10'-0" TO 12'-0" TO ROAD
78	10'-0" TO 12'-0" TO ROAD
79	10'-0" TO 12'-0" TO ROAD
80	10'-0" TO 12'-0" TO ROAD
81	10'-0" TO 12'-0" TO ROAD
82	10'-0" TO 12'-0" TO ROAD
83	10'-0" TO 12'-0" TO ROAD
84	10'-0" TO 12'-0" TO ROAD
85	10'-0" TO 12'-0" TO ROAD
86	10'-0" TO 12'-0" TO ROAD
87	10'-0" TO 12'-0" TO ROAD
88	10'-0" TO 12'-0" TO ROAD
89	10'-0" TO 12'-0" TO ROAD
90	10'-0" TO 12'-0" TO ROAD
91	10'-0" TO 12'-0" TO ROAD
92	10'-0" TO 12'-0" TO ROAD
93	10'-0" TO 12'-0" TO ROAD
94	10'-0" TO 12'-0" TO ROAD
95	10'-0" TO 12'-0" TO ROAD
96	10'-0" TO 12'-0" TO ROAD
97	10'-0" TO 12'-0" TO ROAD
98	10'-0" TO 12'-0" TO ROAD
99	10'-0" TO 12'-0" TO ROAD
100	10'-0" TO 12'-0" TO ROAD

DETECTOR ASSIGNMENT	
NO.	DETECTOR TYPE
1	10'-0" TO 12'-0" TO ROAD
2	10'-0" TO 12'-0" TO ROAD
3	10'-0" TO 12'-0" TO ROAD
4	10'-0" TO 12'-0" TO ROAD
5	10'-0" TO 12'-0" TO ROAD
6	10'-0" TO 12'-0" TO ROAD
7	10'-0" TO 12'-0" TO ROAD
8	10'-0" TO 12'-0" TO ROAD
9	10'-0" TO 12'-0" TO ROAD
10	10'-0" TO 12'-0" TO ROAD
11	10'-0" TO 12'-0" TO ROAD
12	10'-0" TO 12'-0" TO ROAD
13	10'-0" TO 12'-0" TO ROAD
14	10'-0" TO 12'-0" TO ROAD
15	10'-0" TO 12'-0" TO ROAD
16	10'-0" TO 12'-0" TO ROAD
17	10'-0" TO 12'-0" TO ROAD
18	10'-0" TO 12'-0" TO ROAD
19	10'-0" TO 12'-0" TO ROAD
20	10'-0" TO 12'-0" TO ROAD
21	10'-0" TO 12'-0" TO ROAD
22	10'-0" TO 12'-0" TO ROAD
23	10'-0" TO 12'-0" TO ROAD
24	10'-0" TO 12'-0" TO ROAD
25	10'-0" TO 12'-0" TO ROAD
26	10'-0" TO 12'-0" TO ROAD
27	10'-0" TO 12'-0" TO ROAD
28	10'-0" TO 12'-0" TO ROAD
29	10'-0" TO 12'-0" TO ROAD
30	10'-0" TO 12'-0" TO ROAD
31	10'-0" TO 12'-0" TO ROAD
32	10'-0" TO 12'-0" TO ROAD
33	10'-0" TO 12'-0" TO ROAD
34	10'-0" TO 12'-0" TO ROAD
35	10'-0" TO 12'-0" TO ROAD
36	10'-0" TO 12'-0" TO ROAD
37	10'-0" TO 12'-0" TO ROAD
38	10'-0" TO 12'-0" TO ROAD
39	10'-0" TO 12'-0" TO ROAD
40	10'-0" TO 12'-0" TO ROAD
41	10'-0" TO 12'-0" TO ROAD
42	10'-0" TO 12'-0" TO ROAD
43	10'-0" TO 12'-0" TO ROAD
44	10'-0" TO 12'-0" TO ROAD
45	10'-0" TO 12'-0" TO ROAD
46	10'-0" TO 12'-0" TO ROAD
47	10'-0" TO 12'-0" TO ROAD
48	10'-0" TO 12'-0" TO ROAD
49	10'-0" TO 12'-0" TO ROAD
50	10'-0" TO 12'-0" TO ROAD
51	10'-0" TO 12'-0" TO ROAD
52	10'-0" TO 12'-0" TO ROAD
53	10'-0" TO 12'-0" TO ROAD
54	10'-0" TO 12'-0" TO ROAD
55	10'-0" TO 12'-0" TO ROAD
56	10'-0" TO 12'-0" TO ROAD
57	10'-0" TO 12'-0" TO ROAD
58	10'-0" TO 12'-0" TO ROAD
59	10'-0" TO 12'-0" TO ROAD
60	10'-0" TO 12'-0" TO ROAD
61	10'-0" TO 12'-0" TO ROAD
62	10'-0" TO 12'-0" TO ROAD
63	10'-0" TO 12'-0" TO ROAD
64	10'-0" TO 12'-0" TO ROAD
65	10'-0" TO 12'-0" TO ROAD
66	10'-0" TO 12'-0" TO ROAD
67	10'-0" TO 12'-0" TO ROAD
68	10'-0" TO 12'-0" TO ROAD
69	10'-0" TO 12'-0" TO ROAD
70	10'-0" TO 12'-0" TO ROAD
71	10'-0" TO 12'-0" TO ROAD
72	10'-0" TO 12'-0" TO ROAD
73	10'-0" TO 12'-0" TO ROAD
74	10'-0" TO 12'-0" TO ROAD
75	10'-0" TO 12'-0" TO ROAD
76	10'-0" TO 12'-0" TO ROAD
77	10'-0" TO 12'-0" TO ROAD
78	10'-0" TO 12'-0" TO ROAD
79	10'-0" TO 12'-0" TO ROAD
80	10'-0" TO 12'-0" TO ROAD
81	10'-0" TO 12'-0" TO ROAD
82	10'-0" TO 12'-0" TO ROAD
83	10'-0" TO 12'-0" TO ROAD
84	10'-0" TO 12'-0" TO ROAD
85	10'-0" TO 12'-0" TO ROAD
86	10'-0" TO 12'-0" TO ROAD
87	10'-0" TO 12'-0" TO ROAD
88	10'-0" TO 12'-0" TO ROAD
89	10'-0" TO 12'-0" TO ROAD
90	10'-0" TO 12'-0" TO ROAD
91	10'-0" TO 12'-0" TO ROAD
92	10'-0" TO 12'-0" TO ROAD
93	10'-0" TO 12'-0" TO ROAD
94	10'-0" TO 12'-0" TO ROAD
95	10'-0" TO 12'-0" TO ROAD
96	10'-0" TO 12'-0" TO ROAD
97	10'-0" TO 12'-0" TO ROAD
98	10'-0" TO 12'-0" TO ROAD
99	10'-0" TO 12'-0" TO ROAD
100	10'-0" TO 12'-0" TO ROAD

LOOP DETECTOR WITH
CONTRACTOR IS RESPONSIBLE TO USE EXTREME CARE
AND TAKE ALL NECESSARY PRECAUTIONS TO
ENSURE PROPER LOOP DETECTOR.

CONDUCTOR TABLE	
NO.	TYPE
1	10'-0" TO 12'-0" TO ROAD
2	10'-0" TO 12'-0" TO ROAD
3	10'-0" TO 12'-0" TO ROAD
4	10'-0" TO 12'-0" TO ROAD
5	10'-0" TO 12'-0" TO ROAD
6	10'-0" TO 12'-0" TO ROAD
7	10'-0" TO 12'-0" TO ROAD
8	10'-0" TO 12'-0" TO ROAD
9	10'-0" TO 12'-0" TO ROAD
10	10'-0" TO 12'-0" TO ROAD
11	10'-0" TO 12'-0" TO ROAD
12	10'-0" TO 12'-0" TO ROAD
13	10'-0" TO 12'-0" TO ROAD
14	10'-0" TO 12'-0" TO ROAD
15	10'-0" TO 12'-0" TO ROAD
16	10'-0" TO 12'-0" TO ROAD
17	10'-0" TO 12'-0" TO ROAD
18	10'-0" TO 12'-0" TO ROAD
19	10'-0" TO 12'-0" TO ROAD
20	10'-0" TO 12'-0" TO ROAD
21	10'-0" TO 12'-0" TO ROAD
22	10'-0" TO 12'-0" TO ROAD
23	10'-0" TO 12'-0" TO ROAD
24	10'-0" TO 12'-0" TO ROAD
25	10'-0" TO 12'-0" TO ROAD
26	10'-0" TO 12'-0" TO ROAD
27	10'-0" TO 12'-0" TO ROAD
28	10'-0" TO 12'-0" TO ROAD
29	10'-0" TO 12'-0" TO ROAD
30	10'-0" TO 12'-0" TO ROAD
31	10'-0" TO 12'-0" TO ROAD
32	10'-0" TO 12'-0" TO ROAD
33	10'-0" TO 12'-0" TO ROAD
34	10'-0" TO 12'-0" TO ROAD
35	10'-0" TO 12'-0" TO ROAD
36	10'-0" TO 12'-0" TO ROAD
37	10'-0" TO 12'-0" TO ROAD
38	10'-0" TO 12'-0" TO ROAD
39	10'-0" TO 12'-0" TO ROAD
40	10'-0" TO 12'-0" TO ROAD
41	10'-0" TO 12'-0" TO ROAD
42	10'-0" TO 12'-0" TO ROAD
43	10'-0" TO 12'-0" TO ROAD
44	10'-0" TO 12'-0" TO ROAD
45	10'-0" TO 12'-0" TO ROAD
46	10'-0" TO 12'-0" TO ROAD
47	10'-0" TO 12'-0" TO ROAD
48	10'-0" TO 12'-0" TO ROAD
49	10'-0" TO 12'-0" TO ROAD
50	10'-0" TO 12'-0" TO ROAD
51	10'-0" TO 12'-0" TO ROAD
52	10'-0" TO 12'-0" TO ROAD
53	10'-0" TO 12'-0" TO ROAD
54	10'-0" TO 12'-0" TO ROAD
55	10'-0" TO 12'-0" TO ROAD
56	10'-0" TO 12'-0" TO ROAD
57	10'-0" TO 12'-0" TO ROAD
58	10'-0" TO 12'-0" TO ROAD
59	10'-0" TO 12'-0" TO ROAD
60	10'-0" TO 12'-0" TO ROAD
61	10'-0" TO 12'-0" TO ROAD
62	10'-0" TO 12'-0" TO ROAD
63	10'-0" TO 12'-0" TO ROAD
64	10'-0" TO 12'-0" TO ROAD
65	10'-0" TO 12'-0" TO ROAD
66	10'-0" TO 12'-0" TO ROAD
67	10'-0" TO 12'-0" TO ROAD
68	10'-0" TO 12'-0" TO ROAD
69	10'-0" TO 12'-0" TO ROAD
70	10'-0" TO 12'-0" TO ROAD
71	10'-0" TO 12'-0" TO ROAD
72	10'-0" TO 12'-0" TO ROAD
73	10'-0" TO 12'-0" TO ROAD
74	10'-0" TO 12'-0" TO ROAD
75	10'-0" TO 12'-0" TO ROAD
76	10'-0" TO 12'-0" TO ROAD
77	10'-0" TO 12'-0" TO ROAD
78	10'-0" TO 12'-0" TO ROAD
79	10'-0" TO 12'-0" TO ROAD
80	10'-0" TO 12'-0" TO ROAD
81	10'-0" TO 12'-0" TO ROAD
82	10'-0" TO 12'-0" TO ROAD
83	10'-0" TO 12'-0" TO ROAD
84	10'-0" TO 12'-0" TO ROAD
85	10'-0" TO 12'-0" TO ROAD
86	10'-0" TO 12'-0" TO ROAD
87	10'-0" TO 12'-0" TO ROAD
88	10'-0" TO 12'-0" TO ROAD
89	10'-0" TO 12'-0" TO ROAD
90	10'-0" TO 12'-0" TO ROAD
91	10'-0" TO 12'-0" TO ROAD
92	10'-0" TO 12'-0" TO ROAD
93	10'-0" TO 12'-0" TO ROAD
94	10'-0" TO 12'-0" TO ROAD
95	10'-0" TO 12'-0" TO ROAD
96	10'-0" TO 12'-0" TO ROAD
97	10'-0" TO 12'-0" TO ROAD
98	10'-0" TO 12'-0" TO ROAD
99	10'-0" TO 12'-0" TO ROAD
100	10'-0" TO 12'-0" TO ROAD



- 1 REMOVE AND SALVAGE EXISTING POLES AND ELECTRICAL EQUIPMENT. PER CITY STANDARD SPECIAL PROVISIONS SECTION 103-7. CUT DOWN FOUNDATION 18" BELOW GRADE AND REPAIR SURFACE TO MATCH EXISTING. TRENCH AND INSTALL 3" CONDUIT WITH CONDUCTORS TO NEW POLE. FURNISH AND INSTALL NO. 8 PULLBOX IF NECESSARY. (SEE POLE AND CONDUCTOR SCHEDULES).
- 2 FURNISH AND INSTALL NEW POLES, WAST ARMS, SIGNAL HEADS, & OTHER EQUIPMENT FURNISH/FABRICATE NEW BRACKETING OR MOUNTING HARDWARE. INSTALL NEW CABLE/CONDUCTORS. PULL TO CONTROLLER AND LAND TO ASSIGNED TERMINALS. FURNISH & INSTALL NO PULLBOX ADJACENT TO EACH POLE. TRENCH AND INSTALL 3" CONDUIT WITH CONDUCTORS FROM POLE TO PULLBOX. (SEE POLE AND CONDUCTOR SCHEDULES).
- 3 TRANSFER REUSABLE ELECTRICAL EQUIPMENT AND SIGNS FROM THE FOLLOWING POLES BELOW. PROPERLY SPLICE REMAINING CONDUCTORS. PROVIDE/FABRICATE MOUNTING HARDWARE. PER CITY STANDARD SPECIAL PROVISIONS SECT. 103-7. -FROM POLE TO TRANSFER ONE 1/2" SECTION HEADLAMP BRACKET TO NEW LOCATION AS SHOWN.
- 4 PROVIDE AND INSTALL NEW LOOP DETECTOR, PLC, AND OTHER EQUIPMENT NECESSARY AS SHOWN. FOR THE PROPER OPERATION OF THIS PHASE. PULL NEW OLC TO CONTROLLER.
- 5 CONSTRUCT CURB RAMP AS FOLLOWS:
-FOR NEW OLC USE CONDUIT-TYPE C OVER 300X300 DETAIL 'A'.
-FOR OLC CONNECTIVE A NEW 300 - DETAIL 'B'.
- 6 TRENCH AND INSTALL 2" CONDUIT WITH NEW CONDUCTOR.
- 7 INSTALL TYPE A HANDLE.
- 8 INSTALL 5 PAIR #22 INTERCONNECT CABLE (#22) IN EXIST. CONDUIT.
- 9 INSTALL NO PULLBOX.
- 10 REMOVE AND CONSTRUCT 4" PDC SCREENS.
- 11 REMOVE EXISTING PULLBOX (#9) AND CONSTRUCT NEW PB AS SHOWN.
- 12 REMOVE A HOLOCATE EXISTING PULLBOX (#9) BY SOGC.
- 13 REMOVE EXIST. BUTTONS FURNISH & INSTALL AUDIBLE SIGNALS & PUSH BUTTONS.
- 14 INSTALL CONDUIT INTO EXISTING PULLBOX.
- 15 ABANDON EXISTING.



LEGENDS

PROPOSED IMPROVEMENTS:	STD. OMC.	SYMBOL
NEW EQUIPMENT	AS SHOWN	(Symbol: Pink arrow)
REMOVED EQUIPMENT	AS SHOWN	(Symbol: Red arrow)
REMOVED AND SALVAGED EQUIPMENT	AS SHOWN	(Symbol: Dashed red arrow)
NO 5-0 PULLBOX	CALTRANS 05-0	(Symbol: Square)
2" - 3" CONDUIT	0-25, 025-06, 07 & 08	(Symbol: Line)
TYPE A/C-CURB RAMP	020-12/13A	(Symbol: Square)
EXISTING CONDITIONS IN LIGHTER HALF-TIME		(Symbol: Lighter line)
PROPOSED CONDITIONS IN DARKER HALF-TIME		(Symbol: Darker line)



 CITY OF SAN DIEGO OFFICE OF THE PUBLIC WORKS DIRECTOR	PLANS FOR THE CONSTRUCTION OF: TRAFFIC SIGNALS SYSTEM MODIFICATIONS AT ROSECRANS STREET AND MIDWAY	
	CITY OF SAN DIEGO, CALIFORNIA (SEAL)	# 522091
CONTRACTOR MUST KEEP THE WORK AREA OPEN AT ALL TIMES TO TRAFFIC FROM THE ADJACENT SIDE OF THE STREET.	ALL WORK SHALL BE DONE IN ACCORDANCE WITH THE CITY OF SAN DIEGO STANDARD SPECIFICATIONS.	ALL WORK SHALL BE DONE IN ACCORDANCE WITH THE CITY OF SAN DIEGO STANDARD SPECIFICATIONS.
PROJECT NO. 1480-02-032	SHEET NO. 1480-02-032	34808-4-0

CITY OF SAN DIEGO PLANS FOR THE CONSTRUCTION OF ROSECRANS STREET AND MIDWAY DRIVE

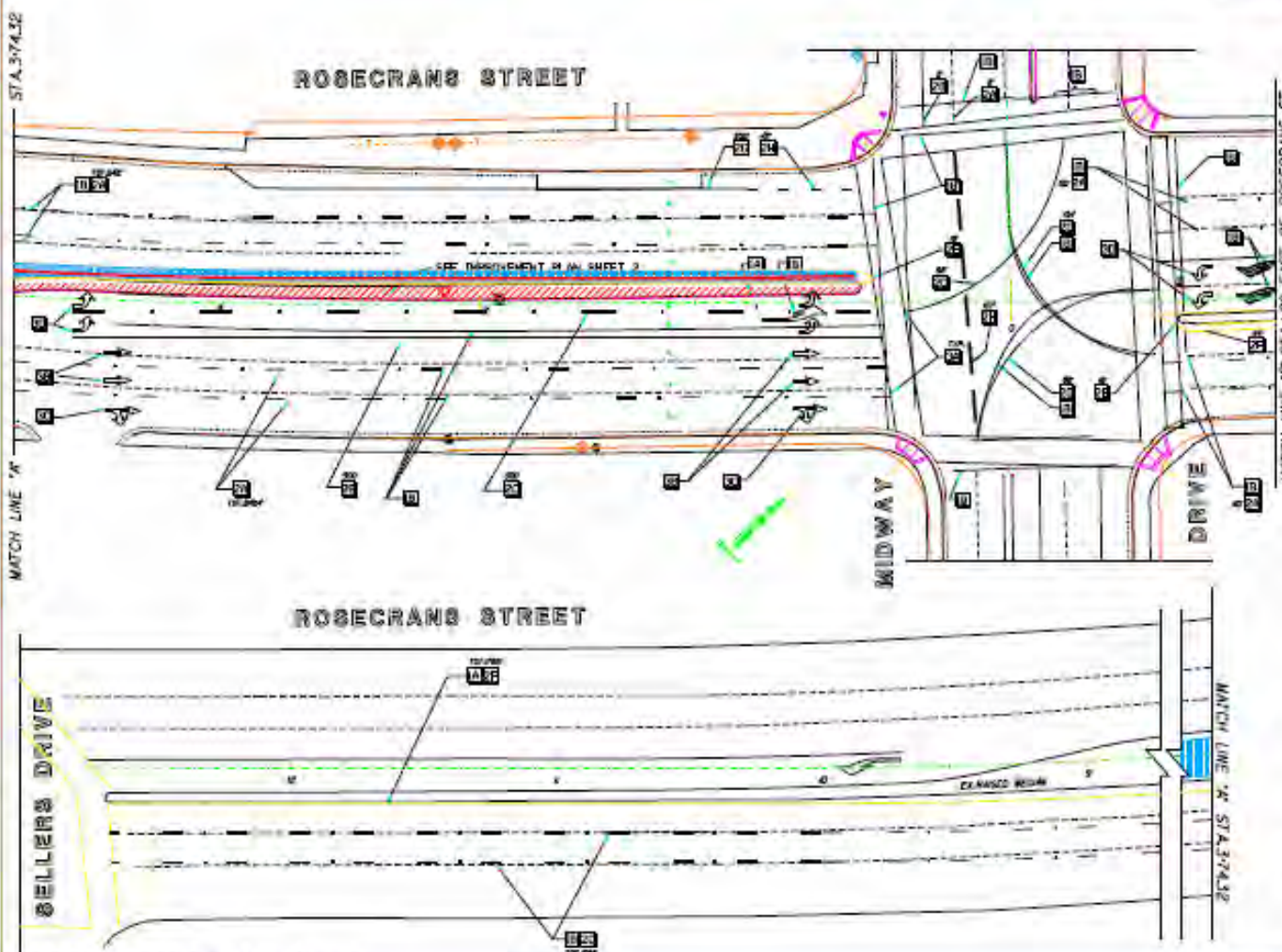
WORK SHALL BE DONE PER THE NOTES & REFERENCES:

SEE COVER SHEET 1

TRAFFIC STRIPING, PAVEMENT MARKINGS & SIGNS

SEE COVER SHEET 1

CONSTRUCTION NOTES:



- 1 REMOVE EXISTING STRIPING, BY GRINDING METHOD APPROVED BY CITY RESIDENT ENGINEER.
 - 1A. YELLOW PAINT, APPROXIMATE TOTAL LENGTH OF 400'. NO ALL CONFLICTING STRIPING & LEGEND WITHIN THE INTERSECTION AND CROSSWALKS.
 - 2 PAINT NEW STRIPING PER CALTRANS STANDARD PLAN AS SHOWN:
 - 2A. 2'-0" WHITE LANE LINE PER STATE STANDARD PLAN ASD, DETAIL 02, AS SHOWN.
 - 2B. 8" SOLID WHITE PER STATE STANDARD PLAN ASD, DETAIL 02, AS SHOWN.
 - 2C. 8" WHITE STRIPE PER STATE STANDARD PLAN ASD, DETAIL 02, AS SHOWN.
 - 2D. SOLID 4-INCH TURN ARCH PER STATE STANDARD PLAN ASD, DETAIL 03A, AS SHOWN.
 - 2E. DOUBLE YELLOW (MEDIAN NOSE) PER STATE STANDARD PLAN ASD, DETAIL 22, AS SHOWN.
 - 2F. 4-INCH YELLOW LEFT EDGE LINE PER STATE STANDARD PLAN ASD, DETAIL 25, AS SHOWN.
 - 2G. 8-INCH SOLID WHITE PER STATE STANDARD PLAN ASD, DETAIL 38A, AS SHOWN.
 - 2H. LANE LINE EXTENSION PER STATE STANDARD PLAN ASD, DETAIL 02A, AS SHOWN.
 - 3 APPLY NEW THERMOPLASTIC PAVEMENT LEGENDS:
 - 3A. 3'-0" WIDE WHITE X-WALK PER STATE STANDARD PLAN ASD, (TOTAL LENGTH = 660').
 - 3B. 4-TYPE 1-D ARROW PER STATE STANDARD PLAN ASD, 4.
 - 3C. 2-TYPE V9 - (W) ARROW PER STATE STANDARD PLAN ASD, 4.
 - 3D. 6-TYPE V - (L) ARROW PER STATE STANDARD PLAN ASD, 4.
 - 3E. REPAINT LIMIT LINE PER STATE STANDARD PLAN ASD, 4.
- MATCH LINE TO STATION EAST OF ROSECRANS ST. SEE SHEET 4
- MATCH LINE TO STATION WEST OF ROSECRANS ST. SEE SHEET 3

SPECIFICATION NO.
CITY CONTRACT, CIP No. 11-296.2

PLANS FOR THE CONSTRUCTION OF:
STRIPING PLAN
ROSECRANS STREET AND MIDWAY DRIVE
ROSECRANS ST. AT, BELLERS DR. & MIDWAY DR.

CITY OF SAN DIEGO, CALIFORNIA
Public Works & Transportation Services
CIVIL & ENVIRONMENTAL DIVISION



CONTRACTOR SHALL VERIFY THE HORIZONAL ALIGNMENT AT ALL TIMES TO INSURE THE PROPER POSITIONING OF THE STRIPING.	APPROVED:	DATE:	APPROVED:	DATE:
	DESIGNED:	DRAWN:	CHECKED:	PROJECT NO.:
ADDRESSING SERVICE UNIT (619) 494-5137			PROJECT NO. 34508-5-0	

SEE RESURFS PLAN OR ORIGINAL SCALE 1/8"=1'-0"

34508-5-0 ROSECRANS STREET AND MIDWAY DRIVE

CITY OF SAN DIEGO
 PLANS FOR THE CONSTRUCTION OF
ROSECRANS STREET AND MIDWAY DRIVE

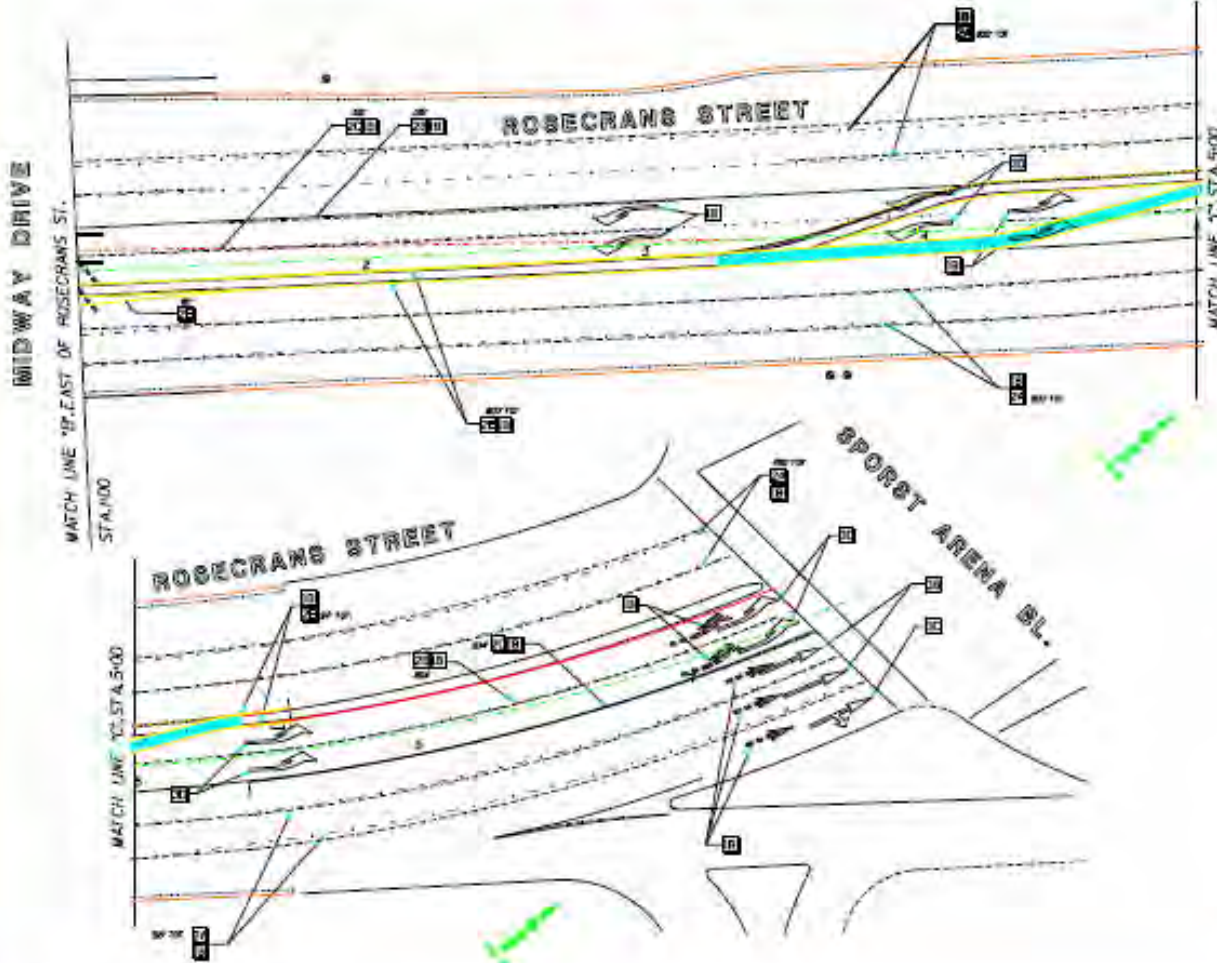
WORK TO BE DONE GENERAL NOTES & LEGENDS

SEE COVER SHEET 1

SEE COVER SHEET 1

CONSTRUCTION NOTES

- 1 REMOVE EXISTING STRIPING, BY GRINDING METHOD APPROVED BY CITY RESIDENT ENGINEER, IN ALL CONFLICTING STRIPING & LEGEND WITHIN THE INTERSECTION AND CROSSWALKS.
- 2 PAINT NEW STRIPING PER CALTRANS STANDARD PLAN AS SHOWN:
 2A. 8" WHITE LANE LINE PER STATE STANDARD PLAN ADD. DETAIL 22 AS SHOWN. (TOTAL = 2577L)
 2B. 8" SOLID WHITE PER STATE STANDARD PLAN ADD. DETAIL 20 AS SHOWN. (TOTAL = 562L)
 2C. 8" WHITE STRIPE PER STATE STANDARD PLAN ADD. DETAIL 9 AS SHOWN. (TOTAL = 507L)
 2E. 4" WCH YELLOW LEFT EDGE LINE PER STATE STANDARD PLAN ADD. DETAIL 25 AS SHOWN. (TOTAL = 664L)
- 3 APPLY NEW THERMOPLASTIC PAVEMENT LEGENDS:
 3A. 2" WCH WHITE TRAIL PER STATE STANDARD PLAN ADD. (TOTAL LENGTH = 0')
 3B. 2" TYPE 1-24 ARROW PER STATE STANDARD PLAN ADD. 4
 3C. TYPE 0-10 ARROW PER STATE STANDARD PLAN ADD. 6
 3D. 6" TYPE W-11 ARROW PER STATE STANDARD PLAN ADD. 6



FOR GEOMETRIC PLANE ORIGINAL
 SCALE 3/4" = 1' - 000000

SPECIFICATION NO. 43866
 CITY CONTRACT, CIP No. 92-209.1
 PLANS FOR THE CONSTRUCTION OF:



STRIPING PLAN
 ROSECRANS STREET AND MIDWAY DRIVE
 ROSECRANS ST. DEL DELORS DR. & SPORTS ARENA
 NORTH STA 4+00 TO 5+00

CITY OF SAN DIEGO, CALIFORNIA
 PUBLIC WORKS DEPARTMENT
 1997 S D ST

MA 52204

CONTRACTOR MUST NOTIFY THE
 PUBLIC WORKS DEPARTMENT AT
 LEAST 72 HOURS BEFORE ANY
 WORK TO COMMENCEMENT OF
 CONSTRUCTION.

NO.	DATE	BY	REVISION

DESIGNED BY	
DRAWN BY	
CHECKED BY	
DATE	
PROJECT NO.	

APPROVED FOR THE CITY

DATE: _____

3450R-6-Q

C/D/P FILES/CIP PROJECTS

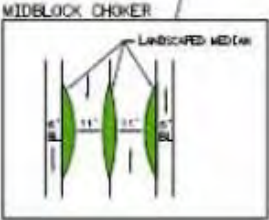
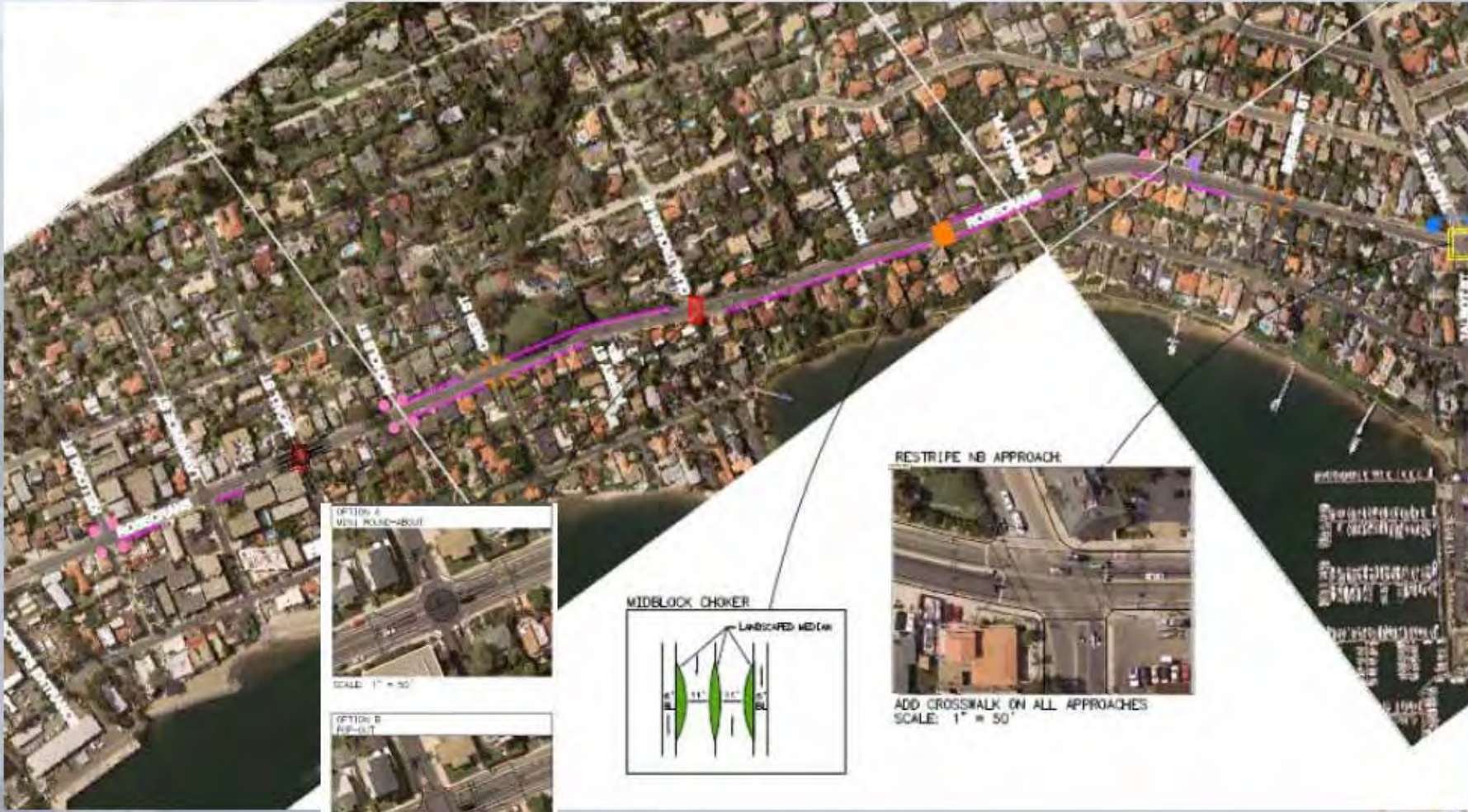
3450R-6-Q ROSECRANS STREET AND MIDWAY DRIVE





PRELIMINARY ALTERNATIVE CONCEPTS

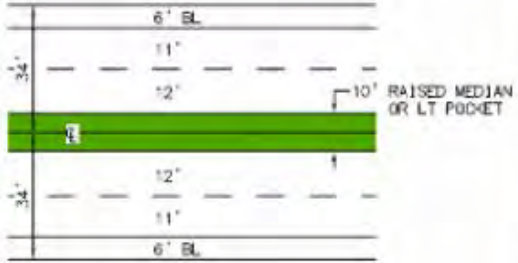
Area 4



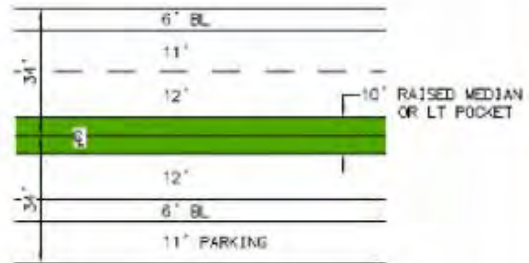
Area 3



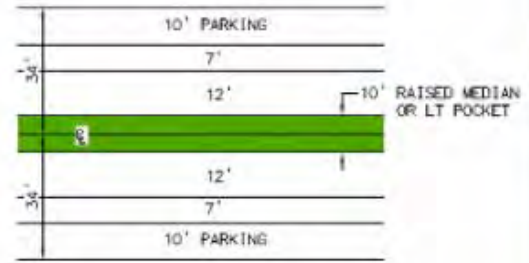
OPTION A



OPTION B



OPTION C



Area 2





Break Out Groups (20 – 30 min)

Upcoming Meetings

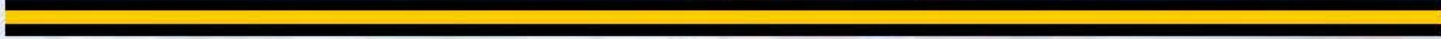


- Workshop #2: September 16th
 - 6:00 p.m.
 - NTC Events Center
- PWG Meeting: September 14th
 - 6:45 p.m.
 - NTC Command Center
 - Topic: Results of Workshop & Refinements of Alternatives



209

5 8



RBF
RESEARCH & DESIGN



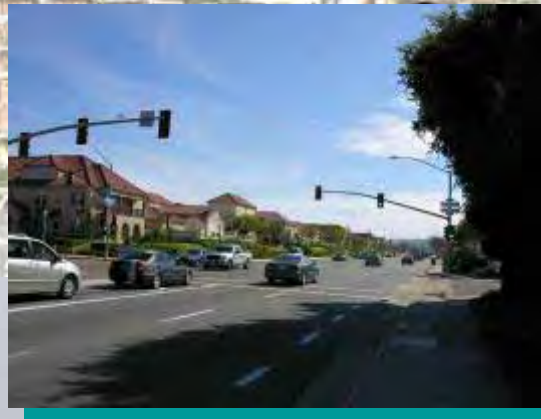
Study Area



Area 1: Taylor - Lytton



Area 2: Lytton to Nimitz



Area 3 & 4: Nimitz to Kellogg

