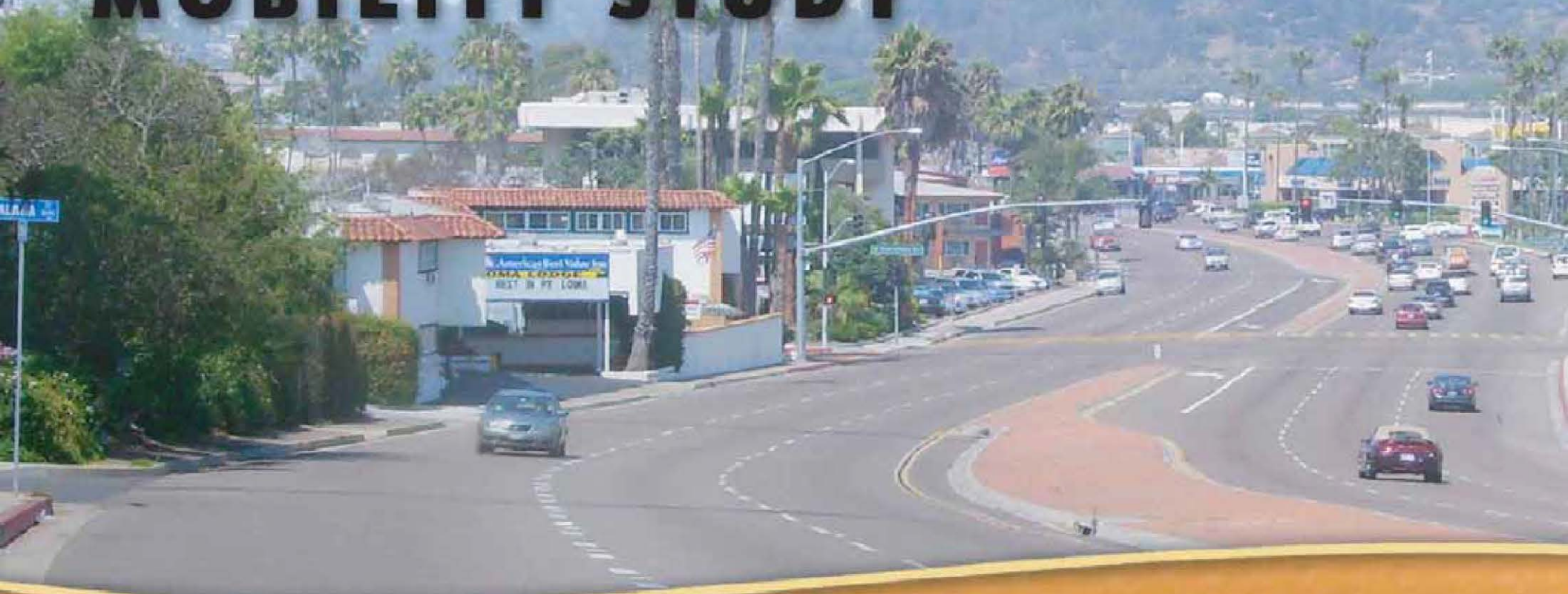


# **Project Working Group**

## **ROSECRANS CORRIDOR**

### **MOBILITY STUDY**



# Agenda



- Introductions
- Opening Comments
- Administrative Items
- Role of PWG
- Overview of study
- Schedule of Meetings/Topics
- Public Comments
- Discussion Groups & Report Out
- Final items

# Administrative Items



- Time, Date, Location of Meetings
- Sharing Contact Information
- Posting Information on Website (photo & bio)

# Draft Mission Statement



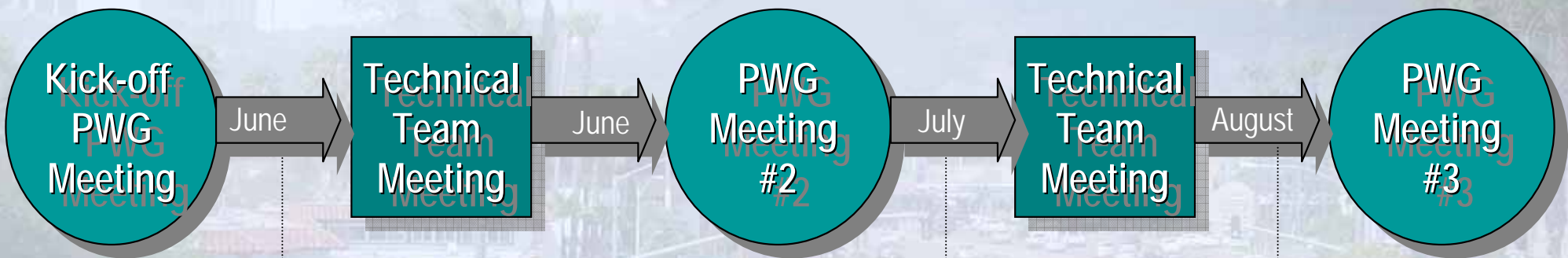
The mission of the Rosecrans Corridor Mobility Study Project Working Group is to **provide recommendations** to the City of San Diego about **potential solutions** to improve *vehicular, transit, pedestrian, and bicycle* mobility in the Rosecrans Corridor study area. The Working Group will serve as **a forum for collaboration, the discussion of issues and exchange of ideas** between City and affected communities.

# Participation Guidelines



- Serve as representatives of your respective organizations
- Report back to your organizations on the Rosecrans process
- Attend all scheduled PWG meetings
- Respect the established Ground Rules
- Reserve use of email for distribution of information – not “dialogue” on issues

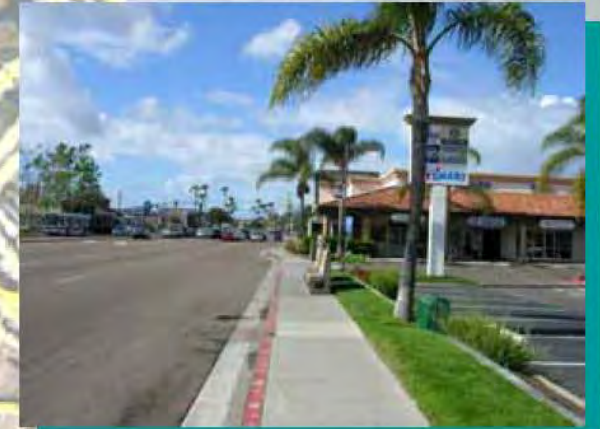
# General Process



# Study Area

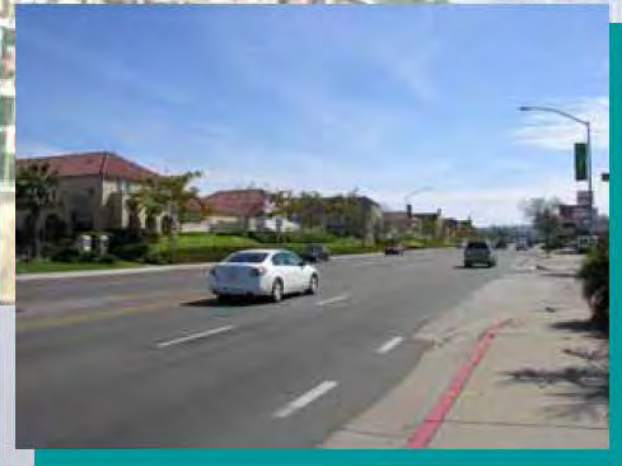
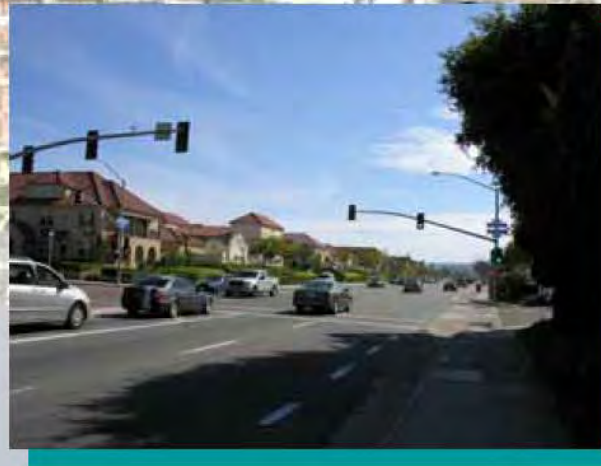


# Area 1: Taylor - Lytton





# Area 2: Lytton to Nimitz



# Area 3 & 4: Nimitz to Kellogg

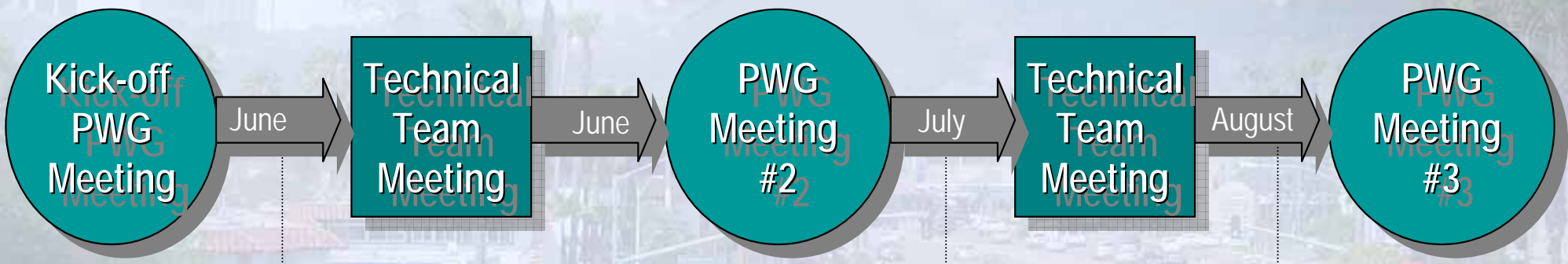


# 20 Work Program



- Community Outreach
- Technical Analysis
  - Traffic Study
  - Transit Assessment
  - Pedestrian/Bicycle Assessment
  - Parking Evaluation
- Conceptual Engineering
- Initial Study

# Work Program & Schedule



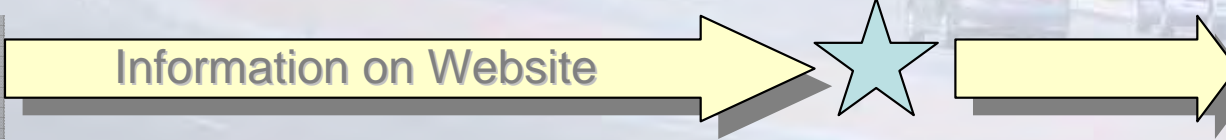
**Existing Conditions Analysis**

**Future Conditions Analysis**

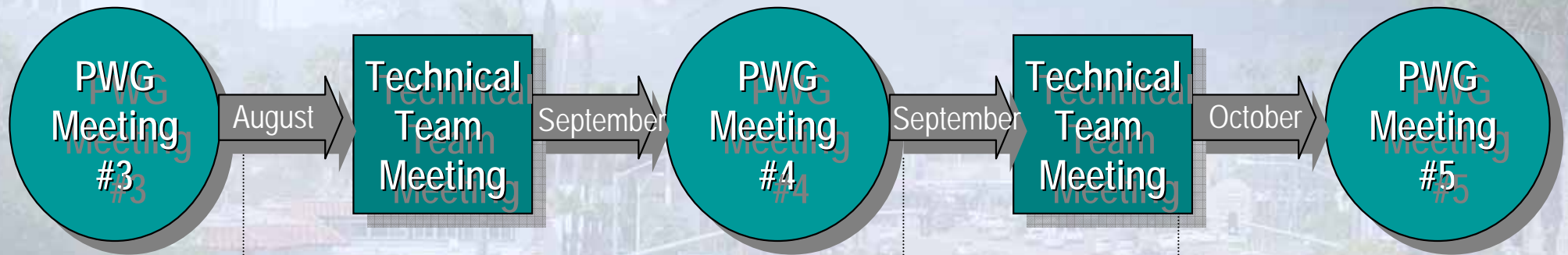
**Development of Alternatives**

**1st Workshop**

**Walk Audits**



# Work Program & Schedule



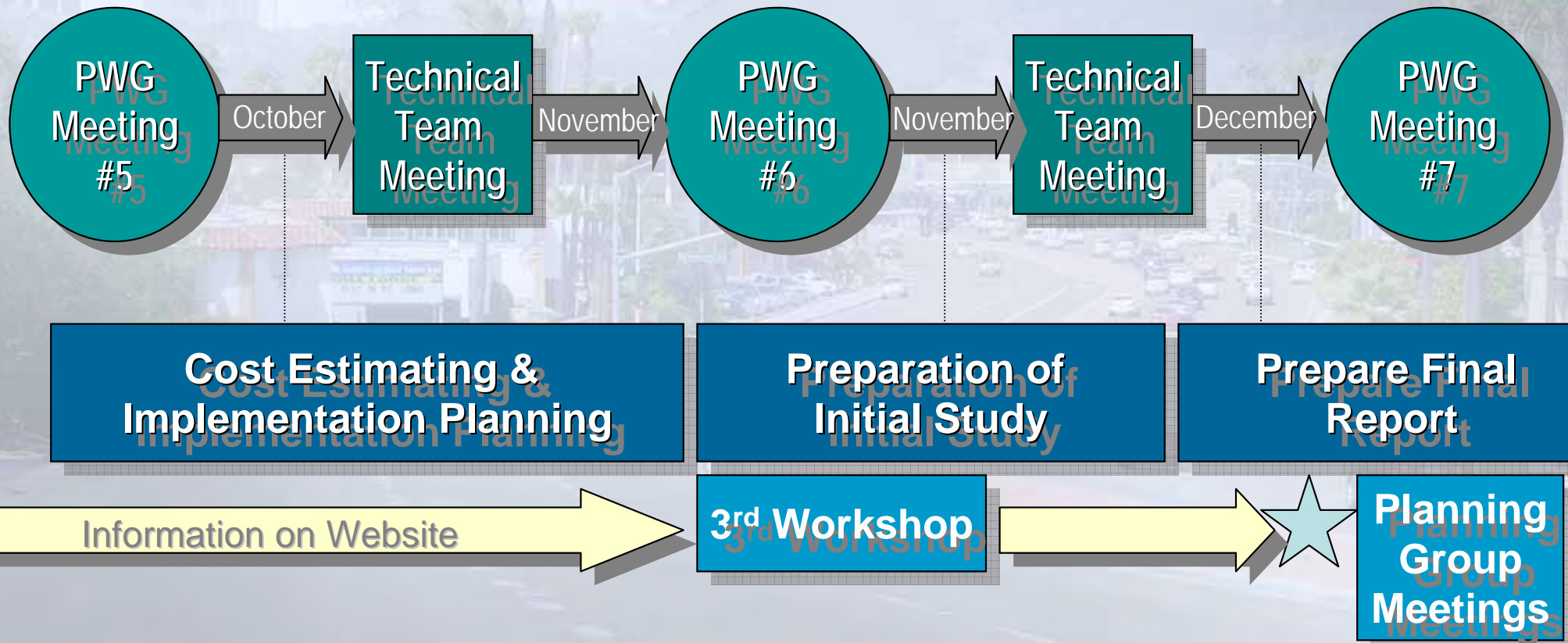
**Alternatives Analysis**

**Physical Constraints & Pedestrian Study**

**Select Preferred Alternative**



# Work Program & Schedule



# Community Outreach



- Project Working Group Meetings
- 3 Community Workshops
  - June 22<sup>nd</sup> (Need Location)
  - September 15<sup>th</sup>
  - November 10<sup>th</sup>
- 3 Walk Audits
  - June/July 2009
- Presentations to Community Groups



# PWG Tasks



- What issues/concerns do you have for the study corridor?
- What ideas do you have to improve the corridor?
- What are your expectations of this process?



# *Next Month...*



- Walk Audit (ALTA Planning)
- Review of Existing Conditions Analysis
- Results of First Workshop