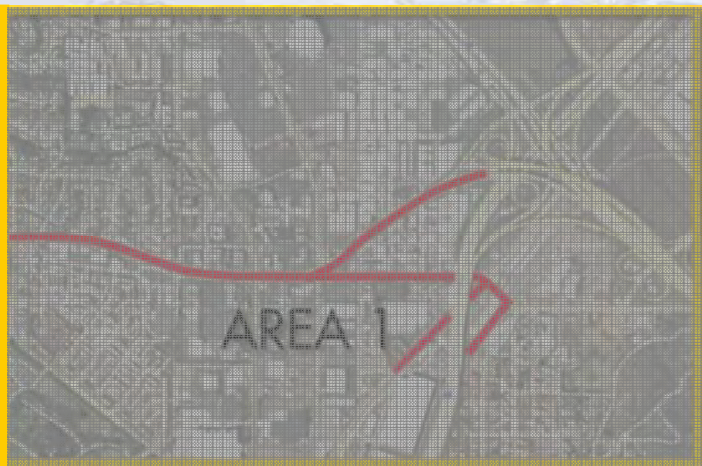
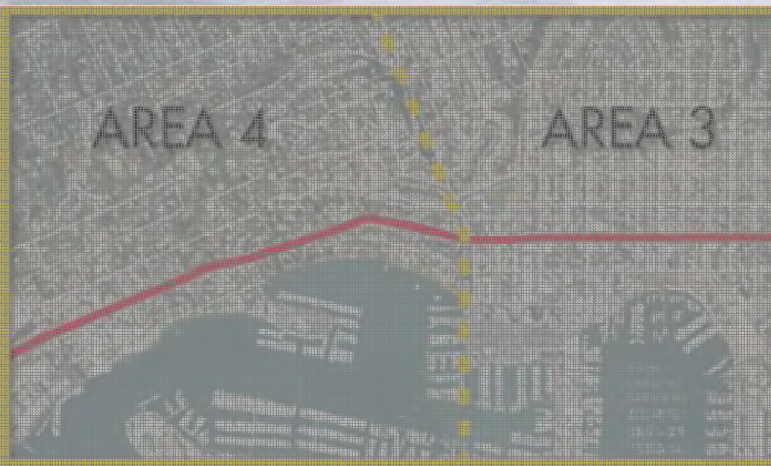


AREA 2: Nimitz to Lytton



Kellogg to Canon Canon to Nimitz

Nimitz to Lytton

Lytton to Taylor

AREA 2: LYTTON TO NIMITZ

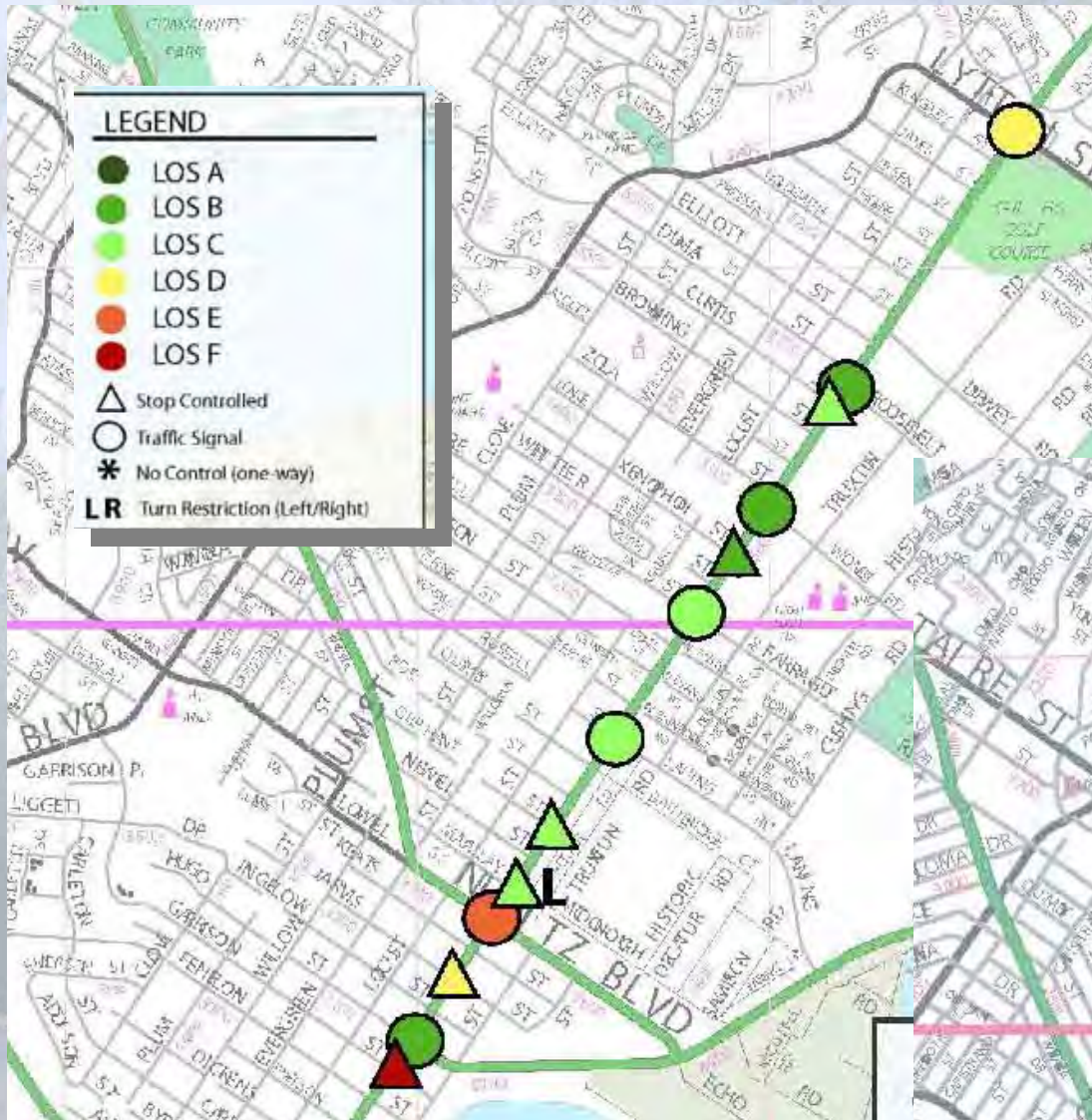


ISSUES & CONCERNS

- Access from side streets
- Traffic congestion
- Wider bicycle lanes needed



Existing Conditions



Key Areas of Concern



- F Lack of Access from West Side to Rosecrans
- G Left Turns Onto/Off of Rosecrans
- H Narrow Bicycle Lanes (4') and Lack of Buffer
- I Uncomfortable Pedestrian Environment
- J Location of Transit Stops along Corridor

AREA 2: LYTTON TO NIMITZ



PRELIMINARY
RECOMMENDATIONS

Preliminary Recommended Improvement:

Modify Signals at Dumas/Roosevelt and Zola/Womble to Improve Access

F

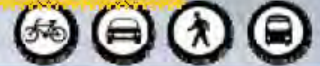


Move stop lines back to allow side streets to turn with signal

Preliminary Recommended Improvement:

Intermittent Medians and Left-Turn Pockets Improve Traffic Flow & Reduce Side Street Delay

G



Preliminary Recommended Improvement :

Widen Bicycle Lanes from 4 to 6 feet by Reducing Median Width



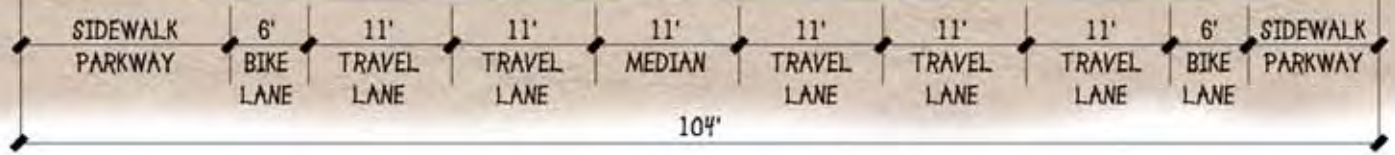
Existing Right-of-Way to remain the same



EXISTING RIGHT-OF-WAY

CENTERLINE

EXISTING RIGHT-OF-WAY



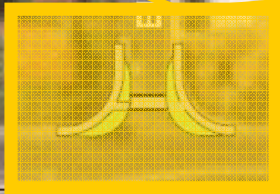
Preliminary Recommended Improvement :

Side Street Curb Extensions Reduce Pedestrian Crossing Distance



EXISTING
PROPOSED

Elliott St



Preliminary Recommended Improvement :

Relocate Transit Stops from Porter/Udall to Farragut/Voltaire to be Closer to the Crosswalk

J

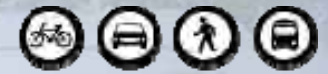


CITY POLICY



"City staff coordinates with SANDAG/MTS to help provide safe and accessible transit stops. In recent years a number of key transfer points have been consolidated at off-street transit centers which have fewer pedestrian conflicts with through traffic, thereby improving safety. Where possible, bus stops are located on the far side of an intersection to provide better motorist visibility of passengers getting on and off the bus and crossing the street."

City of San Diego Council Policy No. 200-07 (April 2009)



Follow the arrows around the room to continue

