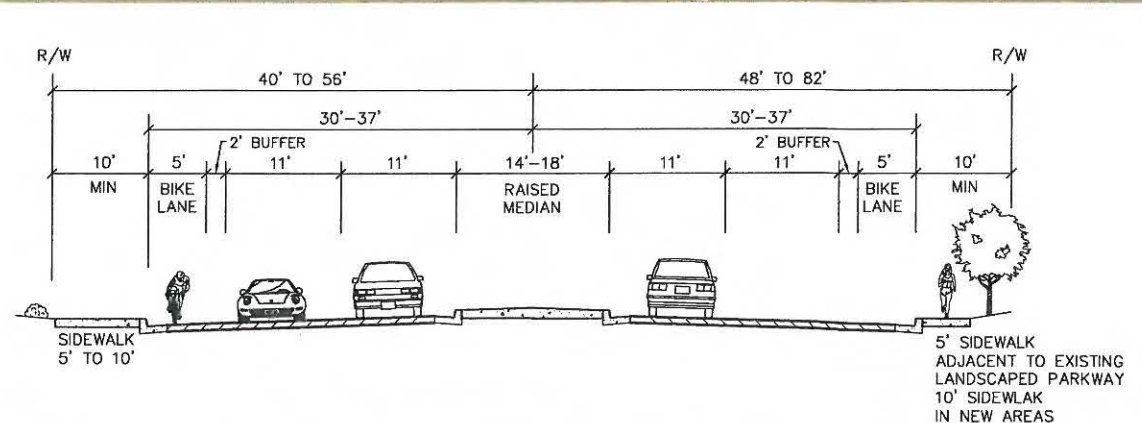
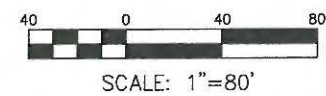




Elements of Mobility Plan



DAVID EVANS AND ASSOCIATES INC.
Darnell & ASSOCIATES, INC.
 TRANSPORTATION PLANNING & TRAFFIC ENGINEERING



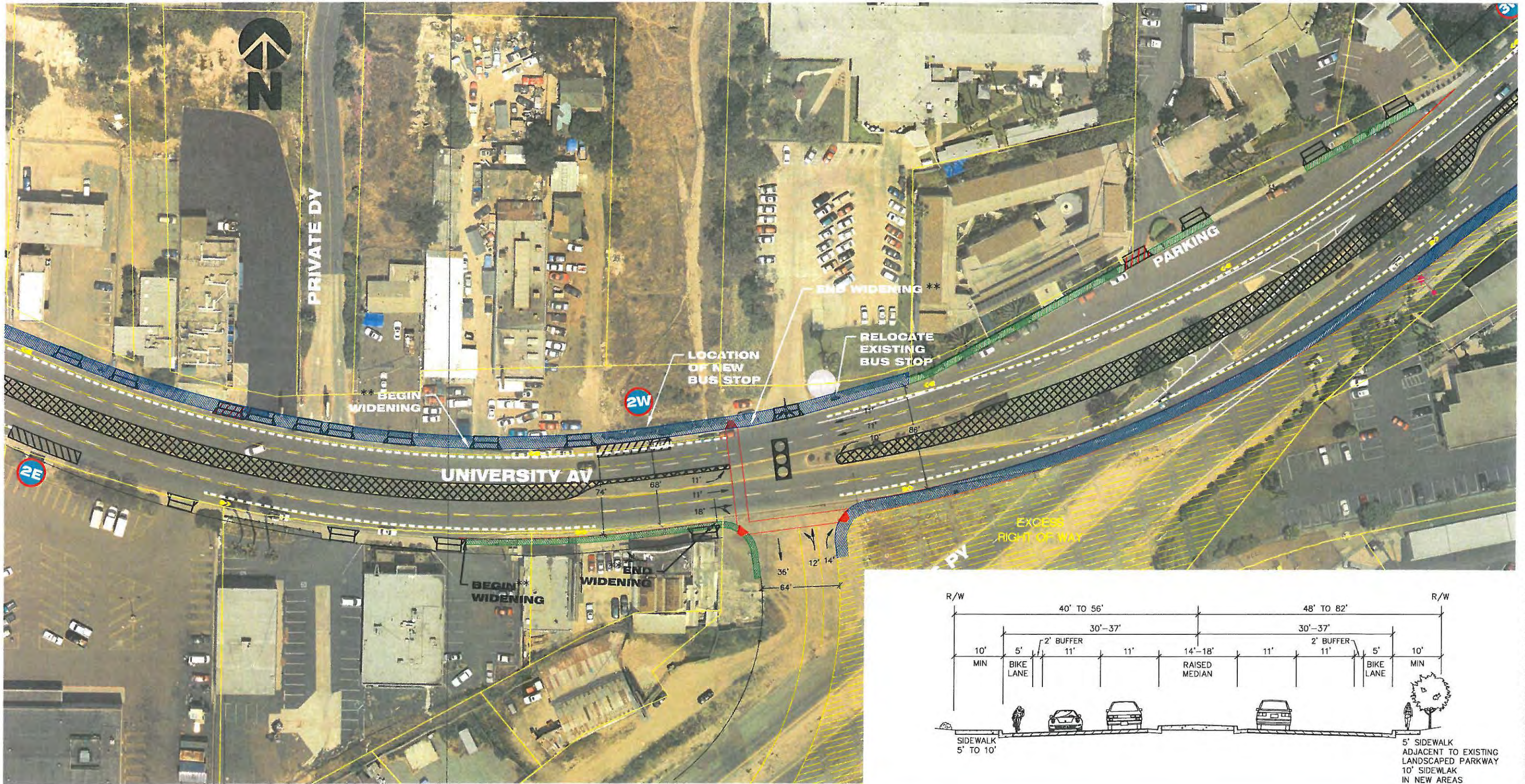
* BICYCLE/TRANSIT THROUGH LANE VEHICLES RIGHT TURN ONLY.
 ** LOCATIONS APPROXIMATE

LEGEND

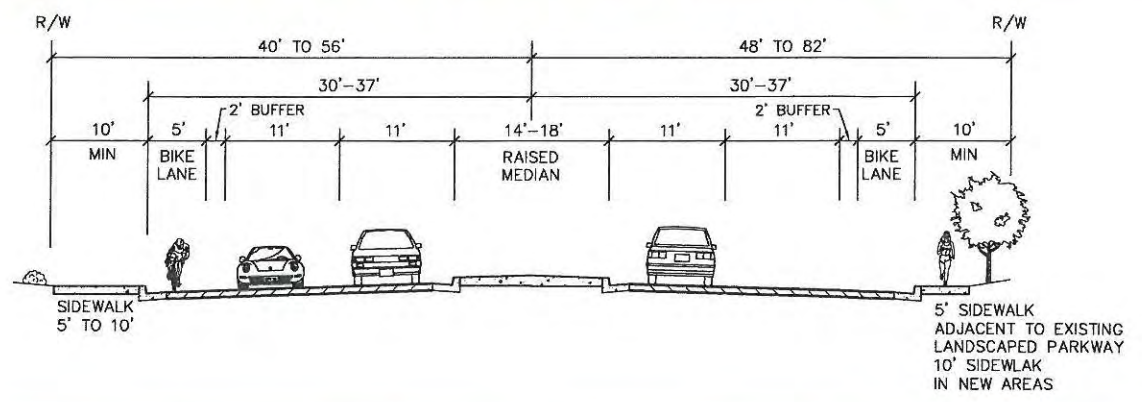
- | | | | | | |
|--|--------------------------------|--|--------------------------------|--|------------------------------|
| | EXIST. ADA COMPLIANT CURB RAMP | | REPLACE SIDEWALK - 10' WIDE | | PROPOSED BUS PAD |
| | PROPOSED CURB RAMP | | REPLACE/ADD SIDEWALK - 5' WIDE | | PROPOSED RAISED MEDIAN |
| | REPLACE EXIST. STREET LIGHT | | WIDEN EXIST. SIDEWALK - 5' | | REMOVE/RESTRIPE PARKING |
| | REPLACE EXIST. DRIVEWAY | | BUS ROUTE 7 BUS STOP # | | RELOCATED EXIST. FENCE |
| | REMOVE EXIST. DRIVEWAY | | BUS ROUTE 10 BUS STOP # | | TRAFFIC SIGNAL - NEW/UPGRADE |
| | DISCREPANCY IN R.O.W. | | | | |

**UNIVERSITY AVENUE
 MOBILITY PLAN
 OPTION 1**

**54TH STREET
 SHEET 1 OF SHEET 11**



Elements of Mobility Plan



DAVID EVANS AND ASSOCIATES INC.
Darnell & ASSOCIATES, INC.
 TRANSPORTATION PLANNING & TRAFFIC ENGINEERING



* BICYCLE/TRANSIT THROUGH LANE VEHICLES RIGHT TURN ONLY.
 ** LOCATIONS APPROXIMATE

LEGEND

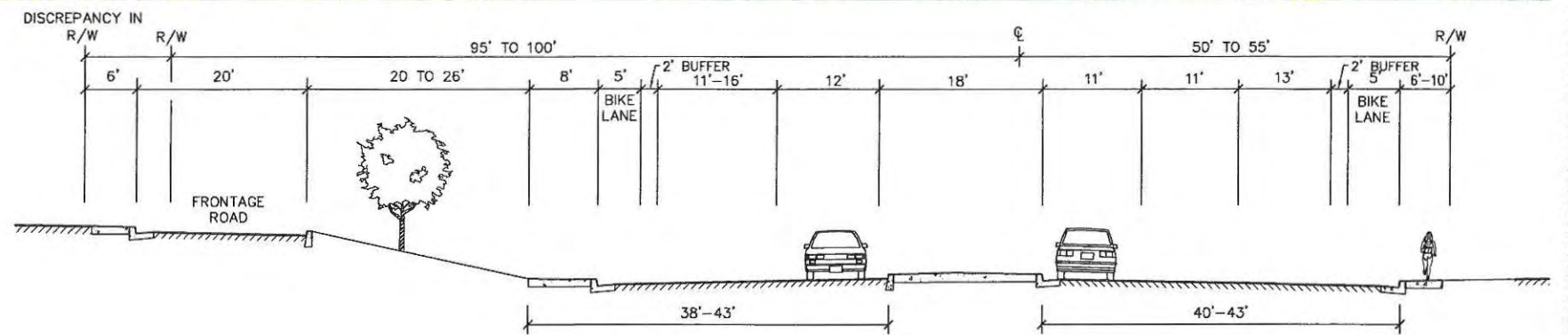
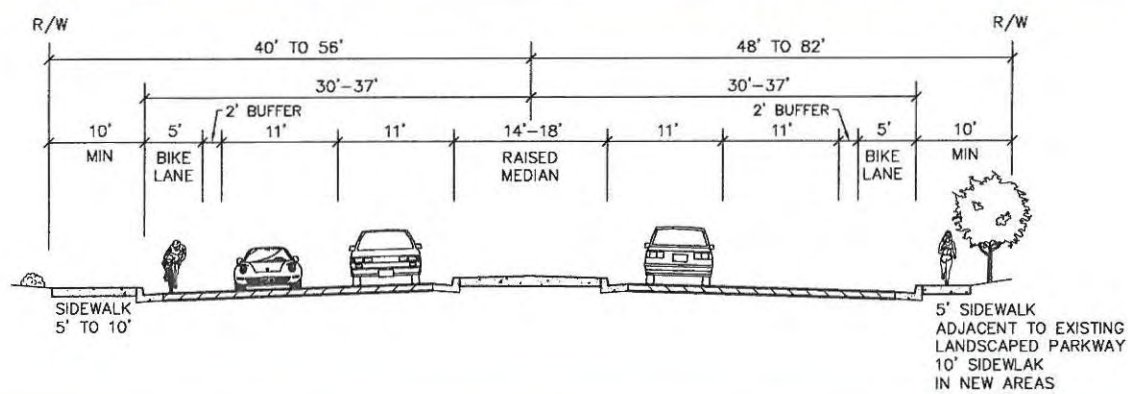
- | | | | | | |
|--|--------------------------------|--|--------------------------------|--|------------------------------|
| | EXIST. ADA COMPLIANT CURB RAMP | | REPLACE SIDEWALK - 10' WIDE | | PROPOSED BUS PAD |
| | PROPOSED CURB RAMP | | REPLACE/ADD SIDEWALK - 5' WIDE | | PROPOSED RAISED MEDIAN |
| | REPLACE EXIST. STREET LIGHT | | WIDEN EXIST. SIDEWALK - 5' | | REMOVE/RESTRIPE PARKING |
| | REPLACE EXIST. DRIVEWAY | | BUS ROUTE 7 BUS STOP # | | RELOCATED EXIST. FENCE |
| | REMOVE EXIST. DRIVEWAY | | BUS ROUTE 10 BUS STOP # | | TRAFFIC SIGNAL - NEW/UPGRADE |
| | DISCREPANCY IN R.O.W. | | | | |

UNIVERSITY AVENUE MOBILITY PLAN OPTION 1

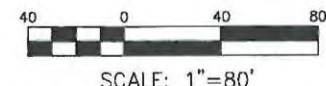
CHOLLAS PARKWAY SHEET 2 OF SHEET 11



Elements of Mobility Plan



Darnell
& ASSOCIATES, INC.
TRANSPORTATION PLANNING
& TRAFFIC ENGINEERING



* BICYCLE/TRANSIT THROUGH LANE VEHICLES RIGHT TURN ONLY.

LEGEND

- EXIST. ADA COMPLIANT CURB RAMP
- PROPOSED CURB RAMP
- REPLACE EXIST. STREET LIGHT
- REPLACE EXIST. DRIVEWAY
- REMOVE EXIST. DRIVEWAY
- DISCREPANCY IN R.O.W.
- REPLACE SIDEWALK - 10' WIDE
- REPLACE/ADD SIDEWALK - 5' WIDE
- WIDEN EXIST. SIDEWALK - 5'
- BUS ROUTE 7 BUS STOP #
- BUS ROUTE 10 BUS STOP #
- PROPOSED BUS PAD
- PROPOSED RAISED MEDIAN
- REMOVE/RESTRIPE PARKING
- RELOCATED EXIST. FENCE
- TRAFFIC SIGNAL - NEW/UPGRADE

**UNIVERSITY AVENUE
MOBILITY PLAN
OPTION 1**

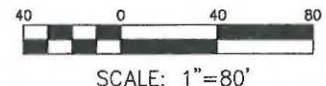
**58TH STREET
SHEET 3 OF SHEET 11**



Elements of Mobility Plan



Darnell & Associates, Inc.
TRANSPORTATION PLANNING
& TRAFFIC ENGINEERING



* BICYCLE/TRANSIT THROUGH LANE VEHICLES RIGHT TURN ONLY.

LEGEND

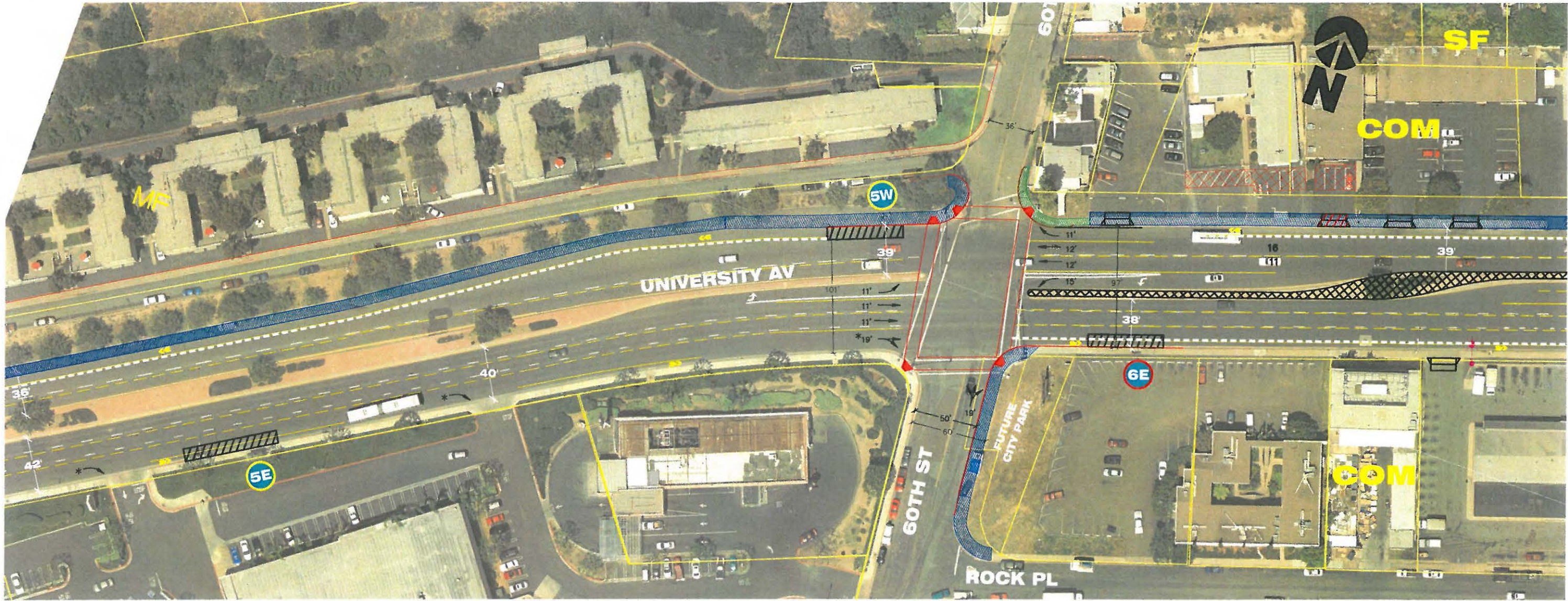
- EXIST. ADA COMPLIANT CURB RAMP
- PROPOSED CURB RAMP
- REPLACE EXIST. STREET LIGHT
- REPLACE EXIST. DRIVEWAY
- REMOVE EXIST. DRIVEWAY
- DISCREPANCY IN R.O.W.

- REPLACE SIDEWALK - 10' WIDE
- REPLACE/ADD SIDEWALK - 5' WIDE
- WIDEN EXIST. SIDEWALK - 5'
- BUS ROUTE 7 BUS STOP #
- BUS ROUTE 10 BUS STOP #

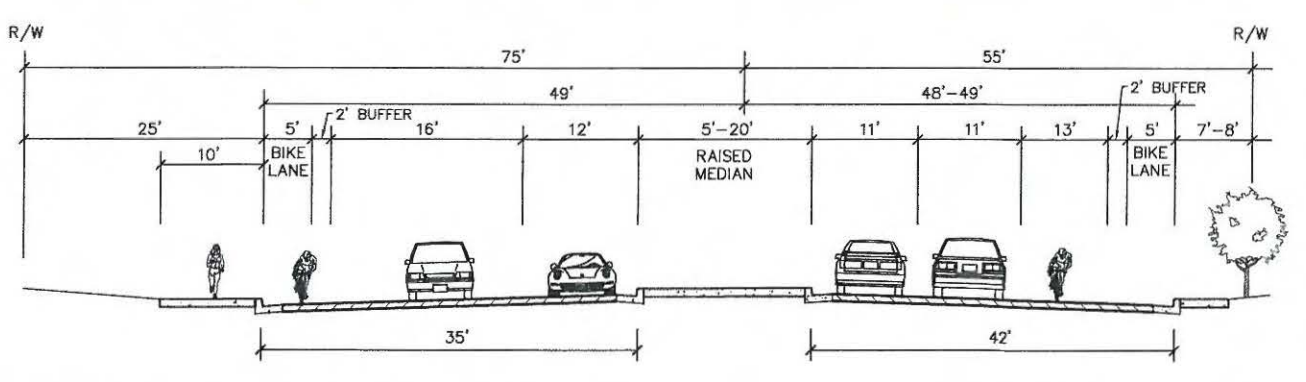
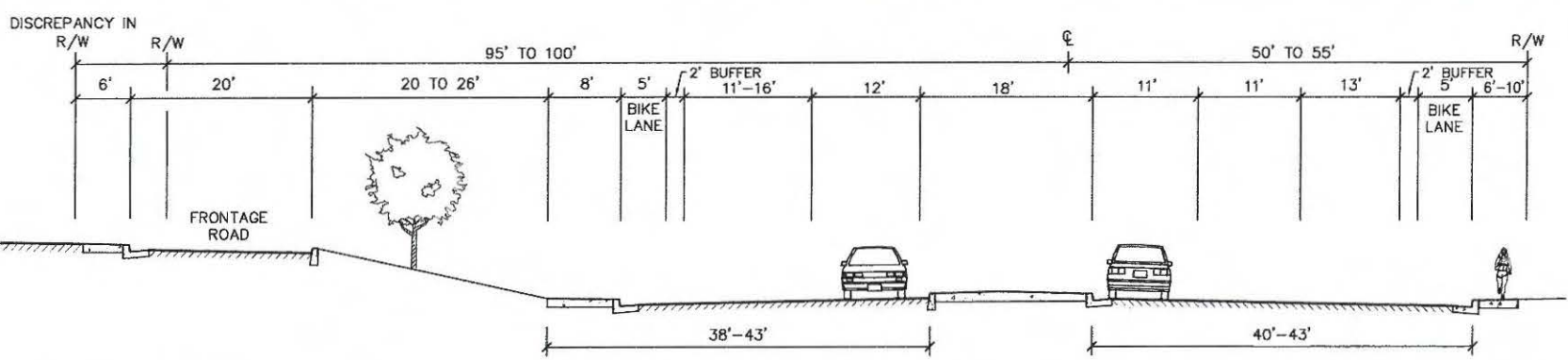
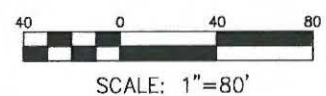
- PROPOSED BUS PAD
- PROPOSED RAISED MEDIAN
- REMOVE/RESTRIPE PARKING
- RELOCATED EXIST. FENCE
- TRAFFIC SIGNAL - NEW/UPGRADE

**UNIVERSITY AVENUE
MOBILITY PLAN
OPTION 1**

UNIVERSITY SQUARE
SHEET 4 OF SHEET 11



Elements of Mobility Plan

* BICYCLE/TRANSIT THROUGH LANE VEHICLES RIGHT TURN ONLY.

LEGEND

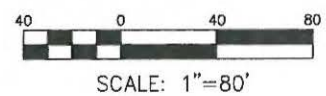
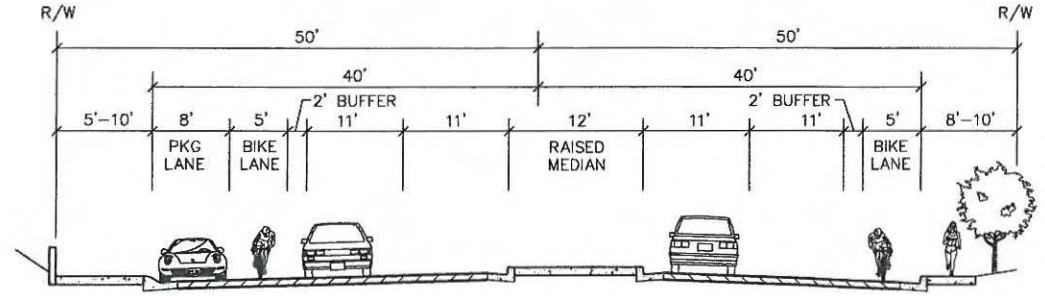
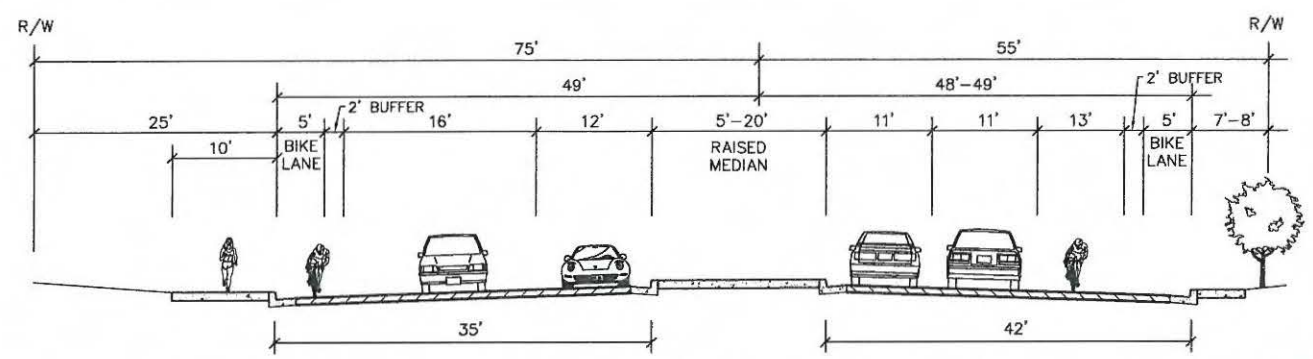
- | | | | | | |
|--|--------------------------------|--|--------------------------------|--|------------------------------|
| | EXIST. ADA COMPLIANT CURB RAMP | | REPLACE SIDEWALK - 10' WIDE | | PROPOSED BUS PAD |
| | PROPOSED CURB RAMP | | REPLACE/ADD SIDEWALK - 5' WIDE | | PROPOSED RAISED MEDIAN |
| | REPLACE EXIST. STREET LIGHT | | WIDEN EXIST. SIDEWALK - 5' | | REMOVE/RESTRIPE PARKING |
| | REPLACE EXIST. DRIVEWAY | | BUS ROUTE 7 BUS STOP # | | RELOCATED EXIST. FENCE |
| | REMOVE EXIST. DRIVEWAY | | BUS ROUTE 10 BUS STOP # | | TRAFFIC SIGNAL - NEW/UPGRADE |
| | DISCREPANCY IN R.O.W. | | | | |

**UNIVERSITY AVENUE
MOBILITY PLAN
OPTION 1**

**60TH STREET
SHEET 5 OF SHEET 11**



Elements of Mobility Plan



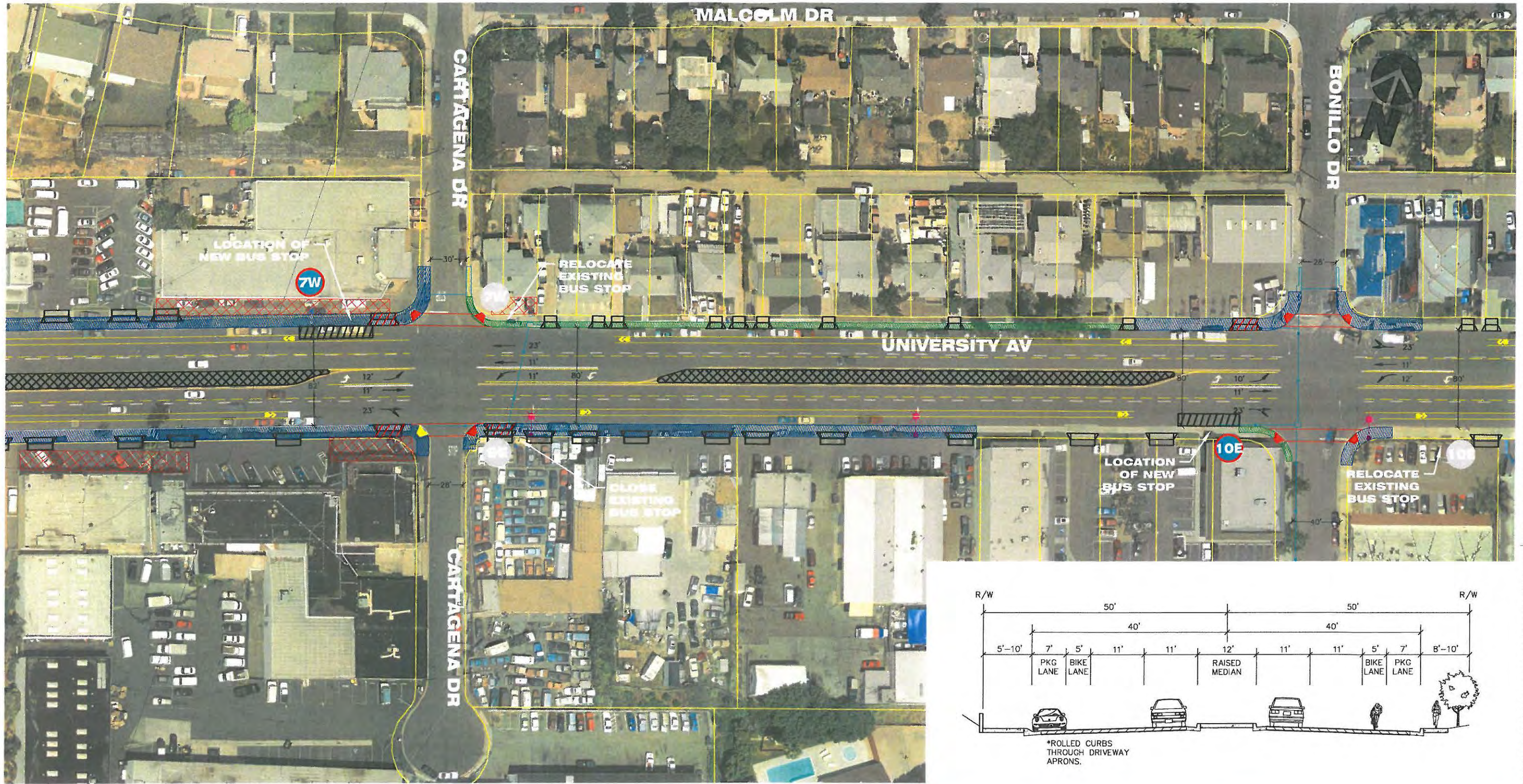
* BICYCLE/TRANSIT THROUGH LANE VEHICLES RIGHT TURN ONLY.

LEGEND

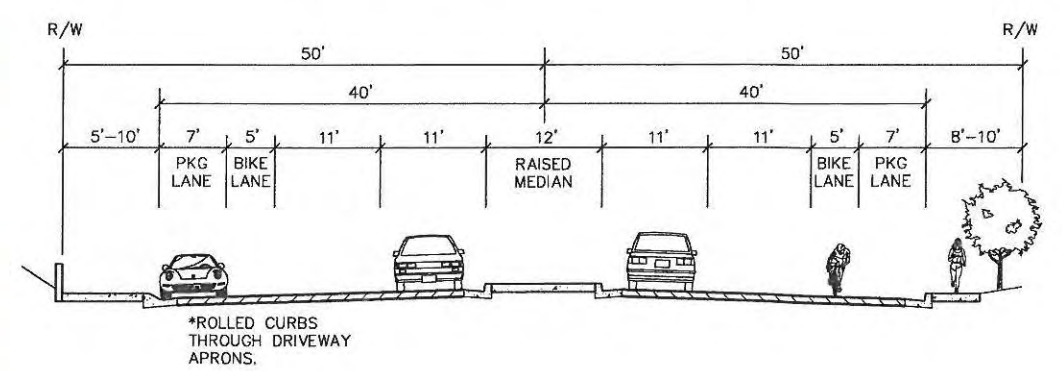
- | | | | | | |
|--|--------------------------------|--|--------------------------------|--|------------------------------|
| | EXIST. ADA COMPLIANT CURB RAMP | | REPLACE SIDEWALK - 10' WIDE | | PROPOSED BUS PAD |
| | PROPOSED CURB RAMP | | REPLACE/ADD SIDEWALK - 5' WIDE | | PROPOSED RAISED MEDIAN |
| | REPLACE EXIST. STREET LIGHT | | WIDEN EXIST. SIDEWALK - 5' | | REMOVE/RESTRIPE PARKING |
| | REPLACE EXIST. DRIVEWAY | | DISCREPANCY IN R.O.W. | | RELOCATED EXIST. FENCE |
| | REMOVE EXIST. DRIVEWAY | | BUS ROUTE 7 BUS STOP # | | TRAFFIC SIGNAL - NEW/UPGRADE |
| | | | BUS ROUTE 10 BUS STOP # | | |

**UNIVERSITY AVENUE
MOBILITY PLAN
OPTION 1**

**COLLEGE AVENUE
SHEET 6 OF SHEET 11**



Elements of Mobility Plan



DAVID EVANS AND ASSOCIATES INC.
Darnell & ASSOCIATES, INC.
 TRANSPORTATION PLANNING & TRAFFIC ENGINEERING

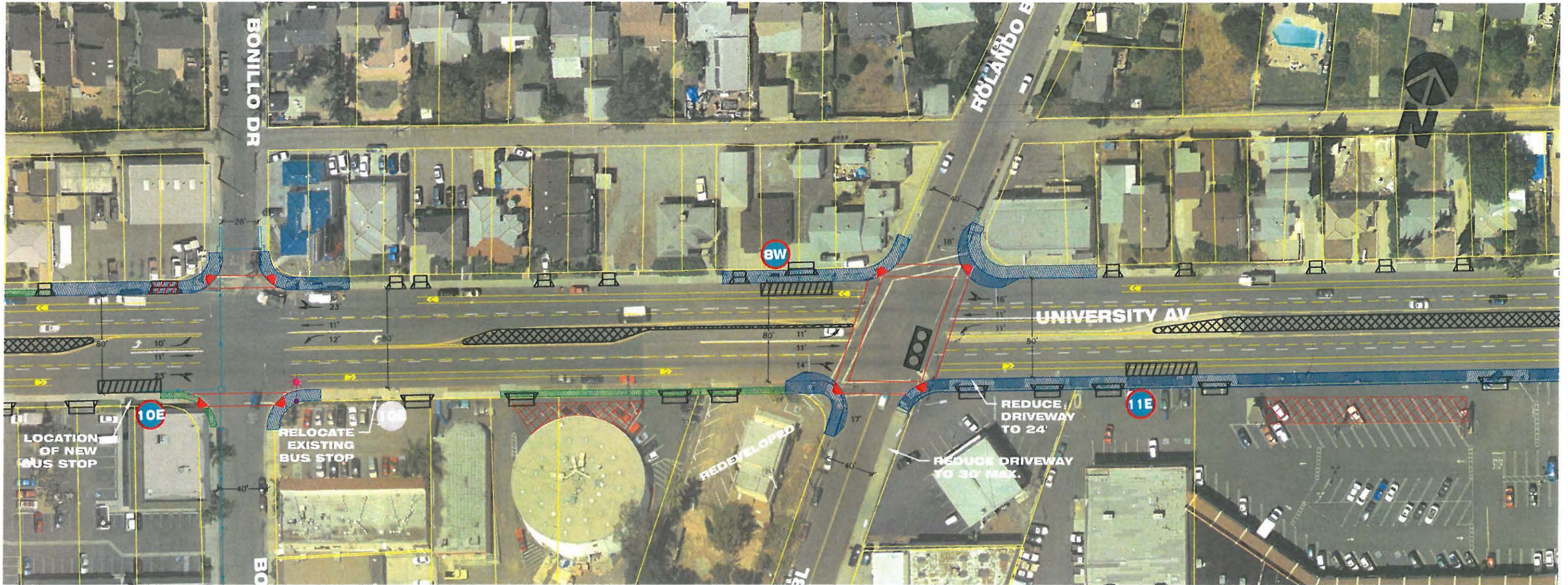


LEGEND

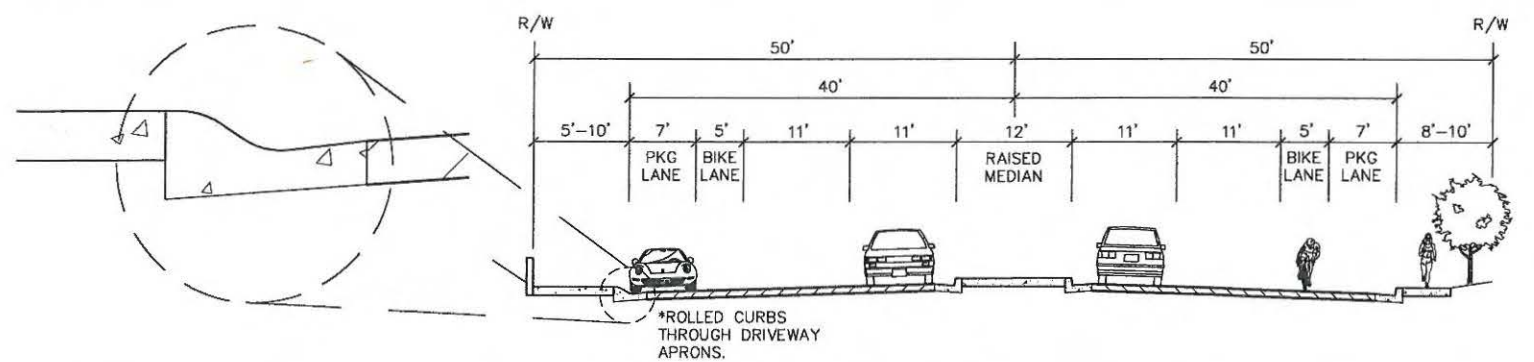
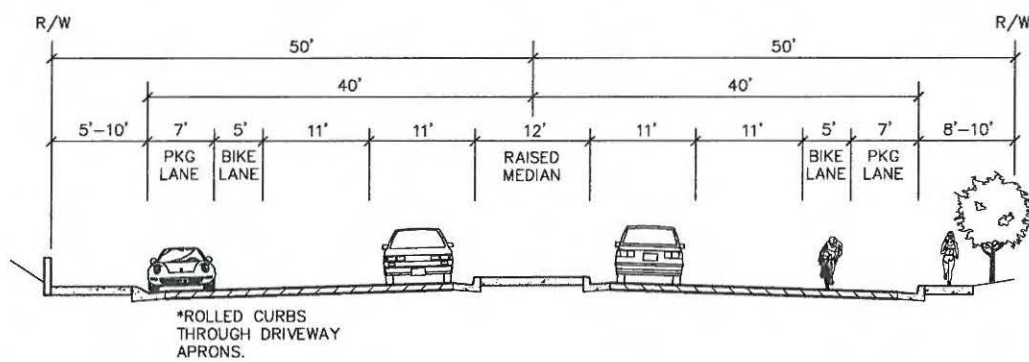
- | | | | | | |
|--|--------------------------------|--|-----------------------------|--|------------------------------|
| | EXIST. ADA COMPLIANT CURB RAMP | | REPLACE SIDEWALK - 10' WIDE | | PROPOSED BUS PAD |
| | PROPOSED CURB RAMP | | REPLACE SIDEWALK - 5' WIDE | | PROPOSED RAISED MEDIAN |
| | REPLACE EXIST. STREET LIGHT | | WIDEN EXIST. SIDEWALK - 5' | | REMOVE/RESTRIPE PARKING |
| | REPLACE EXIST. DRIVEWAY | | BUS ROUTE 7 BUS STOP # | | RELOCATED EXIST. FENCE |
| | REMOVE EXIST. DRIVEWAY | | BUS ROUTE 10 BUS STOP # | | TRAFFIC SIGNAL - NEW/UPGRADE |
| | DISCREPANCY IN R.O.W. | | | | |

UNIVERSITY AVENUE MOBILITY PLAN OPTION 1

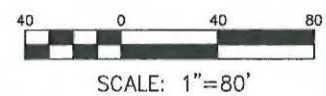
CARTEGENA AND BONILLO DR
 SHEET 7 OF SHEET 11



Elements of Mobility Plan



LEGEND	
	EXIST. ADA COMPLIANT CURB RAMP
	PROPOSED CURB RAMP
	REPLACE EXIST. STREET LIGHT
	REPLACE EXIST. DRIVEWAY
	REMOVE EXIST. DRIVEWAY
	DISCREPANCY IN R.O.W.
	REPLACE SIDEWALK - 10' WIDE
	REPLACE SIDEWALK - 5' WIDE
	WIDEN EXIST. SIDEWALK - 5'
	BUS ROUTE 7 BUS STOP #
	BUS ROUTE 10 BUS STOP #
	PROPOSED BUS PAD
	PROPOSED RAISED MEDIAN
	REMOVE/RESTRIPE PARKING
	RELOCATED EXIST. FENCE
	TRAFFIC SIGNAL - NEW/UPGRADE

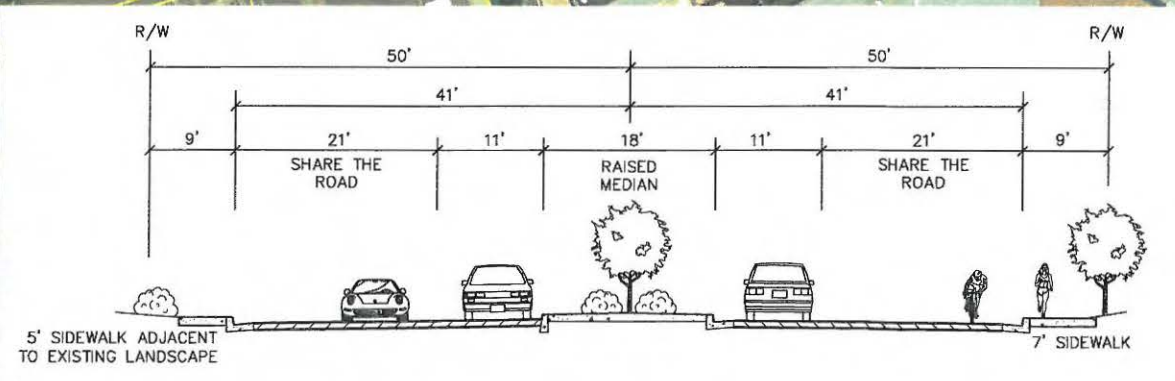
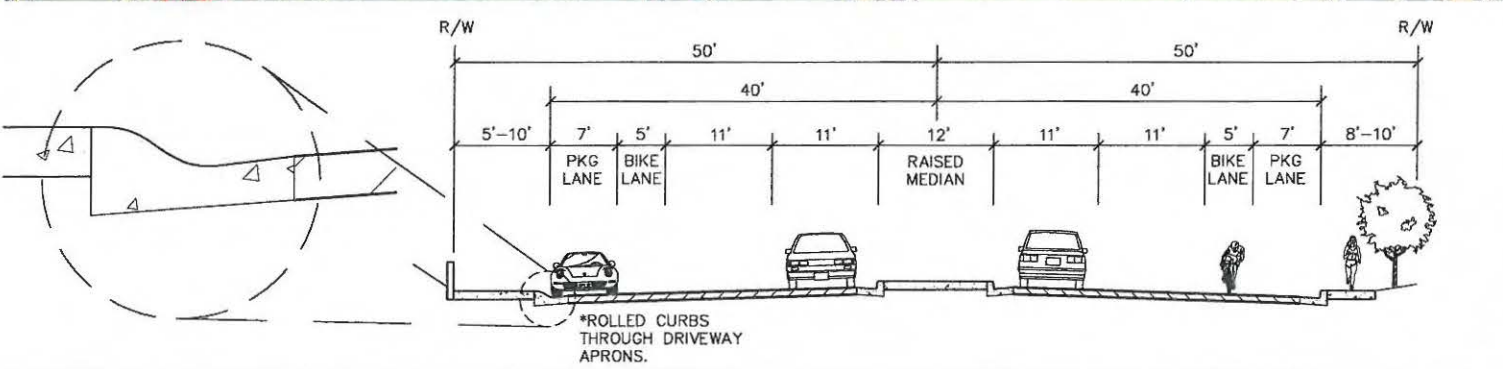


**UNIVERSITY AVENUE
MOBILITY PLAN
OPTION 1**

**ROLANDO BLVD
SHEET 8 OF SHEET 11**

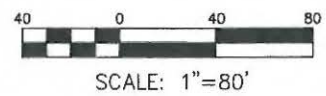


Elements of Mobility Plan



DAVID EVANS AND ASSOCIATES INC.

Darnell & ASSOCIATES, INC.
TRANSPORTATION PLANNING & TRAFFIC ENGINEERING

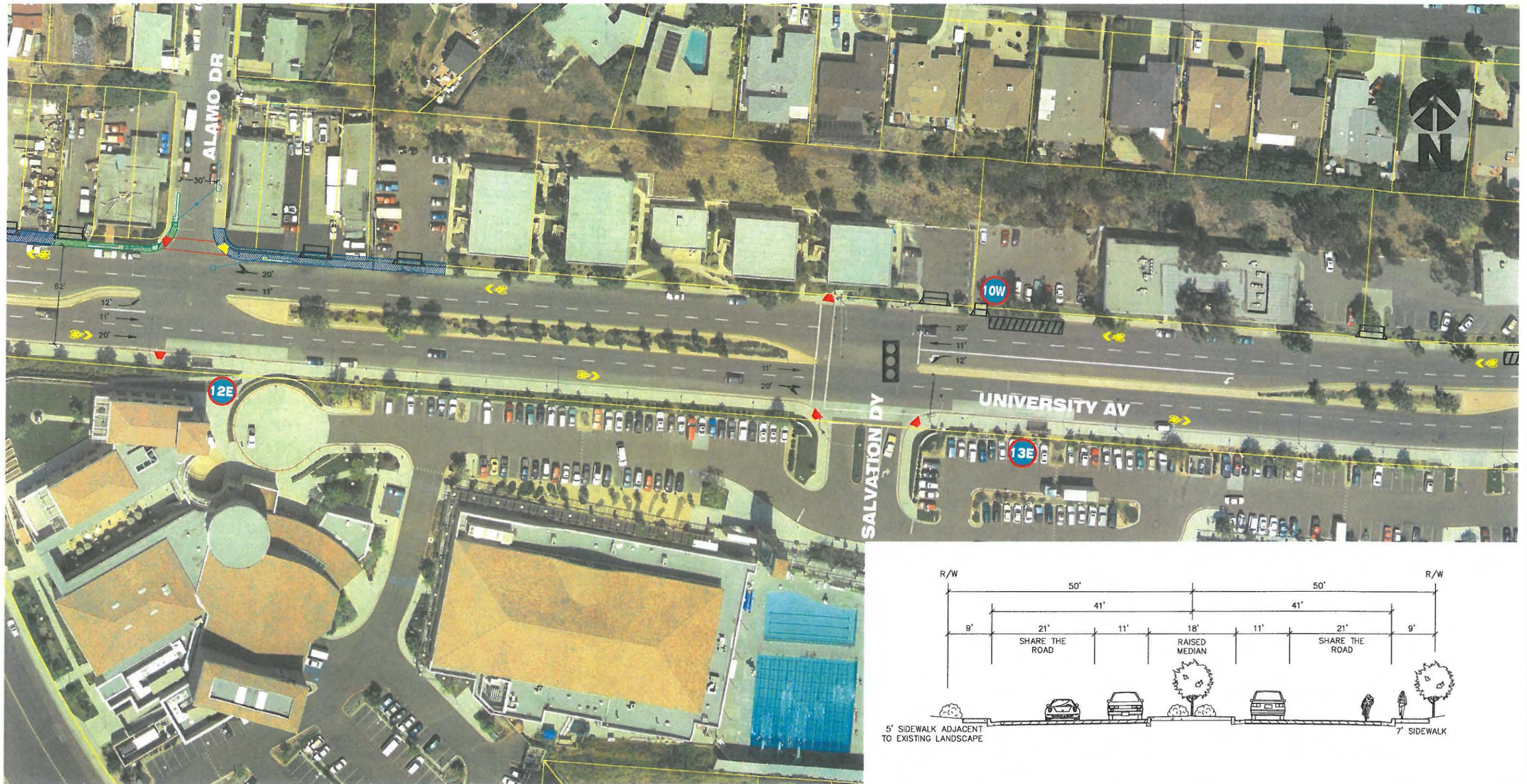


LEGEND

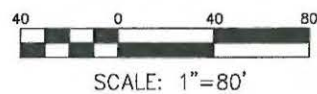
- | | | | | | |
|--|--------------------------------|--|-----------------------------|--|------------------------------|
| | EXIST. ADA COMPLIANT CURB RAMP | | REPLACE SIDEWALK - 10' WIDE | | PROPOSED BUS PAD |
| | PROPOSED CURB RAMP | | REPLACE SIDEWALK - 5' WIDE | | PROPOSED RAISED MEDIAN |
| | REPLACE EXIST. STREET LIGHT | | WIDEN EXIST. SIDEWALK - 5' | | REMOVE/RESTRIPE PARKING |
| | REPLACE EXIST. DRIVEWAY | | BUS ROUTE 7 BUS STOP # | | RELOCATED EXIST. FENCE |
| | REMOVE EXIST. DRIVEWAY | | BUS ROUTE 10 BUS STOP # | | TRAFFIC SIGNAL - NEW/UPGRADE |
| | DISCREPANCY IN R.O.W. | | | | |

UNIVERSITY AVENUE MOBILITY PLAN OPTION 1

ARAGON DRIVE
SHEET 9 OF SHEET 11



Elements of Mobility Plan

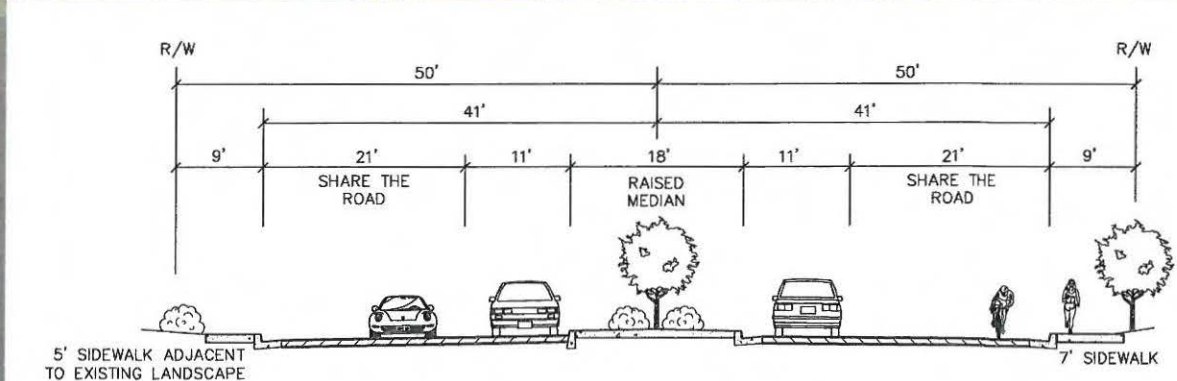


LEGEND

- | | | | | | |
|--|--------------------------------|--|-----------------------------|--|------------------------------|
| | EXIST. ADA COMPLIANT CURB RAMP | | REPLACE SIDEWALK - 10' WIDE | | PROPOSED BUS PAD |
| | PROPOSED CURB RAMP | | REPLACE SIDEWALK - 5' WIDE | | PROPOSED RAISED MEDIAN |
| | REPLACE EXIST. STREET LIGHT | | WIDEN EXIST. SIDEWALK - 5' | | REMOVE/RESTRIPE PARKING |
| | REPLACE EXIST. DRIVEWAY | | BUS ROUTE 7 BUS STOP # | | RELOCATED EXIST. FENCE |
| | REMOVE EXIST. DRIVEWAY | | BUS ROUTE 10 BUS STOP # | | TRAFFIC SIGNAL - NEW/UPGRADE |
| | DISCREPANCY IN R.O.W. | | | | |

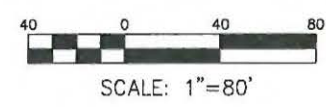
**UNIVERSITY AVENUE
 MOBILITY PLAN
 OPTION 1**

JOAN KROC CENTER
 SHEET 10 OF SHEET 11



Elements of Mobility Plan

DAVID EVANS AND ASSOCIATES INC.
Darnell & ASSOCIATES, INC.
 TRANSPORTATION PLANNING & TRAFFIC ENGINEERING



LEGEND

	EXIST. ADA COMPLIANT CURB RAMP		REPLACE SIDEWALK - 10' WIDE		PROPOSED BUS PAD
	PROPOSED CURB RAMP		REPLACE SIDEWALK - 5' WIDE		PROPOSED RAISED MEDIAN
	REPLACE EXIST. STREET LIGHT		WIDEN EXIST. SIDEWALK - 5'		REMOVE/RESTRIPE PARKING
	REPLACE EXIST. DRIVEWAY		BUS ROUTE 7 BUS STOP #		RELOCATED EXIST. FENCE
	REMOVE EXIST. DRIVEWAY		BUS ROUTE 10 BUS STOP #		TRAFFIC SIGNAL - NEW/UPGRADE
	DISCREPANCY IN R.O.W.				

**UNIVERSITY AVENUE
 MOBILITY PLAN
 OPTION 1**

**68TH AND 69TH STREETS
 SHEET 11 OF SHEET 11**