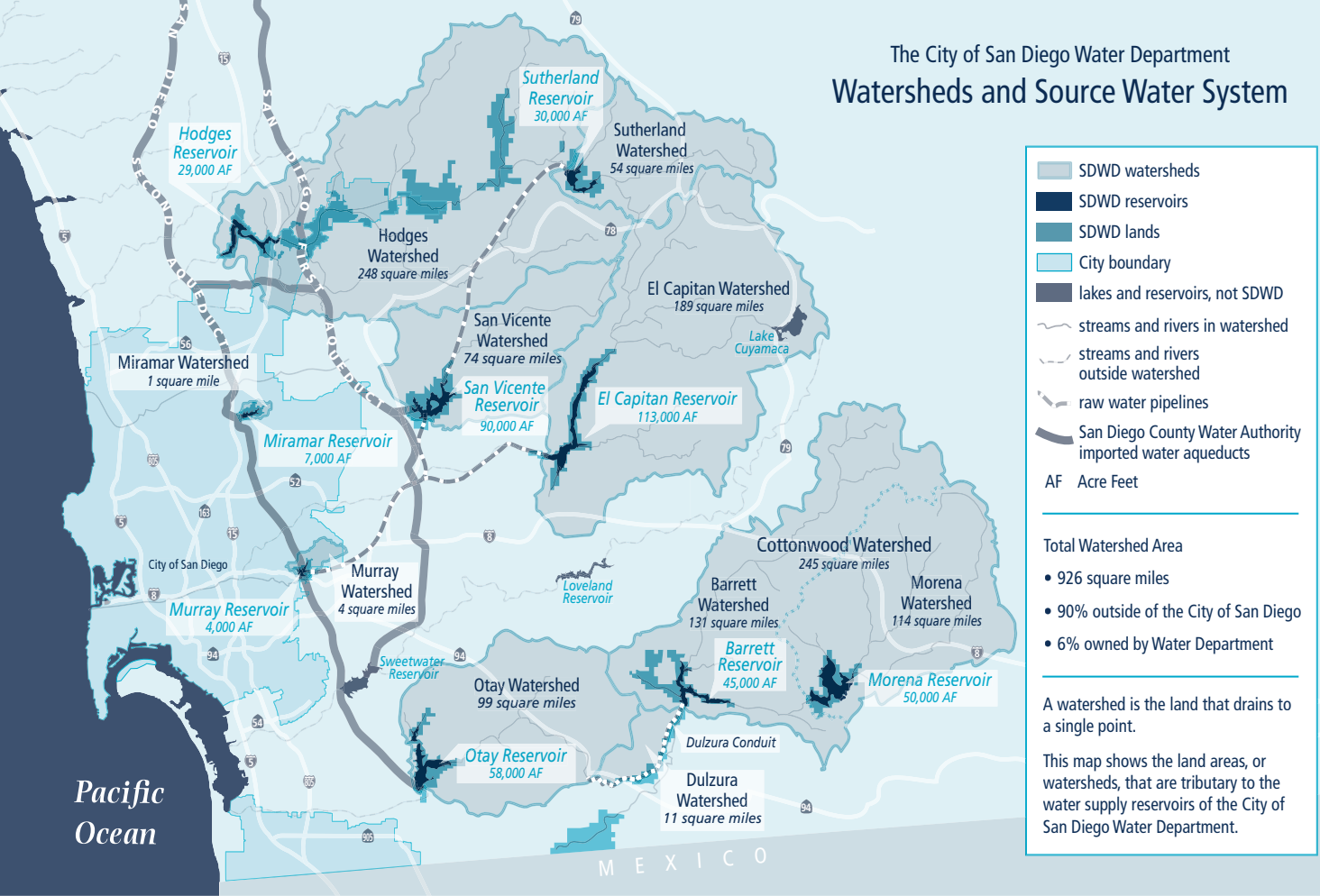


The City of San Diego Water Department Watersheds and Source Water System



- SDWD watersheds
 - SDWD reservoirs
 - SDWD lands
 - City boundary
 - lakes and reservoirs, not SDWD
 - streams and rivers in watershed
 - streams and rivers outside watershed
 - raw water pipelines
 - San Diego County Water Authority imported water aqueducts
- AF Acre Feet

- Total Watershed Area**
- 926 square miles
 - 90% outside of the City of San Diego
 - 6% owned by Water Department

A watershed is the land that drains to a single point.

This map shows the land areas, or watersheds, that are tributary to the water supply reservoirs of the City of San Diego Water Department.

Pacific Ocean

MEXICO