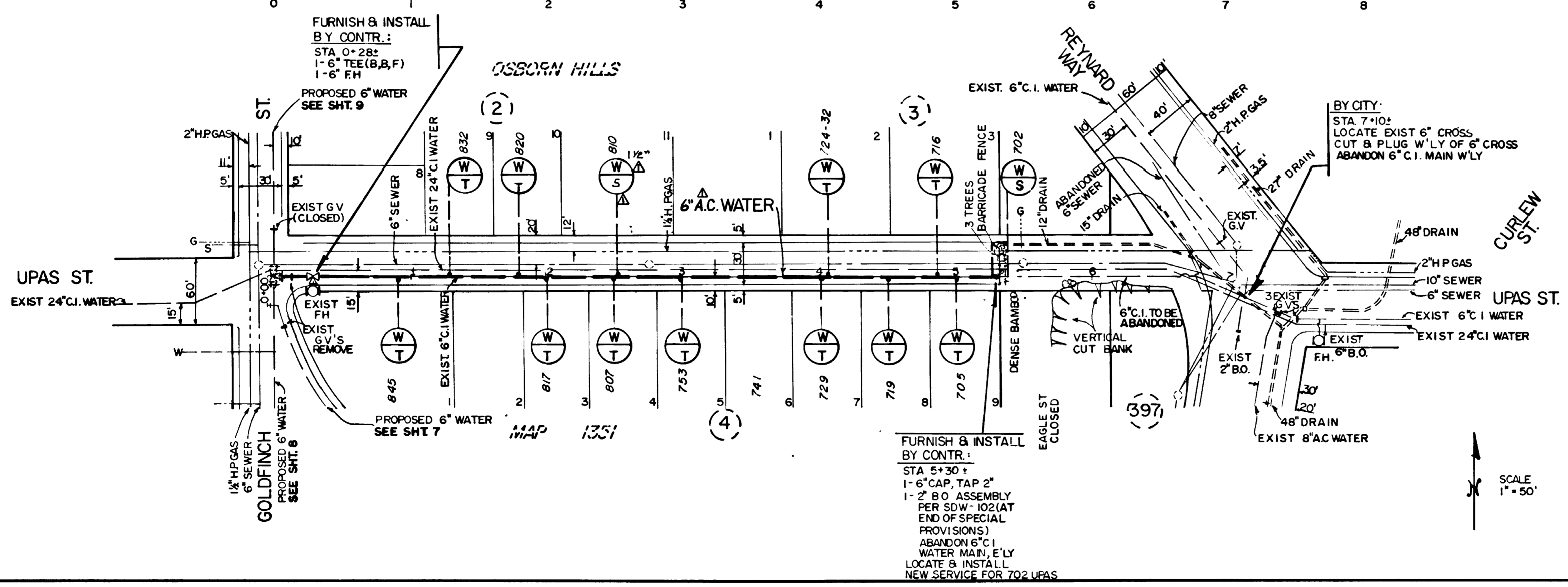


SCALE
 1" = 50' HORIZ.
 1" = 5' VERT.



BENCHMARK:
 S.E.B.P., THORN ST & HAWK ST, EL. 214.258
 S.E.B.P., EAGLE ST. & REYNARD WAY, EL. 100.956

FIELD NOTES:
 BURRIS, 208-1716, 2-81, W.O. 148134, 9 SHTS.

RETIREMENT:
 715', 6" C.I., 2521-L, 1928
 1-6" F.H., 2521-L, 1928

WATER GROUP 433			
6" WATER MAIN			
UPAS ST - GOLDFINCH ST. TO 540' EAST			
CITY OF SAN DIEGO, CALIFORNIA UTILITIES DEPARTMENT SHEET 10 OF 15 SHEETS		E.S.O. 148134 U.W.O. 10181	
UTILITIES DIRECTOR		DATE	
DESCRIPTION	BY	APPROVED	FILMED
ORIGINAL	CM/PC		
AS BUILT	J.M.B.	2-2-82	
CONSTRUCTION RECORD		CONTROL CERTIFICATION	
CONTRACTOR L.M.H.		DATE STARTED 10-21-82	
INSPECTOR J.C. HENRY		DATE COMPLETED 5-5-83	
CONNECTIONS BY: CITY		208-1717	
		LAMBERT COORDINATES	
196 95-10-D			

△ ALL VALVES ARE DRESSER BUTTERFLY VALVES