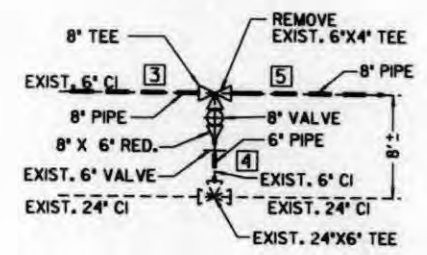
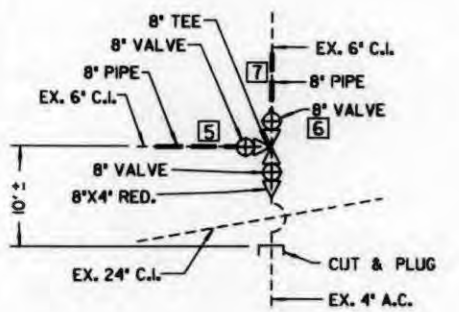


DETAIL "A"
SCALE: NONE



DETAIL "B"
SCALE: NONE



DETAIL "C"
SCALE: NONE

① BY CITY FORCES
AHEAD OF CONTRACTOR
STA. 1+45 ±, 10' RT.
FURNISH AND INSTALL
1- 8"X6" TEE (F)

1- 8" VALVE AHD. (F)
1- 8" ADAPTOR AHD. (F,M,J)
1- 6" VALVE RT. (F)
1- 6" ADAPTOR RT. (F,M,J)
CLOSE VALVE AHD.

STA. 1+45 ±, 28' RT.
REMOVE EXIST. 6"X4" RED.
AND EXIST. 6" VALVE.

AFTER NEW MAIN HAS BEEN
ACCEPTED MAKE CONNECTION
FROM WHERE EXIST. 6" VALVE
WAS REMOVED TO 8"X6" TEE
AT STA. 1+45 ±, 10' RT.
OPEN VALVE AHD.

(SEE DETAIL "A")

② BY CITY FORCES
AHEAD OF CONTRACTOR
STA. 2+45 ±, 15' RT.
CLOSE EXIST. 6" VALVE
AFTER NEW MAIN HAS BEEN
ACCEPTED, REMOVE EXIST. 6" VALVE
MAKE CONNECTION FROM 8"X6" RED.
TO EXIST. 24"X6" TEE @ 2+45 ±, 18' RT.
OPEN NEW VALVE RT.

BY CONTRACTOR
STA. 2+45 ±, 10' RT.
FURNISH AND INSTALL
1- 8" TEE (F)
1- 8" ADAPTOR BK. (M,J,F)

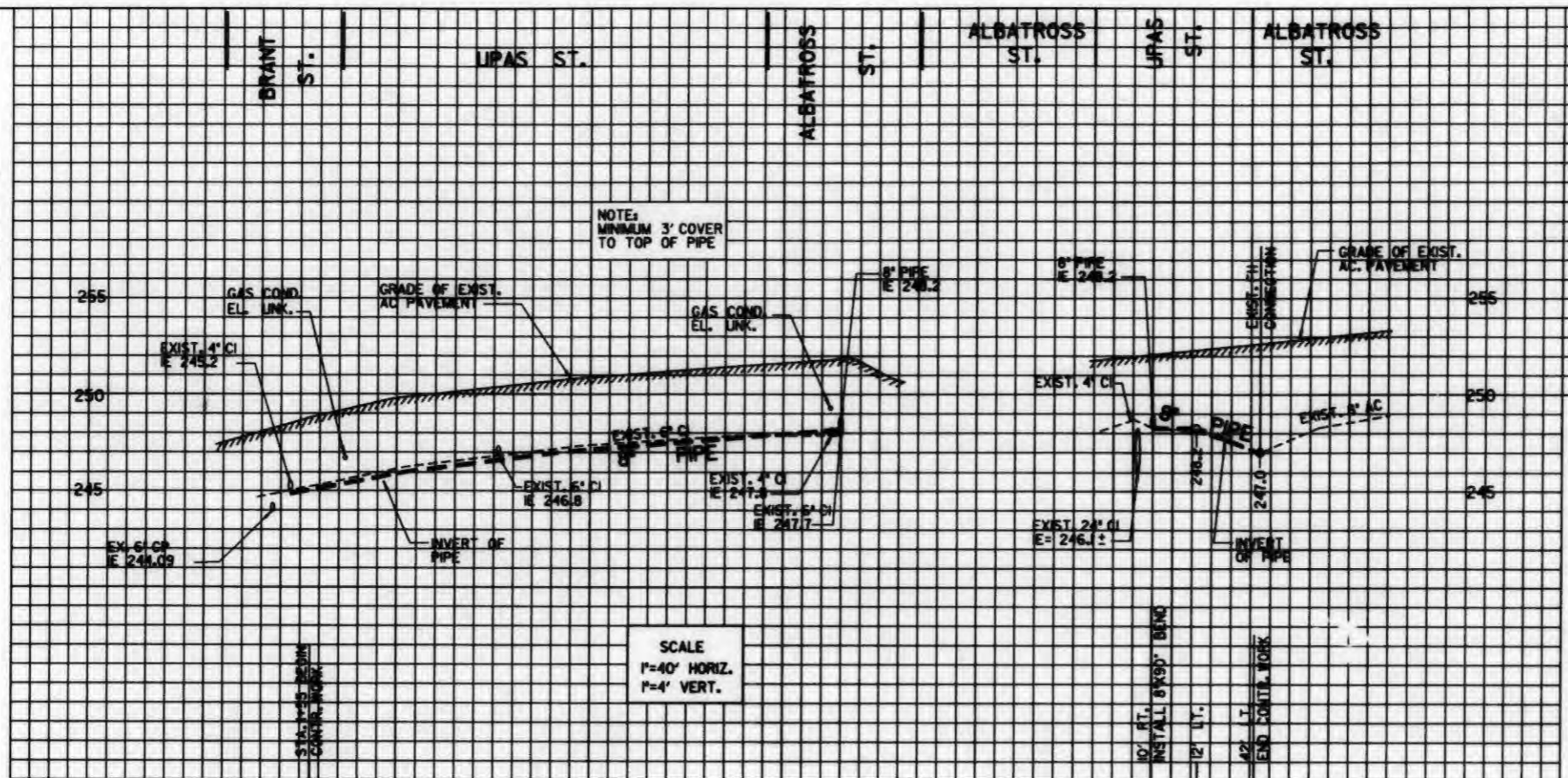
1- 8" VALVE RT. (F)
1- 8"X6" RED. RT. (F)
1- 6" ADAPTOR RT. (F,M,J)
CLOSE NEW VALVE RT.
(SEE DETAIL "B")

③ BY CITY FORCES
AHEAD OF CONTRACTOR
STA. 4+25 ±, 20' RT.
CUT AND PLUG (SYNCHRONIZE
W/VALVE CLOSING IN
STA. 4+30 ±, 42' LT. ON ④)
AFTER NEW MAIN HAS
BEEN ACCEPTED, MAKE
CONNECTION, OPEN VALVE RT.
(SYNCHRONIZE W/VALVE OPENING
IN STA. 4+30 ±, 42' LT. ON ④)
(SEE DETAIL "C")

BY CONTRACTOR
STA. 4+25 ±, 10' RT.
FURNISH AND INSTALL
1- 8" TEE (F)
1- 8" VALVE BK. (F)
1- 8" ADAPTOR BK. (M,J,F)
1- 8" VALVE RT. (F)
1- 8"X4" RED. RT. (F)
1- 4" ADAPTOR RT. (F,M,J)
CLOSE VALVE RT.
(SEE DETAIL "C")

④ BY CITY FORCES
AHEAD OF CONTRACTOR
STA. 4+30 ±, 42' LT.
CLOSE VALVE (SYNCHRONIZE
W/ CUT AND PLUG IN
STA. 4+25 ±, 20' RT. ON ③)
AFTER NEW MAIN HAS
BEEN ACCEPTED
REMOVE EXIST. 8"X6" RED.
MAKE CONNECTION
OPEN VALVE (SYNCHRONIZE
W/VALVE OPENING IN
STA. 4+25 ±, 10' RT. ON ③)
(SEE DETAIL "C")

BY CONTRACTOR
STA. 4+30 ±, 10' RT.
FURNISH AND INSTALL
1- 8" VALVE LT. (F)
1- 8" ADAPTOR LT. (F,M,J)
(SEE DETAIL "C")



SCALE
1"=40' HORIZ.
1"=4' VERT.

COORDINATE TABLE			
NO.	NORTHING	EASTING	DESCRIPTION
65	N21000.52	E178365.06	C INTERSECTION
66	N210090.51	E178370.06	8" TEE
67	N210090.29	E178470.06	8"X6" TEE
68	N210099.85	E178645.50	C INTERSECTION
69	N210089.92	E178650.06	8" TEE
70	N210089.90	E178655.06	8"X90" BEND
71	N210141.89	E178656.22	8" CONN. TO VALVE

PROPOSED PIPE DATA TABLE				
NO.	Δ/BEARING	RADIUS	LENGTH	REMARKS
1	N01°16'46"E	18'	18'	6" PIPE BY CITY
2	N89°52'42"W	10'	10'	8" PIPE BY CITY
3	N89°52'42"W	100'	100'	8" PIPE BY CONTRACTOR
4	N01°16'46"E	8'	8'	6" PIPE BY CITY
5	N89°52'42"W	180'	180'	8" PIPE BY CONTRACTOR
6	N89°52'42"W	4'	4'	SPOOL 8" PIPE BY CONTRACTOR
7	N01°16'46"E	42'	42'	8" PIPE BY CONTRACTOR
8	N01°16'46"E	10'	10'	8" PIPE BY CITY
9	N00°00'00"E	50'	50'	8" PIPE BY CONTRACTOR

REFERENCE NOTE:
100' SCALE MAP: 210-1716
GATE BOOK PG. F-19
THOMAS BROS. MAP BOOK PG. 1269
S.D.G. & E. N/A
GAS BOOK PG. 2-232, 2-240
PACIFIC BELL: N/A
COX CABLE: N/A

IMPROVEMENTS:
WATER: 592-L, 12308-4-D, 7504-W
2706-D, 22706-18-D
SEWER: 2487-L
STORM DRAIN:

BENCH MARK:
B.M. = NEBP UPAS AND ALBATROSS ST.
M.S.L. EL. 252.079'

FIELD NOTES:
WENTWORTH, 210-1716 W.O. 18021, MAR. 16, '89
REYNARD WAY AND BROOKES AVE.

RETIREMENT:
347.64' 6" CI YR. LINK.

HYDRAULIC GRADE LINE:
536

WATER & SEWER GROUP 486
UPAS ST.
BRANT ST. TO ALBATROSS ST.

CITY OF SAN DIEGO, CALIFORNIA
ENGINEERING AND CAPITAL PROJECTS DEPARTMENT
SHEET 18 OF 53 SHEETS

DATE: 5-7-88
FOR CITY ENGINEER: [Signature]
BY: [Signature] DATE: 5-27-88
ORIGINAL FS/PM

CONTROL CERTIFICATION
DATE STARTED: 8-2-88
DATE COMPLETED: 25842-18-D



CAUTION!!!
LOW OVERHEAD POWER
LINES IN THIS AREA

UPAS ST.

