

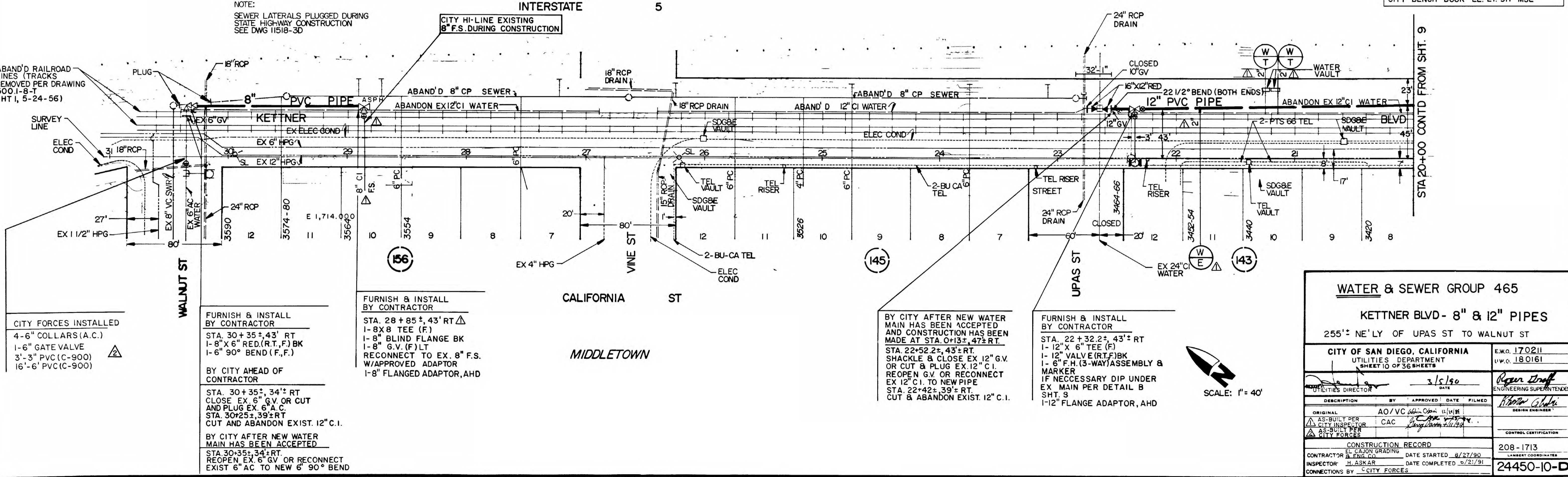
REFERENCES:
 THOMAS BROS. MAP P60 B4
 100' SCALE MAP 208-1713
 GATE BOOK F-20
 SDG & E
 GAS 2/121,170 4/1
 ELEC 60934-01,48000-01
 PACIFIC TEL: 184033

IMPROVEMENTS:
 SEWER 11518-3-D, 15063-2-D
 WATER 5930-L, 10881-4-D, 6499-W
 DRAINAGE 11518-4-D
 STREET & TRAFFIC 5001-B-T, 3HT, 1, 5-24-56

RETIREMENT:
 600' 12" C.I.

FIELD NOTES:
 O'NEIL, 206-1713, 2-5-87, WO:170211, 4 SHTS.

BENCH MARKS:
 S.E.B.P. LAUREL ST. & INDIA ST.,
 EL. 61.072 MSL
 N.W.B.P. LAUREL ST. & PACIFIC HWY.,
 EL. 13.776 MSL
 N.E.B.P. PACIFIC HWY. & WASHINGTON ST.,
 EL. 27.848 MSL
 CITY BENCH BOOK EL. 27.917 MSL



NOTE:
 SEWER LATERALS PLUGGED DURING
 STATE HIGHWAY CONSTRUCTION
 SEE DWG 11518-3D

ABAND'D RAILROAD
 LINES (TRACKS
 REMOVED PER DRAWING
 5001-B-T
 SHT 1, 5-24-56)

CITY FORCES INSTALLED
 4-6" COLLARS (A.C.)
 1-6" GATE VALVE
 3'-3" PVC (C-900)
 16'-6" PVC (C-900)

FURNISH & INSTALL BY CONTRACTOR
 STA. 30+35±, 43' RT
 1-8" X 6" RED. (R.T., F.) BK
 1-8" G.V. (F.) LT
 RECONNECT TO EX. 8" F.S.
 W/APPROVED ADAPTOR

BY CITY AHEAD OF CONTRACTOR
 STA. 30+35±, 34'± RT
 CLOSE EX. 6" G.V. OR CUT
 AND PLUG EX. 6" A.C.
 STA. 30+25±, 39'± RT
 CUT AND ABANDON EXIST. 12" C.I.

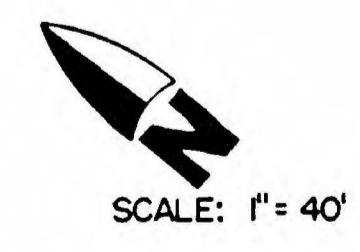
BY CITY AFTER NEW WATER MAIN HAS BEEN ACCEPTED
 STA. 30+35±, 34'± RT
 REOPEN EX. 6" G.V. OR RECONNECT
 EXIST. 6" AC TO NEW 6" 90° BEND

FURNISH & INSTALL BY CONTRACTOR
 STA. 28+85±, 43' RT
 1-8" X 8" TEE (F)
 1-8" BLIND FLANGE BK
 1-8" G.V. (F.) LT
 RECONNECT TO EX. 8" F.S.
 W/APPROVED ADAPTOR, AHD
 1-8" FLANGED ADAPTOR, AHD

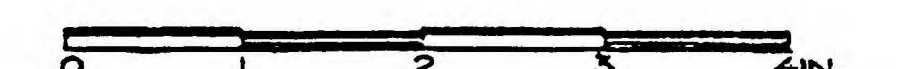
BY CITY AFTER NEW WATER MAIN HAS BEEN ACCEPTED AND CONSTRUCTION HAS BEEN MADE AT STA. 0+13±, 47'± RT.
 STA. 22+52.2±, 43'± RT.
 SHACKLE & CLOSE EX. 12" G.V.
 OR CUT & PLUG EX. 12" C.I.
 REOPEN G.V. OR RECONNECT
 EX. 12" C.I. TO NEW PIPE
 STA. 22+42±, 39'± RT.
 CUT & ABANDON EXIST. 12" C.I.

FURNISH & INSTALL BY CONTRACTOR
 STA. 22+32.2±, 43'± RT
 1-12" X 6" TEE (F)
 1-12" VALVE (R.T., F.) BK
 1-6" F.H. (3-WAY) ASSEMBLY &
 MARKER
 IF NECESSARY DIP UNDER
 EX. MAIN PER DETAIL B
 SHT. 9
 1-12" FLANGE ADAPTOR, AHD

WATER & SEWER GROUP 465	
KETTNER BLVD - 8" & 12" PIPES	
255'± NE'LY OF UPAS ST TO WALNUT ST	
CITY OF SAN DIEGO, CALIFORNIA UTILITIES DEPARTMENT SHEET 10 OF 36 SHEETS	
UTILITIES DIRECTOR	DATE
DESIGNER	DATE
ENGINEERING SUPERINTENDENT	DATE
CONSTRUCTION RECORD	DATE
CONTRACTOR & ENG. CO.	DATE STARTED
INSPECTOR	DATE COMPLETED
CONNECTIONS BY	CITY FORCES
E.W.O. 170211	U.W.O. 180161
208-1713	24450-10-D



SCALE: 1" = 40'



AS-BUILT

KETTNER BLVD.