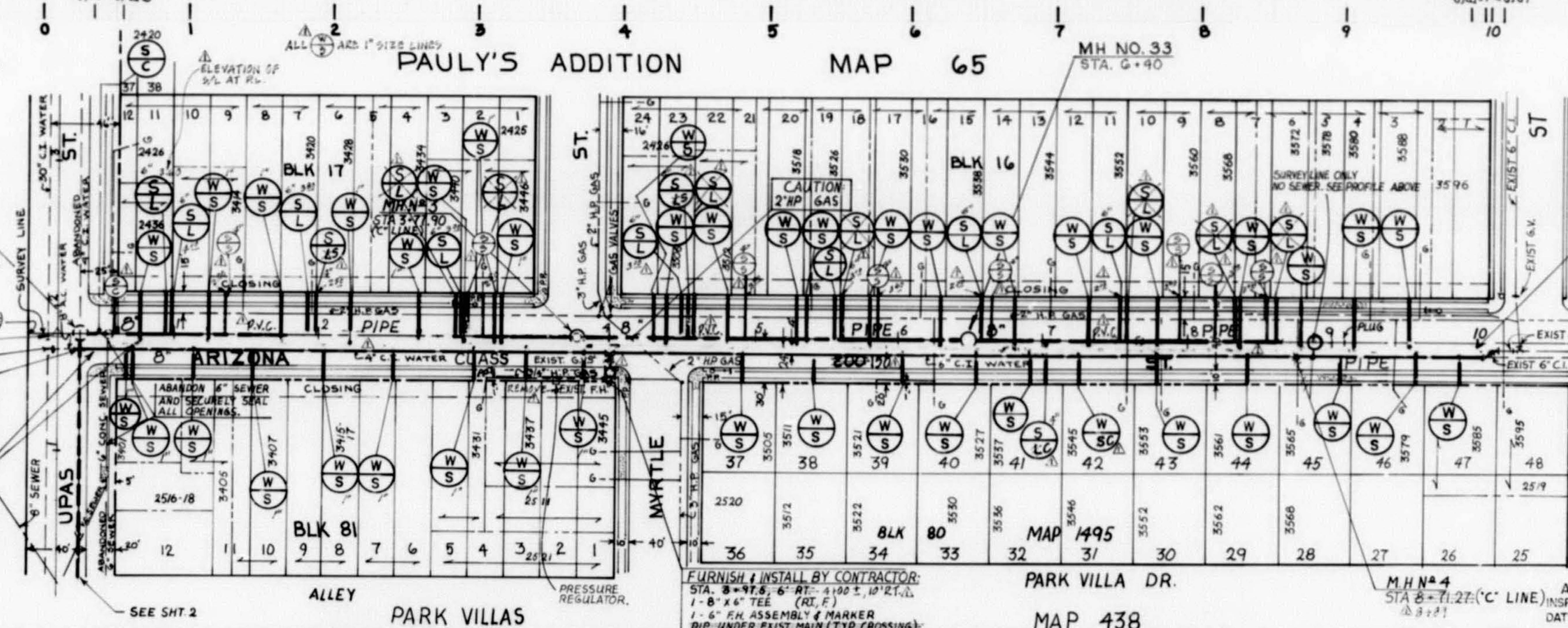


SEWER AND WATER PROFILES.  
SCALE:  
1" = 50' HORIZONTAL  
1" = 5' VERTICAL

BENCH MARK:  
N.W. COR. UPAS ST. AND ARIZONA ST.  
ELEV. 276.109 M.S.L.

Scale: 1" = 50'



**FIRST ORDER OF WORK FOR WATER MAIN:**  
BY CITY AFTER CONTRACTOR:  
STA. 0+00 TO 10+00  
CUT & ABANDON EXIST. 6" C.I. WATER MAIN  
CLOSE EXIST. 6" VALVE  
BY CITY AFTER NEW WATER MAIN HAS BEEN ACCEPTED:  
BY CITY:  
STA. 0+00 TO 10+00  
CONNECT TO EXIST. 8" AC AND 6" C.I. WATER MAIN  
BY CONTRACTOR:  
STA. 0+00 TO 10+00  
INSTALL 8" 45° BENDS (M.S.)  
SEE SHT. B

FIELD NOTES:  
CRAIG, 210-1725, 11-5-84, W.O. 147211, 6 SHTS.  
WATER: 574-L, 100 SCALE WATER MAP  
SEWER: 1324-L, 100 SCALE SEWER MAP  
ROAD: 12912-4-D  
GAS: 1124-B, 249-2 TO 283-284, 285  
RETIREMENT:  
74 FT. OF 6" CONC. SEWER PER 1324-L, 1923  
386 FT. OF 6" C.I. WATER  
1-6" R.H.  
S = SEWER STUB  
W = WATER MAIN

<b>SEWER AND WATER GROUP 70</b>	
ARIZONA ST. UPAS ST. TO DWIGHT ST.	
CITY OF SAN DIEGO, CALIFORNIA UTILITIES DEPARTMENT SHEET 3 OF 26 SHEETS	
APPROVED UTILITIES DIRECTOR	DATE
DESCRIPTION	BY APPROVED
ORIGINAL	BS/WR R. P. ...
AS BUILT	5/24/94 HW
CONSTRUCTION RECORD	DATE
CONTRACTOR	MUR-VIC CONST.
INSPECTOR	HANI ASSI
DATE STARTED	6-1-92
DATE COMPLETED	2-15-93
CONNECTIONS BY:	
E.O. 14176/14818 U.W.O. 8731/2061	ENGINEERING SUPERINTENDENT
DESIGN ENGINEER	
CONTROL CERTIFICATION	210-1725
LAMBERT COORDINATES	21842-3-D

AS BUILT

