

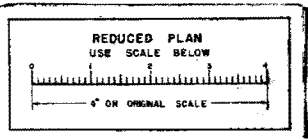
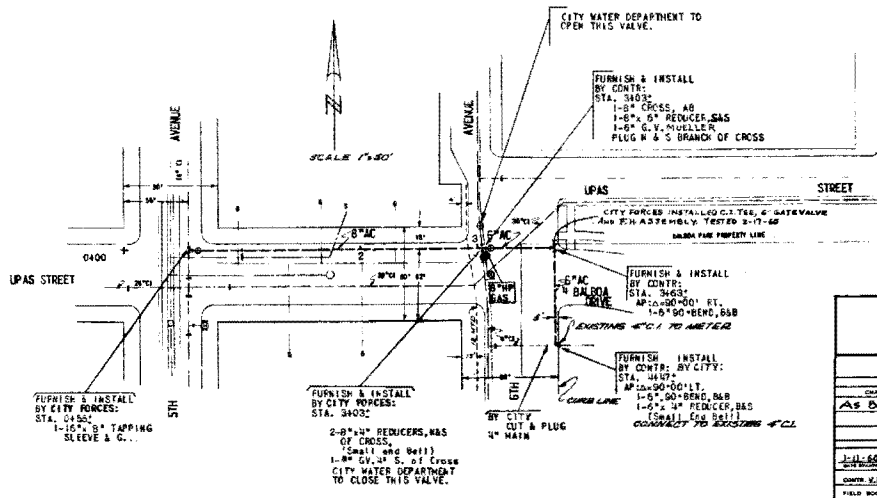
- WORK TO BE DONE**
- THE IMPROVEMENT CONSISTS OF THE FOLLOWING WORK TO BE DONE ACCORDING TO THESE PLANS AND SPECIFICATIONS, HERETO ATTACHED:
- THE CONSTRUCTION OF ASBESTOS CEMENT WATER MAINS AND APPURTENANCES AS SHOWN THUS:  $8" \text{ A.C. } \times \text{ } 6" \text{ A.C.}$
  - THE FURNISHING AND INSTALLING OF GALVANIZED IRON PIPE AS SHOWN THUS:  $\text{---}$
  - THE FURNISHING AND INSTALLING OF HOSE END BBS B RIBERS AS SHOWN THUS:  $\text{---}$
  - THE FURNISHING AND INSTALLING OF PRESSURE RELIEF VALVES AS SHOWN THUS:  $\text{---}$

ADDITIONAL WORK TO BE DONE SHOWN ON SHEET 1...

**STANDARD DRAWINGS**

702-EB, 208-WB, 212-WB, 240-WB, 231-WB, 238-WB, 243-WB, 402-WB, 224-WB, 261-P, 551-W

SCALE: 1"=50' HORIZ.  
1"=6' VERT.



BALBOA PARK SPRINKLER SYSTEM			MICROFILME
6TH AVENUE, LAUREL STREET, ET AL			APR--1953
CITY OF SAM DIEGO			WD NO. 21725
ENGINEERING DEPARTMENT			SHEET 2 OF 13 SHEETS
DATE	BY	APPROVAL	
AS BUILT	ONE 1950	<i>[Signature]</i>	
APPROVALS		APPROVALS	
PLANNING	DESIGN	ELECTRICAL	MECHANICAL
APPROVED	APPROVED	APPROVED	APPROVED
CITY ENGINEER		CITY ENGINEER	
J. J. MOFFITT & CO.		J. J. MOFFITT & CO.	
FIELD BOOK		FIELD BOOK	

WHAT