

THIS SHEET FOR ADDITIVE ALTERNATE NO. 1 ONLY.

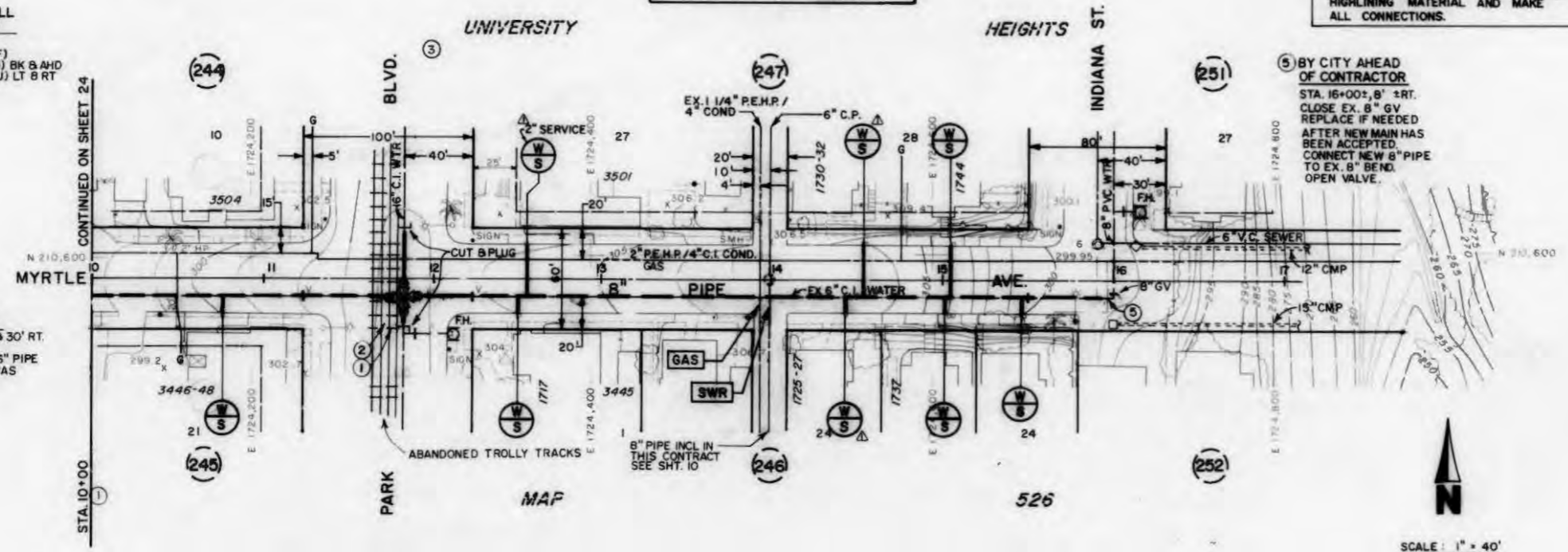
NOTE: MYRTLE AVE. SHALL BE HIGHLIGHTED BY CITY FORCES PRIOR TO BEGINNING OF CONSTRUCTION. CITY TO FURNISH HIGHLIGHTING MATERIAL AND MAKE ALL CONNECTIONS.

② FURNISH & INSTALL BY CONTRACTOR
 STA 11+83.70 RT.
 1- 8" x 16" CROSS (F)
 2- 8" VALVES (F, M, J) BK & AHD
 2- 16" VALVES (F, M, J) LT & RT
 10'- 16" PIPE RT.
 35'- 16" PIPE LT.

① BY CITY AHEAD OF CONTRACTOR
 STA 11 83 30' LT. & 30' RT.
 CUT & PLUG
 CONNECT TO NEW 16" PIPE
 AFTER NEW MAIN HAS BEEN ACCEPTED

⑤ BY CITY AHEAD OF CONTRACTOR
 STA 16+00±, 8' ± RT.
 CLOSE EX. 8" GV
 REPLACE IF NEEDED
 AFTER NEW MAIN HAS BEEN ACCEPTED.
 CONNECT NEW 8" PIPE TO EX. 8" BEND.
 OPEN VALVE.

- REFERENCES: THOMAS BROTHER MAP - PG-60
 100' SCALE MAP 210-1722
 GATE BOOK PAGE - 6-19
 S.D. GAS & ELECT. CO.
 GAS BOOK - 2, PG'S 200, 277
- IMPROVEMENTS:
 SEWER:
 WATER: 2414-L, 26328-5-D
 PAVING: 2414-L
- BENCH MARKS: (MEAN SEA LEVEL DATUM)
 B.M. * N.W.B.P. MYRTLE AVE & INDIANA ST., EL. 300.170
- FIELD NOTES:
 1. CROSS-SECTION 210-1719 LINE " * KELLEY, 3-27-86, W.O. 147125, SHT. OF 18
- RETIREMENTS:
 600' - 6" C.I. - YR. UNK.



AS BUILT DRAWING
 INSPECTOR: T. PALUSKY
 DATE: 9/18/98

SEWER AND WATER GROUP 55 MYRTLE AVE. PARK BLVD. TO INDIANA ST. ADDITIVE ALTERNATE NO. 1			
CITY OF SAN DIEGO, CALIFORNIA ENGINEERING AND CAPITAL PROJECTS DEPARTMENT		E.M.D. 649 (SEWER) INVESTIGATOR	
DEPUTY DIRECTOR		SECTION HEAD	
APPROVED BY	DATE	FILED	ASSOCIATE ENGINEER
AS BUILT 11/19/98 HW			
CONSTRUCTION RECORD		210-1722	
CONTRACTOR: P. ARTUKOVICH	DATE STARTED: 5/23/97	CONTRACT NUMBER	
INSPECTOR: T. PALUSKY	DATE COMPLETED: 7/25/98	CONTRACT VALUE	
CONNECTED BY:		25163-25-D	

AS-BUILT

MYRTLE AVENUE

FILMED FROM THE ORIGINAL. BEST QUALITY OBTAINABLE. EXCESSIVE GRAY BACKGROUND MAY CAUSE A POOR QUALITY REPRODUCTION.

