

PROPOSED PIPE DATA TABLE

NO.	Δ/BEARING	RADIUS	LENGTH	REMARKS
1	N36° 01' 24" W		28.52'	10" PIPE
2	N36° 01' 24" W		20.00'	10" PIPE
3	N36° 01' 24" W		19.01'	10" PIPE
4	N00° 10' 24" E		18.92'	10" PIPE
5	N00° 10' 24" E		343.20'	10" PIPE
6	N0° 36' 16" E		364.45'	10" PIPE

COORDINATE TABLE

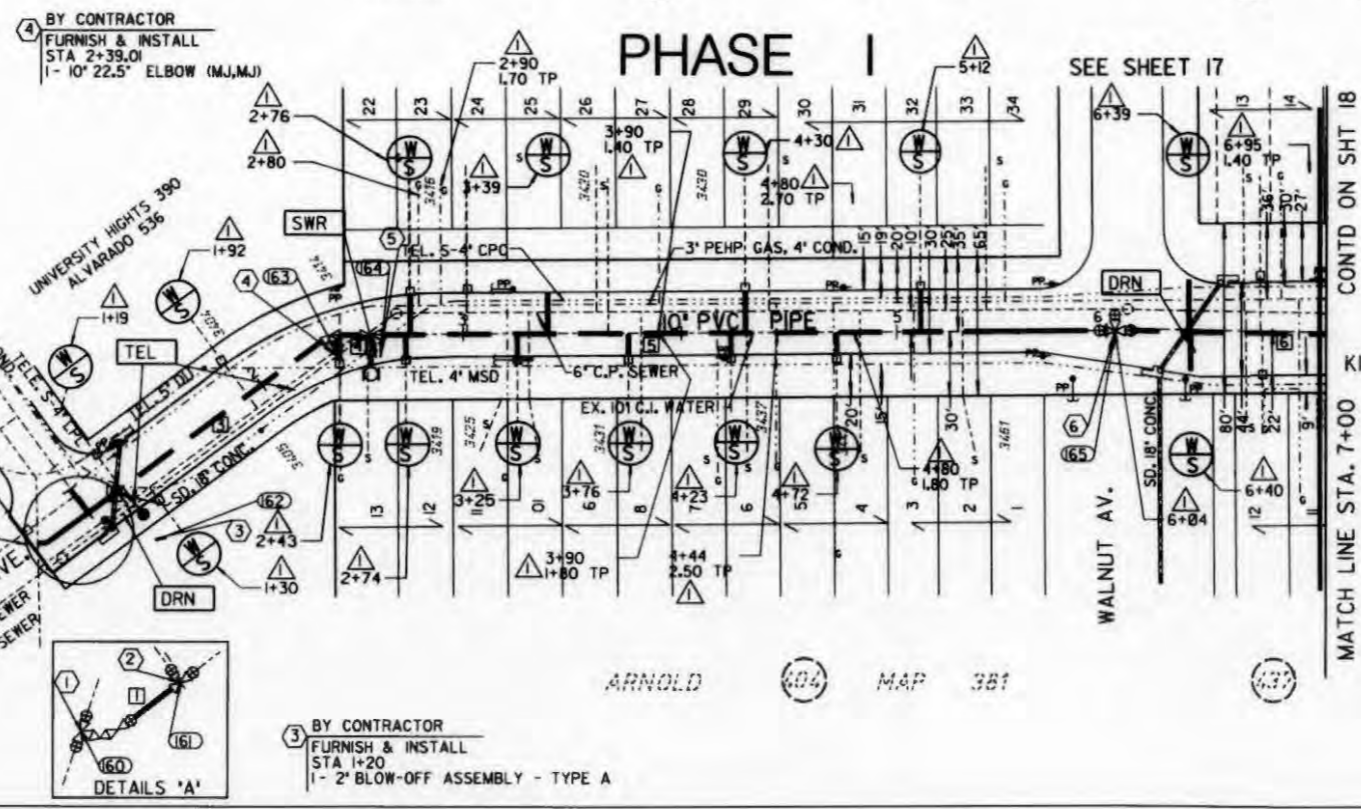
NO.	NORTHING	EASTING	DESCRIPTION
60	N210097.84	E1715955.00	24"X24"X10' TEE
61	N210121.53	E1715939.85	10"X10"X10' TEE
62	N210137.71	E1715928.10	2" BLOW - OFF
63	N210233.96	E1715858.10	10" 22.5" ELBOW
64	N210252.88	E1715858.15	10"X10"X6' TEE
65	N210598.97	E1715859.35	10"X8"X10' TEE

NOTE:  
INTERSECTION OF UPAS ST. & HORTON AV. TO KITE ST. SHALL BE HIGHLINED PRIOR TO START OF CONSTRUCTION. CITY TO PROVIDE ALL MATERIALS AND CITY FORCES TO MAKE ALL CONNECTIONS. BEGIN CONSTRUCTION OF PHASE I BEFORE PHASE II.

- BY CONTRACTOR  
AHEAD OF INSTALLATION OF NEW WATER MAIN  
STA. 0+71.48  
FURNISH  
1 - 24"X24"X10' TEE (F,F,F)  
2 - 24" BUTTERFLY VALVE, (CLASS 250B) (F,F)
- 1 - 10" VALVE (F,MJ) AHD  
1 - 10" 22.5" ELBOW (F,F)  
1 - 10" 11.25" ELBOW (F,F)  
2 - 24" COUPLINGS  
2 - 10" COUPLINGS  
2 - 24" FLANGE BY PLAN INSPool

- BY CITY FORCES  
STA. 0+71.48  
INSTALL  
1 - 24"X24"X10' TEE (F,F,F) LT,RT,AHD  
2 - 24" BUTTERFLY VALVE, (CLASS 250B) (F,F) LT,RT
- 1 - 10" VALVE (F,MJ) AHD  
1 - 10" 22.5" ELBOW (F,F)  
1 - 10" 11.25" ELBOW (F,F)  
2 - 24" COUPLINGS  
2 - 10" COUPLING  
2 - 24" FLANGE BY PLAN INSPool  
CLOSE 10" VALVE AHD

- BY CONTRACTOR  
AHEAD OF CONTRACTOR STA 1+00, 10' TO LT CUT & PLUG EX. 10" C.J.  
BY CITY FORCES  
AHEAD OF CONTRACTOR STA 1+00  
FURNISH & INSTALL  
1 - 10"X10"X10' TEE (M,J,F) BK,LT,AHD  
2 - 10" VALVE (F,MJ) LT,AHD
- BY CITY FORCES  
AFTER ACCEPTANCE OF NEW MAIN IN PHASE I, MAKE CONNECTION, CLOSE 10" VALVE LT



CAUTION!!!  
LOW OVERHEAD POWER LINES IN THIS AREA

- BY CONTRACTOR  
FURNISH & INSTALL  
STA. 2+39.01  
1 - 10" 22.5" ELBOW (M,J,MJ)

- BY CONTRACTOR  
FURNISH & INSTALL  
STA. 6+04  
1 - 10"X8"X10' TEE (F,F,F) BK,AHD,LT  
2 - 10" VALVE (F,MJ) BK AHD  
1 - 8" VALVE (F,MJ) LT

- BY CONTRACTOR  
FURNISH & INSTALL  
STA. 6+04  
1 - 10"X8"X10' TEE (F,F,F) BK,AHD,LT  
2 - 10" VALVE (F,MJ) BK AHD  
1 - 8" VALVE (F,MJ) LT

- BY CONTRACTOR  
FURNISH & INSTALL  
STA 1+20  
1 - 2" BLOW-OFF ASSEMBLY - TYPE A

- REFERENCE:  
BENCH MARK: NWBP KITE & PUTERBAUGH MSL NGVD29  
EL = 266.63  
FIELD NOTES: BROOKS, 9/04/97, W.OJ7471
- WATER: 2574-L  
SEWER: 208-D  
STORM DRAIN: 2572-L  
GAS: 2-173,179  
ELECTRIC: 210-1713  
CABLE TV: ---  
TELEPHONE: ---  
IMPROVEMENTS: 1045-L  
WATER FIELD BOOK: F195  
SEWER FIELD BOOK: F195  
100' SCALES: 210-1713  
THOMAS BROS.: 1268
- RETIREMENTS:  
600" 10" C.J. WATER (1964 YEAR INSTALLED)

**PHASE I**  
SEWER and WATER GROUP JOB 674  
HORTON AVENUE / KITE STREET  
STA. 0+71.48 TO STA. 7+00

CITY OF SAN DIEGO, CALIFORNIA  
ENGINEERING AND CAPITAL PROJECTS DEPARTMENT  
SHEET 16 OF 24 SHEETS

DATE: 4-7-99

CONTRACTOR: [Signature]  
INSPECTOR: [Signature]

DATE STARTED: 1-98  
DATE COMPLETED: 9-98

PROJECT NUMBER: 28899-16-D

AS-BUILT

HORTON AV/KITE ST. STA. 0+71.48 TO 7+00