


LIVE WELL SAN DIEGO

Presentation to
City of San Diego Commission on Gang Prevention and Intervention
Barbara Jiménez , Deputy Director, Central & South Regions
County of San Diego, Health and Human Services Agency
September 18, 2014



1



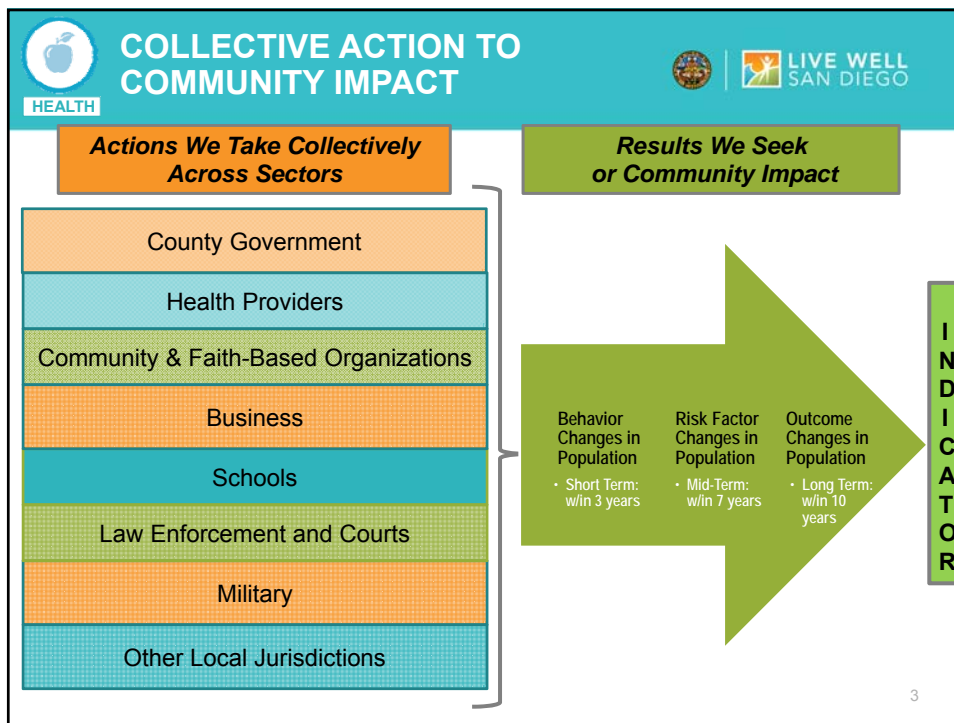
LIVE WELL SAN DIEGO

Building Better Health

Living Safely

Thriving

2



RECOGNITION OF PARTNERS COUNTYWIDE

LIVE WELL SAN DIEGO



Nearly 50 Recognized Partners already have the potential to directly improve the quality of life for almost two million residents in San Diego County, reflecting the power of working together for a collective impact. Included among them are:

- **The largest city in the County:** City of San Diego
- **The largest elementary school district in the State (K through grade 6):** Chula Vista Elementary School District
- **The largest public health care district in the State:** Palomar Health
- **The largest chamber of commerce on the west coast:** San Diego Regional Chamber

Logos for City of San Diego, Chula Vista Elementary School District, Palomar Health, and San Diego Regional Chamber are shown.

Four photographs at the bottom show groups of people receiving awards or certificates.

HEALTH AND HUMAN SERVICES AGENCY CENTRAL REGION





Agency-wide Programs within Central Region:

- Access, Access2Health Customer Service Call Centers
- Homeless Services Coordinator

Programs in Central Region:


- **Child Welfare Services** - Emergency Response Services, Court Intervention Services, Voluntary Services, Continuing Services and Intensive Family Preservation Program
 - Two sites: 1255 Imperial Avenue and 4370 54th Street
- **Public Health Centers** - Immunization Clinic, STD Clinic, TB treatment and prevention, Nurse Family Partnership Program
 - Two sites: 5202 University Avenue and 3177A Oceanview Blvd.
- **Family Resource Centers** - CalWORKs, CalFresh, Medi-Cal, General Relief
 - Four sites:
 - Southeast: 4588 Market Street, San Diego 92102
 - Northeast: 5001 73rd Street, San Diego 92115
 - Centre City: 1255 Imperial Avenue, San Diego 92101
 - Metro: 1130 10th Avenue, San Diego 92101




The county of San Diego is divided into six Health and Human Services Agency regions based on zip code.

5

LIVE WELL SAN DIEGO CENTRAL REGION LEADERSHIP TEAM




Live Well Regional Leadership Teams tie together the collective efforts of community groups and stakeholders in each region and provide a central point for planning and organizing collaborative action.



```

graph LR
    CLT[Central Region Leadership Team] --- HW[Health Workgroup]
    CLT --- TA[Tobacco Ad Hoc]
    CLT --- IE[Intergenerational Efforts]
    CLT --- SEW[Safety/Built Environment Workgroup]
    
    HW --- HW1[Implement culturally appropriate work-site wellness policies]
    HW --- HW2[Build collaboration between organizations to bridge the gap between access and care]
    
    TA --- TA1[Access to healthy foods]
    TA --- TA2[Reduce access and exposure to, and use of, tobacco products]
    
    SEW --- SEW1[Safe Routes to Safe Places (Safe Passage and Safe Routes to Schools)]
    SEW --- SEW2[Create safer places (Crime Prevention Through Environmental Design/Safe Parks)]
    SEW --- SEW3[Promote safer neighborhoods (includes Crime Free Multi-Housing)]
    
```

BUILDING BETTER HEALTH IN CENTRAL REGION







- Access to quality and efficient care



- Active living




- Healthy Eating



- Stop tobacco and other drug use

7

LIVING SAFELY IN CENTRAL REGION






- Residents are *protected* from crime and abuse




- Neighborhoods are *safe* to live, work and play




- Communities are *resilient* to disaster and emergencies

8

THRIVING IN CENTRAL REGION



*Currently under development,
this strategy is about
promoting a region in which
residents can enjoy the highest
quality of life focusing on
economic and environmental
vitality*



The screenshot shows the homepage of the Live Well San Diego website. At the top, there is a navigation bar with the 'LIVE WELL SAN DIEGO' logo and links for 'ABOUT', 'NEWS & SUCCESS STORIES', 'CALENDAR', 'PARTNERS', 'START LIVING WELL', 'MAKE AN IMPACT', and 'JOIN US'. A 'SHARE' button is also visible. Below the navigation bar is a large hero image of a woman and a child playing with a dog in a park. The text 'STRIVING TO CREATE A COUNTY THAT IS HEALTHY, SAFE AND THRIVING.' is overlaid on the image, with a 'JOIN US' button below it. A paragraph of text describes the organization's mission: 'Live Well San Diego is an initiative of the County of San Diego to improve health and wellness for all residents. It represents a shared vision that can only be accomplished through collaboration across partners from every sector. This vision calls on every resident to take action to improve their own health, safety and well-being, as well as that of their families and neighbors.' Below this are three main content sections: 'START LIVING WELL' with a 'Read More' button, 'NEWS AND SUCCESS STORIES' with a 'Read More' button, and 'MAKE A PROMISE TO LIVE WELL' with a 'Share' button. A small grid of photos is located to the right of the 'MAKE A PROMISE' section. At the bottom, a teal banner contains the text 'Website: LIVEWELLSD.ORG' and a page number '10'.