

**GENERAL NOTES**

- APPROVAL OF THESE PLANS BY THE CITY ENGINEER DOES NOT AUTHORIZE ANY WORK TO BE PERFORMED UNTIL A PERMIT HAS BEEN ISSUED.
- THE CONTRACTOR SHALL BE RESPONSIBLE FOR SURVEY MONUMENTS AND/OR VERTICAL CONTROL BENCHMARKS WHICH ARE DISTURBED OR DESTROYED BY CONSTRUCTION. A LAND SURVEYOR MUST FIELD LOCATE, REFERENCE, AND/OR PRESERVE ALL HISTORICAL OR CONTROLLING MONUMENTS. IF DESTROYED, SUCH MONUMENTS SHALL BE REPLACED WITH APPROPRIATE MONUMENTS BY A LAND SURVEYOR, A CORNER RECORD OR RECORD OF SURVEY, AS APPROPRIATE SHALL BE FILED AS REQUIRED BY THE PROFESSIONAL LAND SURVEYORS ACT. IF ANY VERTICAL CONTROL IS TO BE DISTURBED OR DESTROYED, THE CITY OF SAN DIEGO FIELD SURVEY SECTION MUST BE NOTIFIED, IN WRITING, AT LEAST 3 DAYS PRIOR TO THE CONSTRUCTION. THE CONTRACTOR WILL BE RESPONSIBLE FOR THE COST OF REPLACING ANY VERTICAL CONTROL BENCHMARKS DESTROYED BY THE CONSTRUCTION.
- IMPORTANT NOTICE: SECTION 4216 OF THE GOVERNMENT CODE REQUIRES A DIG ALERT IDENTIFICATION NUMBER BE ISSUED BEFORE A "PERMIT TO EXCAVATE" WILL BE VALID. FOR YOUR DIG ALERT I.D. NUMBER, CALL UNDERGROUND SERVICE ALERT, TOLL FREE 1-800-422-4133, TWO DAYS BEFORE YOU DIG.
- CONTRACTOR SHALL IMPLEMENT AN EROSION AND SEDIMENT CONTROL PROGRAM DURING THE PROJECT GRADING AND/OR CONSTRUCTION ACTIVITIES. THE PROGRAM SHALL MEET ALL APPLICABLE REQUIREMENTS OF THE STATE WATER RESOURCE CONTROL BOARD AND THE CITY OF SAN DIEGO MUNICIPAL CODE AND STORM WATER STANDARDS MANUAL.
- "PUBLIC IMPROVEMENT SUBJECT TO DESUETUDE OR DAMAGE." IF REPAIR OR REPLACEMENT OF SUCH PUBLIC IMPROVEMENTS IS REQUIRED, THE OWNER SHALL OBTAIN THE REQUIRED PERMITS FOR WORK IN THE PUBLIC RIGHT-OF-WAY, SATISFACTORY TO THE PERMIT- ISSUING AUTHORITY.
- PRIOR TO ANY DISTURBANCE TO THE SITE, EXCLUDING UTILITY MARK-OUTS AND SURVEYING, THE CONTRACTOR SHALL MAKE ARRANGEMENTS FOR A PRE-CONSTRUCTION MEETING WITH THE CITY OF SAN DIEGO FIELD ENGINEERING DIVISION (658) 627-3200.
- DEVIATIONS FROM THESE SIGNED PLANS WILL NOT BE ALLOWED UNLESS A CONSTRUCTION CHANGE IS APPROVED BY THE CITY ENGINEER OR THE CHANGE IS REQUIRED BY THE CITY INSPECTOR.
- AS-BUILT DRAWINGS MUST BE SUBMITTED TO THE RESIDENT ENGINEER PRIOR TO ACCEPTANCE OF THIS PROJECT BY THE CITY OF SAN DIEGO.
- THE AREA WHICH IS DEFINED AS A NON GRADING AREA AND WHICH IS NOT TO BE DISTURBED SHALL BE STAKED PRIOR TO START OF THE WORK. THE PERMIT APPLICANT AND ALL OF THEIR REPRESENTATIVES OR CONTRACTORS SHALL COMPLY WITH THE REQUIREMENTS FOR PROTECTION OF THIS AREA AS REQUIRED BY ANY APPLICABLE AGENCY. ISSUANCE OF THE CITY'S GRADING PERMIT SHALL NOT RELIEVE THE APPLICANT OR ANY OF THEIR REPRESENTATIVES OR CONTRACTORS FROM COMPLYING WITH ANY STATE OR FEDERAL REQUIREMENTS BY AGENCIES INCLUDING BUT NOT LIMITED TO CALIFORNIA REGIONAL WATER QUALITY CONTROL BOARD, CALIFORNIA DEPARTMENT OF FISH AND GAME. COMPLIANCE MAY INCLUDE OBTAINING PERMITS, OTHER AUTHORIZATIONS, OR COMPLIANCE WITH MANDATES BY ANY APPLICABLE STATE OR FEDERAL AGENCY.

**GROUND WATER DISCHARGE**

- ALL GROUND WATER EXTRACTION AND SIMILAR WASTE DISCHARGES TO SURFACE WATER NOT TRIBUTARY TO THE SAN DIEGO BAY ARE PROHIBITED UNTIL IT CAN BE DEMONSTRATED THAT THE OWNER HAS APPLIED AND OBTAINED AUTHORIZATION FROM THE STATE OF CALIFORNIA VIA AN OFFICIAL "ENROLLMENT LETTER" FROM THE REGIONAL WATER QUALITY CONTROL BOARD IN ACCORDANCE WITH THE TERMS, PROVISIONS AND CONDITIONS OF STATE ORDER NO. R9-2009-0002 NPDES CAG919002.
- THE ESTIMATED MAXIMUM DISCHARGE RATES MUST NOT EXCEED THE LIMITS SET IN THE OFFICIAL "ENROLLMENT LETTER" FROM THE REGIONAL BOARD UNLESS PRIOR NOTIFICATION AND SUBSEQUENT AUTHORIZATION HAS BEEN OBTAINED, AND DISCHARGE OPERATIONS MODIFIED TO ACCOMMODATE THE INCREASED RATES.
- ALL GROUND WATER EXTRACTIONS AND SIMILAR WASTE DISCHARGES TO SURFACE WATERS NOT TRIBUTARY TO THE SAN DIEGO BAY ARE PROHIBITED UNTIL IT CAN BE DEMONSTRATED THAT THE OWNER HAS APPLIED AND OBTAINED AUTHORIZATION FROM THE STATE OF CALIFORNIA VIA OFFICIAL "ENROLLMENT LETTER" FROM THE REGIONAL WATER QUALITY CONTROL BOARD IN ACCORDANCE WITH THE TERMS, PROVISIONS AND CONDITIONS OF STATE ORDER NO. R9-2007-0034 NPDES NO. CAG919001.

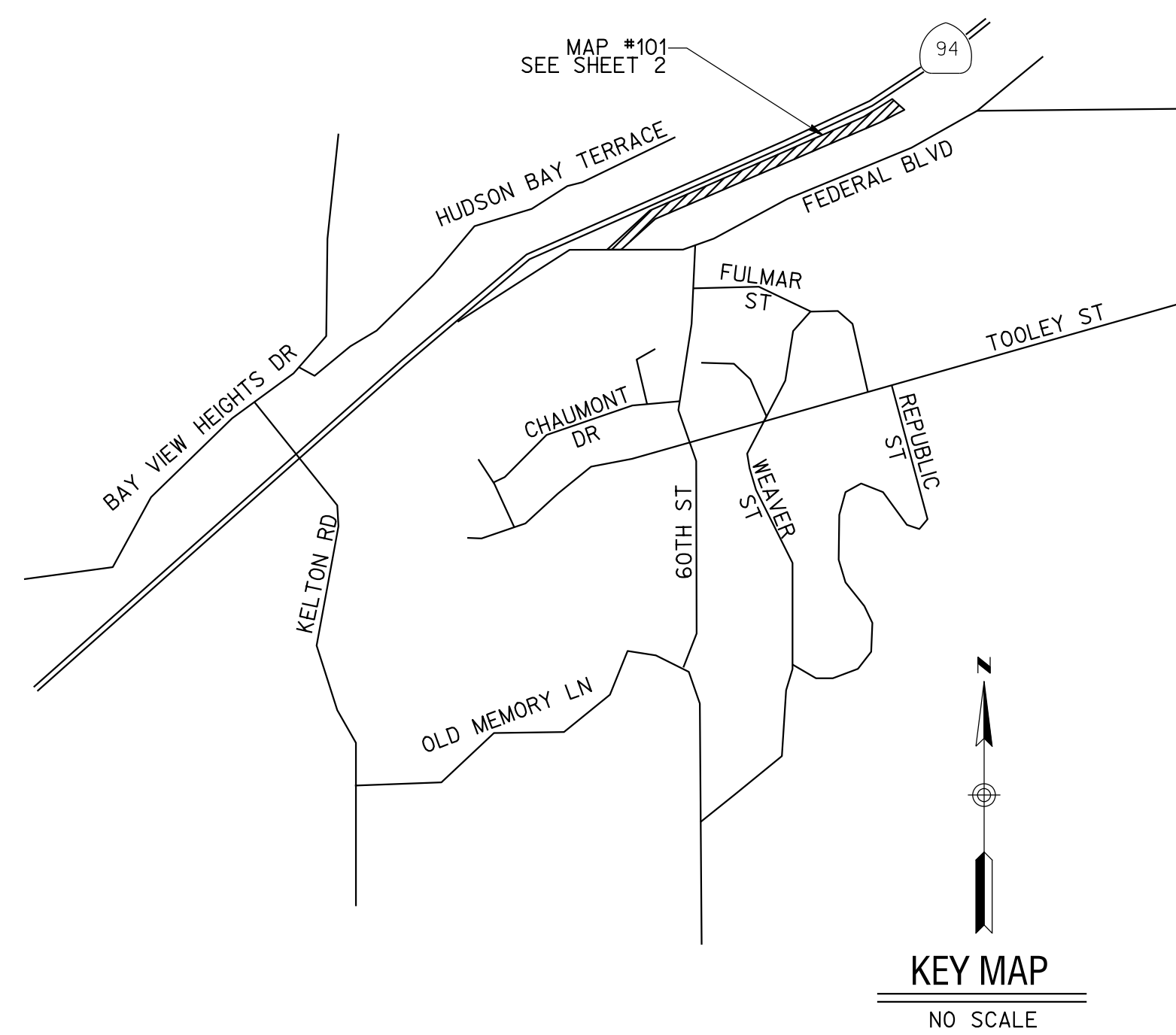
**SHEET INDEX**

TITLE SHEET	SHEET 1
MAINTENANCE PLAN	SHEET 2
MAINTENANCE METHODOLOGIES AND BMP NOTES	SHEET 3
MASTER MAINTENANCE PROGRAM (MMP) PROTOCOL REQUIREMENTS AND PEIR ENVIRONMENTAL MITIGATION MEASURES	SHEET 4

**REFERENCE DRAWINGS**

- GRADING PLAN FOR ENCANTO INDUSTRIAL PARK CITY OF SAN DIEGO DWG NO. 14482-D
- PLANS FOR THE IMPROVEMENTS IN AND ADJACENT TO ENCANTO INDUSTRIAL PARK, CITY OF SAN DIEGO DWG NO. 14482-D
- PLANS FOR THE IMPROVEMENT OF FEDERAL BLVD. BETWEEN 60TH STREET & STATE HIGHWAY 94, CITY OF SAN DIEGO DWG NO. 20039-D

**MAINTENANCE PLANS FOR:  
SOUTH CHOLLAS CREEK CHANNEL MMP MAP#101**



**TOPOGRAPHY SOURCE**

CITY OF SAN DIEGO SANGIS 2014 2 FOOT CONTOURS, NAVD88

**BENCHMARK**

BRASS PLUG SOUTHEAST CORNER FEDERAL BLVD. COUNTY & MALLARD ST. ELEV. 295.989 M.S.L. DATUM

**STORM WATER PROTECTION NOTES**

- THIS PROJECT IS SUBJECT TO MUNICIPAL STORM WATER PERMIT ORDER NO. R920070001; AND RISK LEVEL/TYPE: CHECK ONE BELOW
  - WPCP
  - CGP RISK LEVEL 1
  - CGP RISK LEVEL 2
  - CGP RISK LEVEL 3
  - CGP LUP TYPE 1
  - CGP LUP TYPE 2
  - CGP LUP TYPE 3
- WQID NO: NOT APPLICABLE
- CHECK ONE
  - THIS PROJECT WILL EXCEED THE MAXIMUM DISTURBED AREA LIMIT, THEREFORE A WEATHER TRIGGERED ACTION PLAN (WTAP) IS REQUIRED.
  - THIS PROJECT WILL FOLLOW PHASED GRADING NOT TO EXCEED FIVE (5) ACRES PER PHASE.
  - NOT APPLICABLE
- THE CONTRACTOR SHALL COMPLY WITH THE REQUIREMENTS OF THE WPCP OR SWPPP AS APPLICABLE.
- WATERSHED: PUEBLO SAN DIEGO
- HYDROLOGIC SUB AREA NAME: CHOLLAS
- HYDROLOGIC SUB AREA NUMBER: 908.22

WATER POLLUTION CONTROL PLAN FOR SOUTH CHOLLAS CREEK CHANNEL MAINTENANCE PROJECT PREPARED BY:  
McGRATH CONSULTING  
PO BOX 2488  
EL CAJON, CA. 92021  
(619) 443-3811

**DECLARATION OF RESPONSIBLE CHARGE**

I HEREBY DECLARE THAT I AM THE ENGINEER OF WORK FOR THIS PROJECT, THAT I HAVE EXERCISED RESPONSIBLE CHARGE OVER THE DESIGN OF THE PROJECT AS DEFINED IN SECTION 6703 OF THE BUSINESS AND PROFESSIONS CODE AND THAT THE DESIGN IS CONSISTENT WITH CURRENT STANDARDS.

I UNDERSTAND THAT THE CHECK OF PROJECT DRAWINGS AND SPECIFICATIONS BY THE CITY OF SAN DIEGO IS CONFINED TO A REVIEW ONLY AND DOES NOT RELIEVE ME, AS ENGINEER OF WORK, OF MY RESPONSIBILITIES FOR PROJECT DESIGN.



**RICK** ENGINEERING COMPANY  
5620 FRIARS ROAD  
SAN DIEGO, CA 92110  
619-291-0707  
(FAX) 619-291-4165

CARSON P. EDGINGTON R.C.E. NO. 76519 DATE

**WORK TO BE DONE**

THE IMPROVEMENTS CONSIST OF THE FOLLOWING WORK TO BE DONE ACCORDING TO THESE PLANS AND THE SPECIFICATIONS AND STANDARD DRAWINGS OF THE CITY OF SAN DIEGO.

MAINTENANCE OF CONCRETE & EARTHENED CHANNELS TO REMOVE ACCUMULATED SEDIMENT AND OTHER DEBRIS

DOCUMENT NO.	DESCRIPTION
PITS070112-01	STANDARD SPECIFICATIONS FOR PUBLIC WORKS CONSTRUCTION (GREENBOOK), 2012 EDITION
PITS070112-02	CITY OF SAN DIEGO STANDARD SPECIFICATIONS FOR PUBLIC WORKS CONSTRUCTION (WHITEBOOK), 2012 EDITION
PITS070112-04	CALIFORNIA DEPARTMENT OF TRANSPORTATION MANUAL OF UNIFORM TRAFFIC CONTROL DEVICES, 2012 EDITION
PITS070112-06	CALIFORNIA DEPARTMENT OF TRANSPORTATION U.S. CUSTOMARY STANDARD SPECIFICATIONS, 2010 EDITION
STANDARD DRAWINGS	DESCRIPTION
DOCUMENT NO.	CITY OF SAN DIEGO STANDARD DRAWINGS FOR PUBLIC WORKS CONSTRUCTION, 2012 EDITION
PITS070112-03	CALIFORNIA DEPARTMENT OF TRANSPORTATION U.S. CUSTOMARY STANDARD PLANS, 2010 EDITION
PITS070112-05	CALIFORNIA STORMWATER QUALITY ASSOCIATION, STORMWATER BEST MANAGEMENT PRACTICE HANDBOOK PORTAL: CONSTRUCTION, JANUARY 2015
CASQA MANUAL	

**LEGEND**

EXISTING IMPROVEMENTS ITEM	SYMBOL
EXIST. CONTOURS	---
EXIST. LOT LINE	□
EXIST. CURB INLET	SD
EXIST. STORM DRAIN MAIN	S
EXIST. SEWER MAIN	W
EXIST. WATER MAIN	---
SEDIMENT AND VEGETATION REMOVAL	--- (with wavy lines)
VEGETATION MAINTENANCE ONLY	--- (with downward arrows)
ACCESS & LOADING AREA	--- (with cross-hatch)
STAGING AREA	--- (with diagonal lines)

**STORM WATER MANAGEMENT BMPs**

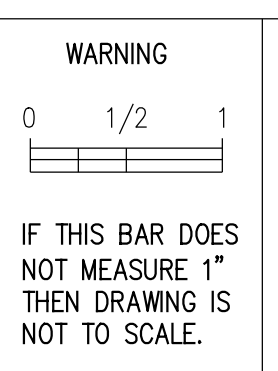
ITEM	SYMBOL
STREET SWEEPING AND VACUUMING DAILY	SEE CASQA MANUAL <b>SE-7</b>
SANDBAG BARRIER	SEE CASQA MANUAL <b>SE-8</b>
SCHEDULING	SEE CASQA MANUAL <b>EC-1</b>
PRESERVE EXISTING VEGETATION	SEE CASQA MANUAL <b>EC-2</b>
GRAVEL OR SAND BAG BARRIERS	SEE CASQA MANUAL <b>SE-6</b> <b>SE-8</b>
FIBER ROLLS OR STRAW WATTLES	SEE CASQA MANUAL <b>SE-5</b>
DIVERT RUN-ON FROM SURROUNDING AREAS	SEE CASQA MANUAL <b>EC-9</b> <b>SE-5</b> <b>SE-6</b> <b>SE-13</b>
CHECK DAMS	SEE CASQA MANUAL <b>SE-4</b>
SOIL PREVENTION AND CONTROL	SEE CASQA MANUAL <b>WM-4</b>
SOIL WASTE MANAGEMENT	SEE CASQA MANUAL <b>WM-5</b>
LIQUID WASTE MANAGEMENT	SEE CASQA MANUAL <b>WM-10</b>
SANITARY WASTE MANAGEMENT	SEE CASQA MANUAL <b>WM-9</b>
STOCKPILED WASTE MANAGEMENT	SEE CASQA MANUAL <b>WM-3</b>
MATERIAL STORAGE	SEE CASQA MANUAL <b>WM-1</b>
MATERIAL HANDLING	SEE CASQA MANUAL <b>WM-2</b>
VEHICLE AND EQUIPMENT FUELING	SEE CASQA MANUAL <b>NS-9</b>
ILLCIT CONNECTION / DISCHARGE CONTROL	SEE CASQA MANUAL <b>NS-6</b>
WATER CONSERVATION PRACTICE	SEE CASQA MANUAL <b>NS-1</b>
DEWATERING OPERATIONS	SEE CASQA MANUAL <b>NS-2</b>
WIND EROSION CONTROL	SEE CASQA MANUAL <b>WE-1</b>

(NOT ALL WILL BE GRAPHICALLY ILLUSTRATED WITHIN THIS SITE MAP)

CONSTRUCTION SITE STORM WATER PRIORITY: LOW

<b>TITLE SHEET FOR:</b> SOUTH CHOLLAS CREEK CHANNEL MMP MAP #101			
<b>CITY OF SAN DIEGO, CALIFORNIA</b> TRANSPORTATION AND STORMWATER DEPARTMENT SHEET 1 OF 4 SHEETS			I.O. NO. _____ P.T.S. NO. _____
FOR CITY ENGINEER		DATE	V.T.M.
DESCRIPTION	BY	APPROVED	DATE
ORIGINAL	REC		
			XXXX-XXXX
			NAD83 COORDINATES
			XXX-XXXX LAMBERT COORDINATES
AS-BUILTS			
CONTRACTOR		DATE STARTED	
INSPECTOR		DATE COMPLETED	

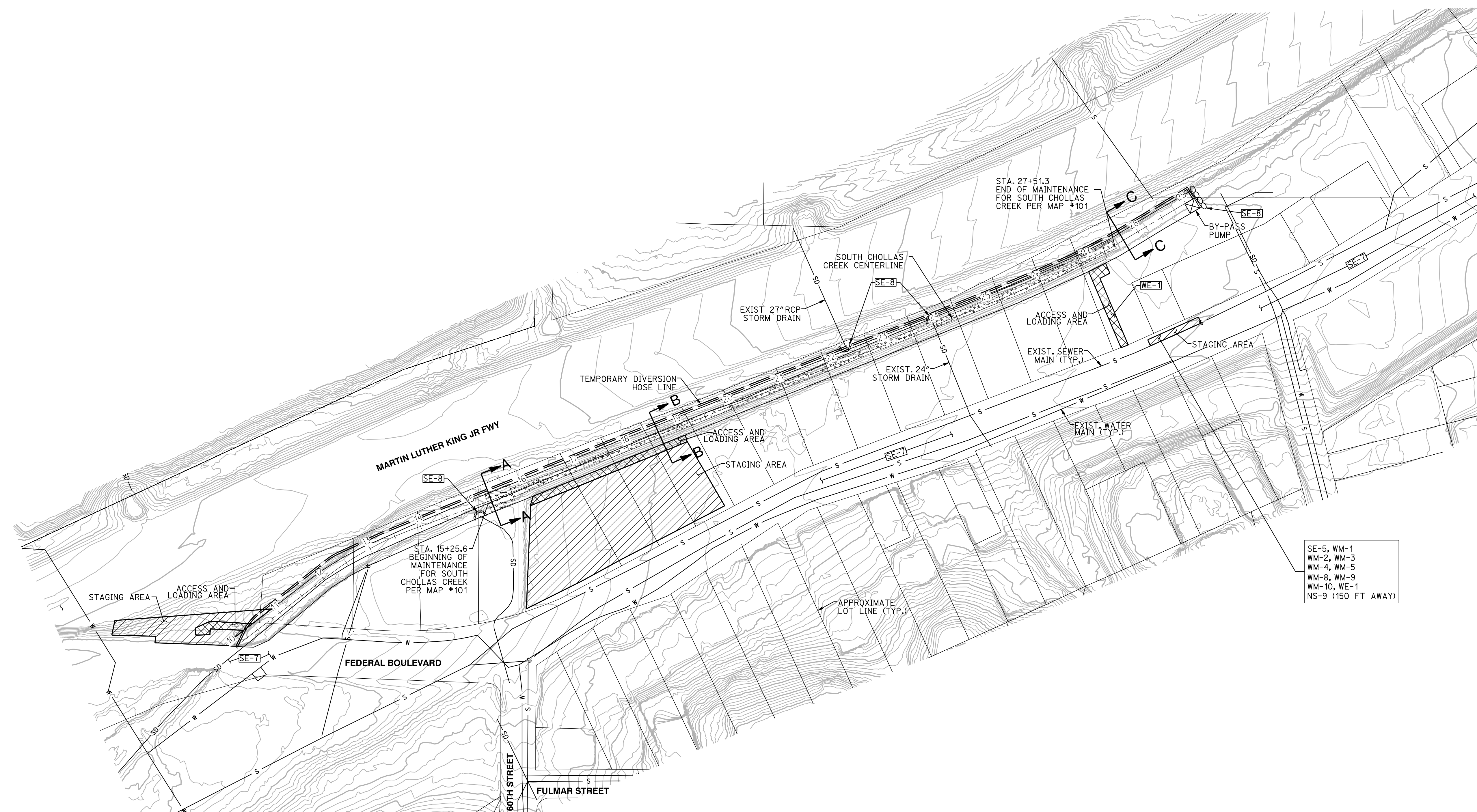
CONSTRUCTION CHANGE TABLE			
CHANGE	DATE	EFFECTED OR ADDED SHEET NUMBERS	APPROVAL NO.



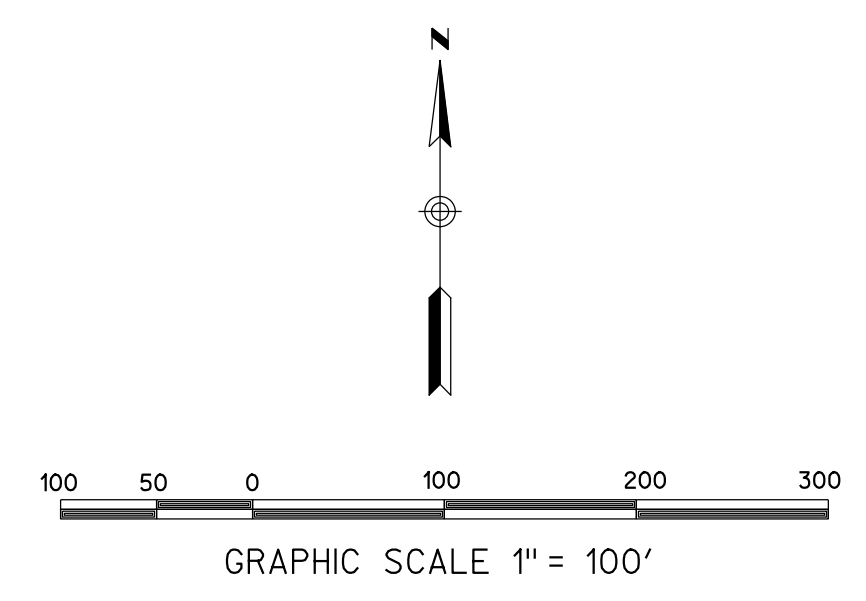
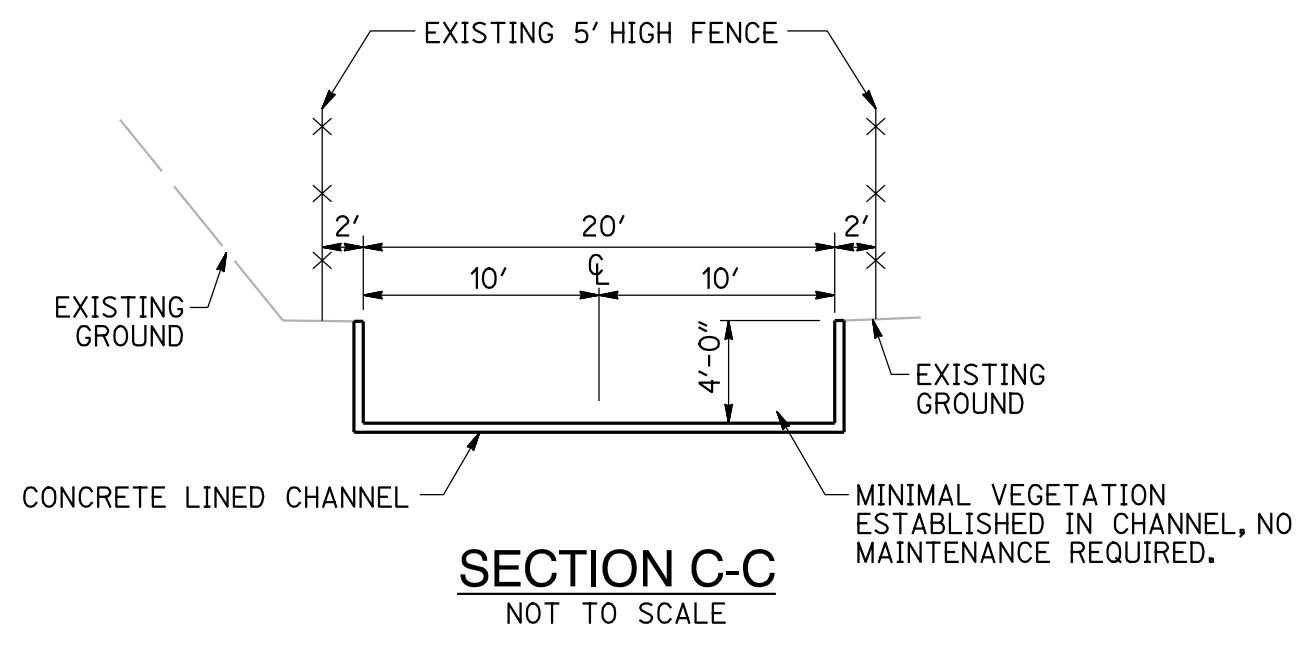
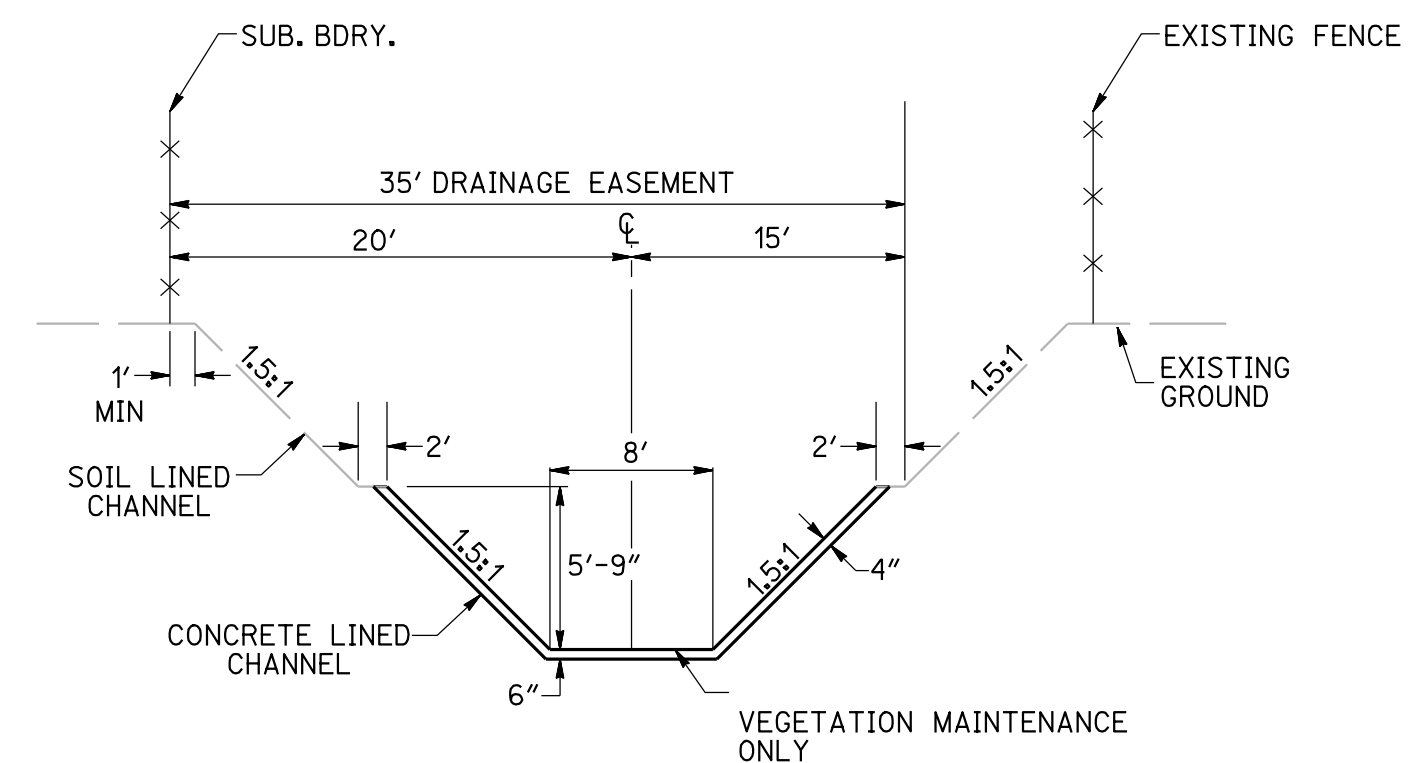
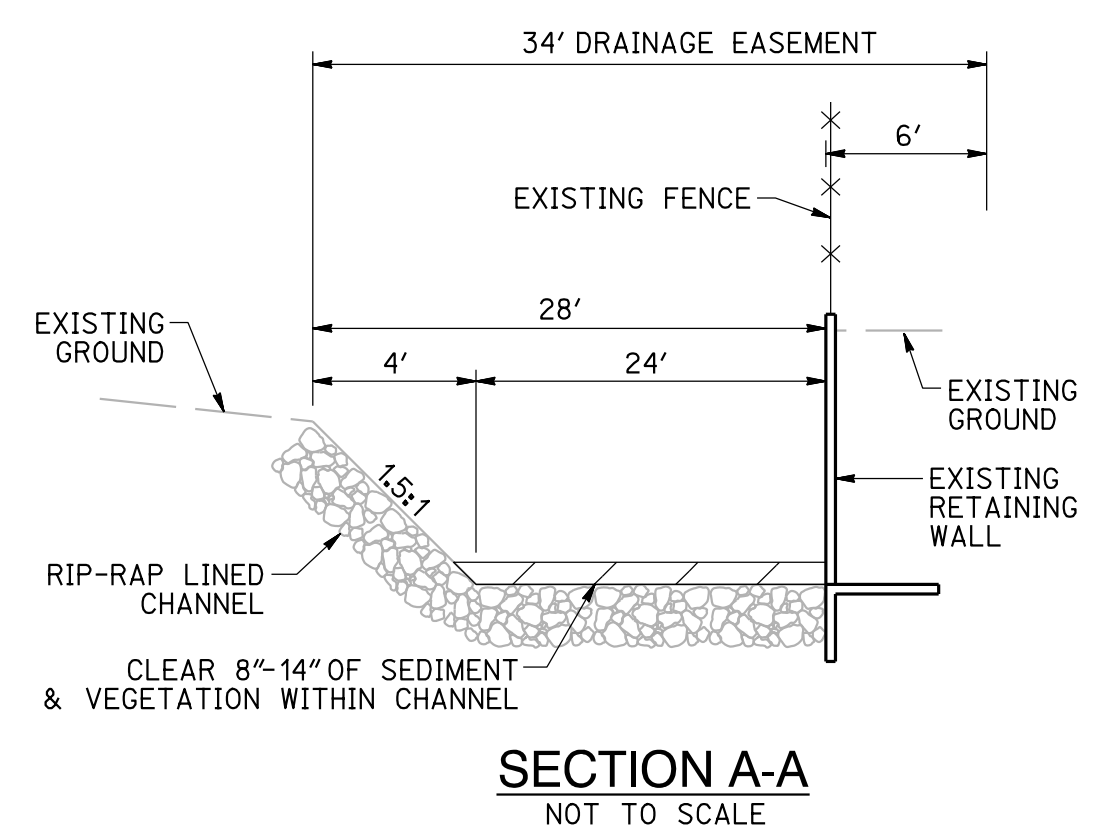
The City of  
**SAN DIEGO**

**DEVELOPMENT SERVICES DEPARTMENT**

STREET DATA TABLE				
STREET NAME	CLASSIFICATION	SPEED (MPH)	ADT (VEHICLES)	R/W (FT)



SE-5, WM-1  
 WM-2, WM-3  
 WM-4, WM-5  
 WM-8, WM-9  
 WM-10, WE-1  
 NS-9 (150 FT AWAY)



**ENGINEER OF WORK**

CARSON P. EDGINGTON R.C.E. 76519 DATE



MAINTENANCE PLAN:					I.O. NO.
SOUTH CHOLLAS CREEK CHANNEL					P.T.S. NO.
MMP MAP #101					V.T.M.
CITY OF SAN DIEGO, CALIFORNIA TRANSPORTATION AND STORMWATER DEPARTMENT SHEET 2 OF 4 SHEETS					
FOR CITY ENGINEER				DATE	
DESCRIPTION	BY	APPROVED	DATE	FILMED	
ORIGINAL	REC				XXXX-XXXX NAD83 COORDINATES
AS-BUILTS					XXX-XXXX LAMBERT COORDINATES
CONTRACTOR		DATE STARTED			
INSPECTOR		DATE COMPLETED			

**MAINTENANCE BMPs**

- ALL BEST MANAGEMENT PRACTICES (BMPs) WILL BE IMPLEMENTED PRIOR TO OR CONCURRENT WITH CONSTRUCTION AND MAINTAINED THROUGHOUT THE PROJECT. A QUALIFIED CONTACT PERSON WILL BE RESPONSIBLE FOR IMPLEMENTING THE WATER POLLUTION CONTROL PLAN (WPCP). ALL WORK SHALL BE COMPLETED BETWEEN SEPTEMBER 15TH AND FEBRUARY 15TH UNLESS AN EXTENSION IS GRANTED IN CONFORMANCE WITH ALL APPLICABLE PERMITS.
- CONTRACTOR WILL LIMIT ALL CONSTRUCTION RELATED ACTIVITIES TO THE PROJECT FOOTPRINT.
- EXISTING VEGETATION TO BE PRESERVED IN PLACE SHALL BE CLEARLY MARKED WITH A BUFFER AREA FOLLOWING THE GUIDANCE OF BMP FACT SHEET EC-2.
- CONTRACTOR SHALL BE RESPONSIBLE FOR CLEANUP OF SILT AND MUD ON STREETS AND OTHER PAVED SURFACES DUE TO EXCAVATION ACTIVITIES. STREET SWEEPING AND VACUUMING WILL BE MANAGED FOLLOWING THE GUIDANCE OF BMP FACT SHEET SE-7.
- WEATHER TRIGGERED ACTION PLAN SHALL BE IMPLEMENTED WHEN THERE IS A FORECASTED 50% OR GREATER CHANCE OF LIKELY PRECIPITATION OF 0.1 INCH OR GREATER BY THE NATIONAL WEATHER SERVICE FORECAST.
- CONTRACTOR SHALL RESTORE ALL EROSION CONTROL DEVICES TO WORKING ORDER AFTER EACH RUNOFF -PRODUCING RAINFALL.
- TEMPORARY EROSION OR SEDIMENT CONTROL MEASURES WILL BE REMOVED UPON COMPLETION OF MAINTENANCE UNLESS THEIR REMOVAL WOULD RESULT IN GREATER ENVIRONMENTAL IMPACT THAN LEAVING THEM IN PLACE.
- HAZARDOUS MATERIALS USED DURING MAINTENANCE WILL NOT BE STORED WITHIN 50 FEET FROM STORM WATER FACILITIES. HAZARDOUS MATERIALS SHALL BE MANAGED AND STORED IN ACCORDANCE WITH APPLICABLE LOCAL, STATE AND FEDERAL REGULATIONS. A REGISTERED FIRST-RESPONSE, PROFESSIONAL HAZARDOUS MATERIALS CLEAN-UP/REMEDATION SERVICE SHALL BE LOCALLY AVAILABLE ON CALL.
- THE TREATMENT, STORAGE, AND DISPOSAL OF WASTEWATER DURING THE LIFE OF THE PROJECT MUST BE DONE IN ACCORDANCE WITH WASTE DISCHARGE REQUIREMENTS ESTABLISHED BY THE SAN DIEGO WATER BOARD PURSUANT TO CWC 13260.
- SPILLS SHALL BE MANAGED FOLLOWING THE GUIDANCE OF BMP FACT SHEET WM-4. SPILL CLEANUP MATERIALS SHALL BE AVAILABLE ONSITE AT ALL TIMES.
- THE CONTRACTOR SHALL PROVIDE EQUIPMENT NECESSARY TO EXTINGUISH SMALL BRUSH FIRES (FROM SPARKING VEHICLES, ETC.) ON-SITE DURING ALL PHASES OF PROJECT ACTIVITIES, ALONG WITH TRAINED PERSONNEL FOR USE OF SUCH EQUIPMENT.
- THE CONTRACTOR SHALL MONITOR THE 5 DAY WEATHER FORECAST. IF ANY PRECIPITATION IS FORECASTED, THE SITE SHALL BE SECURED TO PREVENT ANY CONSTRUCTION RELATED MATERIALS FROM LEAVING THE SITE AND ENTERING THE CHANNELS. NO CONSTRUCTION ACTIVITIES SHALL OCCUR DURING RAIN EVENTS.
- SAMPLING AND ANALYSIS, MONITORING AND REPORTING, AND POST-MAINTENANCE MANAGEMENT OF THE PROJECT SHALL BE CONDUCTED AS DETERMINED NECESSARY BY THE CITY OF SAN DIEGO.
- CHANNELS WILL BE INSPECTED WITHIN 72 HOURS OF THE FIRST 2-YEAR STORM FOLLOWING MAINTENANCE. IF SUBSTANTIAL EROSION HAS OCCURRED, EROSION CONTROL MEASURES RECOMMENDED BY THE FIELD ENGINEER WILL BE IMPLEMENTED TO REMEDIATE EROSION AREAS AND TO MINIMIZE FUTURE EROSION.
- CONTRACTOR SHALL PROVIDE TRAINING FOR ALL PERSONNEL RESPONSIBLE FOR THE PROPER INSTALLATION, INSPECTION, AND MAINTENANCE OF ONSITE BMPs.
- THE QUALIFIED CONTACT PERSON WILL ASSIGN A MONITOR FOR DAILY INSPECTION OF THE BMPs EACH MORNING. THE MONITOR WILL CHECK THE NATIONAL WEATHER SERVICE FORECAST, COMPLETE BMP INSPECTION CHECKLIST, PERFORM ANY NECESSARY BMP MAINTENANCE/REPAIRS, AND REPORT THE RESULTS TO THE QUALIFIED CONTACT PERSON. COMPLETED INSPECTION CHECKLIST WILL BE KEPT WITH THE WPCP.
- PREVIOUSLY UNDISTURBED STAGING AREAS WILL BE REVEGETATED WITHIN 30 DAYS OF COMPLETION OF MAINTENANCE ACTIVITIES. THE REVEGETATED AREAS WILL BE MONITORED FOR A PERIODS OF NOT LESS THAN 25 MONTHS AFTER PLANTING.
- FINAL LOCATION OF CHANNEL CENTERLINE WILL BE DETERMINED IN THE FIELD AND COORDINATED WITH THE NECESSARY PROJECT SPECIALIST (BIOLOGIST, HISTORICAL MONITOR, ETC.)

**SOUTH CHOLLAS CREEK CHANNEL - MMP MAP No. 101  
IMP MAINTENANCE METHODOLOGY TABLE**

FACILITY/CHANNEL	SOUTH CHOLLAS CREEK CHANNEL - MAP NO. 101	
DIMENSIONS	TRAPAZOIDAL EARTHEN BASE WITH CONCRETE SIDES 50' LENGTH APPROX 28' TOP WIDTH 24'-35' BOTTOM WIDTH 6" IN DEPTH 0.5'-2' OF SEDIMENT MAXIMUM ESTIMATED CUBIC YARDS OF MATERIAL REMOVAL (SEDIMENT AND VEGETATION): 6,530	TRAPAZOIDAL, CONCRETE-LINED 1370' LENGTH APPROX 28' TOP WIDTH 24'-35' BOTTOM WIDTH 6" IN DEPTH MAXIMUM ESTIMATED CUBIC YARDS OF MATERIAL REMOVAL (VEGETATION ONLY): 850
MAINTENANCE METHOD	MECHANIZED SEDIMENT & VEGETATION REMOVAL	
EQUIPMENT (EQUIPMENT WILL BE EQUIVALENT OR SMALLER IN SIZE/TYPE)	<ul style="list-style-type: none"> <li>GRADALL (5100 SERIES)</li> <li>SKID STEER/TRACK STEER (CAT 289D)</li> <li>DOZER (CAT D6)</li> <li>EXCAVATOR (CAT 349)</li> <li>FRONT-END LOADER (CAT 966)</li> <li>DUMP TRUCK(S) (12 YD)</li> <li>6" PUMP(S) OR SMALLER</li> </ul>	
SCHEDULE	IN CHANNEL MAINTENANCE WILL TAKE APPROXIMATELY 6 DAYS 6:00 AM TO 6:00 PM	
STAFFING	10 TO 14 PEOPLE	
MAINTENANCE PROCEDURE	<p>CHANNEL SEQUENCE</p> <ol style="list-style-type: none"> <li>SOUTH CHOLLAS CREEK CHANNEL (CONCRETE LINED) (STATION 27+51.3) TO BEGINNING OF RIPRAP SOUTH CHOLLAS CREEK CHANNEL (EARTHEN BOTTOM WITH CONCRETE SIDE WALLS) (STATION 15+75.6)</li> <li>BEGINNING OF RIPRAP TO (STATION 15+75.6) END OF RIPRAP SOUTH CHOLLAS CREEK CHANNEL (EARTHEN BOTTOM WITH CONCRETE SIDE WALLS) (STATION 15+25.6)</li> </ol>	
ACCESS & LOADING AREA(S)	<p>ACCESS AREA(S) (STATION 27+05.2) DOZER/EXCAVATOR/LOADER ENTER/EXIT(S) CHANNEL EASEMENTS FROM EXISTING EARTHEN ACCESS EASEMENTS AT 2870-3648 FEDERAL BLVD &amp; 6062 FEDERAL BLVD. ADDITIONAL PROPOSED ACCESS AREA MAY BE REQUIRED THROUGH PRIVATE PROPERTY AT 6144 FEDERAL BLVD.</p> <p>LOADING AREA(S) (STATION 27+64.9) EXCAVATOR/FRONT-END LOADER LOADS TRUCKS IN CHANNEL, AT BASE OF ACCESS RAMPS.</p>	
STAGING & STOCKPILE AREA	DOZER/EXCAVATOR/FRONT-END LOADER WILL BE STAGED ON SITE AT THE ACCESS EASEMENTS MENTIONED ABOVE. ALL MATERIALS WILL BE HAULED IMMEDIATELY TO A LEGAL DISPOSAL SITE (MIRAMAR LANDFILL).	
METHODOLOGY	<ol style="list-style-type: none"> <li>DRY WEATHER FLOW DIVERSION BERM (TIGER DAM/SANDBAGS) &amp; DIVERSION PUMP(S) WILL BE PLACED AT EASTERN LIMITS OF CHANNEL CLEANING. DIVERSION PIPES WILL BE PLACED ON EASTERN SIDE OF THE CHANNEL AND EXTENDED TO A DISCHARGE AREA WEST OF THE MAINTENANCE LIMITS.</li> <li>DOZER/EXCAVATOR/FRONT-END LOADER ENTER/EXIT(S) CHANNEL AT ACCESS &amp; LOADING AREA(S).</li> <li>DOZER PUSHES VEGETATION &amp; SEDIMENT TO EXCAVATOR/FRONT-END LOADER, STATIONED INSIDE OF CHANNEL, WITHIN ACCESS &amp; LOADING AREA(S).</li> <li>EXCAVATOR/FRONT-END LOADER SCOOPS MATERIAL &amp; LOADS MATERIAL INTO WAITING DUMP TRUCKS, LOCATED AT BOTTOM OF ACCESS RAMP(S).</li> <li>DUMP TRUCKS HAUL MATERIAL TO LEGAL DISPOSAL SITE.</li> <li>DOZER/EXCAVATOR/FRONT-END LOADER EXIT CHANNEL.</li> <li>DRY WEATHER DIVERSION BERM, DIVERSION PUMP(S) &amp; HOSES REMOVED.</li> </ol>	
POST-MAINTENANCE	<ol style="list-style-type: none"> <li>DEMOBILIZE EQUIPMENT.</li> <li>REMOVE TEMPORARY CONSTRUCTION BMPs.</li> </ol>	
OTHER NOTES	<ol style="list-style-type: none"> <li>SWEEPER SWEEPS ADJACENT PUBLIC RIGHTS-OF-WAY AND IMMEDIATE TRUCK LOADING SITES AT PROJECT'S COMPLETION.</li> <li>EQUIPMENT FUELED OUTSIDE CHANNEL &amp; LOCATED AT LEAST 150' FROM WATERS OF US/STATE.</li> <li>DEWATERING PUMP(S) MAY BE USED AT VARIOUS LOCATIONS TO REMOVE PONDED WATER PRIOR TO EQUIPMENT ENTERING THE CHANNEL. WATER WILL BE DISCHARGED JUST WEST OF THE PROJECT MAINTENANCE LIMITS.</li> </ol>	

ENGINEER OF WORK



CARSON P. EDGINGTON R.C.E. 76519 DATE

**MAINTENANCE METHODOLOGY AND BMP NOTES:**

**SOUTH CHOLLAS CREEK CHANNEL  
MMP MAP #101**

CITY OF SAN DIEGO, CALIFORNIA TRANSPORTATION AND STORMWATER DEPARTMENT SHEET 3 OF 4 SHEETS				I.O. NO. _____ P.T.S. NO. _____
FOR CITY ENGINEER			DATE	V.T.M. _____
DESCRIPTION	BY	APPROVED	DATE	FILMED
ORIGINAL	REC			
				XXXX-XXXX NAD83 COORDINATES
				XXX-XXXX LAMBERT COORDINATES
AS-BUILTS				
CONTRACTOR		DATE STARTED		
INSPECTOR		DATE COMPLETED		

-3-D

© 2017 Rick Engineering Company

**RICK ENGINEERING COMPANY**  
5620 FRIARS ROAD  
SAN DIEGO, CA 92110  
619.291.0707  
(FAX) 619.291.4165  
rickengineering.com  
San Diego Riverside - Orange - San Luis Obispo - Bakersfield - Sacramento - Phoenix - Tucson

\\17204-L10439\_1\\HA\_111712\_South Chollas Creek Map 101\\C111\\00000117000\_00111003.dwg  
\\17204-L10439\_1\\HA\_111712\_South Chollas Creek Map 101\\C111\\00000117000\_00111003.dwg  
17-MAY-2017 09:23

**MASTER MAINTENANCE PROGRAM (MMP) PROTOCOL REQUIREMENTS:**

1. BIO-1: RESTRICT VEHICLES TO ACCESS DESIGNATED IN THE MMP.
2. BIO-2: FLAG AND DELINEATE ALL SENSITIVE BIOLOGICAL RESOURCES TO REMAIN WITHIN OR ADJACENT TO MAINTENANCE AREA PRIOR TO INITIATION OF MAINTENANCE ACTIVITIES IN ACCORDANCE WITH THE SITE SPECIFIC INDIVIDUAL BIOLOGICAL ASSESSMENT (IBA), INDIVIDUAL HYDROLOGY AND HYDRAULIC ASSESSMENT (IHHA), AND/OR INDIVIDUAL MAINTENANCE PLAN (IMP) PREPARED FOR THE WORK.
3. BIO-3: CONDUCT A PRE-MAINTENANCE MEETING ON SITE PRIOR TO THE START OF ANY MAINTENANCE ACTIVITY THAT OCCURS WITHIN OR ADJACENT TO SENSITIVE BIOLOGICAL RESOURCES. THE PRE-MAINTENANCE MEETING SHALL INCLUDE A QUALIFIED BIOLOGIST, FIELD ENGINEER, PLANNER, EQUIPMENT OPERATORS/SUPERINTENDENT AND OTHER KEY PERSONNEL CONDUCTING OR INVOLVED IN CHANNEL MAINTENANCE ACTIVITIES. THE QUALIFIED BIOLOGIST SHALL POINT OUT OR IDENTIFY SENSITIVE BIOLOGICAL RESOURCES TO BE AVOIDED DURING MAINTENANCE. FLAG/DELINEATE SENSITIVE RESOURCES TO BE AVOIDED, REVIEW SPECIFIC MEASURES TO PROTECT SENSITIVE BIOLOGICAL RESOURCES AS NECESSARY. THE BIOLOGIST SHALL ALSO REVIEW THE PROPOSED EROSION CONTROL METHODS TO CONFIRM THEY WILL NOT POSE RISK TO WILDLIFE (E.G., NON-BIODEGRADABLE BLANKETS MAY ENTANGLE WILDLIFE).
4. BIO-4: AVOID THE INTRODUCTION OF INVASIVE PLANT SPECIES WITH PHYSICAL EROSION CONTROL MEASURES.
5. BIO-5: CONDUCT APPROPRIATE PRE-MAINTENANCE SURVEYS IF MAINTENANCE IS PROPOSED DURING THE BREEDING SEASON OF A SENSITIVE ANIMAL SPECIES (JANUARY 15 TO AUGUST 31). IF SENSITIVE ANIMAL SPECIES COVERED BY THE PROGRAM ENVIRONMENTAL IMPACT REPORT (PEIR) ARE IDENTIFIED, THEN APPLICABLE MEASURES FROM THE MITIGATION MONITORING AND REPORTING PLAN (MMRP) SHALL BE IMPLEMENTED UNDER THE DIRECTION OF A QUALIFIED BIOLOGIST TO AVOID SIGNIFICANT DIRECT AND/OR INDIRECT IMPACTS TO IDENTIFIED SENSITIVE ANIMAL SPECIES. IF SENSITIVE ANIMAL SPECIES ARE IDENTIFIED DURING PRE-MAINTENANCE SURVEYS THAT ARE NOT COVERED BY THE PEIR, SWD SHALL CONTACT THE APPROPRIATE WILDLIFE AGENCIES AND ADDITIONAL ENVIRONMENTAL REVIEW UNDER CEQA WILL BE REQUIRED.
6. BIO-6: REMOVE ARUNDO THROUGH ONE, OR A COMBINATION OF, THE FOLLOWING METHODS: (1) FOLIAR SPRAY (SPRAYING HERBICIDE ON LEAVES AND STEMS WITHOUT CUTTING FIRST) WHEN ARUNDO OCCURS IN MONOTYPIC STANDS, OR (2) CUT AND PAINT (CUTTING STEMS CLOSE TO THE GROUND AND SPRAYING OR PAINTING HERBICIDE ON CUT STEM SURFACE) WHEN ARUNDO IS INTERMIXED WITH NATIVE PLANTS. WHEN SEDIMENT SUPPORTING ARUNDO MUST BE REMOVED, THE SEDIMENT SHALL BE EXCAVATED TO A DEPTH SUFFICIENT TO REMOVE THE RHIZOMES, WHEREVER FEASIBLE. FOLLOWING REMOVAL OF SEDIMENT CONTAINING RHIZOMES, LOOSE RHIZOME MATERIAL SHALL BE REMOVED FROM THE CHANNEL AND DISPOSED OFFSITE. AFTER THE INITIAL TREATMENT, THE AREA OF REMOVAL SHALL BE INSPECTED ON A QUARTERLY BASIS FOR UP TWO YEARS, OR UNTIL NO RESPROUTING IS OBSERVED DURING AN INSPECTION. IF RESPROUTING IS OBSERVED, THE CUT AND PAINT METHOD SHALL BE APPLIED TO ALL RESPROUTS.
7. BIO-7: AVOID MECHANIZED MAINTENANCE WITHIN 300 FEET OF A COOPER'S HAWK NEST, 900 FEET OF A NORTHERN HARRIER'S NEST, OR 500 FEET OF ANY OTHER RAPTOR'S NEST UNTIL ANY FLEDGLINGS HAVE LEFT THE NEST.
8. WM-1: DISPOSE AND TRANSPORT COMPOSTABLE GREEN WASTE MATERIAL TO AN APPROVED COMPOSTING FACILITY, IF AVAILABLE.
9. WM-2: RE-USE EXCAVATED MATERIAL, WHENEVER POSSIBLE AS FILL MATERIAL, AGGREGATE SAND REPLENISHMENT, OR OTHER RAW MATERIAL USES. RE-USED MATERIAL (AGGREGATES, SOIL, SAND OR SILT) SHALL BE DOCUMENTED IN ACCORDANCE WITH APPLICABLE LOCAL, STATE AND FEDERAL REGULATIONS.
10. WM-3: SEPARATE WASTE TIRES FROM EXCAVATED MATERIAL AND TRANSPORT THEM TO AN APPROPRIATE DISPOSAL FACILITY. IF MORE THAN NINE TIRES ARE IN A VEHICLE OR WASTE BIN AT ANY ONE TIME, THEY SHALL BE TRANSPORTED UNDER A COMPLETED COMPREHENSIVE TRIP LOG (CTL) TO DOCUMENT THAT THE TIRES WERE TAKEN TO AN APPROPRIATE DISPOSAL FACILITY.
11. WM-4: LOG AND TRANSPORT ANY HAZARDOUS MATERIALS ENCOUNTERED DURING MAINTENANCE TO A HAZARDOUS WASTE STORAGE, RECYCLING, TREATMENT OR DISPOSAL FACILITY. PERSONNEL HANDLING HAZARDOUS MATERIALS SHALL HAVE THE APPROPRIATE TRAINING TO HANDLE, STORE, TRANSPORT, AND/OR DISPOSE THE MATERIAL. HAZARDOUS MATERIALS (E.G., MACHINE OIL, MERCURY SWITCHES, AND REFRIGERANT GASES) SHALL BE REMOVED FROM APPLIANCES AND DISPOSED IN ACCORDANCE WITH THIS PROTOCOL.
12. W0-2: PREVENT OFF-SITE SEDIMENT TRANSPORT DURING MAINTENANCE THROUGH THE USE OF EROSION AND SEDIMENT CONTROLS WITHIN STORM WATER FACILITIES, ALONG ACCESS ROUTES AND AROUND STOCKPILE/STAGING AREAS. INSTALL BMPs SUCH AS SILT FENCES, FIBER ROLLS, GRAVEL BAGS, TEMPORARY SEDIMENT BASINS, STABILIZED MAINTENANCE ACCESS POINTS (E.G., SHAKER PLATES), CONTAINMENT BARRIERS (E.G., SILT FENCE, FIBER ROLLS AND/OR BERMS) FOR MATERIAL STOCKPILES, AND PROPERLY FITTED COVERS FOR MATERIAL TRANSPORT VEHICLES. REMOVE TEMPORARY EROSION OR SEDIMENT CONTROL MEASURES UPON COMPLETION OF MAINTENANCE UNLESS THEIR REMOVAL WOULD RESULT IN GREATER ENVIRONMENTAL IMPACT THAN LEAVING THEM IN PLACE.
13. W0-3: STORE BMP MATERIALS ON-SITE TO PROVIDE COMPLETE PROTECTION OF EXPOSED AREAS AND PREVENT OFF-SITE SEDIMENT TRANSPORT.
14. W0-4: PROVIDE TRAINING FOR PERSONNEL RESPONSIBLE FOR THE PROPER INSTALLATION, INSPECTION, AND MAINTENANCE OF ON-SITE BMPs.
15. W0-7: AVOID STORING HAZARDOUS MATERIALS USED DURING MAINTENANCE WITHIN 50 FEET FROM STORM WATER FACILITIES. HAZARDOUS MATERIALS SHALL BE MANAGED AND STORED IN ACCORDANCE WITH APPLICABLE LOCAL, STATE, AND FEDERAL REGULATIONS.
16. W0-8: STORE MAINTENANCE-RELATED TRASH IN AREAS AT LEAST 50 FEET FROM STORM WATER FACILITIES, AND REMOVE ANY TRASH RECEPTACLES REGULARLY (AT LEAST WEEKLY).
17. W0-10: INSPECT EARTHEN-BOTTOM STORM WATER FACILITIES WITHIN 30 DAYS OF THE FIRST 2-YEAR STORM FOLLOWING MAINTENANCE. IMPLEMENT EROSION CONTROL MEASURES RECOMMENDED BY THE FIELD ENGINEER, SUCH AS FIBER BLANKETS, TO REMEDIATE SUBSTANTIAL EROSION WHICH HAS OCCURRED AND TO MINIMIZE FUTURE EROSION.

**PEIR ENVIRONMENTAL MITIGATION MEASURES**

GENERAL MITIGATION MEASURE 1 OF THE MITIGATION MONITORING AND REPORTING PROGRAM (MMRP) ADOPTED FOR THE MMP REQUIRES ALL OF THE MITIGATION MEASURES IDENTIFIED IN THE PROGRAM EIR (PEIR) BE INCLUDED WITH THE MAINTENANCE DOCUMENTS AND CONTRACT SPECIFICATIONS FOR EACH MAINTENANCE ACTIVITY. TO FULFILL THIS REQUIREMENT, THE MMRP IS INCLUDED IN ITS ENTIRETY AS ATTACHMENT 1 TO THIS IMP.

**ADDITIONAL MAINTENANCE REQUIREMENTS**

1. THE CITY SHALL NOTIFY CALIFORNIA DEPARTMENT OF FISH & WILDLIFE (CDFW), IN WRITING, AT LEAST FIVE DAYS PRIOR TO INITIATION OF CONSTRUCTION PRIOR TO COMPLETION OF CONSTRUCTION (PROJECT) ACTIVITIES. NOTIFICATION SHALL BE SENT TO CDFW'S SOUTH COAST OFFICE, ATTN: STREAMBED ALTERATION PROGRAM-SM# 1600-2011-0271-R5.
2. AVOID THE INTRODUCTION OF INVASIVE PLANT SPECIES WITH PHYSICAL EROSION CONTROL MEASURES.
3. PRIOR TO COMMENCING ANY MAINTENANCE ACTIVITY WHICH MAY IMPACT SENSITIVE BIOLOGICAL RESOURCES, THE MONITORING BIOLOGIST SHALL VERIFY THAT THE FOLLOWING ACTIONS HAVE BEEN TAKEN, AS APPROPRIATE:
  - FENCING, FLAGGING, SIGNAGE OR OTHER MEANS TO PROTECT SENSITIVE RESOURCES TO REMAIN AFTER MAINTENANCE HAS BEEN IMPLEMENTED;
  - NOISE ATTENUATION MEASURES NEEDED TO PROTECT SENSITIVE WILDLIFE ARE IN PLACE AND EFFECTIVE; AND/OR
  - NESTING BIRDS HAVE BEEN IDENTIFIED AND NECESSARY MAINTENANCE SETBACKS HAVE BEEN ESTABLISHED IF MAINTENANCE IS TO OCCUR BETWEEN JANUARY 15 AND AUGUST 31.
4. IF ANY WILDLIFE IS ENCOUNTERED DURING THE COURSE OF MAINTENANCE, SAID WILDLIFE SHALL BE ALLOWED TO LEAVE THE MAINTENANCE AREA UNHARMED.

**ADDITIONAL MITIGATION MEASURES**

1. TO SATISFY MITIGATION MEASURE 4.4.3, A QUALIFIED ARCHAEOLOGIST AND THE NATIVE AMERICAN MONITOR SHALL ATTEND THE PRE-MAINTENANCE MEETING. VEGETATION REMOVAL AND PREPARATION OF THE ACCESS AND STAGING AREAS WITHIN SOUTH CHOLLAS CREEK CHANNEL MAP 101 SHALL BE MONITORED TO AVOID IMPACTS TO ANY CULTURAL RESOURCES LOCATED WITHIN THESE AREAS. BASED ON DISCUSSIONS WITH CITY MAINTENANCE STAFF AND FIELD CONDITIONS, THE ARCHAEOLOGIST AND NATIVE AMERICAN MONITOR SHALL DETERMINE THE FREQUENCY OF MONITORING OF SEDIMENT REMOVAL DURING MAINTENANCE ACTIVITIES IN CONSULTATION WITH THE CITY'S\*32S MMC. A MEMORANDUM SUMMARIZING THE RESULTS OF THE MONITORING SHALL BE PREPARED AND SUBMITTED TO THE CITY'S\*32S MMC WITHIN 30 DAYS OF COMPLETING THE MONITORING.

**ENGINEER OF WORK**

CARSON P. EDGINGTON R.C.E. 76519 DATE \_\_\_\_\_



<b>MASTER MAINTENANCE PROGRAM (MMP) PROTOCOL REQUIREMENTS AND PEIR ENVIRONMENTAL MITIGATION MEASURES</b>				
<b>SOUTH CHOLLAS CREEK CHANNEL</b>				
<b>MMP MAP #101</b>				
CITY OF SAN DIEGO, CALIFORNIA TRANSPORTATION AND STORMWATER DEPARTMENT SHEET 4 OF 4 SHEETS				I.O. NO. _____ P.T.S NO. _____
FOR CITY ENGINEER _____ DATE _____				V.T.M. _____
DESCRIPTION	BY	APPROVED	DATE	FILMED
ORIGINAL	REC			
				XXXX-XXXX NAD83 COORDINATES
				XXX-XXXX LAMBERT COORDINATES
AS-BUILTS _____				
CONTRACTOR _____		DATE STARTED _____		
INSPECTOR _____		DATE COMPLETED _____		

**RICK ENGINEERING COMPANY**  
 5620 FRIARS ROAD SAN DIEGO, CA 92110 J-17204-L  
 619.291.0707  
 (FAX) 619.291.4165  
 rickengineering.com

San Diego Riverside - Orange - San Luis Obispo - Bakersfield - Sacramento - Phoenix - Tucson  
 WA 17204-L-10-29\_IHHA\_171712\_South Chollas Creek Map 101(C)111/Sheets/SD\_Corps/05\_2005\_desc1.ppt  
 WA 17204-L-10-29\_IHHA\_171712\_South Chollas Creek Map 101(C)111/Sheets/SD\_Corps/05\_2005\_desc1.ppt  
 16-MFP-2017-0814