

San Vicente Dam
Sunny Day Dam Breach Overview
This breach consists of a failure of both the San Vicente Dam and central overpour spillway
San Diego County, California
State Dam ID: 8.009
& National Dam ID: CA00113



0 95 190 Miles
 Modeling Date: May-2019
 Map Creation Date: April-2020
 By: J. Weber

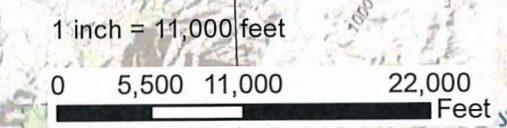
- Legend**
- Cross Section
 - Flow Path
 - Detailed Sheet Extent
 - Approx. Maximum Flooding Extent

Notes:
 1. This inundation map has been prepared in a manner consistent with that level of care and skill ordinarily exercised by Kleinfelder's profession practicing in the same locality, under similar conditions and at the date services are provided. Our conclusions, opinions, and recommendations are based on a limited number of observations, data, and the current guidance and requirements outlined by the California DSOD.
 2. The information on this graphic representation has been compiled from a variety of sources and is subject to change without notice. Kleinfelder makes no representations or warranties, express or implied, as to accuracy, completeness, timeliness, or rights to the use of such information. The information shown on this map is approximate and should be used as a guideline for emergency response and preparation purposes. This document is not intended for use as a land survey project nor is it designed or intended as construction design document. The use or misuse of the information contained on this graphic representation is at the sole risk of the party using or misusing the information.
 3. All elevations are reported in the NAVD88 vertical datum.
 4. Inundation depths less than one foot are not shown.
 5. Mapped depths and arrival times will vary based on breach conditions, hydrologic conditions, modelling assumptions, and other factors. Emergency action plans that utilize these maps may want to consider a factor of safety for arrival times.

KLEINFELDER SD
 Bright People. Right Solutions.

550 West C Street,
 Suite 1200
 San Diego, CA 92101
 (619) 831-4600

Engineer Elizabeth Bissonnette
 License No. C68830



Service Layer Credits: Sources: Esri, HERE, Garmin, Intermap, increment P Corp., GEBCO, USGS, FAO, NPS, NRCAN, GeoBase, IGN, Kadaster NL, Ordnance Survey, Esri Japan, METI, Esri China (Hong Kong), swisstopo, © OpenStreetMap contributors, and the GIS User Community
 Sources: Esri, HERE, Garmin, USGS, Intermap, INCREMENT P, NRCan, Esri Japan, METI, Esri China (Hong Kong), Esri Korea, Esri (Thailand),

116°57'0"W 116°56'0"W 116°55'0"W 116°54'0"W 116°53'0"W 116°52'0"W

Name of Facility	Distance from Dam (mi)	Flood Wave Arrival Time (hrs:mins)	Maximum Inundation Depth (ft)	Peak Velocity (ft/sec)
-	-	-	-	-

Service Layer Credits: Source: Esri, DigitalGlobe, GeoEye, Earthstar (Earthstar), CNES/Airbus DS, USDA, USGS, AeroGRID, IGN, and the GIS User Community
 Sources: Esri, HERE, Garmin, USGS, Intermap, INCREMENT P, NRCan, Esri Japan, METI, Esri China (Hong Kong), Esri Korea, Esri (Switzerland), NICTD, OpenStreetMap contributors, and the GIS User Community

San Vicente Dam Sunny Day Dam Breach Flood Arrival Times

This breach consists of a failure of both the San Vicente Dam and central overpour spillway
 San Diego County, California
 State Dam ID: 8.009
 & National Dam ID: CA00113



Modeling Date: May-2019
 Map Creation Date: April-2020
 By: S. Wolfskill

Legend

Critical Structures

- Critical Road Point
- CalFire Facility
- Licensed Healthcare Facility
- Law Enforcement Facility
- School

Critical Road

- Approx. Time to 1 Foot Depth (hrs:mins)
- Cross Section
- Flow Path
- Approx. Maximum Flooding Extent
- Municipal Boundary

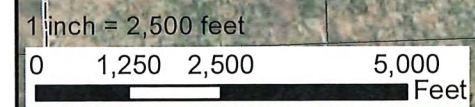
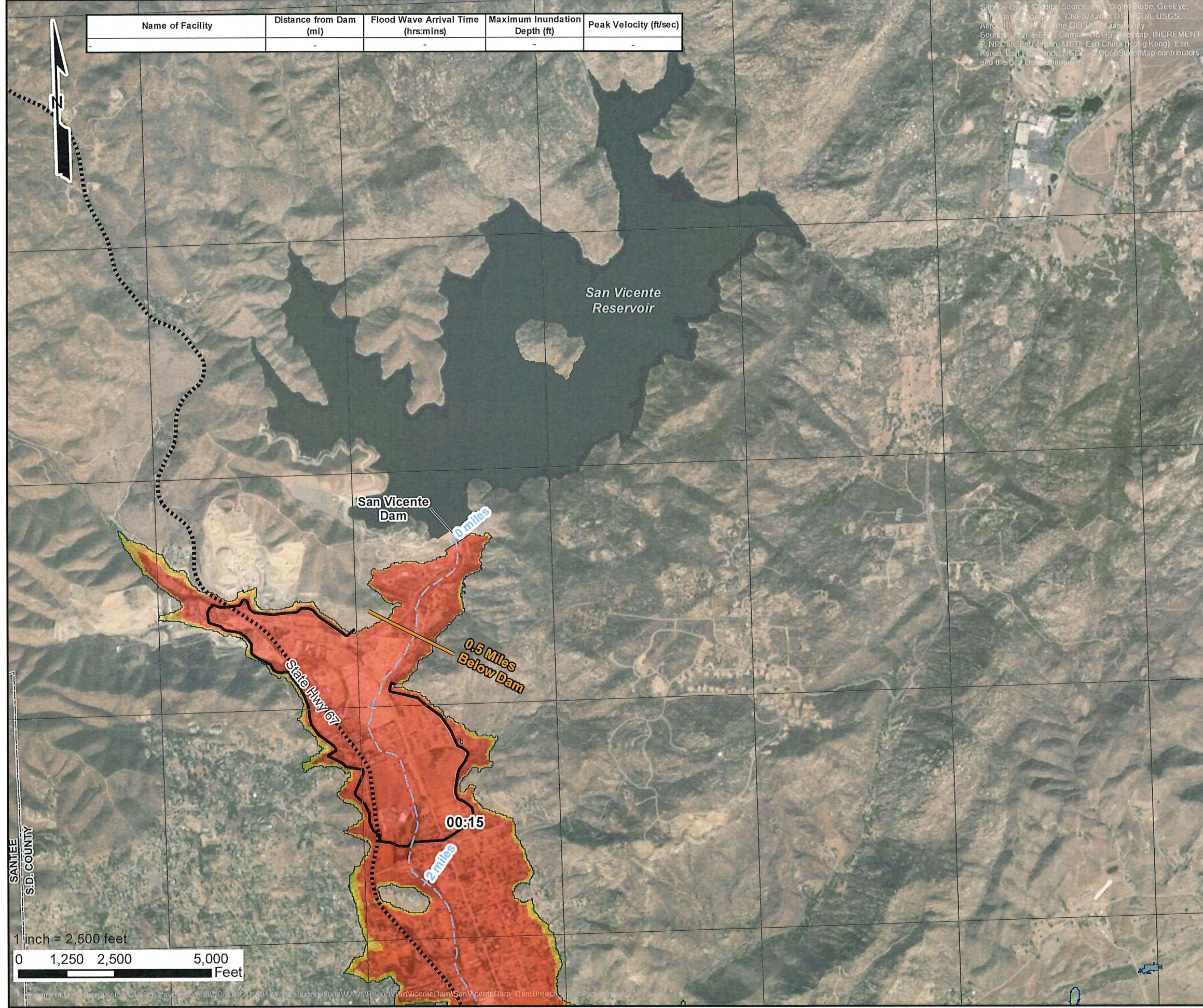
Maximum Inundation Depth (ft)

- 1 to 2
- 2 to 5
- 5 to 10
- 10 to 20
- 20+

* Variations in color are dependent upon the background imagery.

Notes:

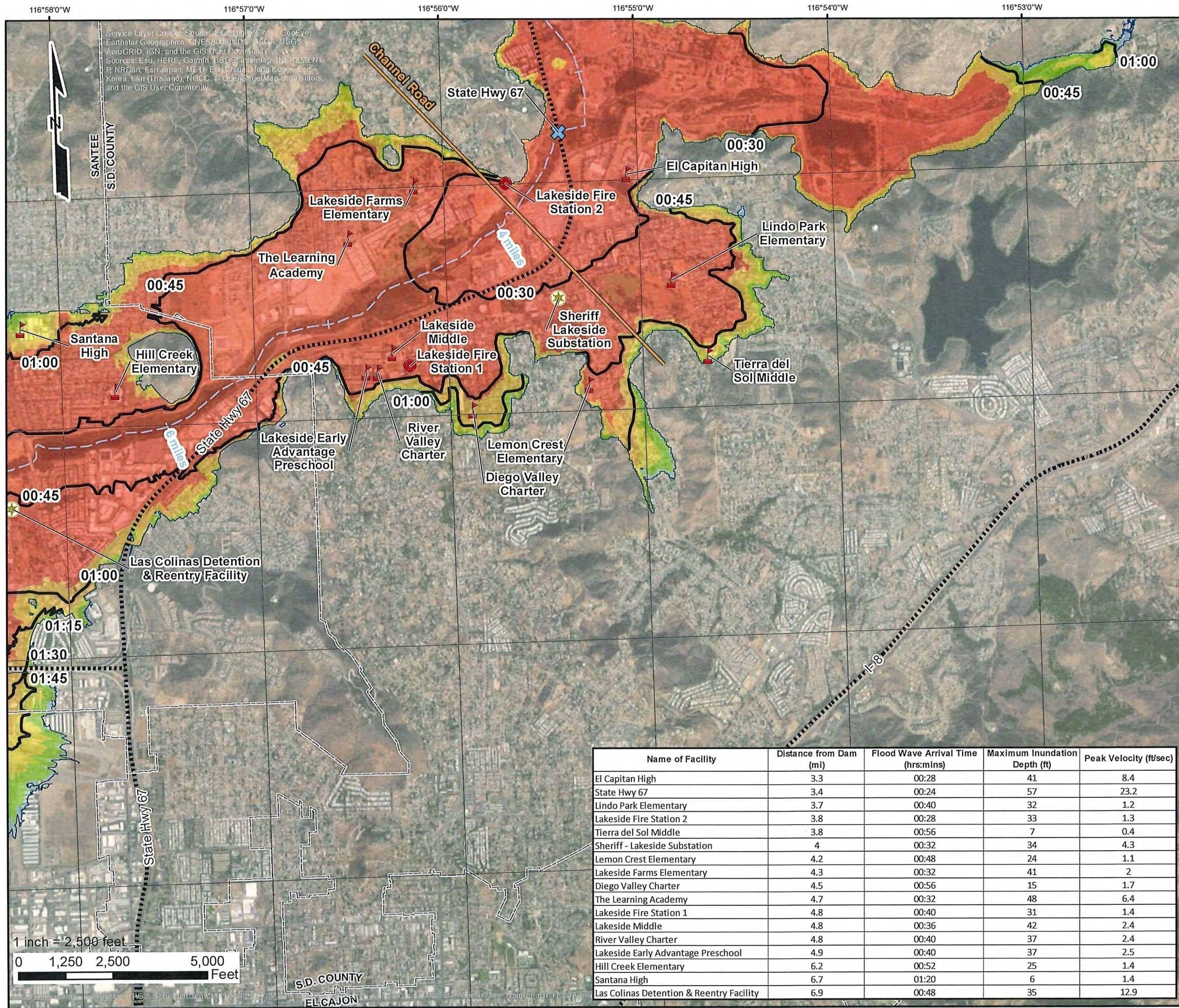
- This inundation map has been prepared in a manner consistent with that level of care and skill ordinarily exercised by Kleinfielder's profession practicing in the same locality, under similar conditions and at the date services are provided. Our conclusions, opinions, and recommendations are based on a limited number of observations, data, and the current guidance and requirements outlined by the California DSOD.
- The information on this graphic representation has been compiled from a variety of sources and is subject to change without notice. Kleinfielder makes no representations or warranties, express or implied, as to accuracy, completeness, timeliness, or rights to the use of such information. The information shown on this map is approximate and should be used as a guideline for emergency response and preparation purposes. This document is not intended for use as a land survey project nor is it designed or intended as construction design document. The use or misuse of the information contained on this graphic representation is at the sole risk of the party using or misusing the information.
- All elevations are reported in the NAVD88 vertical datum.
- Inundation depths less than one foot are not shown.
- Mapped depths and arrival times will vary based on breach conditions, hydrologic conditions, modelling assumptions, and other factors. Emergency action plans that utilize these maps may want to consider a factor of safety for arrival times.



KLEINFELDER SD
 Bright People. Right Solutions.

550 West C Street,
 Suite 1200
 San Diego, CA 92101
 (619) 831-4600

Engineer: Elizabeth Bissonnette
 License No. C68830



San Vicente Dam
Sunny Day Dam Breach Flood Arrival Times
This breach consists of a failure of both the San Vicente Dam and central overpour spillway
 San Diego County, California
 State Dam ID: 8.009
 & National Dam ID: CA00113



Modeling Date: May-2019
 Map Creation Date: April-2020
 By: S. Wolfskill

Legend

Critical Structures

- Critical Road Point
- CalFire Facility
- Licensed Healthcare Facility
- Law Enforcement Facility
- School

Other Symbols

- Critical Road
- Approx. Time to 1 Foot Depth (hrs:mins)
- Cross Section
- Flow Path
- Approx. Maximum Flooding Extent
- Municipal Boundary

Maximum Inundation Depth (ft)

- 1 to 2
- 2 to 5
- 5 to 10
- 10 to 20
- 20+

* Variations in color are dependent upon the background imagery.

Notes:

1. This inundation map has been prepared in a manner consistent with that level of care and skill ordinarily exercised by Kleinfelder's profession practicing in the same locality, under similar conditions and at the date services are provided. Our conclusions, opinions, and recommendations are based on a limited number of observations, data, and the current guidance and requirements outlined by the California DSOD.
2. The information on this graphic representation has been compiled from a variety of sources and is subject to change without notice. Kleinfelder makes no representations or warranties, express or implied, as to accuracy, completeness, timeliness, or rights to the use of such information. The information shown on this map is approximate and should be used as a guideline for emergency response and preparation purposes. This document is not intended for use as a land survey project nor is it designed or intended as construction design document. The use or misuse of the information contained on this graphic representation is at the sole risk of the party using or misusing the information.
3. All elevations are reported in the NAVD88 vertical datum.
4. Inundation depths less than one foot are not shown.
5. Mapped depths and arrival times will vary based on breach conditions, hydrologic conditions, modeling assumptions, and other factors. Emergency action plans that utilize these maps may want to consider a factor of safety for arrival times.

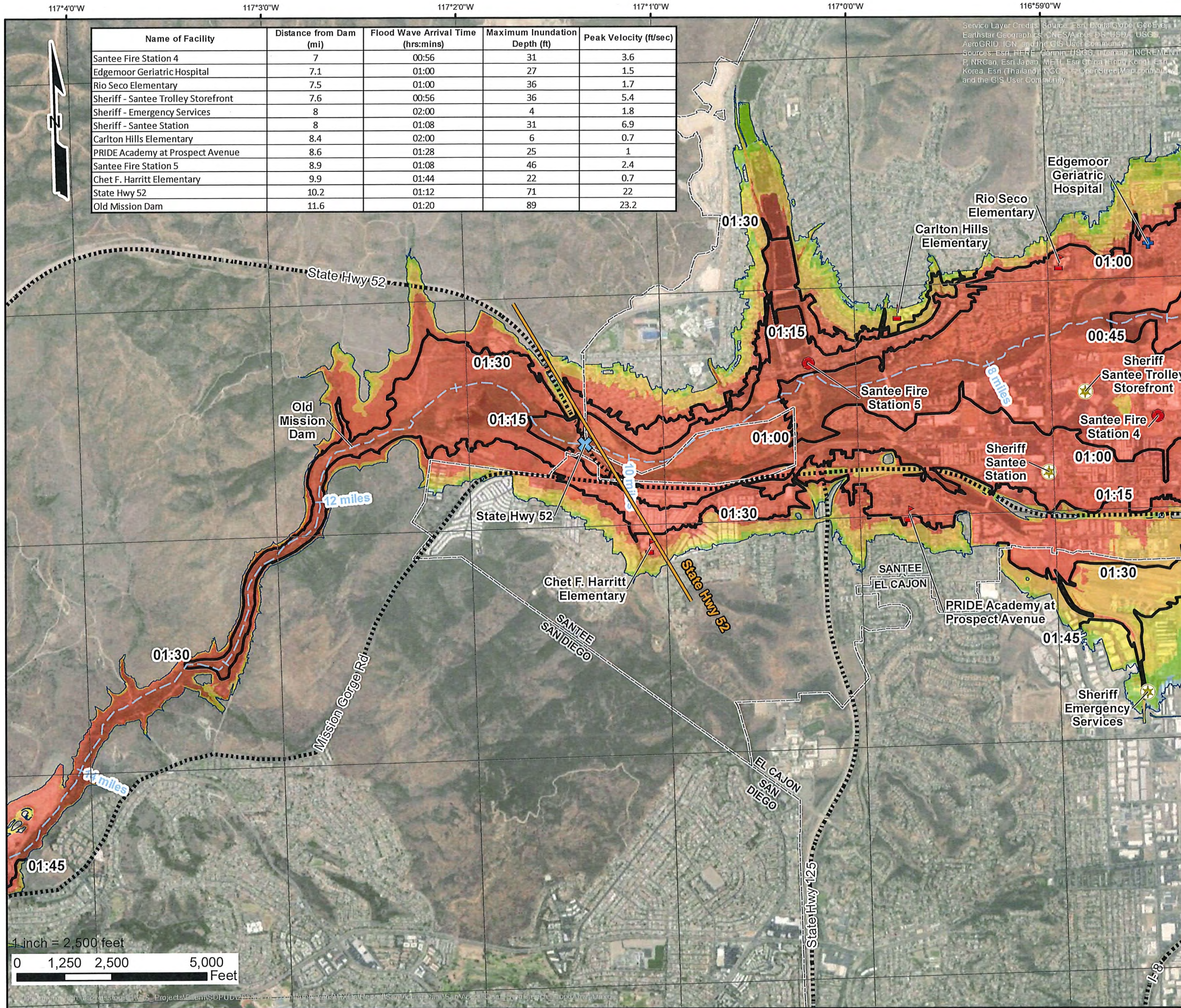
Name of Facility	Distance from Dam (mi)	Flood Wave Arrival Time (hrs:mins)	Maximum Inundation Depth (ft)	Peak Velocity (ft/sec)
El Capitan High	3.3	00:28	41	8.4
State Hwy 67	3.4	00:24	57	23.2
Lindo Park Elementary	3.7	00:40	32	1.2
Lakeside Fire Station 2	3.8	00:28	33	1.3
Tierra del Sol Middle	3.8	00:56	7	0.4
Sheriff - Lakeside Substation	4	00:32	34	4.3
Lemon Crest Elementary	4.2	00:48	24	1.1
Lakeside Farms Elementary	4.3	00:32	41	2
Diego Valley Charter	4.5	00:56	15	1.7
The Learning Academy	4.7	00:32	48	6.4
Lakeside Fire Station 1	4.8	00:40	31	1.4
Lakeside Middle	4.8	00:36	42	2.4
River Valley Charter	4.8	00:40	37	2.4
Lakeside Early Advantage Preschool	4.9	00:40	37	2.5
Hill Creek Elementary	6.2	00:52	25	1.4
Santana High	6.7	01:20	6	1.4
Las Colinas Detention & Reentry Facility	6.9	00:48	35	12.9



KLEINFELDER SD
 Bright People. Right Solutions.

550 West C Street,
 Suite 1200
 San Diego, CA 92101
 (619) 831-4600

Engineer Elizabeth Bissonnette
 License No. C68830



Name of Facility	Distance from Dam (mi)	Flood Wave Arrival Time (hrs:mins)	Maximum Inundation Depth (ft)	Peak Velocity (ft/sec)
Santee Fire Station 4	7	00:56	31	3.6
Edgemoor Geriatric Hospital	7.1	01:00	27	1.5
Rio Seco Elementary	7.5	01:00	36	1.7
Sheriff - Santee Trolley Storefront	7.6	00:56	36	5.4
Sheriff - Emergency Services	8	02:00	4	1.8
Sheriff - Santee Station	8	01:08	31	6.9
Carlton Hills Elementary	8.4	02:00	6	0.7
PRIDE Academy at Prospect Avenue	8.6	01:28	25	1
Santee Fire Station 5	8.9	01:08	46	2.4
Chet F. Harritt Elementary	9.9	01:44	22	0.7
State Hwy 52	10.2	01:12	71	22
Old Mission Dam	11.6	01:20	89	23.2

Service Layer Credits: Source: Esri, DigitalGlobe, GeoEye, Earthstar Geographics, CNES/Airbus DS, USDA, USCG, AeroGRID, IGN, and the GIS User Community
 Sources: Esri, HERE, Garmin, USGS, Intermap, INCREMENT P, NRCan, Esri Japan, METI, Esri China (Hong Kong), Swisstopo, Esri (Thailand), Swisstopo, Esri OpenStreetMap contributors, and the GIS User Community

San Vicente Dam Sunny Day Dam Breach Flood Arrival Times

This breach consists of a failure of both the San Vicente Dam and central overpour spillway
San Diego County, California
 State Dam ID: 8.009
 & National Dam ID: CA00113

Modeling Date: May-2019
 Map Creation Date: April-2020
 By: S. Wolfskill

Legend

Critical Structures

- Critical Road Point (Blue X)
- CalFire Facility (Red circle)
- Licensed Healthcare Facility (Blue cross)
- Law Enforcement Facility (Yellow star)
- School (Red triangle)

Other Symbols

- Critical Road (Dashed black line)
- Approx. Time to 1 Foot Depth (hrs:mins) (Black line)
- Cross Section (Yellow line)
- Flow Path (Blue dashed line)
- Approx. Maximum Flooding Extent (Black outline)
- Municipal Boundary (Dotted line)

Maximum Inundation Depth (ft)

- 1 to 2 (Light blue)
- 2 to 5 (Light green)
- 5 to 10 (Yellow-green)
- 10 to 20 (Yellow)
- 20+ (Red)

* Variations in color are dependent upon the background imagery.

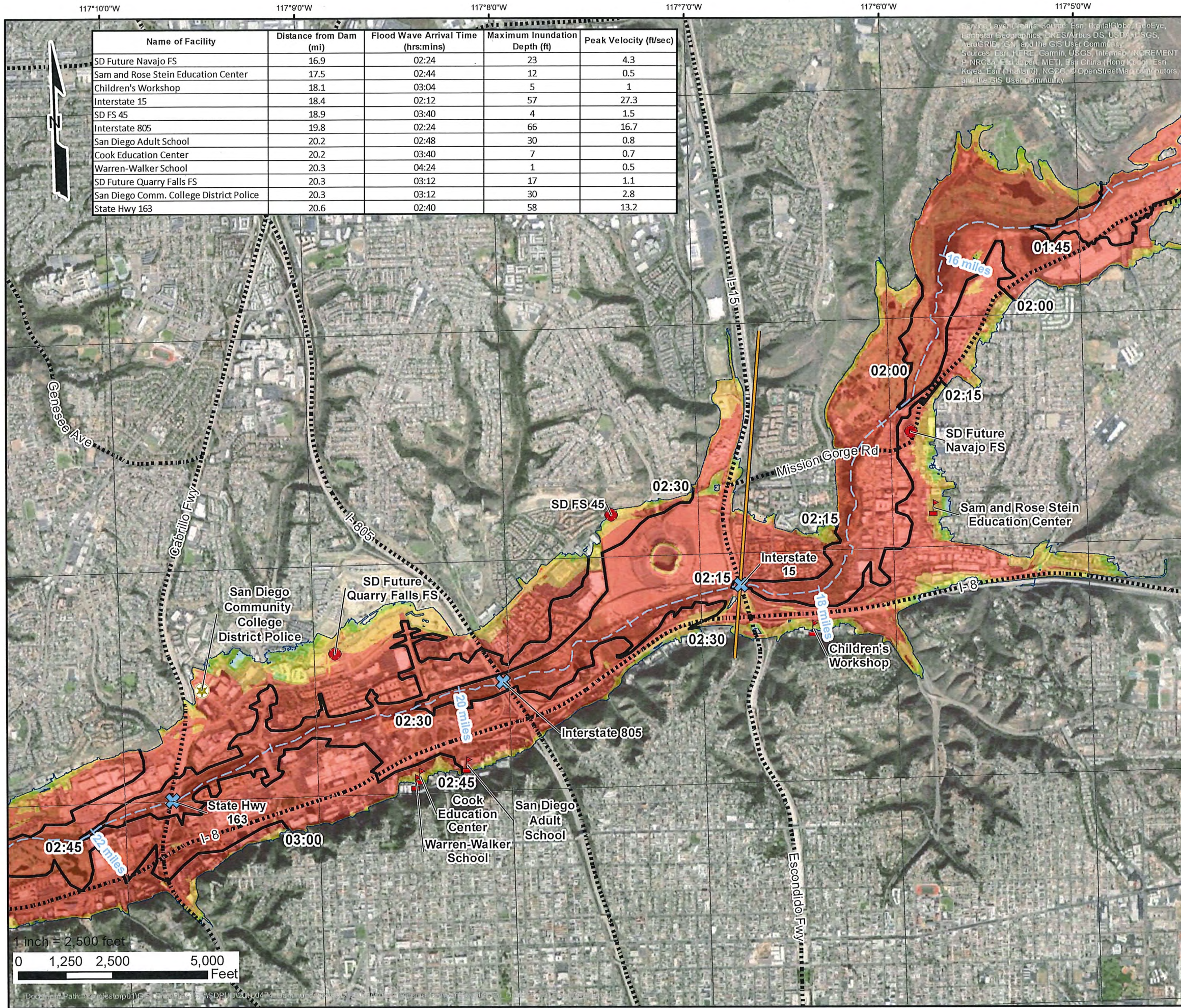
Notes:

- This inundation map has been prepared in a manner consistent with that level of care and skill ordinarily exercised by Kleinfelder's profession practicing in the same locality, under similar conditions and at the date services are provided. Our conclusions, opinions, and recommendations are based on a limited number of observations, data, and the current guidance and requirements outlined by the California DSOD.
- The information on this graphic representation has been compiled from a variety of sources and is subject to change without notice. Kleinfelder makes no representations or warranties, express or implied, as to accuracy, completeness, timeliness, or rights to the use of such information. The information shown on this map is approximate and should be used as a guideline for emergency response and preparation purposes. This document is not intended for use as a land survey project nor is it designed or intended as construction design document. The use or misuse of the information contained on this graphic representation is at the sole risk of the party using or misusing the information.
- All elevations are reported in the NAVD88 vertical datum.
- Inundation depths less than one foot are not shown.
- Mapped depths and arrival times will vary based on breach conditions, hydrologic conditions, modelling assumptions, and other factors. Emergency action plans that utilize these maps may want to consider a factor of safety for arrival times.

KLEINFELDER SD
 Bright People. Right Solutions.

550 West C Street,
 Suite 1200
 San Diego, CA 92101
 (619) 831-4600

Engineer: Elizabeth Bissonnette
 License No. C68830



Name of Facility	Distance from Dam (mi)	Flood Wave Arrival Time (hrs:mins)	Maximum Inundation Depth (ft)	Peak Velocity (ft/sec)
SD Future Navajo FS	16.9	02:24	23	4.3
Sam and Rose Stein Education Center	17.5	02:44	12	0.5
Children's Workshop	18.1	03:04	5	1
Interstate 15	18.4	02:12	57	27.3
SD FS 45	18.9	03:40	4	1.5
Interstate 805	19.8	02:24	66	16.7
San Diego Adult School	20.2	02:48	30	0.8
Cook Education Center	20.2	03:40	7	0.7
Warren-Walker School	20.3	04:24	1	0.5
SD Future Quarry Falls FS	20.3	03:12	17	1.1
San Diego Comm. College District Police	20.3	03:12	30	2.8
State Hwy 163	20.6	02:40	58	13.2

Service Layer Credits: Source: Esri, DigitalGlobe, GeoEye, Earthstar Geographics, CNES/Airbus DS, USDA, USGS, AeroGRID, IGN, and the GIS User Community
 Sources: Esri, HERE, Garmin, USGS, Intel, INCREMENT P, NRCan, Esri Japan, METI, Esri China (Hong Kong), Esri Korea, Esri (Thailand), NGPS, OpenStreetMap contributors, and the GIS User Community

San Vicente Dam Sunny Day Dam Breach Flood Arrival Times

This breach consists of a failure of both the San Vicente Dam and central overpour spillway
 San Diego County, California
 State Dam ID: 8.009
 & National Dam ID: CA00113



Modeling Date: May-2019
 Map Creation Date: April-2020
 By: S. Wolfskill

Legend

Critical Structures

- Critical Road Point
- CalFire Facility
- Licensed Healthcare Facility
- Law Enforcement Facility
- School

Critical Road

- Approx. Time to 1 Foot Depth (hrs:mins)
- Cross Section
- Flow Path
- Approx. Maximum Flooding Extent
- Municipal Boundary

Maximum Inundation Depth (ft)

- 1 to 2
- 2 to 5
- 5 to 10
- 10 to 20
- 20+

* Variations in color are dependent upon the background imagery.

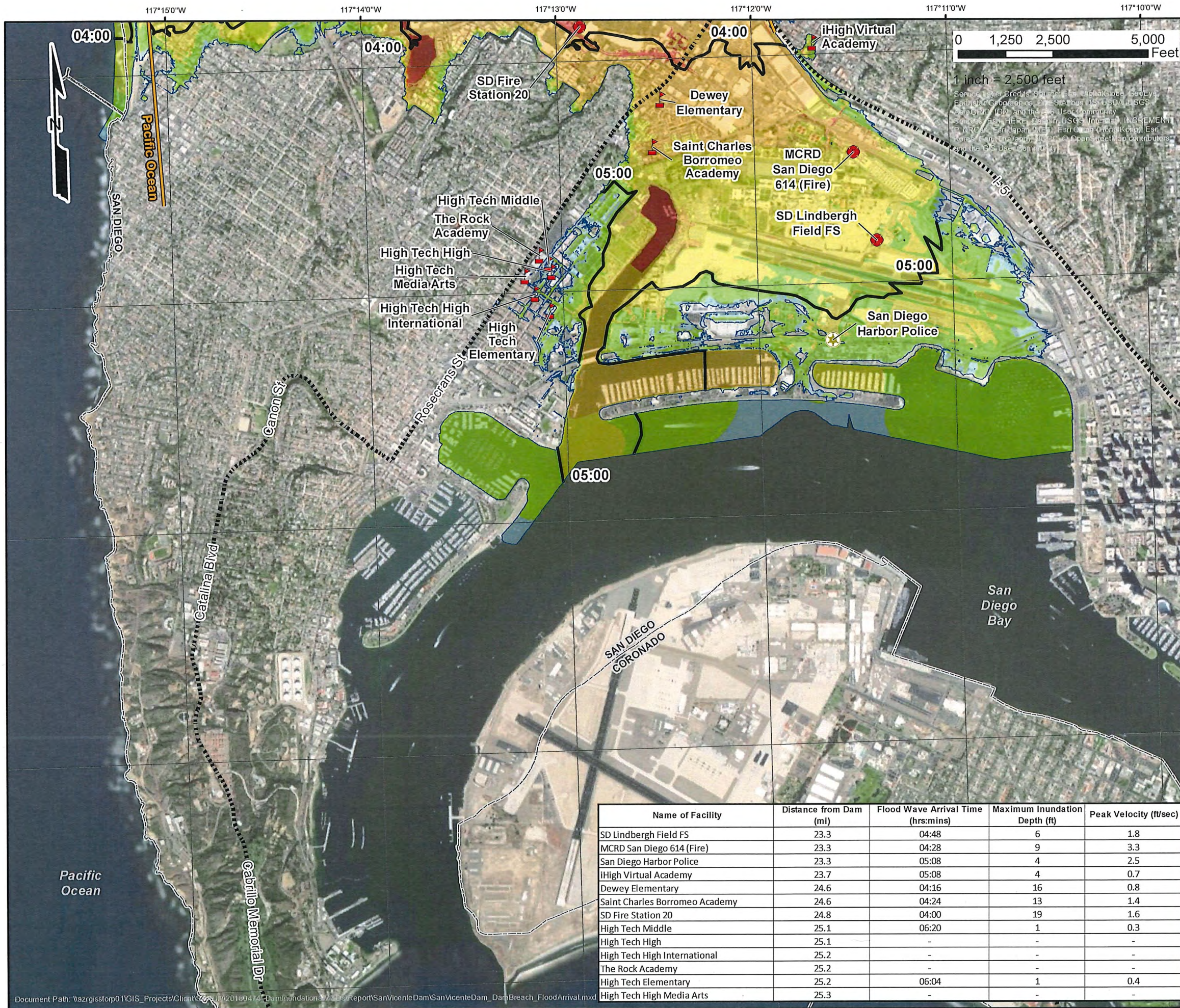
Notes:

- This inundation map has been prepared in a manner consistent with that level of care and skill ordinarily exercised by Kleinfielder's profession practicing in the same locality, under similar conditions and at the date services are provided. Our conclusions, opinions, and recommendations are based on a limited number of observations, data, and the current guidance and requirements outlined by the California DSOD.
- The information on this graphic representation has been compiled from a variety of sources and is subject to change without notice. Kleinfielder makes no representations or warranties, express or implied, as to accuracy, completeness, timeliness, or rights to the use of such information. The information shown on this map is approximate and should be used as a guideline for emergency response and preparation purposes. This document is not intended for use as a land survey project nor is it designed or intended as construction design document. The use or misuse of the information contained on this graphic representation is at the sole risk of the party using or misusing the information.
- All elevations are reported in the NAVD88 vertical datum.
- Inundation depths less than one foot are not shown.
- Mapped depths and arrival times will vary based on breach conditions, hydrologic conditions, modeling assumptions, and other factors. Emergency action plans that utilize these maps may want to consider a factor of safety for arrival times.

KLEINFELDER SD
 Bright People. Right Solutions.

550 West C Street,
 Suite 1200
 San Diego, CA 92101
 (619) 831-4600

Engineer: Elizabeth Bissonnette
 License No. C68830



San Vicente Dam
Sunny Day Dam Breach Flood Arrival Times
This breach consists of a failure of both the San Vicente Dam and central overpour spillway
 San Diego County, California
 State Dam ID: 8.009
 & National Dam ID: CA00113



Modeling Date: May-2019
 Map Creation Date: April-2020
 By: S. Wolfskill

Legend

Critical Structures

- Critical Road Point
- CalFire Facility
- Licensed Healthcare Facility
- Law Enforcement Facility
- School

Other Symbols

- Critical Road
- Approx. Time to 1 Foot Depth (hrs:mins)
- Cross Section
- Flow Path
- Approx. Maximum Flooding Extent
- Municipal Boundary

Maximum Inundation Depth (ft)

- 1 to 2
- 2 to 5
- 5 to 10
- 10 to 20
- 20+

* Variations in color are dependent upon the background imagery.

Notes:

- This inundation map has been prepared in a manner consistent with that level of care and skill ordinarily exercised by Kleinfelder's profession practicing in the same locality, under similar conditions and at the date services are provided. Our conclusions, opinions, and recommendations are based on a limited number of observations, data, and the current guidance and requirements outlined by the California DSOD.
- The information on this graphic representation has been compiled from a variety of sources and is subject to change without notice. Kleinfelder makes no representations or warranties, express or implied, as to accuracy, completeness, timeliness, or rights to the use of such information. The information shown on this map is approximate and should be used as a guideline for emergency response and preparation purposes. This document is not intended for use as a land survey project nor is it designed or intended as construction design document. The use or misuse of the information contained on this graphic representation is at the sole risk of the party using or misusing the information.
- All elevations are reported in the NAVD88 vertical datum.
- Inundation depths less than one foot are not shown.
- Mapped depths and arrival times will vary based on breach conditions, hydrologic conditions, modelling assumptions, and other factors. Emergency action plans that utilize these maps may want to consider a factor of safety for arrival times.

Name of Facility	Distance from Dam (mi)	Flood Wave Arrival Time (hrs:mins)	Maximum Inundation Depth (ft)	Peak Velocity (ft/sec)
SD Lindbergh Field FS	23.3	04:48	6	1.8
MCRD San Diego 614 (Fire)	23.3	04:28	9	3.3
San Diego Harbor Police	23.3	05:08	4	2.5
iHigh Virtual Academy	23.7	05:08	4	0.7
Dewey Elementary	24.6	04:16	16	0.8
Saint Charles Borromeo Academy	24.6	04:24	13	1.4
SD Fire Station 20	24.8	04:00	19	1.6
High Tech Middle	25.1	06:20	1	0.3
High Tech High	25.1	-	-	-
High Tech High International	25.2	-	-	-
The Rock Academy	25.2	-	-	-
High Tech Elementary	25.2	06:04	1	0.4
High Tech High Media Arts	25.3	-	-	-

KLEINFELDER SD
 Bright People. Right Solutions.

550 West C Street,
 Suite 1200
 San Diego, CA 92101
 (619) 831-4600

Engineer Elizabeth Bissonnette
 License No. C68830