

**San Vicente Dam
Sunny Day Saddle Dam Breach
Overview**
San Diego County, California
State Dam ID: 8.009
& National Dam ID: CA00113

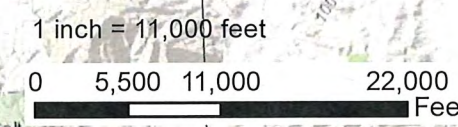


Modeling Date: May-2019
Map Creation Date: April-2020
By: J. Weber

- Legend**
- Cross Section
 - Flow Path
 - Detailed Sheet Extent
 - Approx. Maximum Flooding Extent

Notes:

1. This inundation map has been prepared in a manner consistent with that level of care and skill ordinarily exercised by Kleinfelder's profession practicing in the same locality, under similar conditions and at the date services are provided. Our conclusions, opinions, and recommendations are based on a limited number of observations, data, and the current guidance and requirements outlined by the California DSOD.
2. The information on this graphic representation has been compiled from a variety of sources and is subject to change without notice. Kleinfelder makes no representations or warranties, express or implied, as to accuracy, completeness, timeliness, or rights to the use of such information. The information shown on this map is approximate and should be used as a guideline for emergency response and preparation purposes. This document is not intended for use as a land survey project nor is it designed or intended as construction design document. The use or misuse of the information contained on this graphic representation is at the sole risk of the party using or misusing the information.
3. All elevations are reported in the NAVD88 vertical datum.
4. Inundation depths less than one foot are not shown.
5. Mapped depths and arrival times will vary based on breach conditions, hydrologic conditions, modeling assumptions, and other factors. Emergency action plans that utilize these maps may want to consider a factor of safety for arrival times.

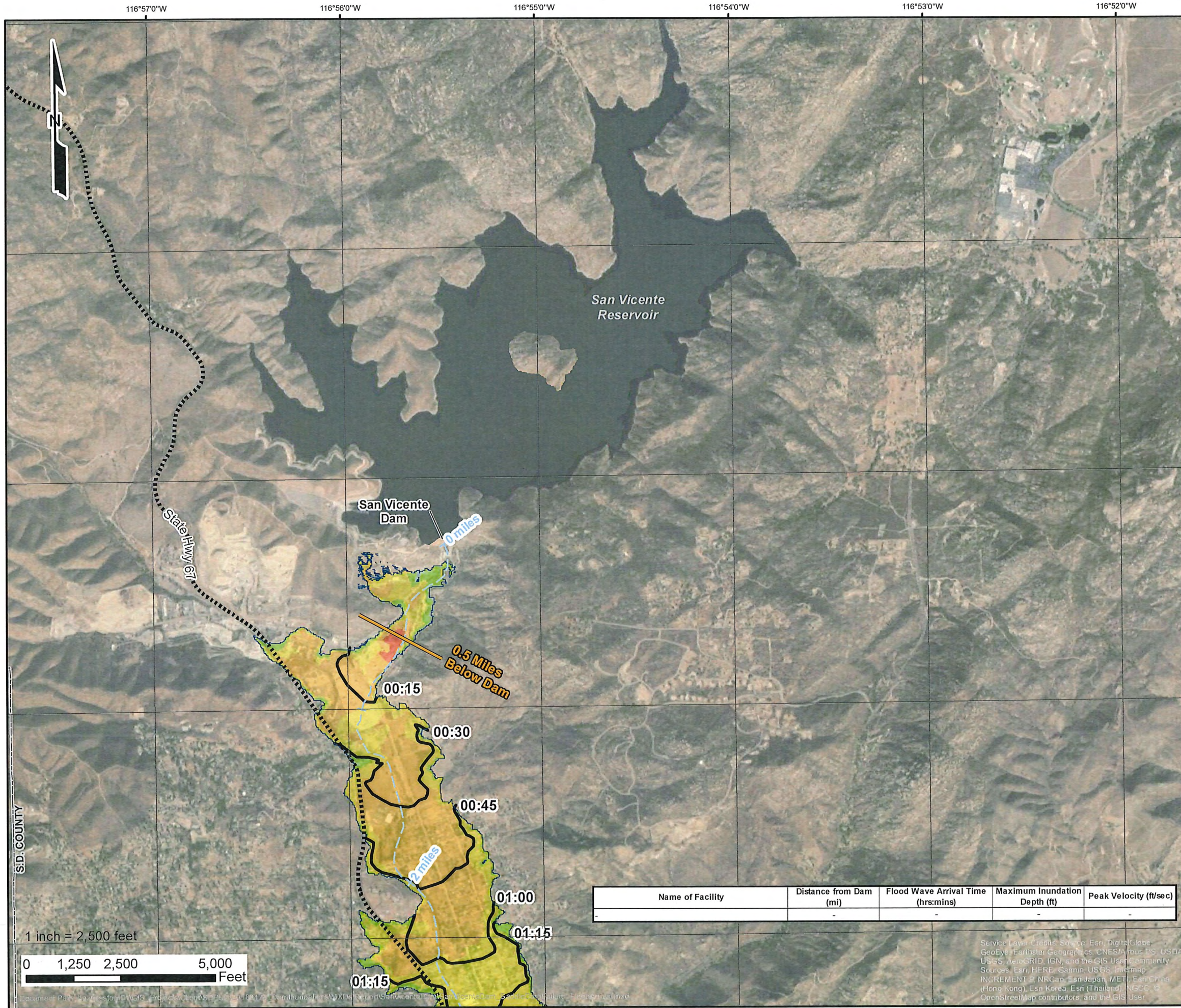


KLEINFELDER SD
Bright People. Right Solutions.

550 West C Street,
Suite 1200
San Diego, CA 92101
(619) 831-4600

Engineer Elizabeth Bissonette
License No. C68830

Service Layer Credits: Sources: Esri, HERE, Garmin, Intermap, increment P Corp., GEBCO, USGS, FAO, NPS, NRCAN, GeoBase, IGN, Kadaster NL, Ordnance Survey, Esri Japan, METI, Esri China (Hong Kong), swisstopo, OpenStreetMap contributors, and the GIS User Community
Sources: Esri, HERE, Garmin, USGS, Intermap, INCREMENT P, NRCan, Esri Japan, METI, Esri China (Hong Kong), Esri Korea, Esri (Thailand),



**San Vicente Dam
Sunny Day Saddle Dam Breach
Flood Arrival Times**
San Diego County, California
State Dam ID: 8.009
& National Dam ID: CA00113



Modeling Date: May-2019
Map Creation Date: April-2020
By: S. Wolfskill

Legend

Critical Structures

- Critical Road Point
- CalFire Facility
- Licensed Healthcare Facility
- Law Enforcement Facility
- School

Critical Road

Approx. Time to 1 Foot Depth (hrs:mins)

Cross Section

Flow Path

Approx. Maximum Flooding Extent

Municipal Boundary

Maximum Inundation Depth (ft)

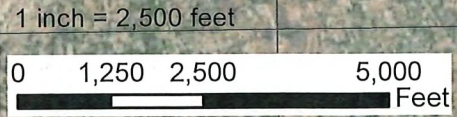
- 1 to 2
- 2 to 5
- 5 to 10
- 10 to 20
- 20+

* Variations in color are dependent upon the background imagery.

Notes:

- This inundation map has been prepared in a manner consistent with that level of care and skill ordinarily exercised by Kleinfielder's profession practicing in the same locality, under similar conditions and at the date services are provided. Our conclusions, opinions, and recommendations are based on a limited number of observations, data, and the current guidance and requirements outlined by the California DSOD.
- The information on this graphic representation has been compiled from a variety of sources and is subject to change without notice. Kleinfielder makes no representations or warranties, express or implied, as to accuracy, completeness, timeliness, or rights to the use of such information. The information shown on this map is approximate and should be used as a guideline for emergency response and preparation purposes. This document is not intended for use as a land survey project nor is it designed or intended as construction design document. The use or misuse of the information contained on this graphic representation is at the sole risk of the party using or misusing the information.
- All elevations are reported in the NAVD88 vertical datum.
- Inundation depths less than one foot are not shown.
- Mapped depths and arrival times will vary based on breach conditions, hydrologic conditions, modelling assumptions, and other factors. Emergency action plans that utilize these maps may want to consider a factor of safety for arrival times.

Name of Facility	Distance from Dam (mi)	Flood Wave Arrival Time (hrs:mins)	Maximum Inundation Depth (ft)	Peak Velocity (ft/sec)
-	-	-	-	-



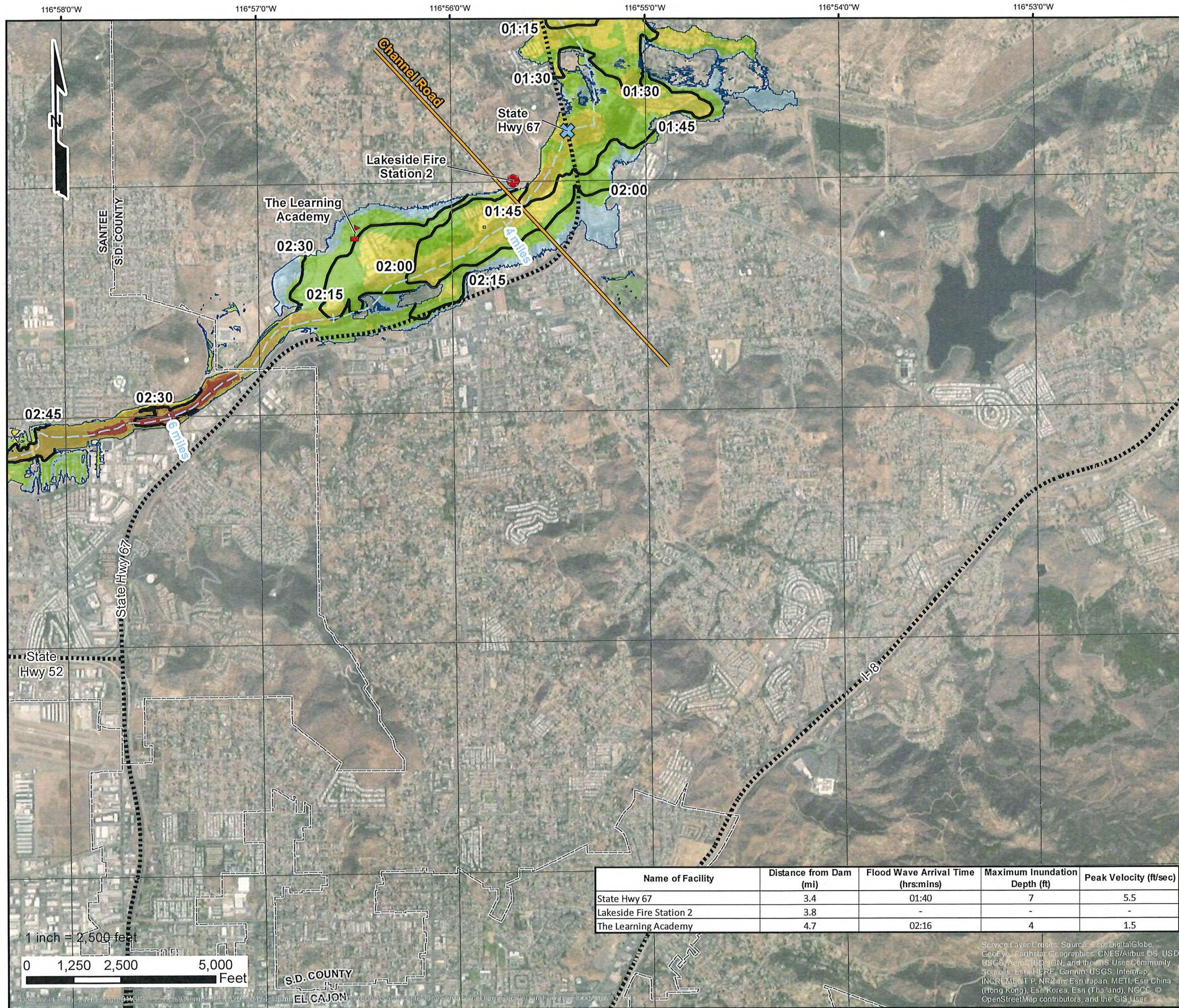
Service Layer Credits: Source: Esri, DigitalGlobe, GeoEye, Earthstar Geographics, CNES/Airbus DS, USDA, USGS, AeroGRID, IGN, and the GIS User Community
Sources: Esri, HERE, Garmin, USGS, Intermap, INCREMENT P, NRCan, Esri Japan, METI, Esri China (Hong Kong), Esri Korea, Esri (Thailand), NGCC, OpenStreetMap contributors, and the GIS User

KLEINFELDER SD
Bright People. Right Solutions.

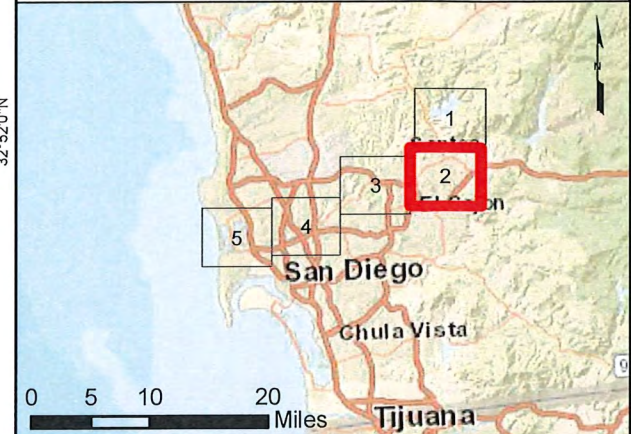
550 West C Street,
Suite 1200
San Diego, CA 92101
(619) 831-4600

Engineer, Elizabeth Bissonnette
License No. C68830





**San Vicente Dam
Sunny Day Saddle Dam Breach
Flood Arrival Times**
San Diego County, California
State Dam ID: 8.009
& National Dam ID: CA00113



Modeling Date: May-2019
Map Creation Date: April-2020
By: S. Wolfskill

Legend

Critical Structures

- Critical Road Point
- CalFire Facility
- Licensed Healthcare Facility
- Law Enforcement Facility
- School

Other Symbols

- Critical Road
- Approx. Time to 1 Foot Depth (hrs:mins)
- Cross Section
- Flow Path
- Approx. Maximum Flooding Extent
- Municipal Boundary

Maximum Inundation Depth (ft)

- 1 to 2
- 2 to 5
- 5 to 10
- 10 to 20
- 20+

* Variations in color are dependent upon the background imagery.

Notes:

1. This inundation map has been prepared in a manner consistent with that level of care and skill ordinarily exercised by Kleinfelder's profession practicing in the same locality, under similar conditions and at the date services are provided. Our conclusions, opinions, and recommendations are based on a limited number of observations, data, and the current guidance and requirements outlined by the California DSOD.
2. The information on this graphic representation has been compiled from a variety of sources and is subject to change without notice. Kleinfelder makes no representations or warranties, express or implied, as to accuracy, completeness, timeliness, or rights to the use of such information. The information shown on this map is approximate and should be used as a guideline for emergency response and preparation purposes. This document is not intended for use as a land survey project nor is it designed or intended as construction design document. The use or misuse of the information contained on this graphic representation is at the sole risk of the party using or misusing the information.
3. All elevations are reported in the NAVD88 vertical datum.
4. Inundation depths less than one foot are not shown.
5. Mapped depths and arrival times will vary based on breach conditions, hydrologic conditions, modelling assumptions, and other factors. Emergency action plans that utilize these maps may want to consider a factor of safety for arrival times.

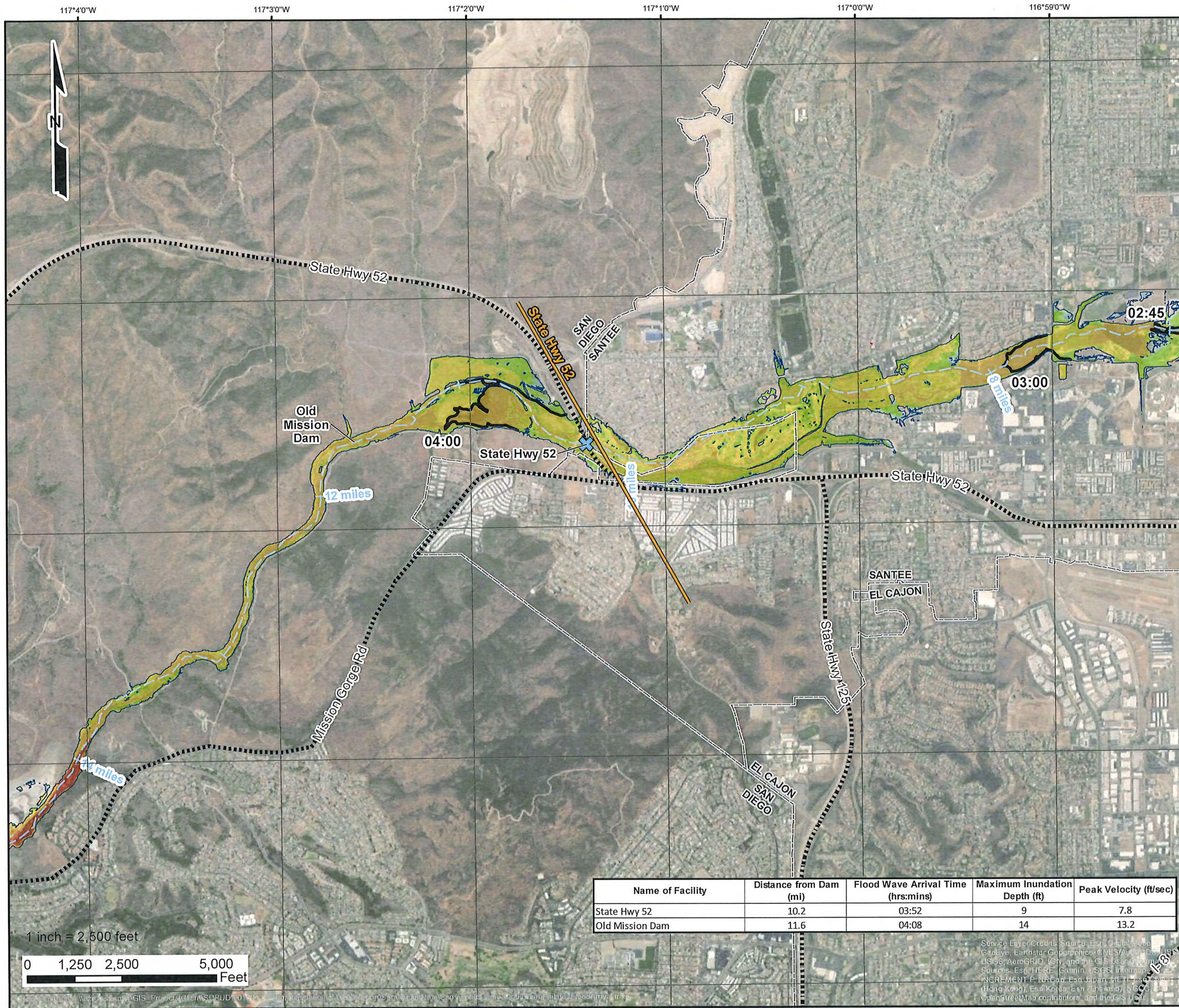
Name of Facility	Distance from Dam (mi)	Flood Wave Arrival Time (hrs:mins)	Maximum Inundation Depth (ft)	Peak Velocity (ft/sec)
State Hwy 67	3.4	01:40	7	5.5
Lakeside Fire Station 2	3.8	-	-	-
The Learning Academy	4.7	02:16	4	1.5

KLEINFELDER SD
Bright People. Right Solutions.

550 West C Street,
Suite 1200
San Diego, CA 92101
(619) 831-4600

Engineer: Elizabeth Bissonnette
License No. C68830

Service Layer Credits: Source: Esri, DigitalGlobe, GeoEye, Earthstar Geographics, CNES/Airbus DS, USDA, USGS, AeroGRID, IGN, and the GIS User Community
Sources: Esri, HERE, Garmin, USGS, Intermap, INCREMENT P, NRCan, Esri Japan, METI, Esri China (Hong Kong), Esri Korea, Esri (Thailand), NGCC, © OpenStreetMap contributors, and the GIS User



**San Vicente Dam
Sunny Day Saddle Dam Breach
Flood Arrival Times**
San Diego County, California
State Dam ID: 8.009
& National Dam ID: CA00113



Modeling Date: May-2019
Map Creation Date: April-2020
By: S. Wolfskill

Legend

Critical Structures

- Critical Road Point
- CalFire Facility
- Licensed Healthcare Facility
- Law Enforcement Facility
- School

Critical Road

- Approx. Time to 1 Foot Depth (hrs:mins)
- Cross Section
- Flow Path
- Approx. Maximum Flooding Extent
- Municipal Boundary

Maximum Inundation Depth (ft)

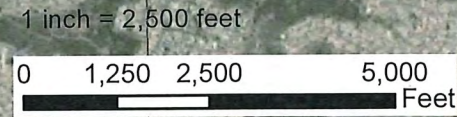
- 1 to 2
- 2 to 5
- 5 to 10
- 10 to 20
- 20+

* Variations in color are dependent upon the background imagery.

Notes:

- This inundation map has been prepared in a manner consistent with that level of care and skill ordinarily exercised by Kleinfelder's profession practicing in the same locality, under similar conditions and at the date services are provided. Our conclusions, opinions, and recommendations are based on a limited number of observations, data, and the current guidance and requirements outlined by the California DSOD.
- The information on this graphic representation has been compiled from a variety of sources and is subject to change without notice. Kleinfelder makes no representations or warranties, express or implied, as to accuracy, completeness, timeliness, or rights to the use of such information. The information shown on this map is approximate and should be used as a guideline for emergency response and preparation purposes. This document is not intended for use as a land survey project nor is it designed or intended as construction design document. The use or misuse of the information contained on this graphic representation is at the sole risk of the party using or misusing the information.
- All elevations are reported in the NAVD88 vertical datum.
- Inundation depths less than one foot are not shown.
- Mapped depths and arrival times will vary based on breach conditions, hydrologic conditions, modeling assumptions, and other factors. Emergency action plans that utilize these maps may want to consider a factor of safety for arrival times.

Name of Facility	Distance from Dam (mi)	Flood Wave Arrival Time (hrs:mins)	Maximum Inundation Depth (ft)	Peak Velocity (ft/sec)
State Hwy 52	10.2	03:52	9	7.8
Old Mission Dam	11.6	04:08	14	13.2

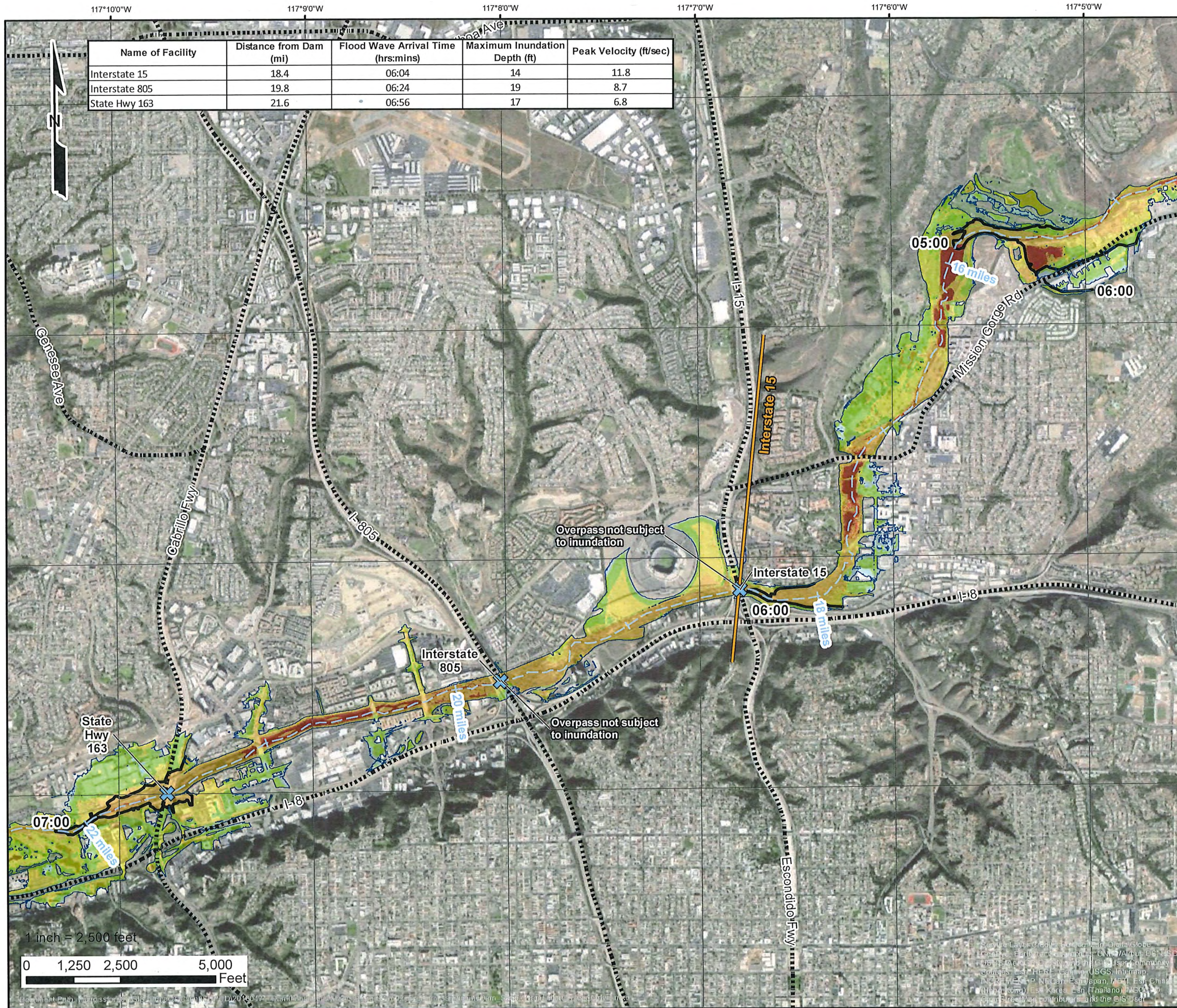


Service Layer Credits: Source: Esri, DigitalGlobe, GeoEye, Earthstar Geographics, CNES/Airbus DS, USDA, USGS, AeroGRID, IGN, and the GIS User Community
Sources: Esri, HERE, Garmin, USGS, Intermap, INCREMENT P, NRCan, Esri Japan, METI, Esri China (Hong Kong), Esri Korea, Esri (Thailand), NICTD, OpenStreetMap contributors, and the GIS User Community

KLEINFELDER SD
Bright People. Right Solutions.

550 West C Street,
Suite 1200
San Diego, CA 92101
(619) 831-4600

Engineer: Elizabeth Bissonnette
License No. C68830



Name of Facility	Distance from Dam (mi)	Flood Wave Arrival Time (hrs:mins)	Maximum Inundation Depth (ft)	Peak Velocity (ft/sec)
Interstate 15	18.4	06:04	14	11.8
Interstate 805	19.8	06:24	19	8.7
State Hwy 163	21.6	06:56	17	6.8

San Vicente Dam Sunny Day Saddle Dam Breach Flood Arrival Times

San Diego County, California
State Dam ID: 8.009
& National Dam ID: CA00113



Modeling Date: May-2019
Map Creation Date: April-2020
By: S. Wolfskill

Legend

Critical Structures

- Critical Road Point
- CalFire Facility
- Licensed Healthcare Facility
- Law Enforcement Facility
- School

Critical Road

- Approx. Time to 1 Foot Depth (hrs:mins)
- Cross Section
- Flow Path
- Approx. Maximum Flooding Extent
- Municipal Boundary

Maximum Inundation Depth (ft)

- 1 to 2
- 2 to 5
- 5 to 10
- 10 to 20
- 20+

* Variations in color are dependent upon the background imagery.

Notes:

- This inundation map has been prepared in a manner consistent with that level of care and skill ordinarily exercised by Kleinfelder's profession practicing in the same locality, under similar conditions and at the date services are provided. Our conclusions, opinions, and recommendations are based on a limited number of observations, data, and the current guidance and requirements outlined by the California DSOD.
- The information on this graphic representation has been compiled from a variety of sources and is subject to change without notice. Kleinfelder makes no representations or warranties, express or implied, as to accuracy, completeness, timeliness, or rights to the use of such information. The information shown on this map is approximate and should be used as a guideline for emergency response and preparation purposes. This document is not intended for use as a land survey project nor is it designed or intended as construction design document. The use or misuse of the information contained on this graphic representation is at the sole risk of the party using or misusing the information.
- All elevations are reported in the NAVD88 vertical datum.
- Inundation depths less than one foot are not shown.
- Mapped depths and arrival times will vary based on breach conditions, hydrologic conditions, modeling assumptions, and other factors. Emergency action plans that utilize these maps may want to consider a factor of safety of arrival times.

KLEINFELDER SD
Bright People. Right Solutions.

550 West C Street,
Suite 1200
San Diego, CA 92101
(619) 831-4600

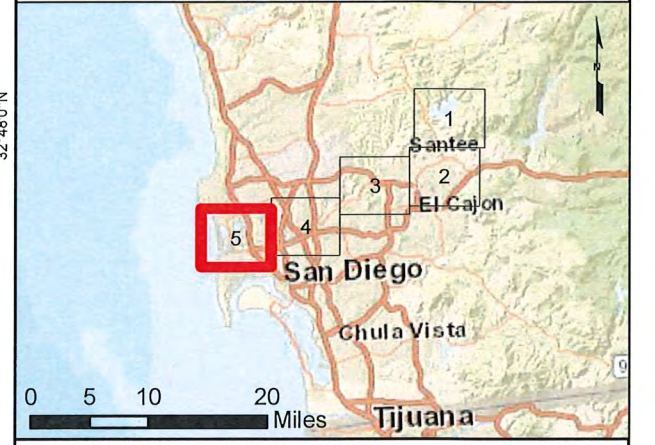
Engineer: Elizabeth Bissonnette
License No. C68830

LICENSED PROFESSIONAL ENGINEER
ELIZABETH BISSONNETTE
C68830
STATE OF CALIFORNIA
CIVIL

117°16'0"W 117°15'0"W 117°14'0"W 117°13'0"W 117°12'0"W 117°11'0"W

Name of Facility	Distance from Dam (mi)	Flood Wave Arrival Time (hrs:mins)	Maximum Inundation Depth (ft)	Peak Velocity (ft/sec)
SD Future West Mission Valley FS	23.6	-	-	-
Interstate 5	24.1	07:48	13	4.1

**San Vicente Dam
Sunny Day Saddle Dam Breach
Flood Arrival Times**
San Diego County, California
State Dam ID: 8.009
& National Dam ID: CA00113



Modeling Date: May-2019
Map Creation Date: April-2020
By: S. Wolfskill

Legend

Critical Structures

- Critical Road Point
- CalFire Facility
- Licensed Healthcare Facility
- Law Enforcement Facility
- School

Critical Road

- Approx. Time to 1 Foot Depth (hrs:mins)
- Cross Section
- Flow Path
- Approx. Maximum Flooding Extent
- Municipal Boundary

Maximum Inundation Depth (ft)

- 1 to 2
- 2 to 5
- 5 to 10
- 10 to 20
- 20+

* Variations in color are dependent upon the background imagery.

Notes:

- This inundation map has been prepared in a manner consistent with that level of care and skill ordinarily exercised by Kleinfielder's profession practicing in the same locality, under similar conditions and at the date services are provided. Our conclusions, opinions, and recommendations are based on a limited number of observations, data, and the current guidance and requirements outlined by the California DSOD.
- The information on this graphic representation has been compiled from a variety of sources and is subject to change without notice. Kleinfielder makes no representations or warranties, express or implied, as to accuracy, completeness, timeliness, or rights to the use of such information. The information shown on this map is approximate and should be used as a guideline for emergency response and preparation purposes. This document is not intended for use as a land survey project nor is it designed or intended as construction design document. The use or misuse of the information contained on this graphic representation is at the sole risk of the party using or misusing the information.
- All elevations are reported in the NAVD88 vertical datum.
- Inundation depths less than one foot are not shown.
- Mapped depths and arrival times will vary based on breach conditions, hydrologic conditions, modeling assumptions, and other factors. Emergency action plans that utilize these maps may want to consider a factor of safety for arrival times.



Mapped depths and arrival times downgradient of I-5 vary more significantly as a result of tidal influences, hydraulic factors, and specific model assumptions. Please refer to text for additional information.

Overpass not subject to inundation



Document Path: Wazgisstorp01\GIS_Projects\Clien\SDPUD\20180478\..._SunnyDayDamBreach_FloodArrival.mxd

KLEINFELDER SD
Bright People. Right Solutions.

550 West C Street,
Suite 1200
San Diego, CA 92101
(619) 831-4600

Engineer: Elizabeth Bissonnette
License No. C68830