



# Redistricting Commission Basics

[www.sandiego.gov/redistricting-commission](http://www.sandiego.gov/redistricting-commission)



# What does Redistricting entail for the City of San Diego?

Drawing new boundaries that determine which San Diegans are represented in each of the 9 Council Districts.

**Representation**

**Census**



**Redistricting**

# Why Do We Redraw Council District Boundaries?

- ➡ Federal and state laws require district boundaries to be redrawn to reflect new population data. This takes place every 10 years based on the federal census data.
- ➡ Communities throughout the city change. Some residents move away, while others transfer to San Diego.
- ➡ To adjust for population densities so each Council district is approximately one-ninth of the total population of the City of San Diego.
- ➡ To ensure fair and equitable representation.



# Meet the Commissioners

The Commissioners were appointed by the Appointing Authority, comprised of three retired judges of the San Diego Superior Court. The judges chose from over 100 applicants, with one representative from each of the nine Council districts.



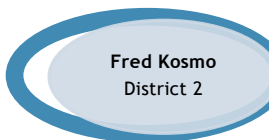
**Val Hoy**  
District 1



**Ken Malbrough**  
Vice Chair  
District 4



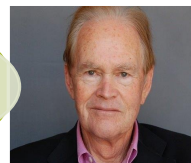
**Justine Nielsen**  
District 7



**Fred Kosmo**  
District 2



**Alan Nevin**  
District 5



**Monica Hernandez**  
District 8



**Tom Hebrank**  
Chair  
District 9



**Roy MacPhail**  
District 3



**Mitz Lee**  
District 6





# Commission Responsibilities

- ➡ Promote community outreach and encourage public participation.
- ➡ Conduct Commission hearings that allow for public comment.
- ➡ Draft and finalize boundary maps for all 9 Council Districts.
- ➡ Promote a transparent and inclusive redistricting process.



# City Charter Redistricting Parameters

The plan shall provide fair and effective representation for all San Diegans.

To the extent as practical, districts shall:

- ❖ Contain as nearly as practicable one-ninth of the total City of San Diego population.
- ❖ Preserve identifiable communities of interest.
- ❖ Be geographically compact and bounded by natural boundaries, street lines and/or City boundary lines.
- ❖ Be composed of contiguous territory with reasonable access between population centers in the district.
- ❖ Not be drawn up for the purpose of advantaging or protecting incumbents.



# When will the Commission Receive the Census Data?



- The Census Bureau released “Legacy Format” data (a raw, not user-friendly format) for redistricting on August 12.
- A user-friendly version was released in late August, with the final, fully formatted data expected to be released after September 20.
- Final maps must be submitted to the Registrar of Voters by December 15, 2021 in order to prepare for the June 2022 primary election.

# We Want to Hear from You!

The Redistricting Commission meets virtually on the 3<sup>rd</sup> Thursday of the month at 3 p.m. In addition, 9 public hearings will take place each week in the months of August and September. Although these 9 community hearings will focus on a specific Council district, all residents are welcome to participate, regardless of where they live in the City of San Diego.

In order to help prepare residents in advance for the 9 meetings, the following community mapping materials are available on the Redistricting Commission website:

- **NEW** - District Mapping Tool is now available!
- **UPDATED** - Council District Population Table (*using 2020 Census data output from Districtr*)
- **UPDATED** - Council District Map
- Criteria for Redrawing the Lines



# Community Mapping Materials



## 6 Things to Consider When Redrawing the Lines

### 1 Equal Population

Each Council District should contain roughly 1/9 of the city's population.

### 2 Contiguity

Council Districts should be composed of contiguous territory.

### 3 Geographically Compact

Council Districts should be geographically compact so nearby areas of population aren't bypassed for more distant populations.

### 4 Communities of Interest

Council Districts should try to preserve communities who have similar legislative concerns who could therefore benefit from cohesive representation.

### 5 Reasonable Access

Council Districts should provide reasonable access between population centers.

### 6 Natural Boundaries

Council Districts should be bounded by natural boundaries, street lines and/or City boundary lines.

For more information about the City of San Diego Redistricting Commission, please go to [www.sandiego.gov/redistricting-commission](http://www.sandiego.gov/redistricting-commission). If you have questions or need translation services, please email [redistricting2020@saniego.gov](mailto:redistricting2020@saniego.gov) (3) three business days in advance.



## Deviation from Ideal District Size Based on 2020 Census Legacy Format Data (Using new District Mapping Tool)

The following table is based on the 2020 Census Legacy Format redistricting file released on August 12. The population totals and deviations from the ideal 1/9th of the city population were obtained from the Commission's DistrictR mapping tool. There will be a final update to these figures after the release of the California Statewide Database shortly after September 20, 2021.

San Diego City Council Districts - Demographic Information

NOTE: These are LEGACY FORMAT 2020 Census Population Counts

Figures will be updated after September 20 with figures from the California Statewide Database

2020 Legacy Census Format (as tallied from DistrictR application)			
Total Population	Deviation	% Deviation	Pop. Change Since 2010 Census
1	166,413	12,207	7.89%
2	149,653	(4,453)	-2.89%
3	161,846	7,740	5.02%
4	144,976	(9,130)	-5.92%
5	158,511	4,405	2.86%
6	152,076	(2,030)	-1.32%
7	159,168	5,062	3.28%
8	148,789	(5,317)	-3.45%
9	145,525	(8,581)	-5.57%
Total	1,386,957		
Divided by 9	154,106		
Largest Positive Population Deviation:		7.89%	(District 1)
Largest Negative Population Deviation:		5.92%	(District 4)
Total Deviation		13.91%	

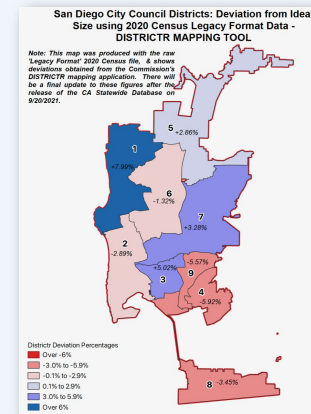
Source: Census 2020 Legacy Data, within DistrictR application.  
This table will be updated after release of the CA Statewide Database release (expected after September 20, 2021).  
Totals will change slightly.

To submit your feedback and to draw your ideal community boundary lines, please go to <https://bit.ly/sdmapping>. To learn more about the City of San Diego Redistricting Commission, please visit [www.sandiego.gov/redistricting-commission](http://www.sandiego.gov/redistricting-commission). If you have questions or need translation services, please email [redistricting2020@saniego.gov](mailto:redistricting2020@saniego.gov) (3) three business days in advance.



## District Deviations Based on 2020 'Legacy Format' Census Data (PRELIMINARY ANALYSIS)

The following map is based on the 2020 Census legacy format data as described in the previous slide. This map simply provides a rough estimate of which districts *might* need to grow in size, and which *might* need to shrink in order to get closer to the ideal one-ninth size.



How would you draw the new City Council districts? To submit your input and to draw your ideal community boundaries, please go to: <https://bit.ly/sdmapping>. If you have questions or need translation services, please email [redistricting2020@saniego.gov](mailto:redistricting2020@saniego.gov) (3) three business days in advance.

If you haven't done so already, please go to <https://bit.ly/sdmapping> to submit your proposed map and community of interest feedback.





## 6 Things to Consider When Redrawing the Lines

1

### Equal Population

Each Council District should contain roughly 1/9 of the city's population.

2

### Contiguity

Council Districts should be composed of contiguous territory.

3

### Geographically Compact

Council Districts should be geographically compact so nearby areas of population aren't bypassed for more distant populations.

4

### Communities of Interest

Council Districts should try to preserve communities who have similar legislative concerns who could therefore benefit from cohesive representation.

5

### Reasonable Access

Council Districts should provide reasonable access between population centers.

6

### Natural Boundaries

Council Districts should be bounded by natural boundaries, street lines and/or City boundary lines.



## Deviation from Ideal District Size Based on 2020 Census Legacy Format Data (Using new District MappingTool)

The following table is based on the 2020 Census Legacy Format redistricting file released on August 12. The population totals and deviations from the ideal 1/9th of the city population were obtained from the Commission's DistrictR mapping tool. There will be a final update to these figures after the release of the California Statewide Database shortly after September 20, 2021

### San Diego City Council Districts - Demographic Information

NOTE: These are LEGACY FORMAT 2020 Census Population Counts

Figures will be updated after September 20 with figures from the California Statewide Database

#### 2020 Legacy Census Format (as tallied from DistrictR application)

Total Population	Deviation	% Deviation	Pop. Change Since 2010 Census	
1	166,413	12,307	7.99%	18,732 12.7%
2	149,653	(4,453)	-2.89%	7,465 5.3%
3	161,846	7,740	5.02%	14,377 9.7%
4	144,976	(9,130)	-5.92%	2,200 1.5%
5	158,511	4,405	2.86%	14,142 9.8%
6	152,076	(2,030)	-1.32%	11,782 8.4%
7	159,168	5,062	3.28%	12,096 8.2%
8	148,789	(5,317)	-3.45%	3,934 2.7%
9	145,525	(8,581)	-5.57%	612 0.4%
Total	1,386,957			85,340 6.6%
Divided by 9	154,106			

Largest Positive Population Deviation: 7.99% (District 1)

Largest Negative Population Deviation: 5.92% (District 4)

Total Deviation 13.91%

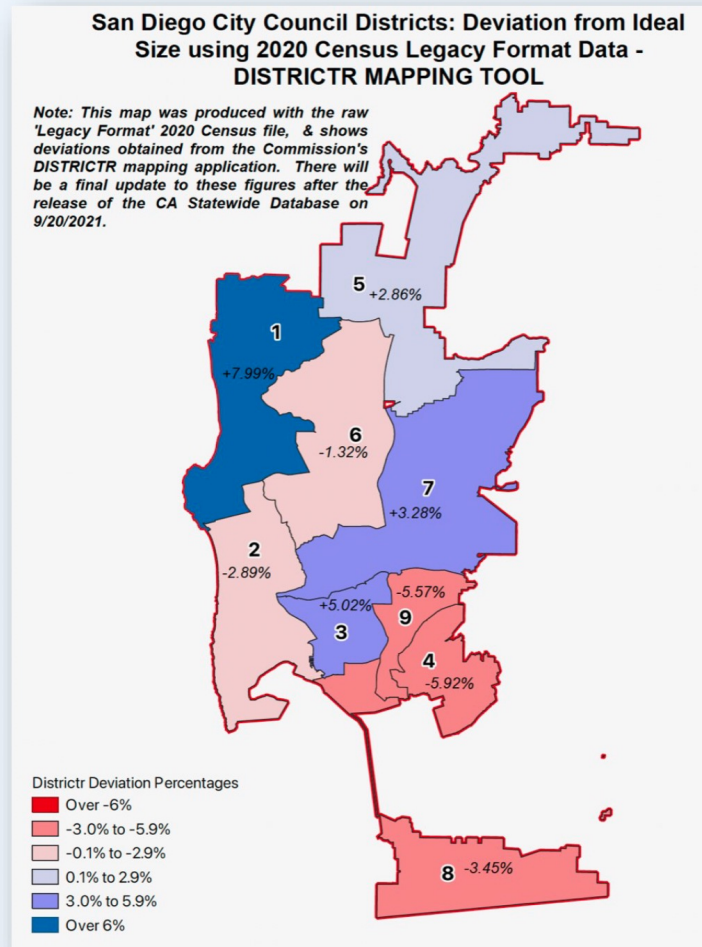
Source: Census 2020 Legacy Data, within DistrictR application.

This table will be updated after release of the CA Statewide Database release (expected after September 20, 2021).

Totals will change slightly.

To submit your feedback and to draw your ideal community boundary lines, please go to <https://bit.ly/sdmapping>. To learn more about the City of San Diego Redistricting Commission, please visit [www.sandiego.gov/redistricting-commission](http://www.sandiego.gov/redistricting-commission). If you have questions or need translation services, please email [redistricting2020@sandiego.gov](mailto:redistricting2020@sandiego.gov) (3) three business days in advance.

The following map is based on the 2020 Census legacy format data as described in the previous slide. This map simply provides a rough estimate of which districts *might* need to grow in size, and which *might* need to shrink in order to get closer to the ideal one-ninth size.



# New Districtr Mapping Tool Now Available - with 2020 Census Data

- ▶ Draw your districts and instantly see population size and racial composition information change as you draw them.
- ▶ Current Council Districts, Community Planning Group Areas, neighborhood and School District boundaries are provided to help you navigate the map - but you do not need to use these boundaries to create your own map.
- ▶ Save your maps as a web bookmark, share them with friends and community members, and when complete submit them to the Commission for consideration.
- ▶ Video tutorials showing how to use Districtr are on the website.



# New Districtr Mapping Tool - Introduction

The screenshot shows the Redistricting Commission website. The header includes navigation tabs: Redistricting Commission Home, Map Your Own Districts, Meet the Commissioners, Participating During COVID, Meetings, Calendar, and Current Maps. The main heading is 'Map Your Own Districts'. Below it, a message states: 'A link to our new [redistricting mapping tool](#) is available!'. The tool interface features a map of San Diego with colored districts and a 'Population Balance' legend. The legend lists population values for various districts and an ideal value. Below the legend, it shows 'UNASSIGNED POPULATION: 3' and 'MAX. POPULATION DEVIATION: 7.99%'. At the bottom, a note reads: 'Before you start creating your new City Council districts, please read the information below: The redistricting mapping tool allows you to create your own map of new City Council districts using 2020 census data. The tool allows you to see how many residents are assigned to each district that you create and...

District Color	Population
Blue	166,413
Orange	149,653
Green	161,843
Light Green	144,976
Pink	158,511
Purple	152,076
Teal	159,168
Light Purple	148,789
Red	145,525
Ideal	154,106.33

UNASSIGNED POPULATION: 3  
MAX. POPULATION DEVIATION: 7.99%

Please go tour website at <https://www.sandiego.gov/redistricting-commission> and click on the “Map Your Own Districts” tab to read the introduction to the new mapping tool first.

Then use the link at the top of the page to directly access the Districtr redistricting mapping tool (<https://bit.ly/sdmapping>)



# New Districtr Mapping Tool - Sample Screens

Let your voice be heard as we prepare to redraw the nine City Council districts to ensure fair and equitable representation across the City of San Diego.

This process takes place independently of the Mayor and City Council through the City of San Diego Redistricting Commission, a nonpartisan group of nine volunteers, one from each of the Council Districts. Use this portal to submit public comments to the Commission, and tell them what is important to know as they draw the new Council District lines!

You can provide your thoughts to the Commission by providing written testimony, by drawing your own districting plan (partial or whole), or by submitting a community of interest map.

What is...

## Intro to Redistricting (5 mins)



Written Testimony

a Districting Plan

A Community of Interest (COI)

**Districing plans** are maps that define the borders of the nine San Diego City Council districts. These district boundaries determine how you and your community are represented in the City Council. Our redistricting rules include requiring very close to equal population per district (One Person, One Vote) as well as rules providing opportunities for minority groups to elect candidates of choice (the Voting Rights Act). Additionally, the council districts should be reasonably shaped (compact), each district should be one connected piece (contiguous), communities of interest should be preserved as much as possible, and districts should be bounded by natural boundaries, street lines, and/or City boundary lines.

For more information on drawing districts, jump to [How to Draw a Map](#)

Please go to <https://bit.ly/sdmapping> to access the Districtr Mapping Tool

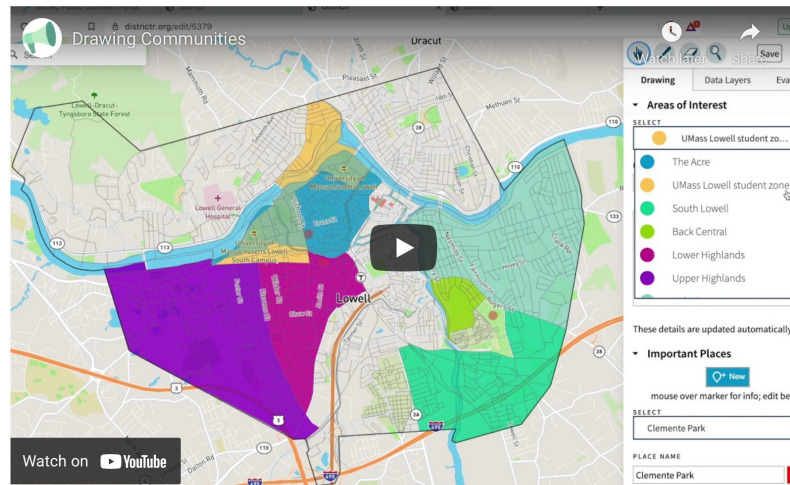
# New Districtr Mapping Tool - Sample Screens

## How to Draw a Map

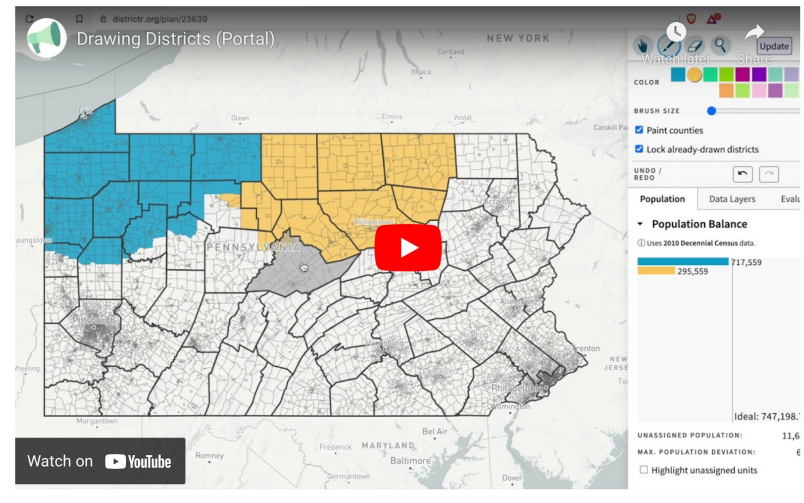
You can use [Districtr](#) to draw your plan or your Community of Interest. Districtr is free, open-source software designed just for public input in the redistricting process. When you've drawn your map, click the "Save" button and you'll find a submission link that will take you back to this form with your mapping data pre-filled.

Need help getting started? Here are some video tutorials.

### Drawing Communities (5 mins)

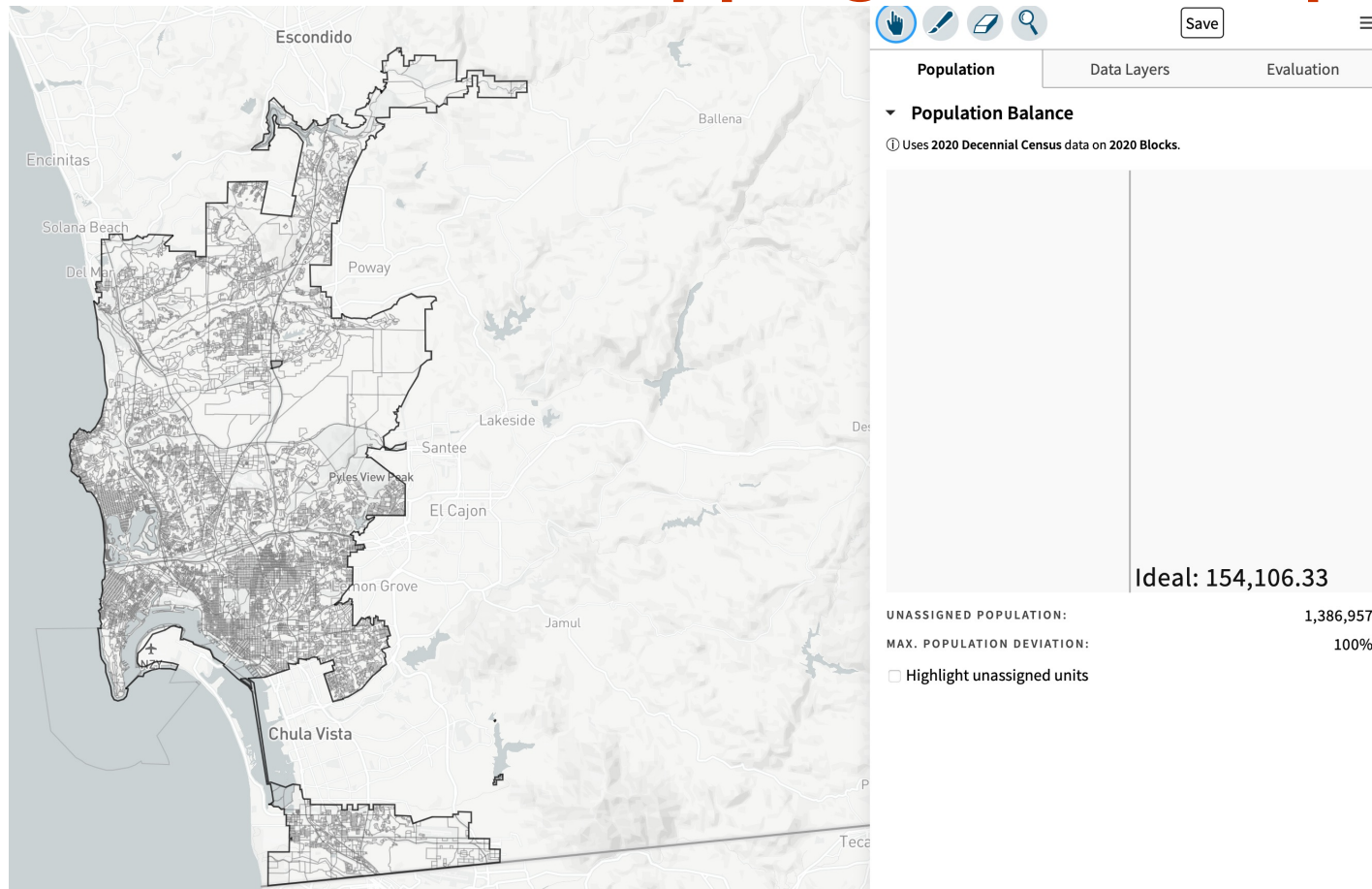


### Drawing Districts (5 mins)



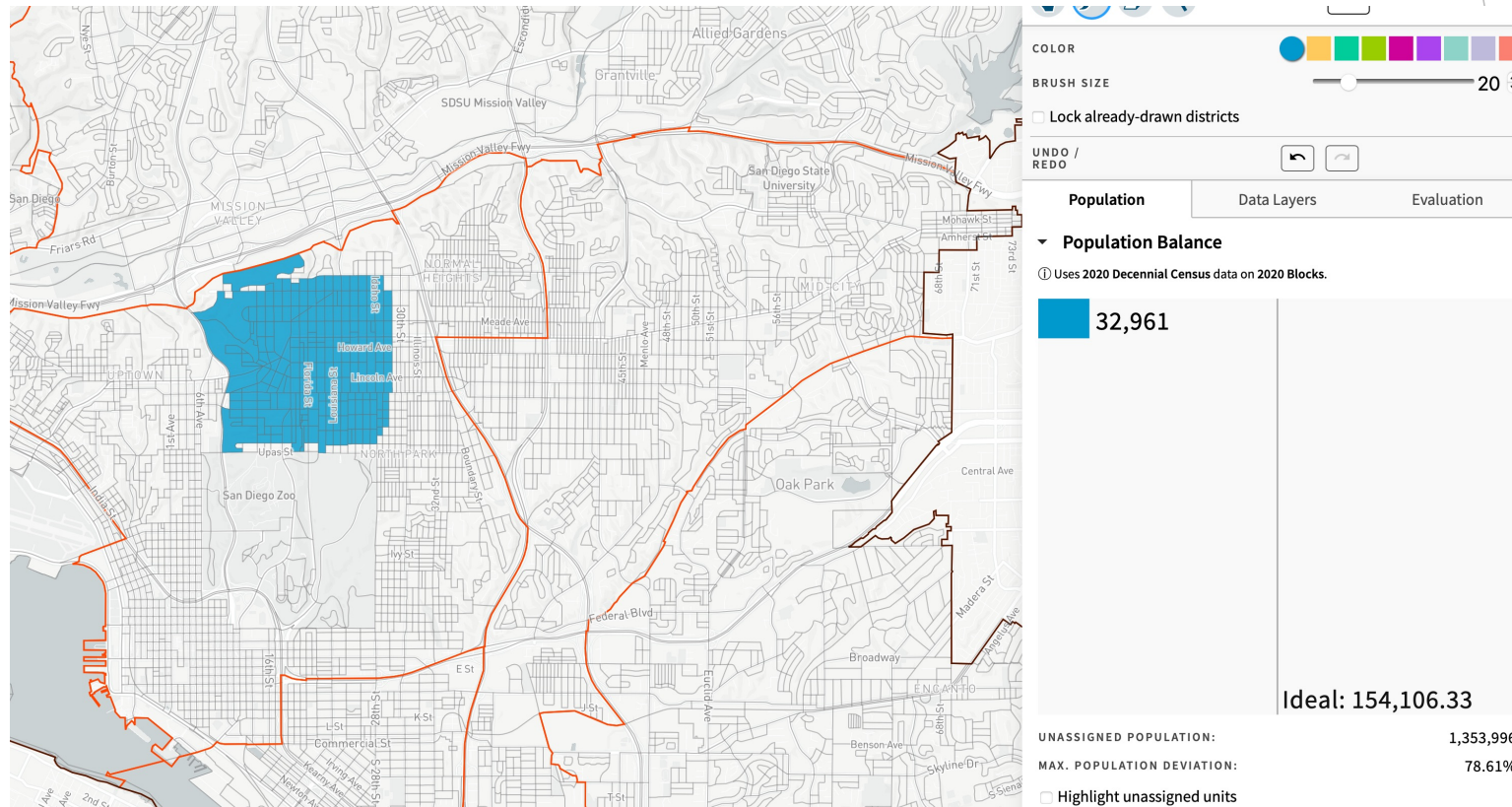
Please go to <https://bit.ly/sdmapping> to access the Districtr Mapping Tool

# New Districtr Mapping Tool - Sample Screens



Please go to <https://bit.ly/sdmapping> to access the Districtr Mapping Tool

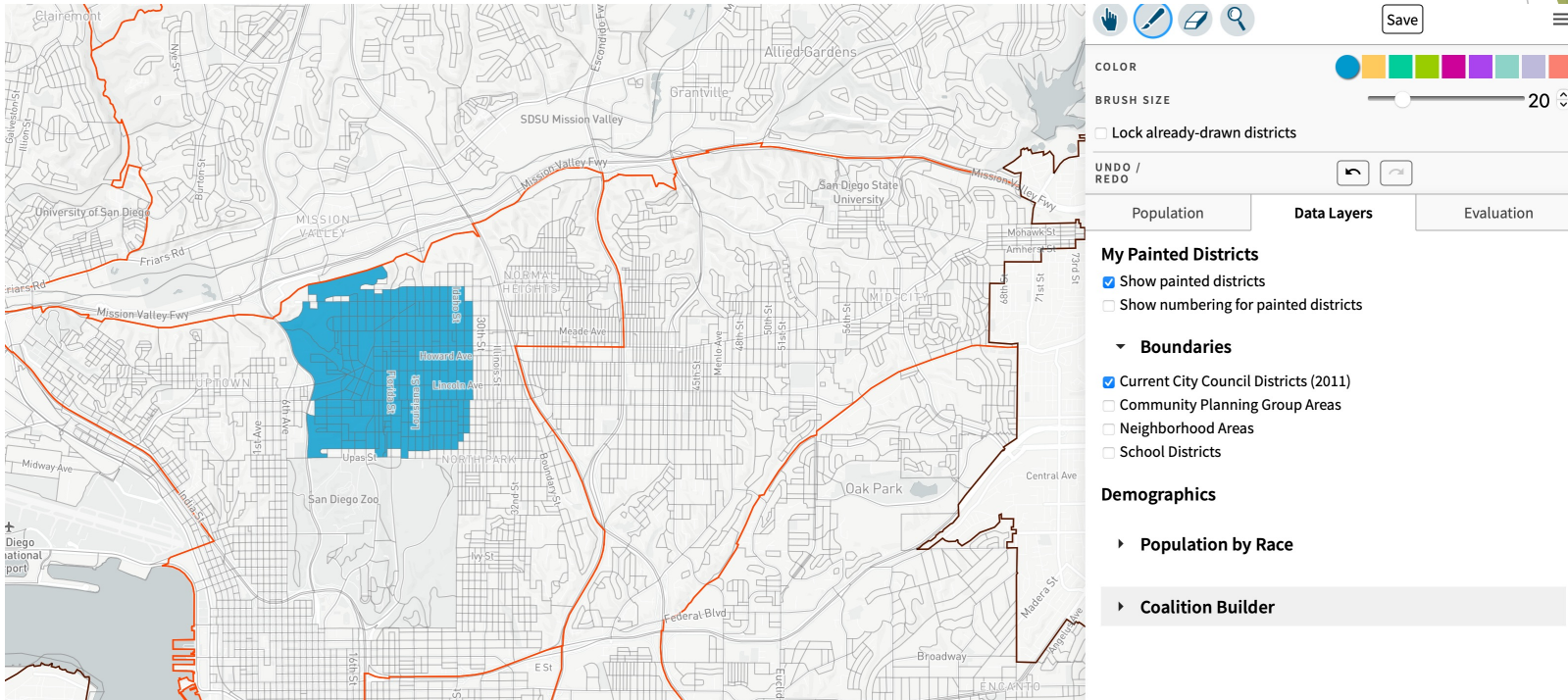
# New Districtr Mapping Tool - Mapping by 'Painting'



Please go to <https://bit.ly/sdmapping> to access the Districtr Mapping Tool



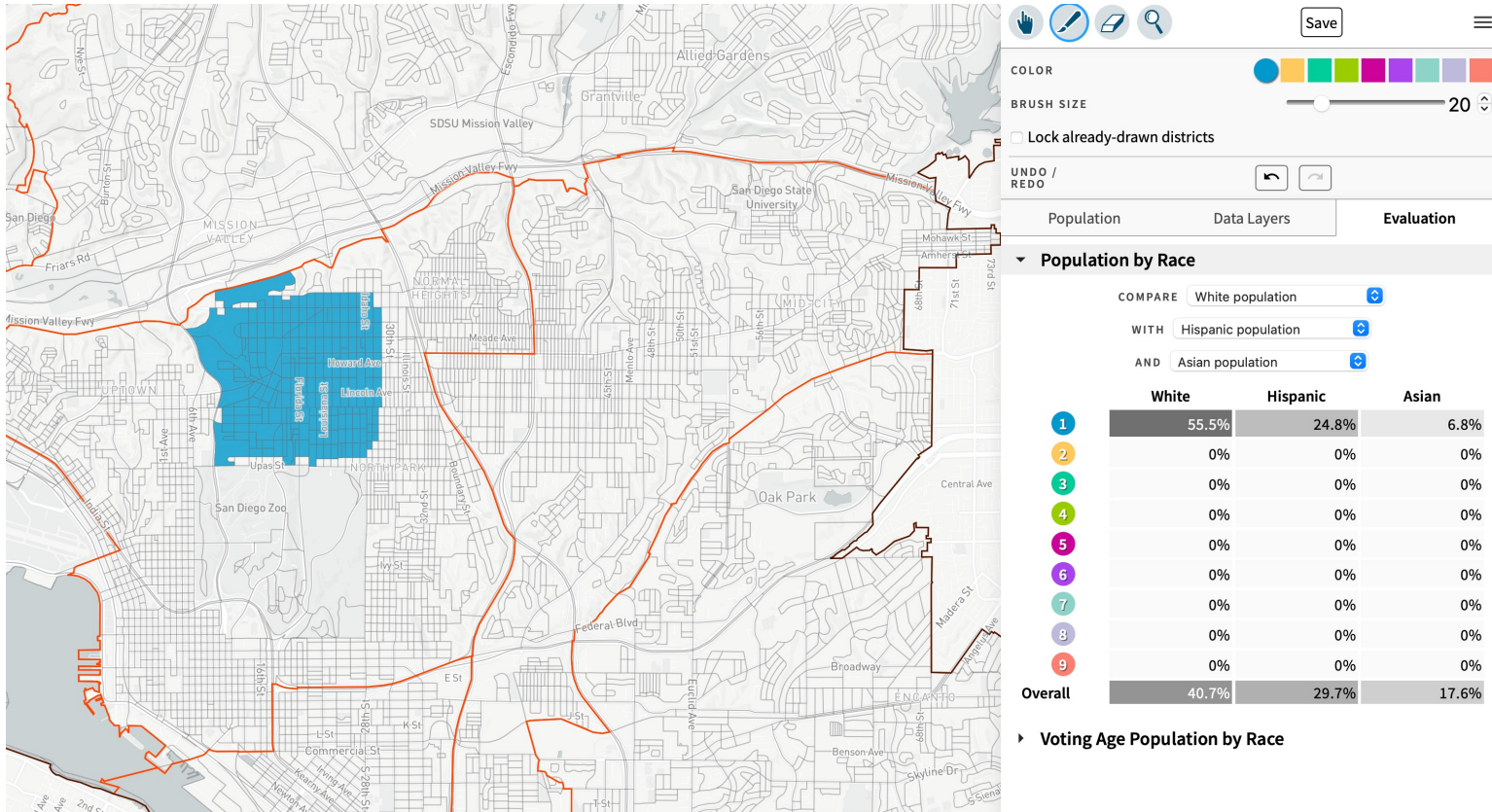
# New Districtr Mapping Tool - Data Layers



Please go to <https://bit.ly/sdmapping> to access the Districtr Mapping Tool



# New Districtr Mapping Tool - Population Information



Please go to <https://bit.ly/sdmapping> to access the Districtr Mapping Tool

# Save, Share, Submit Plans

## Plan has been saved



Use this URL to share your plan!

<https://districtr.org/plan/52089>

Copy to Clipboard

You can close this window and keep working, and update whenever you'd like. Even if you share the link, nobody but you can change your plan—other people's changes will save to a new link.

When you are ready, you can bring this map back to the submission form on the City of San Diego Redistricting Public Comment Portal.

Proceed to Submit Map

Please go to <https://bit.ly/sdmapping> to access the Districtr Mapping Tool

# Some Suggestions When Creating New City Council Districts

- ▶ Remember to consider the rules the Commission has to follow:
  - ▶ Keep your districts close to the ideal 1/9<sup>th</sup> population size (no more than a total deviation of 10% between the largest and smallest district - roughly 147,000 - 161,000 at most, and ideally, a smaller range)\*
  - ▶ Compactness and contiguity
  - ▶ Keep communities of interest as intact as possible
  - ▶ Consider using major natural or man-made features to define districts as appropriate
- ▶ Consider the impact your preferred district plan has on districts surrounding it - do neighboring districts conform to the rules above?

- \*These figures may change slightly after the release of the California Statewide Database

Please go to <https://bit.ly/sdmapping> to access the Districtr Mapping Tool

# Public Feedback Needed Throughout the Process

After all 9 community hearings have taken place, the Redistricting Commission will draw preliminary maps of the 9 Council districts. Then, the Commission will host 5 additional community hearings in November and December to receive feedback on the preliminary maps.

November 2021						
Sun	Mon	Tue	Wed	Thu	Fri	Sat
	1	2	3	4	5	6
7	8	9	10	11	12	13
14	15	16	17	18	19	20
21	22	23	24	25	26	27
28	29	30				

December 2021						
Sun	Mon	Tue	Wed	Thu	Fri	Sat
				1	2	3
4	5	6	7	8	9	10
11	12	13	14	15	16	17
18	19	20	21	22	23	24
25	26	27	28	29	30	31



# Stay Connected to the Commission

Email: [Redistricting2020@san-diego.gov](mailto:Redistricting2020@san-diego.gov)

Website: [www.san-diego.gov/redistricting-commission](http://www.san-diego.gov/redistricting-commission)

Facebook: [@CityofSDRedistrictingCommission](https://www.facebook.com/CityofSDRedistrictingCommission)

Twitter: [Redistrictsd](https://twitter.com/Redistrictsd)

Nextdoor: [nextdoor.com/agency-detail/ca/san-diego/city-of-san-diego/](https://nextdoor.com/agency-detail/ca/san-diego/city-of-san-diego/)

*\*There are also independent Redistricting Commissions for the county and state that you can get involved with.*