



October 11, 2021

City of San Diego Redistricting Commissioners
202 C Street
San Diego, CA 92101

Dear City of San Diego Redistricting Commissioners:

The Asian Pacific American Coalition (APAC) proposes three maps for your consideration. Below is a brief summary of each of the three maps. Please note that the maps are not numbered by preference.

Proposed Map #1

This map allows for **40.6% API** and includes the neighborhoods of Black Mountain Ranch, Rancho Penasquitos, Torrey Highlands, Mira Mesa, Sorrento Valley, Miramar, and partial Kearny Mesa and provides the total populations of 155,228. This map unites Rancho Penasquitos as a whole, into District 6.

Proposed Map #2

This map allows for **38.7% API** and includes the neighborhoods of Del Mar Heights, Carmel Valley, Sorrento Valley, Mira Mesa, Miramar, and partial Kearny Mesa, and provides the total populations of 154,746. This map unites Mira Mesa and Sorrento Valley.

Proposed Map #3

This map allows for **40% API** and includes the neighborhoods of Carmel Valley, Torrey Highlands, Mira Mesa, Sorrento Valley, Miramar, Kearny Mesa, and provides the total populations of 154,132. This map also unites Mira Mesa and Sorrento Valley, and allows for no partial communities.

APAC is in favor of a majority minority API district and urges the Redistricting Commission to consider maps that provide no less than 40% API in the district.

We appreciate all the work the Redistricting Commission is doing to build equitable neighborhoods in our great city. Please let us know if you have any questions, we may be reached at info@apacsd.org.



The **Asian Pacific American Coalition (APAC)** is a community-based, non-partisan, non-profit 501(c)(3) corporation whose mission is to cultivate civic engagement to forward the voices of San Diego's Asian Pacific American community. The goal of APAC is to ENGAGE, EDUCATE and EMPOWER San Diego's Asian Pacific American community.

Respectfully,

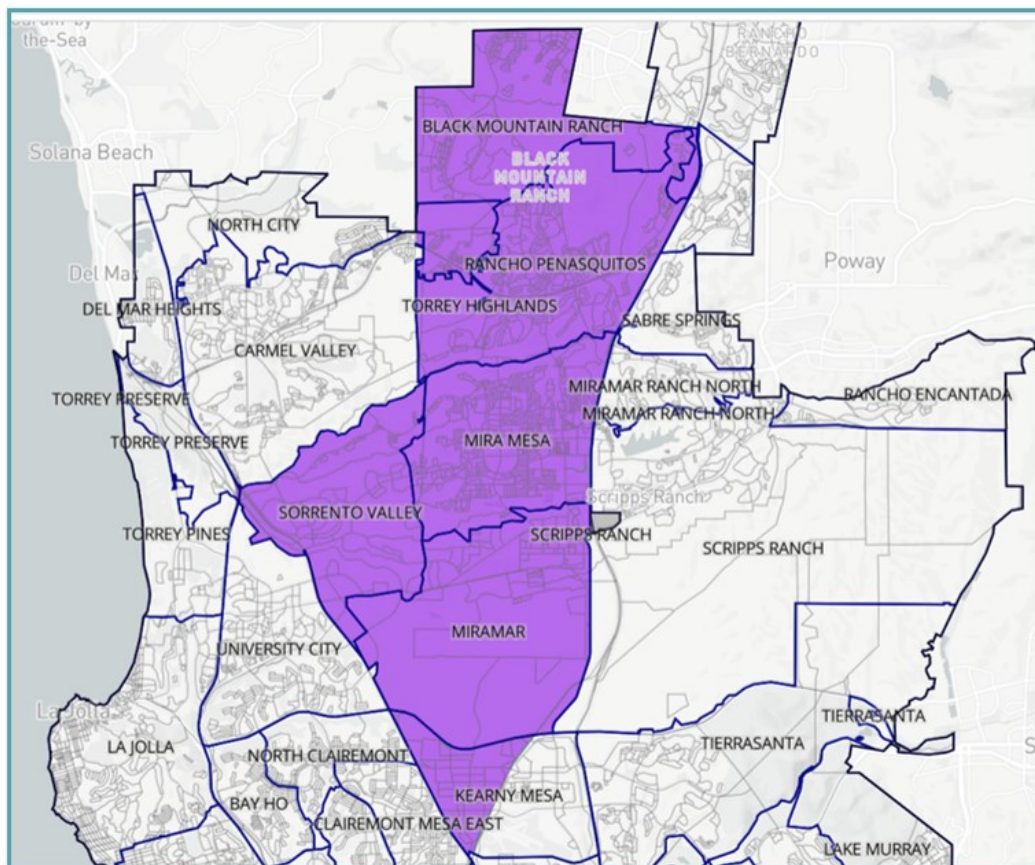
Steve Hsieh

Steve Hsieh
Chair, APAC

Cynthia Suero-Gabler
Vice Chair & Redistricting Sub-Committee Chair

Enclosures:
Proposed Maps

PROPOSED MAP 1 ANALYSIS

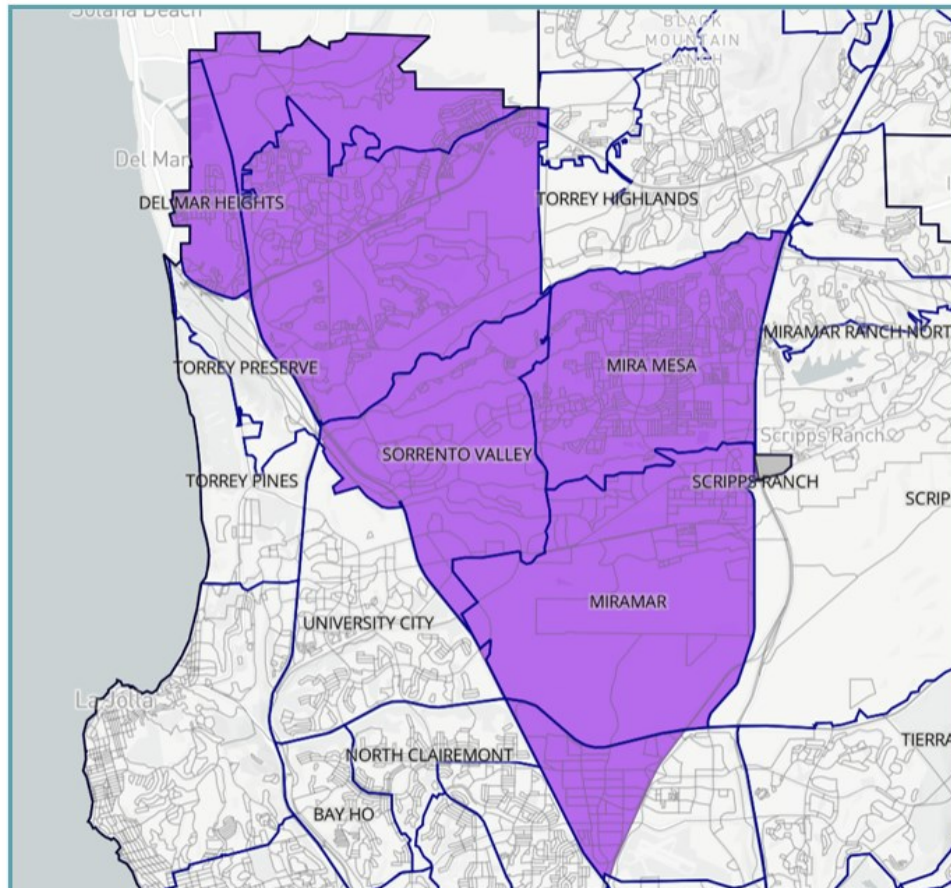


	White	Hispanic	Asian
1	0%	0%	0%
2	0%	0%	0%
3	44.1%	20.6%	5.9%
4	0%	0%	0%
5	0%	0%	0%
6	35.2%	13.6%	40.6%
7	0%	0%	0%
8	0%	0%	0%
9	0%	0%	0%
Overall	40.7%	29.7%	17.5%

SUMMARY

- Neighborhoods include: Black Mountain Ranch, Rancho Penasquitos, Torrey Highlands, Mira Mesa, Sorrento Valley, Miramar, Partial Kearny Mesa
- Total Population - 155,228
- API% - 40.6%

PROPOSED MAP 2 ANALYSIS

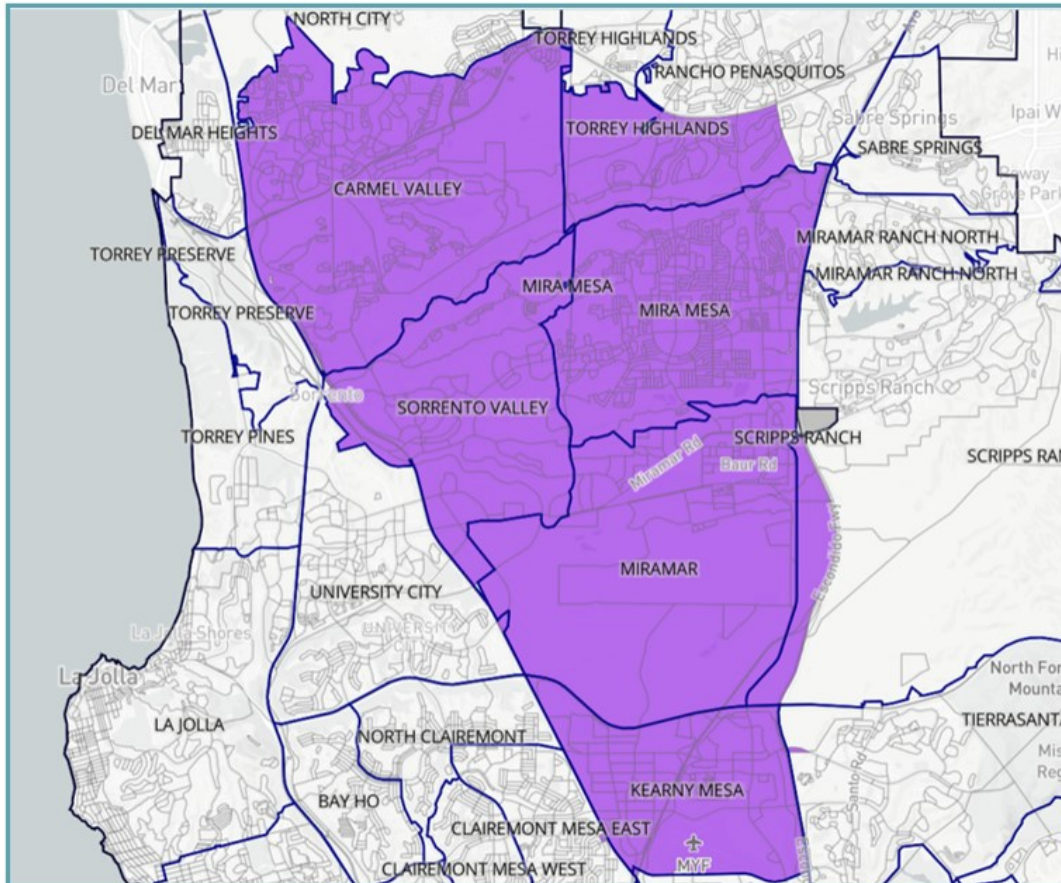


	White	Hispanic	Asian
1	0%	0%	0%
2	0%	0%	0%
3	47.4%	17.5%	10.5%
4	0%	0%	0%
5	0%	0%	0%
6	38.9%	12.8%	38.7%
7	0%	0%	0%
8	0%	0%	0%
9	0%	0%	0%
Overall	40.7%	29.7%	17.5%

SUMMARY

- Neighborhoods include:
Del Mar Heights, Carmel Valley, Sorrento Valley, Mira Mesa, Miramar, Partial Kearny Mesa
- Total population - 154,746
- API % - 38.7%

PROPOSED MAP 3 ANALYSIS



	White	Hispanic	Asian
1	0%	0%	0%
2	0%	0%	0%
3	0%	0%	0%
4	0%	0%	0%
5	0%	0%	0%
6	37%	13.1%	40%
7	0%	0%	0%
8	0%	0%	0%
9	0%	0%	0%
Overall	40.7%	29.7%	17.5%

SUMMARY

- Neighborhoods Include: Carmel Valley, Torrey Highlands, Mira Mesa, Sorrento Valley, Miramar, Kearny Mesa
- Total Population - 154,132
- API – 40%

Signature: *Steve Hsieh*

Email: shsieh92@hotmail.com

2021 REDISTRICTING COMMISSION OF THE CITY OF SAN DIEGO MAP SUBMITTAL

www.apac.org





The **Asian Pacific American Coalition (APAC)** is a community-based, non-partisan, non-profit 501(c)(3) corporation whose mission is to cultivate civic engagement to forward the voices of San Diego's Asian Pacific American community. The goal of APAC is to **ENGAGE**, **EDUCATE** and **EMPOWER** San Diego's Asian Pacific American community.



PRESENTATION OVERVIEW

- Redistricting Overview
- Requirements and Framework
- Proposed Maps and Analysis

WHAT IS REDISTRICTING?

- Redistricting in the United States is the process of drawing electoral district boundaries.
- Redistricting happens every 10 years as a result of the new census numbers; addresses changes in the population.

United States®
Census
2020

U.S. Census Bureau

DC 20233-0001

Director

March 12, 2020

Dear Resident:

THE IMPORTANCE OF REDISTRICTING

- Representation on local level positions
- Representation matters
- Takes place citywide, countywide, statewide and nationally





6 Things to Consider When Redrawing the Lines

1 Equal Population

Each Council District should contain roughly 1/9 of the city's population.

2 Contiguity

Council Districts should be composed of contiguous territory.

3 Geographically Compact

Council Districts should be geographically compact so nearby areas of population aren't bypassed for more distant populations.

4 Communities of Interest

Council Districts should try to preserve communities who have similar legislative concerns who could therefore benefit from cohesive representation.

5 Reasonable Access

Council Districts should provide reasonable access between population centers.

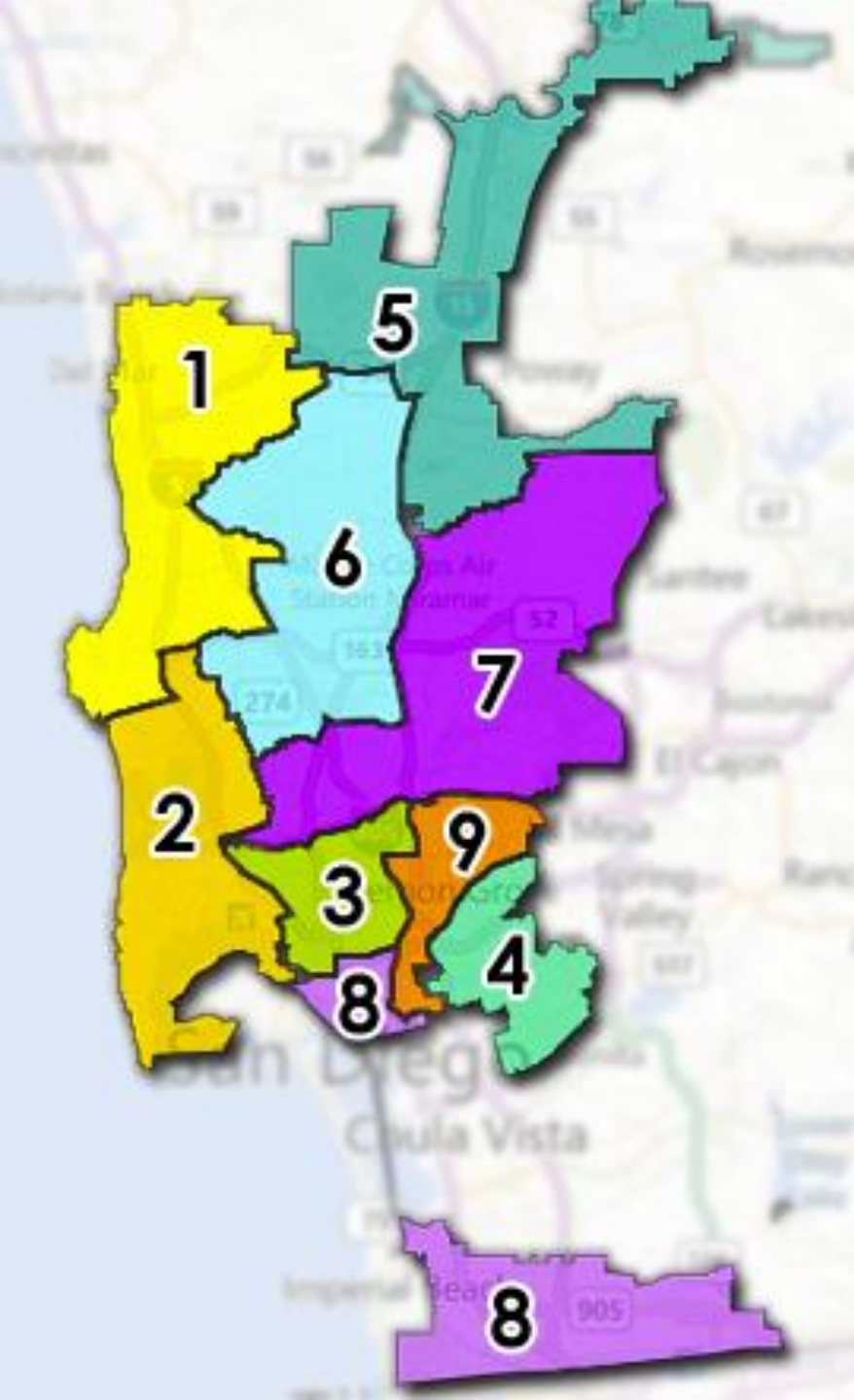
6 Natural Boundaries

Council Districts should be bounded by natural boundaries, street lines and/or City boundary lines.

For more information about the City of San Diego Redistricting Commission, please go to www.sandiego.gov/redistricting-commission. If you have questions or need translation services, please email redistricting2020@sandiego.gov (3) three business days in advance.

REDISTRICTING FRAMEWORK

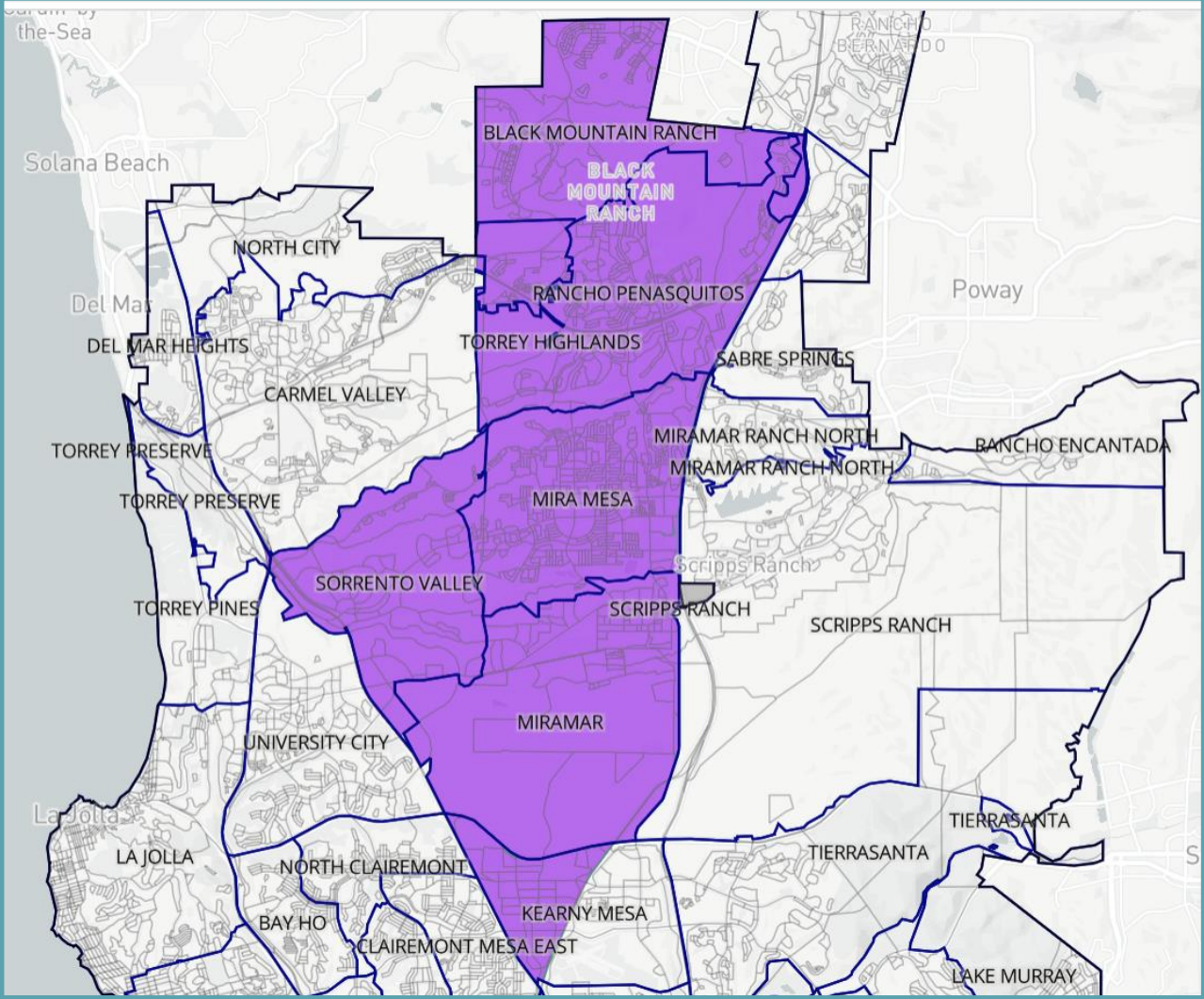




SUMMARIZING SAN DIEGO

- Current total population of 1,389,891
- Total of 9 districts
- Residents in each district elects a person to represent them on the City Council

PROPOSED MAP 1 ANALYSIS

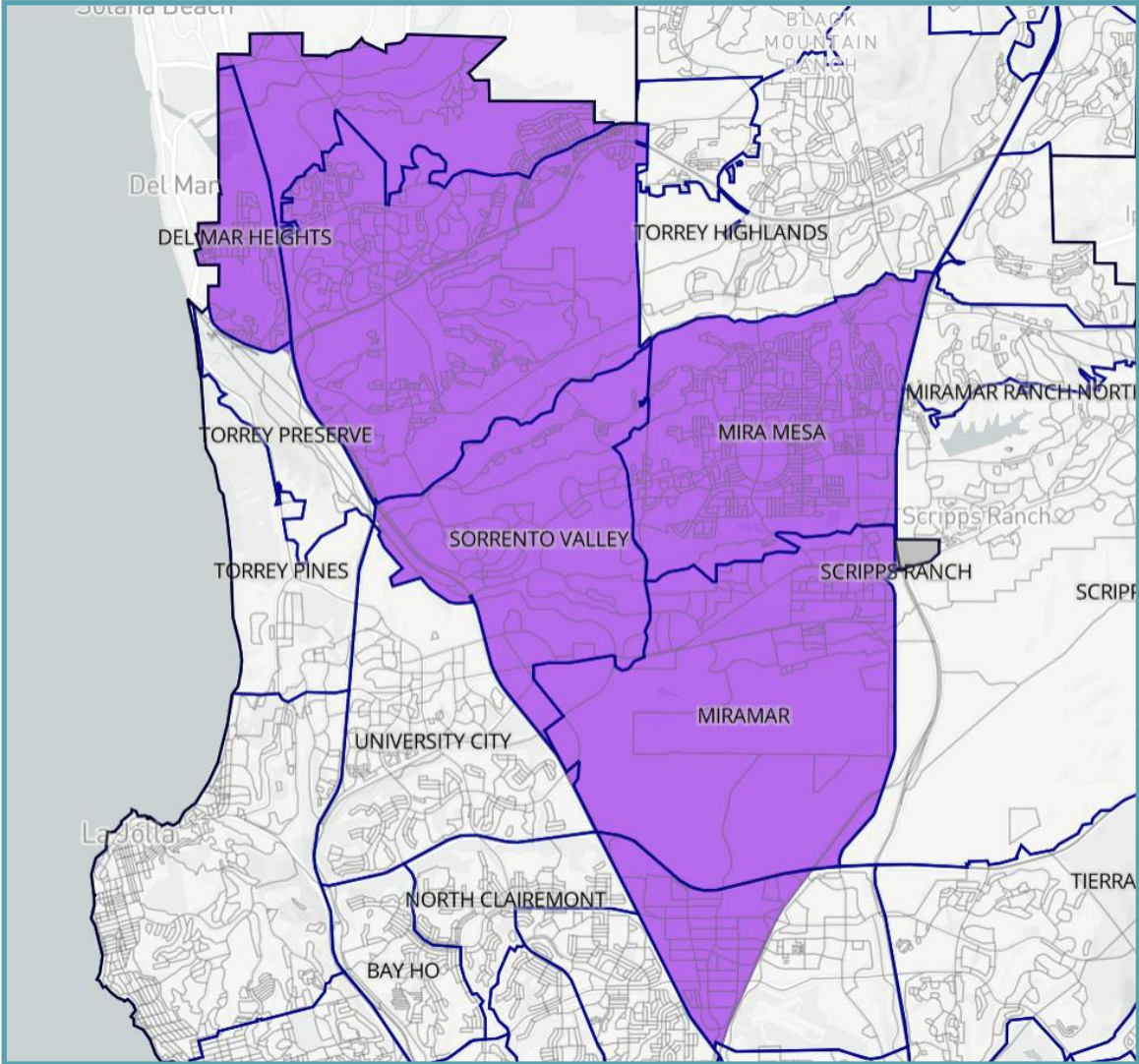


	White	Hispanic	Asian
1	0%	0%	0%
2	0%	0%	0%
3	44.1%	20.6%	5.9%
4	0%	0%	0%
5	0%	0%	0%
6	35.2%	13.6%	40.6%
7	0%	0%	0%
8	0%	0%	0%
9	0%	0%	0%
Overall	40.7%	29.7%	17.5%

SUMMARY

- Neighborhoods include:
Black Mountain Ranch,
Rancho Penasquitos,
Torrey Highlands, Mira Mesa,
Sorrento Valley, Miramar,
Partial Kearny Mesa
- Total Population - 155,228
- API% - 40.6%

PROPOSED MAP 2 ANALYSIS

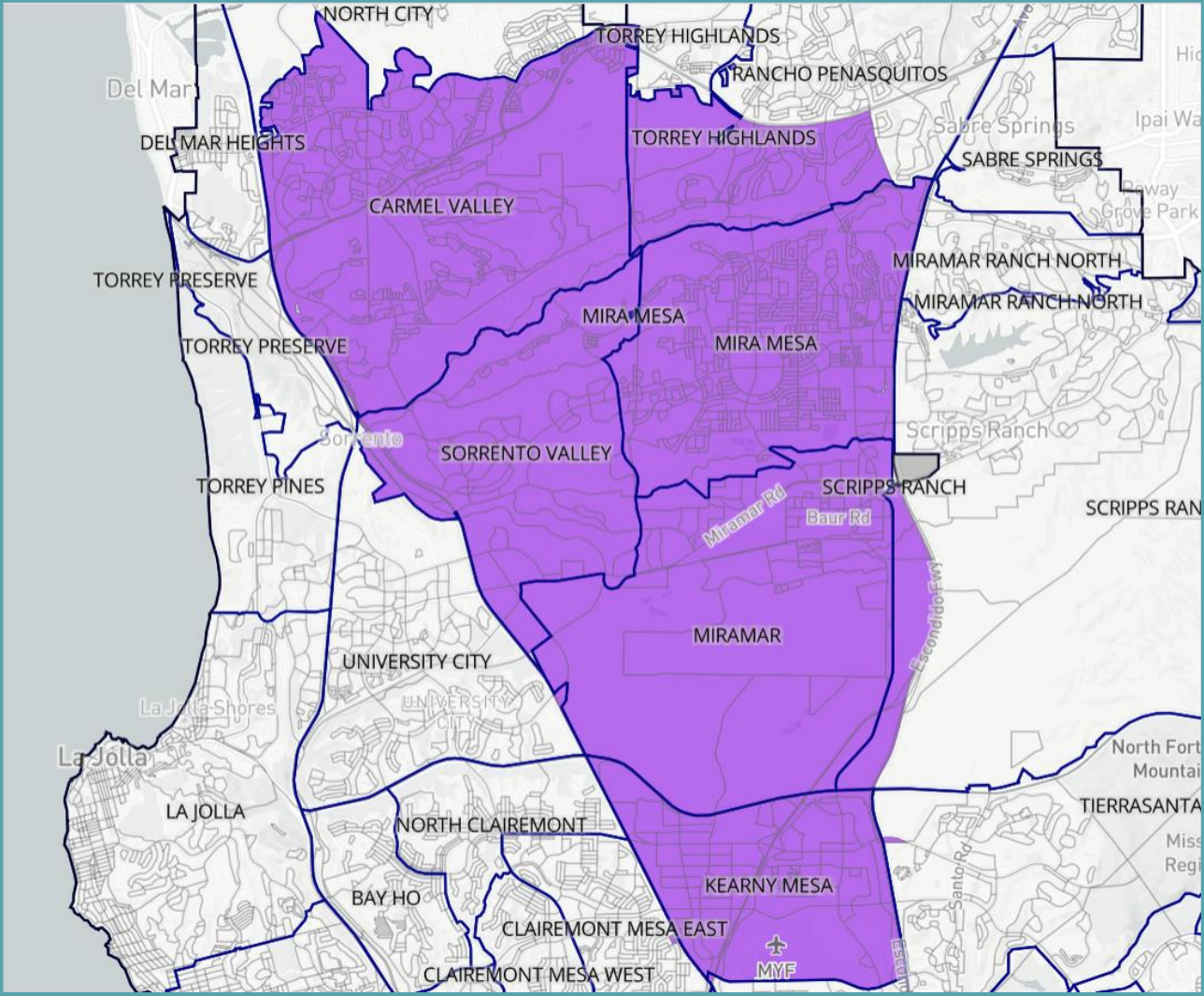


	White	Hispanic	Asian
1	0%	0%	0%
2	0%	0%	0%
3	47.4%	17.5%	10.5%
4	0%	0%	0%
5	0%	0%	0%
6	38.9%	12.8%	38.7%
7	0%	0%	0%
8	0%	0%	0%
9	0%	0%	0%
Overall	40.7%	29.7%	17.5%

SUMMARY

- Neighborhoods include: Del Mar Heights, Carmel Valley, Sorrento Valley, Mira Mesa, Miramar, Partial Kearny Mesa
- Total population - 154,746
- API % - 38.7%

PROPOSED MAP 3 ANALYSIS



	White	Hispanic	Asian
1	0%	0%	0%
2	0%	0%	0%
3	0%	0%	0%
4	0%	0%	0%
5	0%	0%	0%
6	37%	13.1%	40%
7	0%	0%	0%
8	0%	0%	0%
9	0%	0%	0%
Overall	40.7%	29.7%	17.5%

SUMMARY

- Neighborhoods Include: Carmel Valley, Torrey Highlands, Mira Mesa, Sorrento Valley, Miramar, Kearny Mesa
- Total Population - 154,132
- API – 40%



Thank you