

DISTRICT 1 UNITED STATEMENT

Response to Neighborhood Voices (P 5019), District 6 Student/AAPI and APAC maps

District 1 United is a coalition of communities of interest, concerned citizens, community planning groups, and environmental organizations committed to the preservation of District 1, the Coast and Canyons district, as currently constituted.

District 1 spans the coast and canyons of the City from Carmel Valley to University City and La Jolla. It includes one of the most bio-diverse areas in North America. University of California San Diego (UCSD) forms a hub for District 1 around which one of the City's principle economic engines, the biotech and high tech industries, revolves. The communities in District 1 understand the common environmental, economic, and institutional issues we face, the complexity of planning and development processes, and the value of having cohesive representation at the City Council.

At the September 8, 2021 Special Meeting of the City of San Diego's Redistricting Commission a proposed redistricting map was presented by Neighborhood Voices San Diego to expand Council District 6. This map has been submitted to the Redistricting Commission at least 30 times with slight variations. The specifics of the variations are summarized in Table 1. Some variations were so slight that the differences were not documented. The proposed map splits D1 into three pieces, one of which is D6. There is no indication of how this D6 will work with the other districts in the City of San Diego. The proposed district lacks coherent natural or man-made boundaries and is not compact. Travel between the various population centers within the district is difficult if not impossible. Neighborhoods and individual homes have been isolated from roads.

The preliminary map submitted via email by Stephen Hsieh for APAC is included in this commentary because it also presents a proposal for only D6.

If the proposed map (P 5019) is implemented, the communities of interest (COI) in D1 will be negatively affected in numerous ways: As detailed below the proposed map splits COI including: all community planning areas; some neighborhoods, school districts, school attendance areas, maintenance assessment districts, environmental resources and stewardship groups, as well as COI focused on UCSD – UTC/Golden Triangle – La Jolla issues; infrastructure projects; traffic impacts and major intersections; UCSD institutional impacts; shared watersheds, and eruvim. The other 29 maps submitted by D6 Student/AAPI are shown with any significant differences from the effects of the original map (P 5019).

COI – Community Planning Areas will be divided in different Council Districts

The proposed map would split into different Council Districts the D1 Community Planning Areas of Carmel Valley, Del Mar Mesa, La Jolla, Torrey Hills, Torrey Pines, and University City, complicating effective planning across a large swath of the North City and diminishing the representation of residents of these planning areas within their separate council districts.

- Carmel Valley – Carmel Valley Planning Area would be split between two districts.
- Del Mar Mesa – Two Homeowners Association boundaries will be split between two districts.
- La Jolla – The La Jolla Shores Planned District will be split into two Council Districts. La Jolla Community Plan area will be split with La Jolla Farms, Scripps Estates Associates, Black Horse Farms and part of La Jolla Shores split from the La Jolla Community Plan area. The entrance to Montoro will not be in D6 and Montoro will be split into D6 and another district.
- Torrey Hills – One residential area in D1 will be isolated and have access only through D6.
- Torrey Pines – The Torrey Pines Planning area will be split with the Sorrento Valley and Del Mar Terrace neighborhoods in one Council District and the Del Mar Heights neighborhood in another Council District.

- University Community – which includes UCSD, UTC, and Torrey Pines Mesa – will be divided. North University City will be split from South University City.

COI – Neighborhoods will be in different Council Districts

The D1 Neighborhoods of Carmel Valley, La Jolla, and University City will be split along artificial boundaries into different Council Districts.

COI – School Districts will be in different Council Districts

The D1 School Districts of Del Mar Union, San Dieguito Union High School, and Solana Beach Elementary will be split into different Council Districts. Within the San Diego Unified School District, the La Jolla and University City High School Clusters will be split and individual school attendance areas will be in different Council Districts for both communities. As schools form a very important basis for other COI's, this division will impact youth, community and family activities.

COI – Maintenance Assessment Districts will be in different Council Districts

The MADs managed by the Park and Recreation Department:

- La Jolla Village Drive Maintenance Assessment District
- Torrey Hills Maintenance Assessment District

COI – Environmental Interests and Concerns will be in different Council Districts

District One's protected habitat areas are the focus for a significant COI. Multiple sensitive areas will be split into different Council Districts and many environmentally sensitive areas will be separated from the neighboring communities that have provided long-term stewardship for them and for the region as a whole.

- The wildlife corridor in north D1 connecting Torrey Pines State Park on the west to Del Mar Mesa Preserve on the east through Los Peñasquitos Lagoon, Carmel Mountain, Shaw Valley, and Los Peñasquitos Canyon will be split between at least two Council Districts.
- Critical Open Space and Habitat Preserves themselves will be split into different Council Districts, including Torrey Pines State Park, Del Mar Mesa Preserve, and Carmel Mountain Preserve.
- The six-thousand-acre, San Diego-La Jolla Underwater Park, five Marine Protected Areas (South La Jolla State Marine Conservation Area, South La Jolla State Marine Reserve, Matlahuayl State Marine Reserve, Scripps Coastal Reserve, and San Diego-Scripps Coastal State Marine Conservation Area), an Area of Special Biological Significance (ASBS) along La Jolla Shores Beach which is shared with UCSD will all be in different Council Districts.
- The La Jolla Shores Beach and Kellogg Park will be split into different Council Districts.
- Rose Canyon Open Space Park will be split down the middle into two different Council Districts.
- Environmental resources are separated from the responsible planning group, for example: Penasquitos Lagoon is split from the Torrey Pines Planning Group; East Rose Canyon, Soledad Canyon, and Rose Canyon Open Space Park are split from University Community Planning Group and Carmel Mountain Preserve from Carmel Valley Planning Group. The proposed map forces community interest groups that have successfully acted to protect, preserve and enhance these areas to work with two or more Council Districts instead of one. This affects groups such as: Friends of Rose Canyon; Friends of La Jolla Shores; Friends of Del Mar Mesa Preserve; Friends of Los Peñasquitos Preserve; Torrey Pines Association, and others).

These sensitive environmental resources should remain in one district where there is an existing knowledge base and a tradition of conservation and managed growth. These areas provide outdoor recreational opportunities for our entire region, as well as ensuring that San Diego meets goals for clean water, climate action and habitat protection mandated by the State of California.

COI – UCSD – UTC/Golden Triangle/La Jolla issues will be in different Council Districts

- UCSD including Scripps Institution of Oceanography (SIO) is deeply integrated with the communities of University City and La Jolla and all should remain in the same district. The proposed map would cause the D1 COI's (described in District 1 United, "Coast & Canyons," Report to the 2021 San Diego Redistricting Commission) associated with UCSD to be split, ending the focused local collaboration on a range of issues that has historically led to better planning for the campus and D1 as a whole. UCSD representatives frequently attend both the University Community Planning Group and the La Jolla Community Planning Association meetings to present projects and inform the community about upcoming activities, an example of present coordination with UCSD.
- The UTC/Golden Triangle Area and Torrey Pines Mesa, including the bio-tech hub and regional hospitals, are fully integrated with the surrounding residential communities of University City and La Jolla, and all should remain in the same district. The proposed map would cause the D1 COI's associated with UCSD/UTC/Golden Triangle to be split, ending the focused local collaboration on a range of issues that has historically led to better planning and prosperity for the UTC/Golden Triangle area, for D1 and San Diego as a whole.

COI – Infrastructure Projects will be in different Council Districts

Transportation Infrastructure: Important north-to-south transportation corridors (I-5 and I-805) and east-to-west commuter routes such as SR-52 and SR-56 cross or abut D1. The following infrastructure projects will be split into different Council Districts:

- The widening of I-5 from the 52 north
- The I-5 to 56 connection; 56 widening
- The I-5/I-805 merge widening
- The proposed I-805/SR52 Managed Lanes intersection ramps and flyovers
- Possible tunneling for the double track Amtrak train transportation which would pass under North and South UC to the Sorrento Valley area
- The Blue Line Trolley Extension
- Improvements for active transportation, such as the Coastal Rail Trail, which runs from Sorrento Valley across UCSD to the Rose Canyon Bicycle Path

Public Utilities Infrastructure: North City Water Reclamation Plant and Pure Water Facility will be separated from neighboring residential communities in South University City, which have significant interest in their effective operation and their potential for negative impacts.

COI – Traffic impacts will be in different Council Districts

- Traffic to and from Torrey Pines Mesa, UCSD and North UC travels on the primary arterials and neighborhood streets of North and South University City and La Jolla to access the freeways. Some examples include West 52/La Jolla Parkway/La Jolla Scenic N to North Torrey Pines; West 52 to Genesee to La Jolla Village; North Torrey Pines/south on La Jolla Shores Drive/east on La Jolla Parkway/East 52; North Torrey Pines/La Jolla Village/Gilman/South I5. These traffic patterns would be in separate Council Districts and are a part of normal weekday's rush hour traffic, as well as weekend coastal access congestion. A map variation shows the intersection of La Jolla Shores Drive, Torrey Pines Road and the La Jolla Parkway in two districts.
- I-5 to the south end of University City with receive split representation from two Council Districts. El Camino Real south of Del Mar Heights (DMH) Road will have to endure split representation between Council Districts. Popular, fast-growing high traffic regional shopping and restaurant centers at DMH Road and El Camino Real cannot be properly served by split Council Districts. Residents move to Carmel Valley for the well-known school system, quality of life, well-planned and zoned shopping and service establishments, and splitting their council support will lead to unmitigated traffic control and impacts, as well as creating a growing public safety maze of

undersized roadways, inadequate numbers of traffic signals and limited or no new pedestrian bridges and modern crosswalks.

COI – UCSD Institutional Impacts in different Council Districts

The UCSD campus and its affiliates directly affect transportation, public safety and quality of life in the adjacent communities. The proposed map would place the residential neighborhood of La Jolla Shores Heights in a different district from UCSD, even though it is directly across the street from UCSD and impacted with parking, traffic congestion and noise issues from UCSD. This neighborhood and North and South University City have student rented houses that sometimes create problems for individual neighborhoods which in the past have been addressed through one Council District office. The University's growth has also created new fire safety and mobility challenges for adjoining communities, which have been effectively addressed through one Council District – e.g., the addition of a new campus fire station, regional bike infrastructure – the Coastal Rail Trail – through campus, and a new bike-pedestrian bridge to connect east and west campuses. With the proposed map UCSD generated public safety, mobility, and quality of life issues will be addressed by a different Council District from UCSD.

COI – Shared Watersheds in different Council Districts

The watershed of the Peñasquitos Lagoon will no longer be in one Council District.

The Marine Protected Areas (MPA) that are now in one Council District will be in different Council districts. Depending upon the southerly boundary of the proposed map, even the MPA's, the Area of Special Biological Significance and the San Diego-La Jolla Underwater Park will be in different Council Districts.

COI – Eruvim in different Council Districts

The proposed map splits the La Jolla Eruv into different Council Districts. The La Jolla Eruv is shown by Figure 1 and is essentially defined by La Jolla Village Drive on the north, Highway 5 on the east, La Jolla Parkway on the south, and Torrey Pines Road on the west (<https://www.adatyeshurun.org/eruv>). The proposed map excludes the Eruv area between Torrey Pines Road and Gilman Drive which is about half of the Eruv.

This excluded area includes two neighborhood Synagogues (Congregation Adat Yeshurun and Congregation Beth El).

The Chabad Center of University City's Eruv was split into 2 council districts by a few of the alternate maps proposed by D6 Students and AAPI.

Note: An eruv is defined as an urban area enclosed by a wire boundary which symbolically extends the private domain of Jewish households into public areas, permitting activities within it that are normally forbidden in public on the Sabbath.

APPENDIX

Table 1	Comparison of Neighborhood Voices Map (P 5019) and District 6 Student/AAPI maps
Figure 1	La Jolla Eruv
Attachment 1	Map Evaluation

TABLE 1

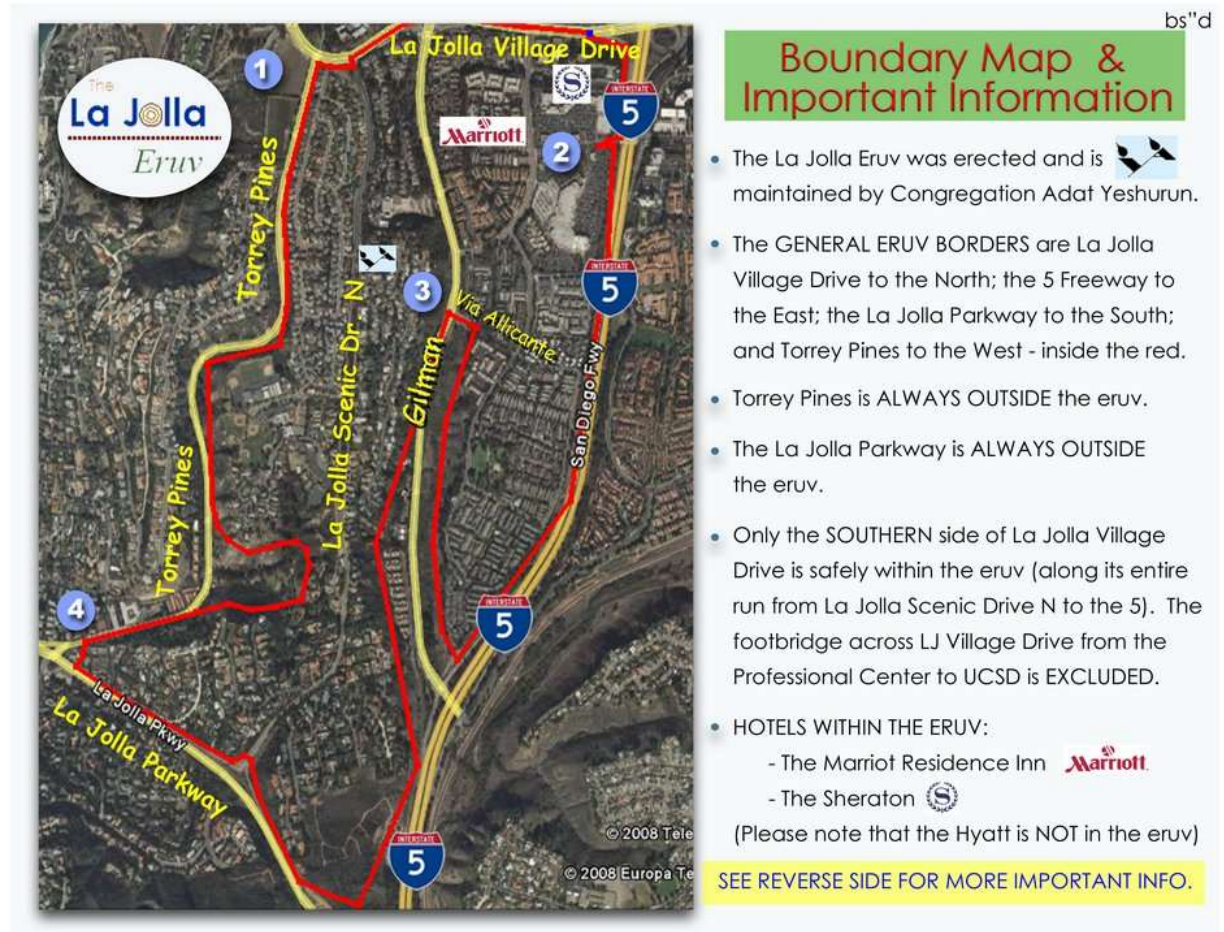
Comparison of Neighborhood Voices Map (P 5019) and District 6 Student/AAPL maps

Submitter	ID	Population	Asian %	Differences from Basic Map
Angeli	P 5019	160,503	40.9	Basic Map – Neighborhood Voices Map
Nicholas Vo	P 5046	152,549	41.7	Removed La Jolla Shores Planned District/SIO/Student Housing/ Parts of LJ Colony/Parts of North UC have holes
Charles	P 5047	160,794	40.8	Removes part of SIO
Jonathan Vo	P 5048	160,870	40.8	Removes part of UCSD Campus
Jessica Vu	P 5049	161,816	40.8	Montoro not removed and district goes to Calle del Oro in La Jolla Shores (LJS)
Nicholas Schaefer	P 5052	160,860	40.8	Miscellaneous blocks removed
Emily	P 5053	161,333	40.8	Includes isolated block in LJS
Peter Vu	P 5054	162,068	40.7	Includes LJS down to Calle del Oro and random areas/all of Torrey Hills (TH)
Ethan Awh	P 5055	161,071	40.8	Includes unconnected areas of LJS/missing part of UCSD campus
Christina Do	P 5056	160,777	40.8	
Nathan Chen	P 5057	159,737	40.9	Includes random holes/part of SIO removed
Peter Monh	P 5059	161,128	40.8	Missing random block in South UC/part of UCSD campus
Abby Jones	P 5060	161,205	40.8	
Tania Gallardo	P 5061	160,777	40.8	
Audrey Bogosian	P 5062	161,229	40.8	
Joan Yan	P 5096	153,582	40.1	Includes an isolated area of South UC/splits UC Eruv/random holes in map
Amanda Quach	P 5097	160,801	40.9	
Kevin Ing	P 5098	161,478	40.7	Isolated areas removed
Michael Lin	P 5099	160,503	40.9	Identical to Basic Map
Jolina Bui	P 5103	160,553	40.8	
Samuel Wu	P 5108	160,479	40.9	
Brandon Kao	P 5114	160,341	40.9	
Chris Molina	P 5123	159,178	40.5	Major intersection, the “Throat” in 2 districts
Katryn Cruz	P 5125	160,045	40.9	
Jenny Kezios	P 5126	160,479	40.9	
Christina Liang	P 5128	165,992	40.4	Includes all of Torrey Hills (TH) and most of Del Mar Mesa (DMM)
Aliya Srey	P 5130	152,921	30.6	Includes most of LJ and S UC excludes all of TH/Carmel Valley/DMM and most of Torrey Pines/Removed LJ later.
Vivian Le	P 5134	161,618	40.6	Montoro not split and one random block in North UC is removed
Ho-Hsin Wang	P 5146	151,537	41.4	UCSD is split leaving out about half of the campus west of I-5
Nina Zhang	P 5178	139,626	41.3	All of TH included/removes more of North UC including the block removed in P 5134
Stephen Hsieh	email	154,746	38.7	Splits TP/DMM/CV-PHR/small UC/Note: La Jolla/UC/UCSD/SIO not in D6

FIGURE 1

La Jolla Eruv Boundary Map

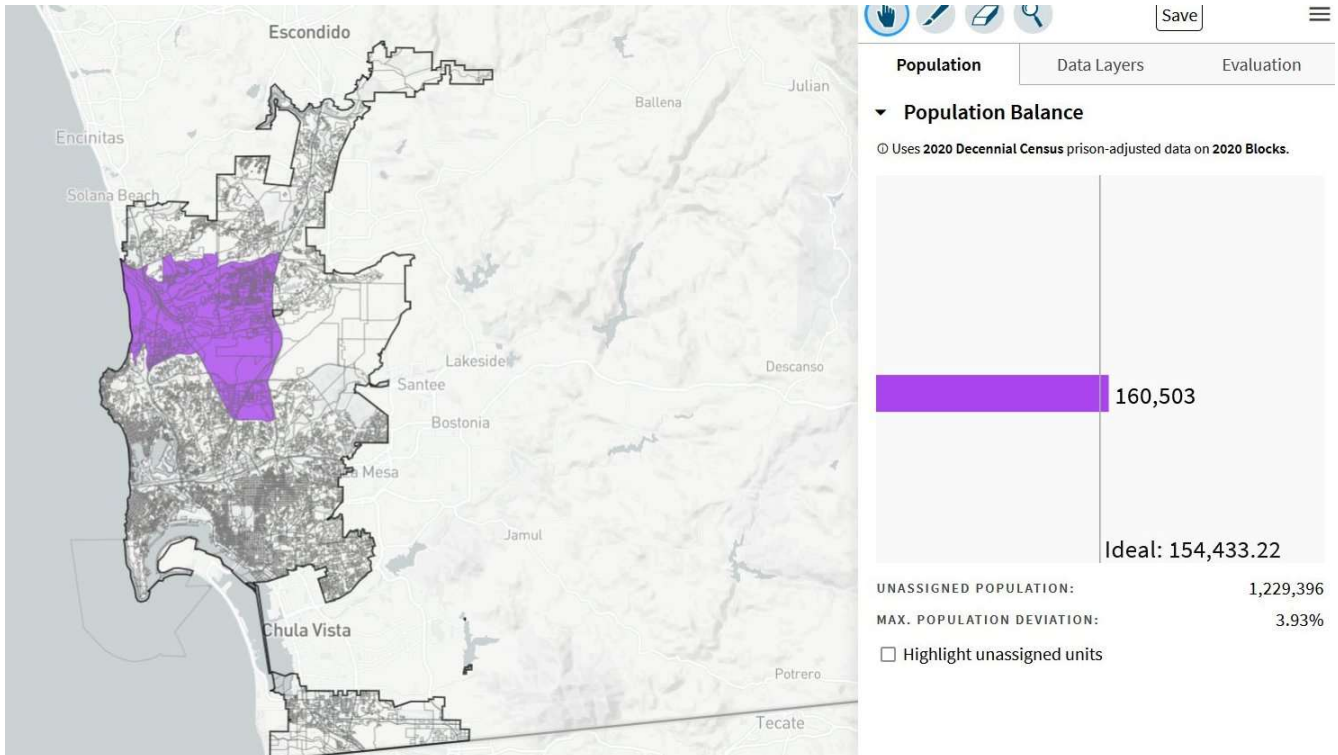
The Eruv Boundary Map shows the general area covered by the Eruv.



ATTACHMENT

Evaluation of District 6 Only Maps

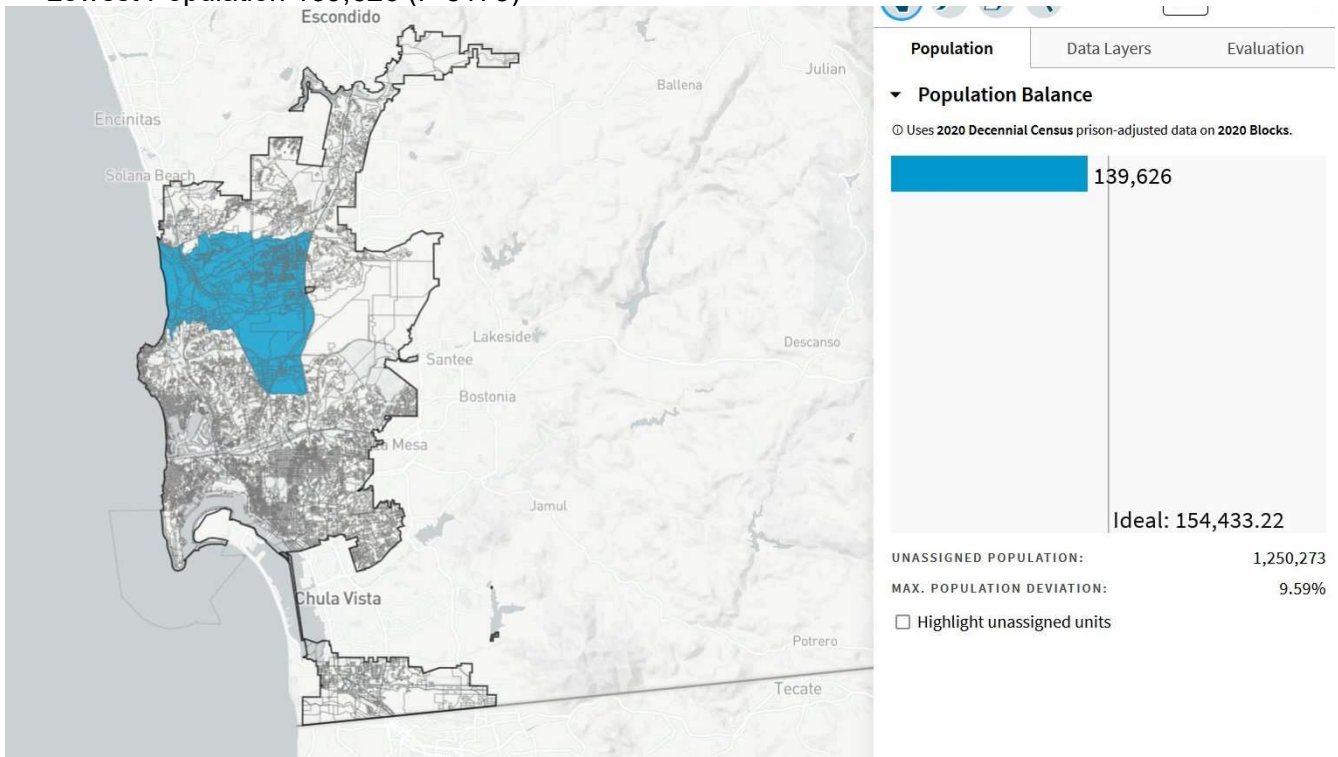
The following map (P5019) which was submitted by Angeli on behalf of Neighborhood Voices divides all of the Communities of Interest (COI) identified by District 1 United (the Coast and Canyons District). The consequences of this map have been detailed previously. This map leaves 1,229,396 as an unassigned population and does not show how it proposes to work with adjacent districts or the rest of the City.



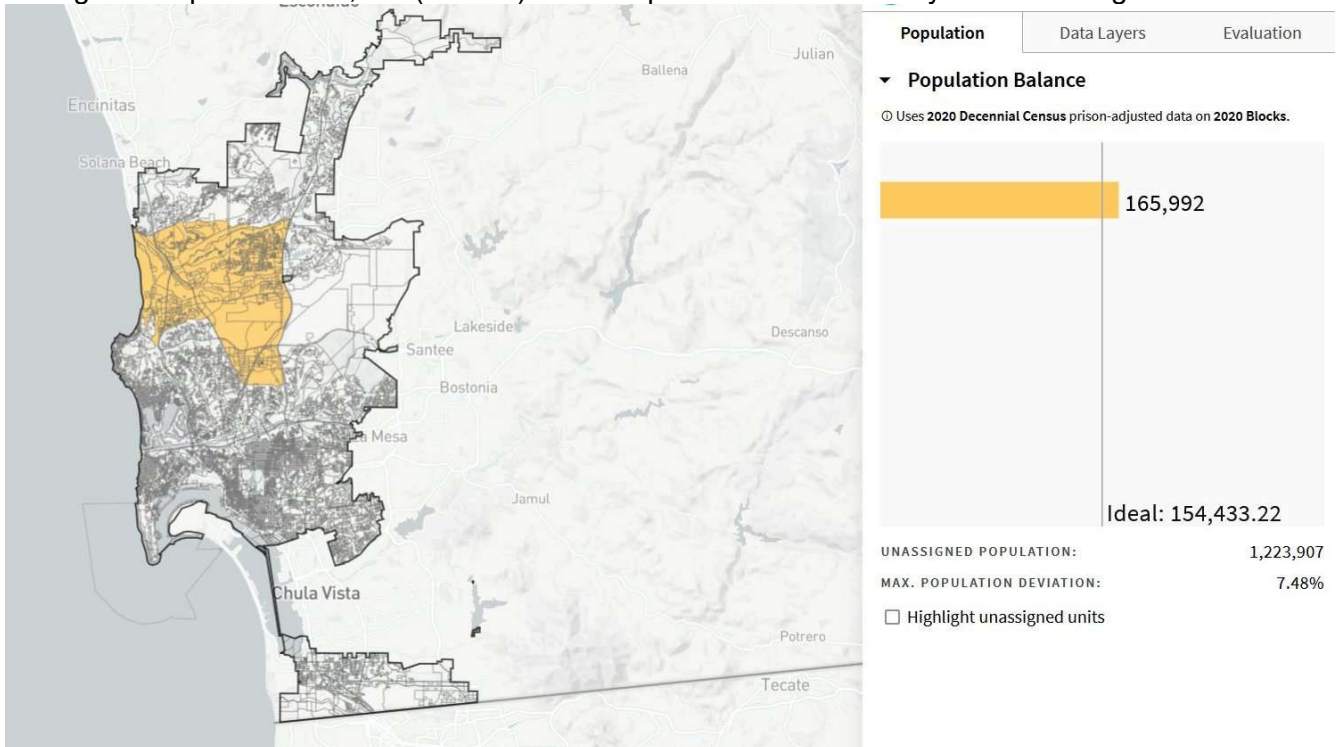
This map can be considered to be the master map for the other 29 similar maps submitted for D6. These map variations have populations that range from 139,626 to 165,929 and an Asian population percentage that varies from 30.6% to 41.7%. The unassigned population ranges from 1,223,907 to 1,250,273.

The random and ill considered changes in the maps continue the destruction of the COI identified by District 1 United (Ref. [District 1 United, "Coast & Canyons," Report to the 2021 San Diego Redistricting Commission](#)). Some examples of changes include splitting parts of UCSD from the proposed D6; splitting SIO from UCSD and D6; splitting both the La Jolla (Adat Yeshurun) and University City Eruvim; splitting parts of south University City; eliminating connectivity in the neighborhood by removing random blocks in the proposed district. One map places the major intersection of La Jolla Shores Drive, Torrey Pines Road and the La Jolla Parkway in 2 districts. Some maps had undocumented minor changes that are reflected by the population change. The following maps show the changes.

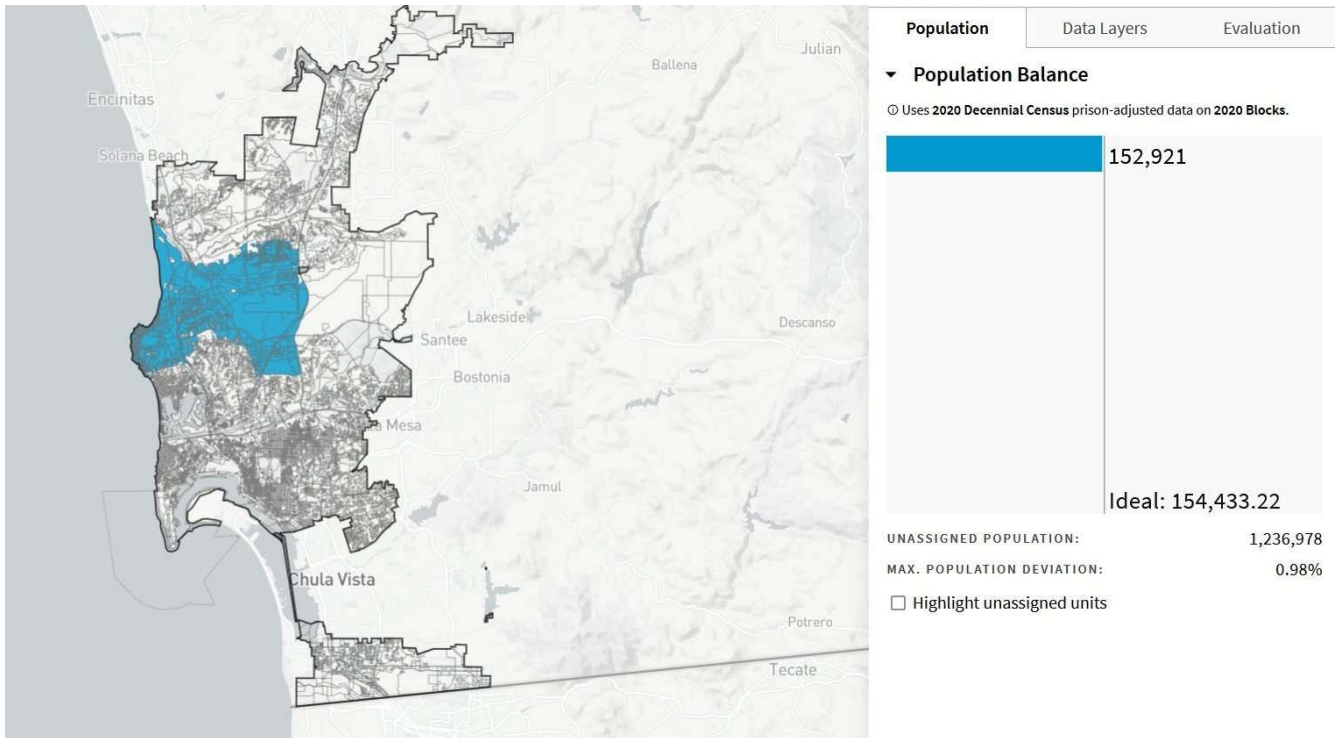
Lowest Population 139,626 (P 5178)



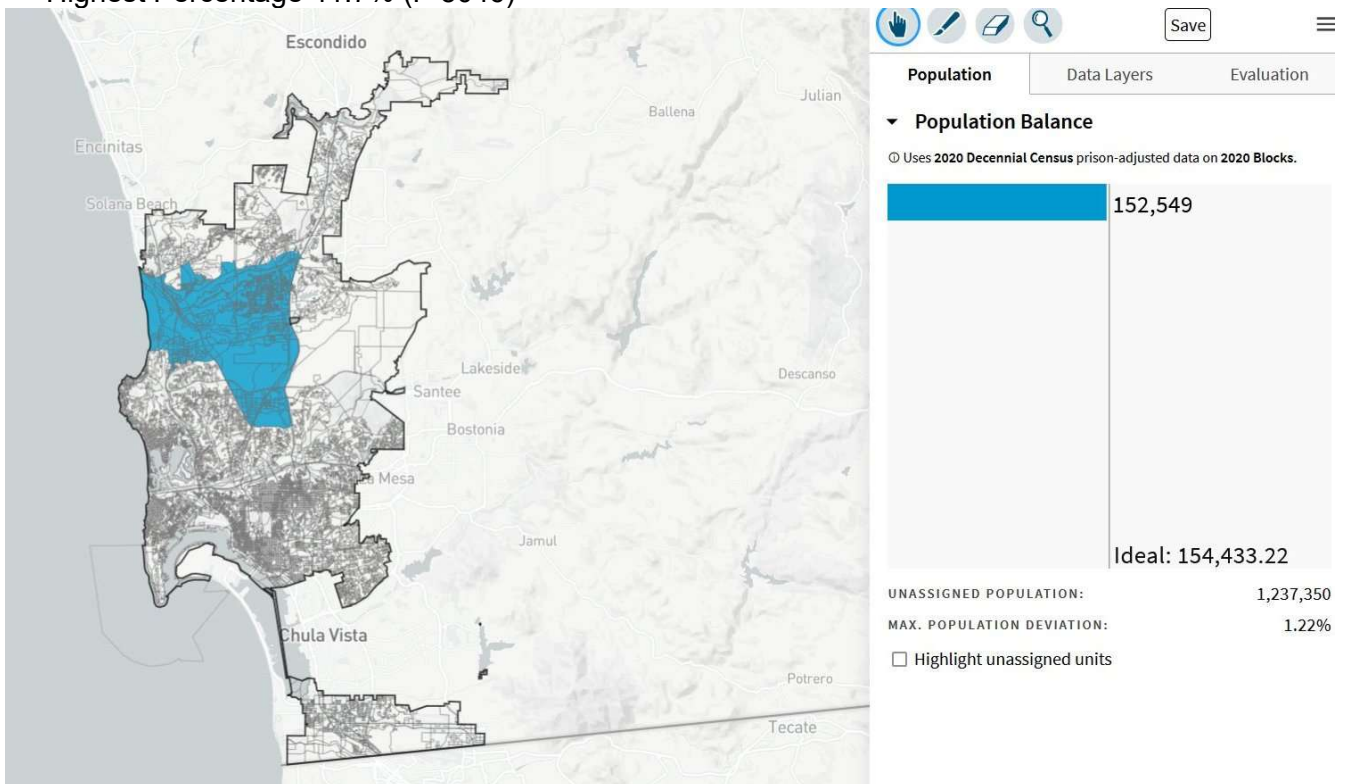
Highest Population 165,929 (P 5128) This map includes all of Torrey Hills Planning area.



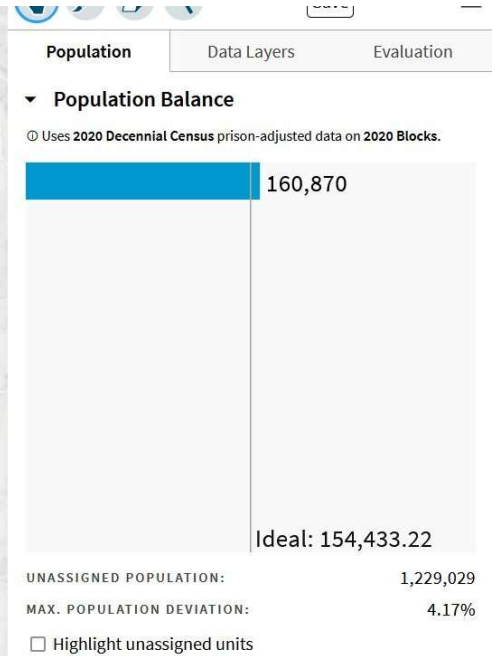
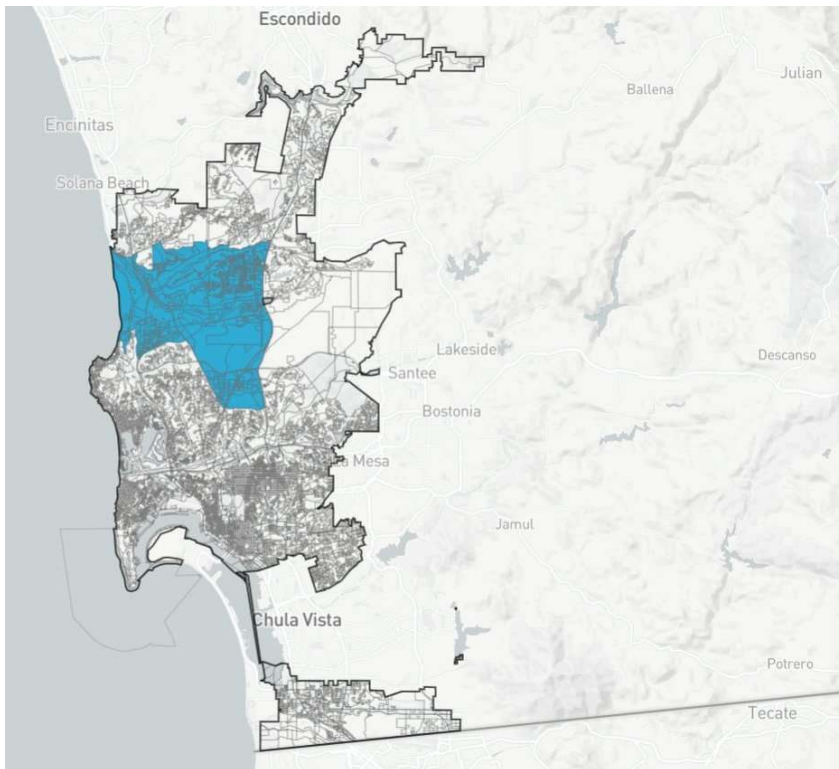
Lowest Percentage 30.6% (P 5130)



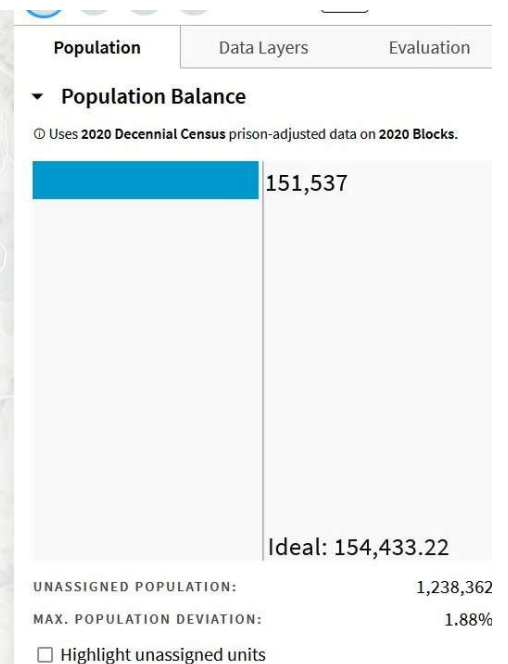
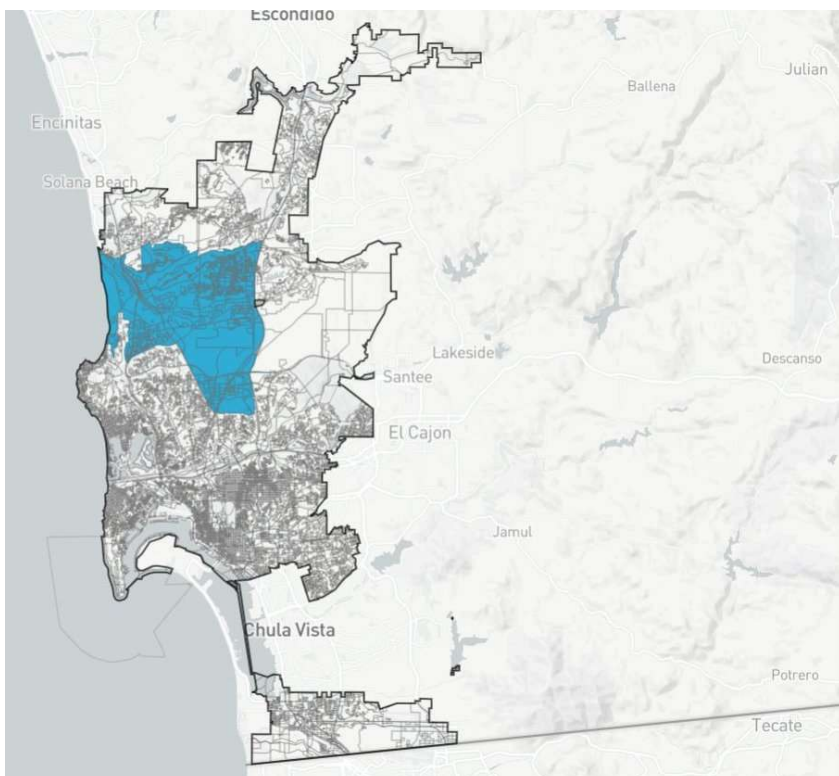
Highest Percentage 41.7% (P 5046)



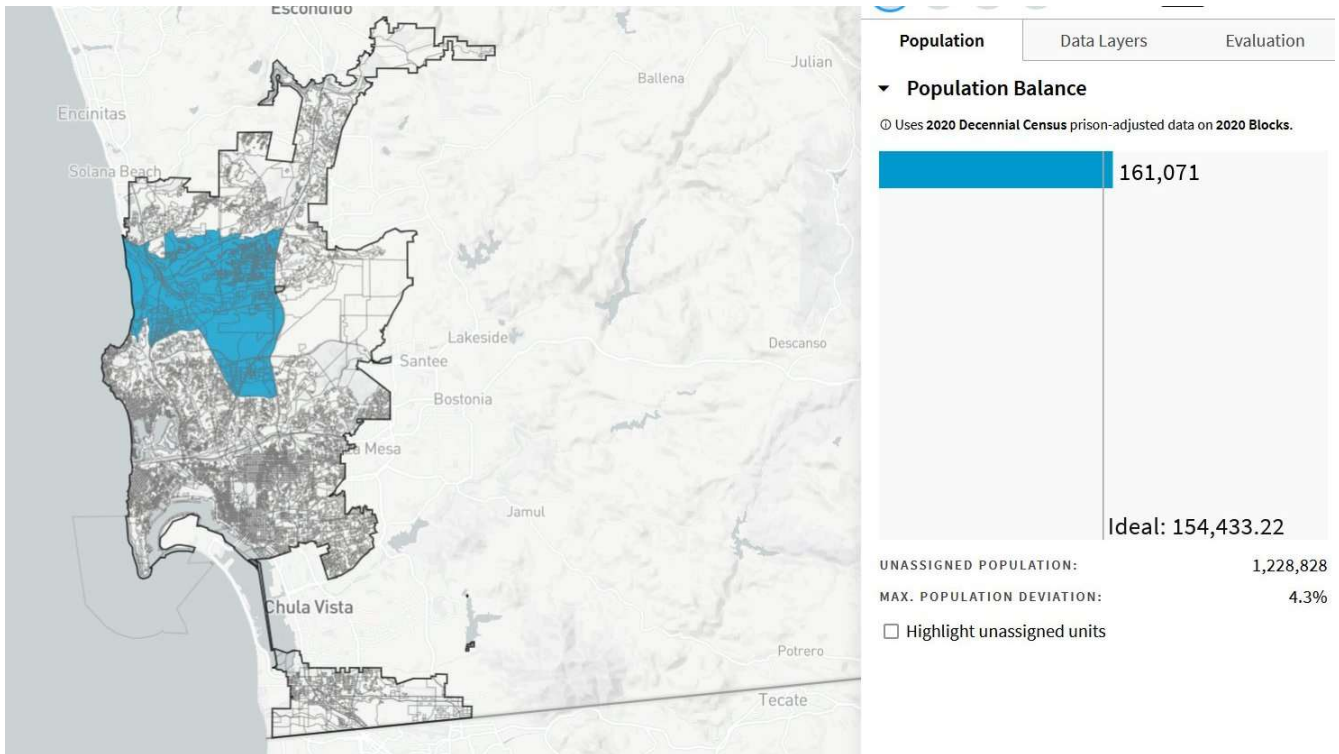
Removes part of UCSD (P 5048)



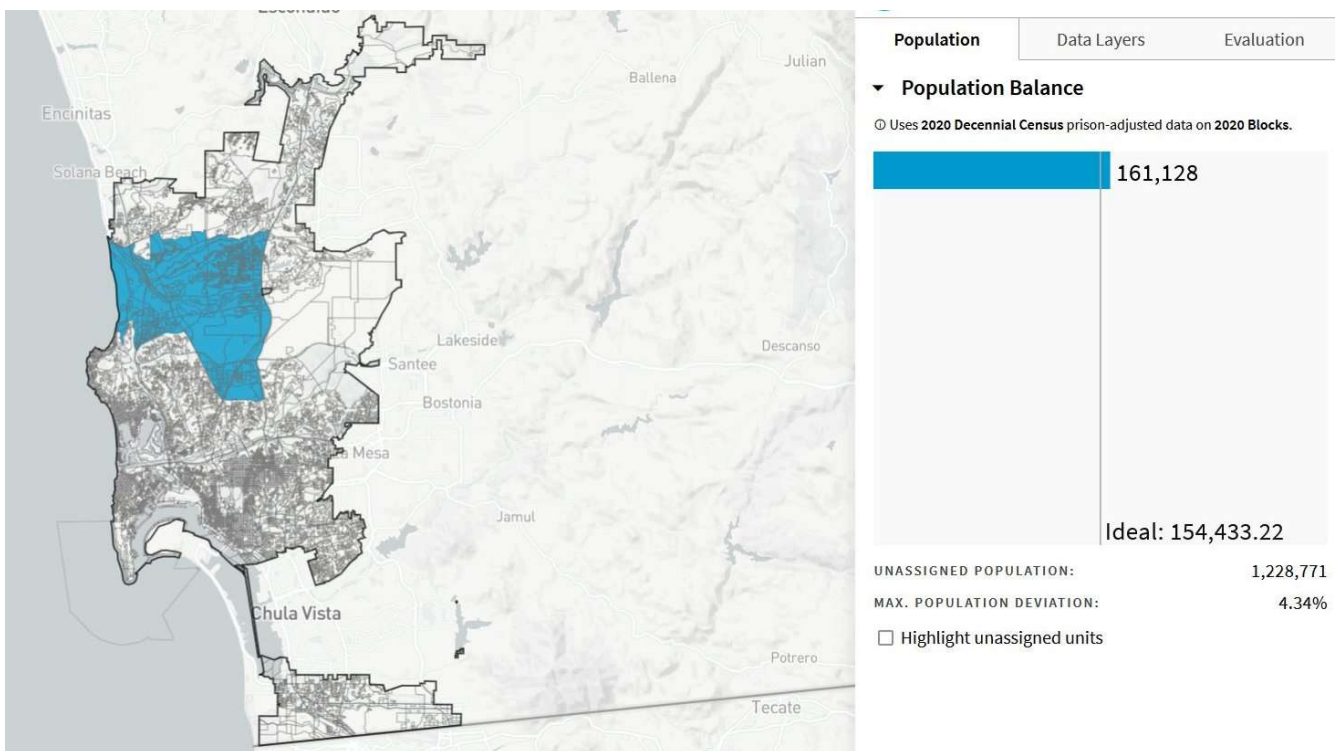
Removes part of UCSD (P 5146)



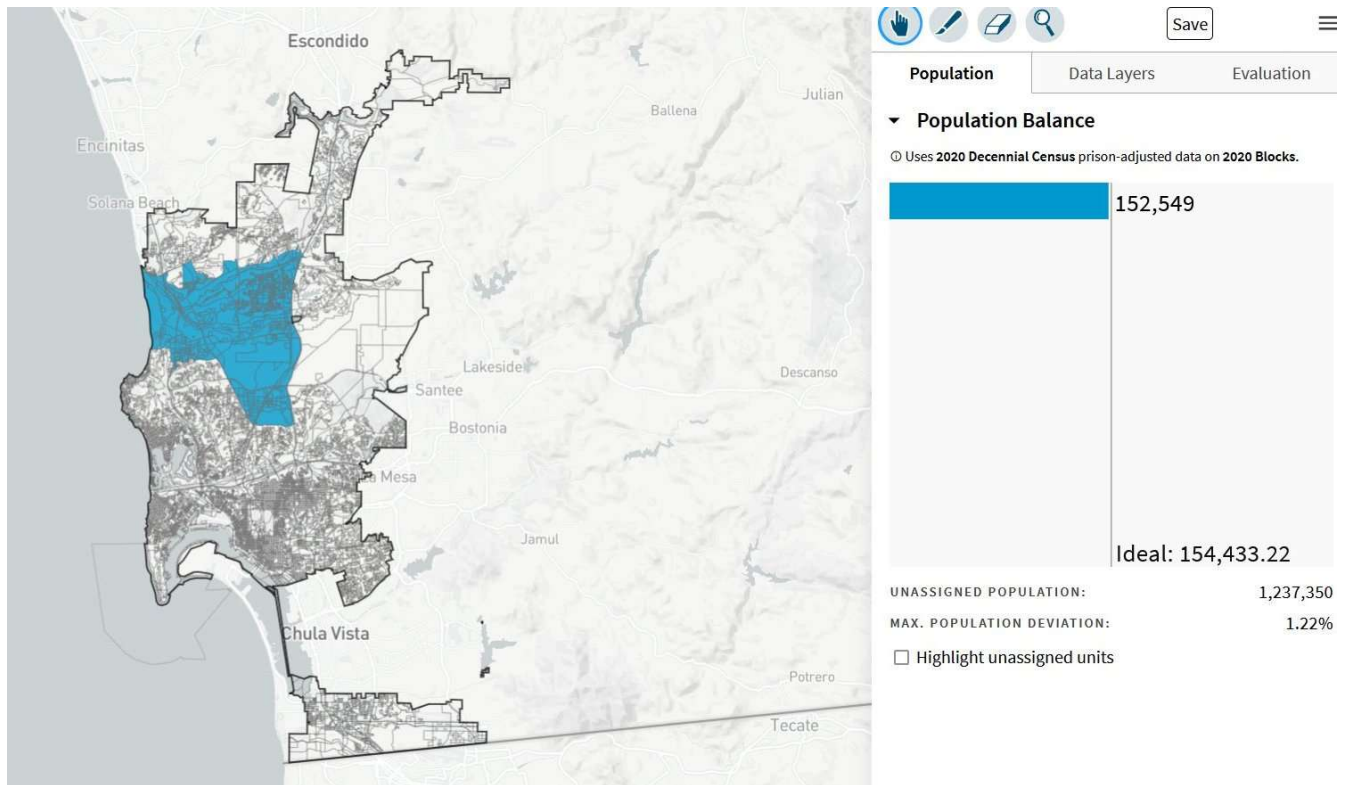
Removes part of UCSD and isolates sections of La Jolla Shores (P 5055)



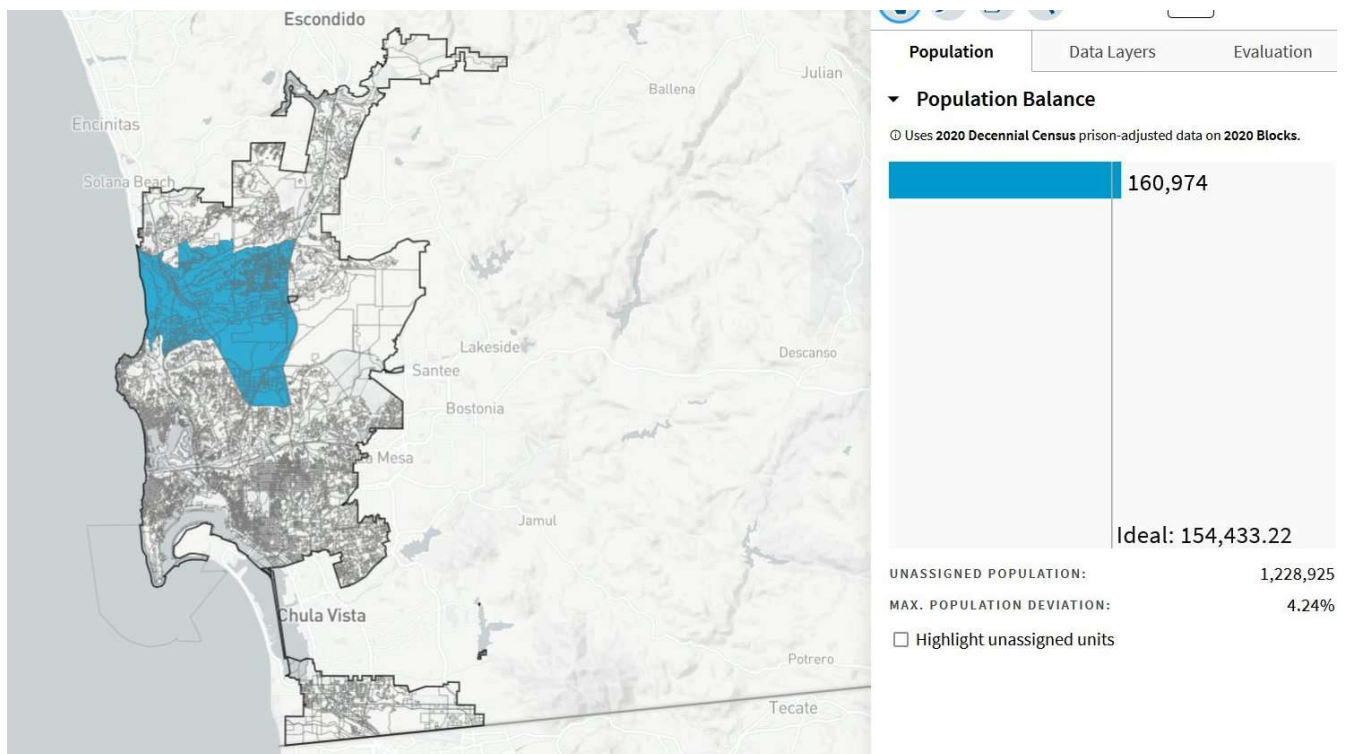
Removes part of UCSD and random block in North University City (P 5059)



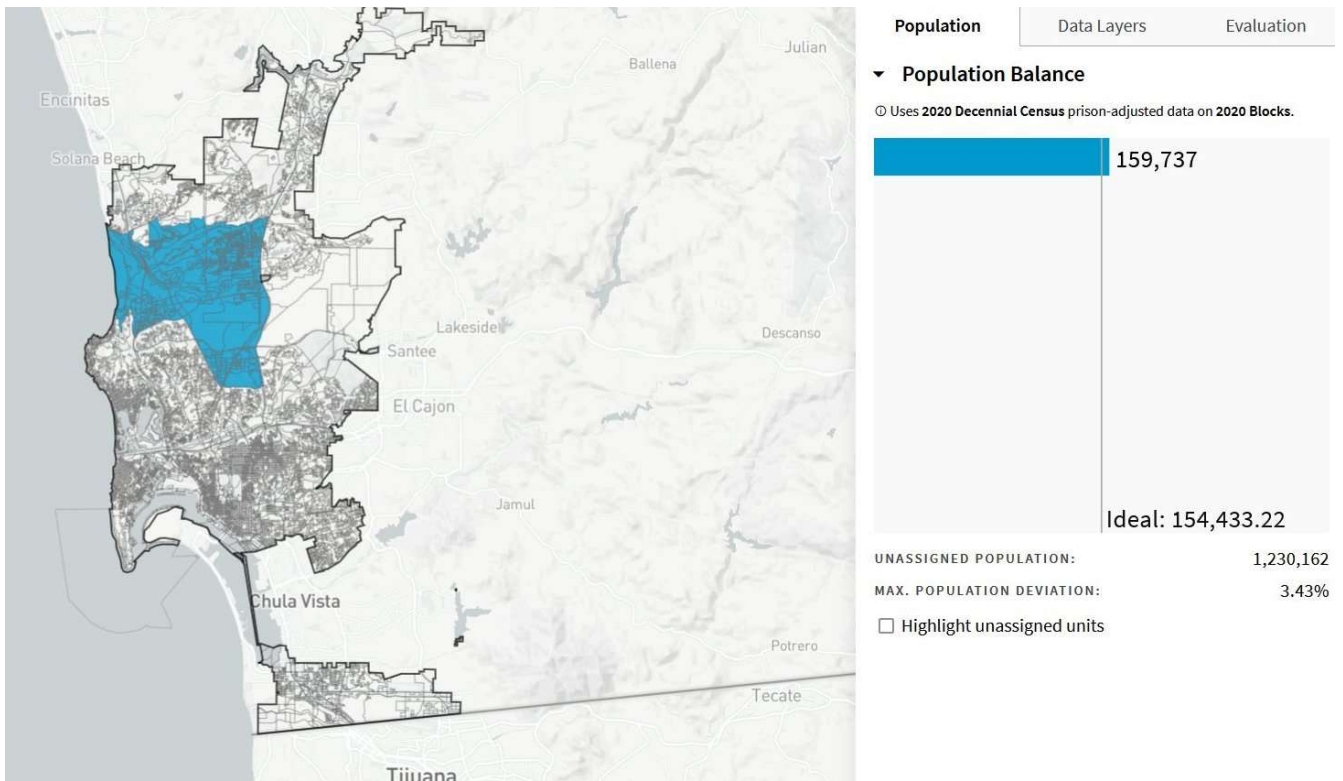
Removes UCSD student housing, Scripps Institution of Oceanography, all of the La Jolla Shores Planned District, and parts of La Jolla Colony and North University City (P 5046)



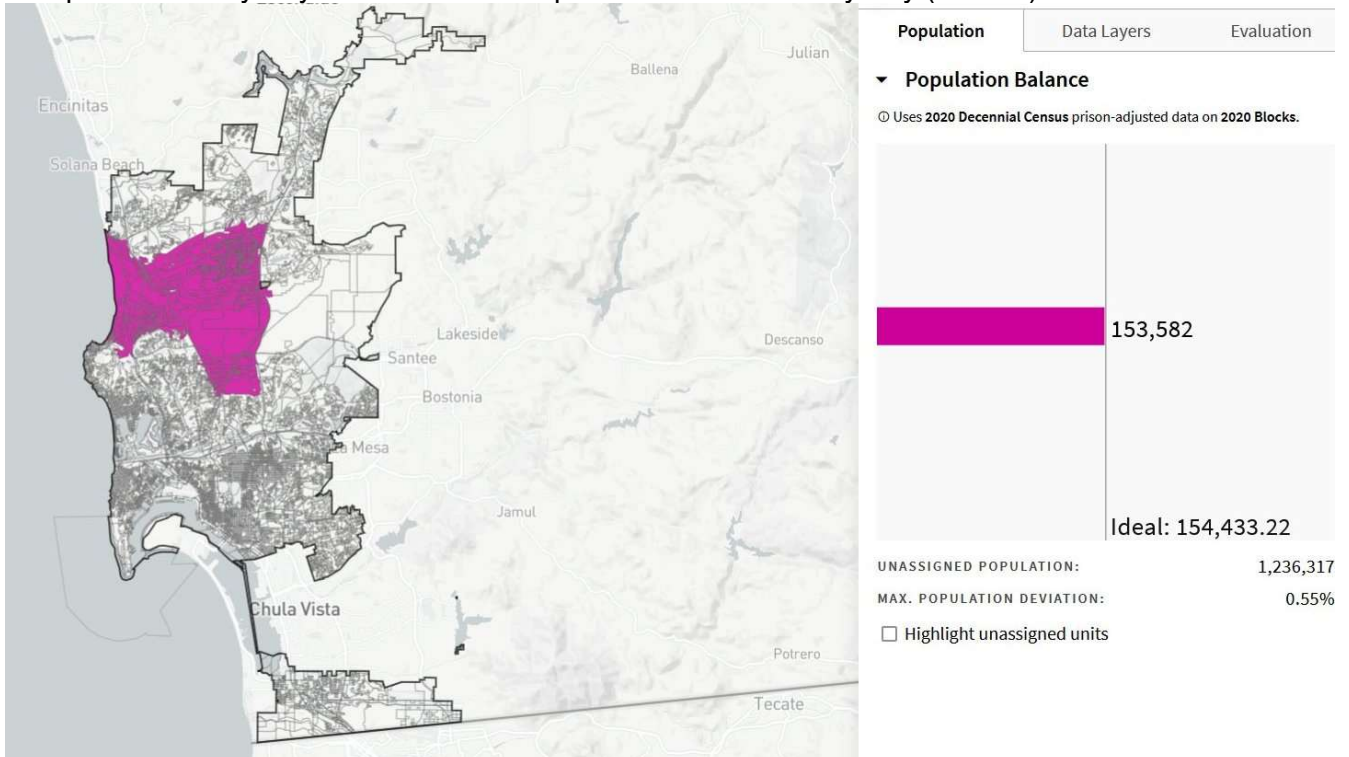
Removes part of Scripps Institution of Oceanography (P 5047)



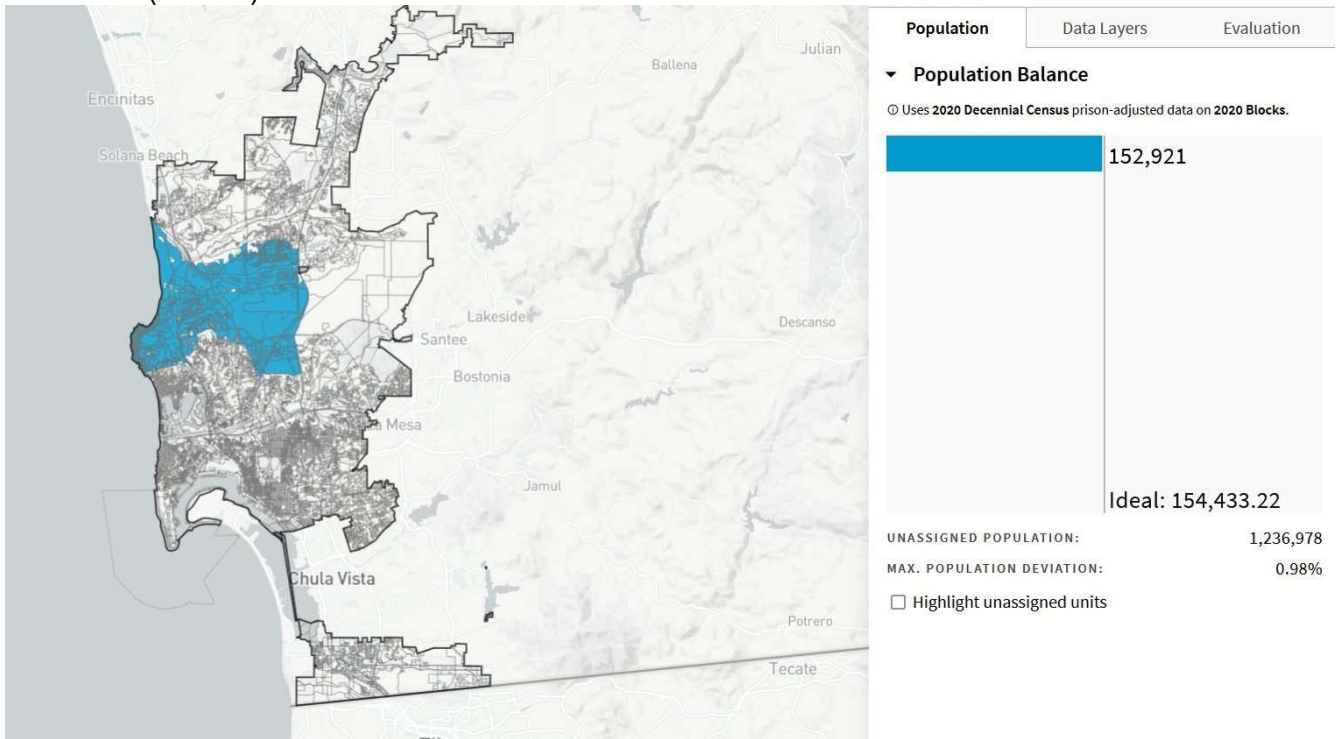
Removes part of Scripps Institution of Oceanography and makes random holes in the map (P 5057)



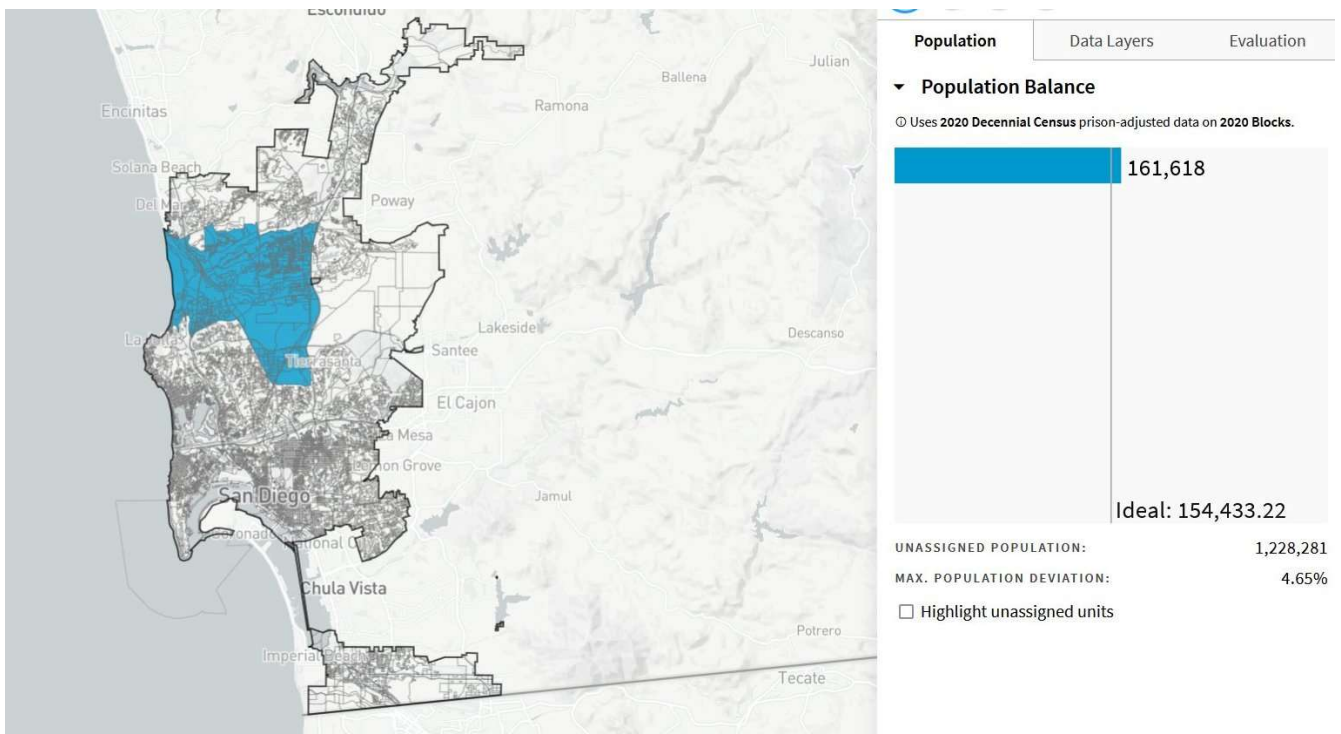
Splits University City Eruv and isolates part of South University City (P 5096)



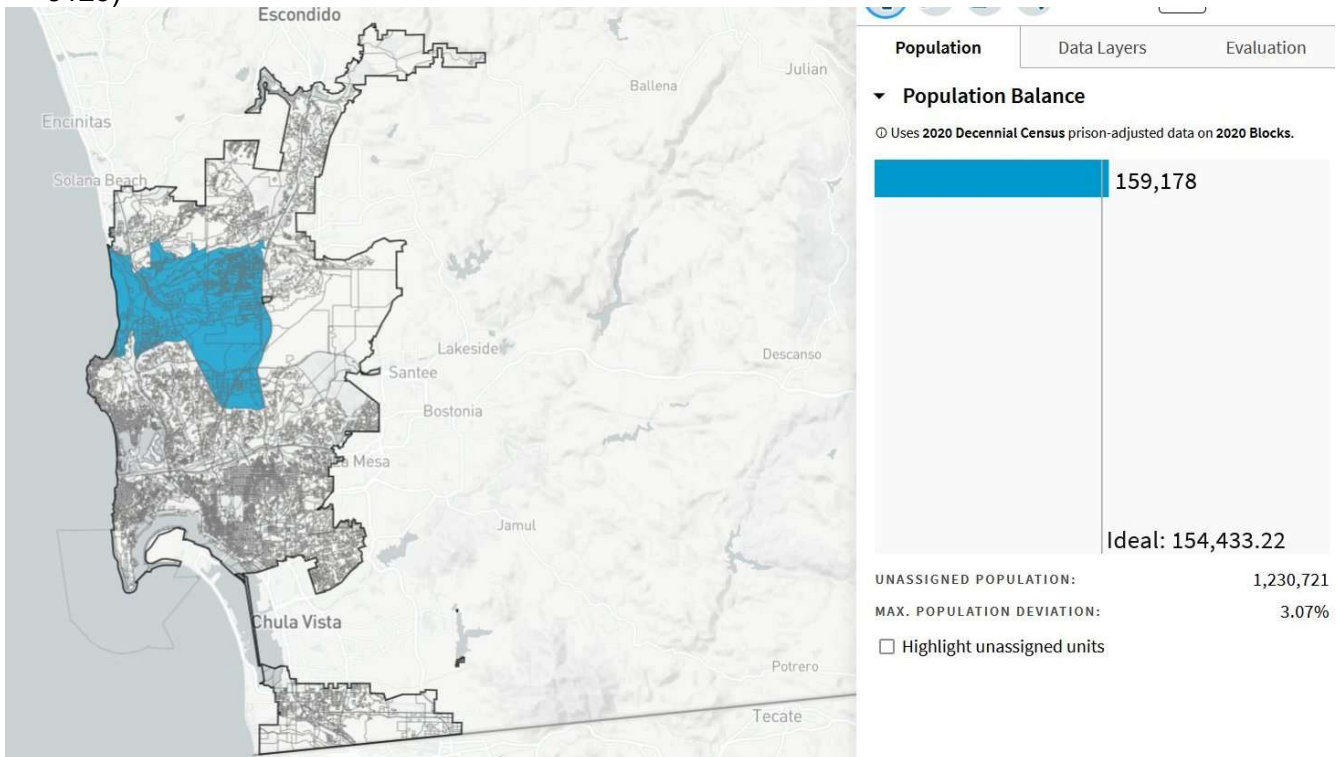
Splits University City Eruv, isolates part of South University City, excludes all of Torrey Hills, Carmel Valley, Del Mar Mesa and most of Torrey Pines Planning Areas. Originator of this map posted that the map was in error and La Jolla should have been excluded from the proposed district. (P 5130)



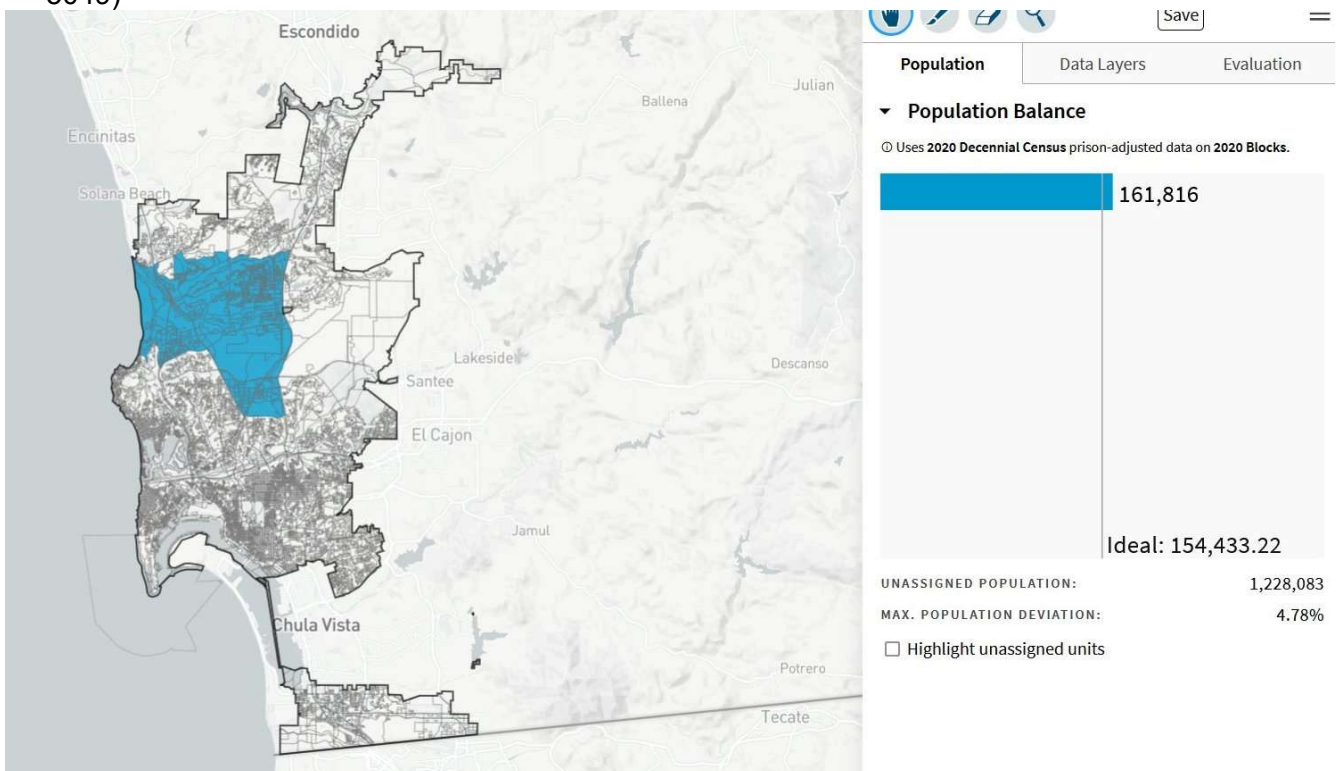
Isolates some of the population by leaving out blocks (P 5134)



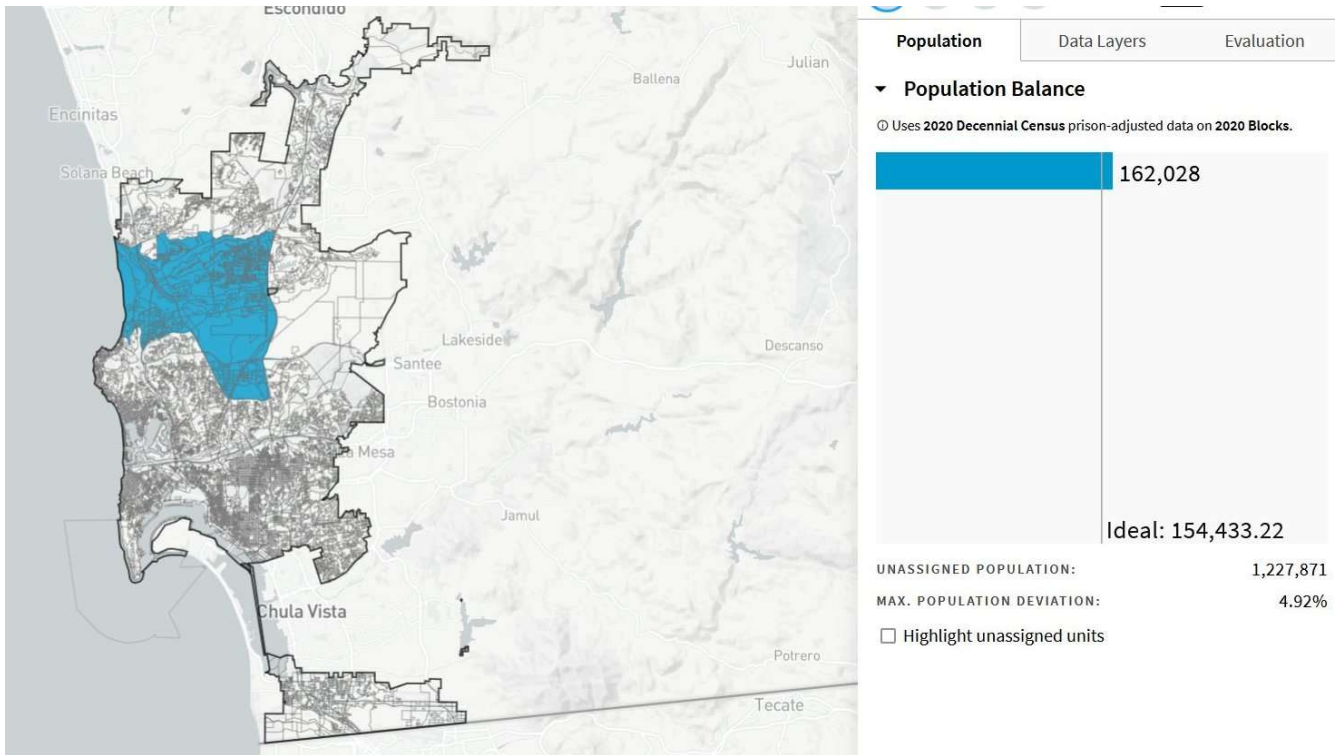
Major Transportation Intersection is in 2 districts. The “Throat,” which is the intersection of Torrey Pines Road, La Jolla Shores Drive and La Jolla Parkway is split between districts. (P 5123)



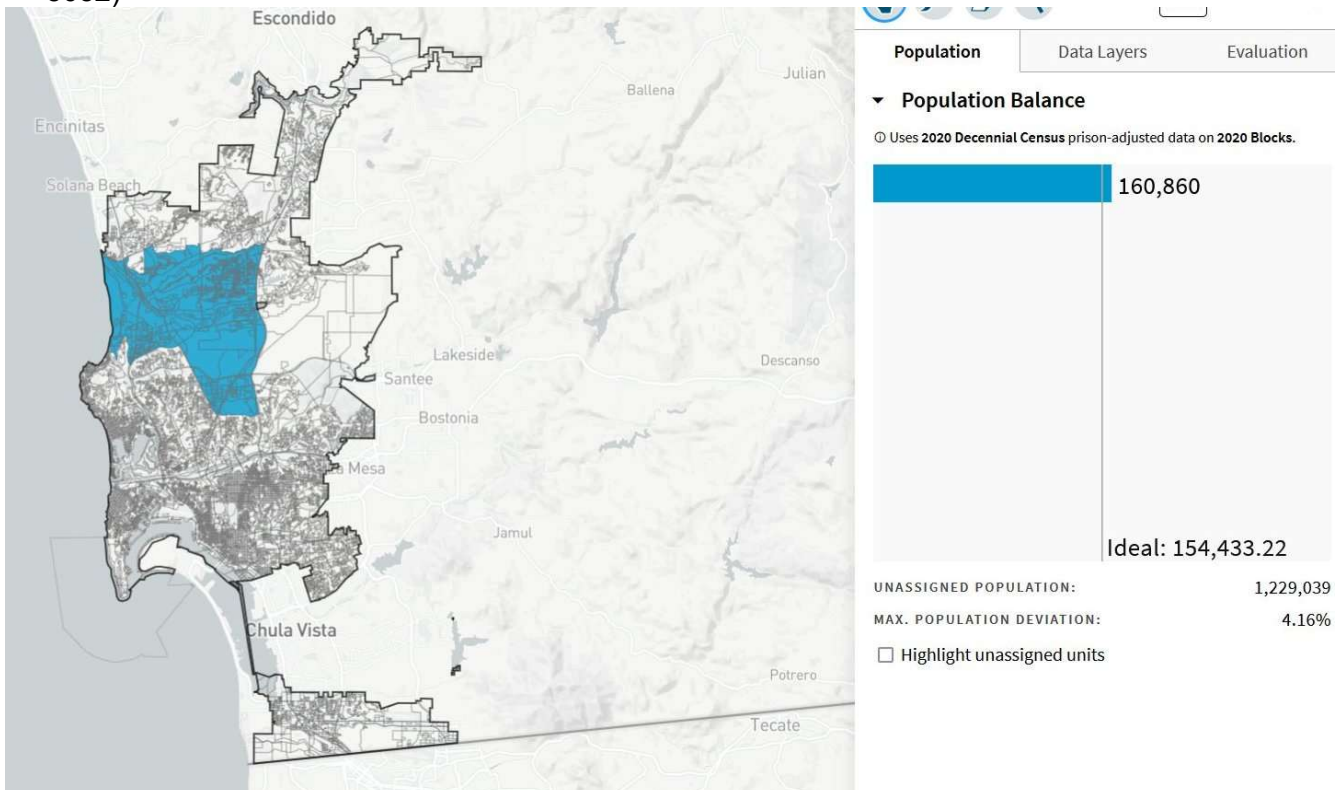
Montoro has access and is entirely within D6/La Jolla Shores down to Calle del Oro is in D6 (P 5049)



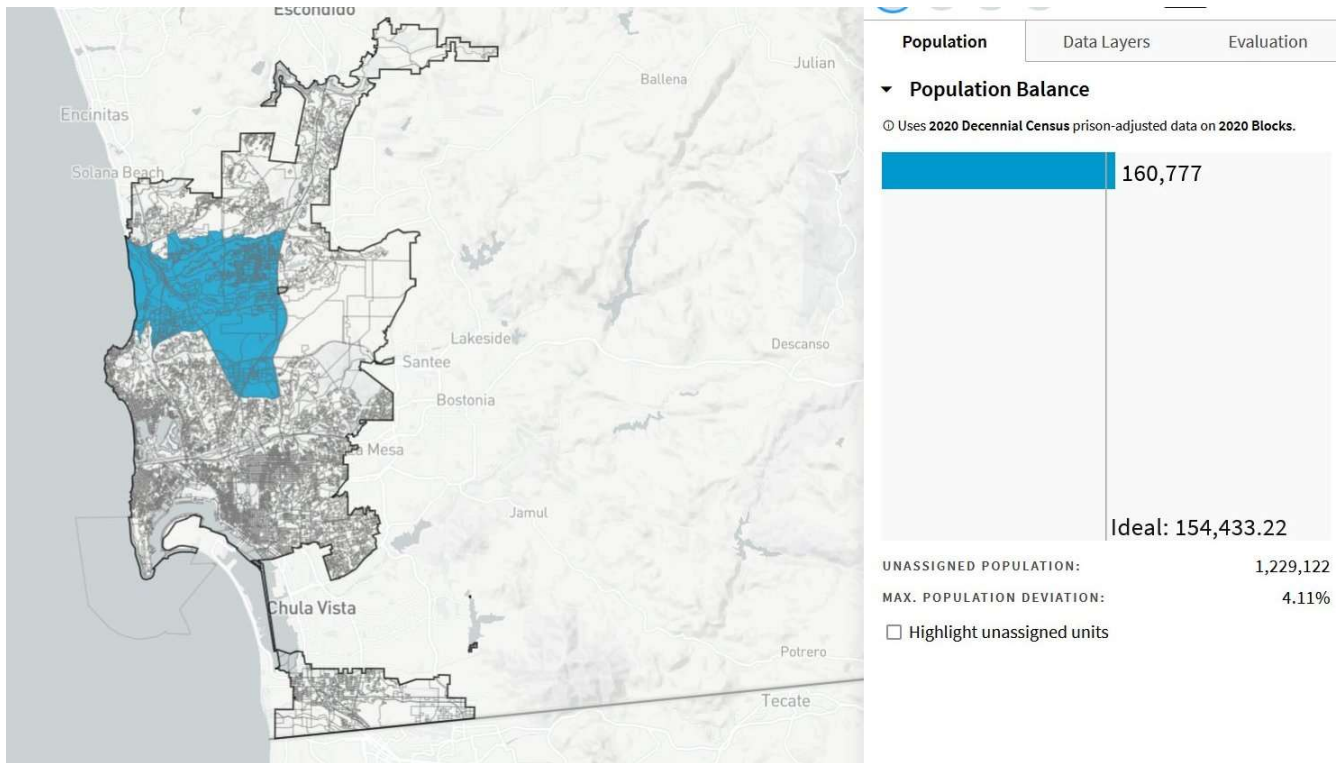
Montoro has access and is entirely within D6/ LJS down to Calle del Oro is in D6, the ocean front houses are not in D6 and all of the Torrey Hill Planning area is in D6 (P 5054)



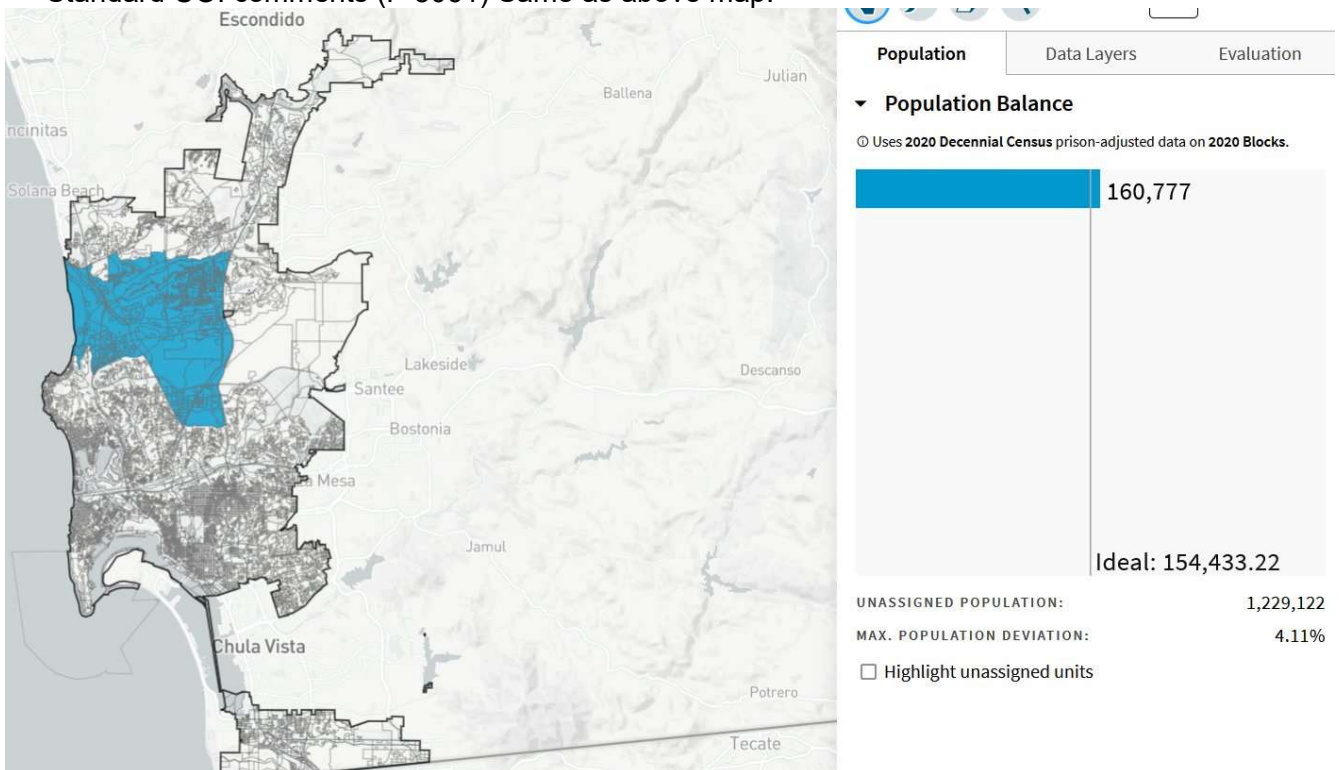
Miscellaneous blocks removed from the proposed district creating a lack of connectivity (P 5052)



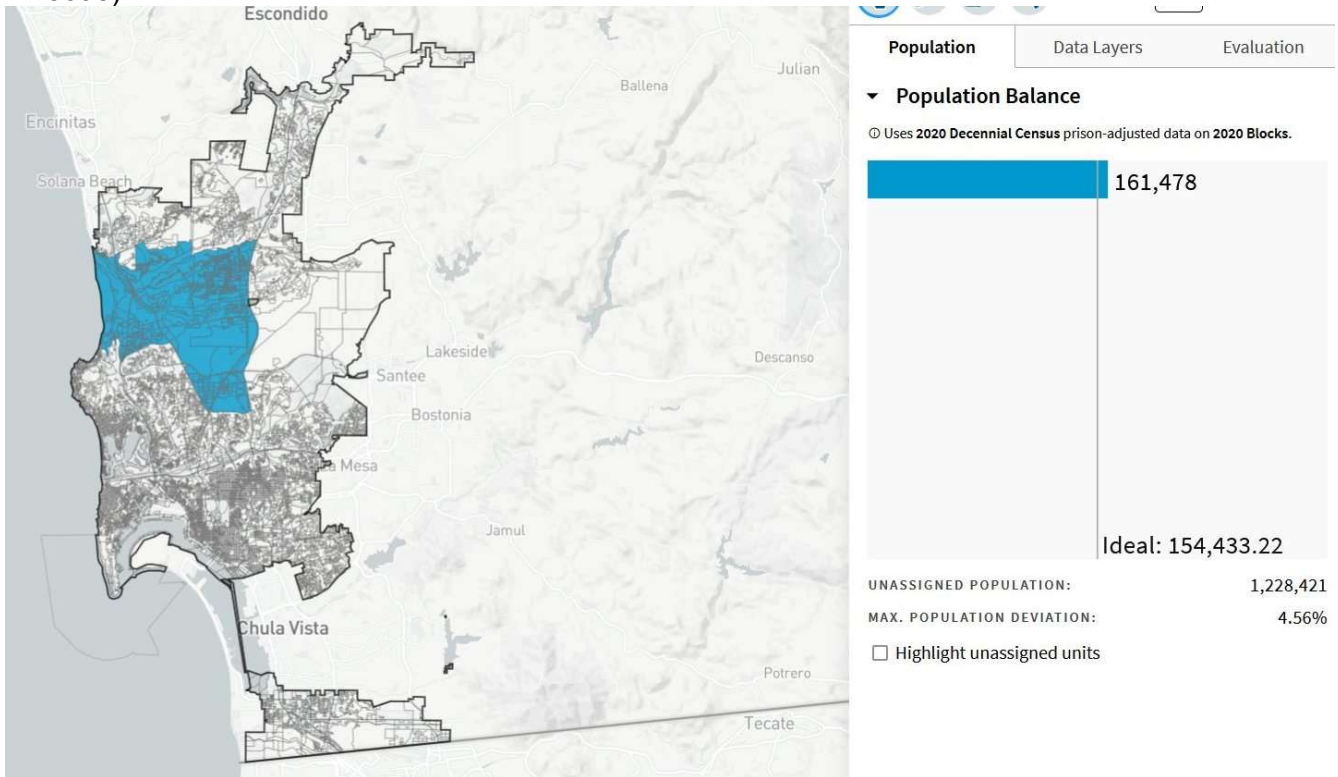
Standard COI comments (P 5056)



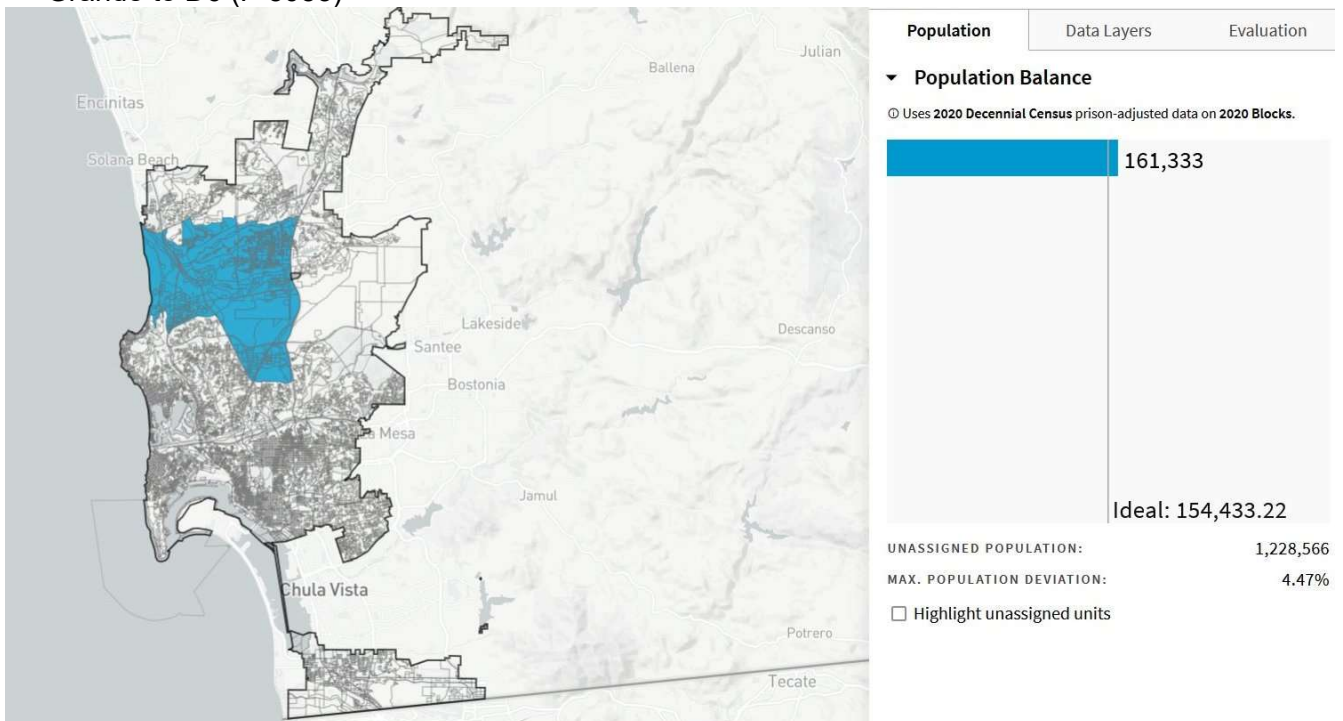
Standard COI comments (P 5061) Same as above map.



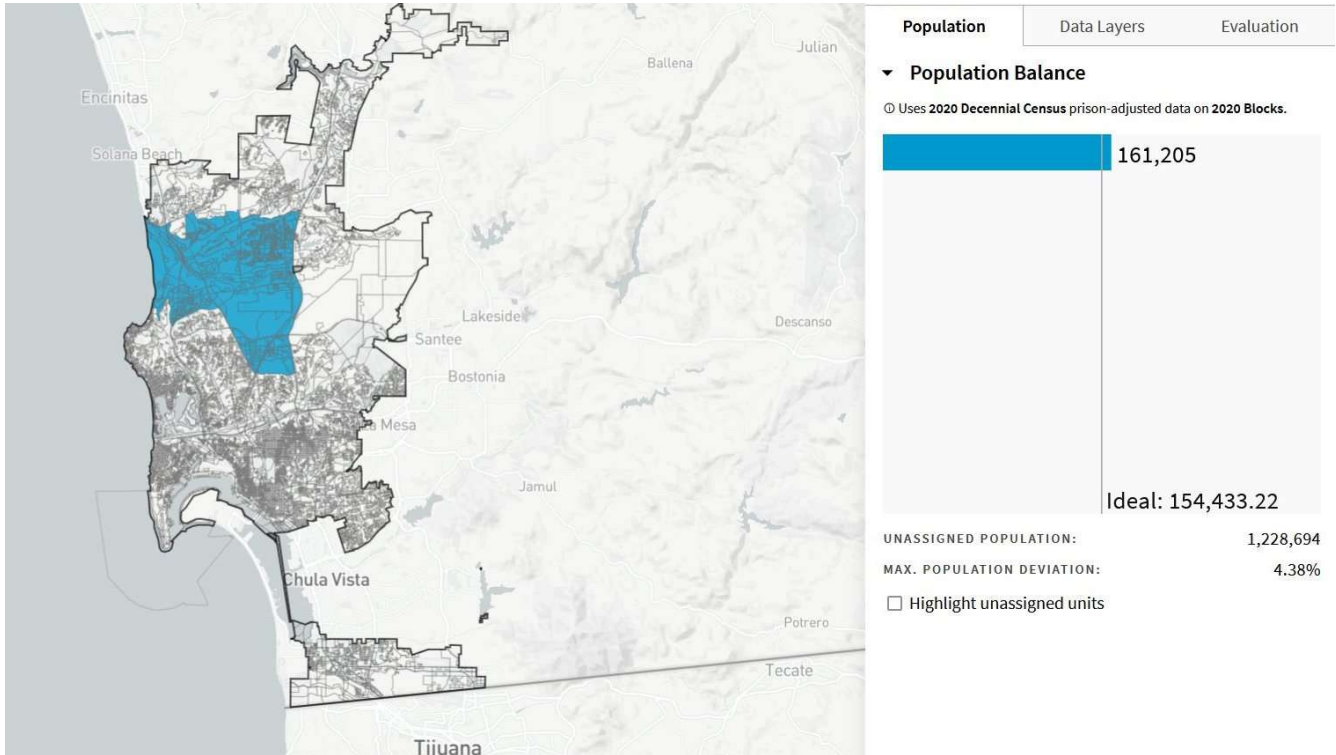
Miscellaneous blocks removed from the proposed district creating a lack of connectivity (P 5098)



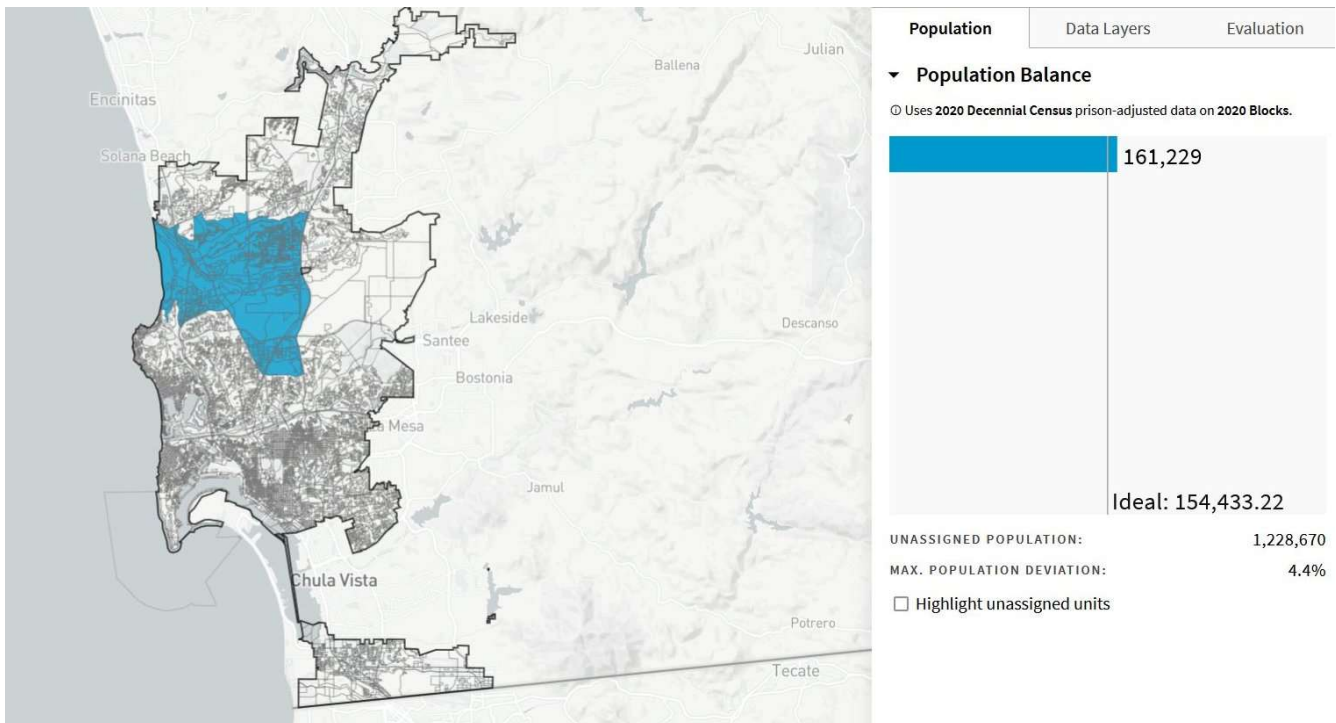
Adds one block in LJS bounded by La Jolla Shores Drive, Camino del Collado and El Paseo Grande to D6 (P 5053)



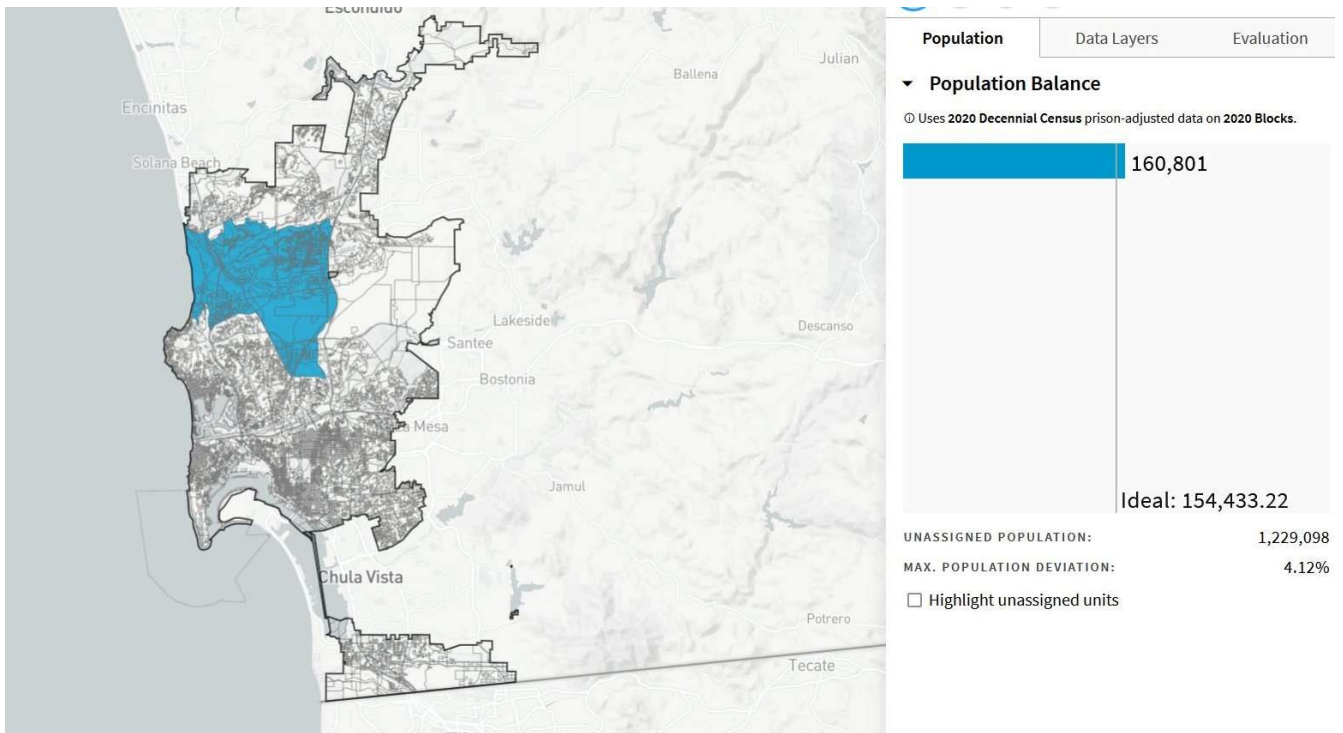
Standard COI comments (P 5060)



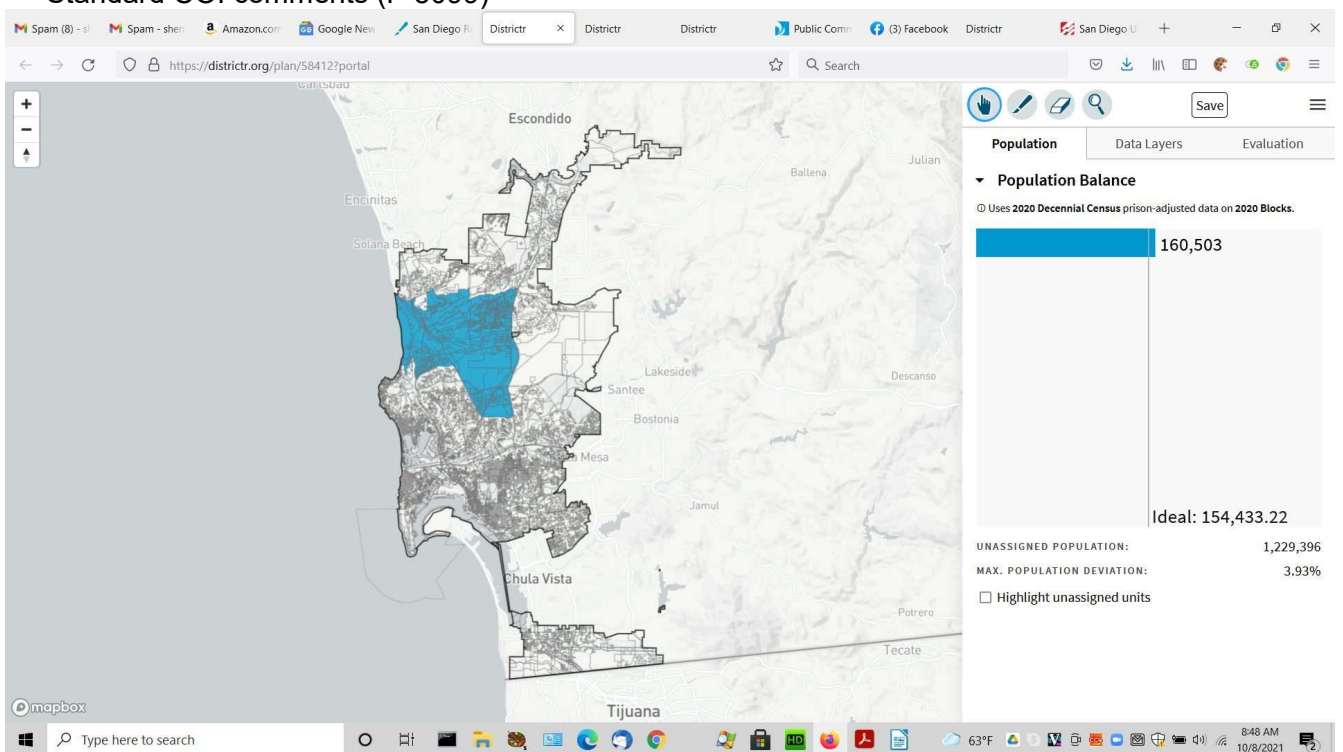
Standard COI comments (P 5062)



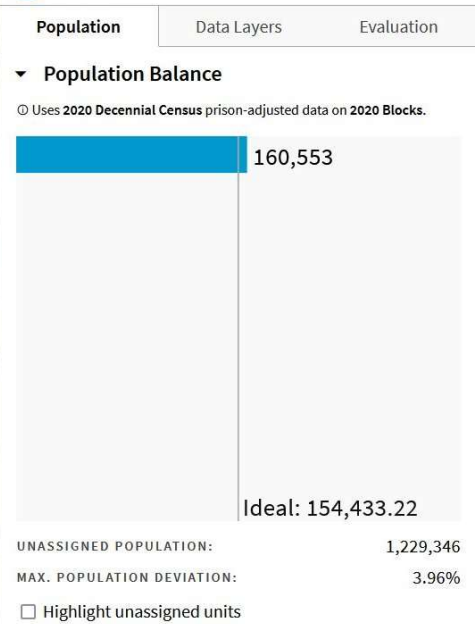
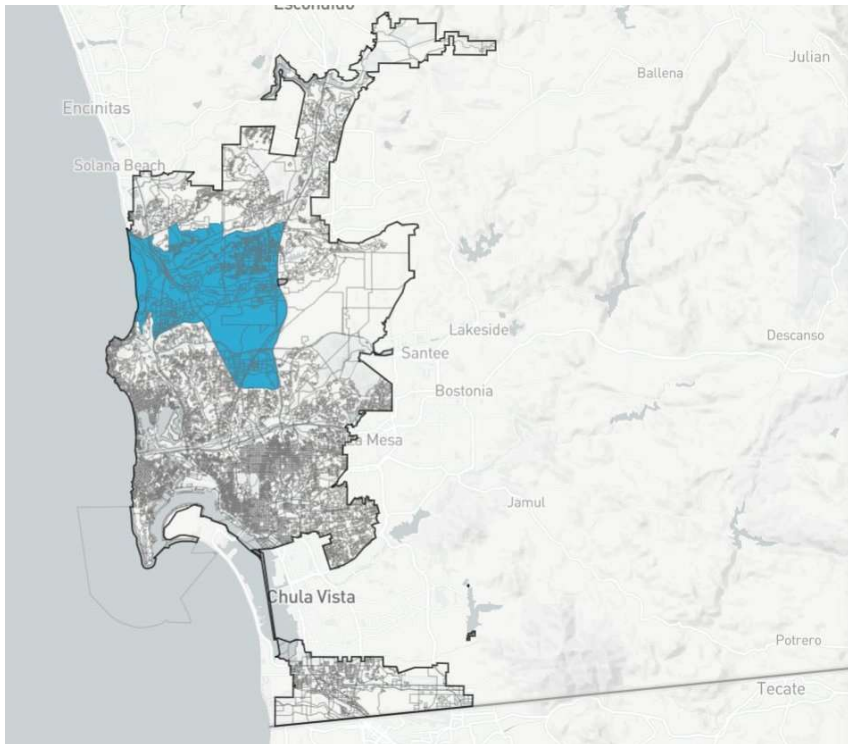
Standard COI comments (P 5097)



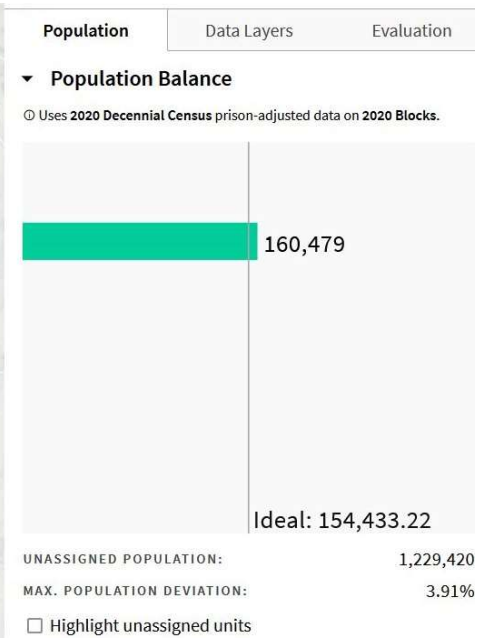
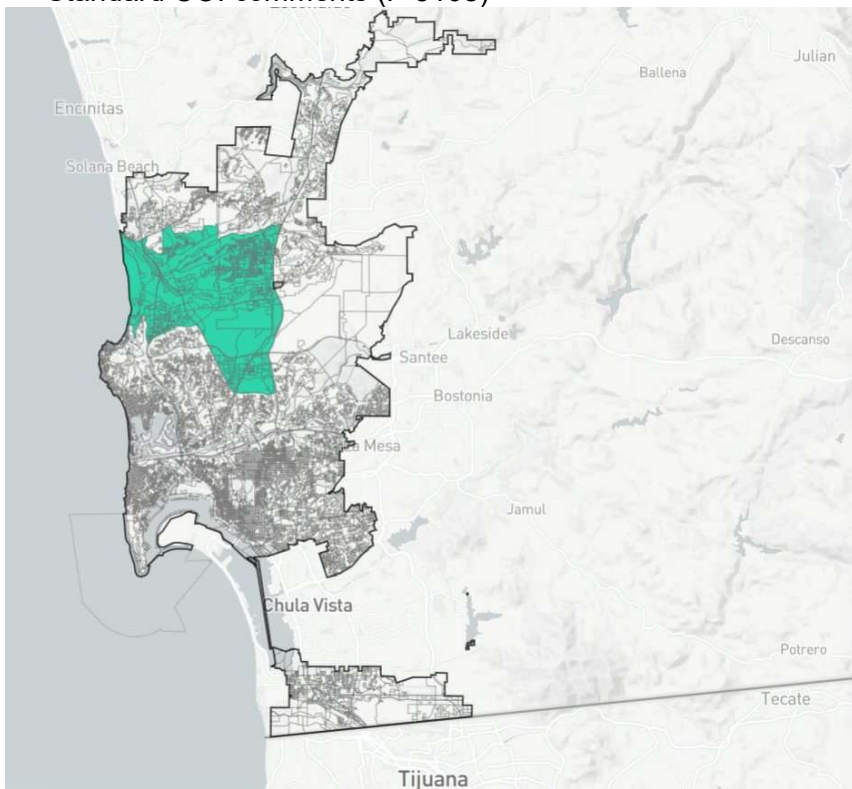
Standard COI comments (P 5099)



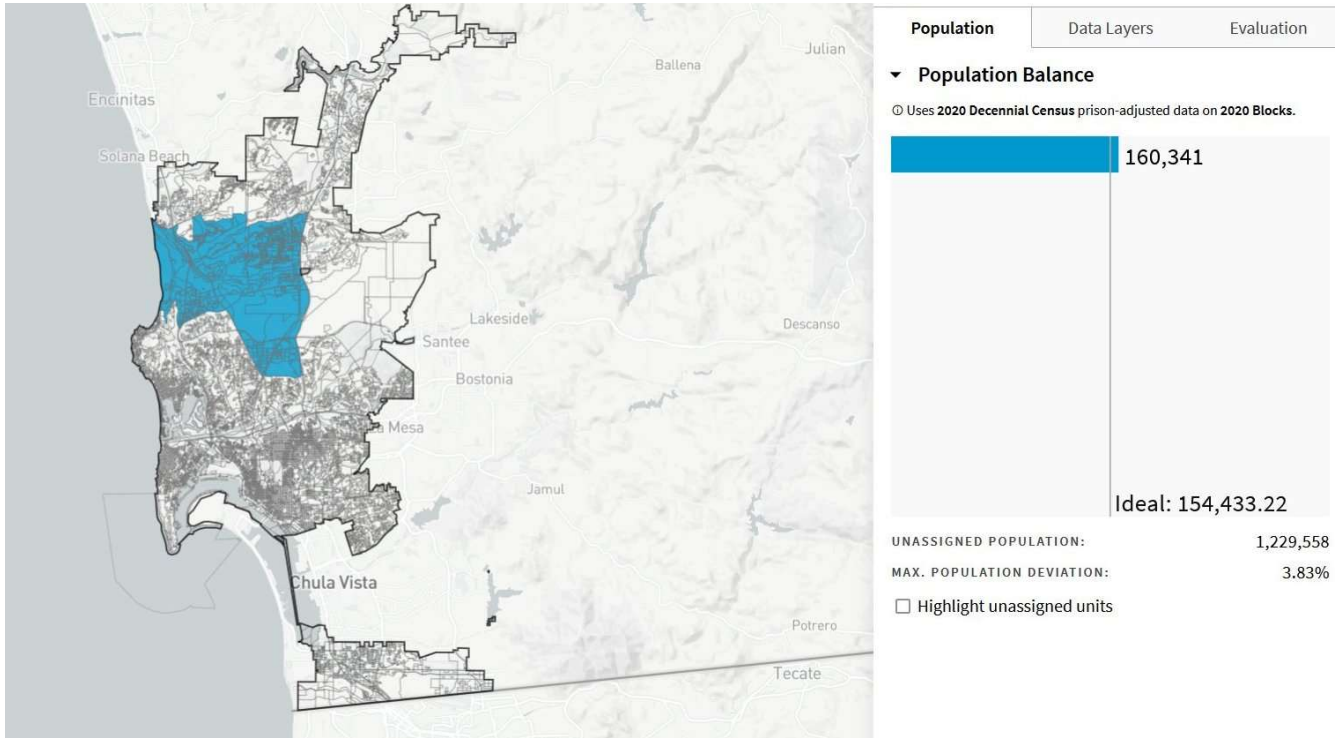
Standard COI comments (P 5103)



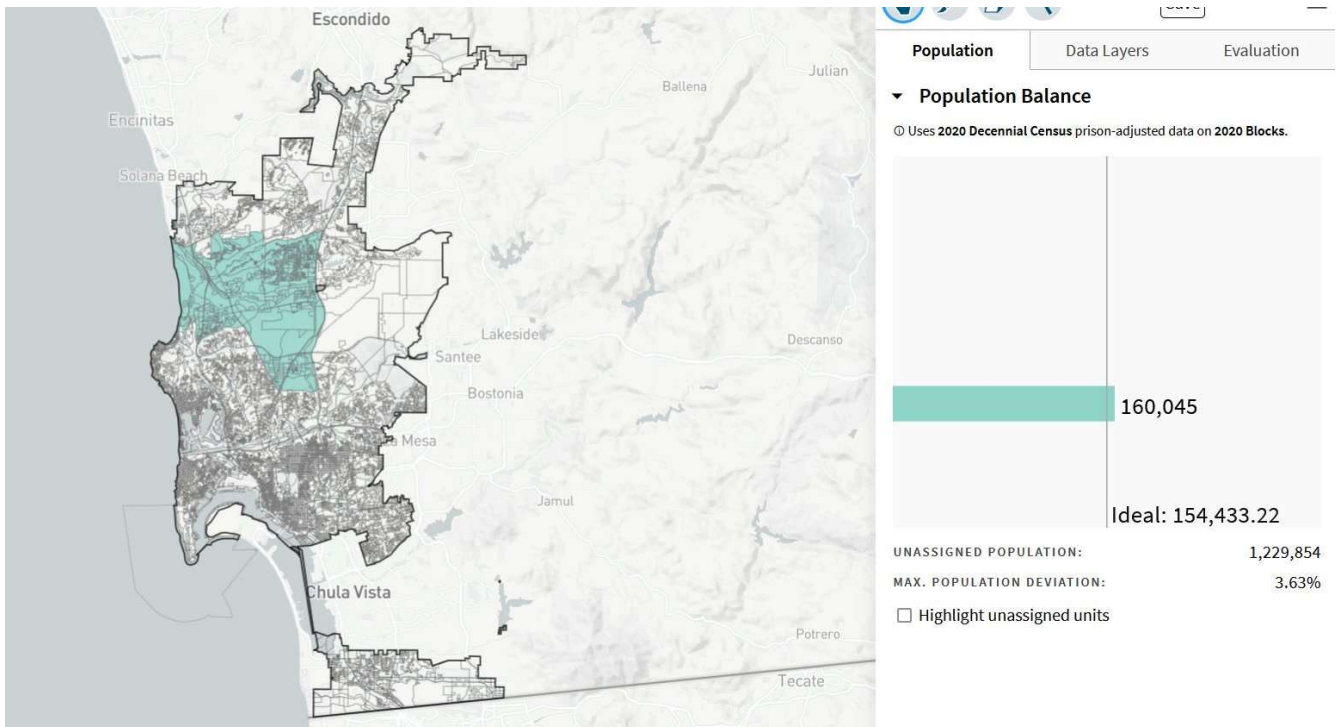
Standard COI comments (P 5108)



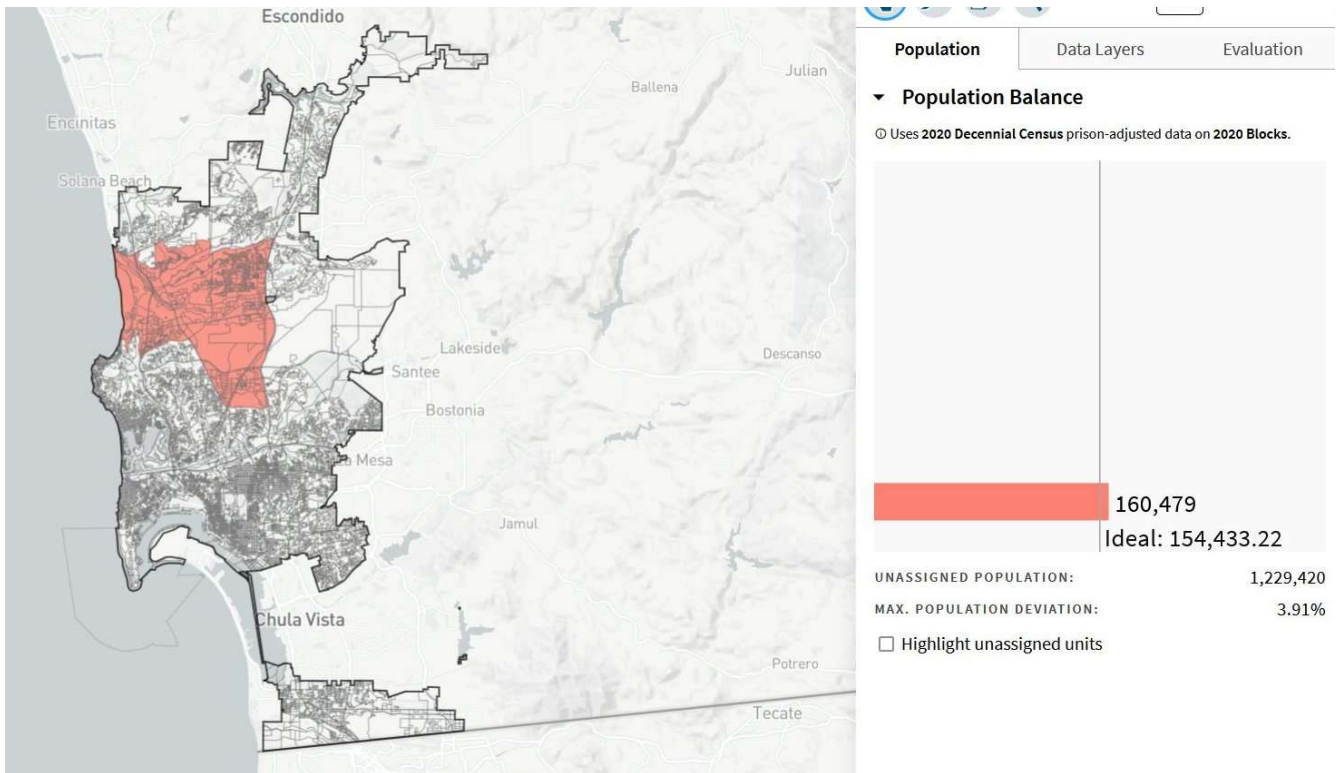
Standard COI comments (P 5114)



Standard COI comments (P 5125)



Standard COI comments (P 5126)



A preliminary APAC map was submitted to the Redistricting Commission by Stephen Hsieh via email with an internet address of <http://districtr.org/plan/57717>. This proposed map has a population of 154,746 which is 38.7% Asian and has an unassigned population 1,235,096. This map splits D1's COI by removing La Jolla and most of the University Community planning areas from the proposed district. It splits the University Community, Torrey Pines and Del Mar Mesa planning areas and takes all of Torrey Hills and Carmel Valley planning area.

