

Rancho Penasquitos Whole in D5

10/24/21

Prepared and submitted by:

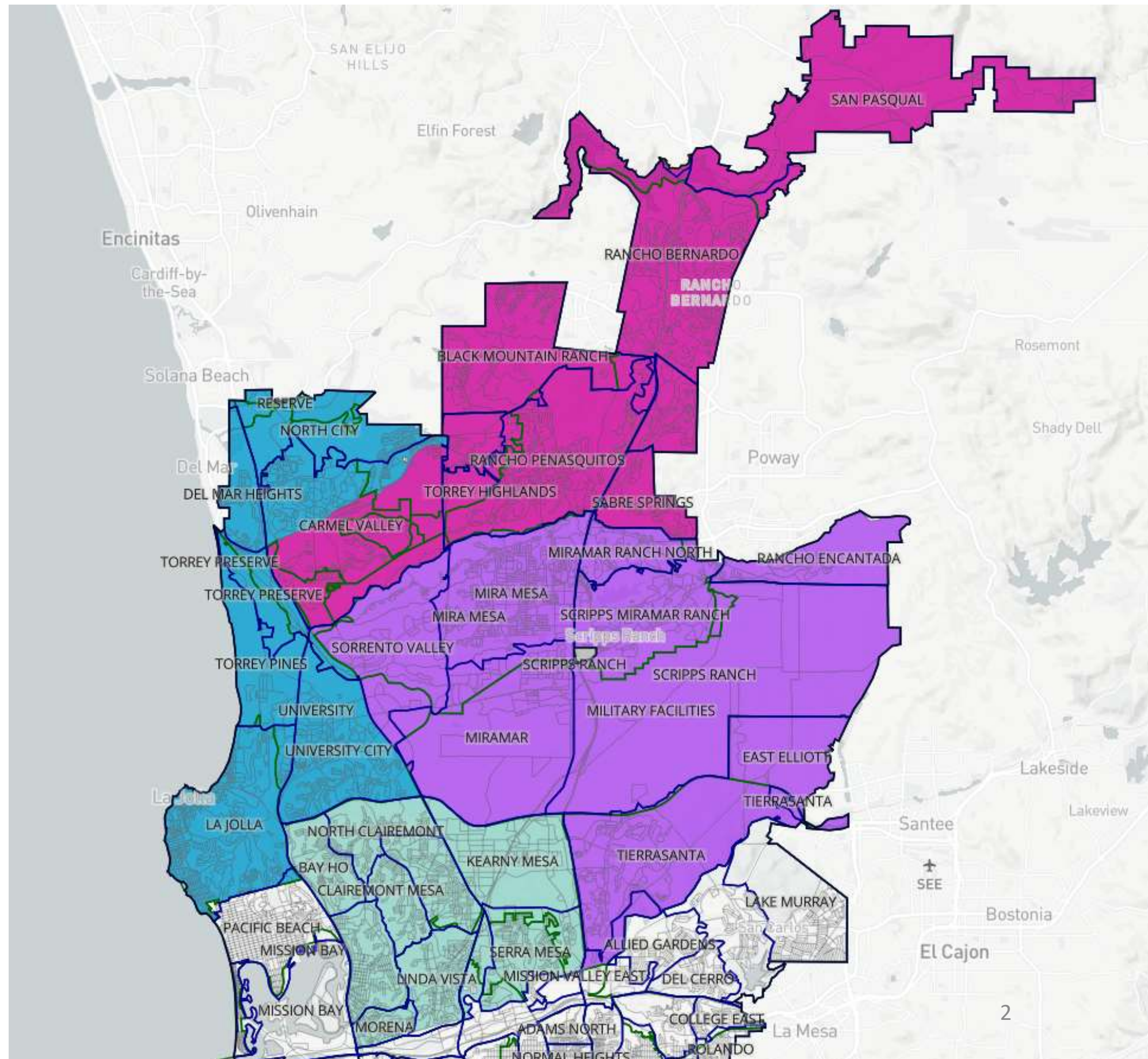
Tim Dougherty

<https://portal.sandiego-mapping.org/submission/p5982>

<https://districtr.org/plan/69243>

Rancho Penasquitos Whole in D5

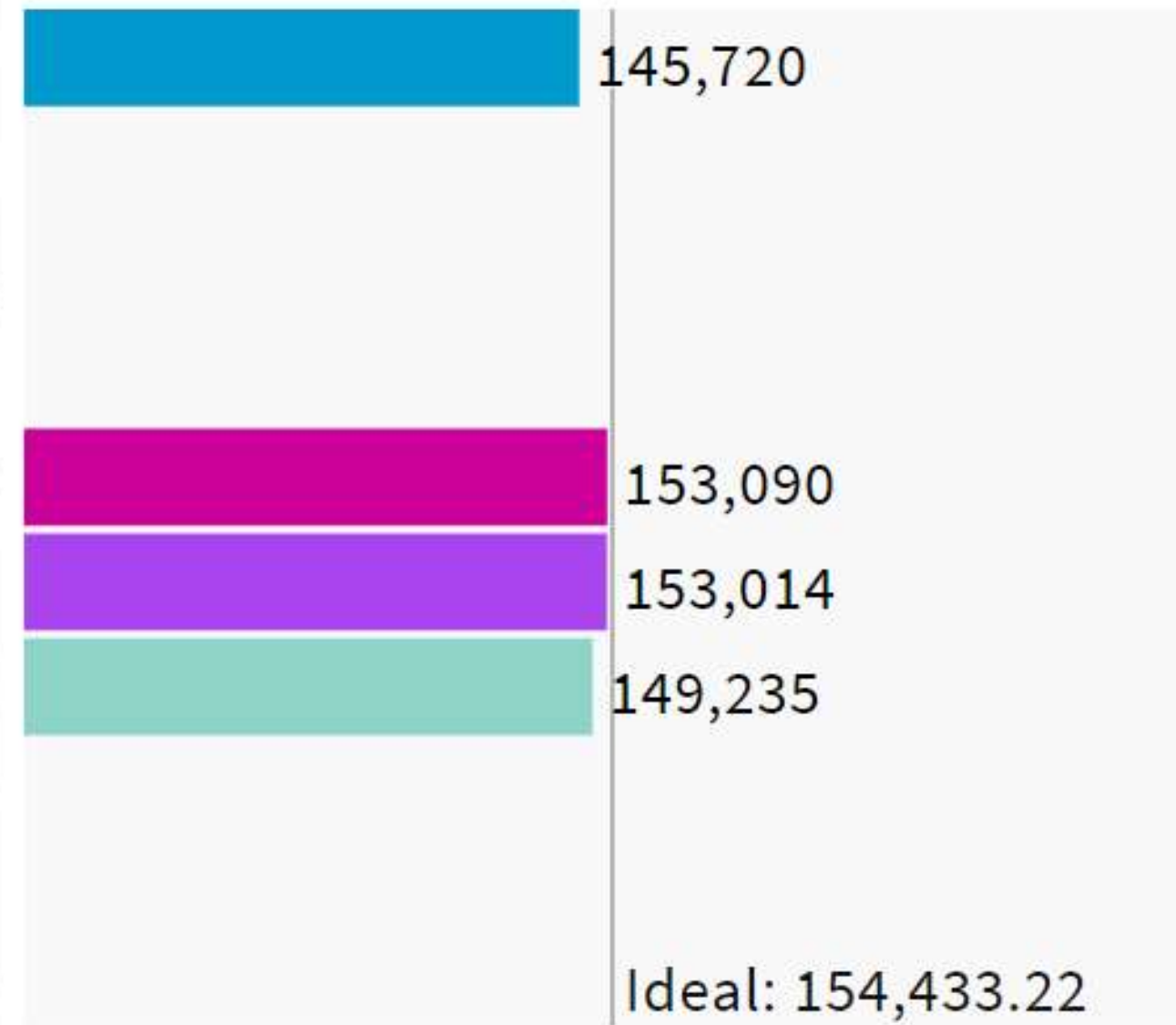
- [p5982](#)
- [69243](#)



by Tim Dougherty

Population Balance

① Uses 2020 Decennial Census prison-adjusted data on 2020 Blocks.



UNASSIGNED POPULATION: 788,840

MAX. POPULATION DEVIATION: 5.64%

Highlight unassigned units

Population by Race

COMPARE
 WITH
 AND

	White	Hispanic	Asian
1	55.9%	11.2%	25%
2	0%	0%	0%
3	0%	0%	0%
4	0%	0%	0%
5	49.6%	11.1%	30%
6	38.6%	14.7%	34.9%
7	48.9%	24.2%	15%
8	0%	0%	0%
9	0%	0%	0%
Overall	40.7%	29.7%	17.5%

Voting Age Population by Race

COMPARE
 WITH
 AND

	WVAP	HVAP	AVAP
1	57.5%	10.6%	25.2%
2	0%	0%	0%
3	0%	0%	0%
4	0%	0%	0%
5	52.7%	9.9%	29.8%
6	40.4%	13.2%	36.3%
7	51.5%	21.8%	16%
8	0%	0%	0%
9	0%	0%	0%
Overall	43.7%	27.1%	18%

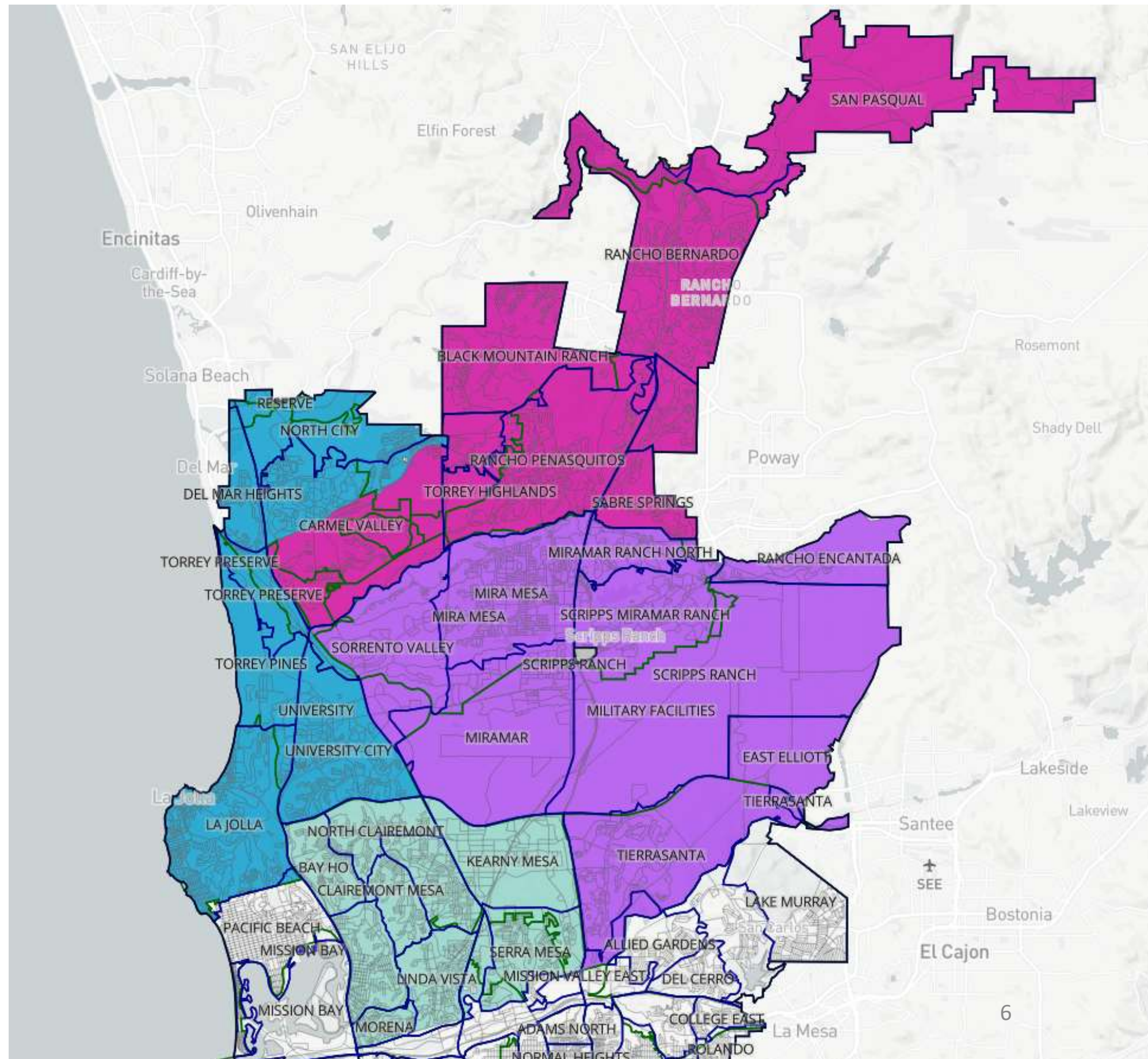
Voting Age Population by Race

Summary Highlights

1. This plan for D1, D5, D6, and D7 has a max deviation of <6%.
2. Gives Park Village back to D5. Keeps Torrey Highlands in D5. **Keeps PUSD whole within D5.**
3. Uses very distinct natural and man-made boundaries for D5/6/1. (56 and the creek & canyon)
4. Although Carmel Valley is split, it is split by the very significant boundary of the 56.
5. Very compact
6. Keeps most Community Planning Groups whole.
7. Keeps Claremont whole. D7 southern boundary also uses a significant boundary (Mission Valley).
8. D1 is north coastal community whole with UCSD.

Rancho Penasquitos Whole in D5

- [p5982](#)
- [69243](#)



by Tim Dougherty