

Good day Redistricting Commissioners,

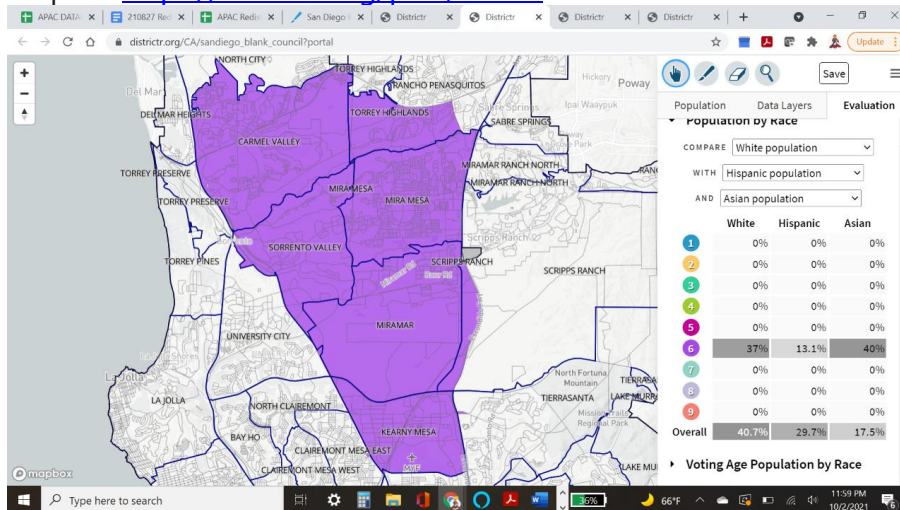
Please find the attached three preliminary maps from the Asian Pacific American Coalition (APAC) for your perusal and consideration.

These maps are the result of compiling input/feedback from our constituents and community members through 8-Redistricting Community Outreach Zoom Meetings and an online survey. These maps are still preliminary (drafts) as we are committed to the timeline we set forth; to work with our community members to finalize the maps through continued public meetings. Today, we want to provide you and the public with our preliminary maps, as APAC's way of contributing to these important discussions.

As mentioned previously, APAC is in favor of an Asian Empowerment District that is fair and equitable. We believe in the power of people's voice. We thank everyone who has participated in our outreach efforts and look forward to seeing a map that represents and celebrates our beautiful and diverse Asian culture.

Three map proposals with summary narratives for your review

Map 1 - <https://districtr.org/plan/57725>

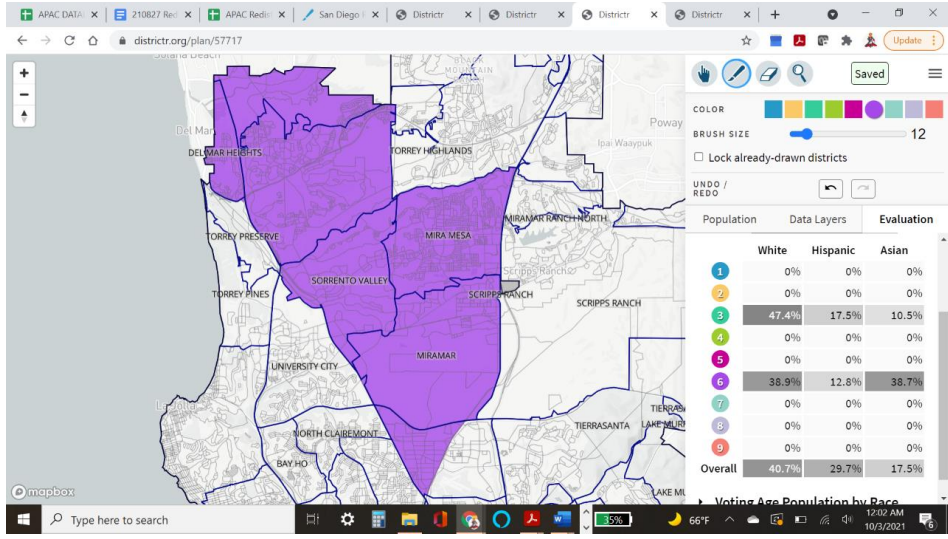


Neighborhoods include: Carmel Valley, Torrey Highlands, Mira Mesa, Sorrento Valley, Miramar, Kearny Mesa

Total Population - 154,132

API - 40%

Map 2 - <https://districtr.org/plan/57717>

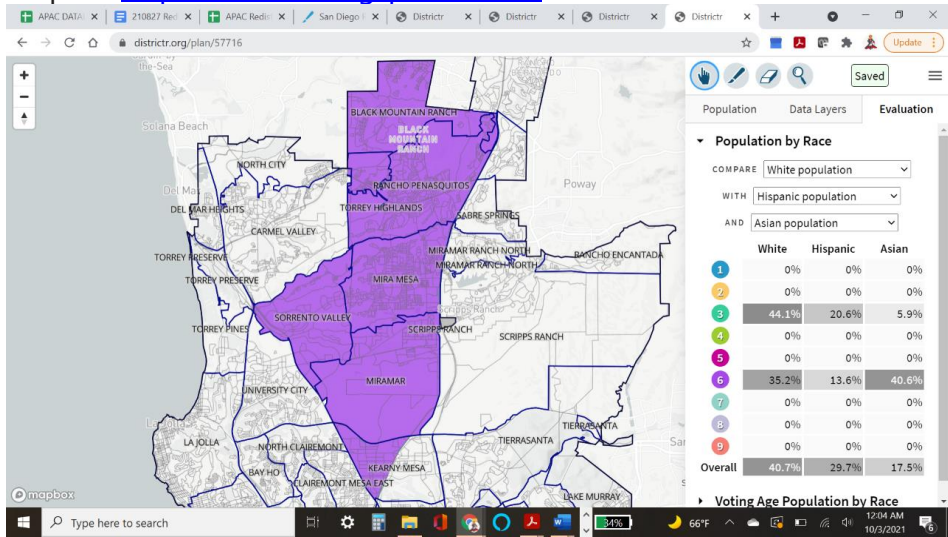


Neighborhoods include: Del Mar Heights, Carmel Valley, Sorrento Valley, Mira Mesa, Miramar, Partial Kearny Mesa

Total population - 154,746

API % - 38.7%

Map 3 - <https://districtr.org/plan/57716>



Neighborhoods include: Black Mountain Ranch, Rancho Penasuitas, Torrey Highlands, Mira Mesa, Sorrento Valley, Miramar, Partial Kearny Mesa

Total Population - 155,228

API% - 40.6%

Steve Hsieh
APAC Chair

Cynthia "CK" Suero-Gabler
APAC Vice Chair and Redistricting Sub-Committee Chair

APAC - Asian Pacific American Coalition
www.apacsd.org