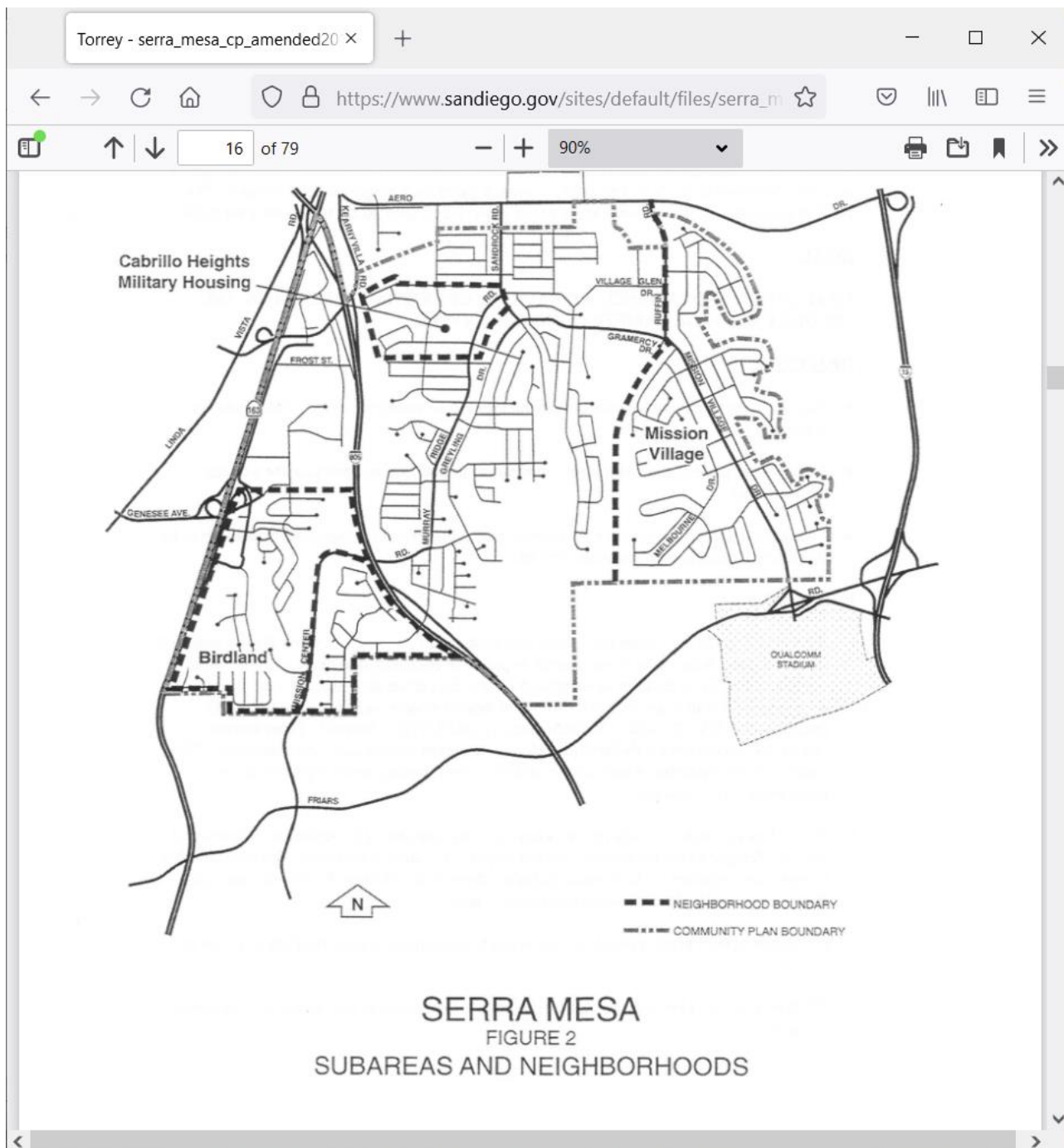


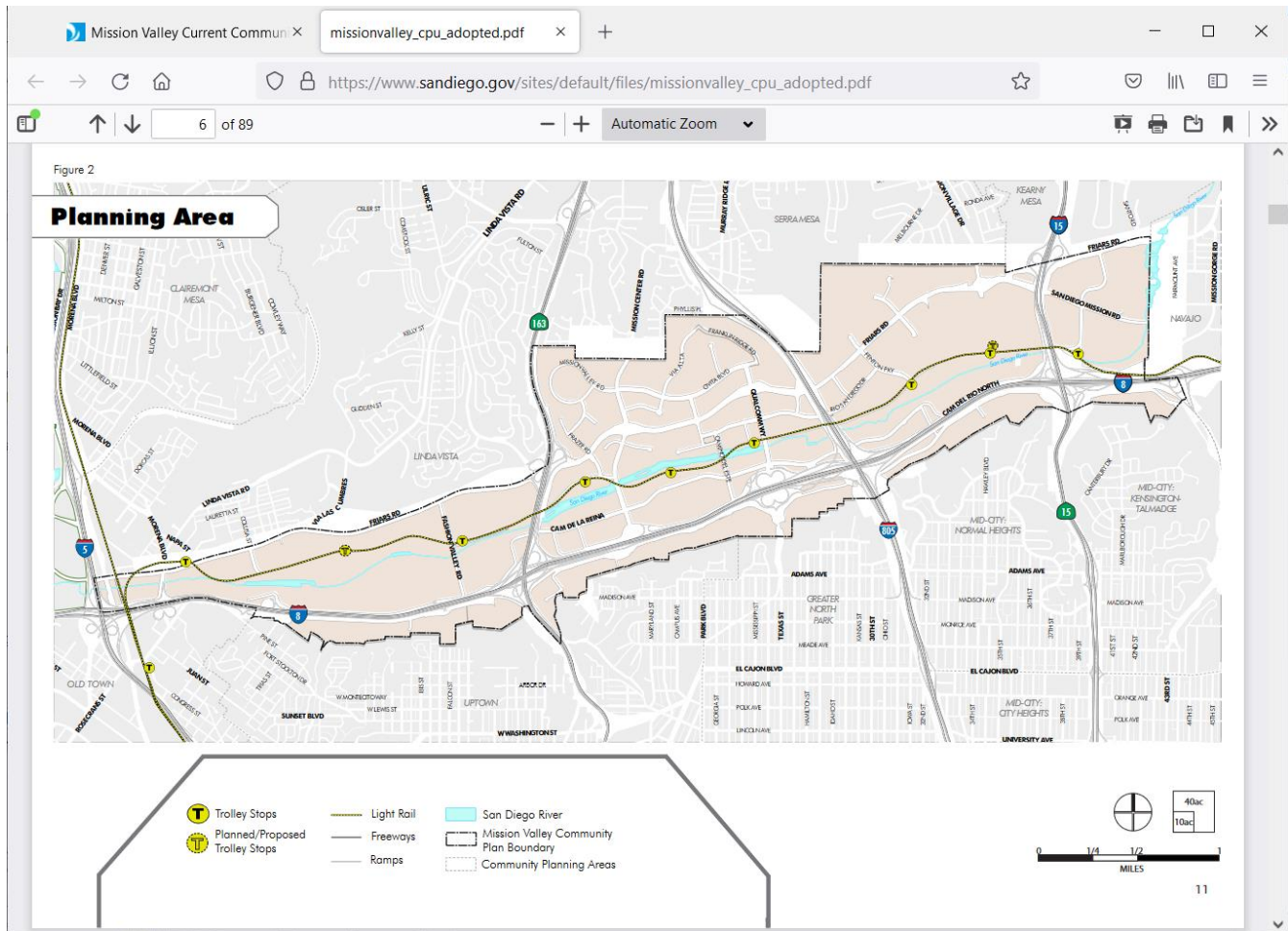
Redistricting Commission,

**The Cleanup Map #83035 didn't adjust the boundary between Serra Mesa and Mission Valley.** Twenty Birdland streets are still included in the Mission Valley planning area. The streets which have incorrectly been identified as part of Mission Valley are Cardinal Road, Cardinal Drive, Cardinal Lane, Teal Place, Mockingbird Drive, Pheasant Drive, Peacock Drive, Sprig Place, Kiwi Street, Finch Lane, Bobolink Way, Seagull Court, Seagull Lane, Teebird Lane, Goshawk Street, Hornbill Avenue, Whinchat Street, Talon Way, Macaw Way, and Redbird Drive. Also, Sevan Court (location of Hye Park) is part of Serra Mesa.

### Documentation from Community Plan

Serra Mesa Planning area ([https://www.sandiego.gov/sites/default/files/serra\\_mesa\\_cp\\_amended2017.pdf](https://www.sandiego.gov/sites/default/files/serra_mesa_cp_amended2017.pdf), p. 16):





Please ask your consultant to correct the boundary between Serra Mesa and Mission Valley.

Cindy Moore  
Vice-President, Serra Mesa Community Council