

Dear Commissioners,

My name is Nahid Shahjafari. I've been a resident of Carmel Valley for the past 10 years and recently moved to the Torrey Hills neighborhood. Thank you for the approval on moving Torrey Hills back into District 1. However, for unclear reasons a small area of Torrey Hills (606 residents) are still excluded from District 1.

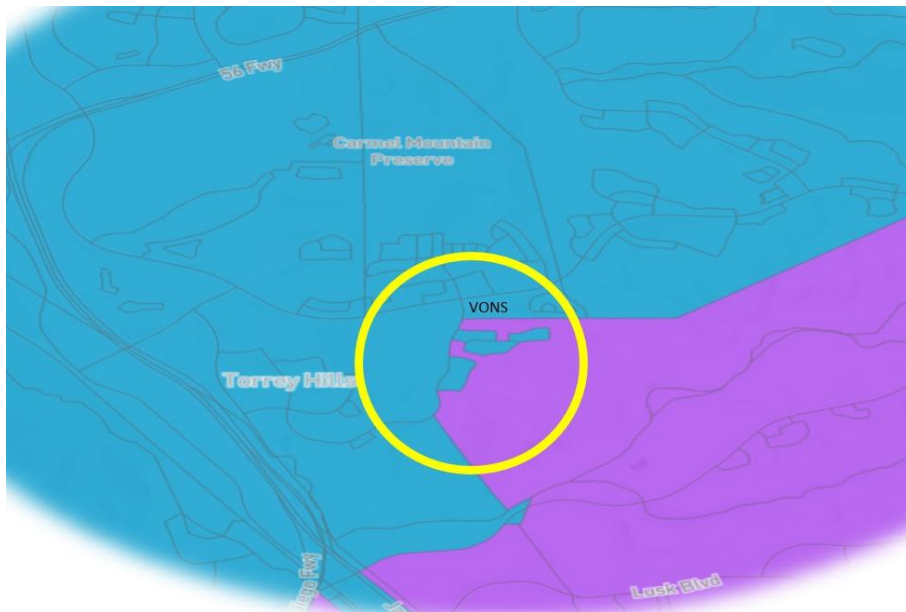
As a resident of the Torrey Hills, I would like to request correction to the boundaries for the 606 Torrey Hills residents on the top of the hill in East Ocean Air and include them back to District 1. This unjustified proposed change has serious consequences for the affected residents. We knowingly have chosen Carmel Valley to live in considering Del Mar Union School District for our kids. We in Torrey Hills are one community and one zip code and always have been part of Carmel Valley.

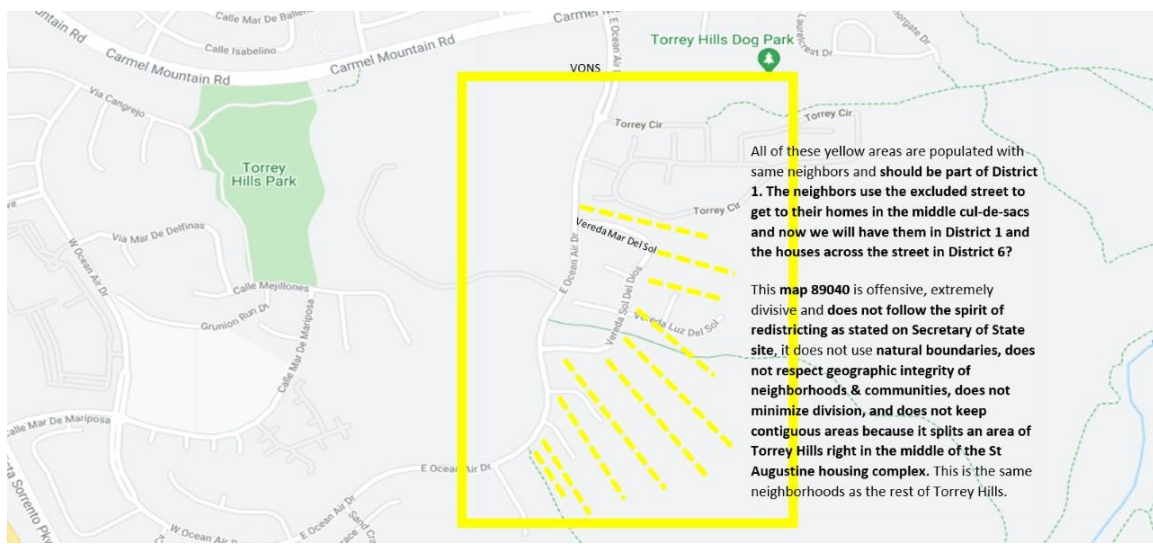
We found it absolutely appalling and discriminatory to see that such an oversight and incorrect boundary mapping was done. The proposed map/change below does not meet the intent of a redistricting exercise as stated on the California Secretary of State website. This map as it stands does not meet the standards of not aleatory dividing and cutting through close housing developments and neighborhoods; it does not keep contiguous districts; it does not keep or respect the geographic integrity of local neighborhoods or communities in a manner that minimizes its division; it does not respect the geographic integrity to minimize division; and it definitely does not use an easily identifiable boundary that follow natural and/or artificial barriers (rivers, canyons, etc.) via its two horseshoe cuttings that clunks us with the canyon and does not consider that there are housing and 606 residents that are being divided as such.

I greatly appreciate considering voting on performing a friendly revision on Map 87040 that would bring the entirety of Torrey Hills residents back to district 1.

Regards,

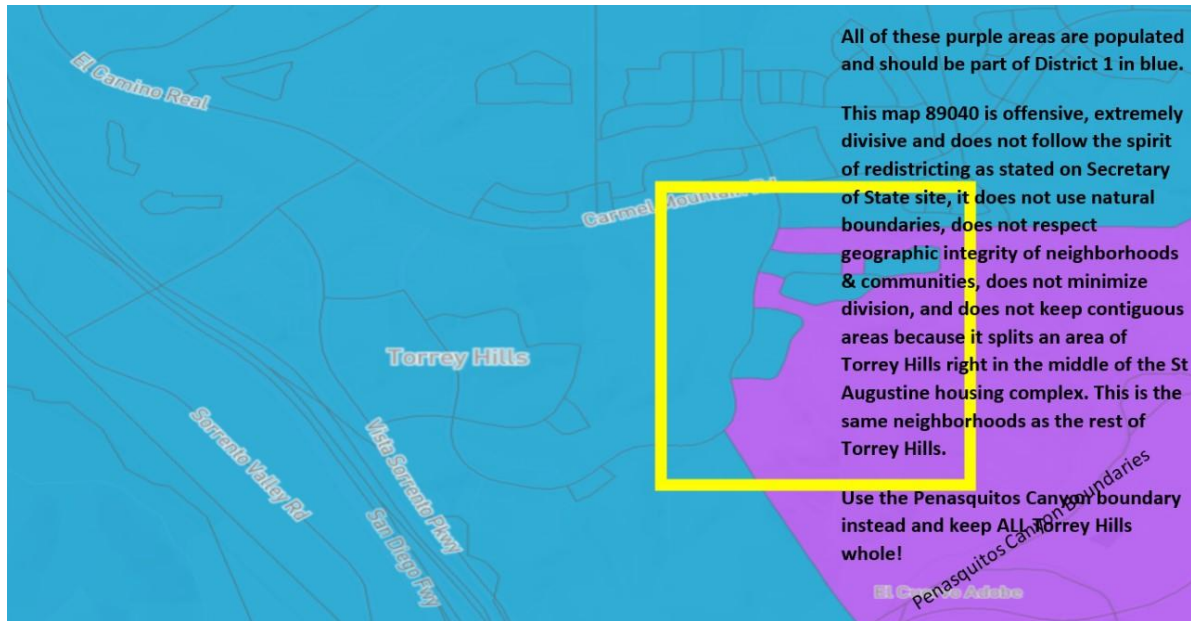
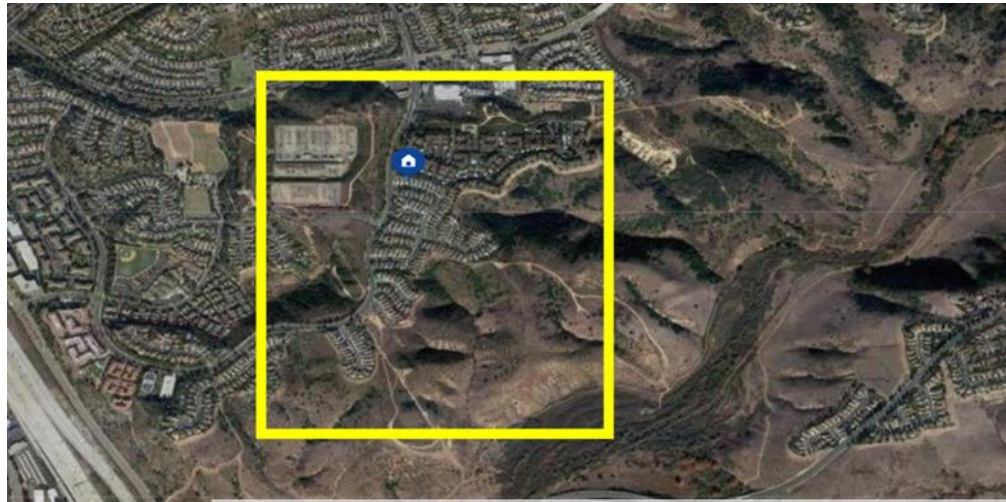
Nahid Shahjafari





All of these yellow areas are populated with same neighbors and should be part of District 1. The neighbors use the excluded street to get to their homes in the middle cul-de-sacs and now we will have them in District 1 and the houses across the street in District 6?

This map 89040 is offensive, extremely divisive and does not follow the spirit of redistricting as stated on Secretary of State site, it does not use natural boundaries, does not respect geographic integrity of neighborhoods & communities, does not minimize division, and does not keep contiguous areas because it splits an area of Torrey Hills right in the middle of the St Augustine housing complex. This is the same neighborhoods as the rest of Torrey Hills.



All of these purple areas are populated and should be part of District 1 in blue.

This map 89040 is offensive, extremely divisive and does not follow the spirit of redistricting as stated on Secretary of State site, it does not use natural boundaries, does not respect geographic integrity of neighborhoods & communities, does not minimize division, and does not keep contiguous areas because it splits an area of Torrey Hills right in the middle of the St Augustine housing complex. This is the same neighborhoods as the rest of Torrey Hills.

Use the Penasquitos Canyon boundary instead and keep ALL Torrey Hills whole!