

December 9, 2021

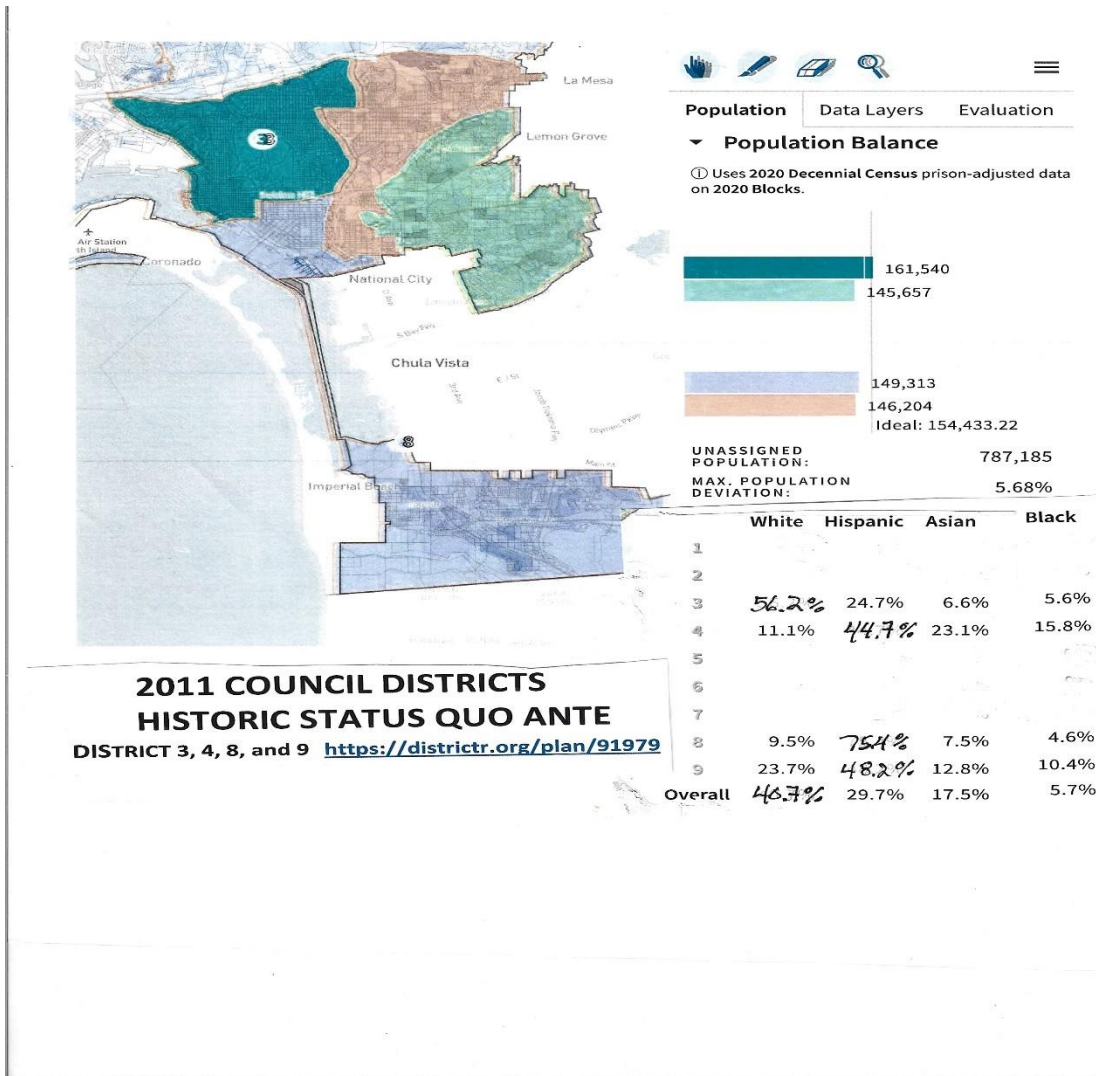
## TESTIMONY FOR MEETING OF DECEMBER 9, 2021

- DO NO HARM
- REQUEST CONSULTANT TO PROVIDE MAP THAT KEEPS HISTORIC LEVELS

### 2011 COUNCIL DISTRICTS HISTORIC STATUS QUO ANTE

DISTRICT 3, 4, 8, and 9

<https://districtr.org/plan/91979>



DISTRICT	POPULATION	NEED FOR IDEAL	WHITE	HISPANIC	BLACK	ASIAN
3	161,540	over 7,106.78	56.2%	24.7%	5.6%	6.6%
4	145,657	under 8,776.22	11.1%	44.7%	15.8%	23.1%
8	149,313	under 5,120.22	9.5%	75.4%	4.6%	7.5%
9	146,204	under 8,229.22	23.7%	48.2%	10.4%	12.8%

- DO NO HARM
- REQUEST CONSULTANT TO PROVIDE MAP THAT KEEPS HISTORIC LEVELS



**DO NO HARM MAP <https://districtr.org/plan/92000>**

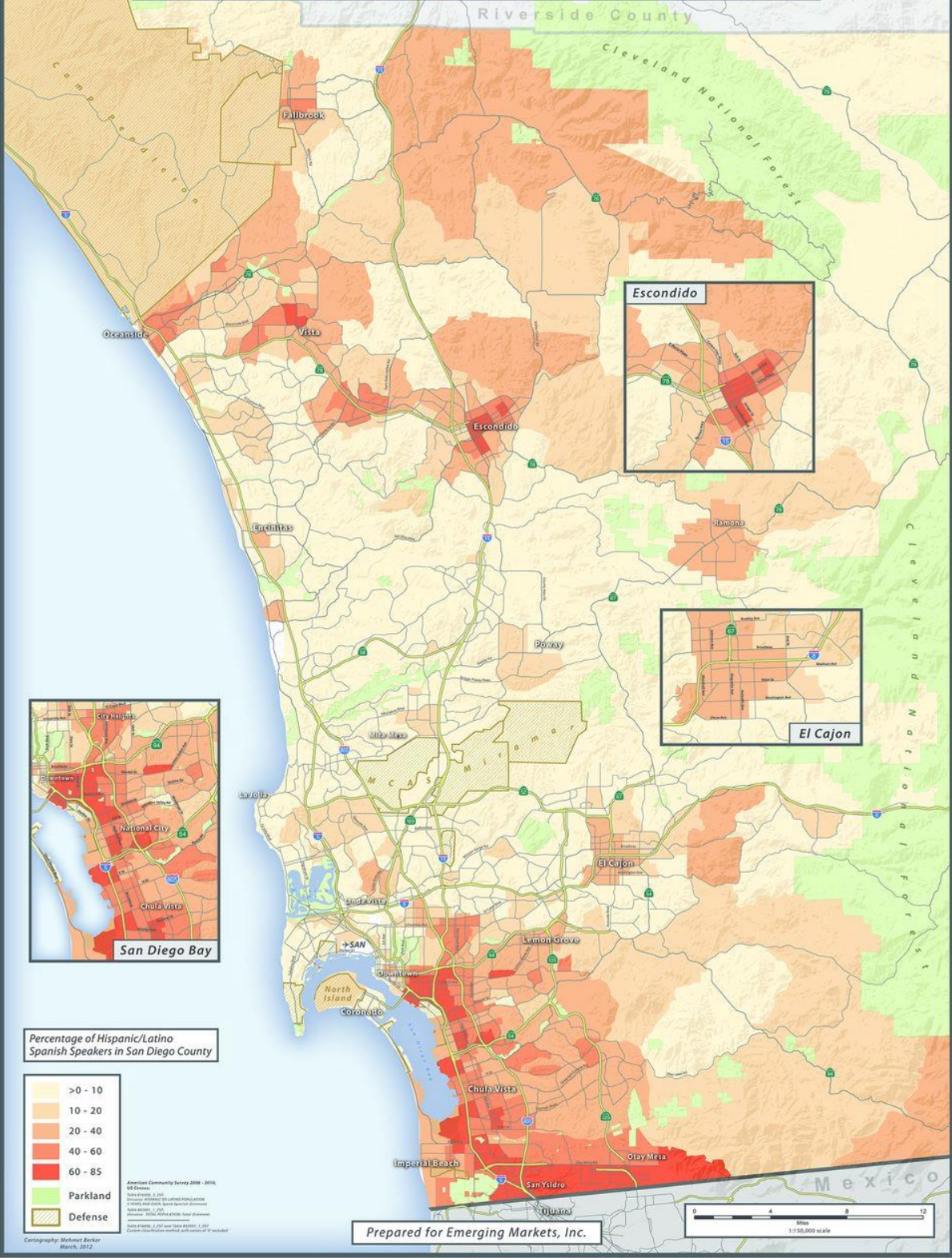
**I have submitted a map that keeps the Commissions work to date, North of the I-8 Freeway , in districts 1, 5, and 6 , and makes changes in Districts 2, 3, 4, 7, 8 and 9 which removes the gerrymandering additions to District 9; illustrated above. There are options to gerrymandering into a complete new geographical area and crossing very large infrastructure features between Friars Road and Camino Del Rio South.**

**The submitted map <https://districtr.org/plan/92000> balances the traditional voting areas within a few hundred residents of the ideal**

**Further I request that the Commission consider the languages spoken in these historic majority minority communities**

**This map of Spanish Speaking areas, in the City of San Diego, clearly shows that the current 2011 District Nine is historically a language minority area. Diluting District Nine by adding the completely new territory , in the San Diego River Mission valley will dilute the protected voting rights of this community .**

# Spanish-speaking Communities of San Diego



Percentage of Hispanic/Latino Spanish Speakers in San Diego County

	>0 - 10
	10 - 20
	20 - 40
	40 - 60
	60 - 85
	Parkland
	Defense

American Community Survey 2006 - 2010, US Census. Data provided by Latino Policy Action Fund and San Diego Regional Council. Data source: 2010 Census, American Community Survey, 2006-2010. Data provided by Latino Policy Action Fund and San Diego Regional Council. Data source: 2010 Census, American Community Survey, 2006-2010. Data provided by Latino Policy Action Fund and San Diego Regional Council. Data source: 2010 Census, American Community Survey, 2006-2010.

Prepared for Emerging Markets, Inc.



Cartography: Michael Becker  
March, 2012