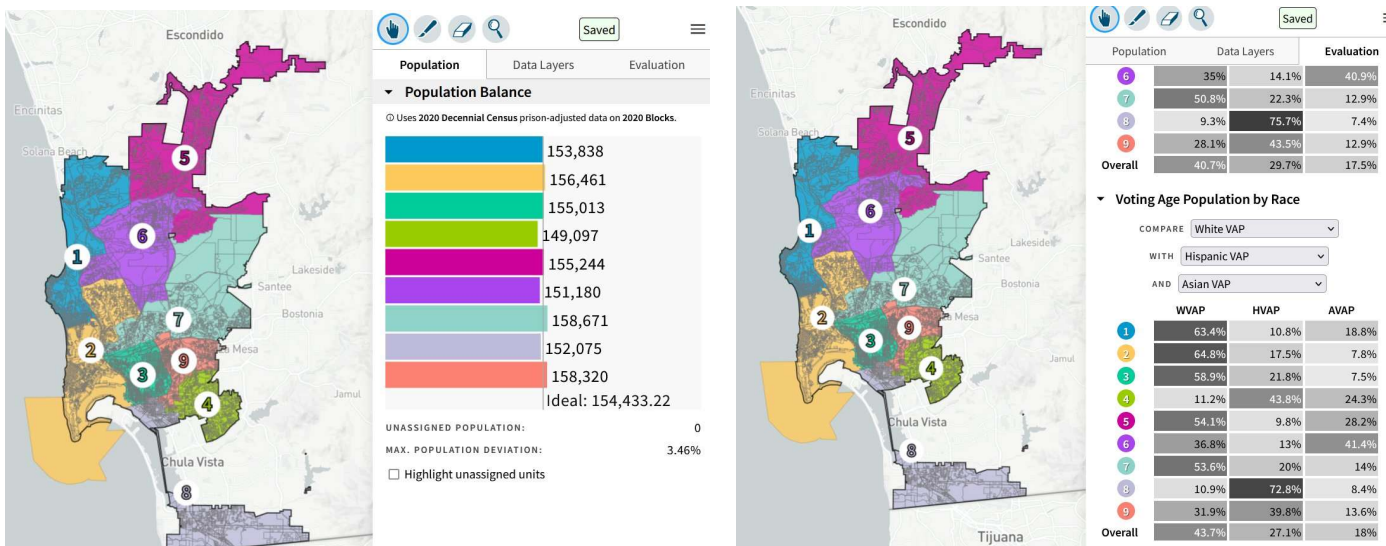


Honorable Commissioner Hoy,

I appreciate the way in which you have participated in the redistricting process and advocated for District 1, the district you were chosen to represent on the Redistricting Commission. Thank you for your volunteer service in this process. As a resident of District 1, I appreciate the time you have spent on this effort and the courtesy and respect you have shown the public.

I have played with the mapping tool for countless hours and have some suggested minor changes for your consideration. I offer these as a private individual without any affiliation to any group. By following the small steps detailed in this letter, an end result is achieved which balances populations and satisfies the Redistricting Commission criteria while also dealing fairly with the wishes of most community people commenting at the special meetings. It should be noted that these changes started with the Commission's Map 91107 (<https://districtr.org/plan/91107>) approved at the December 7, 2021 Special Redistricting Commission Meeting.

Making these minor changes results in a **map with a D6 AVAP of 41.4 % vs. 40.7%, a D6 Asian population of 40.9% vs. 40.1% and a total deviation of 6.20% vs. 6.30%**. This map is shown below and can be found at <https://districtr.org/plan/91467>. The total deviation is controlled by the overpopulation of D7 and D9 and the under population of D4. The total deviation for Districts 1, 2, 3, 5, 6 and 8 is 3.42%.



The discussion of the Commission at the December 1, 2021 meeting concerned improving the population balance between D5 and D6 and raising the population of D2 to minimize the total deviation of the Commission's Map.

The minor changes are given as Steps 1, 2, and 3. Step 1 proposes a way to improve the population balance of D5 and D6 while increasing D6's AVAP percentage. When coupled with Steps 2 and 3, the minor changes increase D2's population and provide a slightly better total deviation and higher D6 AVAP.

All of these steps do not change Map 91107 in Districts 4, 8 or 9. Steps 1, 2, and 3 are shown in the following pages.

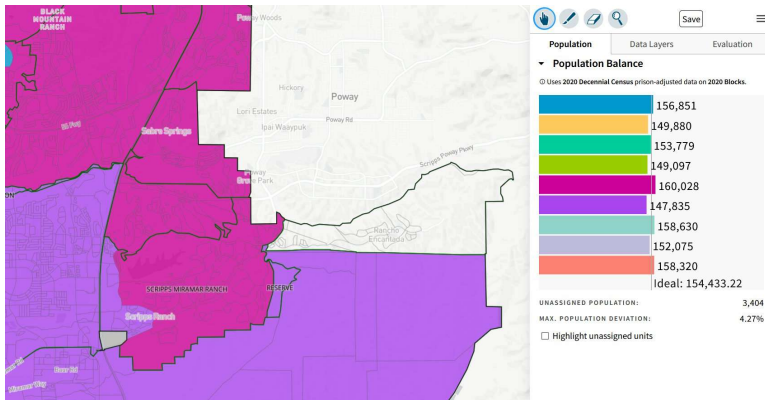
Best Regards,

Sherri S. Lightner

cc: Chair Hebrank and Commissioners

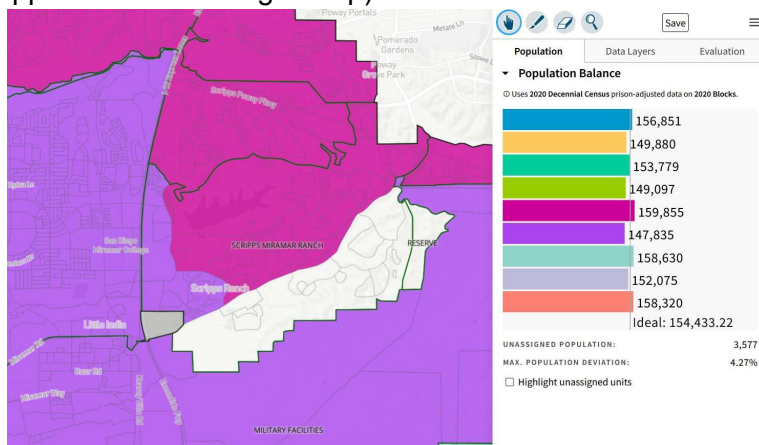
STEP 1: Adjust the Scripps Ranch/Miramar Ranch/Rancho Encantada area to reduce the D5 population and total deviation:

STEP 1A: Move Rancho Encantada (part of the Scripps Ranch Planning Group and in the Poway Unified School District) into D5.



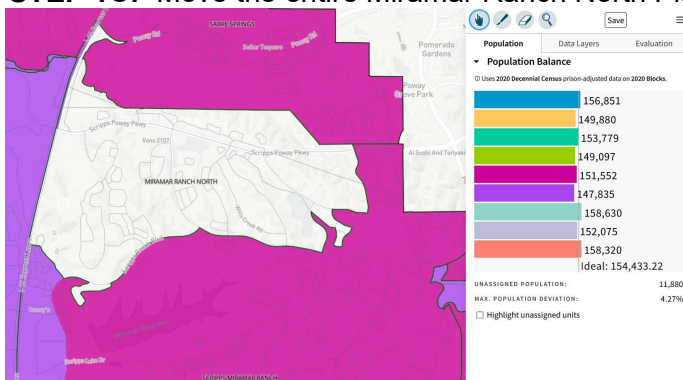
Putting this blank area in D5 results in map <https://districtr.org/plan/91415>.

STEP 1B: Move Scripps Ranch planning area south of Pomerado (thereby uniting most of the Scripps Ranch Planning Group) into D5



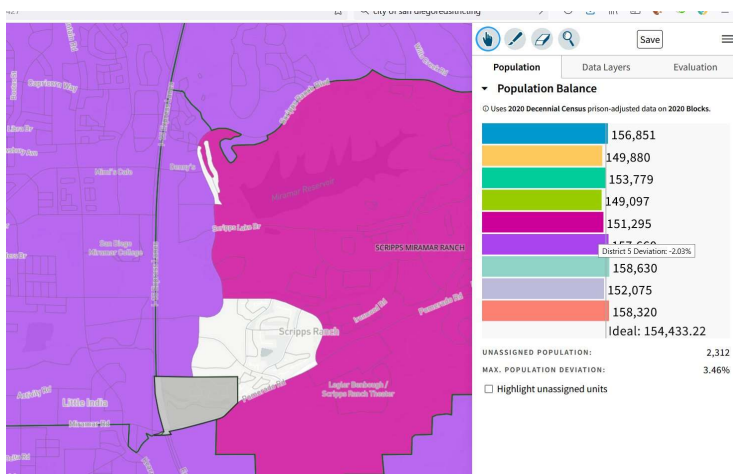
Putting this area in D5 results in map <https://districtr.org/plan/91420>

STEP 1C: Move the entire Miramar Ranch North Planning Group into D6



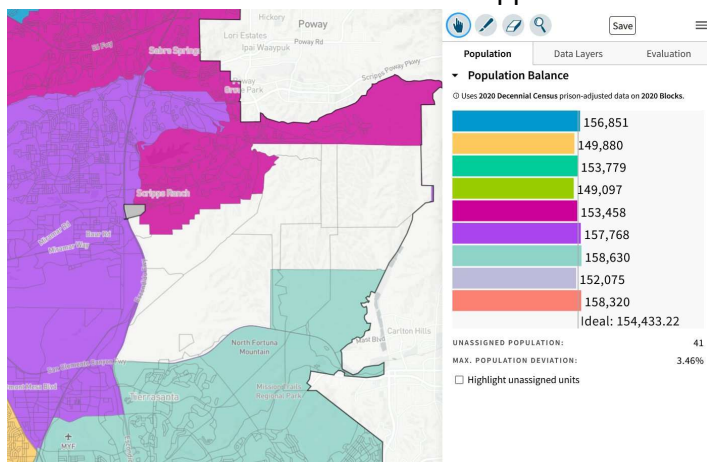
Putting this area in D6 results in map <https://districtr.org/plan/91427>.

STEP 1D: Change the small strip of Scripps Ranch planning area along I-15 to keep some of the area in D6, move some of the area back into D5 and move a small portion from D5 into D6.



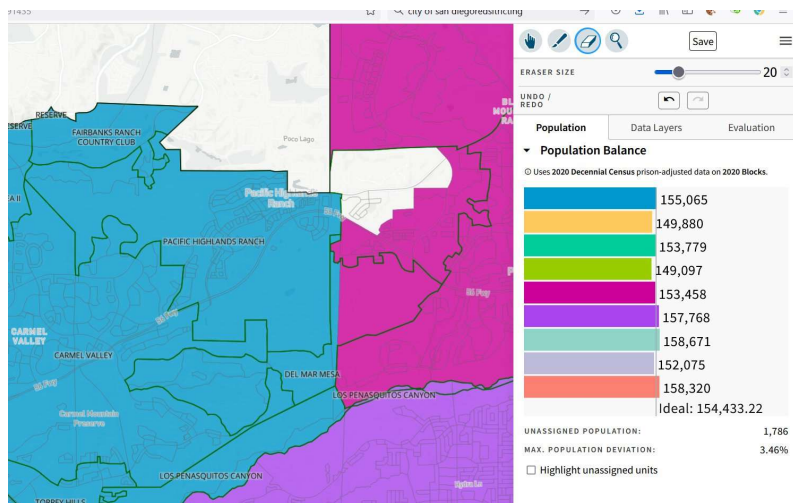
Putting the upper blank area in D6 and the lower blank area in D5 results in map <https://districtr.org/plan/91433>.

STEP 1E: Move D6 area south of Scripps Ranch back to D7



Returning this area to D7 adds 41 to D7's population and results in map <https://districtr.org/plan/91435>.

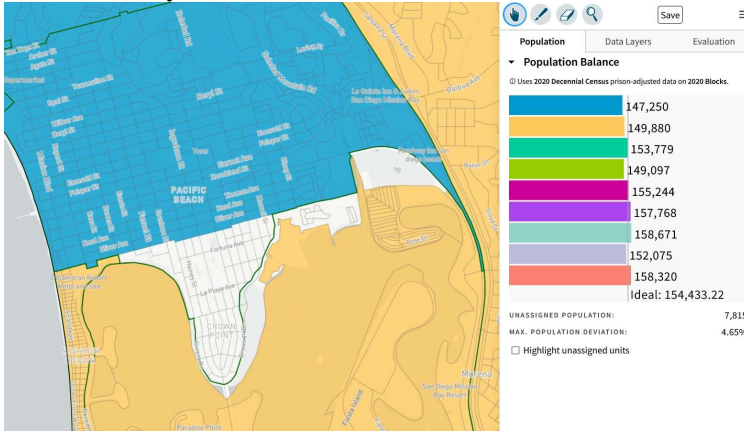
STEP 1F: Move D1 area of Torrey Highlands back into D5.



Returning this area adds 1,786 to D5 and results in map <https://districtr.org/plan/91446>.

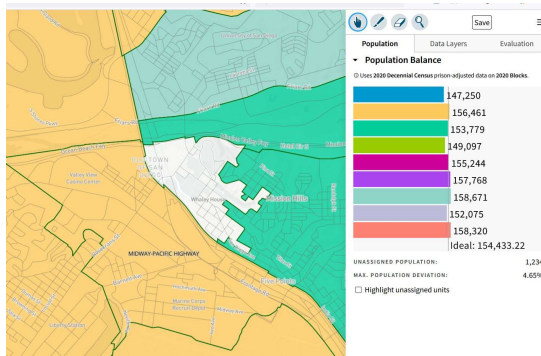
STEP 2: Increase the population of D2 to reduce the total deviation. This is done in two moves because changes made by Map 91107 need to be undone.

- **STEP 2A** The area south of Pacific Beach Drive was moved from D1 to D2. This particular cut was chosen to minimize the impact to the business district, the locations for proposed parking meters, the SANDAG Pacific Beach Corridor Study (2017) area along Grand Avenue, and the six SDUSD schools in the Mission Bay Cluster. The only Mission Bay Cluster school not included in the D1 area is the Crown Point Junior Music Academy which is a Magnet School. The neighborhood of Crown Point is moved into D2 along with Mission Beach and all of Mission Bay and its coastline.



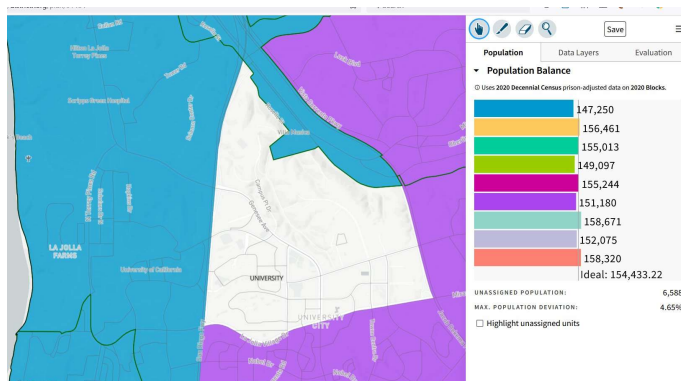
Putting this area in D2 results in adding 7,815 to D2's population and is shown in map <https://districtr.org/plan/91461>.

- **STEP 2B** Decrease D2 population by moving Old Town from D2 back into D3.



Putting this area back in D3, lowers the population in D2 and results in adding 1,234 to D3's population and is shown in map <https://districtr.org/plan/91464>.

STEP 3: Increase D1 population by adding North University City (north of La Jolla Village Drive) to D1. This also decreases the D6 population. This action would unite UCSD in D1 and put all of zip code 92037 in D1.



Putting this area in D1 results in Map <https://districtr.org/plan/91467>.