



THE CITY OF SAN DIEGO



ANNUAL REPORT for Fiscal Year 2018

CORONADO VIEW MAINTENANCE ASSESSMENT DISTRICT

under the provisions of the

**San Diego Maintenance Assessment District Procedural Ordinance
of the San Diego Municipal Code**

**Prepared For
City of San Diego, California**



**Prepared By
EFS Engineering, Inc.
P.O. Box 22370
San Diego, CA 92192-2370
(858) 752-3490**

June 2017

CITY OF SAN DIEGO

Mayor

Kevin Faulconer

City Council Members

Barbara Bry District 1	Mark Kersey District 5 (Council President Pro Tem)
Lorie Zapf District 2	Chris Cate District 6
Chris Ward District 3	Scott Sherman District 7
Myrtle Cole District 4 (Council President)	David Alvarez District 8
Georgette Gómez District 9	

City Attorney

Mara W. Elliott

Chief Operating Officer

Scott Chadwick

City Clerk

Elizabeth Maland

Independent Budget Analyst

Andrea Tevlin

City Engineer

James Nagelvoort

Table of Contents

Annual Report for Fiscal Year 2018
Coronado View Maintenance Assessment District

Preamble.....	1
Executive Summary	2
Background	3
District Boundary	3
Project Description.....	4
Separation of General and Special Benefits.....	4
Cost Estimate.....	4
Annual Cost-Indexing	5
Method of Apportionment.....	5
Estimated Benefit of Improvements.....	5
Apportionment Methodology	5
Sample Calculations	6
Summary Results.....	7

EXHIBITS

Exhibit A: District Boundary

Exhibit B: Estimated Budget – Revenue & Expense Statement
for Fiscal Year 2018

Exhibit C: Preliminary Assessment Roll for Fiscal Year 2018

Annual Report for Fiscal Year 2018

Coronado View

Maintenance Assessment District

Preamble

Pursuant to §65.0220 of the “San Diego Maintenance Assessment District Procedural Ordinance” (being Division 2, Article 5, Chapter 6 of the *San Diego Municipal Code*) and City of San Diego Council Resolution No. R-310618 passed on July 22, 2016, authorizing the continued levy of assessments for the life of the CORONADO VIEW MAINTENANCE ASSESSMENT DISTRICT (hereinafter referred to as “District”), and in accordance with applicable provisions of “Proposition 218” (being Article XIID of the California Constitution), and provisions of the “Proposition 218 Omnibus Implementation Act” (being California Senate Bill 919) (the aforementioned provisions are hereinafter referred to collectively as “applicable law”), and in accordance with Resolution No. _____, adopted by the CITY COUNCIL OF THE CITY OF SAN DIEGO, COUNTY OF SAN DIEGO, STATE OF CALIFORNIA, and in connection with the annual proceedings for the District, EFS Engineering, Inc., as Assessment Engineer to the City of San Diego, submits herewith this annual report for the District as required by §65.0220 of the “San Diego Maintenance Assessment District Procedural Ordinance.”

DATE OF FINAL PASSAGE BY THE CITY OF SAN DIEGO,
COUNTY OF SAN DIEGO, STATE OF CALIFORNIA, ON THE
_____ DAY OF _____, 2017.

Elizabeth Maland, CITY CLERK
CITY OF SAN DIEGO
STATE OF CALIFORNIA

Executive Summary

Project: Coronado View
Maintenance Assessment District

Apportionment Method: Equivalent Benefit Unit (EBU)

	FY 2017	FY 2018 ⁽¹⁾	Maximum ⁽²⁾ Authorized
Total Parcels Assessed:	116	116	--
Total Estimated Assessment:	\$24,859	\$24,859	--
Total Number of EBUs:	116.00	116.00	--
Assessment per EBU:	\$214.30	\$214.30	\$223.86 ⁽³⁾

⁽¹⁾ FY 2018 is the City's Fiscal Year 2018, which begins July 1, 2017 and ends June 30, 2018. Total Parcels Assessed, Total Estimated Assessment, and assessment apportionment factors may vary from prior fiscal year values due to parcel changes and/or land use re-classifications.

⁽²⁾ Maximum authorized assessment rate subject to cost-indexing as approved by property owners at the time of District formation.

⁽³⁾ Prior fiscal year's maximum authorized annual assessment rate increased by cost-indexing factor of 1.96%.

Annual Cost-Indexing: The maximum authorized assessment rates are cost-indexed and will increase (or decrease) annually based on the annual change in the *San Diego Consumer Price Index for Urban Consumers* (SDCPI-U).

Background

The Coronado View Maintenance Assessment District (District), originally known as the “Coronado View Landscape and Lighting Maintenance District,” was established by the City of San Diego (City) on July 26, 1983 by City Council Resolution R-258954. The District was subsequently re-formed on November 4, 1997 by City Council Resolution R-289386 primarily for purposes of compliance with Proposition 218 and to permit future cost-indexing. The purpose of the District was, and still is, to fund specifically identified improvements and activities within the boundary of the District.

In conformity with §65.0221 of the “San Diego Maintenance Assessment District Procedural Ordinance,” the City adopted Resolution No. R-310618 on July 22, 2016, approving the annual budget and assessments for Fiscal Year 2017, and authorizing the levy of the assessments for the life of the District, consistent with the benefit findings and assessment apportionment method contained in the approved formational and all subsequently updated Engineer’s Reports (Engineer’s Reports). The Engineer’s Reports are on file with the City Clerk, and incorporated herein by reference.

The District is authorized and administered under the provisions of the “San Diego Maintenance Assessment District Procedural Ordinance.” This annual report has been prepared pursuant to the requirements of §65.0220 of the “San Diego Maintenance Assessment District Procedural Ordinance.”

District Boundary

The District boundary is generally depicted in **Exhibit A**. The District Boundary Map and Assessment Diagram are on file in the Maintenance Assessment Districts section of the Park and Recreation Department of the City, and, by reference, are made a part of this annual report.

Project Description

The authorized assessments will be used to fund specifically identified improvements and activities within the District. The District improvements and activities generally consist of maintenance and servicing of the landscaped slope areas adjacent to the rights-of-way along 60th Street (from Federal Boulevard to Tooley Street) and maintenance of street gutters in the District. The approximate location of the improvements is generally shown on **Exhibit A**.

For additional detail as to the location, type of improvements, and activities performed by the District, please refer to the maps, improvement plans, engineering drawings, maintenance specifications, the Engineer's Reports and other associated documents on file with the Maintenance Assessment Districts section of the Park and Recreation Department of the City. These documents, collectively, are incorporated herein by reference and made part of this annual report.

Separation of General and Special Benefits

The identified improvements and activities provide benefits to the parcels located within the District. These benefits are "special benefits" to the extent that they are above and beyond the City's standard level of service, and exclusive of those "general benefits" provided to the public at large or properties located outside the District. By law, only "special benefits" are assessable.

The assessments presented in this annual report are based on the cost of improvements and activities determined to provide "special benefits" in accordance with the Engineer's Reports. For additional detail relative to the separation and quantification of general and special benefits for the District, please refer to the Engineer's Reports, on file with the Maintenance Assessment Districts section of the Park and Recreation Department of the City.

Cost Estimate

The estimated annual budget (Revenue & Expense Statement) for Fiscal Year 2018 (July 1, 2017 to June 30, 2018 period) is included as **Exhibit B**. The "Other Contributions (Non Assessment Source)" revenue contained in the budget includes the value of improvements and activities determined to provide "general benefits." The District budget with full detail is available for public reference in the Maintenance Assessment Districts section of the Park and Recreation Department of the City.

Annual Cost-Indexing

The maximum authorized assessment set forth in the Engineer's Reports is permitted to increase annually based on the published change in the "San Diego Consumer Price Index for Urban Consumers" (SDCPI-U). The annual change in second half SDCPI-U values, as compiled by the *U.S. Bureau of Labor Statistics* (see www.bls.gov), for the prior year period was from 271.526 to 276.837 (a 1.96% increase). In accordance with the approved cost-indexing provisions, the maximum authorized assessment rates have been increased by 1.96%.

Method of Apportionment

Estimated Benefit of Improvements

All benefits assessed to the District are special to this District and are distinct from other parcels as to the level of services received from the City.

Creation of the open space, which is maintained by this District, was required in order to allow the community to be developed in its current location, within the slopes and topography of the area. The maintenance of this open space parcel, including cleaning of the adjacent street gutter, benefits the District by maintaining its functionality, improving the aesthetics of the community, controlling erosion, and preventing degradation of the community which would result if the open space parcel and gutters were neglected.

Apportionment Methodology

The total cost associated with District improvement and activities will be assessed to the various parcels in proportion to the estimated Equivalent Benefit Units (EBUs) assigned a parcel in relationship to the total EBUs of all the parcels in the District. All the parcels (single-family homes) are estimated to benefit equally and are all assigned an EBU of one (1).

Sample Calculations

As described above, the number of Equivalent Benefit Units (EBUs) assigned to each parcel in the District has been assigned based on land use. As all of the parcels benefit equally, each has been assigned one (1) EBU.

- **1 Single-Family Residence**

EBUs = 1 EBU per parcel

The total assessment for each parcel in the District is based on the calculated EBUs for the parcel and the applicable unit assessment rate, as shown in the following equation:

$\text{Total Assessment} = \text{Total EBUs} \times \text{Unit Assessment Rate}$
--

Based on the above formula, the EBUs calculated for each property, can be found in the Assessment Roll (**Exhibit C**).

Summary Results

The District Boundary is presented in **Exhibit A**.

An estimate of the annual costs of the improvements and activities provided by the District is included as **Exhibit B**.

The assessment methodology utilized is as described in the text of this annual report. Based on this methodology, Fiscal Year 2018 District assessment for each parcel were calculated and are shown in the Preliminary Assessment Roll (**Exhibit C**).

Each lot or parcel of land within the District has been identified by unique County Assessor's Parcel Number in the Preliminary Assessment Roll and on the Boundary Map and Assessment Diagram referenced herein.

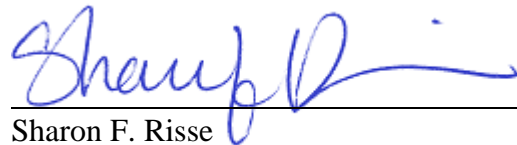
This annual report has been prepared and respectfully submitted by:

EFS ENGINEERING, INC.



Eugene F. Shank, PE

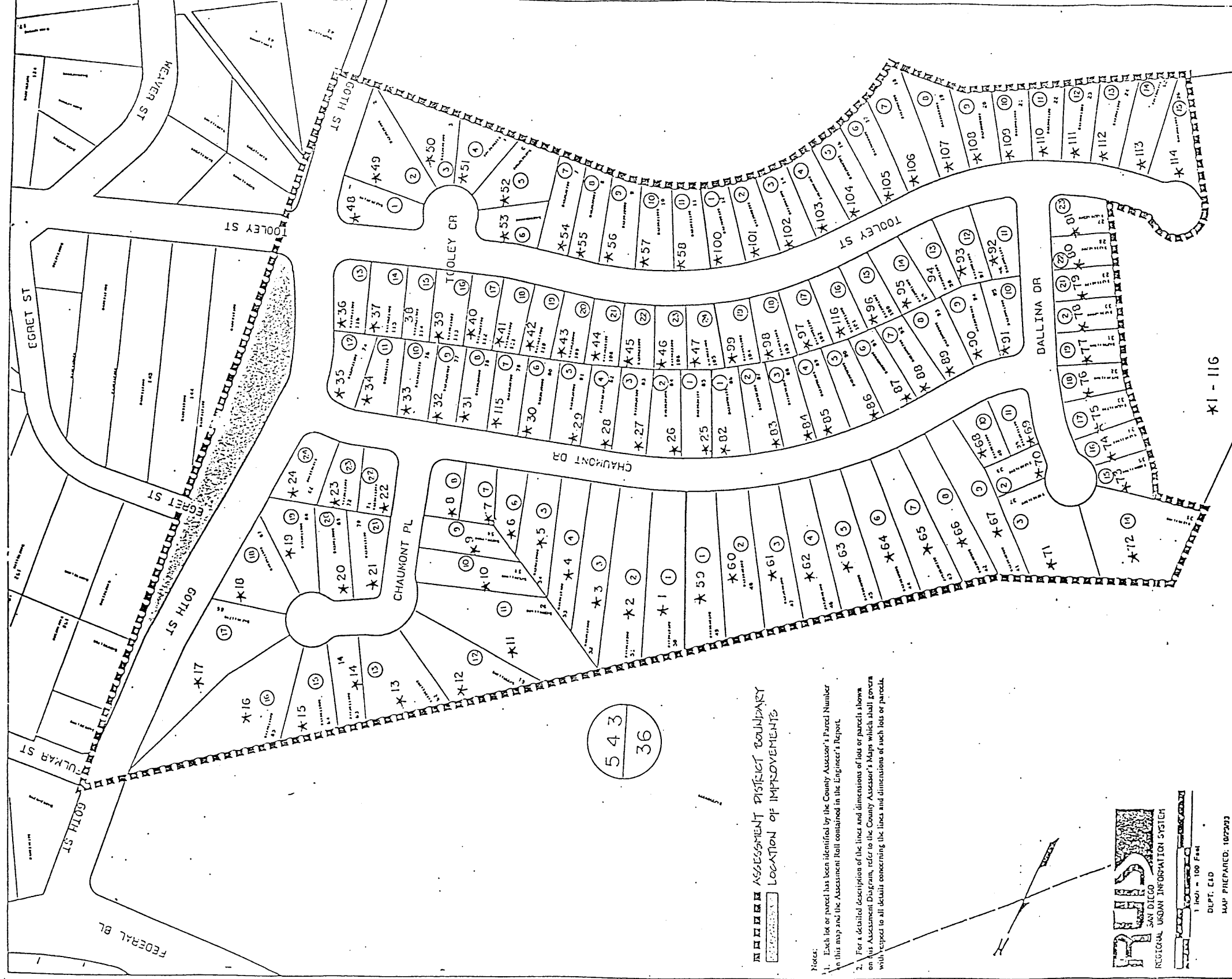
C 52792



Sharon F. Risse

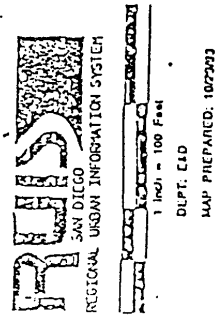
EXHIBIT A

District Boundary



ASSESSMENT DISTRICT BOUNDARY
 LOCATION OF IMPROVEMENTS

- Notes:
1. Each lot or parcel has been identified by the County Assessor's Parcel Number in this map and the Assessment Roll contained in the Engineer's Report.
 2. For a detailed description of the lines and dimensions of lots or parcels shown on the Assessment Diagram, refer to the County Assessor's Maps which shall govern with respect to all details concerning the lines and dimensions of such lots or parcels.



CITY OF SAN DIEGO	
W.O. NO. 133213	DATE. 10/93
CORONADO VIEW	
Landscape District	Maintenance District

CORONADO VIEW
Maintenance Assessment District

EXHIBIT B

**Estimated Budget – Revenue & Expense Statement
for Fiscal Year 2018**

EXHIBIT B

REVENUE AND EXPENSE STATEMENT

Coronado View Maintenance Assessment District Fund 200040

	FY 2016 ACTUALS	FY 2017 ESTIMATE	FY 2018 PROPOSED
BEGINNING FUND BALANCE			
Surplus (or Deficit) from Prior Year	\$ 26,769.15	\$ 38,311.05	\$ 29,045.00
TOTAL BEGINNING FUND BALANCE	\$ 26,769.15	\$ 38,311.05	\$ 29,045.00
REVENUE			
Assessment Revenue	\$ 24,637.65	\$ 24,859.00	\$ 24,858.80
Interest	\$ 258.69	\$ 75.00	\$ 50.00
Other Contributions (Non Assessment Source)	\$ 6,278.11	\$ 1,138.00	\$ 5,152.00
TOTAL REVENUE	\$ 31,174.45	\$ 26,072.00	\$ 30,060.80
TOTAL BEGINNING FUND BALANCE & REVENUE	\$ 57,943.60	\$ 64,383.05	\$ 59,105.80
OPERATING EXPENSE			
Landscaping Improvements and Activities ⁽¹⁾	\$ 11,978.55	\$ 22,412.00	\$ 17,689.00
Tree Services		\$ 2,000.00	\$ 2,000.00
Misc. Services ⁽²⁾		\$ 3,000.00	
Special Districts Administrative Cost	\$ 7,654.00	\$ 7,926.00	\$ 7,947.00
Other (Unallocated Reserve)			\$ 10,000.00
TOTAL OPERATING EXPENSE	\$ 19,632.55	\$ 35,338.00	\$ 37,636.00
TOTAL EXPENSE	\$ 19,632.55	\$ 35,338.00	\$ 37,636.00
TOTAL ENDING FUND BALANCE	\$ 38,311.05	\$ 29,045.05	\$ 21,469.80
NET ANNUAL REVENUE (OR EXPENSE)	\$ 11,541.90	\$ (9,266.00)	\$ (7,575.20)

⁽¹⁾ Includes related supplies and utility costs.

⁽²⁾ Includes plant pallet drawings for Parkway Project.

EXHIBIT C

**Preliminary Assessment Roll
for Fiscal Year 2018**

EXHIBIT C - Assessment Roll (Fiscal Year 2018)
Coronado View Maintenance Assessment District

Parcel Number	Total EBU ^s (1)	Unit Cost (\$/EBU)	FY 2018 (2) Assessment	Owner Name
543 361 01 00	1.00	\$214.30	\$214.30	Devera Christopher C
543 361 02 00	1.00	\$214.30	\$214.30	Huynh Vongsouvanh Trust 04-29-14
543 361 03 00	1.00	\$214.30	\$214.30	Salaam Family Trust 09-23-11
543 361 04 00	1.00	\$214.30	\$214.30	Hubert Gary M
543 361 05 00	1.00	\$214.30	\$214.30	Stoddard Joseph E&Karen C
543 361 06 00	1.00	\$214.30	\$214.30	Li-Song Family Living Trust 05-23-12
543 361 07 00	1.00	\$214.30	\$214.30	Villa Edmundo&Vera
543 361 08 00	1.00	\$214.30	\$214.30	Wesley Family Trust 05-11-04
543 361 09 00	1.00	\$214.30	\$214.30	Clay Jonett R
543 361 10 00	1.00	\$214.30	\$214.30	Chisley Javon D
543 361 11 00	1.00	\$214.30	\$214.30	Garner Nina
543 361 12 00	1.00	\$214.30	\$214.30	Lopez Anthony&Karina
543 361 13 00	1.00	\$214.30	\$214.30	Le Hieu Van
543 361 14 00	1.00	\$214.30	\$214.30	Hollie Robert E
543 361 15 00	1.00	\$214.30	\$214.30	Ratcliffe Monica D Trust 08-08-06
543 361 16 00	1.00	\$214.30	\$214.30	Kahassai Naizgi&Woldemichael Asli
543 361 17 00	1.00	\$214.30	\$214.30	Cooper James T Separate Property Trust 10-29-97
543 361 18 00	1.00	\$214.30	\$214.30	Jones Robert Earl&Lillian Etta
543 361 19 00	1.00	\$214.30	\$214.30	Groner Marvin E&Barbara J
543 361 20 00	1.00	\$214.30	\$214.30	Blake Barbara A B
543 361 21 00	1.00	\$214.30	\$214.30	Jackson Arthur Jr
543 361 22 00	1.00	\$214.30	\$214.30	Pruitt Kurt L&Greer C
543 361 23 00	1.00	\$214.30	\$214.30	Michel Rene&Teresa
543 361 24 00	1.00	\$214.30	\$214.30	Mcdonald Leon&Lynch-Mcdonald Kecia L
543 362 01 00	1.00	\$214.30	\$214.30	King Ancernetta
543 362 02 00	1.00	\$214.30	\$214.30	East Broadway Investment Group L L C
543 362 03 00	1.00	\$214.30	\$214.30	King Patricia A
543 362 04 00	1.00	\$214.30	\$214.30	Cooper Family Trust 08-07-93
543 362 05 00	1.00	\$214.30	\$214.30	Du Ny
543 362 06 00	1.00	\$214.30	\$214.30	Bingham Columbus Jr
543 362 07 00	1.00	\$214.30	\$214.30	Ramos Medizon G&Corazon V
543 362 08 00	1.00	\$214.30	\$214.30	Jordan Family Trust 08-24-07
543 362 09 00	1.00	\$214.30	\$214.30	Lang Family Trust 02-28-06
543 362 10 00	1.00	\$214.30	\$214.30	Renac Kevin R&Angela D
543 362 11 00	1.00	\$214.30	\$214.30	Watson Annie C Living Trust 11-08-13
543 362 12 00	1.00	\$214.30	\$214.30	Deady Jeremy
543 362 13 00	1.00	\$214.30	\$214.30	Estwick Donna
543 362 14 00	1.00	\$214.30	\$214.30	Potter Family Trust 06-03-83
543 362 15 00	1.00	\$214.30	\$214.30	Olds Family 2005 Trust 05-25-05
543 362 16 00	1.00	\$214.30	\$214.30	Ketavong Viliya
543 362 17 00	1.00	\$214.30	\$214.30	Percy James R Jr&Constance
543 362 18 00	1.00	\$214.30	\$214.30	Martin Winston F Sr
543 362 19 00	1.00	\$214.30	\$214.30	Ervin Family Trust 02-18-04
543 362 20 00	1.00	\$214.30	\$214.30	Wallace Shirley T
543 362 21 00	1.00	\$214.30	\$214.30	Tate Family Trust 11-04-06
543 362 22 00	1.00	\$214.30	\$214.30	Murphy Arthur K Revocable Living Trust 03-16-07
543 362 23 00	1.00	\$214.30	\$214.30	Murphy Stanley W
543 362 24 00	1.00	\$214.30	\$214.30	Yu Leslie
543 363 01 00	1.00	\$214.30	\$214.30	Woods Jimmie J Iii&Barbara J
543 363 02 00	1.00	\$214.30	\$214.30	Watson Family Trust 01-27-06
543 363 03 00	1.00	\$214.30	\$214.30	Mueller Jay
543 363 04 00	1.00	\$214.30	\$214.30	Gastelum Daniel&Alma B
543 363 05 00	1.00	\$214.30	\$214.30	Hill Gregory O 2012 Trust 08-29-12

EXHIBIT C - Assessment Roll (Fiscal Year 2018)
Coronado View Maintenance Assessment District

Parcel Number	Total EBU⁽¹⁾	Unit Cost (\$/EBU)	FY 2018⁽²⁾ Assessment	Owner Name
543 363 06 00	1.00	\$214.30	\$214.30	Crawford Sampson H&Konnie R
543 363 07 00	1.00	\$214.30	\$214.30	Gooden Travis S&Cynthia
543 363 08 00	1.00	\$214.30	\$214.30	Osborne Charles C&Narva J Revocable Living Trust 02-19-04
543 363 09 00	1.00	\$214.30	\$214.30	Snowden Family Living Trust 10-03-94
543 363 10 00	1.00	\$214.30	\$214.30	Telles Jayne
543 363 11 00	1.00	\$214.30	\$214.30	Jacobs Aeriaka M Family Trust 02-21-03
543 364 01 00	1.00	\$214.30	\$214.30	C E Q Trust L L C
543 364 02 00	1.00	\$214.30	\$214.30	lizumi Family Trust 10-23-00
543 364 03 00	1.00	\$214.30	\$214.30	Puga Jorge&Sylvia
543 364 04 00	1.00	\$214.30	\$214.30	Cooks Connie Trust 10-02-13
543 364 05 00	1.00	\$214.30	\$214.30	Breaux Leon J&Ana B
543 364 06 00	1.00	\$214.30	\$214.30	Ochoa Alejandro B&Santos-Ochoa Maria
543 364 07 00	1.00	\$214.30	\$214.30	Washington Sylvester Jr 2015 Trust 12-18-15
543 364 08 00	1.00	\$214.30	\$214.30	Kendricks Clayton Jr&Mary L
543 364 09 00	1.00	\$214.30	\$214.30	Porter Family Trust 12-08-06
543 364 10 00	1.00	\$214.30	\$214.30	Robinson Janice M Trust 12-13-01
543 364 11 00	1.00	\$214.30	\$214.30	Coleman Willie M&Patricia A
543 364 12 00	1.00	\$214.30	\$214.30	Phanthaly Sarah S
543 364 13 00	1.00	\$214.30	\$214.30	Staten-Luyken Joyce L
543 364 14 00	1.00	\$214.30	\$214.30	Horton Family Trust 03-17-97
543 364 15 00	1.00	\$214.30	\$214.30	Eliapo Jarvis&Abad-Eliapo Chinkie
543 364 16 00	1.00	\$214.30	\$214.30	Huff James H Jr&Glenette M
543 364 17 00	1.00	\$214.30	\$214.30	Langston Juanita D Revocable Trust 10-25-00
543 364 18 00	1.00	\$214.30	\$214.30	Epps Gregory J&Nichelle Y
543 364 19 00	1.00	\$214.30	\$214.30	White-Bell Alicia E
543 364 20 00	1.00	\$214.30	\$214.30	Ballesteros Family Trust 02-22-05
543 364 21 00	1.00	\$214.30	\$214.30	Lyons-Pardue Charles P&Kara J
543 364 22 00	1.00	\$214.30	\$214.30	Richardson Nolan V&Joan Y
543 364 23 00	1.00	\$214.30	\$214.30	Miller Anthony R&Tyra
543 365 01 00	1.00	\$214.30	\$214.30	Vertullo Carmen G&Lois L
543 365 02 00	1.00	\$214.30	\$214.30	Catano Carlos V
543 365 03 00	1.00	\$214.30	\$214.30	Dealba Enrique Jr&Maria
543 365 04 00	1.00	\$214.30	\$214.30	Johnson Alvin Lorenzo&Andrea Lynne
543 365 05 00	1.00	\$214.30	\$214.30	Lizama Barbara A
543 365 06 00	1.00	\$214.30	\$214.30	Jackson Mattie J
543 365 07 00	1.00	\$214.30	\$214.30	Njoku Ethelbert M&Isabella N
543 365 08 00	1.00	\$214.30	\$214.30	Hong Family Trust 04-12-05
543 365 09 00	1.00	\$214.30	\$214.30	Austin Revocable Trust 04-02-07
543 365 10 00	1.00	\$214.30	\$214.30	Hatcher Maurice E&Fannie M
543 365 11 00	1.00	\$214.30	\$214.30	Blevins Loretta S
543 365 12 00	1.00	\$214.30	\$214.30	Ngo Calvin&Trieu Nga Le
543 365 13 00	1.00	\$214.30	\$214.30	Smith E Donell
543 365 14 00	1.00	\$214.30	\$214.30	Cox Family Trust 08-23-99
543 365 15 00	1.00	\$214.30	\$214.30	Le Mimi Hoang
543 365 16 00	1.00	\$214.30	\$214.30	Jones Living 2014 Trust
543 365 17 00	1.00	\$214.30	\$214.30	Rivera Agustin M&Linda P
543 365 18 00	1.00	\$214.30	\$214.30	Sharpe Family Living Trust
543 365 19 00	1.00	\$214.30	\$214.30	Irving Rufus E Iii
543 366 01 00	1.00	\$214.30	\$214.30	Brown Cupcake Living Trust 12-18-03
543 366 02 00	1.00	\$214.30	\$214.30	Carson Sara A
543 366 03 00	1.00	\$214.30	\$214.30	Varey Family Trust 12-07-00
543 366 04 00	1.00	\$214.30	\$214.30	Irby-Gamble Mary A
543 366 05 00	1.00	\$214.30	\$214.30	Brooks Hermon J&Debra M

EXHIBIT C - Assessment Roll (Fiscal Year 2018)
Coronado View Maintenance Assessment District

Parcel Number	Total EBUs ⁽¹⁾	Unit Cost (\$/EBU)	FY 2018 ⁽²⁾ Assessment	Owner Name
543 366 06 00	1.00	\$214.30	\$214.30	Young Henry&Ross-Young Shelia
543 366 07 00	1.00	\$214.30	\$214.30	Denherder Darik R&Tracy L
543 366 08 00	1.00	\$214.30	\$214.30	Forte Family Trust 11-06-96
543 366 09 00	1.00	\$214.30	\$214.30	Offord Columbus Iv&Monica L
543 366 10 00	1.00	\$214.30	\$214.30	Acosta Esteban A&Linares Yolanda
543 366 11 00	1.00	\$214.30	\$214.30	Stahl Sam&Patricia
543 366 12 00	1.00	\$214.30	\$214.30	Ball Family Trust 02-01-07
543 366 13 00	1.00	\$214.30	\$214.30	Ransome Clarence S&Theodora H 1988 Trust 02-04-98
543 366 14 00	1.00	\$214.30	\$214.30	Tucker Cheryl
543 366 15 00	1.00	\$214.30	\$214.30	Sengsourya Oudone&Khampeo
TOTAL	116.00	-	\$24,859	

⁽¹⁾ Refer to Assessment Engineer's Report for description of apportionment methodology and calculation of EBUs.

⁽²⁾ FY 2018 is the City's Fiscal Year 2018, which begins July 1, 2017 and ends June 30, 2018.