

Historical Resources Board

October 27, 2016

4343 RIDGEWAY DRIVE



4343 RIDGEWAY DRIVE



4343 RIDGEWAY DRIVE

STAFF RECOMMENDATION:

Do not designate the property located at 4343 Ridgeway Drive under any adopted HRB Criteria.



GERSON KRUSE AND LOUIS KRUSE HOUSE

2740 Granada Avenue



GERSON KRUSE AND LOUIS KRUSE HOUSE

2740 Granada Avenue



GERSON KRUSE AND LOUIS KRUSE HOUSE

2740 Granada Avenue

STAFF RECOMMENDATION:

Designate the Gerson Kruse and Louis Kruse House as a historical resource with a period of significance of 1912 under HRB Criterion C.

The designation excludes the detached garage constructed in 1988.



WILLIAM AND ONA FEIGLEY SPEC HOUSE #1
4921 Voltaire Street



WILLIAM AND ONA FEIGLEY SPEC HOUSE #1

4921 Voltaire Street



**WILLIAM AND ONA FEIGLEY
SPEC HOUSE #1
4921 Voltaire Street**

STAFF RECOMMENDATION:

Designate the William and Ona Feigley Spec House #1 as a historical resource with a period of significance of 1925 under HRB Criterion C.



575 ALBION STREET



575 ALBION STREET



575 ALBION STREET



575 ALBION STREET

STAFF RECOMMENDATION:

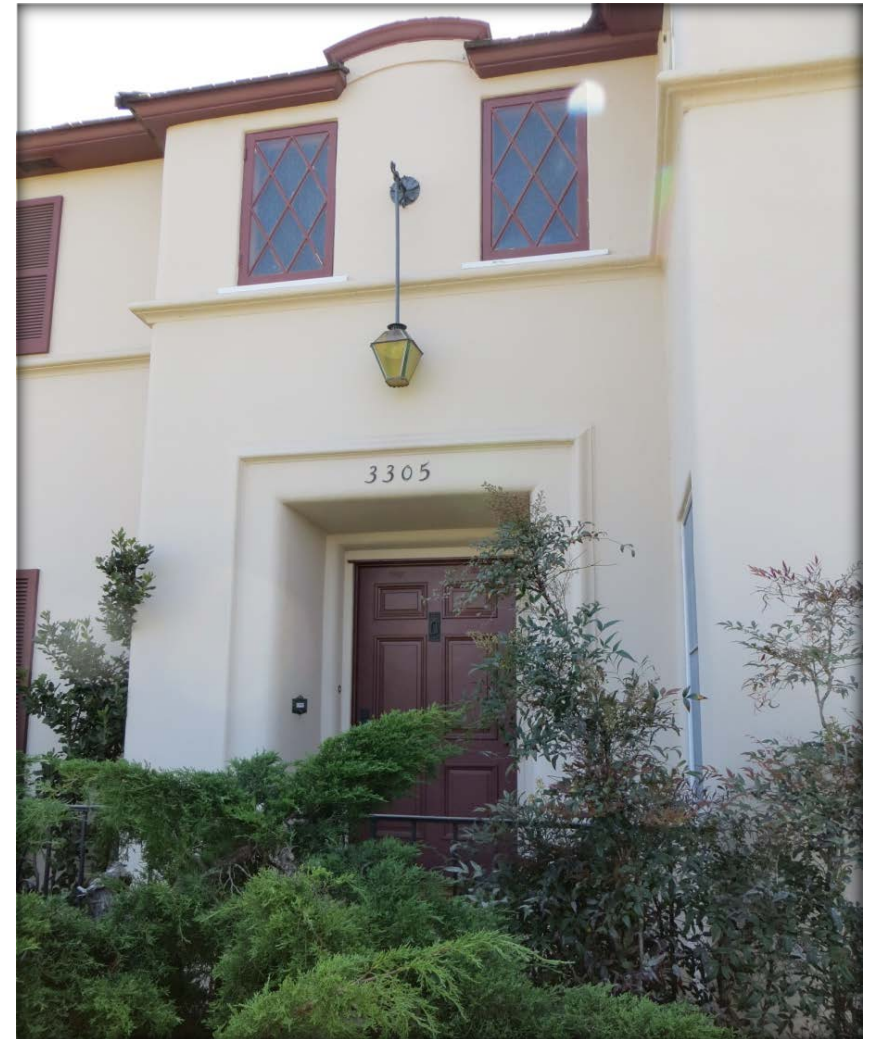
Do not designate the property located at 575 Albion Street under any adopted HRB Criteria.



**DEPEW BUILDING COMPANY/
EDWARD DEPEW SPEC HOUSE #1**
3305 Voltaire Street



**DEPEW BUILDING COMPANY/
EDWARD DEPEW SPEC HOUSE #1**
3305 Voltaire Street



**DEPEW BUILDING COMPANY/
EDWARD DEPEW SPEC HOUSE #1**
3305 Voltaire Street



**DEPEW BUILDING COMPANY/
EDWARD DEPEW SPEC HOUSE #1**
3305 Voltaire Street

STAFF RECOMMENDATION:

Designate the Depew Building Company/ Edward Depew Spec House #1 as a historical resource with a period of significance of 1939 under HRB Criteria C and D.

The designation excludes the 1969 rear addition.



**ALBERTA SECURITY COMPANY/
MARTIN V. MELHORN SPEC HOUSE #6**
1003 Alberta Place



**ALBERTA SECURITY COMPANY/
MARTIN V. MELHORN SPEC HOUSE #6**
1003 Alberta Place



**ALBERTA SECURITY COMPANY/
MARTIN V. MELHORN SPEC HOUSE #6**
1003 Alberta Place

STAFF RECOMMENDATION:

Designate the Alberta Security Company/Martin V. Melhorn Spec House #6, located at 1003 Alberta Place under HRB Criteria C and D, with a period of significance of 1923.

The designation excludes the 200 square foot detached guest quarters constructed in 1942.



SAN DIEGO CABLE RAILWAY COMPANY
SPEC HOUSE #1
1625 Adams Avenue



SAN DIEGO CABLE RAILWAY COMPANY
SPEC HOUSE #1
1625 Adams Avenue



**SAN DIEGO CABLE RAILWAY
COMPANY SPEC HOUSE #1**
1625 Adams Avenue

STAFF RECOMMENDATION:

Designate the San Diego Cable Railway Company Spec House #1 located at 1625 Adams Avenue as a historical resource with a period of significance of c.1886-1913 under HRB Criterion C.



Historical Resources Board

October 27, 2016