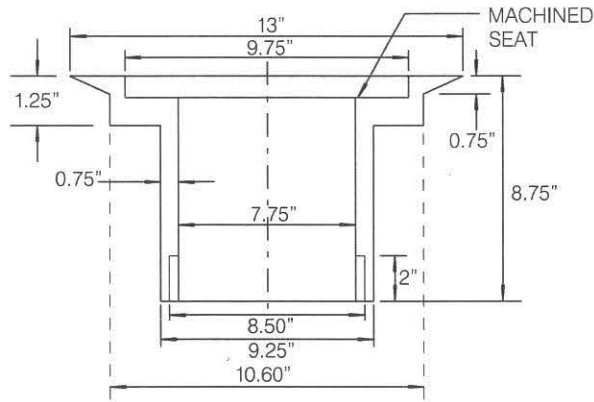


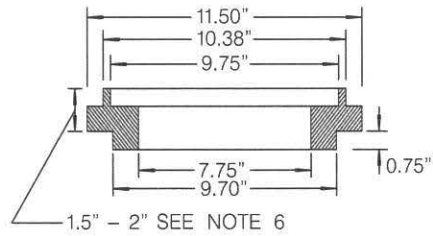
SEE ADDITIONAL NOTES ON SHEET 2
SHEET 1 OF 2

ITEM NO	SIZE AND DESCRIPTION	ITEM NO	SIZE AND DESCRIPTION
①	GATE WELL WITH CAP PER SDW-152	⑥	WATER MAIN
②	VALVE STEM EXTENSION SEE NOTES 1 & 2	⑦	VALVE WELL FRAME SET TO SLOPE OF STREET
③	8" OD x 18" STEEL CASING x REQUIRED LENGTH	⑧	CALDER COUPLING (FOR PVC WELL)
④	BUTTERFLY VALVE	⑨	9" X 9" CONCRETE RING
⑤	RESILIENT WEDGE GATE VALVE		

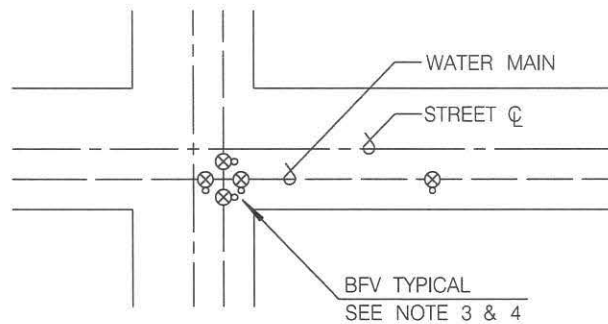
REVISION	BY	APPROVED	DATE	CITY OF SAN DIEGO - STANDARD DRAWING	RECOMMENDED BY THE CITY OF SAN DIEGO STANDARDS COMMITTEE
ORIGINAL*	KA	J. NAGELVOORT	01/12		<i>CA Angew 10/4/16</i>
UPDATED	KA	J. NAGELVOORT	12/12	GATE WELL CAP & CAN INSTALLATION FOR VALVES 4" AND LARGER	COORDINATOR R.C.E. 56523 DATE
UPDATED	KA	J. NAGELVOORT	5/13		
UPDATED	HM	J. NAGELVOORT	02/16		DRAWING NUMBER
UPDATED	IH	J. NAGELVOORT	10/16		SDW-153



CAST IRON VALVE WELL FRAME



CAST IRON RISER RING



BFV OPERATOR POSITION

NOTES:

- 1) VALVES DEEPER THAN 6' REQUIRE A VALVE STEM EXTENSION
- 2) EXTENSION STEMS SHALL NOT BE ATTACHED/BOLTED TO OPERATING NUT
- 3) GATE WELL AND CAP SHALL BE SET SO THAT NO MORE THAN TWO 1" ADJUSTMENT RINGS ARE USED
- 4) BFV OPERATORS TO BE LOCATED TO THE CURBLINE SIDE OF WATER MAIN
- 5) BFV'S INSTALLED AT CROSSES OR TEES REQUIRE A FLANGED DUCTILE IRON SPOOL TO BE INSTALLED BETWEEN THE FITTING AND VALVE IN ACCORDANCE WITH THE SPECIFICATIONS
- 6) CAST IRON RISER RING HEIGHT TO MATCH OVERLAY THICKNESS NO MORE THAN TWO (2) RINGS ARE USED.
- 7) CONCRETE RING MUST HAVE A DESIGN MIX OF 560-C-3250, AND OBTAIN 3250 PSI BEFORE TRAFFIC USE. SEE SDG-108 NOTE 5 FOR CONCRETE OPTIONS AND CURING REQUIREMENTS.

SHEET 2 OF 2

REVISION	BY	APPROVED	DATE	CITY OF SAN DIEGO - STANDARD DRAWING	RECOMMENDED BY THE CITY OF SAN DIEGO STANDARDS COMMITTEE
ORIGINAL*	KA	J. NAGELVOORT	01/12		GATE WELL CAP & CAN INSTALLATION FOR VALVES 4" AND LARGER
UPDATED	KA	J. NAGELVOORT	12/12	COORDINATOR R.C.E. 56523 DATE	
UPDATED	KA	J. NAGELVOORT	5/13	DRAWING NUMBER	
UPDATED	HM	J. NAGELVOORT	02/16	SDW-153	
UPDATED	IH	J. NAGELVOORT	10/16		